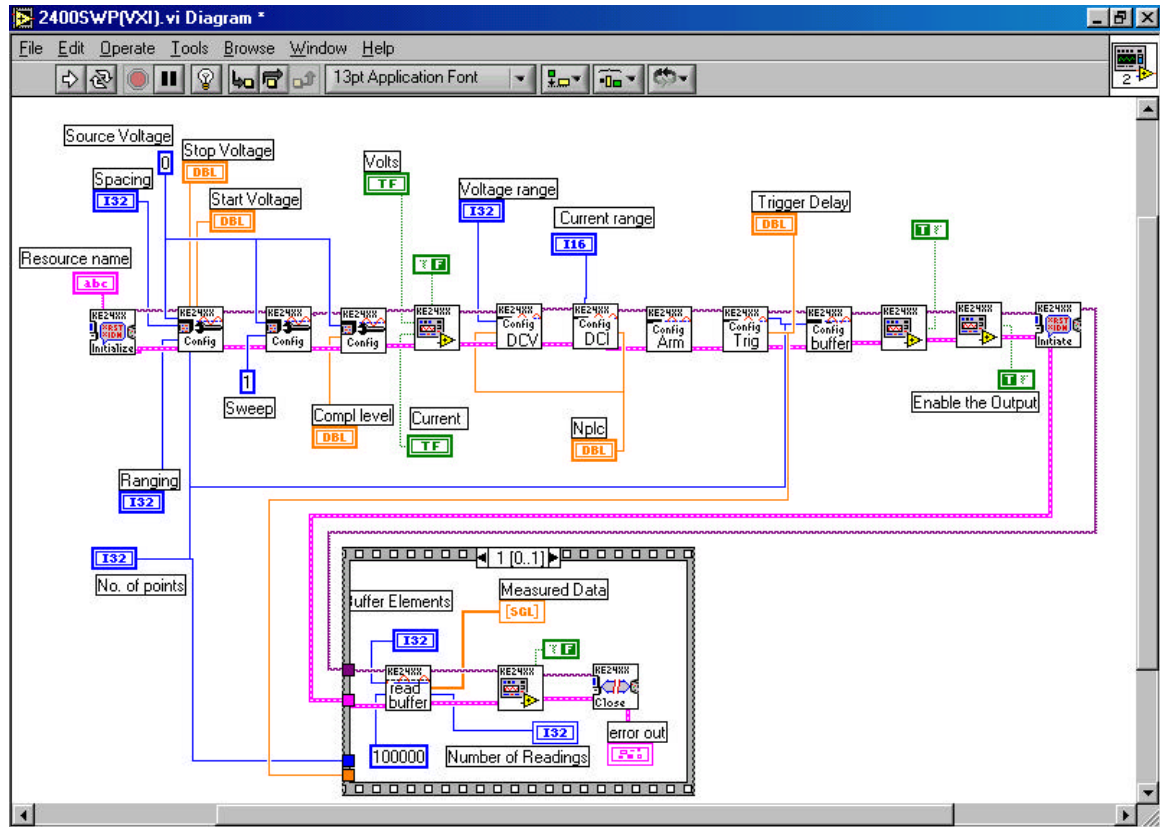


How do I configure the Model 2400 SourceMeter to perform a voltage sweep from LabVIEW?

Below is a screen shot from a fully functional example that is available by download from the Keithley web site.



This is a complete and working example done in LabVIEW 6. It makes use of the VXI/PnP driver for SourceMeter Instruments. The defaults of the example perform a voltage sweep from 0V to 5V in 13 steps. The measured data (in amperes) is then displayed. If the example does not exactly fit your application then it can be used as a model to build upon to achieve the desired performance.

Use the following sub VIs and string them together as shown in the example.

1. Ke24xx Initialize.vi
2. Ke24xx Configure Source Sweep.vi
3. Ke24xx Configure Source Mode.vi
4. Ke24xx Configure Source Compliance.vi
5. Ke24xx Select Sense Functions.vi
6. Ke24xx Configure DCV.vi
7. Ke24xx Configure DCI.vi
8. Ke24xx Configure Arm Layer.vi
9. Ke24xx Configure Trig Layer.vi
10. Ke24xx Configure Buffer.vi

11. Ke24xx Enable/Disable Buffer.vi
12. Ke24xx Enable/Disable Source Output.vi (turn output ON)
13. Ke24xx Initiate.vi
14. Ke24xx Read Buffer.vi
15. Ke24xx Enable/Disable Source Output.vi (turn output OFF)
16. Ke24xx Close.vi

Each Sub VI has parameters to select. Each parameter is a part of the SourceMeter product line features. For example... In the Ke24xx Configure DCV sub VI there are two parameters to select. One is the range and the other is the speed (NPLC). These do not have to be programmed or selected. They have defaults that enable the parameter to operate. The parameters can be selected for various ranges and the speed can be selected if desired. This makes the sub VI flexible for programming.

