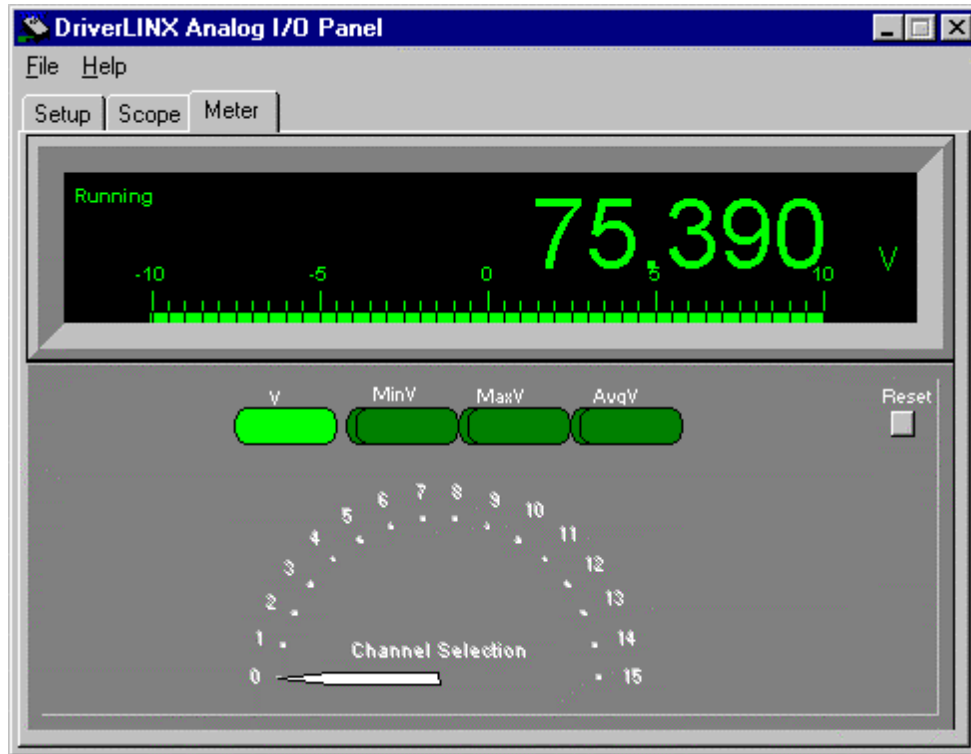


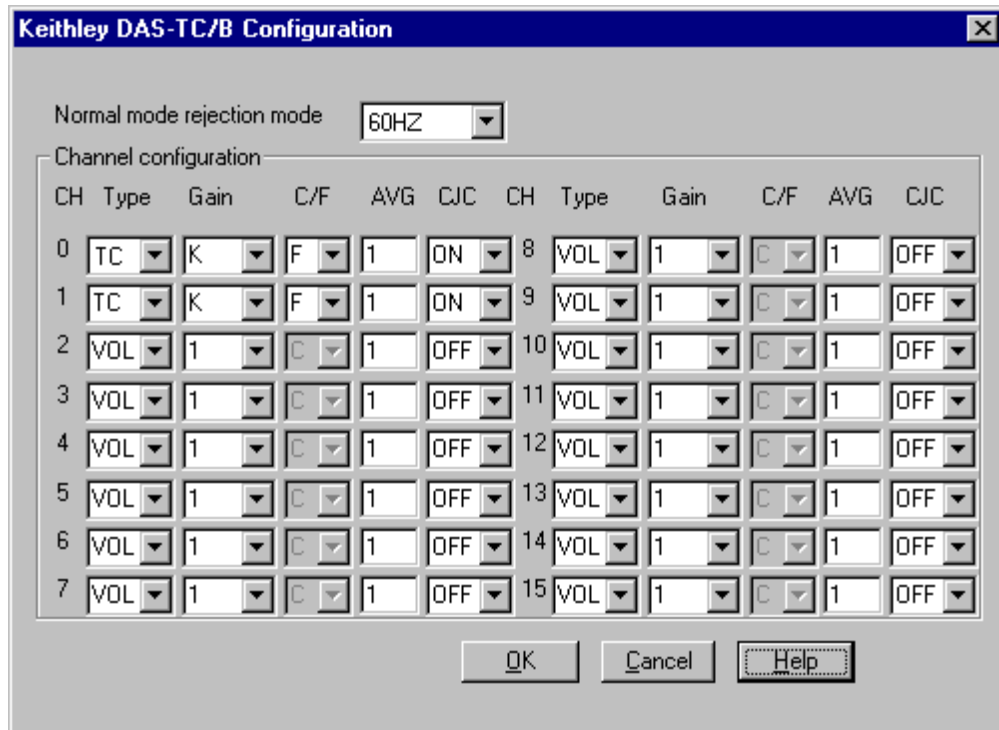
## Can I use AIOPanel with a DAS-TC/B?

The AIO Panel will provide a Scope tab and a Meter tab when using DriverLINX for a DAS-TC or DAS-TC/B. However, only the Meter tab will be able to return data from the board. The Scope tab operates a board in a paced mode (Interrupt), but this general purpose testing application does not correctly anticipate the slow sample speeds of the DAS-TC/B. It will give a 'Counter Value is Invalid' error message.

Below is a screen capture of AIOPanel's Meter tab when used with a DAS-TC/B. In this case, the selected channel has been configured for a thermocouple and to report the measurement in degrees F. The reading is 75.390 °F; it is not 75 volts. If the channel is still configured for volts, then a value very near to zero is most likely to be seen.



Below is a screen capture of the channel configuration within the DriverLINX Configuration utility (click the 'Special' button on the Device tab).



As confirmed by the Meter tab of AIO Panel, channel 0 is configured for temperature measurements and degrees F. When using a full fledged programming language such as Visual Basic, VC++ or Delphi, the DriverLINX driver will permit programmatic channel configuration, so configuration via the above screen is not necessary if performed in the code.

The Normal mode rejection mode should be set to the line frequency of the AC power supplied to the PC that will host the DAS-TC/B board. In the United States, this is 60Hz. In Europe and Asia, this is 50Hz. On some military installations, this is 400Hz.