

# KEITHLEY

## quickDAQ

quickDAQ

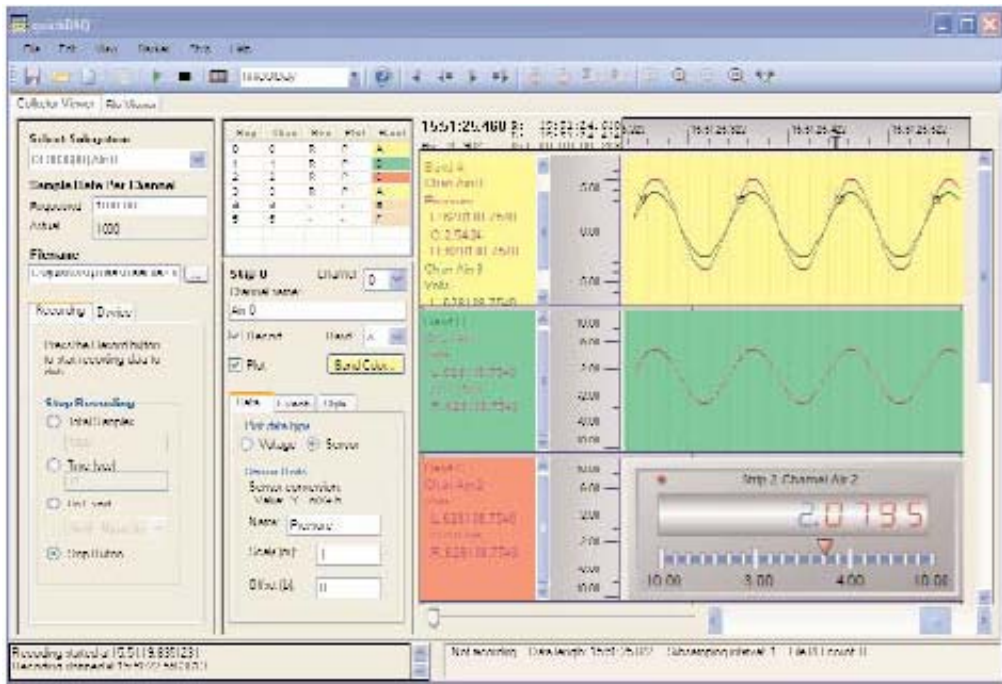
.NET Application Software

### quickDAQ

**High-Performance, Ready-to-Measure Application for Data Acquisition**

*quickDAQ allows you to acquire, plot, analyze, and save analog data*

- **Acquire analog data** from Keithley's KUSB-3100 Series USB data acquisition devices.
- **Display live signals** for real-time visual analysis.
- **Analyze data** or save it to disk for later analysis.
- **No coding necessary**, just load and start measuring, out-of-the-box.
- **Import data** into other applications for advanced post-processing and analysis.
- **Converts signals automatically** to engineering units to support a variety of data acquisition applications from temperature measurement to high speed testing and analysis.



**Figure 1. quickDAQ is a high-performance, .NET based data collection and analysis software application that can be used right out of the box ... without writing code. The Chart Viewer shows the channels that have been selected for display. Several channels can be displayed on a single bar for comparison.**

1.888.KEITHLEY (U.S. only)

[www.keithley.com](http://www.keithley.com)

# KEITHLEY

A GREATER MEASURE OF CONFIDENCE

Free software to get "Up & Running" quickly

DATA ACQUISITION PRODUCTS

## The Software

quickDAQ is a high-performance data collection and analysis software application that allows you to acquire analog data, plot it during acquisition, analyze it, and save it to disk for later analysis. You can be productive right out of the box with this software....without writing code. You can even import the data to other applications like Microsoft Excel® and MATLAB® for more advanced analysis.

### Simple Design

quickDAQ was designed with high performance and user simplicity in mind. With two main modes to choose from, the Collector Viewer and the File Viewer, the user can easily switch between the functions needed.

**Collector Viewer:** This view handles real-time acquired data from a hardware module. View data in various modes such as individual strip charts per channel, overlapping charts, and custom gauges. In this view, you can choose to record data to a file and

specify channels, recording triggers, start and stop criteria and more.

**File Viewer:** This view provides post-processing of your recorded data from previous quickDAQ sessions. No need for the hardware to be installed in this mode. A standard Windows file browser allows you to locate the data file you want to view and loads it. You can then view and analyze the data using the same functions provided in the Collector Viewer.

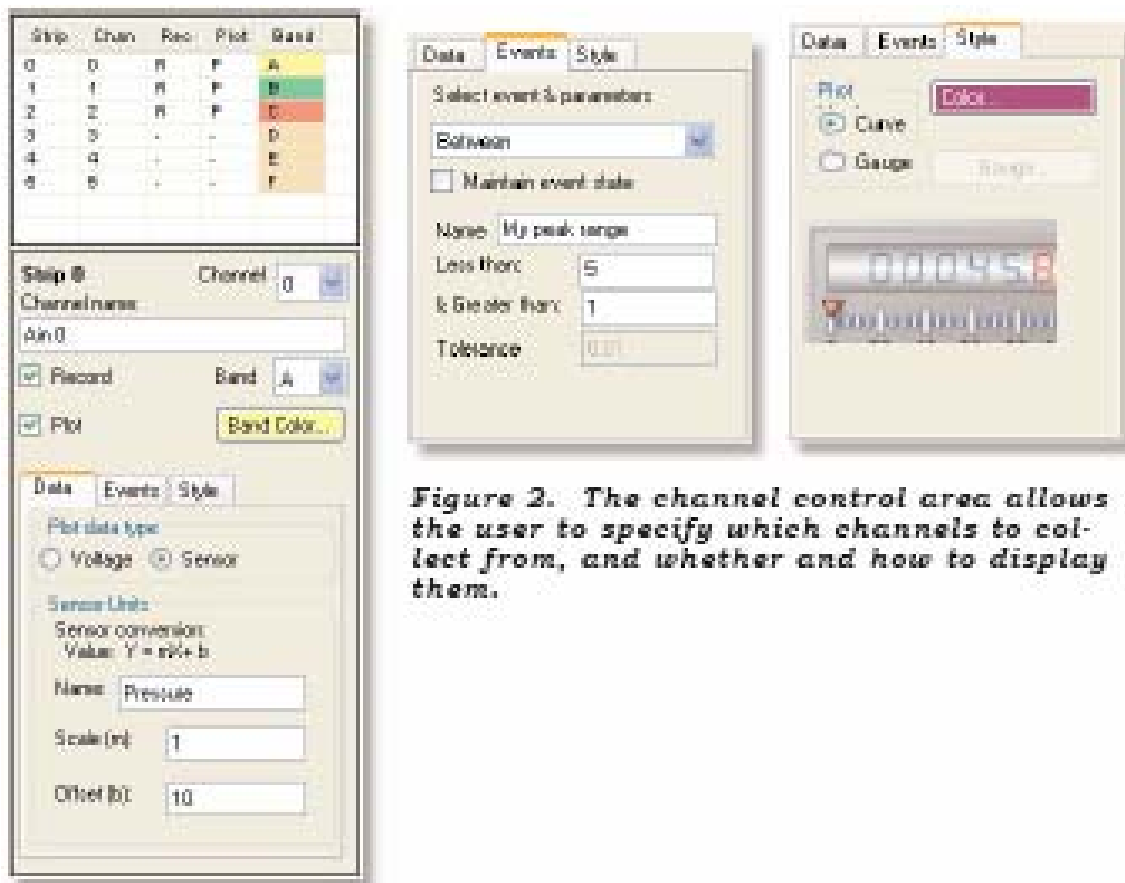
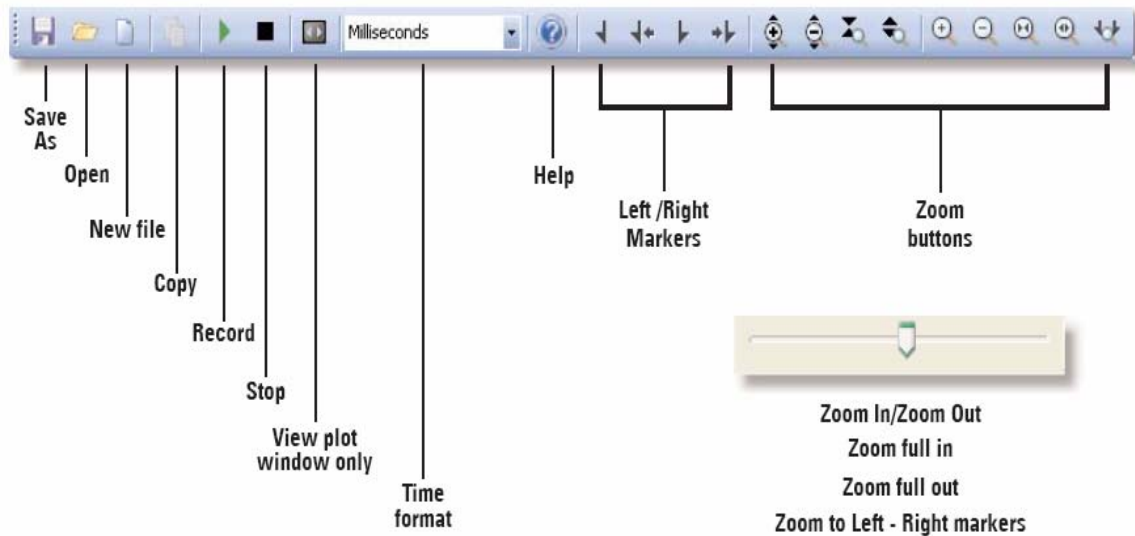


Figure 2. The channel control area allows the user to specify which channels to collect from, and whether and how to display them.

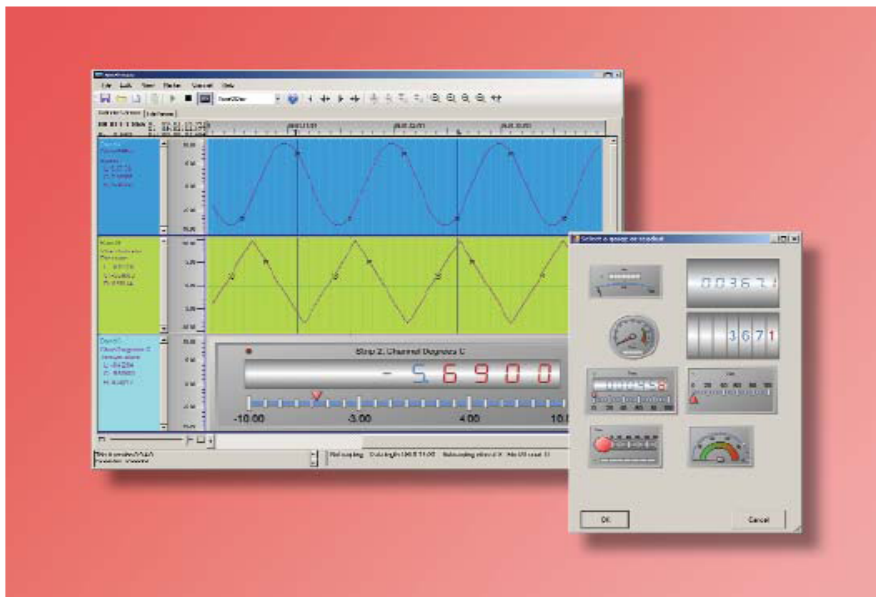
## Standard Windows Toolbar

The toolbar provides standard Windows file controls, as well as controls that operate the streaming and display of your data.



## Availability

Keithley quickDAQ is available as a download on the Keithley web site at [www.keithley.com](http://www.keithley.com).



*Figure 3 Easily select any gauge type to fit your application need. Simply drag and drop your choice into the viewer.*

1.888.KEITHLEY (U.S. only)

[www.keithley.com](http://www.keithley.com)

**KEITHLEY**

A GREATER MEASURE OF CONFIDENCE

Free software to get "Up & Running" quickly

DATA ACQUISITION PRODUCTS