

Miscellaneous Accessories

ADAPTER

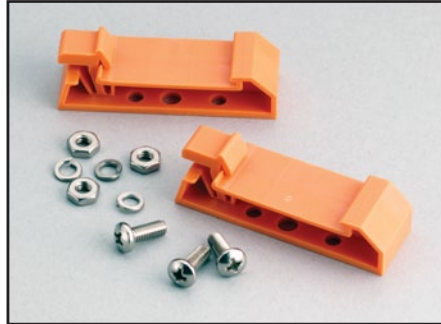
CONN-1800HC: The CONN-1800HC is a subset of the STA-1800HC, providing only the breakout of the DAS-1800HC's 100-pin connector into four 37-pin D-type male connectors. No screw terminals are provided. Up to two MB-01 backplanes can be accommodated. Includes ½" rubber feet.

Dimensions: 4.5" × 5.5" (11.4cm × 14.0cm)

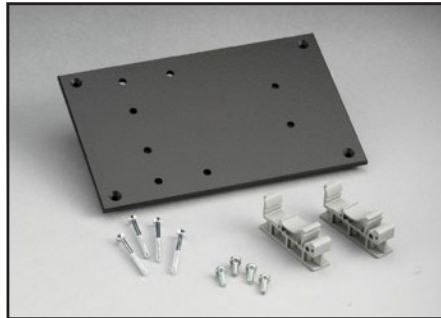
ENCLOSURES

STP-ENCL: General purpose plastic enclosure with lid and plastic standoffs for STP-36, STP-36CJC, STP-37, STP-37/E, STP-50, STP-68, STP-3140, STA-3108A1, STA3108A2, and STA-3108-D1.

DIN RAIL MOUNTING KITS



KUSB-BNC-DIN-KIT: DIN rail mount kit. For use with KUSB-3116.



KUSB-DIN-MOUNT-KIT: DIN rail mount kit. For use with KUSB-3102, -3108, -3160.

1.888.KEITHLEY (U.S. only)

www.keithley.com

KEITHLEY

A GREATER MEASURE OF CONFIDENCE