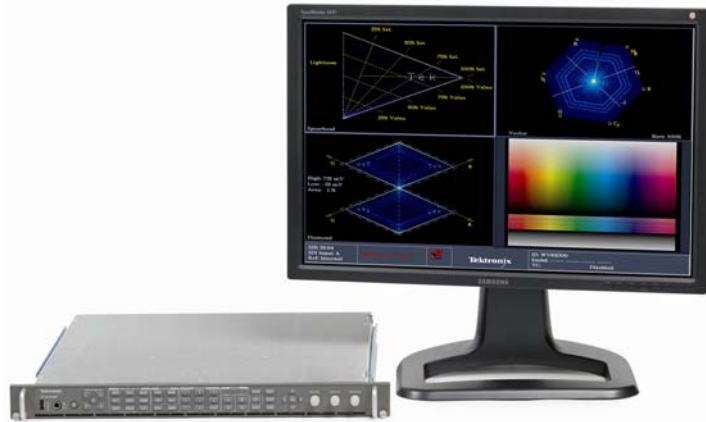


WVR8200/8300 Advanced Waveform Rasterizers Fact Sheet

Multi-Format, Multi-Standard Solutions



Features

Benefits

Option EYE (WVR8200) and Option PHY (WVR8300): The most comprehensive physical layer monitoring and measurements available (including 3Gb/s SDI signals with Option 3G)	Makes it easier and faster to track down SDI signal path problems with automated physical layer measurements
ANC Data Inspector	Automatically detects and displays the presence, absence and status for all ANC data types
A/V Delay Measurement	Helps prevent Lip-Sync problems with fast, accurate and repeatable out-of-service A/V delay measurements
Industry-leading Gamut Displays including Diamond, Arrowhead, LQV & Spearhead Displays for more precise color grading	Simplifies maintaining color compliance across a variety of formats and color spaces
Simultaneous CEA608 & CEA708 closed caption displays (or multiple Languages for CEA608 and CEA708) in multiple picture displays	Quick verification of multiple closed caption feeds in multiple languages or standards
10,000 Event Error Log	Review more material in less time during ingest and QC
Video & Audio Session Screens and Status Displays	Simplifies monitoring tasks with exclusive displays that provide critical content information at a glance

Advanced tools simplify your digital transition



ANC Data Inspector

Intuitive See & Solve™ Capabilities

- FlexVu™ display - Powerful tiling flexibility
- CaptureVu® data capture technology - much more than simply “freezing” a screen
- Black-picture and frozen-picture detection and alarm
- The most extensive error logging capacity (10,000 events)
- Common displays for all supported formats (video, audio, Gamut, timing and sessions) facilitate easy skills transfer

Support for Emerging Technologies

- Field upgradeable support for 3Gb/s SDI (Dual Link, HD and SD SDI standard)
- Dual Link support for all SMPTE 425M formats and 352M payload identification (including selectable display of alpha channel)
- 2K XYZ color space support for digital cinema application
- Simultaneous left eye & right eye signals monitoring for stereoscopic 3D content production and post production
- Dolby® Surround Sound Display with Dolby Guardband Bar Metering

WVR8200/8300 Advanced Waveform Rasterizers Fact Sheet

Key Specifications and Ordering Information

Options Availability		WVR8200	WVR8300
Video			
	HD/Dual Link/SD Video Monitoring	Standard	Standard
3G ¹	3G-SDI (Level A and Level B)	✓	✓
CPS	Composite PAL / NTSC	✓	✓
Audio			
AD or DPE	Embedded & AES Digital Audio/ Analog Audio	✓	✓
DPE	Dolby E / Dolby Digital Plus / Dolby Digital	✓	✓
Physical Layer Measurement			
PHY	Jitter Measurements, EYE Pattern Display, Eye Pattern Auto Measurements, Pathological Signal Generation		✓
EYE	Jitter Measurements, EYE Pattern Display,	✓	
Other Advanced Capabilities			
PROD	Advanced Color Gamut (Spearhead / LQV)	✓	✓
	Simultaneous Input Monitoring (SIM)		✓
	ANC Data Inspector		✓
	Digital Data Analysis		✓
	Out-of-Service AV Delay Measurement		✓



	Service Option Description
CA1	Provides a single calibration event or coverage for the designated calibration interval, whichever comes first
C3	Calibration Service 3 Years
C5	Calibration Service 5 Years
R3	Repair Service 3 Years
D1 ¹	Calibration Data Report
D3 ¹	Calibration Data Report 3 years (with Option C3)
D5 ¹	Calibration Data Report 5 years (with Option C5)
R3	Repair Service 3 years (including warranty)
R5	Repair Service 5 years (including warranty)

Models	Key Applications
WVR8200	3G/HD/SD Waveform Rasterizer, 2 SDI Inputs (3G-SDI, HD-SDI and SD-SDI support on the same inputs-auto detect) Base unit includes HD-SDI, SD-SDI, and Dual-Link signal formats support Option 3G required for 3G-SDI support
WVRM8300	Advanced 3G/HD/SD Waveform Rasterizer and Analyzer, 2 SDI Inputs (3G-SDI, HD-SDI and SD-SDI support on the same inputs-auto detect) Base unit includes HD-SDI, SD-SDI, Dual-Link signal formats, simultaneous input monitoring (SIM), advanced data analysis, and audio/video delay measurement (requires an audio option) Option 3G required for 3G-SDI support.
WVR8RFP	Remote Front Panel for WVR8xxx Series Waveform Rasterizer (includes 25 foot cable)

¹ Not available for WVR8RFP.