

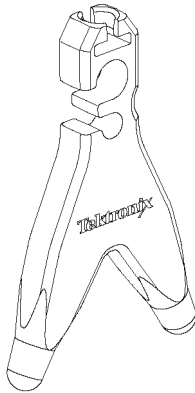
**TPH1000
Probe Holder**

Instructions



TPH1000 Probe Holder

The TPH1000 probe holder is a probe accessory that allows you to probe circuits and test points hands-free, without using hook clips or tape to keep the probe in contact with your circuit.



2894-001

The weight of the probe holder keeps the probe in contact with your circuit, and the non-skid base keeps the probe holder in place. The probe holder is insulated to prevent short-circuits, and the two probe grip areas accept a wide variety of probes.

Features

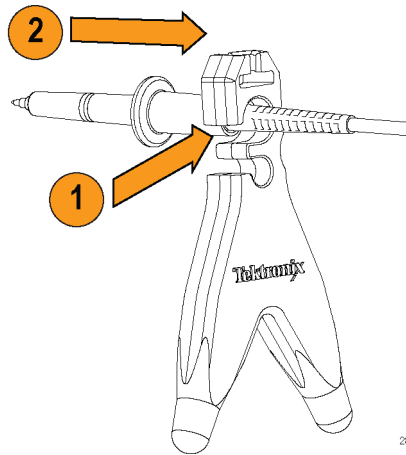
- Works with many Tektronix active and passive probes
- Use with single-ended, differential, and high-voltage probes
- Integral locking socket holds other probe accessories in place

Probe Grips

Two probe grips are molded into the probe, 14 mm (0.55 in) and 9 mm (0.35 in) in diameter. Use the smaller grip with Tektronix passive probes, for example, the P6139B and P5050B. Use the larger grip with Tektronix high voltage probes like the P5100A and P5122.

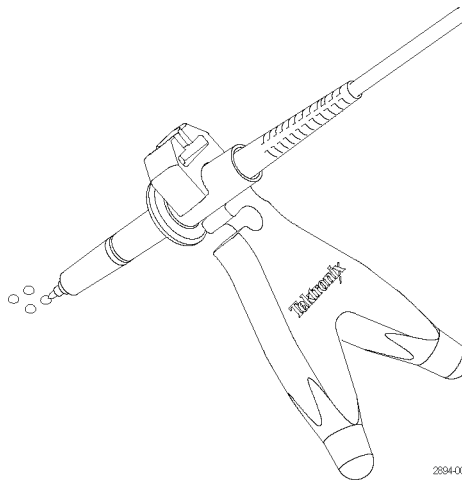
To use the holder, insert the cable in the grip opening and then slide the probe into the grip.

CAUTION. Do not pull the probe by the cable; you may damage the probe. Always insert and remove probes by gripping the handheld section of the probe.



2894-004

Position the base of the probe holder on your circuit where it can maintain stability while contacting the test point.

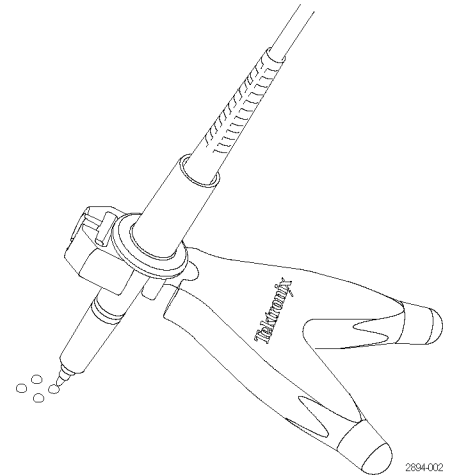


2894-002

CAUTION. If you are probing circuitry with dense contacts such as IC pins, Tektronix recommends that you use insulated probe tip accessories designed to prevent short-circuiting adjacent IC pins or circuitry.

CAUTION. If your probe has exposed ground contacts near the probe tip, be careful to avoid short-circuiting the probe to adjacent circuitry.

You can also position the probe on the other side of the holder as shown below.



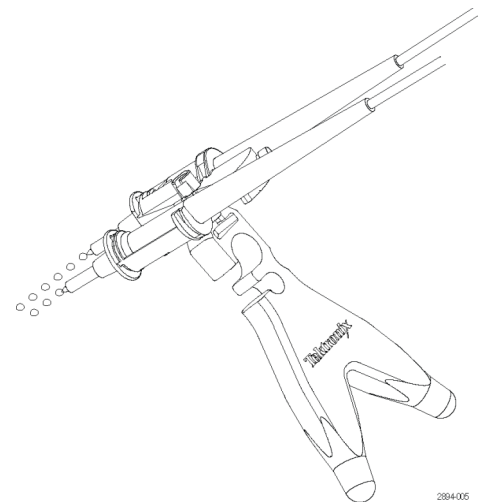
2894-002

Accessory Retainer

The top of the probe holder has a slot that engages with optional accessories, such as the High Voltage Differential Probe Browser.

The High Voltage Differential Probe Browser is a Tektronix probe accessory that holds and positions the two input probes on Tektronix P5200A series high voltage differential probes. The browser allows you to easily probe two points with one hand. The distance between the two probe tips is adjustable up to 38 mm (1.5 in).

Use the probe browser with the TPH1000 probe holder to take hands-free differential measurements on your circuit with Tektronix P5200A series probes.



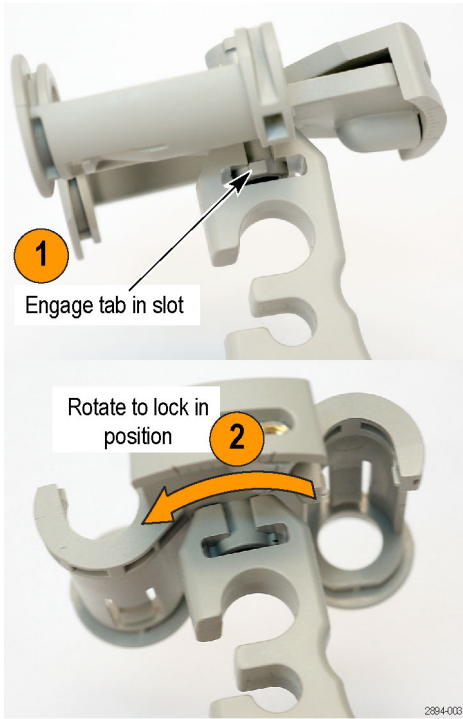
2894-005

To connect the probe browser to the probe holder, refer to the instructions on the next page.

Recommended Accessories

Description	Part number
High Voltage Differential Probe Browser – Order this accessory to hold and position the two input probes on Tektronix P5200A Series high voltage differential probes.	013-0382-xx

Connect the Browser. To connect the browser to the probe holder, line up the tab on the browser with the slot in the holder, press the two together, and then turn the browser one-quarter turn to lock it in place.



TPH1000 Probe Holder Dimensions

Characteristic	Description
Length	63.5 mm (2.5 in)
Width	11 mm (0.44 in)
Height	99 mm (3.9 in)
Probe Grips (2)	14 mm (0.55 in) and 9 mm (0.35 in)
Weight	55 gm (1.9 oz)

Safety Information

Connect and Disconnect Properly. Connect the probe output to the measurement instrument before connecting the probe to the circuit under test. Disconnect the probe input and the probe reference lead from the circuit under test before disconnecting the probe from the measurement instrument.

Avoid Electric Shock. To avoid injury or loss of life, do not connect or disconnect probes or test leads while they are connected to a voltage source.

Warranty Information

For warranty information, go to www.tektronix.com/warranty.

Contacting Tektronix

Web site: www.tektronix.com

Phone: 1-800-833-9200

Address: Tektronix, Inc.
Department or name (if known)
14200 SW Karl Braun Drive
P.O. Box 500
Beaverton, OR 97077 USA

Email: techsupport@tektronix.com