

VQS1000
Video Quality Software
Quick Start User Manual



VQS1000
Video Quality Software
Quick Start User Manual

This document supports software version 1.5.

www.tektronix.com

077-0489-01

Tektronix

Copyright © Tektronix. All rights reserved. Licensed software products are owned by Tektronix or its subsidiaries or suppliers, and are protected by national copyright laws and international treaty provisions.

Tektronix products are covered by U.S. and foreign patents, issued and pending. Information in this publication supersedes that in all previously published material. Specifications and price change privileges reserved.

TEKTRONIX and TEK are registered trademarks of Tektronix, Inc.

Manufactured under license from Dolby® Laboratories. Dolby is a trademark of Dolby Laboratories. Confidential unpublished works. Copyright 1993-2002 Dolby Laboratories. All rights reserved.

Contacting Tektronix

Tektronix, Inc.
14150 SW Karl Braun Drive
P.O. Box 500
Beaverton, OR 97077
USA

For product information, sales, service, and technical support:

- In North America, call 1-800-833-9200.
- Worldwide, visit www.tektronix.com to find contacts in your area.

Warranty

Tektronix warrants that the media on which this software product is furnished and the encoding of the programs on the media will be free from defects in materials and workmanship for a period of three (3) months from the date of shipment. If any such medium or encoding proves defective during the warranty period, Tektronix will provide a replacement in exchange for the defective medium. Except as to the media on which this software product is furnished, this software product is provided "as is" without warranty of any kind, either express or implied. Tektronix does not warrant that the functions contained in this software product will meet Customer's requirements or that the operation of the programs will be uninterrupted or error-free.

In order to obtain service under this warranty, Customer must notify Tektronix of the defect before the expiration of the warranty period. If Tektronix is unable to provide a replacement that is free from defects in materials and workmanship within a reasonable time thereafter, Customer may terminate the license for this software product and return this software product and any associated materials for credit or refund.

THIS WARRANTY IS GIVEN BY TEKTRONIX WITH RESPECT TO THE PRODUCT IN LIEU OF ANY OTHER WARRANTIES, EXPRESS OR IMPLIED. TEKTRONIX AND ITS VENDORS DISCLAIM ANY IMPLIED WARRANTIES OF MERCHANTABILITY OR FITNESS FOR A PARTICULAR PURPOSE. TEKTRONIX' RESPONSIBILITY TO REPLACE DEFECTIVE MEDIA OR REFUND CUSTOMER'S PAYMENT IS THE SOLE AND EXCLUSIVE REMEDY PROVIDED TO THE CUSTOMER FOR BREACH OF THIS WARRANTY. TEKTRONIX AND ITS VENDORS WILL NOT BE LIABLE FOR ANY INDIRECT, SPECIAL, INCIDENTAL, OR CONSEQUENTIAL DAMAGES IRRESPECTIVE OF WHETHER TEKTRONIX OR THE VENDOR HAS ADVANCE NOTICE OF THE POSSIBILITY OF SUCH DAMAGES.

[W9b – 15AUG04]

IMPORTANT
READ BEFORE OPERATING EQUIPMENT

This software is provided under license from Tektronix, Inc. Retention of this program for more than thirty (30) days or use of the program in any manner constitutes acceptance of the license terms.

CAREFULLY READ THE ENCLOSED SOFTWARE LICENSE AGREEMENT. If you cannot agree to the license terms, promptly contact the nearest Tektronix Field Office for return assistance.

TEKTRONIX SOFTWARE LICENSE AGREEMENT

THE PROGRAM, OR PROGRAMS, ENCODED OR INCORPORATED WITHIN EQUIPMENT, IS FURNISHED SUBJECT TO THE TERMS AND CONDITIONS OF THIS AGREEMENT. RETENTION OF THE PROGRAM FOR MORE THAN THIRTY DAYS OR USE OF THE PROGRAM IN ANY MANNER WILL BE CONSIDERED ACCEPTANCE OF THE AGREEMENT TERMS. IF THESE TERMS ARE NOT ACCEPTABLE, THE UNUSED PROGRAM AND ANY ACCOMPANYING DOCUMENTATION SHOULD BE RETURNED PROMPTLY TO TEKTRONIX FOR A FULL REFUND OF THE LICENSE FEE PAID. (FOR INFORMATION REGARDING THE RETURN OF PROGRAMS ENCODED OR INCORPORATED WITHIN EQUIPMENT, CONTACT THE NEAREST TEKTRONIX SALES OFFICE.)

DEFINITIONS. "Tektronix" means Tektronix, Inc., an Oregon corporation, or local Tektronix' legal entity that is supplying the equipment.

"Program" means the Tektronix software product (executable program and/or data) enclosed with this Agreement or included within the equipment with which this Agreement is packed.

"Customer" means the person or organization in whose name the Program was ordered.

LICENSE. Customer may:

1. Use the Program on a single machine at any one time;
2. If the Program is provided in connection with a floating-user license, the Program may be used on multiple machines provided that the user is authorized, and the total number of users at any one time does not exceed the total number of licensed concurrent users;
3. Modify the Program or merge it with another for use on the single machine; and
4. Copy the Program for archival or backup purposes, provided that no more than one (1) such copy is permitted to exist at any one time. If the Program is provided in connection with a floating-user license, the Program may be copied onto multiple machines for use by authorized users.

Each copy of the Program made by Customer must include a reproduction of any copyright notice or restrictive rights legend appearing in or on the copy of the Program as received from Tektronix.

Customer may not:

1. Use the Program on more than one machine at any one time, unless covered by a floating-user license or separate site license;
2. Transfer the Program to any person or organization outside of Customer or the corporation of which Customer is a part without the prior written consent of Tektronix, except in connection with the transfer of the equipment within which the programs are encoded or incorporated;
3. Export or reexport, directly or indirectly, the program, any associated documentation, or the direct product thereof, to any country to which such export or reexport is restricted by law or regulation of the United States or any foreign government having jurisdiction without the prior authorization, if required, of the Office of Export Administration, Department of Commerce, Washington, D.C. and the corresponding agency of such foreign government;

4. For object-code Programs only, reverse compile or disassemble the Program for any purpose; or
5. Copy the documentation accompanying the Program.

For Programs designed to reside on a single-machine and support one or more additional machines, either locally or remotely, without permitting the Program to be transferred to an additional machine for local execution, the additional machines shall be considered within the definition of "single machine". For programs permitting the Program to be transferred to an additional machine for local execution, a separate license shall be required for each such machine with which the Program may be used, or each concurrent user authorized under a floating-user license.

Title to the Program and all copies thereof, but not the media on which the Program or copies may reside, shall be and remain with Tektronix or others for whom Tektronix has obtained a respective licensing right.

Customer shall pay when due all property taxes that may now or hereafter be imposed, levied or assessed with respect to the possession or use of the Program or this license and shall file all reports required in connection with such taxes.

Any portion of the Program modified by Customer or merged with another program shall remain subject to these terms and conditions.

If the Program is acquired by or for an agency of the U.S. Government, the Program shall be considered computer software developed at private expense and the license granted herein shall be interpreted as granting Customer restricted rights in the Program and related documentation as defined in the applicable acquisition regulation.

THE PROGRAM MAY NOT BE USED, COPIED, MODIFIED, MERGED, OR TRANSFERRED TO ANOTHER EXCEPT AS EXPRESSLY PERMITTED BY THESE TERMS AND CONDITIONS.

UPON TRANSFER OF ANY COPY, MODIFICATION, OR MERGED PORTION OF THE PROGRAM, THE LICENSE GRANTED HEREIN IS AUTOMATICALLY TERMINATED.

TERM. The license granted herein is effective upon acceptance by Customer, and shall remain in effect until terminated as provided herein. The license may be terminated by Customer at any time upon written notice to Tektronix. The license may be terminated by Tektronix or any third party from whom Tektronix may have obtained a respective licensing right if Customer fails to comply with any term or condition and such failure is not remedied within thirty (30) days after notice hereof from Tektronix or such third party. Upon termination by either party, Customer shall return to Tektronix or destroy, the Program and all associated documentation, together with all copies in any form.

LIMITED WARRANTY. Tektronix warrants that the media on which the Program is furnished and the encoding of the Program on the media will be free from defects in materials and workmanship for a period of three (3) months from the date of shipment. If any such medium or encoding proves defective during the warranty period, Tektronix will provide a replacement in exchange for the defective medium. Except as to the media on which the Program is furnished, the Program is provided "as is" without warranty of any kind, either express or implied. Tektronix does not warrant that the functions contained in the Program will meet Customer's requirements or that the operation of the Program will be uninterrupted or error-free.

In order to obtain service under this warranty, Customer must notify Tektronix of the defect before the expiration of the warranty period. If Tektronix is unable to provide a replacement that is free from defects in materials and workmanship within a reasonable time thereafter, Customer may terminate the license for the Program and return the Program and any associated materials for credit or refund.

THIS WARRANTY IS GIVEN BY TEKTRONIX WITH RESPECT TO THE PROGRAM IN LIEU OF ANY OTHER WARRANTIES, EXPRESS OR IMPLIED. TEKTRONIX AND ITS VENDORS DISCLAIM ANY IMPLIED WARRANTIES OF MERCHANTABILITY OR FITNESS FOR A PARTICULAR PURPOSE. TEKTRONIX' RESPONSIBILITY TO REPLACE DEFECTIVE MEDIA, OR REFUND CUSTOMER'S PAYMENT IS THE SOLE AND EXCLUSIVE REMEDY PROVIDED TO THE CUSTOMER FOR BREACH OF THIS WARRANTY.

LIMITATION OF LIABILITY, IN NO EVENT SHALL TEKTRONIX OR OTHERS FROM WHOM TEKTRONIX HAS OBTAINED A LICENSING RIGHT BE LIABLE FOR ANY INDIRECT, SPECIAL, INCIDENTAL, OR CONSEQUENTIAL DAMAGES ARISING OUT OF OR CONNECTED WITH CUSTOMER'S POSSESSION OR USE OF THE PROGRAM, EVEN IF TEKTRONIX OR SUCH OTHERS HAS ADVANCE NOTICE OF THE POSSIBILITY OF SUCH DAMAGES.

THIRD-PARTY DISCLAIMER. Except as expressly agreed otherwise, third parties from whom Tektronix may have obtained a licensing right do not warrant the program, do not assume any liability with respect to its use, and do not undertake to furnish any support or information relating thereto.

GENERAL. This Agreement contains the entire agreement between the parties with respect to the use, reproduction, and transfer of the Program.

Neither this Agreement nor the license granted herein is assignable or transferable by Customer without the prior written consent of Tektronix.

This Agreement and the license granted herein shall be governed by the laws of the state of Oregon.

All questions regarding this Agreement or the license granted herein should be directed to the nearest Tektronix Sales Office.

Table of Contents

| | |
|-------------------------------------------------------------------|-----|
| Compliance Information | ii |
| Environmental Considerations..... | ii |
| Preface | iii |
| Key Features and Benefits..... | iii |
| Applications | iii |
| Product Documentation | iv |
| Related Products | iv |
| Installation..... | 1 |
| Before Installation | 1 |
| Installing the VQS1000 Software..... | 2 |
| Starting and Closing the VQS1000 Application..... | 5 |
| Using the Software | 6 |
| Getting Acquainted with the Software | 6 |
| Configuring a DTV Monitor for Use with the VQS1000 Software | 9 |
| Application Examples..... | 10 |
| Analyzing Video Files | 10 |
| Analyzing Backhauled Video from a DTV Monitor | 19 |
| Analyzing Real-time Video Over IP..... | 22 |
| Product Options and Upgrades | 25 |
| Options | 25 |
| Field Upgrade Kits | 25 |
| Upgrading the VQS1000 Software | 25 |
| Index | |

Compliance Information

This section lists the environmental standards with which the product complies.

Environmental Considerations

This section provides information about the environmental impact of the product.

Product End-of-Life Handling

Observe the following guidelines when recycling an instrument or component:

Equipment recycling. Production of this equipment required the extraction and use of natural resources. The equipment may contain substances that could be harmful to the environment or human health if improperly handled at the product's end of life. To avoid release of such substances into the environment and to reduce the use of natural resources, we encourage you to recycle this product in an appropriate system that will ensure that most of the materials are reused or recycled appropriately.



This symbol indicates that this product complies with the applicable European Union requirements according to Directives 2002/96/EC and 2006/66/EC on waste electrical and electronic equipment (WEEE) and batteries. For information about recycling options, check the Support/Service section of the Tektronix Web site (www.tektronix.com).

Restriction of Hazardous Substances

This product is classified as Monitoring and Control equipment, and is outside the scope of the 2002/95/EC RoHS Directive.

Preface

This manual describes the installation and use of the Tektronix VQS1000 Video Quality Software.

Key Features and Benefits

- Video quality analysis software for single-ended QoE (Quality of Experience) analysis of video and audio content
- Analysis of decoded MPEG-2, AC-3, MPEG-2 AAC and MPEG-4 AAC audio in accordance with ITU-R BS.1770/1771, allowing operators in all regions to analyze loudness related problems to the internationally recognized ITU audio standard
- Available for installation on your own personal computer (PC)
- Connect either directly to an Ethernet switch or integrate with Tektronix IP Video and DTV Monitoring probes
- IGMP support for analyzing multicast streams beyond the local router
- Trending of video and audio metrics to help diagnose intermittent and time related problems
- Triggered capture with pretrigger buffer enables archive of impairments or offline video quality analysis to be performed
- QoE results are reflected in monitoring probe's remote user interface (RUI) and event log
- Results available to management systems through DTV monitoring probes Simple Network Management Protocol (SNMP) Management Information Base (MIB)
- Automated round-robin polling sequentially checks services within a Multiprogram Transport Stream (MPTS)

NOTE. *Polling is not applicable for offline file analysis.*

- Can be used standalone for offline file analysis, with support for MPTS and Single Program Transport Stream (SPTS) files, or for analyzing IP traffic from a switch or router
- Reliable and sophisticated analysis algorithms applied to decoded MPEG 2 or H.264 video to identify frozen, black, macro-blocking and blocky compression artifacts. This enables operators to distinguish between impairments resulting from network distribution versus artifacts resulting from over-compression.
- Industry-first unique visualization tool with innovative impairment displays highlights the location and severity of video defects enabling engineers to clearly see and validate the presence of impairments on the image.
- Two instances can be run per license to enable service comparison at different network locations (dependent on PC processing power and video content type)




Applications

- Affordable QoE Monitoring; live monitoring
- Network performance optimization; in-service tuning of network
- Network diagnostics; in-service troubleshooting

Product Documentation

The following table lists the product documentation supporting the VQS1000.

Table i: Product documentation

| Item (Tektronix part number) | Purpose | Location |
|-----------------------------------------------|----------------------------------------------------------------------------|----------------------------------------------------------------------------------------------------------|
| VQS1000 Quick Start User Manual (077-0489-XX) | Provides installation and high-level operational overviews (this document) |  www.Tektronix.com |
| VQS1000 Online Help - Printed (077-0490-XX) | Provides in-depth operating information in context-sensitive form |  www.Tektronix.com |
| VQS1000 Release Notes (077-0492-XX) | Describes late breaking product information and operational issues |  www.Tektronix.com |

Related Products

MTM400A DTV Monitor

The MTM400A DTV Monitor provides a complete solution for multilayer, multichannel, remote monitoring to DVB, ATSC, DCII, and ISDB-T/Tb standards with content-checking support for MPEG-2 and H.264/AVC. Optional RF measurement interfaces provide a powerful and cost-effective solution for monitoring DVB-T transmitter sites or DVB-S/S2 uplinks and downlinks. An in-depth, real-time MPEG analysis option allows diagnostics to be performed on live broadcast signals without having to use deferred-time analysis of captured streams.

IPM400A DTV Monitor

The IPM400A DTV Monitor is a powerful solution for remote monitoring of IP video national and regional headends. The IPM400A simultaneously verifies both IP and TS integrity on all IP Video flows (sessions) on a GbE link. It is ideal for monitoring networks which carry both Multi-Program Transport Streams (MPTS) or Single-Program Transport Streams (SPTS), at either constant bit rate (CBR) or variable bit rate (VBR). An in-depth, real-time MPEG analysis option allows diagnostics to be performed on live payload without having to use deferred-time analysis of captured streams.

QAM400A DTV Monitor

The QAM400A DTV Monitor provides a complete solution for remote real-time monitoring of cable broadcast signals. The comprehensive QAM RF and SI/PSI and PSIP confidence-monitoring capabilities provide a powerful and cost-effective solution for monitoring HFC (hybrid fibre-coaxial) cable headends. An in-depth, real-time MPEG analysis option allows diagnostics to be performed on live ATSC signals without having to use deferred-time analysis of captured streams.

RFM300 DTV Monitor

The RFM300 DTV Monitor provides a complete solution for remote real-time DTV monitoring of ATSC signals. The comprehensive 8VSB RF and PSIP confidence-monitoring capabilities provide a powerful and cost-effective solution for monitoring DTV transmitter sites, including contribution and distribution feeds at local and national operation centers for FCC compliance. An in-depth, real-time MPEG analysis option allows diagnostics to be performed on live ATSC signals without having to use deferred-time analysis of captured streams.

VQNet™ Element Management System

VQNet is a Tektronix Video Monitoring EMS that supports all Tektronix IP Video and DTV Monitor probe types to alert, locate and diagnose video network problems. It is a software product which will run on a server (not Tektronix supplied) to aggregate and report on the status of broadcast signals measured by up to 500 distributed probes across a video distribution network, providing alarms, logs, trending and reporting of key performance metrics.

Related Product Documentation

The following table lists the documentation for Tektronix products related to the VQS1000.

Table ii: Related product documentation

| Item | Tektronix part number | Description |
|-----------------------------------------------------------------------|-------------------------------------------------------------------|--------------------------------------------------------------------|
| MTM400A DTV Monitor Quick Start User Manual | 071-2492-XX English 071-2493-XX Japanese 071-2632-XX German | Provides installation and high-level operational overviews |
| IPM400A DTV Monitor Quick Start User Manual | 071-2698-XX | Provides installation and high-level operational overviews |
| QAM400A DTV Monitor Quick Start User Manual | 071-2784-XX | Provides installation and high-level operational overviews |
| RFM300 DTV Monitor Quick Start User Manual | 071-2700-XX | Provides installation and high-level operational overviews |
| MTM400A, IPM400A, QAM400A, and RFM300 DTV Monitor Read This First | 071-2654-XX | Describes late breaking product information and operational issues |
| MTM400A, IPM400A, QAM400A, and RFM300 DTV Monitor Technical Reference | 077-0175-XX | Provides in-depth operating information |

Installation

This section includes instructions for installing the VQS1000 software and opening the user interface. The section also describes the networking that may be required for basic operation.

NOTE. *Some of the installation instructions require you to use the DTV monitor remote user interface (RUI). If you are unfamiliar with the RUI, refer to the appropriate manual.*

Before Installation

Check that you have received or downloaded all of the standard accessories. All components of the VQS1000 application are downloaded from the Tektronix Web site (www.tektronix.com/software). This will make sure that you will always receive the most current release of the application.

System Requirements

The following minimum PC configuration is recommended for installing the VQS1000:

- Operating system: Microsoft Windows XP, SP3 or Windows 7
- PC processor requirements: Xeon 5500 series (i7 based) quad-core processor or equivalent
- Memory: 4 GB RAM minimum
- Hard disk space: 250 GB minimum

NOTE. *The VQS1000 application will run satisfactorily on a PC with the preceding specifications. However, some of the more intensive operations will benefit from using a more powerful PC.*

Alternatively, you can install the VQS1000 application on an MTS400 Series MPEG Test System.

If you intend using a Tektronix DTV Monitor as a stream source, the minimum monitor firmware version is Version 4.6.

Software applications. The Microsoft '.NET Framework 3.5 SP1' software library is required by the VQS1000 application. If it is not already installed on your computer, the VQNet application installer will automatically install this during the installation process.

Application licensing. The VQS1000 software is enabled on your PC and on the MTS400 Series units by applying unique Option Key strings using the License Management dialog box; the option key string is unique to the dongle (software key) that is to be used. Enabling the software can be done as part of the installation procedure. If you have purchased and downloaded the standalone option, the USB dongle will be supplied separately. (See page 3, *Licensing the VQS1000 Application.*)

Installation requirements.

You will need the following items:

- A PC that meets the system requirements (See page 1, *System Requirements.*)
- VQS1000 installation software (downloaded from www.tektronix.com/software)

- Dongle
- Option key string

Standard Accessories

You can download the VQS1000 software from the Tektronix Web site (www.tektronix.com/software). The following table lists the standard accessories that are shipped for the VQS1000 software.

Table 1: Standard accessories

| Accessory | Tektronix part number |
|--------------------------------------------------------------------------------------------------------------------------------------------------------------------|-----------------------|
| Thank You Letter | 001-1532-XX |
| Option Key Certificate | NA |
| Identification stickers | NA |
| Security dongle | |
| Option USB provides a USB dongle to license a standalone VQS1000 software installation | NA |
| Option LUD provides no dongle since the VQS1000 software will be installed on a MTS400 Series product and will use the existing MTS400 Series dongle for licensing | NA |

Installing the VQS1000 Software

Perform the following steps to install the VQS1000 software. Note that third-party software applications required by the VQS1000 software will also be installed if required.

1. Download the VQS1000 application installation file from the Tektronix Web site.
 - a. In Internet Explorer, enter *www.tektronix.com* in the address bar and press enter.
 - b. On the Tektronix home page, in the Downloads area, enter the Model Number, **VQS1000**, and select **Software** from the Select Download Type list. Select **Go**.
 - c. On the Download Finder page, select the VQS1000 software application installer entry.
 - d. On the VQS1000 software application installer page, check the Version and Release Date, and review the Release Notes and Installation Instructions.
 - e. Select **Download File**.
 - f. Identify a location for the download on your PC, and allow the file to download.
2. From the download location on your PC, double-click the VQS1000 setup file, *VQS1000_setup.exe*.
Follow the on-screen instructions to perform the installation.

NOTE. Several message boxes are displayed during the installation process. A reboot of your PC may be required.

If needed, Microsoft .NET Framework will be installed or updated on your PC automatically during the installation process.

3. When the final installation screen is displayed, the installation is complete.

NOTE. Continue with Licensing the VQS1000 Application; (See page 3, Licensing the VQS1000 Application.) This activity must be completed before you can use the VQS1000 application. If you choose not to license the application at this point, you will have to do it when you open the application for the first time.

4. In the final VQS1000 installation screen, select the **Launch Tektronix VQS1000** check box.

Licensing the VQS1000 Application

To license your VQS1000 for use on either a PC or an MTS400 Series system, a license key string must be applied to the instrument after the software is installed.

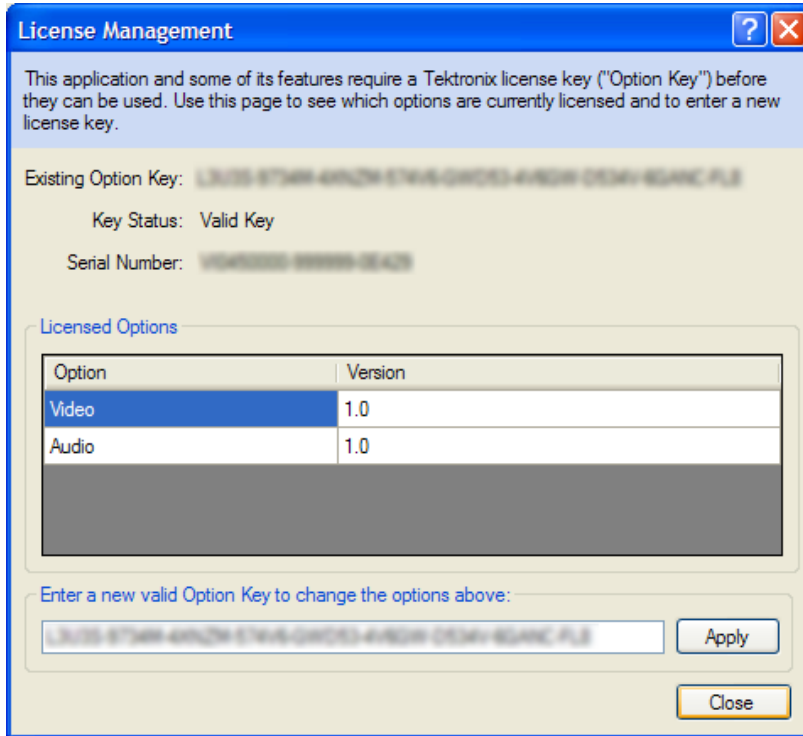
NOTE. On a single PC, you are licensed to open two instances of the VQS1000 application simultaneously.

Perform the following steps to license the VQS1000 application software:

1. Make sure that the dongle (software key), that you received when you ordered the VQS1000, is mounted in a USB port in your PC, or that your existing MTS400 dongle (software key), is mounted in the MTS400 instrument, and that your new license key string is available.

NOTE. If you get a message that your PC does not recognize the dongle hardware, you need to install the DESkey driver on your PC.

2. Open the VQS1000 License Management dialog box.
 - a. If you selected the **Launch Tektronix VQS1000** check box in the final VQS1000 installation screen, the License Management dialog box should already be displayed.
 - b. or, select **Start > Tektronix > Tektronix VQS1000 Video Quality Test Suite**.



3. Enter the option key string that you received with your dongle in the **New Option Key** field and click **Apply**.

Note that the options requested are now available, and that the option key string that you entered is displayed in the **Existing Option Key** field.

4. After closing the dialog box, continue to use the VQS1000 software.

NOTE. Depending on the Windows User Account Control settings, you may be prompted with the User Account Control dialog box asking for permission to make changes. For example, in response to the question "Do you want to allow the following program to make changes to this computer?", use the following values: Program name: optkey_console; Verified publisher: Tektronix U.K. Ltd.

5. Attach the VQS1000 identification sticker to your PC. You may be asked for your product serial number if you contact Tektronix for product assistance.

Starting and Closing the VQS1000 Application

Starting the VQS1000 Application from your Desktop

Perform the following steps to start the VQS1000 application:

1. From a computer with the VQS1000 application software installed, select **Start > Tektronix > Tektronix VQS1000 Video Quality Test Suite**.
2. To start analyzing a stream, refer to the Application example in this manual, or in the application window, select **Help > Help**, and consult the online help to start analyzing a file either offline or in real-time.

Closing the VQS1000 Application

To close the VQS1000 application, select **Exit** from the **File** menu.

Using the Software

This section describes the basics of how to use the software.

Getting Acquainted with the Software

This section provides brief descriptions of the screen display elements. Modify the size of individual panels by dragging the borders as required.

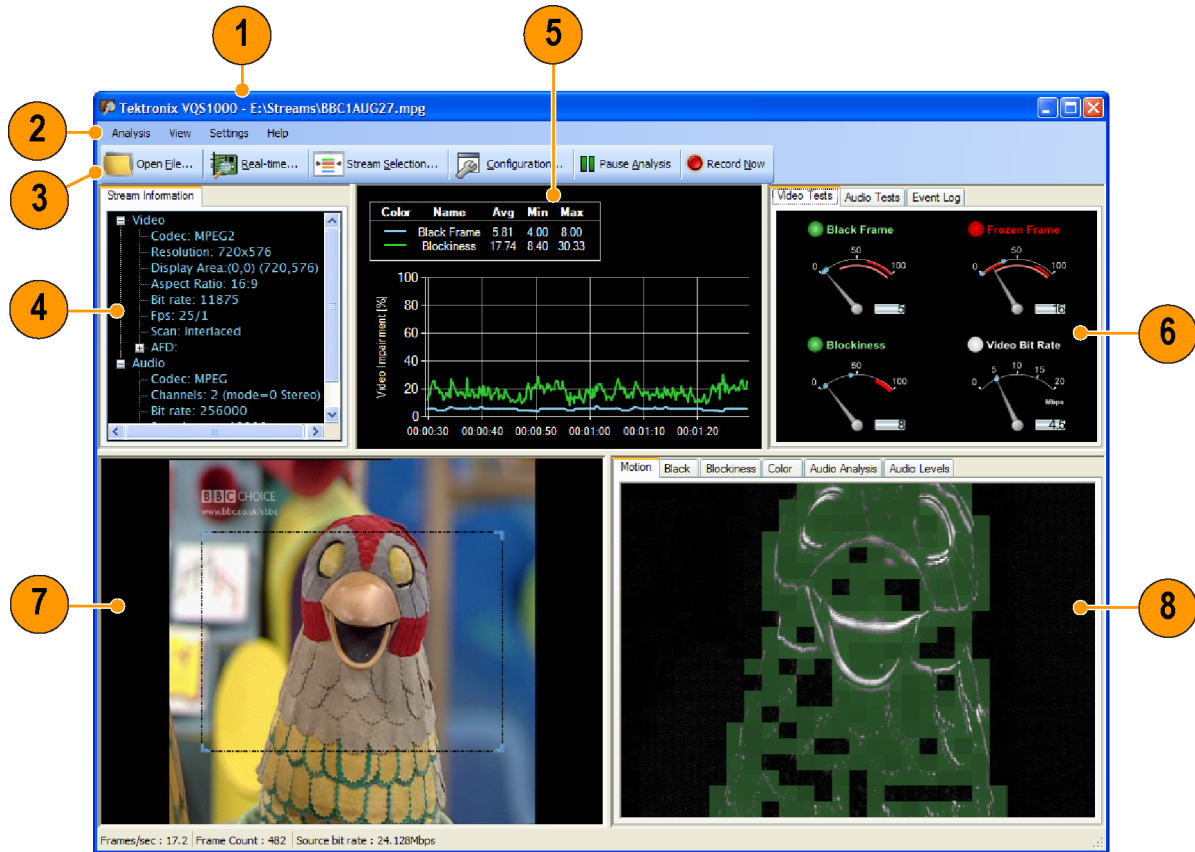


Table 2: VQS1000 display elements

| Item | Element | Item | Element |
|------|----------------------------------|------|-------------------------------------|
| 1 | Title Bar (See page 7.) | 5 | Trend Graphs (See page 8.) |
| 2 | Menu Bar (See page 7.) | 6 | Video and Audio Tests (See page 8.) |
| 3 | Toolbar (See page 8.) | 7 | Source Image (See page 8.) |
| 4 | Stream Information (See page 8.) | 8 | Processed Images (See page 9.) |

Title Bar

The title bar displays the application title and the source file name.

Menu Bar

The Menu bar includes four menus, each containing related options; the menus are titled Analysis, View, Settings, and Help. Where available, shortcut keys are displayed next to the menu option.

Table 3: Menu bar options

| Menu | Options | Description |
|---------------|-------------------------|---------------------------------------------------------------------------------------------------------------------------------------------------------------------------------------------------------------------------------------|
| Analysis menu | Open File | Select a file for offline analysis |
| | Real-time | Select IP traffic present on your network card for analysis. Alternatively, start analysis from an associated DTV monitor. |
| | Pause/Resume Analysis | Select this button to pause or resume analysis. |
| | Record Now | Select this button to start recording immediately. |
| | Stream Selection | Select an elementary stream for analysis. |
| | Recent Files | Displays the names of the most recently opened files. |
| | Exit | Terminates analysis and closes the application. |
| View menu | Dashboard Layout | Selecting this option hides/shows the dashboard panels - Stream Information, Trend Graphs, and Video and Audio Tests. This provides more screen space for the visual analysis panels - Source view and Processed Image. |
| Settings menu | Configuration | Opens Configuration dialog box. |
| | Recording | Opens the Recording Settings dialog box. |
| | Use Polling | When enabled, the VQS1000 will poll services within a real-time MPTS. <i>NOTE. Polling is not applicable for offline file analysis.</i> |
| | Reset All Peak Markers | Select this option to reset the peak markers on the video and audio test meters. |
| Help | Help | Opens the VQS1000 online help window. Access your area of interest using the navigation pane of the help window. Context sensitive help is also available by selecting a screen display element and pressing F1 key on your keyboard. |
| | License Management | Opens the License Management dialog box. |
| | About Tektronix VQS1000 | Displays the software version number. You will need this number if you call Tektronix for technical support. |

Toolbar

The buttons displayed on the Toolbar provide links to set-up dialog boxes used to set up and run the application.

Table 4: Toolbar buttons

| Button | Description |
|-----------------------|----------------------------------------------------------------------------------------------------------------------------|
| Open File | Select a file for offline analysis. |
| Real-time | Select IP traffic present on your network card for analysis. Alternatively, start analysis from an associated DTV monitor. |
| Stream Selection | Select an elementary stream for analysis. |
| Configuration | Opens configuration dialog box. |
| Pause/Resume Analysis | Select this button to pause or resume analysis. |
| Record Now | Select this button to start recording immediately. |

Stream Information

This panel provides a summary of the video and audio stream information, including the codec being used and the current bit rate.

Trend Graphs

This panel shows trend graphs for video and audio measurements. You can select which measurements are displayed, and the time period over which data is displayed; a variety of plot line displays can also be selected. A legend panel, displayed at the top of the trend graph panel, can be toggled on and off either by double-clicking in the panel, or selecting or clearing the option in the shortcut menu.

The following video graphs are available: Black Frame, Blockiness, Frozen Frame, and Video Bit Rate. Similarly, the following audio graphs are available: Loudness (short term), Loudness (long term), True Peak, and Target (Dial Normal).

Video and Audio Tests

This panel contains test related meters which give a visual indication of the test status. The following video tests are displayed: Black Frame, Blockiness, Frozen Frame, and the Video Bit Rate of the selected elementary stream. Similarly, the following audio tests are displayed: Loudness (short term), Loudness (long term), True Peak, and Target Delta.

You can set upper and lower thresholds for each test that will generate an alarm when the thresholds are crossed. Where a stream is being received from a DTV Monitor, the alarm state is passed back and flagged in their respective screen displays.

Event Log

The event log panel records alarm activity that has occurred since the last time that the log was cleared. You can export the log file in CSV (comma separated values) format for detailed inspection.

Source Image

This panel displays the source image; the selected video stream. You can select the area of the source image to be processed and displayed in the processed image panel.

Processed Images

The processed image panels display analyses of the area that you have selected in the source image. The following processed image analyses can be selected: Motion, Black, Blockiness, and Color. Two audio analysis tabs are displayed: Audio Analysis and Audio Levels.

Status Bar

The status bar displays the current analysis status, including brief progress reports and the received bit rate.

Configuring a DTV Monitor for Use with the VQS1000 Software

For the VQS1000 application to work with the DTV Monitor, the VQS1000 player must be set up correctly in the DTV Monitor.

Setting Up the VQS1000 Player in the DTV Monitor

1. Open the DTV Monitor remote user interface (RUI).
2. Select Configuration on the Toolbar to open the Configuration dialog box.
3. In the dialog box, select **Preferences > Decode**.
4. In the Select Player panel, select the **Tektronix VQS1000** player.



CAUTION. *If the VQS1000 player is not present in the player list, check that the latest version of the firmware is installed in the DTV Monitor. The minimum firmware version is Version 4.6. Refer to the DTV Monitor documentation for details of how to update the firmware. (See page v, Related Product Documentation.)*

5. Select **OK** to enable the VQS1000 player.

Selecting a Stream for Analysis

Use the following steps to set up backhauling of a stream from a DTV Monitor:

1. Open the DTV Monitor Remote User Interface (RUI).
2. Select the **Analysis > Programs > Thumbnails** tab to display thumbnails of the stream content.
3. Select the Play (▶) button below the thumbnail. The VQS1000 application is opened and displays analysis of the selected stream.

NOTE. *Where an audio stream are available, selecting the associated audio button will open and analyze the audio stream in addition to the video stream. In the case of multiple audio streams, alternative language versions for example, the audio stream identified in the adjacent drop-down list will be analyzed.*

NOTE. *If the video backhaul fails, check the presence and status of the firewall on the VQS1000 host PC.*

Application Examples

This section provides the following application examples:

- Analyzing video files
- Backhauling video from a DTV monitor
- Analyzing real-time IP video

Analyzing Video Files

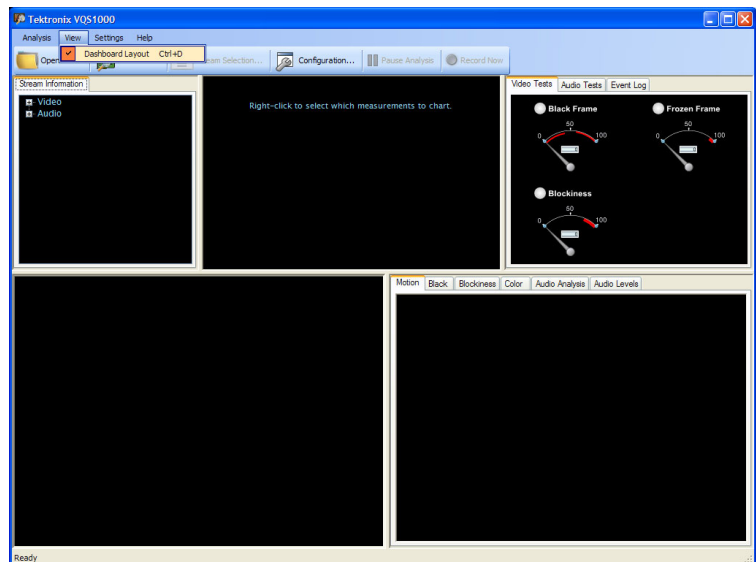
Start Up

1. Make sure that the time and date on the VQS1000 host PC are set accurately.
This will make sure that the VQS1000 timeline and log statistics are recorded properly.
2. Make sure that a dongle, with the appropriate licensing information, is attached to the host PC.
3. Select **Start > Tektronix > Tektronix VQS1000 Video Quality Test Suite**.
Wait for the application to open.

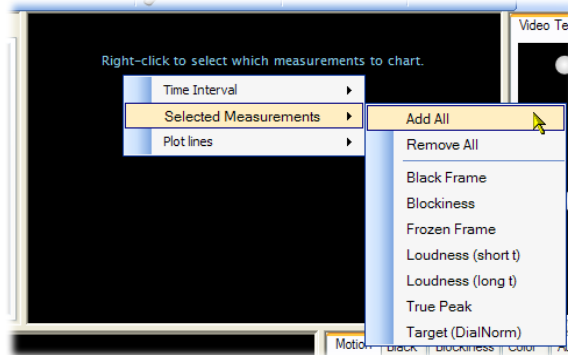
Configuration and Setup

4. Make sure that **View > Dashboard Layout** is checked.
This ensures that all of the panels are visible. These are needed to complete this example.
If you clear the **View > Dashboard Layout** check box, only the two lower panels are displayed (source image and processed image panels). Use this view when you want to analyze the stream visually only.
5. Drag the borders of the display panels to adjust the sizes, as required.
6. In the source image panel, select **Reset Graticule** from the right-click context menu.

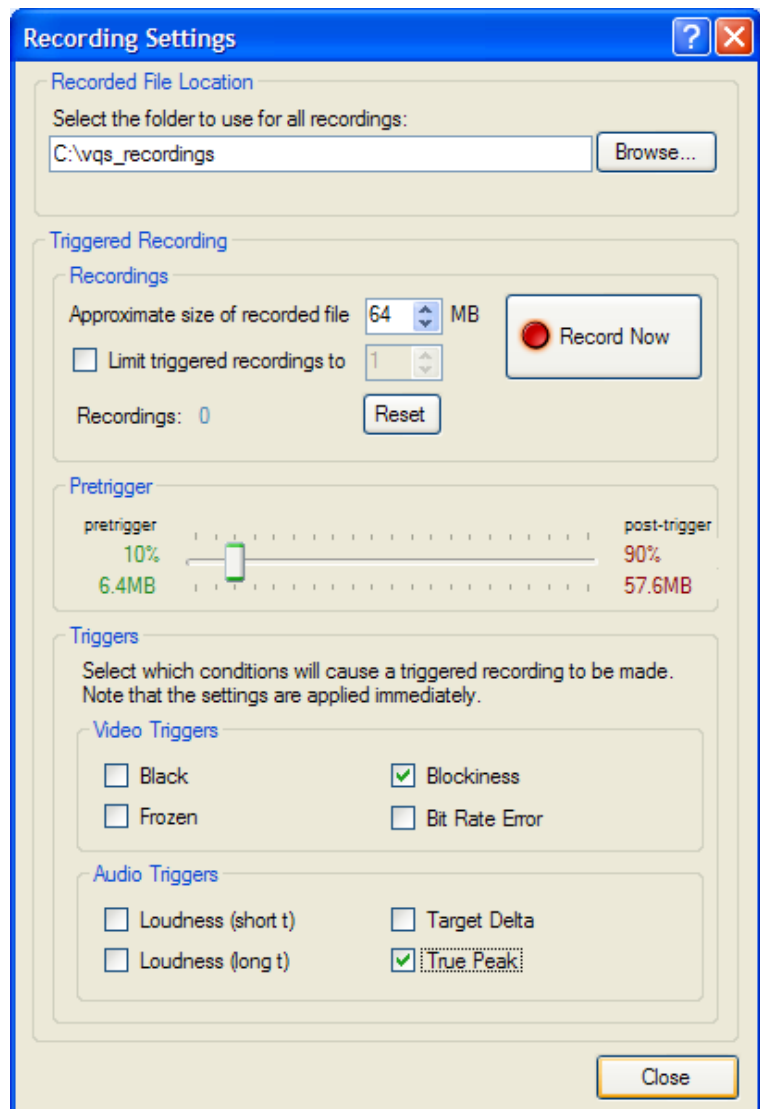
This sets the graticule window to default size: that is, the graticule is centered on two thirds of the standard SD/HD frame.



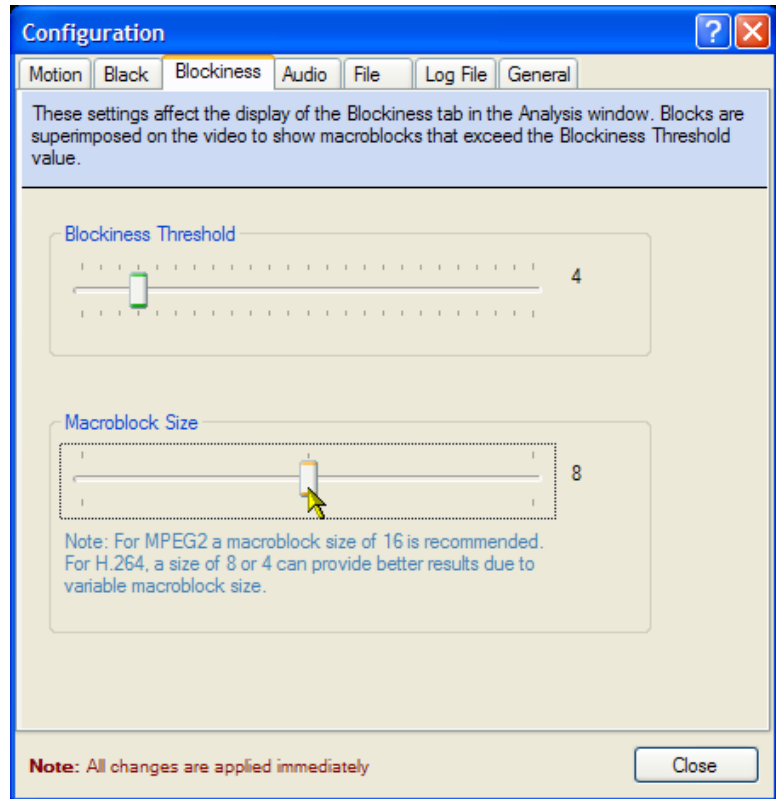
7. In the Trend Graphs panel, right-click and select **Time Interval > Last Minute** from the context menu.
8. In the Trend Graphs panel, select **Selected Measurements > Add All**.



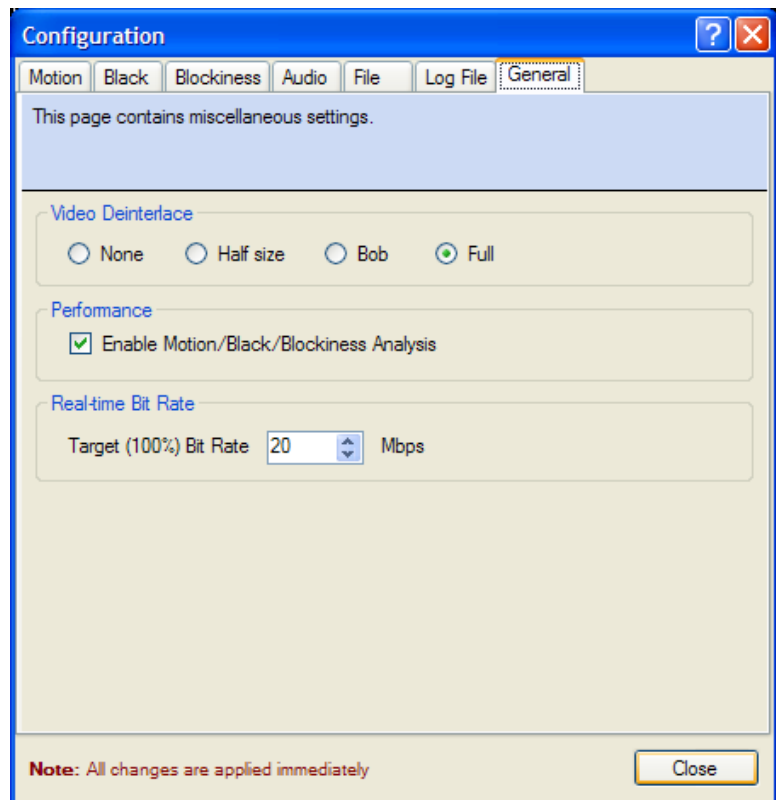
9. Select **Settings > Recording** to open the Recording Settings dialog box.
Make a note of the folder that is to be used for recordings. You can change this.
10. Select the Video Triggers **Blockiness** check box.
11. Close the dialog box.



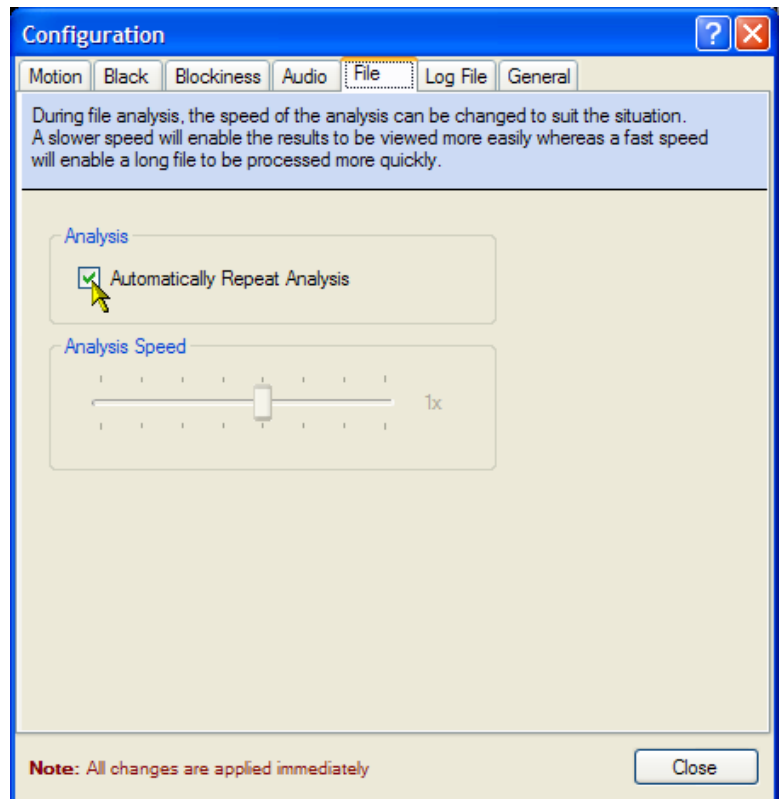
12. Select **Settings > Configuration** to open the Configuration dialog box.
13. In the Configuration dialog box, select the **Blockiness** tab.
14. Set the **Macroblock Size** slider to **8**.



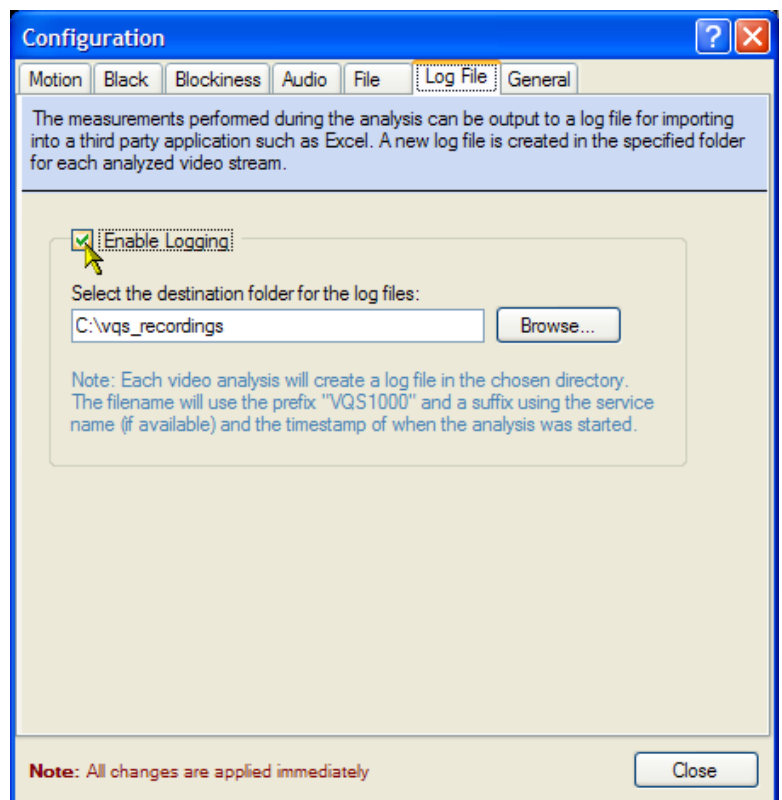
15. In the Configuration dialog box, select the **Advanced** tab.
16. Select **Full** deinterlacing.



17. In the Configuration dialog box, select the **File** tab.
18. Disable **Automatically Repeat Analysis**. This disables looping of the file.

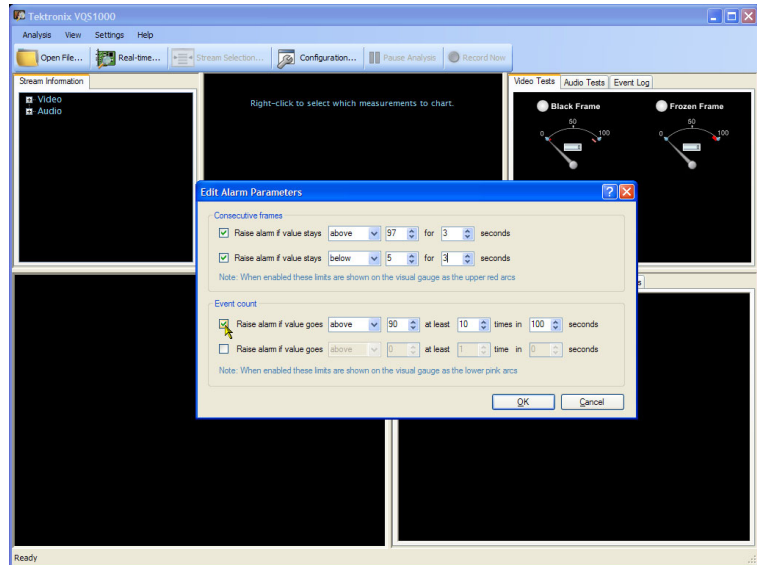


19. In the Configuration dialog box, select the **Log File** tab.
20. Enable **Logging**.
21. Enter a destination path for log files.



Edit Alarm Parameters

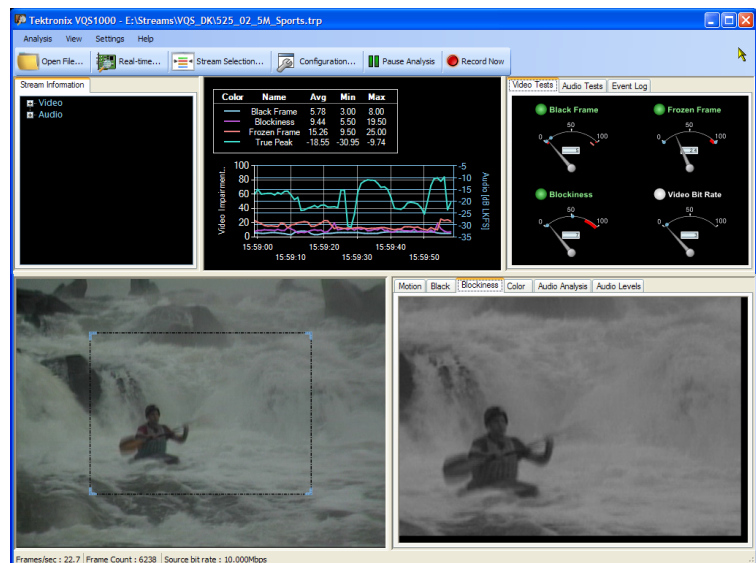
22. In the Video Tests panel, select **Edit Alarm Parameters** from the Black Frame test meter context menu to display the Edit Alarm Parameters dialog box.
23. In the Consecutive frames panel, select one of the **Raise alarm** check boxes. For this exercise, make sure that the other **Raise alarm** check box is cleared.
24. Set **Raise alarm if value stays above 95% for 30 seconds**.
25. In the Event count panel, clear both **Raise alarm** check boxes.
26. Select **OK**.
27. In the Video Tests panel, select **Edit Alarm Parameters** from the Frozen Frame test meter context menu to display the Edit Alarm Parameters dialog box.
28. In the Consecutive frames panel, select the **Raise alarm** check box.
29. Set **Raise alarm if value stays above 97% for 3 seconds**.
30. In the Event count panel, select the **Raise alarm** check box.
31. Set **Raise alarm if value stays above 90% for at least 10 times in 100 seconds**.
32. Select **OK**.



33. In the Video Tests panel, select **Edit Alarm Parameters** from the Blockiness test meter context menu to display the Edit Alarm Parameters dialog box.
34. In the Consecutive frames panel, select the **Raise alarm** check box.
35. Set **Raise alarm if value stays above 95% for 3 seconds**.
36. In the Event count panel, select the **Raise alarm** check box.
37. Set **Raise alarm if value stays above 60% for at least 2 times in 6 seconds**.
38. Select **OK**.

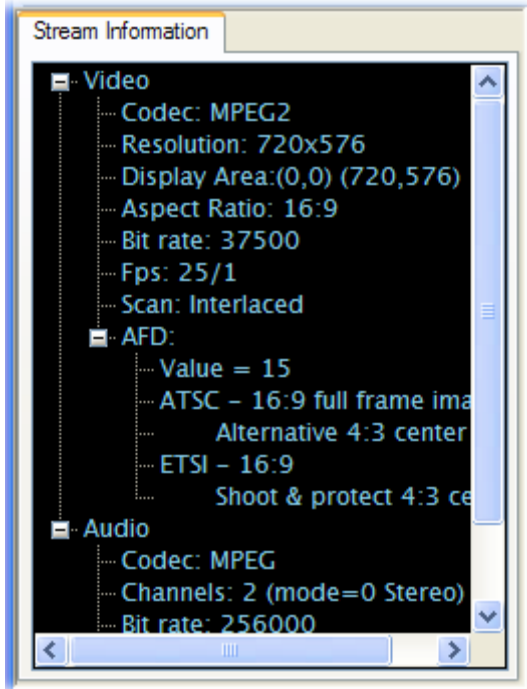
File Analysis

39. Select **Analysis > File Analysis**.
40. In the Select a file dialog box, locate and select a file for analysis.
In this application example, the file 525_02_5M_sports.trp is used. If you use a different file, some of the data displayed will be different.
41. Select **Open**.



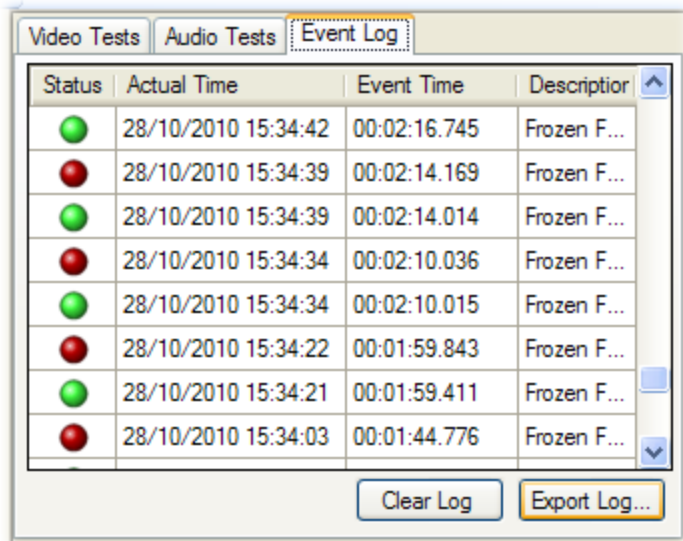
42. In the Stream Information panel, note that the Resolution is 720 x 576, and the Scan is Interlaced.

The stream information bit rate is that reported in the stream. The bit rate displayed in the status bar is the received bit rate. The Video Bit Rate test meter displays the bit rate of the selected elementary stream.



43. Select the Event Log tab in the Video and Audio Tests panel. Note that any triggered events are recorded; the recorded file is stored in the folder specified in the Log file configuration settings.

44. Select **Export Log** to export the event log to a csv (comma separated value) file.



45. After about two minutes, use Windows Explorer to locate and open a triggered file report. The file name will be of the format, vqs1000_log.<date>T<time>.csv, for example, vqs1000_log.2010-11-11T11-29-45.csv.

You can open this file in Microsoft Excel or similar spreadsheet tool. Each row in the file represents 60 seconds of event data. Each row, in addition to the time and date, contains the minimum, mean, and maximum values recorded for each of the video and audio tests.

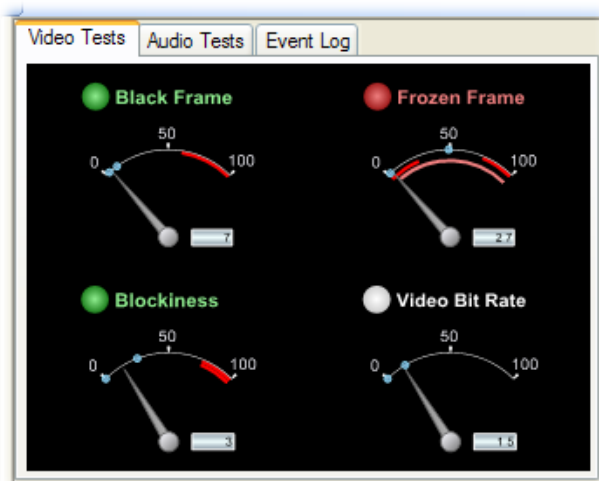
| Timestamp | Video PID | Audio PID | Black Frame_mean | Black Frame_min | Black Frame_max | Blockiness_mean | Blockiness_min | Blockiness_max | Frozen Frame_mean | Frozen Frame_min | Frozen Frame_max | Loudness_mean | Loudness_min | Loudness_max | Loudness_min |
|-----------|-----------|-----------|------------------|-----------------|-----------------|-----------------|----------------|----------------|-------------------|------------------|------------------|---------------|--------------|--------------|--------------|
| 01:00.0 | 600 | 601 | 6.86 | 5 | 12 | -1 | -1 | -1 | 74.57 | 0 | 100 | - | - | - | - |
| 04:00.0 | 600 | 601 | 8.86 | 5 | 20 | -1 | -1 | -1 | 62.78 | 4 | 100 | -25.02 | -34.57 | -21.72 | -22.46 |
| 05:00.0 | 600 | 601 | 9.34 | 2 | 18 | -1 | -1 | -1 | 75.18 | 1 | 100 | -25.02 | -34.57 | -21.72 | -22.46 |
| 07:00.0 | 600 | 601 | 6.75 | 5 | 12 | -1 | -1 | -1 | 76.72 | 2 | 100 | -25.64 | -38.28 | -19.18 | -22.58 |
| 08:00.1 | 600 | 601 | 8.11 | 4 | 17 | -1 | -1 | -1 | 53.67 | 2 | 100 | -20.69 | -35.06 | -17.06 | -22.69 |
| 09:00.0 | 600 | 601 | 9.83 | 2 | 20 | -1 | -1 | -1 | 41.49 | 0 | 100 | -20.69 | -35.06 | -17.06 | -22.69 |
| 10:00.0 | 600 | 601 | 8.4 | 4 | 16 | -1 | -1 | -1 | 69.59 | 4 | 100 | -21.19 | -33.49 | -18.26 | -22.43 |

46. With the cursor in the source image panel, drag and drop the graticule corner handles and edges to adjust the area being displayed in the processed image panels.

Larger graticule windows require more PC processing.



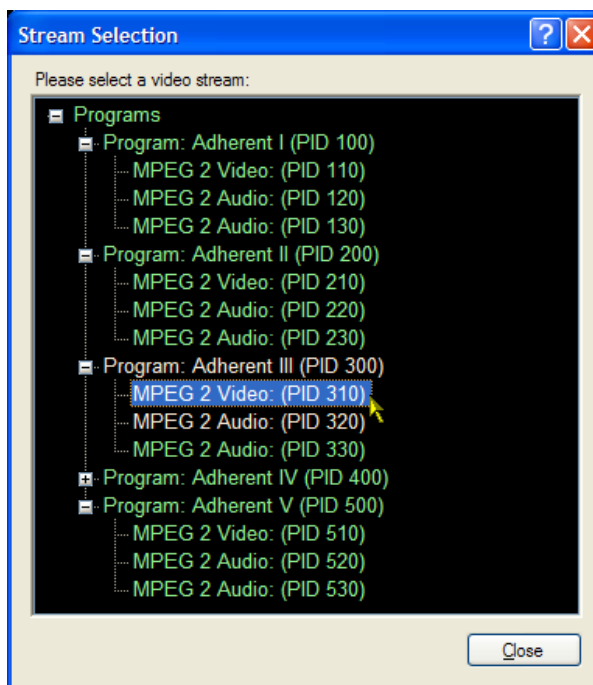
47. Note that where a measurement exceeds the set video test thresholds, the LED icon at the top left of meter will show red. Normally, when there is no error, it will display green or white.



48. Select **Analysis > Stream Selection**.

49. Expand the Program tree.
 Select any of the elementary streams for display. The analysis of the newly selected stream will start immediately.

50. **Close** the Stream Selection panel.



Analyzing Backhauled Video from a DTV Monitor

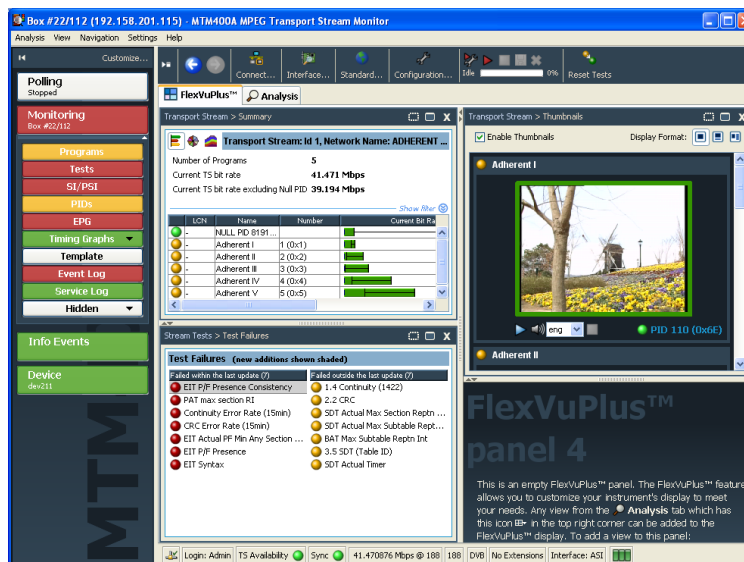
This application example describes how to analyze video that is backhauled from a Tektronix DTV monitor such as an MTM400A, IPM400A, QAM400A, or RFM300. This example uses an MTM400A for illustrative purposes, but you can use any DTV monitor since the operation is the same for any of the monitors.



CAUTION. Before the DTV monitor will operate with the VQS1000 software, firmware version 4.5 or later must be installed on the DTV monitor.

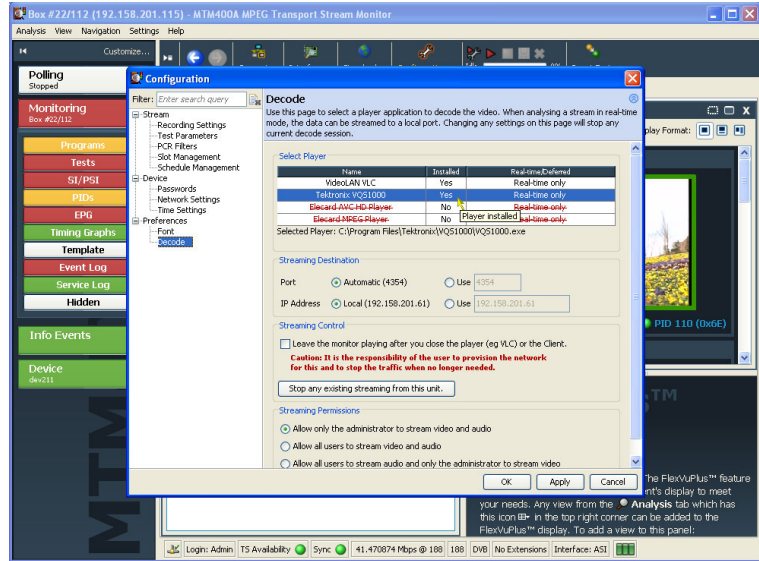
The following application assumes that you have already worked through the previous example and have retained the settings that you made. (See page 10, *Analyzing Video Files*.) It also assumes that you are familiar with the basic operating procedures for a DTV monitor. If necessary, refer to the DTV monitor user documentation. (See Table ii on page v.)

1. Open the MTM400A DTV monitor remote user interface (RUI).
2. Make sure that the stream is being monitored by observing the activity.



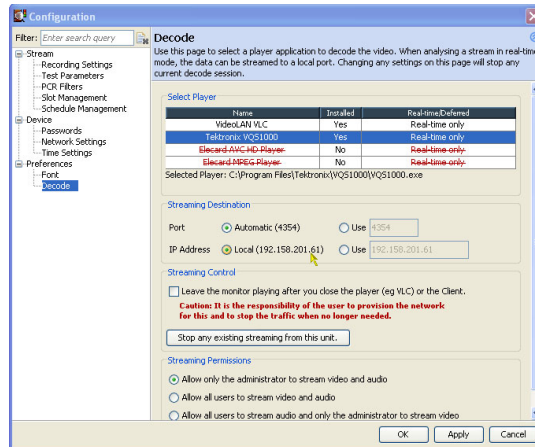
3. In the MTM400A RUI, select **Configuration (toolbar) > Preferences > Decode** to display the Decode configuration dialog box.

4. In the Select Player pane, select the **Tektronix VQS1000** player.
This ensures that when the thumbnail play button is selected, the VQS1000 application launches.



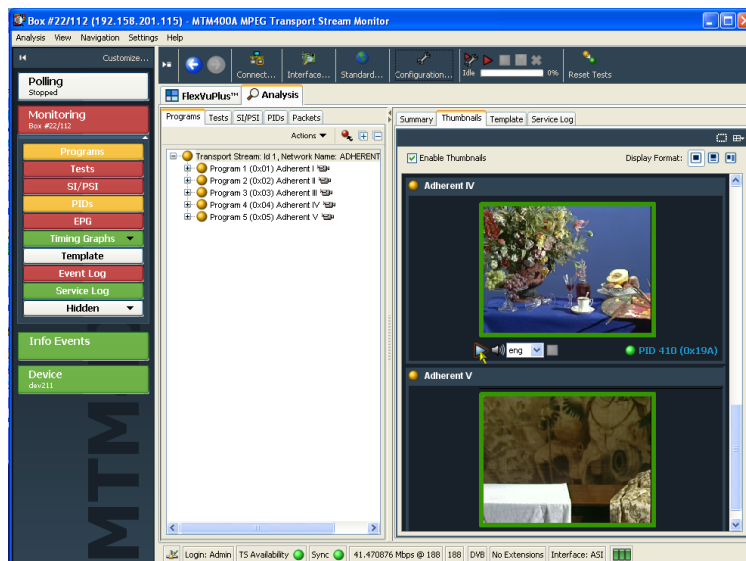
5. In the Streaming Destination pane, note the Automatic Port setting and the Local IP Address (the latter should be the IP address of your PC).

6. Select **OK** to close the dialog box.



7. Select **Analysis** tab > **Programs** > **Thumbnails**.

8. Identify the program to be analyzed by the VQS1000 and select the (blue) play button.



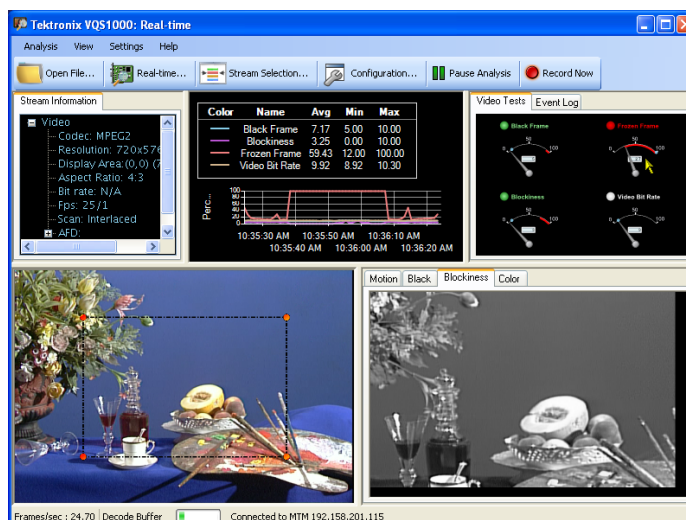
9. The VQS1000 is launched and begins decoding the program frame by frame. The IP address of the source MTM400A is displayed in the VQS1000 status bar.

The Decode Buffer progress indicator, in the status bar, shows you the state of the decode buffer as the file is analyzed. If your PC is unable to process the stream in real-time, you may see breaks in the continuity of the stream.

10. If you have set video and audio measurement thresholds, the associated LED icons in the video and audio test panels will turn red when the threshold is exceeded.

In this example, the frozen frame video test has exceeded the setting that you entered, that is **Raise alarm if value stays above 25 for 1 second**.

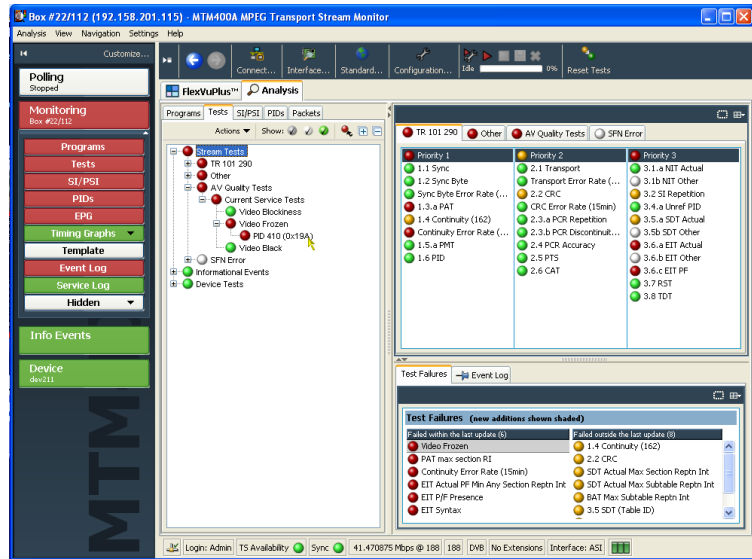
11. You can also see the frozen frame activity in the trend graph panel.



Information is fed back to the DTV monitor, which can be used, as with any other alarm, for logging, recording, and sending traps or enabling physical outputs.

12. In the MTM400A, select the **Tests** tab and in the navigation pane, expand the Stream Tests tree until the AV Quality Tests node is visible.
13. Expand the AV Quality Tests node, and note that the Video Frozen node is indicating either an active error (red) or that an error has occurred (yellow).
14. Highlight the PID causing the error, and note that the Event Log records details of the error.

Remember that when test thresholds are exceeded, the events are recorded in the event log. Also, if you have set recordings to be made when test thresholds are exceeded, the VQS1000 logs and records the minimum, mean, and maximum values in 60 second segments.



Analyzing Real-time Video Over IP

In this application, you will select a network card and identify a stream for analysis in real-time. You must make sure that the PC that the VQS1000 software is installed on is connected to an IP switch that is serving multicast or unicast traffic; consult your network administrator if necessary.

It is assumed that you have worked through the previous two example applications; in particular, the Start Up and Configuration and Set Up procedures. (See page 10.)

1. Select **Start > Tektronix > Tektronix VQS1000 Video Quality Test Suite**.
Wait for the application to open.

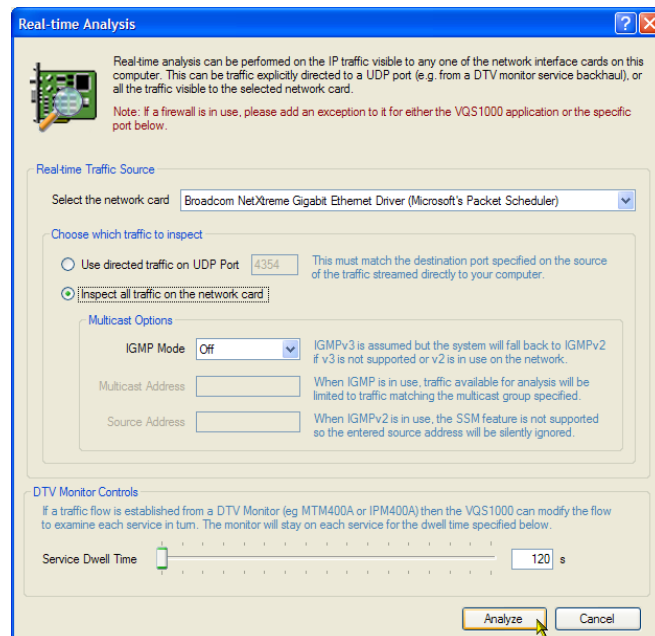
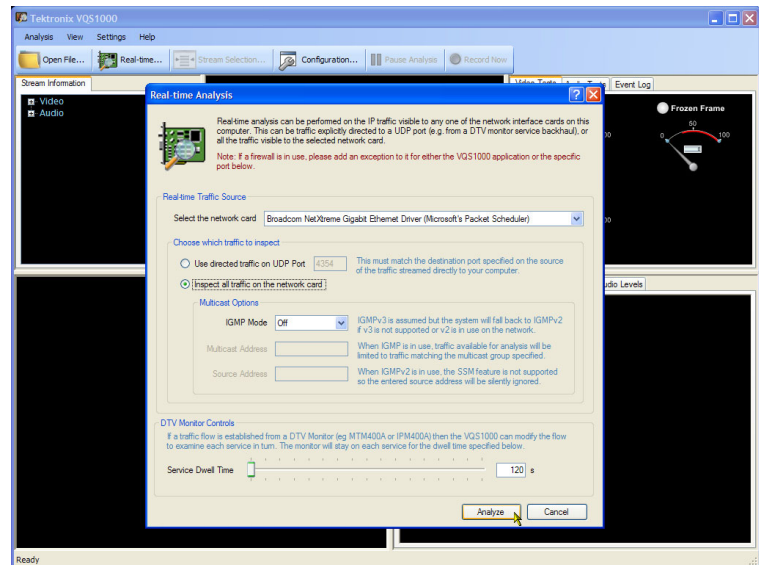
2. Select **Analysis > Real-time** to open the Real-time Analysis dialog box.
3. Select a Network card from the drop-down list.
4. You can choose either:
 - to use directed traffic on a designated UDP port,
 - to inspect all traffic present on the selected network card.

For this example, select the **Inspect all traffic** option button.

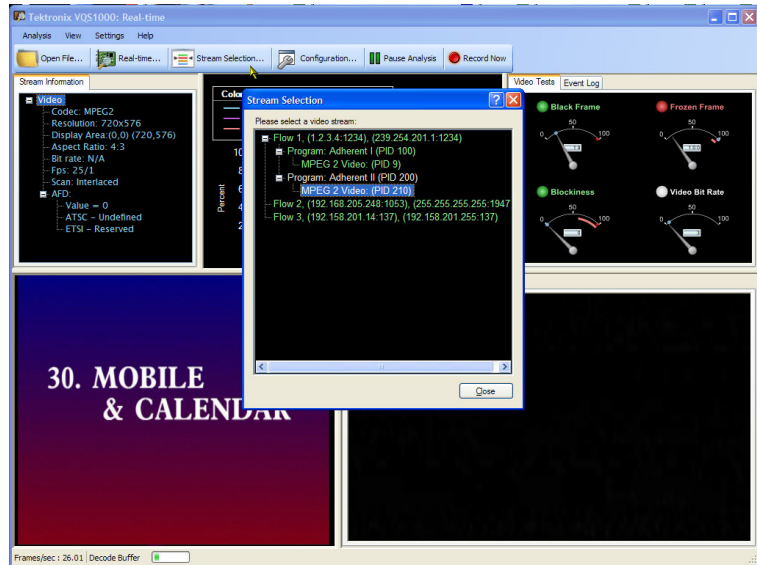
NOTE. For this example, set the IGMP mode to Off.

NOTE. If the video backhaul subsequently fails, check the presence and status of any firewall on the VQS1000 host PC. The firewall should allow communication with the VQS1000.

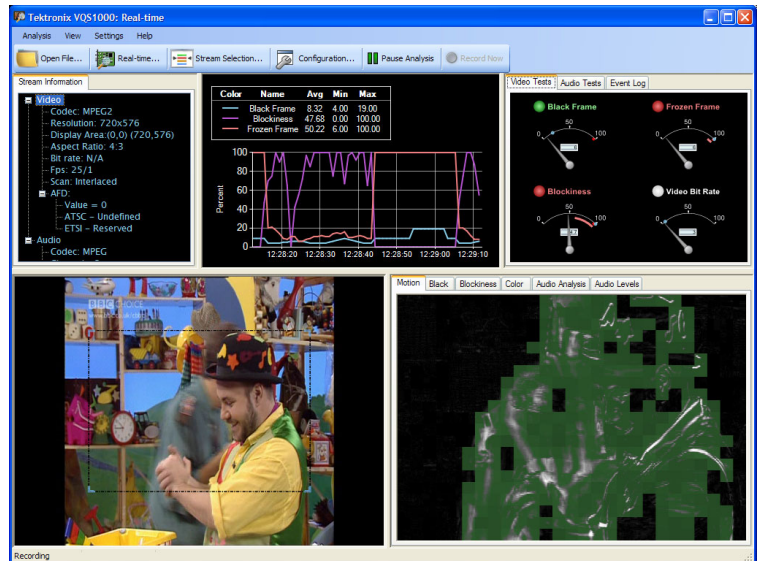
5. Select **Analyze** to close the Real-time Analysis dialog box and start the analysis.
6. Initially, **Waiting for Data** is displayed in the left side of the status bar. When there is enough data in the Decode Buffer, the status bar message changes to **Frames/sec** and analysis begins.



7. Select **Analysis > Stream Selection** to open the Stream Selection dialog box.
The Stream Selection dialog box displays all of the traffic available to the selected network card. You may need to wait for a short time until all of the traffic details are available to display.
8. Expand each of the program nodes to see all of the video streams that are available.
9. Select a stream. Analysis starts almost immediately.
10. Close the Stream Selection dialog box.



11. Continue with the analysis and measurements as described in the previous application examples. (See page 10.)



Product Options and Upgrades

Options

The following table lists the software options that you can order with the VQS1000 Video Quality Software.

Table 5: VQS1000 options

| Item | Option | Description |
|---------|--------|-----------------------|
| VQS1000 | AUD | Audio analysis option |

Field Upgrade Kits

Field upgrade kits are software upgrades that you can install after you purchase the VQS1000 Video Quality Software.

Table 6: VQS1000 field upgrade kits

| Item | Option | Description |
|-------|--------|------------------------------------------------------------|
| VQSUP | AUD | Add audio analysis option to existing VQS1000 installation |

Upgrading the VQS1000 Software

The procedure for upgrading your VQS1000 software is exactly the same as for installing new software. (See page 2, *Installing the VQS1000 Software*.) The previous version of software is automatically removed prior to the installation of the new software. If you have purchased extra options, you will need to apply the new license key that you have been supplied with.

Index

A

- Accessories
 - standard, 2
- Analyzing backhauled video from a DTV monitor, 19
- Analyzing real-time video over IP, 22
- Analyzing video files, 10
- Applications, iii

C

- Closing the software, 5
- Compliance information, ii

D

- Display elements, 6
 - event log, 8
 - menu bar, 7
 - processed images, 9
 - source image, 8
 - status bar, 9
 - stream information, 8
 - title bar, 7
 - toolbar, 8
 - trend graphs, 8
 - video tests, 8
- Documentation
 - user, iv
- DTV monitor configuration, 9

E

- Element Management System
 - VQNet, v

- Environmental considerations, ii

F

- Features, iii

I

- Installation, 1
 - requirements, 1
 - VQS1000, 2
- IP video analysis, 22
- IPM400A, iv
 - configuration, 9

K

- Key features, iii

L

- Licensing, 3

M

- MTM400A, iv
 - configuration, 9

O

- Options, 25

P

- Polling, iii
- Product documentation, iv

Q

- QAM400A, iv
 - configuration, 9

R

- Real-time analysis, 22
- Recycling, ii
- Related products, iv
- RFM300, iv
 - configuration, 9

S

- Stand-alone
 - system requirements, 1
- Starting the software, 5
- System requirements, 1

U

- Upgrade
 - field, 25
 - procedure, 25
- User documentation, iv
- User interface, 6

V

- VQNet, v
- VQS1000
 - closing, 5
 - installation, 2
 - starting, 5