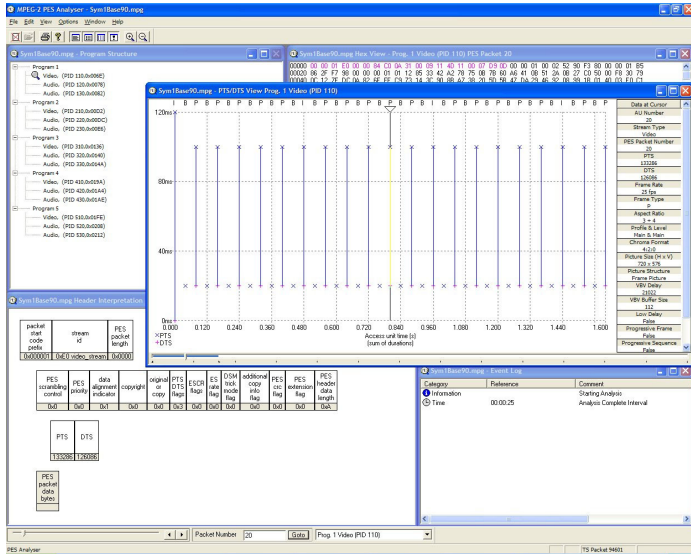


MTS400 Series MPEG Analysis Tools

Packetized Elementary Stream (PES) Analyzer Data Sheet



Features & Benefits

- Verifies Conformance of the PES Header Contents to the MPEG, DVB, and ATSC Standards
- Analyze PES Header Contents
- Compare Actual Presentation and Decode Time Stamps (PTS/DTS) Values with Calculated Values
- Detects Encoder Drift Against Real-time Errors
- Displays the Most Important Elementary Stream Field Values for a Selected Access Unit

Characteristics

Applications

When developing professional and consumer equipment, particularly encoders and set-top boxes, the characteristics of the test streams being either generated or used as stimulus need to be ascertained. The header associated with each PES packet is of particular interest, as it contains the decode and presentation time stamps (DTS and PTS) for the contained Elementary Stream. Errors in these time stamps may cause resets or picture freeze problems at the receiver in extreme cases. They are more typically the cause of lip sync problems where the time stamps of associated video and audio streams are not synchronized.

Supported CODECs

- MPEG-2 Video
- MPEG-2 Audio
- MPEG-2 AAC Audio
- MPEG-4 AAC Audio
- AC-3 Audio

Standalone Software System Requirements (MTS4SA)

- PC with Genuine Intel Pentium class 1.2 GHz processor
- Intel or 100% compatible motherboard chipset
- Windows 2000 or Windows XP Operating System
- Internet Explorer 5.0 or above
- 256 MB of RAM
- 50 MB of available hard disk space for the application and documentation
- SVGA (800 × 600) resolution video adapter and monitor (XVGA (1024 × 768) or higher resolution recommended)
- CD-ROM or DVD drive
- Keyboard and Microsoft Mouse or compatible pointing device

Ordering Information

PES Analyzer

This application is available on MTS400 Series analyzer instruments, as MTS4SA standalone software, and on MTX/RTX Series generator instruments.

Additional Information

Please contact your local Service Manager for information regarding our products and services, or contact us at: www.tektronix.com/serviceandsupportcontactus



Product(s) are manufactured in ISO registered facilities.



Product(s) complies with IEEE Standard 488.1-1987, RS-232-C, and with Tektronix Standard Codes and Formats.

Contact Tektronix:

- ASEAN / Australasia (65) 6356 3900
- Austria +41 52 675 3777
- Balkans, Israel, South Africa and other ISE Countries +41 52 675 3777
- Belgium 07 81 60166
- Brazil +55 (11) 40669400
- Canada 1 (800) 661-5625
- Central East Europe, Ukraine, and the Baltics +41 52 675 3777
- Central Europe & Greece +41 52 675 3777
- Denmark +45 80 88 1401
- Finland +41 52 675 3777
- France +33 (0) 1 69 86 81 81
- Germany +49 (221) 94 77 400
- Hong Kong (852) 2585-6688
- India (91) 80-42922600
- Italy +39 (02) 25086 1
- Japan 81 (3) 6714-3010
- Luxembourg +44 (0) 1344 392400
- Mexico, Central/South America & Caribbean 52 (55) 54247900
- Middle East, Asia, and North Africa +41 52 675 3777
- The Netherlands 090 02 021797
- Norway 800 16098
- People's Republic of China 86 (10) 6235 1230
- Poland +41 52 675 3777
- Portugal 80 08 12370
- Republic of Korea 82 (2) 6917-5000
- Russia & CIS +7 (495) 7484900
- South Africa +27 11 206 8360
- Spain (+34) 901 988 054
- Sweden 020 08 80371
- Switzerland +41 52 675 3777
- Taiwan 886 (2) 2722-9622
- United Kingdom & Ireland +44 (0) 1344 392400
- USA 1 (800) 426-2200

For other areas contact Tektronix, Inc at: 1 (503) 627-7111

Updated 30 October 2008

For Further Information. Tektronix maintains a comprehensive, constantly expanding collection of application notes, technical briefs and other resources to help engineers working on the cutting edge of technology. Please visit www.tektronix.com



Copyright © Tektronix, Inc. All rights reserved. Tektronix products are covered by U.S. and foreign patents, issued and pending. Information in this publication supersedes that in all previously published material. Specification and price change privileges reserved. TEKTRONIX and TEK are registered trademarks of Tektronix, Inc. All other trade names referenced are the service marks, trademarks, or registered trademarks of their respective companies.

29 Jul 2009

2AW-21199-0

