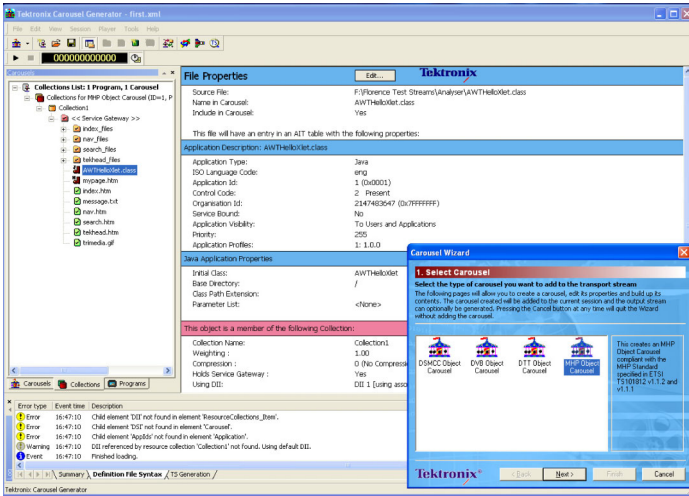


MTS400 Series MPEG Analysis Tools

Carousel Generator Data Sheet



Characteristics

Applications

The Carousel Generator product is used for creating object carousel contents within an output Transport Stream. This is particularly useful in test situations where the effects of varying parameters, such as individual repetition intervals, may be quickly ascertained. The generator will create object carousels conforming to the MPEG-2 DSM-CC, DVB, DTT (MHEG-5), or MHP standards.

Feature Details

Operation and Main Views

During a Carousel Generator session, data objects are assembled into one or more carousels. Video and audio content may also be added. Mandatory SI tables are added automatically. The structure of the carousel may be saved in XML format for further editing in another session. The end result of a session is the creation of a Transport Stream file.

Three main views of the assembled stream are available: Carousels, Collections, and Programs. Each view displays aspects of the stream from a single perspective.

- The **Carousels** View lists the carousels and the associated objects that are included in the session.
- Objects associated with a carousel can be grouped together in **Collections**. The properties of each collection can be adjusted to give the most efficient delivery in the transport stream.
- The Program session window displays the contents of the stream from the **Program** or Service prospective. This provides access to the signalling information (SI).

Properties and Log Views

The Properties View provides an immediate view of the parameters and values associated with the selected node in the Carousels and Collections views.

A Log View displays errors and warnings as the carousel building and stream generation progresses.

Carousel Wizard

The Carousel Wizard makes the process of creating a single carousel easier. The carousel is added to the current session. The final step of the wizard allows a Transport Stream to be created using the information in the current session. Default parameters are provided at all stages of the wizard, but the user may change them either in the wizard screens or subsequently in the various Property views.

Features & Benefits

- Create Object Carousel Contents within an Output Transport Stream
- Select between MPEG-2 DSM-CC, DVB, DTT (MHEG-5), and MHP Standards
- Wizard to Help Guide through Steps in Stream Generation
- Built-in Multiplexer for Easy Video and Audio Insertion
- Variable Delivery Weightings to Optimize Carousel Load Times
- Generates All Required SI Tables for Terrestrial, Satellite, and Cable Applications
- Integrates with the Tektronix Carousel Analyzer for Load Time Optimization

- ASEAN / Australasia (65) 6356 3900
- Austria 00800 2255 4835*
- Balkans, Israel, South Africa and other ISE Countries +41 52 675 3777
- Belgium 00800 2255 4835*
- Brazil +55 (11) 3759 7627
- Canada 1 800 833 9200
- Central East Europe and the Baltics +41 52 675 3777
- Central Europe & Greece +41 52 675 3777
- Denmark +45 80 88 1401
- Finland +41 52 675 3777
- France 00800 2255 4835*
- Germany 00800 2255 4835*
- Hong Kong 400 820 5835
- India 000 800 650 1835
- Italy 00800 2255 4835*
- Japan 81 (3) 6714 3010
- Luxembourg +41 52 675 3777
- Mexico, Central/South America & Caribbean 52 (55) 56 04 50 90
- Middle East, Asia, and North Africa +41 52 675 3777
- The Netherlands 00800 2255 4835*
- Norway 800 16098
- People's Republic of China 400 820 5835
- Poland +41 52 675 3777
- Portugal 80 08 12370
- Republic of Korea 001 800 8255 2835
- Russia & CIS +7 (495) 7484900
- South Africa +41 52 675 3777
- Spain 00800 2255 4835*
- Sweden 00800 2255 4835*
- Switzerland 00800 2255 4835*
- Taiwan 886 (2) 2722 9622
- United Kingdom & Ireland 00800 2255 4835*
- USA 1 800 833 9200

* European toll-free number. If not accessible, call: +41 52 675 3777

Updated 10 February 2011

Standalone Software System Requirements (MTS4SA)

- PC with Genuine Intel Pentium class 1.2 GHz processor
- Intel or 100% compatible motherboard chipset
- Windows 2000 or Windows XP Operating System
- Internet Explorer 5.0 or above
- 256 MB of RAM
- 50 MB of available hard disk space for the application and documentation
- Additional space will be required for generated transport streams
- SVGA (800 × 600) resolution video adapter and monitor (XVGA (1024 × 768) or higher resolution recommended)
- CD-ROM or DVD drive
- Keyboard and Microsoft Mouse or compatible pointing device

Ordering Information

Carousel Generator

This application is available on MTS400 Series analyzer instruments, as MTS4SA standalone software, and on MTX/RTX Series generator instruments.

Additional Information

Please contact your local Service Manager for information regarding our products and services, or contact us at: www.tektronix.com/serviceandsupportcontactus



Product(s) are manufactured in ISO registered facilities.



Product(s) complies with IEEE Standard 488.1-1987, RS-232-C, and with Tektronix Standard Codes and Formats.

For Further Information. Tektronix maintains a comprehensive, constantly expanding collection of application notes, technical briefs and other resources to help engineers working on the cutting edge of technology. Please visit www.tektronix.com



Copyright © Tektronix, Inc. All rights reserved. Tektronix products are covered by U.S. and foreign patents, issued and pending. Information in this publication supersedes that in all previously published material. Specification and price change privileges reserved. TEKTRONIX and TEK are registered trademarks of Tektronix, Inc. All other trade names referenced are the service marks, trademarks, or registered trademarks of their respective companies.

07 Jun 2011

2AW-21203-1

