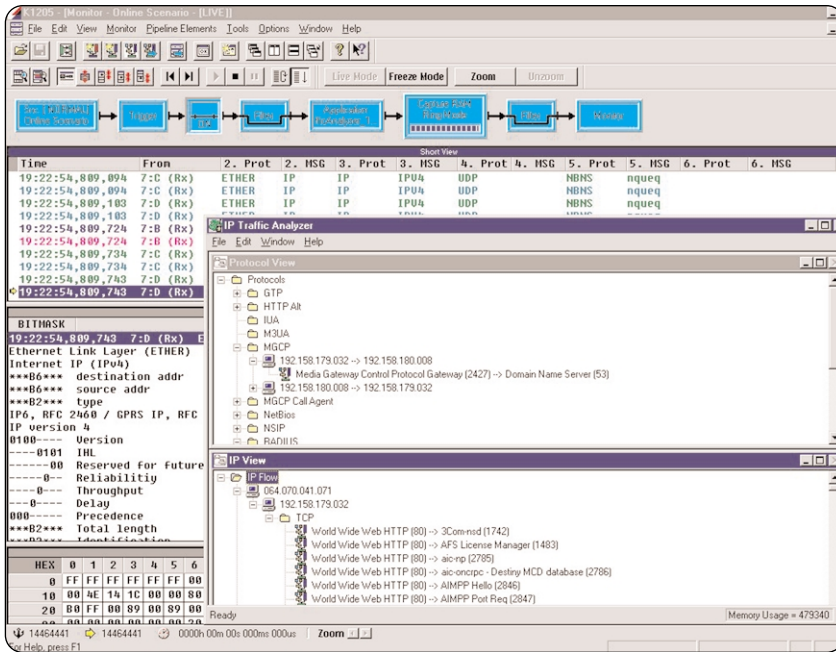


# K1297/K1205 Series Protocol Tester

## ► IP Software



## ► Features & Benefits

- Monitoring
  - Decode IP Related Protocols
  - IP Traffic Analyzer

- Simulation/Emulation
  - IP Emulation Capabilities are Realized in Packet Data Transport Package (see Transport, ISUP, IN Product Summary)

## ► Applications

- Internet Protocol (IP)
- Voice Over IP (VoIP)
- IP/SS7

Tektronix offers for K1297/K1205 Protocol Testers the following software packages for IP:

- Transport Packet Data (see Transport, ISUP, IN product summary)
- IP/SS7
- VoIP
- IP Applications

K1297/K1205 decodes all needed protocols in the interface between SG (Signaling Gateway) and MGC (Media Gateway Controller), i.e. IP/SS7 (M3UA/SCTP). For UMTS the same functionality is needed and supported for the lu-PS and the lur Interface. The interface between MGC and MG (Media Gateway) and also H.323 is decodable (VoIP package). Higher layer applications like HTTP, Radius, Telnet, etc. are also supported. For the K1297-G20, we are offering IP, TCP and UDP emulations as a basis for further developments (see Transport, ISUP, IN product summary). Intelligent data reduction is possible through IP address filtering (Berkeley Filter configurable via LL setup) already on the Ethernet board.

## Examples for Test Solutions

Test Solution	Ordering Numbers*1
IP Application	7PK12xx-6JJ
	7PK12xx-6TP
IPS7 IN	7PK12xx-xCJ
	7PK12xx-xTC
	7PK12xx-xTN
	7PK12xx-xJS
	7PK12xx-xTP
IPS7	7PK1221-xCS
	7PK1221-xTC
	7PK1221-xTN
	7PK12xx-xJS
	7PK12xx-xTP

\*1 For x insert relevant code: 05 for K1205, 21 for K1297-G20 application, 6 for monitoring, 7 for simulation/emulation.

# K1297/K1205 Series Protocol Tester

## ► IP Software

### ► Ordering Information

Please refer to the K1297/K1205 Protocol Tester Hardware, K1205 Base Software and K1297-G20 Base Software for further information.

Please note that besides the following ordering numbers (for complete version), upgrades and offline software are available.

#### IP Monitoring Protocol Packages for K1205

**7PK1205-6JJ11** – K1205 Protocol SW Mon IP Applications Package; incl. NBSS, NBDG, NBNS, NFS, DNS, SMNP, Telnet, FTP, Radius, MIP, IKE and others; Prerequisite: Current System Version (7KK1205-6ABxx) and 7PK1205-6TP11.

**7PK1205-6JS11** – K1205 Protocol SW Mon IPS7 Package; incl. M3UA, SCTP, TALI, MTP-Adapt; Prerequisite: Current System Version (7KK1205-6ABxx) and 7PK1205-6TP11.

**7PK1205-6JV11** – K1205 Protocol SW Mon VoIP Package; incl. MGCP, SIP, RTP, RTCP; Prerequisite: Current System Version (7KK1205-6ABxx) and 7PK1205-6TP11.

**7PK1205-6TP11** – K1205 Protocol SW Mon Transport Packet Data Package; incl. X.25, LAP B, FR, IPv4, IPv6, ARP/RARP, EGP, RIP, TCP&UDP, ICMP, IEEE802.3 MAC; GPRS G<sub>i</sub>; Prerequisite: Current System Version (7KK1205-6ABxx).

#### IP Monitoring Protocol Packages for K1297-G20

**7PK1221-6JJ11** – K1297-G20 Protocol SW Mon IP Applications Package; incl. NBSS, NBDG, NBNS, NFS, DNS, SMNP, Telnet, FTP, Radius, MIP, IKE and others; Prerequisite: Current System Version (7KK1220-OSCxx) and 7PK1221-6/7TP11.

**7PK1221-6JS11** – K1297-G20 Protocol SW Mon IPS7 Package; incl. M3UA, SCTP, TALI, MTP-Adapt; Prerequisite: Current System Version (7KK1220-OSCxx) and 7PK1221-6/7TP11.

**7PK1221-6JV11** – K1297-G20 Protocol SW Mon VoIP Package; incl. MGCP, SIP, RTP, RTCP; Prerequisite: Current System Version (7KK1220-OSCxx) and 7PK1221-6/7TP11.

**7PK1221-6TP11** – K1297-G20 Protocol SW Mon Transport Packet Data Package; incl. X.25, LAP B, FR, IPv4, IPv6, ARP/RARP, EGP, RIP, TCP&UDP, ICMP, IEEE802.3 MAC; GPRS G<sub>i</sub>; Prerequisite: Current System Version (7KK1220-OSCxx) and Ethernet or ATM board.

#### IP Monitoring/Simulation/Emulation Protocol Packages for K1297-G20

**7PK1221-7JS11** – K1297-G20 Protocol SW Mon/Sim/Emu IPS7 Package; M3UA, SCTP; Prerequisite: Current System Version (7KK1220-OSCxx) and 7PK1221-7TP11.

**7PK1221-7TP11** – K1297-G20 Protocol SW Mon/Sim/Emu Transport Packet Data Package; incl. X.25, LAP B, FR, IPv4, ARP/RARP, TCP&UDP, ICMP, IEEE802.3 MAC; Prerequisite: Current System Version (7KK1220-OSCxx) and Ethernet, ATM or PRIME board.

#### Contact Tektronix:

**ASEAN Countries & Pakistan** (65) 6356 3900

**Australia & New Zealand** (65) 6356 3900

**Austria** +43 2236 8092 262

**Belgium** +32 (2) 715 89 70

**Brazil & South America** 55 (11) 3741-8360

**Canada** 1 (800) 661-5625

**Central Europe & Greece** +43 2236 8092 301

**Denmark** +45 44 850 700

**Finland** +358 (9) 4783 400

**France & North Africa** +33 (0) 1 69 86 80 34

**Germany** +49 (221) 94 77 400

**Hong Kong** (852) 2585-6688

**India** (91) 80-2275577

**Italy** +39 (02) 25086 1

**Japan** (Sony/Tektronix Corporation) 81 (3) 3448-3111

**Mexico, Central America & Caribbean** 52 (55) 56666-333

**The Netherlands** +31 (0) 23 569 5555

**Norway** +47 22 07 07 00

**People's Republic of China** 86 (10) 6235 1230

**Poland** +48 (0) 22 521 53 40

**Republic of Korea** 82 (2) 528-5299

**Russia, CIS & The Baltics** +358 (9) 4783 400

**South Africa** +27 11 254 8360

**Spain** +34 (91) 372 6055

**Sweden** +46 8 477 6503/4

**Taiwan** 886 (2) 2722-9622

**United Kingdom & Eire** +44 (0) 1344 392400

**USA** 1 (800) 426-2200

For other areas contact Tektronix, Inc. at: 1 (503) 627-7111

Updated 8 February 2002



For the most up-to-date product information visit our web site at [www.tektronix.com](http://www.tektronix.com)

Copyright © 2002, Tektronix, Inc. All rights reserved. Tektronix products are covered by U.S. and foreign patents, issued and pending. Information in this publication supersedes that in all previously published material. Specification and price change privileges reserved. TEKTRONIX and TEK are registered trademarks of Tektronix, Inc. All other trade names referenced are the service marks, trademarks or registered trademarks of their respective companies.

03/02 HB/XBS

2FW-15355-0