

2 Series MSO

Mixed Signal Oscilloscope Datasheet



Overview

The 2 Series MSO features up to 4 analog channels, 500 MHz bandwidth, 2.5 GS/s sample rate, 16 channel MSO, 50 MHz AFG, 4-bit digital pattern generator, advanced triggers, and protocol decode, all in a compact form factor about 1.5" thick. The 2 Series MSO is the go-to oscilloscope for electronic debug and test, no matter where you work.

With a capacitive touchscreen and a highly intuitive user interface truly designed for touch, the 2 Series MSO is a member of the Tektronix family of award-winning next generation oscilloscopes. The shared user interface and the programmatic interface makes it easy to use any Tektronix next generation oscilloscope

The optional battery pack extends the instrument capabilities by enabling the same instrument that is used in the lab to also be used in the field.

A large catalog of compatible probes and well-rounded set of accessories make the 2 Series MSO the most capable and versatile instrument in its class and suitable for a variety of applications.

The 2 Series MSO-EDU is also available in a bundled version for educators. It includes the oscilloscope, serial trigger and decode, digital inputs, arbitrary function generator, and five year warranty.

Key performance specifications

Analog input channels

2 or 4 inputs

Bandwidth

70 MHz, 100 MHz, 200 MHz, 350 MHz, 500 MHz

Sample rate

- 2.5 GS/s half channels
- 1.25 GS/s all channels

Waveform capture rate

>4,000,000 wfms/s

Record length

10 M points per channel

Vertical resolution

- 8 bits ADC
- Up to 16 bits in high-resolution mode

Standard trigger types

Edge, pulse width, runt, timeout, logic, setup & hold, rise/fall time, and parallel bus

Standard analysis

- Cursors: Waveform, V bars, H bars, and V&H bars
- Measurements: 37
- Plots: XY
- Mask/Limit testing
- Math: Basic waveform arithmetic, FFT, and advanced equation editor
- Search: Search on any trigger criteria

Serial trigger, decode and analysis

- I²C, SPI, RS-232/422/485/UART, CAN, CAN FD, CAN XL, LIN, Automotive Ethernet 10BASE-T1S, and SENT
- Optional for MSO22 and MSO24
- Standard for MSO22-EDU and MSO24-EDU

2 Series MSO Mixed Signal Oscilloscope Datasheet

Digital input channels

- 16 inputs
- Optional for MSO22 and MSO24
- Standard for MSO22-EDU and MSO24-EDU

Arbitrary function generator

- 50 MHz waveform generation
- Waveform types: Arbitrary, sine, square, pulse, ramp, triangle, DC level, gaussian, lorentz, exponential rise/fall, sin(x)/x, random noise, haversine, and cardiac
- Optional for MSO22 and MSO24
- Standard for MSO22-EDU and MSO24-EDU

Digital pattern generator

- 4 bit
- User defined, manual, and toggle
- Optional for MSO22 and MSO24
- Standard for MSO22-EDU and MSO24-EDU

Display

- 10.1-inch TFT color
- WXGA (1280 x 800) resolution
- Capacitive (multi-touch) touchscreen

Connectivity

- USB 2.0 Device (one port)
- USB 2.0 Host (dual-port)
- LAN (10/100 MB/s Base-T Ethernet)

Battery pack

- Battery pack with two battery slots and hot-swap capability
- Typical usage eight hours with dual batteries
- Optional accessory

Remote control

Remotely view and control the oscilloscope over a network connection through remote Virtual Network Computing (VNC).

VESA mount

100 mm x 100 mm VESA interface

Security

- Kensington lock, T-Bar style
- Software: Security options for connectivity

Standard probes

- One TPP0200 200 MHz, 10:1 voltage probe per channel
- One P6316 logic probe (MSO22-EDU and MSO24-EDU only)

Collaborative tools (optional)

- TekDrive: Save and recall waveforms, setups, and screenshots from TekDrive cloud. Share data with other members on the team.
- TekScope: Perform basic instrument control and transfer waveform data to PC. Offline analysis such as protocol decode, automated measurements, etc on saved data.

Optional Accessories

- Protective case bundle: Carrying bag, kick stand, protective rubber case
- Rackmount kit
- Hard case
- Battery charger

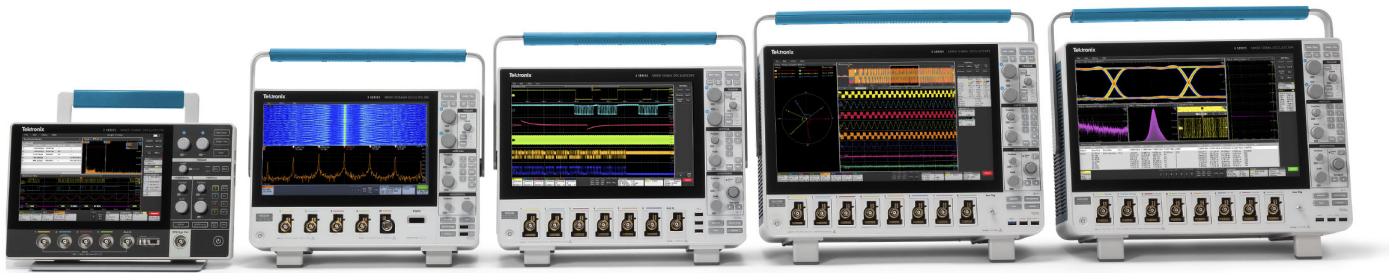
Warranty

- MSO22 and MSO24; one year standard
- MSO22-EDU and MSO24-EDU; five year total protection

Awards



Tektronix Next Generation Oscilloscopes



2 Series MSO	3 Series MD0	4 Series B MSO	5 Series B MSO	6 Series B MSO
Compact, portable, battery-operated instrument	Extreme versatility for any bench	Up to 6 channels of high-visibility bench test	Advanced analysis and up to 8 inputs	Unmatched detail on high-speed signals

Intuitive touchscreen with simplified front panel

The 2 Series MSO offers the same, award-winning user interface as the higher end Tektronix oscilloscopes and supports the touch interactions that you have come to expect in a touch-enabled consumer device.

- Drag waveforms left/right or up/down to adjust horizontal and vertical position or to pan a zoomed view
- Pinch and expand to change scale or zoom in/out in either horizontal or vertical directions
- Swipe in from the right to reveal the results bar or down from the top to access the menus in the upper left corner of the display



2 Series MSO Mixed Signal Oscilloscope Datasheet

The simplified front panel retains critical buttons and knobs with color-coded LED ring lights allowing quick access and easy adjustment of the most frequently-used instrument settings.

The membrane switch technology makes it rugged and suitable for use in harsh environments and easy to clean.



The combination of a streamlined front panel with an intuitive touch interface makes it easy for any new engineer to self-discover and begin using the instrument.

A USB mouse and a keyboard is also supported and can be used as a third interaction method with the instrument.

Simultaneously view analog channels, decoded serial bus waveform, results table, measurement results, math FFT plot, and cursor readouts along with the setup information for each input with the highly customizable user interface.



Exceptionally easy to use interface with comprehensive analysis for fast insight

The user interface on the 2 Series MSO is designed from the ground up for touch operation. All the key information is presented as a series of badges with visual cues to show association. Get immediate access to instrument configuration or waveform management tasks with a single tap.

The 2 Series MSO offers a revolutionary new stacked display mode in this class. Traditionally all the waveforms were overlaid on a single graticule leading to unwanted tradeoffs.

- Vertical scale and position of each waveform needs to be adjusted so that they do not overlap, resulting in usage of only a small percentage of the ADC range leading to inaccurate measurements.
- Adjusting the waveform vertical scale and position leads to overlap, making it difficult to distinguish details on an individual waveform.

In the stacked display mode, each waveform gets its own slice (additional graticule) representing the full ADC range to enable maximum visibility and accuracy. Groups of channels can also be overlaid to enable visual comparison of signals.

The 2 Series MSO offers a comprehensive set of standard analysis tools including:

- Waveform and screen-based cursors with user-selectable readout location.
- 37 automated measurements with measurement statistics and gating, the ability to add an unlimited number of measurements, navigate from one occurrence to the next, and immediate viewing of the minimum or maximum result.
- Basic and advanced waveform math including arbitrary equation editing.
- Basic FFT analysis with options to view magnitude or phase, multiple options to customize window type, gating, and units. Works simultaneously across all analog channels.

The large display in the 2 Series MSO provides plenty of viewing area not only for signals, but also for plots, measurement results tables, bus decode tables, and more. You can easily resize and relocate the various views to suit your needs.

Triggering

Discovering a device fault is only the first step. Next, you must capture the event of interest to identify root cause. The 2 Series MSO provides a complete set of advanced triggers, including runt, logic, pulse width, triggers, timeout, rise/fall time, setup and hold, serial packet, and parallel data that can be used to capture complex infrequent events.

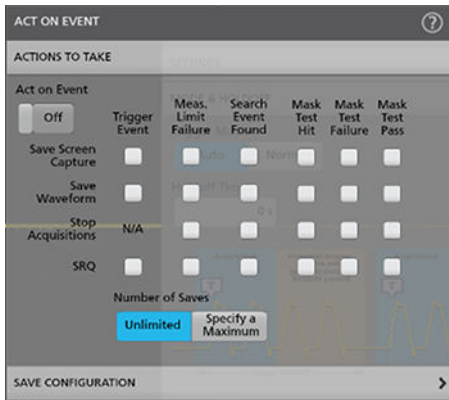
Configuration menus are accessed by simply double tapping on the item of interest. In this case trigger badge was tapped to open trigger menu.



Act on event

Act on event capability built into the instrument enables users to setup the oscilloscope to respond by performing certain actions when a specified condition such as trigger event, measurement limit failure, search event or mask test events occur. This enables easy capture and analysis of rarely occurring events.

An oscilloscope can be automated using the Act on event feature when a certain event occurs.



Navigation and search

With up to 10 M point record length, you can capture many events of interest, even thousands of serial packets in a single acquisition, while maintaining high resolution to zoom in on fine signal details.

Finding events of interest in a long waveform record can be time consuming without the right search tools.

The search feature allows you to automatically search through your acquisition for user-defined events. All occurrences of the event are highlighted with search marks for easy navigation. Search types include edge, pulse width, timeout, runt, window,

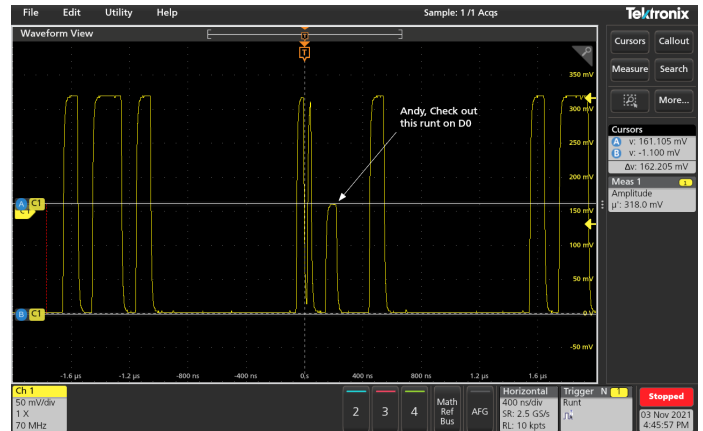
logic, setup and hold, rise/fall time, and parallel/serial bus packet content. You can also quickly jump to the minimum and maximum value of search results.

Callouts

Documenting test results and methods are critical when sharing data across a team, recreating a measurement later or delivering a customer report.

With a few taps on the screen, you can create as many custom callouts as needed, enabling you to document the specific details on the waveforms. With each callout, you can customize the text, location, color, font size, and font.

The following image is an example of pulse width trigger used to trigger on a narrow pulse.



A bus waveform provides time-correlated decoded packets while the bus decode table presents all the packets from the entire acquisition; search can be used to navigate.



Mask testing

Mask testing offers a good way to test the quality of a signal. A mask defines a portion of the oscilloscope display that a signal must not enter. A mask can be defined either based on a golden signal with user defined tolerances or drawing mask segments on the screen.

The 2 Series MSO provides a comprehensive set of mask tools that allow:

- Defining test duration in number of waveforms
- Setting a violation threshold that must be met before considering a test failure
- Counting violations/failures and reporting statistical information
- Setting actions upon violations, test failure, and test complete

The following image is a limit mask test based on golden reference signal.



Serial protocol triggering and analysis

Serial protocol triggering and analysis is optional for the MSO22 and MSO24 and comes standard with the MSO22-EDU and MSO24-EDU.

The 2 Series MSO offers a robust set of tools for working with the most common serial buses found in embedded design including I²C, SPI, RS-232/422/485/UART, CAN, CAN FD, CAN XL, LIN, Automotive Ethernet 10BASE-T1S, and SENT.

The protocol decode and triggering capability is invaluable to trace the flow of activity through a system by observing the traffic on one or more serial buses.

- Serial protocol triggering lets you trigger on specific packet content including start of packet, specific addresses, specific data content, unique identifiers, and errors.
- Bus waveforms provide a higher-level, combined view of the individual signals of your bus such as; clock, data, and chip enable. This makes it easy to identify where packets begin and end, and identifying sub-packet components such as; address, data, identifier, and CRC.
- The bus waveform is time-aligned with all other displayed signals, making it easy to measure timing relationships across various parts of the system under test.
- The bus decode table provides a tabular view of all decoded packets in an acquisition. Packets are timestamped and listed consecutively with columns for each component like address and data.

The Bus menu provides options to configure the bus parameters.



Digital channels

Digital channels are optional for the MSO22 and MSO24 and come standard with the MSO22-EDU and MSO24-EDU.

A P6316 digital probe can be used to connect up to 16 signals to the digital inputs of the oscilloscope. The accessories that are included with the probe enable you to connect directly to 8x2 square pin headers. The included flying lead sets and grabbers can be used to clip into surface mount devices or test points offering additional flexibility.

Each digital channel can be viewed separately to see its state. Alternately, several digital channels can be grouped to view them in a bus form. Symbol tables can also be applied to the bus view to get a higher level view of the bus transactions. Pattern triggering capability can be used to trigger on a pattern of interest.

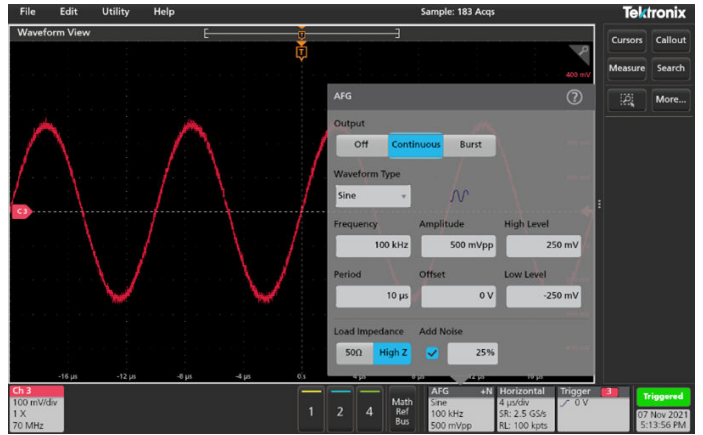
The following image shows digital channel trigger and decode.



Several predefined waveforms including sine, square, pulse, ramp/triangle, DC, noise, sin(x)/x (Sinc), gaussian, lorentz, exponential rise/fall, Haversine, and cardiac are included.

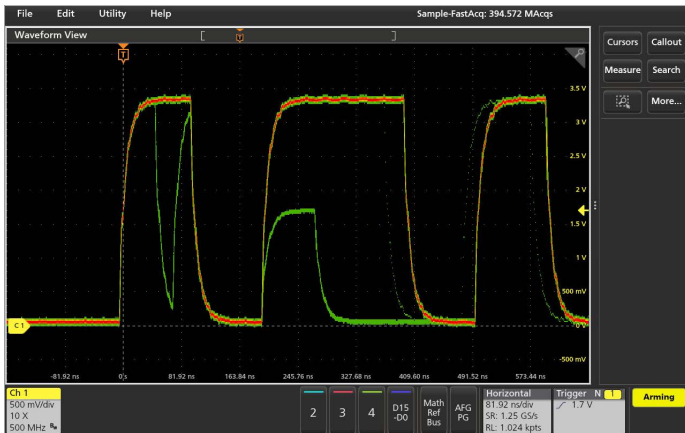
The arbitrary waveform generator provides 128k points of record for loading waveforms captured on the analog input, a saved file. Alternatively Tektronix ArbExpress PC-based waveform creation and editing software can be used to create complex waveforms quickly and easily.

The following image shows flexible settings of AFG outputs. In this test case, 25% of noise was added to the Sine.



Digital Phosphor technology with FastAcq™ high-speed waveform capture

To debug a design problem, first you must know it exists. Digital phosphor technology with FastAcq provides you with fast insight into the real operation of your device. Its fast waveform capture rate - greater than 4,000,000 waveforms per second - gives you a high probability of seeing the infrequent problems common in digital systems: runt pulses, glitches, timing issues, and more. To further enhance the visibility of rarely occurring events, intensity grading indicates how often rare transients are occurring relative to normal signal characteristics.



Bode plot

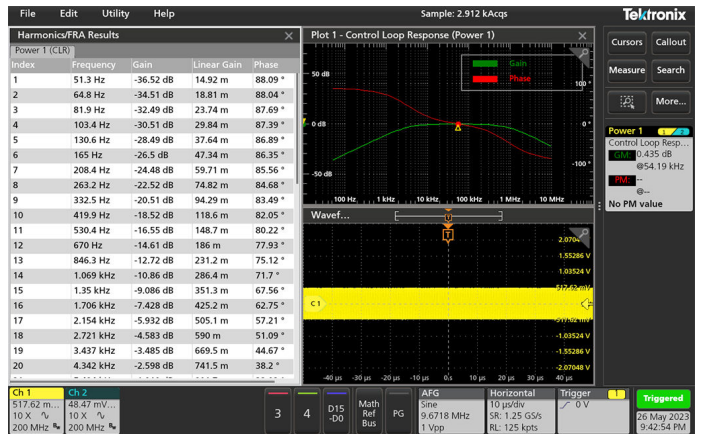
Bode plot is optional for the MSO22 and MSO24 and comes standard with the MSO22-EDU and MSO24-EDU.

Analyze the frequency response of a system using the built-in Bode plot feature. The input voltage is swept across the user-selected range using the internal AFG or a supported external AFG. The gain and phase of the output relative to the input voltage is plotted at each point.

Arbitrary function generator

Arbitrary function generator is optional for the MSO22 and MSO24 and comes standard with the MSO22-EDU and MSO24-EDU.

The 2 Series MSO includes an optional 50 MHz arbitrary function generator for simulating sensor signals within a design or adding noise to signals to perform margin testing. The AFG output is multiplexed with the Aux out signal.

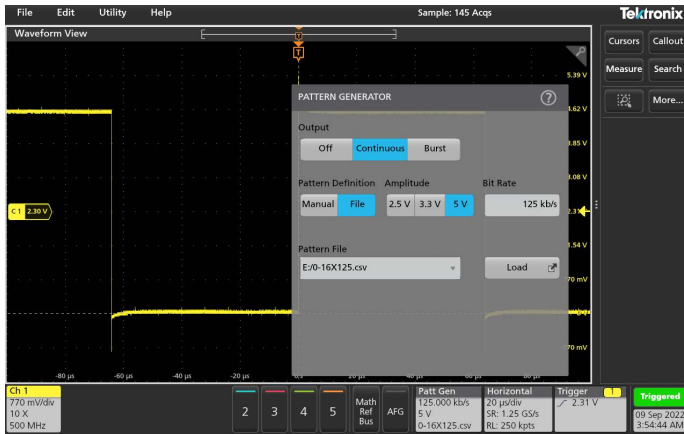


Digital pattern generator

Digital pattern generator is optional for the MSO22 and MSO24 and comes standard with the MSO22-EDU and MSO24-EDU.

A 4-bit digital pattern generator with 4k point record length per bit is included on the 2 Series MSO for generating 4 digital signals at predefined voltage levels.

An output pattern can be loaded in memory using a predefined CSV file or the state of each output can be manually set to high, low, toggle, or Hi-Z as needed.



Connectivity

The 2 Series MSO contains several ports that you can use to connect the instrument to a network, directly to a PC, or to other test equipment.

- Two USB 2.0 ports enable easy transfer of screenshots, instrument settings, and waveform data to a USB mass storage device. A USB mouse and keyboard can also be attached to USB host ports for instrument control and data entry.
- The USB device port allows you to control the oscilloscope remotely from a PC.
- The standard 10/100BASE-T ethernet port enables easy connection to networks, and remotely controlling the instrument and viewing the acquired data.

Programmable interface and backward compatibility

Programmable interface commands can be used to remotely control the instrument through the USB device port or the ethernet port. This enables programming the instrument to perform an automated set of tasks or integrating into a larger system that includes other equipment for performing specific tasks.

The programmable interface command set is compatible with the next generation of Tektronix oscilloscopes making it easy to reuse code written for other Tektronix oscilloscopes.

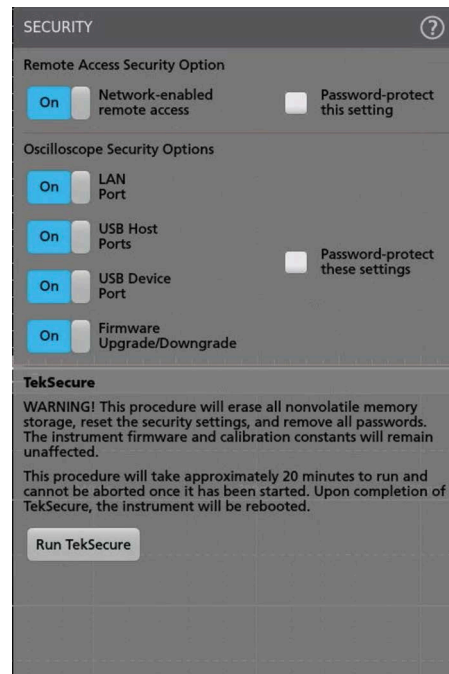
The instrument also supports a compatibility mode that, when enabled, makes the 2 Series MSO compatible with the programmatic commands of the legacy TDS2000, TBS1000, and MSO/DPO2000 family of Tektronix oscilloscopes. This compatibility mode makes it easy to replace an older model oscilloscope in an existing test system with the 2 Series MSO.

Enhanced security

Hardware security includes a Kensington lock (T-Bar style) to prevent theft of the oscilloscope.

The 2 Series MSO provides you with the option to protect company data through the Security menu. This includes the option to restrict access to the instrument by password-protecting remote network access, I/O ports, and firmware updates to ensure the security of the data. By default, the oscilloscope disables remote access on initial use and gives you the option to enable remote access with or without a password.

To clear user data, run TekSecure from the menu.



Battery pack (optional)

Battery pack with two battery slots can be mounted on the back of the instrument.



The 2 Series MSO also supports an optional battery pack that provides additional flexibility to perform measurements in areas where there is no AC power available such as testing equipment in the field.

The battery pack has two battery slots and can support hot swapping of the batteries during operation to extend run time on batteries.

The batteries are charged when the instrument is on AC power, or using an external charger.



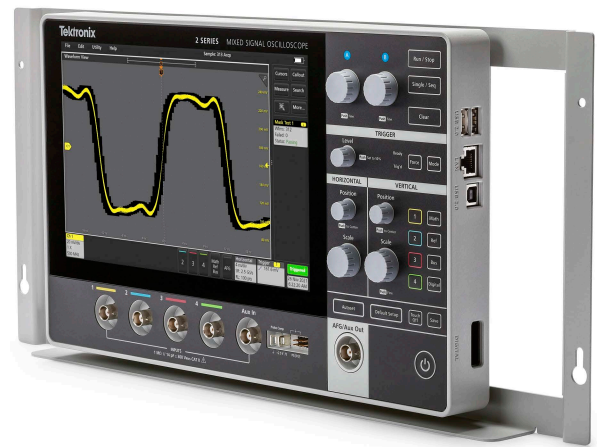
Accessories

In addition to the battery pack, several other accessories are available for the 2 Series MSO:

- Install the instrument in a rack for production with the rackmount kit.
- Carry the instrument into the field using the protective case bundle. The bundle includes a carrying bag, protective rubber case, and kick stand.
- Ship the instrument using the hard travel case.

The 100 mm x 100 mm standard VESA interface on the back of the instrument is compatible with a wide variety of accessories.

The following images show the MSO24 mounted on an off the shelf arm, the rackmount kit, the hard carrying case, and the bundle with carrying bag, kick stand, and protective case.



2 Series MSO Mixed Signal Oscilloscope Datasheet



TekDrive

The 2 Series MSO is natively integrated with TekDrive collaborative test and measurement data workspace that allows users to upload, store, organize, search, download, and share any file type from any connected device.

- Seamlessly access your data anywhere
- Save/recall directly on instruments
- Inspect, analyze, and report saved data on any device using a browser
- Collaborate seamless with other contributors
- Integrate into any workflow with scripting using REST API



Kickstart

The 2 Series MSO is compatible with Kickstart Software. Kickstart is a PC-based application that enables setup and data collection across many types of bench instruments. It also offers a set of tools for quick and easy interaction and analysis of data.

- Connect and control up to 8 instruments simultaneously
- Supports SMU, DMM, power supplies, oscilloscopes, AFG, data loggers, and sensitive instruments
- Automate data collection
- Save and replicate test configurations
- Plot collected data for a visual inspection of trends
- Export data in different formats

TekScope PC analysis software

Get the analysis capability of an award-winning oscilloscope on your PC. Analyze waveforms anywhere, anytime.

- Analyze waveforms anywhere without an oscilloscope using the same UI as the oscilloscope
- Share data with colleagues and customers
- Synchronize waveforms from multiple oscilloscopes on the same screen
- Add advanced analysis capabilities such as spectrum analysis, jitter analysis, and advanced bus decoding



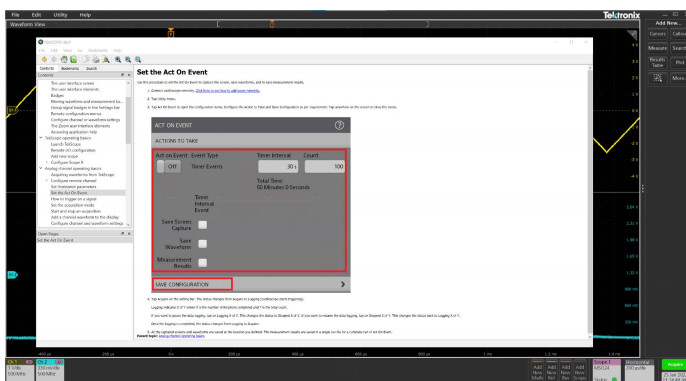
Education features

Help when you need it where you need it

The 2 Series MSO includes several helpful resources to get your questions answered rapidly without having to find a manual or go to a website:

- Graphical images and explanatory text are used in numerous menus to provide quick feature overviews.
- All menus include a question mark icon in the upper right that takes you directly to the portion of the integrated help system that applies to that menu.
- The Getting acquainted with your instrument section in the Help menu enables you to quickly come up to speed with the instrument in a few minutes.

The integrated help answers your questions rapidly without having to find a manual or go to the internet.



Feature control

The 2 Series MSO offers new ways to enable educators to devote more time to teaching circuit concepts instead of lab setup and management.

Educators can disable autoset, cursors, and automated measurements on the instruments. This allows students to focus on the basic concepts and helps them understand how to use the horizontal and vertical controls to get the waveform display, use the graticule to measure time and voltage, and manually plot/calculate the signal characteristics.

Get it all for one low price

The 2 Series MSO-EDU is available in a bundled version for educators. It includes the oscilloscope with all its valuable base features and all the extras: serial trigger and decode, digital inputs, arbitrary function generator, and a five year warranty. Available in two and four channel models and 70 MHz, 100 MHz, and 200 MHz bandwidths.

Specifications

All specifications are typical unless noted otherwise. All specifications apply to all models unless noted otherwise.

Model overview

Specification	MS022	MS024	MS022-EDU	MS024-EDU
Analog channels	2	4	2	4
Analog channel bandwidth	70 MHz, 100 MHz, 200 MHz, 350 MHz, and 500 MHz		70 MHz, 100 MHz, and 200 MHz	
	500 MHz bandwidth guaranteed from 4 mV/div to 10 V/div.			
Sample rate	1.25 GS/s All channel, 2.5 GS/s half channels Interleaved			
Record length	10 M			
Waveform Capture Rate, typical	>4,000,000 wfms/s			
Digital channels	16			
AFG outputs	1 (multiplexed with Aux Out)			

Processor system

Operating system

Closed Linux

Internal storage

100 MB of usable eMMC space

Vertical system analog channels

Bandwidth limits (limited by instrument bw)

20 MHz, 70 MHz, 100 MHz, 200 MHz, 350 MHz, and 500 MHz

Calculated rise time, typical

Calculated rise time (10% to 90%, in ps) equals $0.35/BW$ except from 1000 to 2100 mentioned in the following table.

Bandwidth	Rise time (ps)
500 MHz	1000
350 MHz	1400
200 MHz	2100
100 MHz	3500
70 MHz	5000

Input coupling

AC, DC

Input impedance

- BNC: $1\text{ M}\Omega \pm 1\%$, $14\text{ pF} \pm 3\text{ pF}$
- TPP0200 probe tip: $10\text{ M}\Omega$, $< 12\text{ pF}$
- P6139B probe tip: $10\text{ M}\Omega$, $< 8\text{ pF}$

Input sensitivity range

1 mV/div to 10 V/div

Vertical resolution

8 Bit

Maximum input voltage

- $300\text{ V}_{\text{rms}}$ CAT II with peaks $< \pm 425\text{ V}$
- Derate at 20 dB/decade between 3 MHz to 30 MHz
- Derate at 15.5 dB between 30 MHz to 300 MHz; above 300 MHz, 5 V_{rms}

DC gain accuracy

- Guaranteed for 2 mV/div and above, typical otherwise. Specification is valid after 30 minute warm-up and Signal Path Compensation (SPC) at ambient.
- $< 2\text{ mV/div}$: $\pm 3.0\%$, typical, derated at $0.100\%/^{\circ}\text{C}$ above $30\text{ }^{\circ}\text{C}$
- $\geq 2\text{ mV/div}$: $\pm 2.0\%$, derated at $0.100\%/^{\circ}\text{C}$ above $30\text{ }^{\circ}\text{C}$

Crosstalk

100:1 \leq 100 MHz, 30:1 $>$ 100 MHz

Offset range

- 1 mV/div to 63.8 mV/div : $\pm 1\text{ V}$
- 63.9 mV/div to 999.5 mV/div : $\pm 10\text{ V}$
- 1 V/div to 10 V/div : $\pm 100\text{ V}$

Vertical system digital channels

Input Channels

16 [D0:D15]

Thresholds

Thresholds per set of 8 channels

Threshold Selections

TTL, CMOS, ECL, PECL, User-Defined

User Defined Range

-15 V to +25 V

Minimum detectable pulse

5 ns

Threshold Accuracy

± 180 mV + 2 % of threshold setting

Minimum Input Signal Swing

500 mVp-p

Maximum Input Signal Swing

+30 V, -20 V

Input Impedance

100 k Ω || 8 pF

Vertical Resolution

1 bit

Horizontal system analog channels

Timebase range

- 2 ns/div to 1000 s/div (all channel)
- 1 ns/div to 1000 s/div (half channel)

Timebase delay range

-10 divisions to 5000s

Channel to channel deskew range

-95 ns to +95 ns

Timebase accuracy

± 25 ppm over any ≥ 1 ms interval

Guaranteed, specification valid after 30 minute warm-up and Signal Path Compensation (SPC) at ambient.

Trigger system

Trigger modes

Auto, normal, and single

Trigger coupling

DC, HF Reject (attenuates > 50 kHz), LF Reject (attenuates < 50 kHz), noise reject (reduces sensitivity)

Trigger holdoff range

0 s to 10 s

Trigger sensitivity

- Edge type, DC coupled
- Any analog input channel: the greater of 6 mV or 0.8 div
- Aux In: 500 mVpp to 250 MHz

Trigger level ranges

- Any input channel: ± 5 divisions from center of screen
- Aux In: ± 8 V

Trigger types

- Edge: Positive, negative, or either slope on any channel.
- Pulse Width: Trigger on width of positive or negative pulses. Event can be time- or logic-qualified.
- Timeout: Trigger on an event which remains high, low, or either, for a specified time period. Event can be logic-qualified.
- Runt: Trigger on a pulse that crosses one threshold but fails to cross a second threshold before crossing the first again. Event can be time- or logic-qualified.
- Logic: Trigger when logic pattern goes true, goes false, or occurs coincident with a clock edge. Pattern (AND, OR, NAND, NOR) specified for all input channels defined as high, low, or don't care. Logic pattern going true can be time-qualified.
- Setup/Hold: Trigger on violations of both setup time and hold time between clock and data present on any input channels.
- Rise/Fall: Trigger on pulse edge rates that are faster or slower than specified. Slope may be positive, negative, or either. Event can be logic-qualified.
- Parallel (with MSO option): Trigger on a parallel bus data value. Parallel bus can be from 1 to 20 bits (from the digital and analog channels) in size. Supports binary and hex radices.
- I2C (option): Trigger on start, repeated start, stop, missing ack, address (7 or 10 bit), data, or address and data on I2C buses up to 10 Mb/s.
- SPI (option): Trigger on slave select, idle time, or data (1-16 words) on SPI buses up to 20 Mb/s.
- RS-232/422/485/UART (option): Trigger on start bit, end of packet, data, and parity error up to 15 Mb/s.
- CAN (option): Trigger on start of frame, type of frame (data, remote, error, or overload), identifier, data, identifier and data, end of frame, missing ack, and bit stuff error on CAN buses up to 1 Mb/s, on CAN FD buses up to 16 Mb/s and on CAN XL buses up to 20 Mb/s.
- LIN (option): Trigger on sync, identifier, data, identifier and data, wakeup frame, sleep frame, and error on lin buses up to 1 Mb/s.
- SENT (option): Trigger on start of packet, fast channel status and data, slow channel message ID and data, and CRC errors.
- Automotive Ethernet 10BASE-T1S (option): Trigger on SyncCommit, Start of Stream Delimiter, Preamble, Beacon, End of Stream Delimiter, or Errors.

Acquisition system modes

Sample

Acquired sample values

Peak Detect

Highest and the lowest sample within the decimation interval

Averaging

Average of a series of acquired waveforms up to 10,240 acquisitions

Envelope

Min-Max envelope over multiple acquisitions

FastAcq

FastAcq optimizes the instrument for the analysis of dynamic signals and capture of infrequent events by capturing >4,000,000 wfms/s.

2 Series MSO Mixed Signal Oscilloscope Datasheet

Hi-Res

Applies a unique bandwidth filter for each sample rate that maintains the maximum bandwidth possible for that sample rate while preventing aliasing and removing noise from the oscilloscope amplifiers and ADC above the usable bandwidth for the selected sample rate.

Roll Mode

Scrolls sequential waveform points across the display in a right-to-left rolling motion, at timebase speeds of 40 ms/div and slower, when in Auto trigger mode.

Waveform measurements

Cursors

Waveform, V bars, H bars, and V&H bars

Automatic measurements

37, of which an unlimited number can be displayed as either individual measurement badges or collectively in a measurement results table

Amplitude measurements

Amplitude, maximum, minimum, peak-to-peak, positive overshoot, negative overshoot, mean, RMS, AC RMS, top, base, and area

Time measurements

Period, frequency, unit interval, data rate, positive pulse width, negative pulse width, skew, delay, rise time, fall time, phase, rising slew rate, falling slew rate, burst width, positive duty cycle, negative duty cycle, time outside level, setup time, hold time, duration n-periods, high time, and low time, time to max, and time to min

Measurement statistics

Mean, standard deviation, maximum, minimum, and population. Statistics are available on both the current acquisition and all acquisitions

Reference levels

User-definable reference levels for automatic measurements can be specified in either percent or units. Reference levels can be set to global for all measurements, per source channel or signal, or unique for each measurement

Gating

Screen, cursors, logic, search, or time. specifies the region of an acquisition in which to take measurements. Gating can be set to global (affects all measurements set to global) or local (all measurements can have a unique time gate setting; only one local gate is available for screen, cursors, logic, and search actions).

Waveform math

Number of math waveforms

Unlimited

Arithmetic

Add, subtract, multiply, and divide

Math Functions

Integrate, differentiate, log 10, log e, square root, exponential, and abs

2 Series MSO Mixed Signal Oscilloscope Datasheet

Relational

Boolean result of comparison >, <, ≥, ≤, =, and ≠

Logic

AND, OR, NAND, NOR, XOR, and EQV

FFT

Spectral magnitude and phase, and real and imaginary spectra

FFT units

Magnitude: linear and log (dBm)

Phase: degrees, radians, and group delay

FFT window functions

Hanning, rectangular, hamming, blackman-harris, flattop2, gaussian, kaiser-bessel, and tekexp

Search

Search Types

Search through long records to find all occurrences of user specified criteria including edges, pulse widths, timeouts, runt pulses, logic patterns, setup & hold violations, rise/fall times, and bus protocol events.

Search results

Waveform view, results table.

Arbitrary function generator

Number of channels

1 (Multiplexed with Aux Out)

Operating modes

Continuous, burst

Waveforms

Sine, square, pulse, ramp, triangle, dc, noise, $\sin(x)/x$ (sinc), gaussian, lorentz, exponential rise, exponential decay, haversine, cardiac, and arbitrary

Amplitude and frequency range

Signal type	Amplitude range 50 Ω	Amplitude range 1 MΩ	Frequency range
Sine	10 mV to 2.5 V	20 mV to 5 V	0.1 Hz to 50 MHz
Square	10 mV to 2.5 V	20 mV to 5 V	0.1 Hz to 20 MHz
Pulse	10 mV to 2.5 V	20 mV to 5 V	0.1 Hz to 20 MHz
Ramp	10 mV to 2.5 V	20 mV to 5 V	0.1 Hz to 500 KHz
DC Level	-	20 mV to 5V	-

2 Series MSO Mixed Signal Oscilloscope Datasheet

Signal type	Amplitude range 50 Ω	Amplitude range 1 M Ω	Frequency range
Gaussian	10 mV to 1.25 V	20 mV to 2.5 V	0.1 Hz to 5 MHz
Lorentz	10 mV to 1.2 V	20 mV to 2.4 V	0.1 Hz to 5 MHz
Haversine	10 mV to 1.25 V	20 mV to 2.5 V	0.1 Hz to 5 MHz
Exponential	10 mV to 1.25 V	20 mV to 2.5 V	0.1 Hz to 5 MHz
Sin(X)/X	10 mV to 1.5 V	20 mV to 3 V	0.1 Hz to 2 MHz
Random noise	10 mV to 2.5 V	20 mV to 5 V	-
Cardiac	10 mV to 2.5 V	20 mV to 5 V	0.1 Hz to 500 KHz
Arbitrary	10 mV to 2.5 V	20 mV to 5 V	0.1 Hz to 25 MHz

DC offset range

± 2.5 V into Hi-Z, ± 1.25 V into 50 Ω

DC offset resolution

1 mV into Hi-Z, 500 μ V into 50 Ω

DC offset accuracy

\pm [(1.5% of absolute offset voltage setting) + 1 mV]

Guaranteed, specification valid after 30 minute warm-up and Signal Path Compensation (SPC) at ambient.

Digital pattern generator

Number of channels	4
Pattern memory length	4 K bits
Bit rate	1 bps to 25 Mbps

Display

Display type

10.1 Inch LCD capacitive touch display

Display resolution

1280 x 800

Display modes

Overlay

Stacked

Zoom

Horizontal and vertical zooming is supported in all waveform and plot views.

2 Series MSO Mixed Signal Oscilloscope Datasheet

Interpolation

Sin(x)/x and linear

Waveform styles

Vectors, dots, variable persistence, and infinite persistence

Graticules

Movable and fixed graticules, selectable between grid, time, full, and none

Color palettes

- Normal and inverted for screen captures
- Individual waveform colors are user-selectable

Format

YT, XY

Language support

English, Japanese, Simplified Chinese, Traditional Chinese, French, German, Italian, Spanish, Portuguese, Russian, Korean

Input and Output ports

USB interface

- Two USB 2.0 host ports
- One USB device port (providing USBTMC support)

Ethernet interface

One ethernet port, 10/100 Mb/s, and 1000 Mbps ethernet (in full duplex mode only)

Probe compensation signal

- Amplitude: 0 to 2.5 V
- Frequency: 1 kHz
- Source impedance: 1 k Ω

Aux out

Front panel BNC connector multiplexed with AFG out. Output can be configured to provide a positive or negative pulse when oscilloscope triggers.

Characteristics	Limits
Vout (HI)	≥ 2.5 V open circuit; ≥ 1.0 V into a 50 Ω load to ground.
Vout (LO)	≤ 0.7 V into a load of ≤ 4 mA; ≤ 0.25 V into a 50 Ω load to ground.

Aux input

300 V_{rms} CAT II with peaks $\leq \pm 425$ V.

Security lock

Rear-panel security slot connects to standard T-bar style Kensington-style lock.

2 Series MSO Mixed Signal Oscilloscope Datasheet

VESA mount

Standard (VESA MIS-D 100) 100 mm x 100 mm VESA mounting points on rear of instrument.

Ground lug

Provides a safe ground return path when the instrument is operating on battery.

Software

VNC

Remotely control and view the screen on the instrument

IVI Driver

Provides a standard instrument programming interface for common applications such as LabVIEW, LabWindows/CVI, Microsoft .NET, and MATLAB. Compatible with python, C/C++/C# and many other languages through VISA.

TekScope

TekScope brings the power of the oscilloscope analysis environment to the PC. You can have the flexibility to perform analysis tasks including serial decode, power analysis, timing, eye, and jitter analysis outside the lab. Visit <https://www.tek.com/software/tekscope-pc-analysis-software> to learn more.

TekDrive

Upload, store, organize, search, download, and share any file type from any connected device. TekDrive is natively integrated into the 2 Series MSO for seamless sharing and recalling of files - no USB stick is required. Visit <http://www.tek.com/software/tekdrive> to learn more.

Programming examples

Programming with the 2/4/5/6 Series platforms has never been easier. With a programmers manual and a GitHub site you have many commands and examples to help you get started remotely automating your instrument. See <https://github.com/TEKTRONIX/PROGRAMMATIC-CONTROL-EXAMPLES>

Power

Line power

100 - 240 V \pm 10% at 50 Hz to 60 Hz

AC Adapter output

24 V DC, 2.71 A

Power consumption

60 W (max)

Battery

Battery power

- Requires Opt 2-BATPK or 2-BP battery pack, with 2 slots for batteries
- Supports up to 2 TEKBAT-01 Li-Ion rechargeable batteries

Cell chemistry

Li-Ion

Nominal capacity

6700 mAh

Voltage

14.52 VDC

Weight

450 g/1lb

Operating time, typical

- Up to 4 hours single battery
- Up to 8 hours dual batteries
- Hot swappable

Physical characteristics

Instrument only

- Height: 210 mm (8.26 in)
- Width: 344 mm (13.54 in)
- Depth: 40.4 mm (1.59 in)
- 1.8 kg (4 lbs)

Instrument with battery pack

- Height: 210 mm (8.26 in)
- Width: 344 mm (13.54 in)
- Depth: 78 mm (3.07 in)
- 3.2 kg (7 lbs) – one battery
- 3.6 kg (8 lbs) – two batteries

Rackmount configuration

5U

Clearance requirements

The clearance requirement for adequate cooling is 13 mm (0.5 in) on the rear of the instrument along the bottom edge (inlet vents) and top edge (exhaust vents).

EMC, environmental, and safety

Temperature

- Operating: 0 °C to +50 °C (+32 °F to 120 °F)
- Operating battery: 0 °C to 45 °C (+32 °F to 113 °F)
- Non-operating: -20 °C to +60 °C (-4 °F to 140 °F)

2 Series MSO Mixed Signal Oscilloscope Datasheet

Humidity

- Operating: 5% to 90% relative humidity at temperatures up to +30 °C, 5% to 60% relative humidity at temperatures greater than +30 °C and up to +50 °C.
- Non-operating: 5% to 90% relative humidity at temperatures up to +30 °C, 5% to 60% relative humidity at temperatures greater than +30°C and up to +60 °C.

Altitude

- Operating: Up to 3,000 meters (9,842 feet)
- Non-operating: Up to 12,000 meters (39,370 feet)

Regulatory compliance

EMC	Conforms to European Union EMC Directive (CE-marked)
Safety	Conforms to European Union Low Voltage Directive (CE-marked) Conforms to ANSI/UL61010-1 and ANSI/UL61010-2-030 (CSA-marked) Certified to CAN/CSA C22.2 No.61010-1 and CAN/CSA C22.2 No.61010-2-030 (CSA-marked)
RoHS	Conforms to European Union Restrictions on Hazardous Substances (CE-marked)

Ordering information

Select the appropriate instrument and options for your measurement needs.

Model	Description
MSO22	Mixed Signal Oscilloscope: 2 analog channels, 2.5 GS/s sample rate, 10 Mpts record length
MSO24	Mixed Signal Oscilloscope: 4 analog channels, 2.5 GS/s sample rate, 10 Mpts record length
MSO22-EDU	Mixed Signal Oscilloscope: 2 analog channels, 16 digital channels, 2-ULTIMATE, 2-MSO, T5
MSO24-EDU	Mixed Signal Oscilloscope: 4 analog channels, 16 digital channels, 2-ULTIMATE, 2-MSO, T5

Each model includes

TPP0200 200 MHz, 10:1 probe (one per channel)

One P6316 logic probe for MSO22-EDU and MSO24-EDU models

Instrument stand

Installation and safety manual (translated in English, Japanese, and Simplified Chinese)

Embedded help

External power supply

Calibration certificate documenting traceability to National Metrology Institute(s) and ISO9001/ISO17025 (compliant) quality system registration

Configure bandwidth (required)

Configure your oscilloscope by selecting the analog channel bandwidth you need. You can also upgrade the bandwidth later by purchasing an upgrade option.

Bandwidth option	Bandwidth range
2-BW-70	70 MHz
2-BW-100	100 MHz
2-BW-200	200 MHz
2-BW-350	350 MHz (not available on MSO2X-EDU)
2-BW-500	500 MHz (not available on MSO2X-EDU)

Add functionality

Order additional items with your instrument.

Option	Description
2-P6139B	Add 500 MHz, 10x probes (one per channel). This is the recommended option for 350 MHz or 500 MHz bandwidth instruments.
2-BATPK	Battery pack with 2 battery slots and 1 battery (ships with instrument) for use with the 2 Series MSO.

Add instrument software functionality with an option bundle

Choose from option bundles with different levels of functionality to suit your application needs.

Feature	Description
2-MSO	Add MSO function with 16 digital channels; includes P6316 digital probe and accessories; included on MSO2X-EDU
2-SOURCE	Arbitrary function generator (AFG), digital pattern generator (DPG), and frequency response analysis (Bode plot); included on MSO2X-EDU
2-SERIAL	I ² C, SPI, RS-232/422/485/UART, CAN, CAN FD, CAN XL, LIN, Automotive Ethernet 10BASE-T1S, and SENT serial trigger and analysis; included on MSO2X-EDU
2-ULTIMATE	Includes 2-SOURCE and 2-SERIAL

Add additional probes and adapters

Add additional recommended probes and adapters

Passive voltage probes	Description
TPP0100	100 MHz bandwidth, 10x attenuation, BNC interface
TPP0200	200 MHz bandwidth, 10x attenuation, BNC interface
P2221	6 MHz to 200 MHz bandwidth, 1x / 10x attenuation, BNC interface
P6139B	500 MHz bandwidth, 10x attenuation, BNC interface
P6101B	15 MHz bandwidth, 1x attenuation, BNC interface
P3010	100 MHz bandwidth, 10x attenuation, BNC interface
Current probes	Description
TCPA300	Current probe amplifier; 50 Ω feed-through termination (011-0049-XX) is required
With TCP312A	DC to 100 MHz, 1 mA
With TCP305A	DC to 50 MHz, 5 mA
With TCP303	DC to 15 MHz, 5 mA
TCPA400	Current probe amplifier; 50 Ω feed-through termination (011-0049-XX) is required
With TCP404XL	DC to 2 MHz, 1 A
TCP2020	DC to 50 MHz, 10 mA
A621	5 Hz to 50 kHz, 10 mA to 2000 A pk
A622	DC to 100 kHz
P6021A	120 Hz to 60 MHz, 2 mA/mV, 10 mA/mV
P6022	935 Hz to 120 MHz, 1 mA/mV, 10 mA/mV
TRCP3000	1 Hz to 16 MHz, 2 mV/A

2 Series MSO Mixed Signal Oscilloscope Datasheet

TRCP0600	12 Hz to 30 MHz, 10 mV/A
TRCP0300	9 Hz to 30 MHz, 20 mV/A
CT1	25 KHz to 1 GHz, 5 mV/mA
CT2	1.2 KHz to 200 MHz, 5 mV/mA
CT6	250 KHz to 2 GHz, 5 mV/mA
High voltage single ended probe	Description
P5100A	500 MHz bandwidth, 100x attenuation
P6015A	75 MHz bandwidth, 1000x attenuation
P5122	200 MHz bandwidth, 100x attenuation
High voltage differential probe	Description
P5200A	50 MHz bandwidth, 50:1/500:1 attenuation
Digital logic probe	Description
P6316	16 channel digital probe for MSO functionality

Select accessories

Add additional recommended accessories

Optional accessories	Description
2-BP	Battery pack with 2 battery slots and 1 battery for use with 2 Series MSO (ships separately)
TEKBAT-01	Additional battery for use with battery pack 2-BP or Opt 2-BATPK
TEKCHG-01	Standalone battery charger for charging TEKBAT-01 battery
2-RK	Rackmount kit
2-PC	Carrying bag with kickstand and protective case for instrument
2-HC	Hard carrying case
119-9125-XX/065-1090-00	Additional AC/DC power supply
065-1088-XX	Additional 2 Series MSO stand

Select power cord option

Optional accessories	Description
A0	North America power plug (115 V, 60 Hz)
A1	Universal Euro power plug (220 V, 50 Hz)
A2	United Kingdom power plug (240 V, 50 Hz)

2 Series MSO Mixed Signal Oscilloscope Datasheet

A3	Australia power plug (240 V, 50 Hz)
A5	Switzerland power plug (220 V, 50 Hz)
A6	Japan power plug (100 V, 50/60 Hz)
A10	China power plug (50 Hz)
A11	India power plug (50 Hz)
A12	Brazil (60 Hz)
A99	No power cord
E1	Universal euro bundle

Select service options

Protect your investment and your uptime with a service package for your 2 Series MSO.

Optimize the lifetime value of your purchase and lower your total cost of ownership with a calibration and extended warranty plan for your 2 Series MSO. Plans range from standard warranty extensions covering parts, labor, and 2-day shipping to Total Product Protection with repair or replacement coverage from wear and tear, accidental damage, ESD or EOS. See the below table for specific service options available on the 2 Series MSO family of products. Compare factory service plans <https://www.tek.com/en/services/factory-service-plans>.

Additionally, Tektronix is a leading accredited calibration services provider for all brands of electronic test and measurement equipment, servicing more than 140,000 models from 9,000 manufacturers. With 100+ labs worldwide, Tektronix serves as a global partner, delivering tailored whole-site calibration programs with OEM quality at a market price. View whole site calibration service capabilities <https://www.tek.com/en/services/calibration-services>.

Service options	Description
R3	Standard warranty extended to 3 years. Covers parts, labor cost, and 2-day shipping within country. Guarantees faster repair time than without coverage. All repairs include calibration and updates. Hassle free - a single call starts the process
R5	Standard warranty extended to 5 years. Covers parts, labor cost, and 2-day shipping within country. Guarantees faster repair time than without coverage. All repairs include calibration and updates. Hassle free - a single call starts the process
T3	Three year total protection plan, includes repair or replacement coverage from wear and tear, accidental damage, ESD or EOS plus preventative maintenance. Including a 5 day turnaround time and priority access to customer support
T5 (standard on MSO2X-EDU)	Five year total protection plan, includes repair or replacement coverage from wear and tear, accidental damage, ESD or EOS plus preventative maintenance. Including a 5 day turnaround time and priority access to customer support
C3	Calibration service 3 years. Includes traceable calibration or functional verification where applicable, for recommended calibrations. Coverage includes the initial calibration plus 2 years calibration coverage.
C5	Calibration service 5 years. Includes traceable calibration or functional verification where applicable, for recommended calibrations. Coverage includes the initial calibration plus 4 years calibration coverage.
D1	Calibration data report
D3	Calibration data report 3 years (with option C3)
D5	Calibration data report 5 years (with option C5)

Ordering information post purchase

The 2 Series products offer many options to easily add functionality after the initial purchase.

Bandwidth upgrades after purchase

The analog bandwidth of the 2 Series MSO can be upgraded after the initial purchase. Bandwidth upgrades are purchased based on the current bandwidth and the desired bandwidth. All bandwidth upgrades can be performed in the field by installing a license.

Supported model	Bandwidth option	Bandwidth before upgrade	Bandwidth after upgrade
MSO22	SUP2-BW70T100-2	70 MHz	100 MHz
	SUP2-BW70T200-2	70 MHz	200 MHz
	SUP2-BW70T350-2	70 MHz	350 MHz
	SUP2-BW70T500-2	70 MHz	500 MHz
	SUP2-BW100T200-2	100 MHz	200 MHz
	SUP2-BW100T350-2	100 MHz	350 MHz
	SUP2-BW100T500-2	100 MHz	500 MHz
	SUP2-BW200T350-2	200 MHz	350 MHz
	SUP2-BW200T500-2	200 MHz	500 MHz
	SUP2-BW350T500-2	350 MHz	500 MHz
MSO24	SUP2-BW70T100-4	70 MHz	100 MHz
	SUP2-BW70T200-4	70 MHz	200 MHz
	SUP2-BW70T350-4	70 MHz	350 MHz
	SUP2-BW70T500-4	70 MHz	500 MHz
	SUP2-BW100T200-4	100 MHz	200 MHz
	SUP2-BW100T350-4	100 MHz	350 MHz
	SUP2-BW100T500-4	100 MHz	500 MHz
	SUP2-BW200T350-4	200 MHz	350 MHz
	SUP2-BW200T500-4	200 MHz	500 MHz
	SUP2-BW350T500-4	350 MHz	500 MHz

Instrument functionality upgrade with one of the option bundles

Option bundles with different levels of functionality are being offered to suit different application needs.

Feature	Description
2-SOURCE	Arbitrary function generator (AFG), digital pattern generator (DPG), and frequency response analysis (Bode Plot)

2 Series MSO Mixed Signal Oscilloscope Datasheet

2-SERIAL	I ² C, SPI, RS-232/422/485/UART, CAN, CAN FD, CAN XL, LIN, Automotive Ethernet 10BASE-T1S, and SENT serial trigger and analysis
2-ULTIMATE	2-SOURCE, 2-SERIAL
SUP2-MSO	Add MSO function with 16 digital channels; includes P6316 digital probe and accessories

Additional software for extended functionality

Purchase additional software with flexible licensing to extend the capabilities of your instrument for collaboration and offline analysis. Option bundles with different levels of functionality are being offered to suit different application needs. Each of these bundles can be purchased as a 1-year subscription or as a perpetual license.

Software option	Description
TEKSCOPE-STARTER	TekScope PC software bundles for various applications
TEKSCOPE-PRO-AUTO	
TEKSCOPE-PRO-SR	
TEKSCOPE-PRO-PWR	
TEKSCOPE-PRO-MIL	
TEKSCOPE-ULTIMATE	
TEKDRIVE-STARTER	TekDrive software for T&M workspace collaboration
TEKDRIVE-PRO	
TEKDRIVE-ULTIMATE	
KICKSTART-SUITE	Kickstart instrument control and data analysis software
KICKSTART-AFG	
KICKSTART-DL	
KICKSTART-DMM	
KICKSTART-IVC	
KICKSTART-PS	
KICKSTART-SCOPE	
KICKSTART-HRMA2	
KICKSTART-ACT1/2/5	

Certifications

Tektronix is registered to ISO 9001:2015 and ISO 14001:2015.

Contact Information:

Australia 1 800 709 465
Austria* 00800 2255 4835
Balkans, Israel, South Africa and other ISE Countries +41 52 675 3777
Belgium* 00800 2255 4835
Brazil +55 (11) 3530-8901
Canada 1 800 833 9200
Central East Europe / Baltics +41 52 675 3777
Central Europe / Greece +41 52 675 3777
Denmark +45 80 88 1401
Finland +41 52 675 3777
France* 00800 2255 4835
Germany* 00800 2255 4835
Hong Kong 400 820 5835
India 000 800 650 1835
Indonesia 007 803 601 5249
Italy 00800 2255 4835
Japan 81(3) 6714 3086
Luxembourg +41 52 675 3777
Malaysia 1 800 22 55835
Mexico, Central/South America and Caribbean 52 (55) 88 69 35 25
Middle East, Asia, and North Africa +41 52 675 3777
The Netherlands* 00800 2255 4835
New Zealand 0800 800 238
Norway 800 16098
People's Republic of China 400 820 5835
Philippines 1 800 1601 0077
Poland +41 52 675 3777
Portugal 80 08 12370
Republic of Korea +82 2 565 1455
Russia / CIS +7 (495) 6647564
Singapore 800 6011 473
South Africa +41 52 675 3777
Spain* 00800 2255 4835
Sweden* 00800 2255 4835
Switzerland* 00800 2255 4835
Taiwan 886 (2) 2656 6688
Thailand 1 800 011 931
United Kingdom / Ireland* 00800 2255 4835
USA 1 800 833 9200
Vietnam 12060128

* European toll-free number. If not accessible, call: +41 52 675 3777

Find more valuable resources at [TEK.COM](https://www.tek.com)

Tektronix[®]

Copyright © Tektronix. All rights reserved. Tektronix products are covered by U.S. and foreign patents, issued and pending. Information in this publication supersedes that in all previously published material. Specification and price change privileges reserved. TEKTRONIX and TEK are registered trademarks of Tektronix, Inc. All other trade names referenced are the service marks, trademarks or registered trademarks of their respective companies.

48W-73857-13 24 June 2026