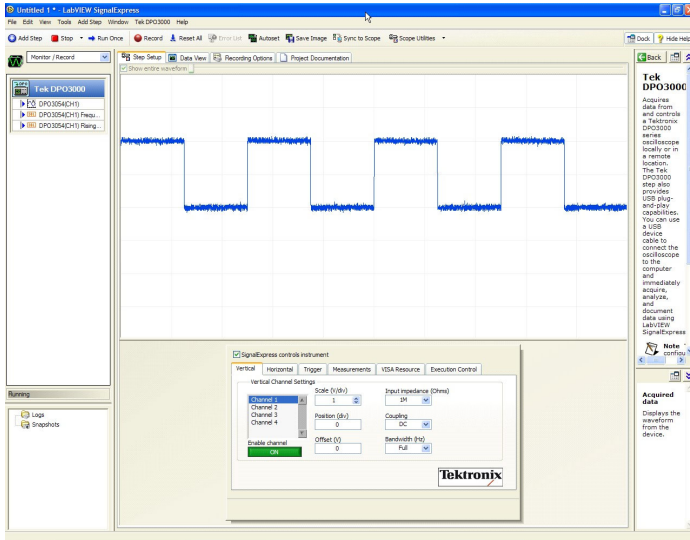


# Tektronix Edition of NI LabVIEW SignalExpress™

## SIGEXPTE Data Sheet



## Features & Benefits

- Provides Instrument Control for the DPO/DSA70000, MSO70000, DPO7000, MSO/DPO5000, MDO4000, MSO/DPO4000, MSO/DPO3000, MSO/DPO2000, TDS3000, TDS2000, TPS2000, and TDS1000 Series Oscilloscopes, AFG3000 Series Arbitrary/Function Generators, DMM4000 Series Multimeters, PWS4000 Series Power Supplies, and FCA/MCA3000 Series Timer/Counters
- Quickly Start Measuring with an Intuitive Drag-and-Drop Interface that Does Not Require Any Programming
- Measurement Trending
- Data Logging
- Advanced Analysis and Documentation Capabilities
- Quickly and Easily Import Simulated Results and Compare Against Actual Measured Results Live on the Screen
- Automatic Frequency Sweeping
- Limit Testing
- Connect and Control Multiple Instruments from within One Software Environment



Industry's first true USB plug-and-play connectivity for oscilloscopes and bench instruments.

## Increase Your Productivity with the Industry's Most Seamless Instrument-to-PC Connectivity Solution

Configuring test instruments to connect with PC-based software is often a difficult and frustrating challenge. That's why Tektronix and National Instruments have partnered together to create the Tektronix Edition of National Instruments LabVIEW SignalExpress™ – interactive measurement and analysis software designed for design and test engineers who need to quickly acquire, analyze, and document measurements without the added complication of programming.

### USB Plug-and-Play

With USB plug-and-play support, NI LabVIEW SignalExpress TE immediately detects and configures Tektronix instruments when connected to a PC\*1, providing a live view of the data acquisition and immediate control of the instrument.

### Import and Compare

Integrate measurements with simulated results from popular design software tools such as PSpice, SPICE, and Multisim. This enables quick and easy importing and comparing of simulated results – saving time and improving design accuracy.

### Capture and Document

Quickly capture and document measurements by simply dragging and dropping acquired data and waveform captures directly into Microsoft Excel, Word, Outlook, PowerPoint, and WordPad. Or annotate waveforms and measurements in the interactive project documentation tool.

### Advanced Analysis

NI LabVIEW SignalExpress TE contains more than 200 different measurement, processing, analysis, and reporting capabilities that can be applied to data being acquired from Tektronix instruments.

**Measurement Trending** – Automated measurements from the oscilloscope or multimeter are graphed over time to provide a simple indication of trends in the measurement parameters.

**Data Logging** – Waveform data and measurements can be automatically logged to the PC's disk drive for unattended and long-term monitoring applications.

### Automated Measurements

Take advantage of several major time-saving features, including automated measurement sweeping and limit testing. These features provide relief from a traditionally manual and time-intensive process.

### Connect and Control

Remove the guesswork when connecting the test instrument to a PC by connecting and controlling multiple instruments from one software environment, all within a single drag-and-drop user interface.

### SIGEXPTE

The LE version of NI LabVIEW SignalExpress TE comes standard with the DPO7000C, MSO/DPO5000, MDO4000, MSO/DPO4000B, MSO/DPO3000, MSO/DPO2000, TDS3000C, TDS2000C, TPS2000B, and TDS1000B Series oscilloscopes, the DMM4000 Series multimeters, AFG3000 Series arbitrary/function generators, PWS4000 Series power supplies, and FCA/MCA Series timer/counters. SIGEXPTE adds extended analysis capabilities.

\*1 Compatible with the DPO/DSA70000, MSO70000, DPO7000/C, MSO/DPO5000, MDO4000, MSO/DPO4000/B, MSO/DPO3000, MSO/DPO2000, TDS2000B/C, and TDS1000B Series oscilloscopes, the AFG3000 Series arbitrary/function generators, PWS4000 Series power supplies, and FCA/MCA Series timer/counters. Requires Microsoft Windows XP/2K or Vista operating system.

**NI LabVIEW SignalExpress TE Features – LE Version and SIGEXPTE Version**

Features	LE Version	SIGEXPTE Version
Instrument Control* <sup>2</sup> (Horz Vert Trig Pos)	X	X
Customizable Graphs and Interactive Cursors	X	X
Tektronix Instrument Support through USB		MSO/DPO5000 MDO4000 MSO/DPO4000/B MSO/DPO3000 MSO/DPO2000 TDS2000B/C TPS2000B (with RS-232 to USB adapter cable) TDS1000B AFG3000 DMM4000 PWS4000 FCA3000 MCA3000
Tektronix Instrument Support through Ethernet		DPO70000 DSA70000 MSO70000 DPO7000/C MSO/DPO5000 MDO4000 MSO/DPO4000/B MSO/DPO3000 MSO/DPO2000 TDS3000B/C AFG3000
Tektronix Instrument Support through GPIB		DPO/DSA/MSO70000, DPO7000/C Series DMM4050, DMM4040 FCA/MCA3000 Series TDS3000B/C Series with TDS3GV module TDS2000/1000 Series with TDS2CMA module MSO/DPO5000, MDO4000, MSO/DPO4000/B, MSO/DPO3000, MSO/DPO2000, TDS2000B/C, TDS1000B, PWS4000, and AFG3000 Series with TEK-USB-488 adapter
Generic IVI Support for Hundreds of Common Benchtop Instruments	X	X
pSpice, SPICE File Conversion from EDA Tools	—	X
Save Signals to File	X	X
Basic Logging to Disk	X	X
Advanced Data Logging (including alarms and events)	—	X

Features	LE Version	SIGEXPTE Version
Drag and Drop Data into Microsoft Excel and Word	X	X
Interactive Reporting	—	X
Measurement Trending	X	X
Advanced Analysis	—	Amplitude and Level Timing and Transition Histograms Power Spectrum Frequency Response Distortion Tone Extraction
Signal Processing	—	Software Filtering Scalar/Waveform Math Analog/Digital Conversion Windowing Scaling and Conversion
Automated Sweeping and Limit Testing	—	X
NI LabVIEW Integration	—	X

\*<sup>2</sup> Controls only analog channels on MSO70000, MSO5000, MDO4000, MSO4000, MSO3000, MSO2000 Series Mixed Signal Oscilloscopes.

**Characteristics**

**System Requirements**

Characteristic	Minimum	Recommended
Operating System	Windows XP/2000	Windows XP/2000/Vista
RAM	512 MB	>512 MB
Processor	Pentium III or later or Celeron 600 MHz or equivalent	Pentium 4 or equivalent

**Ordering Information**

**SIGEXPTE**

National Instruments LabVIEW SignalExpress Tektronix Edition Software.



Tektronix is registered to ISO 9001 and ISO 14001 by SRI Quality System Registrar.



Product(s) complies with IEEE Standard 488.1-1987, RS-232-C, and with Tektronix Standard Codes and Formats.

**Contact Tektronix:**

**ASEAN / Australasia** (65) 6356 3900  
**Austria** 00800 2255 4835\*  
**Balkans, Israel, South Africa and other ISE Countries** +41 52 675 3777  
**Belgium** 00800 2255 4835\*  
**Brazil** +55 (11) 3759 7627  
**Canada** 1 800 833 9200  
**Central East Europe and the Baltics** +41 52 675 3777  
**Central Europe & Greece** +41 52 675 3777  
**Denmark** +45 80 88 1401  
**Finland** +41 52 675 3777  
**France** 00800 2255 4835\*  
**Germany** 00800 2255 4835\*  
**Hong Kong** 400 820 5835  
**India** 000 800 650 1835  
**Italy** 00800 2255 4835\*  
**Japan** 81 (3) 6714 3010  
**Luxembourg** +41 52 675 3777  
**Mexico, Central/South America & Caribbean** 52 (55) 56 04 50 90  
**Middle East, Asia, and North Africa** +41 52 675 3777  
**The Netherlands** 00800 2255 4835\*  
**Norway** 800 16098  
**People's Republic of China** 400 820 5835  
**Poland** +41 52 675 3777  
**Portugal** 80 08 12370  
**Republic of Korea** 001 800 8255 2835  
**Russia & CIS** +7 (495) 7484900  
**South Africa** +41 52 675 3777  
**Spain** 00800 2255 4835\*  
**Sweden** 00800 2255 4835\*  
**Switzerland** 00800 2255 4835\*  
**Taiwan** 886 (2) 2722 9622  
**United Kingdom & Ireland** 00800 2255 4835\*  
**USA** 1 800 833 9200

\* European toll-free number. If not accessible, call: +41 52 675 3777

Updated 10 February 2011

**For Further Information.** Tektronix maintains a comprehensive, constantly expanding collection of application notes, technical briefs and other resources to help engineers working on the cutting edge of technology. Please visit [www.tektronix.com](http://www.tektronix.com)



Copyright © Tektronix, Inc. All rights reserved. Tektronix products are covered by U.S. and foreign patents, issued and pending. Information in this publication supersedes that in all previously published material. Specification and price change privileges reserved. TEKTRONIX and TEK are registered trademarks of Tektronix, Inc. All other trade names referenced are the service marks, trademarks, or registered trademarks of their respective companies.

25 Apr 2012

61W-19402-12

