

For the Tektronix BERTScope™ BSA

GRL MIPI MPhyRx Test Application Software for the Tektronix BERTScope and Real time Oscilloscope

Quickly run MIPI MPhy Receiver electrical testing consistent with CTS with automated calibration

Product Overview

GRL's MIPI MPhy Receiver Calibration and Test Application Software for the Tektronix BERTScope™ BSA(GRL-MIPI-MPHY-RX) provides an automated, simple, and efficient way to test MIPI MPhy Receiver to the Jitter Tolerance and other test requirements of MIPI MPHY Compliance Test Specification version 3.0r18. GRL-MIPI_MPHY-RX automates HS mode measurements at Gear1 , Gear2 and Gear3 and PWM mode Gear0 to Gear7, and runs on any Windows 7 or Windows 8 OS-based PC or Oscilloscope.

GRL-MIPI-MPHY-RX eliminates the need for user interaction during testing. GRL-MIPI-MPHY-RX enables automated calibration between the BERTScope and real-time oscilloscope to generate stressed-signal conditions for MIPI Rx Compliance testing.

GRL's unique test automation software provides a simple user interface to automate the complex MIPI testing helps to reduce the time required for calibrating the equipments significantly.

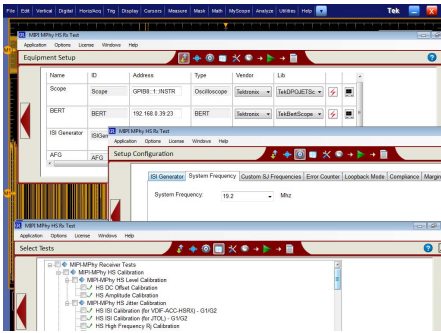
Features

- » Conformance to MIPI CTS version 3.0r18
- » Automate MIPI MPhy Receiver electrical calibration and compliance Testing consistent
- » HS mode measurement support for Gear 1, Gear 2 and Gear 3
- » PWM mode measurement support for Gear 0 to Gear 7
- » Minimize human intervention to complete MIPI MPhy Receiver tests.
- » Support for Variable ISI Hardware Solutions
- » Simple Setup, Test Execution, and Reporting in PDFfiles

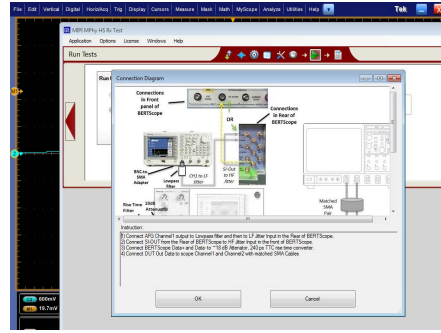
Tektronix®
Solutions Partner



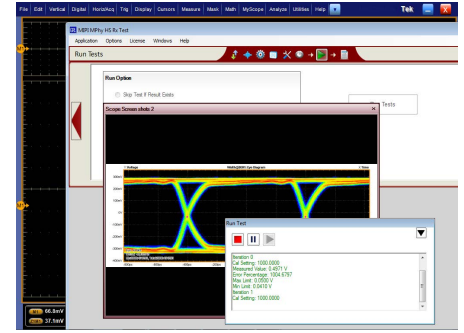
- » Perform Receiver test for MIPI MPhy at the push of a button
- » Achieve consistent results with rapid test execution
- » Minimize human intervention to complete MIPI MPhyReceiver tests
- » Automate sending training patterns used BERTScope



Fully Configurable and Customizable



Easy to follow Connection Diagram



Push Button Automation

Application Specifications

GRL MIPI MPhyRx Test Application Software for the Tektronix BERTScope and Real time Oscilloscope

| | |
|-------------------------------|---|
| Specification | Conformance to MIPI MPhy CTS version 3.0r18. |
| Number of Lanes | 1 |
| Data Rates Required Equipment | <p>Tektronix BERTScope™ BSA(8Gb/s or above) Tektronix Real-Time Oscilloscope (DPO/DSA/MSO-C series for G1/G2, DX-Series for G3) Tektronix DPOJET (Jitter and Eye Analysis) Software Tektronix Clock Recovery Unit(Optional) AFG3252C</p> <p>SLP-30+ Mini Circuits Low Pass Filter.</p> <p>BNC to SMA adapter</p> <p>2 x 18db Attenuators</p> <p>ISI Channel (Variable or Fixed):</p> <p>Variable –ACE Unitek CLE1000-A2(for G1/G2), CLE1000-S2(for G3)</p> <p>Fixed – BERTScope™ ISI Boards</p> <p>2 xPicosecond Pulse Labs Model # 5915-110-240PS 240ps (90%/10%) rise-time filters(90/10%) for GEAR 1 A/B</p> <p>2 xPicosecond Pulse Labs Model # 5915-119-130ps 130ps(90%/10%) rise-time filters(90/10%) for GEAR 2 A/B</p> <p>2 x Picosecond Pulse Labs Model # 5915-110-65PS 65ps rise-time filters(90/10%) for GEAR 3 A/B</p> <p>2 x differential Probes or 1 x tri-state probe(eg: P7313 for G1/G2 and PWM, 7625 for G3) 8 x SMA cables.</p> |

Ordering information

For a formal quote and pricing contact info@graniteriverlabs.com or your Tektronix sales representative

| Model Number | Description |
|------------------|--|
| GRL-MIPI-MPHY-RX | MIPI MPhy Receiver Calibration and Test Software |



World Wide Headquarters

Granite River Labs Inc.
3500 Thomas Road, Suite A
Santa Clara, CA 95054 USA
+1 (408) 627-7608

info@graniteriverlabs.com

www.graniteriverlabs.com

About Granite River Labs

Granite River Labs (GRL) provides end-to-end Engineering Services and Test Solutions to help hardware engineers adopt high speed interfaces. A trusted partner of small up-and-coming hardware developers to some of the largest companies in the world, GRL combines recognized industry experts, high performance test equipment, automated test solutions, and convenient locations to provide the utmost in customer service and robust, user-friendly tools. Together with our customers we overcome challenges with designing and validating early stage products and new connectivity technologies.

For additional information or questions regarding Granite River Labs Test Solutions, including quotes, product demonstrations, software and technical assistance please contact us at:
info@graniteriverlabs.com.

©Granite River Labs Asia Pacific Pte. Ltd. All rights reserved. All trademarks used in this document are the property of their respective owners. Product specifications and descriptions in this document subject to change without notice. Contact your sales consultant for the latest information.
GRL-MIPI-MPHY-RX, published Sep 2015