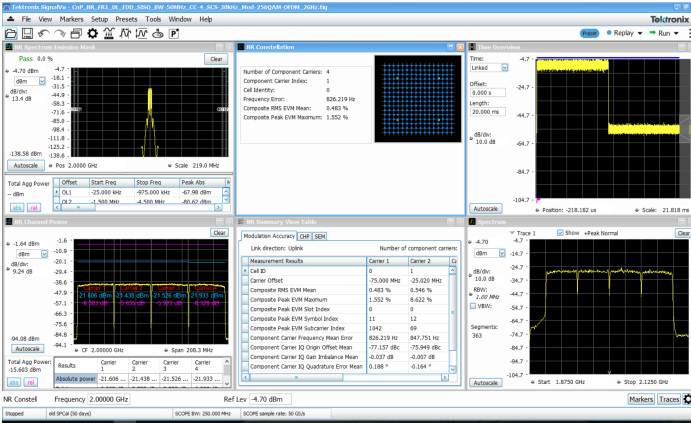


# RF and Vector Signal Analysis for Oscilloscopes

## SignalVu® Datasheet



- FastFrame segmented memory captures signal bursts without storing the signal's off time
- Supports RF, I and Q, and differential I and Q signals using the oscilloscope's 4 analog inputs
- Analyze
  - 5G New Radio (NR) uplink/downlink RF power, Power dynamics, Signal quality, and Emissions measurements based on the 3GPP release 15/16 Standard
  - Extensive time-correlated, multidomain displays connect events in time, frequency, phase, and amplitude for quicker understanding of cause and effect when troubleshooting
  - Power measurements and signal statistics help you characterize components and systems: SEM, Multicarrier ACLR, Power vs. Time, CCDF, OBW/EBW, and Spur Search
  - WLAN spectrum and modulation transmitter measurements based on IEEE 802.11 a/b/g/j/p/n/ac standards (Opts. SV23, SV24, and SV25)
  - WiGig IEEE 802.11ad/ay Spectral and modulation transmitter measurements (Opt. SV30)
  - Bluetooth® Transmitter Measurements based on Bluetooth SIG RF Specifications for Basic Rate and Low Energy. Some support of Enhanced Data Rate. (Option SV27)
  - LTE™ FDD and TDD Base Station (eNB) Transmitter RF measurements (Option SV28)
  - Complete APCO Project 25 transmitter testing and analysis for Phase 1 (C4FM) and Phase 2 (TDMA) (Opt. SV26)
  - AM/FM/PM Modulation and Audio Measurements (Opt. SVA) for characterization of analog transmitters and audio signals
  - Settling Time Measurements, Frequency, and Phase (Opt. SVT) for characterization of wideband frequency-agile oscillators
  - Advanced Pulse Analysis Suite (Opt. SVP) - Automated pulse measurements provide deep insight into pulse train behavior. Measurement pulse statistics over many acquisitions (millions of pulses)
  - General Purpose Digital Modulation Analysis (Opt. SVM) provides vector signal analyzer functionality
  - Flexible OFDM analysis (Opt. SVO) with support for 802.11a/g/j and WiMAX 802.16-2004 signals
  - Frequency offset control for analyzing baseband signals with near-zero intermediate frequencies (IF)
  - Tektronix OpenChoice® makes for easy transfer to a variety of analysis programs such as Excel and Matlab

SignalVu RF and vector signal analysis software combines the signal analysis engine of the RSA5000 Series real-time spectrum analyzer with that of the industry's leading digital oscilloscopes, making it possible for designers to evaluate complex signals without an external down converter. You get the functionality of a vector signal analyzer, a spectrum analyzer, and the powerful trigger capabilities of a digital oscilloscope - all in a single package. You can use SignalVu with an MSO/DPO5000, DPO7000, or DPO/DSA/MSO70000 Series digital oscilloscope to easily validate wideband designs and characterize wideband spectral events. Whether your design validation needs include wideband radar, high data rate satellite links, wireless LAN, WiGig IEEE 802.11ad/ay, or frequency-hopping communications, SignalVu can speed your time-to-insight by showing you the time-variant behavior of these wideband signals. The 5GNR analysis plug-in is supported on Windows 10 (SignalVu), DPO70000 SX oscilloscope models.

### Key features

- Trigger
  - Integrated RF signal analysis package lets you take full advantage of oscilloscope settings
  - Pinpoint™ triggering offers over 1400 combinations to address virtually any triggering situation
- Capture
  - Direct observation of microwave signals without need of an external down converter
  - All signals up to the analog bandwidth of oscilloscope are captured into memory
  - Customize oscilloscope acquisition parameters for effective use of capture memory

## Applications

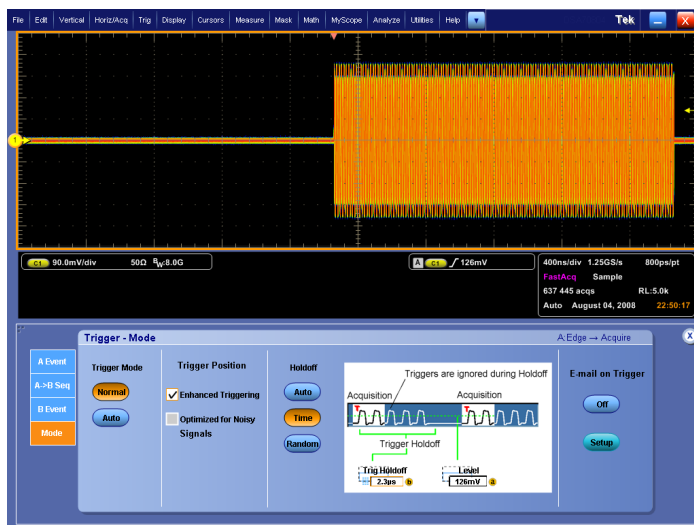
- Wideband radar and pulsed RF signals
- Frequency agile communications
- Broadband satellite and microwave backhaul links
- Wireless LAN, WiGig, Bluetooth, Commercial Wireless
- Land Mobile Radio (LMR), APCO P25
- Long Term Evolution (LTE), Cellular
- 5G NR Cellular base station or user equipment transmitter test

## Wideband signal characterization

SignalVu helps you easily validate wideband designs and characterize wideband spectral events using an MSO/DPO5000, DPO7000/ DPO70000 SX oscilloscope models, or DPO/DSA/MSO70000 Series digital oscilloscope. Users can easily switch between the SignalVu application and the oscilloscope's user interface to optimize the collection of wideband signals.

## Trigger

SignalVu software works seamlessly with the oscilloscope allowing users to utilize all of its powerful triggering capabilities. The ability to trigger on time- and amplitude-varying events of interest is paramount in wideband system design, debug, and validation. The Tektronix oscilloscopes' trigger systems allow selection of virtually all trigger types on both A and B trigger events whether they be transition, state, time, or logic qualified triggers. Once triggered, SignalVu processes the acquisition for analysis in multiple domains.

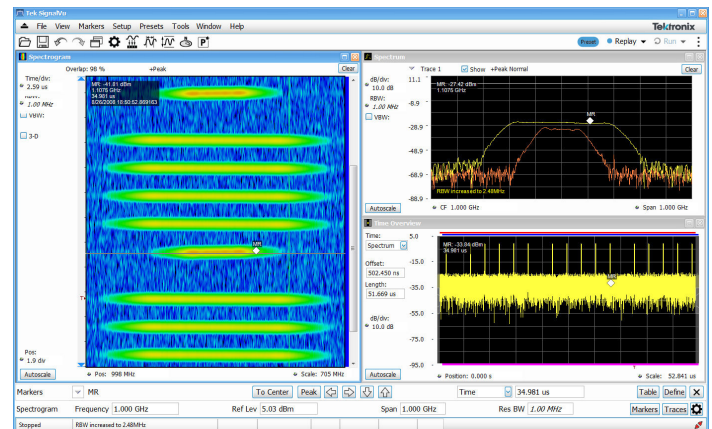


Powerful oscilloscope triggers allow the user to capture only the relevant portion of wideband signals. Pinpoint trigger functions such as combining A and B events with Edge with Holdoff can capture a pulse train during a specific transmitter mode of operation.

## Capture

Capture once - make multiple measurements without recapturing. All signals in an acquisition bandwidth are recorded into the oscilloscope's deep memory. Up to four channels can be captured simultaneously; each of which can be independently analyzed by SignalVu software. Channels can be RF, I and Q, or differential inputs. Users can also apply math functions to the acquisition prior to analysis by SignalVu. Acquisition lengths vary depending upon the selected capture bandwidth - up to 25 ms can be captured on a single channel with the MSO/DPO5000 Series, up to 12.5 ms can be acquired on a single channel with the DPO7000 Series, and up to 2.5 ms can be captured on a single channel with the DPO/DSA/MSO70000 Series. Significantly longer capture times can be realized with lower oscilloscope sample rates.

Using the FastFrame segmented memory feature in SignalVu enables you to capture events of interest, such as low duty cycle pulsed signals, while conserving acquisition memory. Using multiple trigger events, FastFrame captures and stores short-duration, bursty signals and passes them to SignalVu vector signal analysis functions. Capturing thousands of frames is possible, so long-term trends and changes in the bursty signal can be analyzed.



Once captured into memory, SignalVu provides detailed analysis in multiple domains. The spectrogram display (left panel) shows the frequency of a 500 MHz wide LFM pulse changing over time. By selecting the point in time in the spectrogram during the On time of the pulse, the chirp behavior can be seen as it sweeps from low to high (upper right panel).

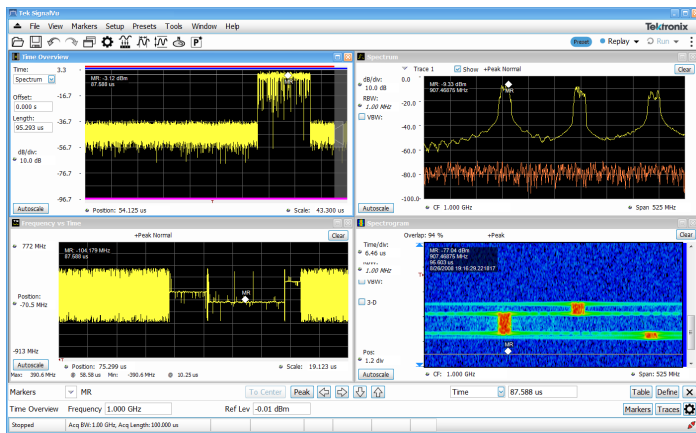
## Analyze

SignalVu RF and vector signal analysis software uses the same analysis capabilities found in the RSA5000 Series real-time spectrum analyzers. SignalVu advances productivity for engineers working on components or in wideband RF system design, integration, and performance verification, or operations engineers working in networks, or spectrum management. In addition to spectrum analysis, spectrograms display both frequency and amplitude changes over time. Time-correlated measurements can be made across the frequency, phase, amplitude, and modulation domains. This is ideal for signal

analysis that includes frequency hopping, pulse characteristics, modulation switching, settling time, bandwidth changes, and intermittent signals.

SignalVu can process RF, I and Q, and differential I and Q signals from any one of the four available oscilloscope inputs. Math functions applied by the oscilloscope are also utilized by SignalVu allowing users to apply custom filtering prior to vector signal analysis.

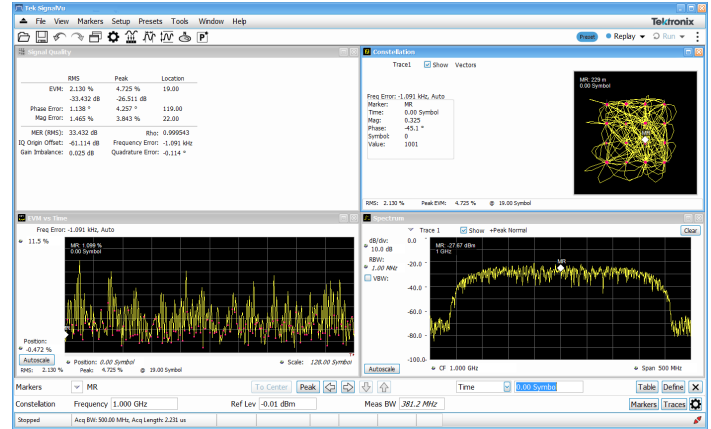
The Microsoft Windows environment makes this multidomain analysis even easier with an unlimited number of analysis windows, all time-correlated, to provide deeper insight into signal behavior. A user interface that adapts to your preferences (keyboard, front panel, touch screen, and mouse) makes learning SignalVu easy for both first-time users and experienced hands.



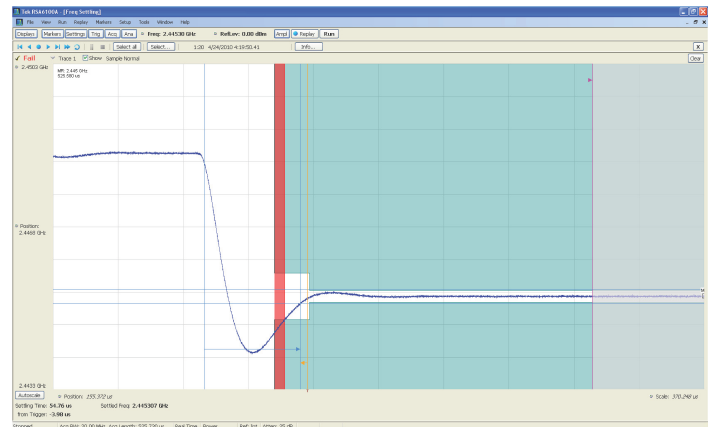
Time-correlated, multidomain view provides a new level of insight into design or operational problems not possible with conventional analysis solutions. Here, the hop patterns of a narrowband signal can be observed using Spectrogram (lower right) and its hop characteristics can be precisely measured with Frequency vs Time display (lower left). The time and frequency responses can be observed in the two top views as the signal hops from one frequency to the next.

### Options tailored for your wideband applications

SignalVu RF and vector signal analysis software is available for all MSO/DPO5000, DPO7000, DPO70000 SX oscilloscope models, and DPO/DSA/MSO70000 Series oscilloscopes and offers options to meet your specific application, whether it be wideband radar characterization, broadband satellite, or spectrum management. SignalVu Essentials (Opt. SVE) provides the fundamental capability for all measurements and is required for pulse analysis (Opt. SVP), settling time (Opt. SVT), digital modulation analysis (Opt. SVM), flexible OFDM analysis (Opt. SVO, not offered on MSO/DPO5000), and AM/FM/PM Modulation and Audio Measurements (Opt. SVA).



Wideband satellite and point-to-point microwave links can be directly observed with SignalVu analysis software. Here, General Purpose Digital Modulation Analysis (Opt. SVM) is demodulating a 16QAM backhaul link running at 312.5 MS/s.



Settling time measurements (Opt. SVT) are easy and automated. The user can select measurement bandwidth, tolerance bands, reference frequency (auto or manual), and establish up to 3 tolerance bands vs. time for Pass/Fail testing. Settling time may be referenced to external or internal trigger, and from the last settled frequency or phase. In the illustration, frequency settling time for a hopped oscillator is measured from an external trigger point from the device under test.

### WLAN transmitter testing

With the WLAN measurement options, you can perform standards-based transmitter measurements in the time, frequency, and modulation domains.

- Option SV23 supports IEEE 802.11a, b, g, j and p signals
- Option SV24 supports IEEE 802.11n 20 MHz and 40 MHz SISO signals
- Option SV25 supports IEEE 802.11ac 20/40/80/160 MHz SISO signals

The table below described the modulation formats and frequency bands of IEEE 802.11 WLAN signals

| Standard  | Std PHY      | Freq bands      | Signal                               | Modulation formats                       | Bandwidth (max)     | 802.11-2012 section |
|-----------|--------------|-----------------|--------------------------------------|--|---------------------|---------------------|
| 802.11b   | DSSS HR/DSSS | 2.4 GHz         | DSSS/CK<br>1 - 11 Mbps               | DBSK, DQPSK<br>CCK5.5M<br>CCK11M         | 20 MHz              | 16 & 17             |
| 802.11g   | ERP          | 2.4 GHz         | DSSS/CK/PBCC<br>1 - 33 Mbps          | BPSK<br>DQPSK                            | 20 MHz              | 17                  |
| 802.11a   | OFDM         | 5 GHz           | OFDM 64<br><54 Mbps                  | BPSK                                     | 20 MHz              | 18                  |
| 802.11g   |              | 2.4 GHz         |                                      | QPSK                                     | 20 MHz              | 19                  |
| 802.11j/p |              | 5 GHz           |                                      | 16QAM<br>64QAM                           | 5, 10, 20 MHz       | 18                  |
| 802.11n   | HT           | 2.4 GHz & 5 GHz | OFDM 64, 128<br>≤ 150 Mbps           | BPSK<br>QPSK<br>16QAM<br>64QAM           | 20, 40 MHz          | 20                  |
| 802.11ac  | VHT          | 5 GHz           | OFDM 64, 128, 256, 512<br>≤ 867 Mbps | BPSK<br>QPSK<br>16QAM<br>64QAM<br>256QAM | 20, 40, 80, 160 MHz | 22                  |

| IEEE 802.11 RF layer test  | IEEE reference 802.11-2012   | Limit tested   |
|----------------------------|--|--|
|                            | 19.4.8.2 ("g")<br>20.3.20.3 ("n")  |  |
| Transmit power on/off ramp | 16.4.7.8 (DSSS)<br>17.4.7.7 ("b")  | (10%-90%) 2 µsec   |
| Transmit spectrum mask     | 16.4.7.5 (DSSS)<br>17.4.7.4 ("b")<br>18.3.9.3 ("a")<br>19.5.5 ("g")<br>20.3.20.1 ("n")<br>22.3.18.1 ("ac") | Std mask   |
| RF carrier suppression     | 16.4.7.9 ("DSSS")<br>17.4.7.8 ("n")  | -15 dB   |
| Center frequency leakage   | 18.3.9.7.2 ("a")<br>20.3.20.7.2 ("n")  | -15 dBc or +2 dB w.r.t. average subcarrier power<br>20 MHz: follow 18.3.9.7.2<br>40 MHz: -20 dBc or 0 dB w.r.t. average subcarrier power |

The Frequency Band (Freq Bands) provides the minimum requirement for the bandwidth of the oscilloscope to use.

Inside SignalVu, the WLAN presets make the EVM, Constellation and SEM measurements push-button. The WLAN RF transmitter measurements are defined by the IEEE 802.11-2012 revision of the standard and listed below with the reference to the section and the limit to reach.

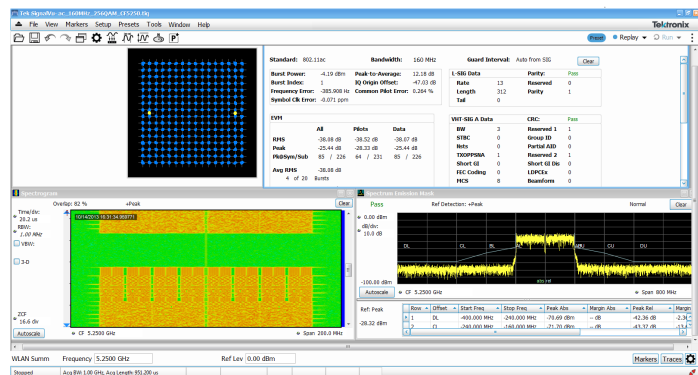
| IEEE 802.11 RF layer test | IEEE reference 802.11-2012                          | Limit tested      |
|---------------------------|---|-------------------|
| Transmit power            | 16.4.7.2 (DSSS)<br>17.4.7.2 ("b")<br>18.3.9.2 ("a") | Country dependent |

Table continued...



| IEEE 802.11 RF layer test           | IEEE reference 802.11-2012 | Limit tested   |
|-------------------------------------|----------------------------|--|
| Transmit power                      | 16.4.7.2 (DSSS)            | country dependent  |
|                                     | 17.4.7.2 ("b")             | country dependent  |
|                                     | 18.3.9.2("a")              | country dependent  |
|                                     | 19.4.8.2 ("g")             | country dependent  |
| Transmit Power On/Off Ramp          | 20.3.20.3 ("n")            | country dependent  |
|                                     | 16.4.7.8 (DSSS)            | (10%-90%) 2 usec   |
| Transmit Spectrum mask              | 17.4.7.7 ("b")             | (10%-90%) 2 usec   |
|                                     | 16.4.7.5 (DSSS)            | Std mask   |
|                                     | 17.4.7.4 ("b")             | Std mask   |
|                                     | 18.3.9.3 ("a")             | Std mask   |
|                                     | 19.5.5 ("g")               | Std mask   |
|                                     | 20.3.20.1 ("n")            | Std mask   |
| RF Carrier suppression              | 22.3.18.1 ("ac")           | Std mask   |
|                                     | 16.4.7.9 ("DSSS")          | -15dB  |
| Center frequency leakage            | 17.4.7.8 ("b")             | -15dB  |
|                                     | 18.3.9.7.2 ("a")           | -15 dBc or +2 dB w.r.t. average subcarrier power                                     |
| Transmit Spectral flatness          | 20.3.20.7.2 ("n")          | 20 MHz: follow 18.3.9.7.2<br>40 MHz: -20 dBc or 0 dB w.r.t. average subcarrier power |
|                                     | 18.3.9.7.3 ("a")           | +/- 4 dB (SC = -16...16), +/-6 dB (other)  |
| Transmission spurious               | 20.3.20.2 ("n")            | +/- 4 dB, +/-6 dB  |
|                                     | 22.3.18.2 ("ac")           | +/- 4 dB, +/-6 dB (various BWs, 20-160 MHz)  |
|                                     | 18.3.9.4 ("a")             | country dependent  |
| Transmit Center frequency tolerance | 16.4.7.6 ("DSSS")          | +/-25 ppm  |
|                                     | 17.4.7.5 ("b")             | +/-25 ppm  |
|                                     | 18.3.9.5 ("a")             | +/-20 ppm (20 MHz and 10 MHz), +/-10 ppm (5 MHz)                                     |
|                                     | 19.4.8.3 ("g")             | +/-25 ppm  |
|                                     | 20.3.20.4 ("n")            | +/-20 ppm (5 GHz band), +/-25 ppm (2.4 GHz band)                                     |
|                                     | 22.3.18.3 ("ac")           | +/-20 ppm  |
| Symbol clock frequency tolerance    | 16.4.7.7 ("DSSS")          | +/-25 ppm  |
|                                     | 17.4.7.6 ("b")             | +/-25 ppm  |
|                                     | 18.3.9.6 ("a")             | +/-20 ppm (20 MHz and 10 MHz), +/-10 ppm (5 MHz)                                     |
|                                     | 19.4.8.4 ("g")             | +/-25 ppm  |
|                                     | 20.3.20.6 ("n")            | +/-20 ppm (5 GHz band), +/-25 ppm (2.4 GHz band)                                     |
| Transmit Modulation accuracy        | 22.3.18.3 ("ac")           | +/-20 ppm  |
|                                     | 16.4.7.10 ("DSSS")         | Peak EVM < 0.35  |
|                                     | 17.4.7.9 ("b")             | Peak EVM < 0.36  |

| IEEE 802.11 WLAN transmitter test summary |                            |                   |                 |                                   |      |
|---|----------------------------|-------------------|-----------------|-----------------------------------|------|
| IEEE 802.11 RF layer test                 | IEEE reference 802.11-2012 | Limit tested      |                 |                                   |      |
| Transmitter Constellation Error           | 18.3.9.7.4 ("a")           | Modulation        | Coding rate (R) | Relative constellation error (dB) |      |
|   |                            |                   |                 |                                   | BPSK |
|   |                            | BPSK              | 3/4             | -8                                |      |
|   |                            | QPSK              | 1/2             | -10                               |      |
|   |                            | QPSK              | 3/4             | -13                               |      |
|   |                            | 16-QAM            | 1/2             | -16                               |      |
|   |                            | 16-QAM            | 3/4             | -19                               |      |
|   |                            | 64-QAM            | 2/3             | -22                               |      |
|   |                            | 64-QAM            | 3/4             | -25                               |      |
|   |                            | 20.3.20.7.3 ("n") | BPSK            | 1/2                               | -5   |
|   | QPSK                       |                   | 1/2             | -10                               |      |
|   | QPSK                       |                   | 3/4             | -13                               |      |
|   | 16-QAM                     |                   | 1/2             | -16                               |      |
|   | 16-QAM                     |                   | 3/4             | -19                               |      |
|   | 64-QAM                     |                   | 2/3             | -22                               |      |
|   | 64-QAM                     |                   | 3/4             | -25                               |      |
|   | 64-QAM                     |                   | 5/6             | -27                               |      |
|   | 22.3.18.4.3 ("ac")         |                   | BPSK            | 1/2                               | -5   |
|   |                            |                   | QPSK            | 1/2                               | -10  |
|   |                            | QPSK              | 3/4             | -13                               |      |
| 16-QAM                                    |                            | 1/2               | -16             |                                   |      |
| 16-QAM                                    |                            | 3/4               | -19             |                                   |      |
| 64-QAM                                    |                            | 2/3               | -22             |                                   |      |
| 64-QAM                                    |                            | 3/4               | -25             |                                   |      |
| 64-QAM                                    |                            | 5/6               | -27             |                                   |      |
| 256-QAM                                   |                            | 3/4               | -30             |                                   |      |
| 256-QAM                                   |                            | 5/6               | -32             |                                   |      |
| Out-of-band spurious emission             | 16.4.6.6 ("DSSS")          | country dependent |                 |                                   |      |
|   | 17.4.6.9 ("b")             | country dependent |                 |                                   |      |
|   | 18.3.8.5 ("a")             | country dependent |                 |                                   |      |
|   | 19.4.4 ("g")               | country dependent |                 |                                   |      |



Easy analysis of WLAN 802.11ac transmitter with a WLAN preset that provides spectral emission mask, constellation diagram, and decoded burst information.

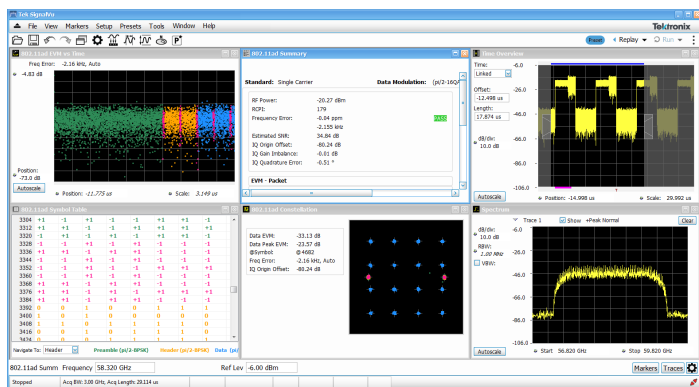
### WiGig IEEE802.11ad/ay transmitter testing

Option SV30 provides comprehensive analysis for WiGig IEEE802.11ad/ay IC characterization. Used together with the DPO77002SX, it delivers the industry's most accurate signal quality measurement at 60 GHz. Automatically detect the packet Start, as well as decode packet information in the Header; synchronize to preamble using the Golay codes in the short training field; demodulates preamble, header, and payload separately; and measures EVM in each of these sections per the standard.

SV30 provides significant margin in EVM performance compared to what is required by the standard. Channel Impulse coefficients are also available. Both Control PHY (802.11ad) and Single Carrier PHY (802.11ad and 802.11ay) are supported and this option provides analysis of 802.11ay 2.16 GHz packets or 4.23 GHz adjacent 2-channel bonded packets.

Testing and verification can be done on IF and RF setups. RF power, Received Power Indicator (RCPI), Frequency error (Max, Average, Std. Deviation), DC Offset, IQ DC origin offset, IQ Gain and Phase imbalance, Signal Quality, and estimated SNR measurements are reported in the Summary display. Pass/Fail results are reported using customizable limits and the presets make the test set-up push-button.

For further insight into the signal, color coding is available in the user interface, allowing you to visualize the EVM spread across the analyzed packet with color codes differentiating regions. You can also view the demodulated symbols in tabular form with different color codes and with an option to traverse to the start of each region for easier navigation.



DPO77002SX with SV30 provides the industry's most accurate EVM. It allows easy setup to perform transmitter measurements including time overview of the bursts, spectrum, constellation diagram, decoded burst information, and EVM measurements.

|                    |  |
|--------------------|--|
| Modulation formats | <b>802.11ad:</b> MCS0-12.6<br><b>802.11ay:</b> MCS1-21 |
|--------------------|--|

Table continued...

|              |  |
|--------------|--|
|              | <b>802.11ad/ay Single carrier:</b> $\pi/2$ BPSK, $\pi/2$ QPSK, $\pi/2$ 16QAM, $\pi/2$ 64QAM<br><b>802.11ad Control PHY:</b> $\pi/2$ DBPSK  |
| Measurements | RF output power, Received Channel Power Indicator (RCPI), Estimated SNR, Frequency Error, Symbol Rate Error, IQ Origin Offset, IQ Phase Imbalance, IQ Gain Imbalance, IQ Quadrature Error, EVM results for each packet region (STF, CEF, Header and Data). Packet information includes the Packet type, Preamble, Synchronization Word or Access Code, Packet Header, Payload length, and CRC details. |
| Displays     | Constellation, EVM vs Time, Symbol Table, Summary  |

### Residual EVM, measured at RF (Channel 1-6) on DPO77002SX <sup>1</sup>

|  | 802.11ad MCS0-12.6                 | 802.11ay MCS1-21                   |
|--|------------------------------------|------------------------------------|
| Channel 1-4                                | 1.2 - 1.6%<br>(-38.4 to -35.9 dBc) | 1.2 - 1.6%<br>(-38.4 to -35.9 dBc) |
| Channel 5-6                                | 1.4 - 2.5%<br>(-37.1 to -32.0 dBc) | 1.4 - 2.5%<br>(-37.1 to -32.0 dBc) |
| Channel 1-2, 2-3, 3-4<br>(adjacent bonded) | NA                                 | 1.2 - 1.7%<br>(-38.4 to -35.4 dBc) |
| Channel 4-5, 5-6<br>(adjacent bonded)      | NA                                 | < 2.5%<br>(< -32.0 dBc)            |

### Bluetooth transmitter testing

Two options have been added to help with Bluetooth SIG standard base transmitter RF measurements in the time, frequency and modulation domains. Option SV27 supports Basic Rate and Low

<sup>1</sup> (Measurement uncertainty:  $\pm 0.3\%$  due to pre-compensation filter and affects of the AWG70000 and upconverter.)

Energy Transmitter measurements defined by RF.TS.4.2.0 and RF-PHY.TS. 4.2.0 Test Specification. It also demodulates and provides symbol information for Enhanced Data Rate (EDR) packets. Option SV31 supports Bluetooth 5 standards (LE 1M, LE 2M, LE Coded) and measurements defined in the Core Specification. Both options also decode the physical layer data that is transmitted and color-encode the fields of packet in the Symbol Table for clear identification.

Pass/Fail results are provided with customizable limits and the Bluetooth presets make the different test set-ups push-button.

Below is a summary of the measurements that are automated with option SV27 and SV31 (unless noted):

- Bluetooth Low Energy (BLE) Transmitter Measurements
  - Output power at NOC TRM-LE/CA/01/C and at EOC TRM-LE/CA/02/C
  - In-band emission at NOC TRM-LE/CA/03/C and at EOC TRM-LE/CA/04/C
  - Modulation characteristics TRM-LE/CA/05/C
  - Carrier frequency offset and drift at NOC TRM-LE/CA/06/C and at EOC TRM-LE/CA/07/C
- Basic Rate Transmitter Measurements
  - Output power TRM/CA/01/C
  - Power Density TRM/CA/02/C (no preset)
  - Power Control TRM/CA/03/C (no preset)
  - Tx output Spectrum – Frequency Range TRM/CA/04/C (no preset)
  - Tx output spectrum - 20 dB Bandwidth TRM/CA/05/C
  - Tx output spectrum - Adjacent Channel Power TRM/CA/06/C
  - Modulation characteristics TRM/CA/07/C
  - Initial carrier frequency tolerance TRM/CA/08/C
  - Carrier frequency-drift TRM/CA/09/C

The following additional information is also available with SV27 and SV31: symbol table with color coded field information, constellation, eye diagram, frequency deviation vs time with highlighted packet and octet, frequency offset and drift detailed table, as well as packet header field decoding. Markers can be used to cross-correlate the time, vector and frequency information.



Easy validation of Bluetooth transmitter with push button preset, pass/fail information and clear correlation between displays.

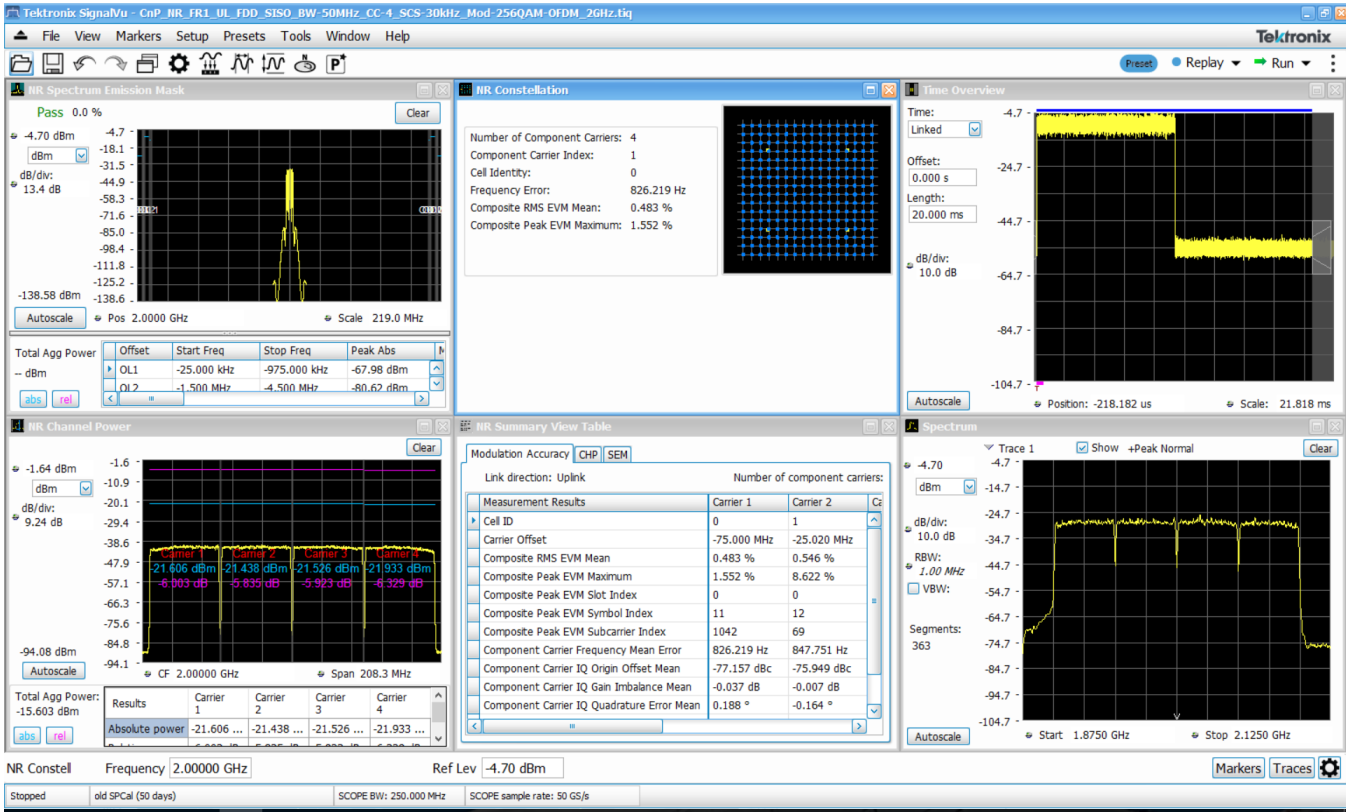
## 5G NR modulation analysis and measurements option

5G NR is among the growing set of signal standards, applications, and modulation types supported by SignalVu Vector Signal Analysis (VSA) software. The SignalVu VSA 5G NR analysis option provides comprehensive analysis capabilities in the frequency, time, and modulation domains for signals based on the 3GPP's 5G NR specification.

By configuring result traces of spectrum, acquisition time, and NR specific modulation quality (e.g, EVM, frequency error, I/Q error) traces and tables, engineers can identify overall signal characteristics and troubleshoot intermittent error peaks or repeated synchronization failures.

Error Vector Magnitude (EVM) is a figure of merit used to describe signal quality. It does this by measuring the difference on the I/Q plane between the ideal constellation point of the given symbol versus the actual measured point. It can be measured in dB or % of the ideal sub-symbol, normalized to the average QAM power received, and display constellation of symbols vs ideal symbol. The EVM vs Symbol or EVM vs Time gives the EVM of OFDM symbols present in the number of symbols considered or the time within a slot.

For automated testing, SCPI remote interfaces are available to accelerate design, which enables the quick transition to the design verification and manufacturing phases.



Constellation, Summary View, CHP, and SEM displays supported in option 5G NR

## 5G NR transmitter measurements core supported features

5G NR option (Opt. 5G NR) supports 5G NR modulation analysis measurements according to Release 15 and Release 16 of 3GPP's TS38 specification, including:

- Analysis of uplink and downlink frame structures
- 5G NR measurements and displays including
  - Modulation Accuracy (ModAcc)
  - Channel Power (CHP)
  - Adjacent Channel Power (ACP)
  - Spectrum Emission Mask (SEM)
  - Occupied Bandwidth (OBW)
  - Power Vs Time (PVT)<sup>2</sup>
  - Error Vector Magnitude (EVM)
  - Summary table with all scalar results for ModAcc, SEM, CHP, ACP, OBW, PVT, and EVM measurements
- In-depth analysis and troubleshooting with coupled measurements across domains, use multiple markers to correlate results to find root-cause.

- Saves reports in CSV format with configuration parameters and measurement results
- Configurable parameters of PDSCH or PUSCH for each component carrier
- For downlink, supported test models for FDD and TDD per 3GPP specifications

## LTE FDD and TDD base station transmitter RF testing

Option SV28 enables the following LTE measurements:

- Cell ID
- Channel Power
- Occupied Bandwidth (OBW)
- Adjacent Channel Leakage Ratio (ACLR)
- Spectrum Emission Mask (SEM)
- Transmitter Off Power for TDD
- Reference Signal Power

There are four presets to accelerate pre-compliance testing and determine the Cell ID. These presets are defined as Cell ID, ACLR, SEM, Channel Power and TDD Toff Power. The measurements follow the definition in 3GPP TS Version 12.5 and support all base station

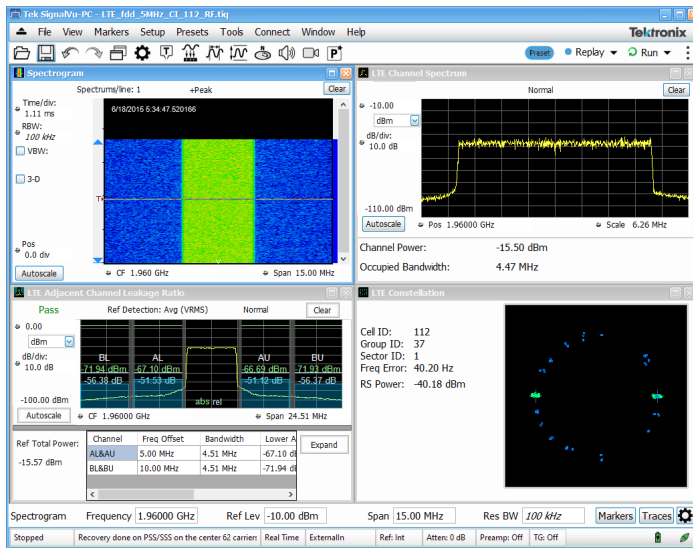
<sup>2</sup> PVT supports Uplink frame structure only.



categories, including picocells and femtocells. Pass/Fail information is reported and all channel bandwidths are supported.

The Cell ID preset displays the Primary Synchronization Signal (PSS) and the Secondary Synchronization Signal (SSS) in a Constellation diagram. It also provides Frequency Error and Reference Signal (RS) Power.

The ACLR preset measures the E-UTRA and the UTRA adjacent channels, with different chip rates for UTRA. ACLR also supports Noise Correction based on the noise measured when there is no input. Both ACLR and SEM will operate in swept mode (default) or in faster single acquisition if the instrument has enough acquisition bandwidth.



Fast validation of LTE base station transmitter with push button preset, and pass/fail information

### Measurement functions

|   |  |
|---|--|
| Spectrum analyzer measurements (Opt. SVE)           | Channel Power, Adjacent Channel Power, Multicarrier Adjacent Channel Power/Leakage Ratio, Occupied Bandwidth, xdB Down, dBm/Hz Marker, dBc/Hz Marker   |
| Time domain and statistical measurements (Opt. SVE) | RF IQ vs. Time, Amplitude vs. Time, Power vs. Time, Frequency vs. Time, Phase vs. Time, CCDF, Peak-to-Average Ratio, Amplitude, Frequency, and Phase Modulation Analysis   |
| Spur search measurements (Opt. SVE)                 | Up to 20 ranges, user-selected detectors (peak, average, CISPR peak), filters (RBW, CISPR, MIL) and VBW in each range. Linear or Log frequency scale. Measurements and violations in absolute power or relative to a carrier. Up to 999 violations identified in tabular form for export in CSV format |

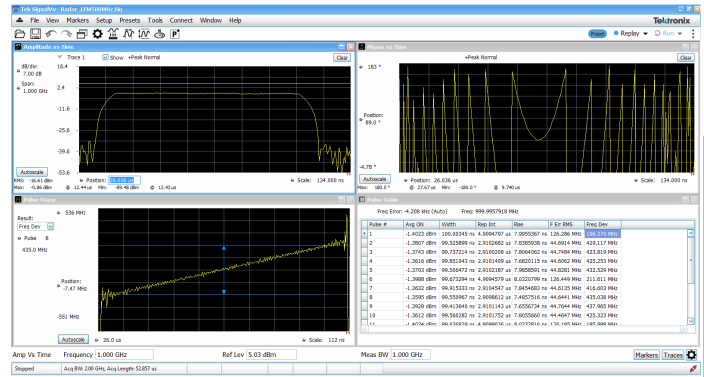
Table continued...

|  |  |
|--|--|
| WLAN 802.11a/b/g/j/p measurement application (Opt. SV23)         | All of the RF transmitter measurements as defined in the IEEE standard, and a wide range of additional scalar measurements such as Carrier Frequency error, Symbol Timing error, Average/peak burst power, IQ Origin Offset, RMS/Peak EVM, and analysis displays, such as EVM and Phase/Magnitude Error vs time/frequency or vs symbols/ subcarriers, as well as packet header decoded information and symbol table.                             |
| WLAN 802.11n measurement application (Opt. SV24)                 | Option SV23 requires Option SVE  |
| WLAN 802.11ac measurement application (Opt. SV25)                | Option SV24 requires Option SV23<br>Option SV25 requires Option SV24   |
| APCO P25 compliance testing and analysis application (Opt. SV26) | Complete set of push-button TIA-102 standard-based transmitter measurements with pass/fail results including ACPR, transmitter power and encoder attack times, transmitter throughput delay, frequency deviation, modulation fidelity, symbol rate accuracy, and transient frequency behavior, as well as HCPM transmitter logical channel peak ACPR, off slot power, power envelope, and time alignment.<br><br>Option SV26 requires Option SVE |
| Bluetooth Basic LE TX SIG measurements (Opt. SV27)               | Presets for transmitter measurements defined by Bluetooth SIG for Basic Rate and Bluetooth Low Energy. Results also include Pass/Fail information. Application also provides Packet Header Field Decoding and can automatically detect the standard including Enhanced Data Rate.  |
| LTE Downlink RF measurements (Opt. SV28)                         | Presets for Cell ID, ACLR, SEM, Channel Power and TDD Toff Power. Supports TDD and FDD frame format and all base stations defined by 3GPP TS version 12.5. Results include Pass/Fail information. Real-Time settings make the ACLR and the SEM measurements fast, if the connected instrument has enough bandwidth.  |
| 5G NR measurements (Opt. 5G NR)                                  | Presets for Channel Power (CHP), Adjacent Channel Power (ACP), Power Vs Time (PVT) <sup>2</sup> , Modulation Accuracy (including Error Vector Magnitude (EVM), Frequency Error, IQ Error), EVM vs. Symbol, Occupied Bandwidth (OBW), Spectral Emission Mask (SEM), Constellation Diagram, and summary table with scalar results.   |

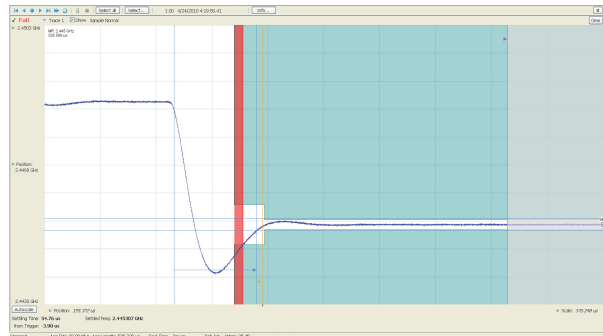
Table continued...

|   |  |
|---|--|
| <p>WiGig IEEE 802.11ad/ay measurement application (Opt. SV30)</p> | <p>Presets for Control PHY (802.11ad) and Single Carrier PHY (802.11ad and 802.11ay). The 802.11ay analysis results are shown for the EDMG, PreEDMG1, and PreEDMG2 regions. Both measure EVM in each of the packet fields per the standard, and decodes the header packet information. RF power, Received Channel Power Indicator, Frequency error, IQ DC origin offset, IQ Gain and Phase imbalance are reported in the Summary display. Pass/Fail results are reported using customizable limits.</p>  |
| <p>AM/FM/PM modulation and audio measurements (Opt. SVA)</p>      | <p>Carrier Power, Frequency Error, Modulation Frequency, Modulation Parameters (<math>\pm</math>peak, peak-peak/2, RMS), SINAD, Modulation Distortion, S/N, THD, TNHD, Hum and Noise</p>   |
| <p>Settling time (frequency and phase) (Opt. SVT)</p>             | <p>Measured Frequency, Settling Time from last settled frequency, Settling Time from last settled phase, Settling Time from Trigger. Automatic or manual reference frequency selection. User-adjustable measurement bandwidth, averaging, and smoothing. Pass/Fail Mask Testing with 3 user-settable zones</p>   |
| <p>Advanced Pulse analysis (Opt. SVP)</p>                         | <p>Pulse-Ogram™ waterfall display of multiple segmented captures, with amplitude vs time and spectrum of each pulse. Pulse frequency, Delta Frequency, Average on power, Peak power, Average transmitted power, Pulse width, Rise time, Fall time, Repetition interval (seconds), Repetition interval (Hz), Duty factor (%), Duty factor (ratio), Ripple (dB), Ripple (%), Droop (dB), Droop (%), Overshoot (dB), Overshoot (%), Pulse- Ref Pulse frequency difference, Pulse- Ref Pulse phase difference, Pulse- Pulse frequency difference, Pulse- Pulse phase difference, RMS frequency error, Max frequency error, RMS phase error, Max phase error, Frequency deviation, Phase deviation, Impulse response (dB), Impulse response (time), Time stamp.</p> |
| <p>Flexible OFDM analysis (Opt. SVO)</p>                          | <p>OFDM analysis with support for WLAN 802.11a/g/j and WiMAX 802.16-2004. Constellation, Scalar Measurement Summary, EVM or Power vs. Carrier, Symbol Table (Binary or Hexadecimal)</p>  |
| <p>General purpose digital modulation analysis (Opt. SVM)</p>     | <p>Error Vector Magnitude (EVM) (RMS, Peak, EVM vs. Time), Modulation Error Ratio (MER), Magnitude Error (RMS, Peak, Mag Error vs. Time), Phase Error (RMS, Peak, Phase Error</p>  |

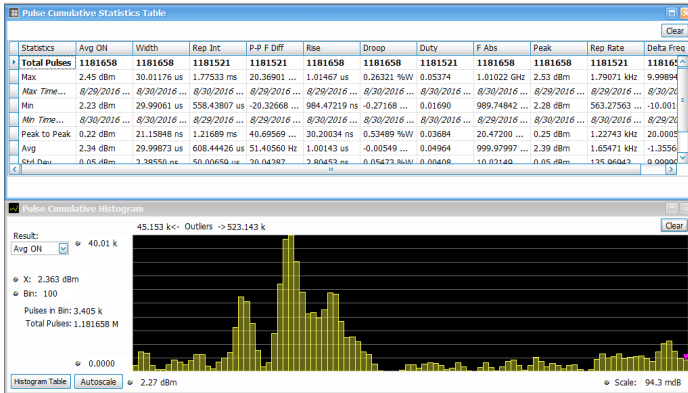
vs. Time), Origin Offset, Frequency Error, Gain Imbalance, Quadrature Error, Rho, Constellation, Symbol Table.  
 FSK only: Frequency Deviation, Symbol Timing Error



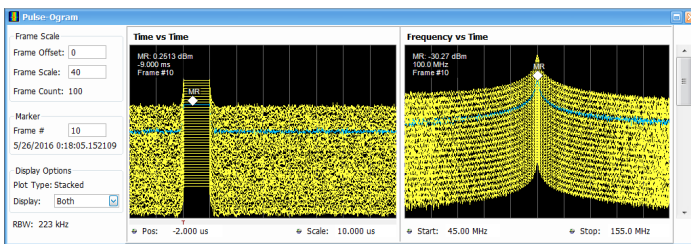
The Advanced Pulse Analysis package (Opt. SVP) provides 31 individual measurements to automatically characterize long pulse trains. An 500 MHz wide LFM chirp centered at 1 GHz is seen here with measurements for pulses 1 through 10 (lower right). The shape of the pulse can be seen in the Amplitude vs. Time plot shown in the upper left. Detailed views of pulse #8's frequency deviation and parabolic phase trajectory are shown in the other two views.



Settling time measurements (Opt. SVT) are easy and automated. The user can select measurement bandwidth, tolerance bands, reference frequency (auto or manual), and establish up to 3 tolerance bands vs. time for Pass/Fail testing. Settling time may be referenced to external or internal trigger, and from the last settled frequency or phase. In the illustration, frequency settling time for a hopped oscillator is measured from an external trigger point from the device under test.



Cumulative statistics provides timestamps for Min, Max values as well as Peak to Peak, Average and Standard deviation over multiple acquisitions, further extending the analysis. Histogram shows you outliers on the right and left.



Pulse-Ogram displays a waterfall of multiple segmented captures, with correlated amplitude vs time and spectrum of each pulse. Can be used with an external trigger to show target range and speed.

## Specifications

### Performance (typical)

The following is typical performance of SignalVu® running on any DPO70000 SX oscilloscope models, or DPO/DSA/MSO70000 Series oscilloscopes.

#### Frequency-related

|  |  |
|--|--|
| <b>Frequency range</b>                           | See appropriate instrument data sheet  |
| <b>Initial center frequency setting accuracy</b> | Equal to time-base accuracy of instrument  |
| <b>Center frequency setting resolution</b>       | 0.1 Hz   |
| <b>Frequency offset range</b>                    | 0 Hz to the maximum bandwidth of the oscilloscope  |
| <b>Frequency marker readout accuracy</b>         | $\pm(\text{Reference Frequency Error} \times \text{Marker Frequency} + 0.001 \times \text{Span} + 2) \text{ Hz}$   |
| <b>Span accuracy</b>                             | $\pm 0.3\%$  |
| <b>Reference frequency error</b>                 | Equal to oscilloscope reference frequency accuracy, aging, and drift. Refer to appropriate DPO/DSA/MSO data sheet. |

#### Tuning Tables

Tables that present frequency selection in the form of standards-based channels are available for the following.  
 Cellular standards families: AMPS, NADC, NMT-450, PDC, GSM, CDMA, CDMA-2000, 1xEV-DO WCDMA, TD-SCDMA, LTE, 5G NR, WiMax  
 Unlicensed short range: 802.11a/b/j/g/p/n/ac, Bluetooth  
 Cordless phone: DECT, PHS  
 Broadcast: AM, FM, ATSC, DVBT/H, NTSC  
 Mobile radio, pagers, other: GMRS/FRS, iDEN, FLEX, P25, PWT, SMR, WiMax

#### 3rd order inter-modulation distortion <sup>3 4</sup>

| Center frequency | MSO/DPO5000 | DPO7000 | DPO/DSA/MSO70000 | DPO70000SX |
|------------------|-------------|---------|------------------|------------|
| 2 GHz            | -38 dBc     | -40 dBc | -55 dBc          | < -60 dBc  |
| 10 GHz           | --          | --      | -48 dBc          | < -50 dBc  |
| 18 GHz           | --          | --      | -50 dBc          | < -50 dBc  |

#### Residual responses <sup>5</sup>

**DPO/DSA/MSO70000DX/SX series (all spans)** -60 dBm

<sup>3</sup> Conditions for non-SX: Each signal level -5 dBm, reference level 0 dBm, 1 MHz tone separation. Math traces off. DPO7054/7104 and MSO/DPO5034/5054/5104 performance not listed.

<sup>4</sup> Conditions for SX: 6.25 mV/div (10 mV/div for ATI), input level -26 dBm (-22 dBm for ATI channel), ~5 divisions.

<sup>5</sup> Conditions: RF input terminated, reference level 0 dBm, measurements made after specified oscilloscope warm-up and SPC calibration. Does not include zero Hz spur.



Displayed average noise level <sup>6 7</sup>

| Span               | MSO/DPO5000 | DPO7000C | DPO/DSA/MSO70000 | DPO70000SX    |
|--------------------|-------------|----------|------------------|---------------|
| DC - 500 MHz       | -94 dBm     | -100 dBm | -103 dBm         | < -145 dBm/Hz |
| >500 MHz - 3.5 GHz | -           | -102 dBm | -103 dBm         | < -155 dBm/Hz |
| >3.5 GHz - 14 GHz  | -           | -        | -101 dBm         | < -155 dBm/Hz |
| >14 GHz - 20 GHz   | -           | -        | -88 dBm          | < -155 dBm/Hz |
| >20 GHz - 25 GHz   | -           | -        | -87 dBm          | < -150 dBm/Hz |
| >25 GHz - 33 GHz   | -           | -        | -85 dBm          | < -150 dBm/Hz |
| >33 GHz - 70 GHz   | -           | -        | -                | < -150 dBm/Hz |

## Input-related

|                               |   |
|-------------------------------|---|
| Number of inputs <sup>8</sup> | 4   |
| Input signal types            | RF, I and Q (single ended), I and Q (differential)  |
| Maximum input level           | +26 dBm for 50 $\Omega$ input (5 V <sub>RMS</sub> ) |

## Trigger-related

|               |  |
|---------------|--|
| Trigger modes | Free Run and Triggered. Trigger sensitivity and characteristics can be found in the appropriate oscilloscope data sheet. |
|---------------|--|

## Acquisition-related

SignalVu provides long acquisitions of waveform captures with high time and frequency resolution. Maximum acquisition time will vary based on the oscilloscope's available memory and analog bandwidth. The following table highlights each model's single-channel capabilities given its maximum available memory configuration.

<sup>6</sup> Conditions for non-SX: RF input terminated, 10 kHz RBW, 100 averages, reference level -10 dBm, trace detection average. Measurements made after specified oscilloscope warm-up and SPC calibration.

<sup>7</sup> Conditions for SX: RF input terminated, 1 kHz RBW, averaged trace, 6.25 mV/div (10 mV/div for ATI), peak detector, 500 kHz span.

<sup>8</sup> SignalVu can process acquisitions from any one of the oscilloscope channels. Users can also apply custom math and filter functions to each of the oscilloscope's acquisition channels. The resulting Math channel can then be selected by SignalVu for signal processing.

**7000SX models**

| Model      | Max span | Oscilloscope dependent                               | SignalVu dependency        |                        | Oscilloscope dependent   |
|------------|----------|--|----------------------------|------------------------|--------------------------|
|            |          | Max acquisition time at max sample rate <sup>9</sup> | Min RBW at max sample rate | Min IQ time resolution | Max number of FastFrames |
| DPO77002SX | 70 GHz   | 5 ms   | 600 Hz                     | 20 ps SX               | 369 K                    |
| DPO75002SX | 50 GHz   |  |                            | 10 ps DX               |                          |
| DPO73304SX | 33 GHz   | 10 ms  | 300 Hz                     | 10 ps                  |                          |
| DPO72504SX | 25 GHz   |  |                            | 20 ps                  |                          |
| DPO72304SX | 23 GHz   |  |                            |                        |                          |
| DPO71604SX | 16 GHz   |  |                            |                        |                          |
| DPO71304SX | 13 GHz   |  |                            |                        |                          |

**7000D, 7000C models**

| Model <sup>10</sup> | Max span | Max acquisition time at max sample rate | Min RBW at max sample rate | Min IQ time resolution | Max number of FastFrames <sup>11</sup> |
|---------------------|----------|---|----------------------------|------------------------|--|
| DPO/DSA73304D       | 33 GHz   | 2.5 ms                                  | 1.2 kHz                    | 20 ps                  | 65,535                                 |
| DPO/DSA72504D       | 25 GHz   |   |                            |                        |  |
| DPO/DSA/MSO72004C   | 20 GHz   |   |                            |                        |  |
| DPO/DSA/MSO71604C   | 16 GHz   |   |                            |                        |  |
| DPO/DSA/MSO71254C   | 12.5 GHz |   |                            |                        |  |
| DPO/DSA/MSO70804C   | 8 GHz    | 5 ms                                    | 600 Hz                     | 80 ps                  |  |
| DPO/DSA/MSO70604C   | 6 GHz    |   |                            |                        |  |
| DPO/DSA/MSO70404C   | 4 GHz    |   |                            |                        |  |

**Analysis-related**

**Frequency (Opt. SVE)**      Spectrum (Amplitude vs. Linear or Log Frequency)  
 Spectrogram (Amplitude vs. Frequency over Time)  
 Spurious (Amplitude vs. Linear or Log Frequency)

**Time and statistics (Opt. SVE)**      Amplitude vs. Time  
 Frequency vs. Time

<sup>9</sup> On SX channels: 200GS/S real samples, 50GS/s complex samples, Oscilloscope: 70GHz Span, SignalVu 40GHz SPAN, 20pS/sample. On DX Channels: 100GS/S real samples, 100GS/S Complex Samples, Oscilloscope: 33GHz Span, SignalVu 40GHz Span, 10pS/Sample.

<sup>10</sup> With maximum available record length option and maximum sample rate.

<sup>11</sup> Maximum number of frames available will depend upon the oscilloscope's record length, sample rate, and the acquisition length settings.

|   |   |
|---|---|
|   | Phase vs. Time  |
|   | Amplitude Modulation vs. Time   |
|   | Frequency Modulation vs. Time   |
|   | Phase Modulation vs. Time   |
|   | RF IQ vs. Time  |
|   | Time Overview   |
|   | CCDF  |
|   | Peak-to-Average Ratio   |
| <b>Settling time, frequency, and phase (Opt. SVT)</b> | Frequency Settling vs. Time   |
|   | Phase Settling vs. Time   |
| <b>Advanced Pulse measurements suite (Opt. SVP)</b>   | Pulse results Table   |
|   | Pulse trace (Selectable by pulse number)  |
|   | Pulse statistics (Trend of pulse results, FFT of time trend and histogram)  |
|   | Cumulative Statistics, Cumulative Histogram and Pulse-Ogram   |
| <b>Digital demod (Opt. SVM)</b>                       | Constellation diagram   |
|   | EVM vs. Time  |
|   | Symbol table (binary or hexadecimal)  |
|   | Magnitude and Phase Error vs. Time, and Signal Quality  |
|   | Demodulated IQ vs. Time   |
|   | Eye diagram   |
|   | Trellis diagram   |
|   | Frequency Deviation vs. Time  |
| <b>Flexible OFDM (Opt. SVO)</b>                       | EVM vs. Symbol, vs. Subcarrier  |
|   | Subcarrier Power vs. Symbol, vs. Subcarrier   |
|   | Subcarrier constellation  |
|   | Symbol data table   |
|   | Mag Error vs. Symbol, vs. Subcarrier  |
|   | Phase Error vs. Symbol, vs. Subcarrier  |
|   | Channel frequency response  |
| <b>Supported file formats</b>                         | SignalVu can recall saved acquisitions from MSO/DPO5000, DPO7000, DPO/DSA/MSO70000, RSA5000, and RSA6000 Series instruments. Both WFM and TIQ file extensions can be recalled for postprocessing by SignalVu. |

## RF and spectrum analysis performance

### Resolution bandwidth

|   |   |
|---|---|
| <b>Resolution bandwidth (spectrum analysis)</b> | 1, 2, 3, 5 sequence, auto-coupled, or user selected (arbitrary)   |
| <b>Resolution bandwidth shape</b>               | Approximately Gaussian, shape factor 4.1:1 (60:3 dB) $\pm 10\%$ , typical   |
| <b>Resolution bandwidth accuracy</b>            | $\pm 1\%$ (auto-coupled RBW mode)   |
| <b>Alternative resolution bandwidth types</b>   | Kaiser window (RBW), -6 dB Mil, CISPR, Blackman-Harris 4B window, Uniform window (none), flat-top window (CW ampl.), Hanning window |

### Video bandwidth

|                              |  |
|------------------------------|--|
| <b>Video bandwidth range</b> | Dependent on oscilloscope record length setting. approximately 500 Hz to 5 MHz |
| <b>RBW/VBW maximum</b>       | 10,000:1   |
| <b>RBW/VBW minimum</b>       | 1:1  |

|                           |                     |
|---------------------------|---------------------|
| <b>Resolution</b>         | 5% of entered value |
| <b>Accuracy (typical)</b> | ±10%                |

---

#### Time domain bandwidth (amplitude vs. time display)

|                                       |   |
|---------------------------------------|---|
| <b>Time domain bandwidth range</b>    | At least 1/2 to 1/10,000 of acquisition bandwidth   |
| <b>Time domain bandwidth shape</b>    | Approximately Gaussian, shape factor 4.1:1(60:3 dB), ±10% typical<br>Shape factor <2.5:1 (60:3 dB) typical for all bandwidths |
| <b>Time domain bandwidth accuracy</b> | ±10%  |

---

#### Spectrum and Spurious display traces, detectors, and functions

|                              |   |
|------------------------------|---|
| <b>Traces</b>                | Three traces + 1 math trace + 1 trace from spectrogram for spectrum display, four traces for spurious display   |
| <b>Detector</b>              | Peak, –peak, average, CISPR peak, and when option SVQP is enabled, CISPR quasi-peak and average (not available when connected to MDO4000B/C or MSO5/6 Series) |
| <b>Trace functions</b>       | Normal, Average, Max Hold, Min Hold   |
| <b>Spectrum trace length</b> | 801, 2401, 4001, 8001, 10401, 16001, 32001, or 64001 points   |

---

### AM/FM/PM modulation and audio measurements (SVA)

All published performance based on conditions of Input Signal: 0 dBm, Input Frequency: 100 MHz, RBW: Auto, Averaging: Off, Filters: Off. Sampling and input parameters optimized for best results.

|   |  |
|---|--|
| <b>Carrier frequency range<sup>12</sup></b> | 1 kHz or (1/2 × audio analysis bandwidth) to maximum input frequency |
| <b>Maximum audio frequency span</b>         | 10 MHz   |

---

#### Audio filters

|                         |   |
|-------------------------|---|
| <b>Low pass (kHz)</b>   | 0.3, 3, 15, 30, 80, 300, and user-entered up to 0.9 × audio bandwidth             |
| <b>High pass (Hz)</b>   | 20, 50, 300, 400, and user-entered up to 0.9 × audio bandwidth                    |
| <b>Standard</b>         | CCITT, C-Message  |
| <b>De-emphasis (µs)</b> | 25, 50, 75, 750, and user-entered   |
| <b>File</b>             | User-supplied .TXT or .CSV file of amplitude/frequency pairs. Maximum 1000 pairs. |

---

#### FM modulation analysis

|                                   |   |
|-----------------------------------|---|
| <b>FM measurements,</b>           | Carrier power, carrier frequency error, audio frequency, deviation (+peak, –peak, peak-peak/2, RMS), SINAD, modulation distortion, S/N, total harmonic distortion, total non-harmonic distortion, hum and noise |
| <b>FM deviation accuracy</b>      | ±1.5% of deviation  |
| <b>FM rate accuracy</b>           | ±1.0 Hz   |
| <b>Carrier frequency accuracy</b> | ±1 Hz + (transmitter frequency × reference frequency error)   |

---

#### Residuals (FM) (rate: 1 kHz to 10 kHz, deviation: 5 kHz)

---

<sup>12</sup> Sampling rates of the oscilloscope are recommended to be adjusted to no more than 10X the audio carrier frequency for modulated signals, and 10X the audio analysis bandwidth for direct input audio. This reduces the length of acquisition required for narrow-band audio analysis.



|              |                         |
|--------------|-------------------------|
| <b>THD</b>   | 0.2% (DPO70000 Series)  |
| <b>SINAD</b> | 44 dB (DPO70000 Series) |

---

**AM modulation analysis**

|  |   |
|--|---|
| <b>AM measurements</b>                             | Carrier power, audio frequency, modulation depth (+peak, –peak, peak-peak/2), RMS, SINAD, modulation distortion, S/N, total harmonic distortion, total non-harmonic distortion, hum and noise |
| <b>AM depth accuracy (rate: 1 kHz, depth: 50%)</b> | $\pm 1\% + 0.01 \times \text{measured value}$   |
| <b>AM rate accuracy (rate: 1 kHz, depth: 50%)</b>  | $\pm 1.0 \text{ Hz}$  |

---

**Residuals (AM)**

|              |                         |
|--------------|-------------------------|
| <b>THD</b>   | 0.3% (DPO70000 Series)  |
| <b>SINAD</b> | 48 dB (DPO70000 Series) |

---

**PM modulation analysis**

|  |   |
|--|---|
| <b>PM measurement</b>  | Carrier power, carrier frequency error, audio frequency, deviation (+peak, –peak, peak-peak/2, RMS), SINAD, modulation distortion, S/N, total harmonic distortion, total non-harmonic distortion, hum and noise |
| <b>PM deviation accuracy (rate: 1 kHz, deviation: 0.628 rad)</b> | $\pm 100\% \times (0.01 + (\text{rate} / 1 \text{ MHz}))$   |
| <b>PM rate accuracy (rate: 1 kHz, deviation: 0.628 rad)</b>      | $\pm 1 \text{ Hz}$  |

---

**Residuals (PM)**

|              |                         |
|--------------|-------------------------|
| <b>THD</b>   | 0.1% (DPO70000 Series)  |
| <b>SINAD</b> | 48 dB (DPO70000 Series) |

---

**Direct audio input**

|   |  |
|---|--|
| <b>Audio measurements</b>   | Signal power, audio frequency (+peak, –peak, peak-peak/2, RMS), SINAD, modulation distortion, S/N, total harmonic distortion, total non-harmonic distortion, hum and noise |
| <b>Direct input frequency range (for audio measurements only)</b> | 1 Hz to 10 MHz   |
| <b>Maximum audio frequency span</b>                               | 10 MHz   |
| <b>Audio frequency accuracy</b>                                   | $\pm 1 \text{ Hz}$   |

---

**Residuals (PM)**

|              |       |
|--------------|-------|
| <b>THD</b>   | 1.5%  |
| <b>SINAD</b> | 38 dB |

Minimum audio analysis  
bandwidth and RBW vs.  
oscilloscope memory and  
sample rate  
(Opt. SVA)

| Model                                       | Sample rate: 1 GS/s |               |                 |               | Sample rate: maximum |               |                 |               |
|---|---------------------|---------------|-----------------|---------------|----------------------|---------------|-----------------|---------------|
|   | Standard memory     |               | Maximum memory  |               | Standard memory      |               | Maximum memory  |               |
|   | Min. Aud.<br>BW     | RBW<br>(Auto) | Min. Aud.<br>BW | RBW<br>(Auto) | Min. Aud.<br>BW      | RBW<br>(Auto) | Min. Aud.<br>BW | RBW<br>(Auto) |
| DPO/DSA/<br>MSO<br>70000<br>≥12.5 GHz<br>BW | 200 kHz             | 400 Hz        | 10 kHz          | 20 Hz         | not recom-<br>mended | >4 kHz        | 1 MHz           | 2 kHz         |
| DPO/DSA/<br>MSO<br>70000<br><12.5 GHz<br>BW | 200 kHz             | 400 Hz        | 20 kHz          | 40 Hz         | not recom-<br>mended | >4 kHz        | 500 kHz         | 1 kHz         |

## Settling time, frequency, and phase (SVT)

### Settled frequency uncertainty<sup>13</sup>

Measurement frequency: 1 GHz

| Averages           | Frequency uncertainty at stated measurement bandwidth |         |        |        |
|--------------------|---|---------|--------|--------|
|                    | 1 GHz   | 100 MHz | 10 MHz | 1 MHz  |
| Single measurement | 20 kHz  | 2 kHz   | 500 Hz | 100 Hz |
| 100 averages       | 10 kHz  | 500 Hz  | 200 Hz | 50 Hz  |
| 1000 averages      | 2 kHz   | 200 Hz  | 50 Hz  | 10 Hz  |

Measurement frequency: 9 GHz

| Averages           | Frequency uncertainty at stated measurement bandwidth |         |        |        |
|--------------------|---|---------|--------|--------|
|                    | 1 GHz   | 100 MHz | 10 MHz | 1 MHz  |
| Single Measurement | 20 kHz  | 5 kHz   | 2 kHz  | 200 Hz |
| 100 Averages       | 10 kHz  | 2 kHz   | 500 Hz | 50 Hz  |
| 1000 Averages      | 2 kHz   | 500 Hz  | 200 Hz | 20 Hz  |

### Settled phase uncertainty<sup>13</sup>

Measurement frequency: 1 GHz

| Averages           | Phase uncertainty at stated measurement bandwidth |         |        |       |
|--------------------|---|---------|--------|-------|
|                    | 1 GHz   | 100 MHz | 10 MHz | 1 MHz |
| Single measurement | 2°  | 2°      | 2°     | 2°    |
| 100 averages       | 0.5°  | 0.5°    | 0.5°   | 0.5°  |
| 1000 averages      | 0.2°  | 0.2°    | 0.2°   | 0.2°  |

Measurement frequency: 9 GHz

| Averages           | Phase uncertainty at stated measurement bandwidth |         |        |       |
|--------------------|---|---------|--------|-------|
|                    | 1 GHz   | 100 MHz | 10 MHz | 1 MHz |
| Single measurement | 5°  | 5°      | 5°     | 5°    |
| 100 averages       | 2°  | 2°      | 2°     | 2°    |
| 1000 averages      | 0.5°  | 0.5°    | 0.5°   | 0.5°  |

## Advanced Pulse measurement suite (Opt. SVP)

### General characteristics

#### Measurements

Pulse-Ogram™ waterfall display of multiple segmented captures, with amplitude vs time and spectrum of each pulse. Pulse frequency, Delta Frequency, Average on power, Peak power, Average transmitted power, Pulse width, Rise time, Fall time, Repetition interval (seconds), Repetition interval (Hz), Duty factor (%), Duty factor (ratio), Ripple (dB), Ripple (%), Droop (dB), Droop (%), Overshoot (dB), Overshoot (%), Pulse- Ref Pulse frequency difference, Pulse- Ref Pulse phase difference, Pulse- Pulse frequency difference, Pulse- Pulse phase difference, RMS frequency error, Max frequency error, RMS phase error, Max phase error, Frequency deviation, Phase deviation, Impulse response (dB), Impulse response (time), Time stamp.

<sup>13</sup> Settled Frequency or Phase at the measurement frequency. Measured signal level > -20 dBm, Attenuator: Auto.

|                                   |  |
|-----------------------------------|--|
| <b>Number of pulses</b>           | 1 to 100,000 <sup>14</sup> in one acquisition; Supports offline analysis of more than 200,000 continuous pulses. Provides measurement statistics for millions of pulses captured over many acquisitions. |
| <b>System rise time (typical)</b> | Equal to oscilloscope rise time  |

**Minimum pulse width for detection** <sup>15</sup>

| Model                     | Minimum PW |
|---------------------------|------------|
| DPO/DSA72004C<br>MSO72004 | 400 ps     |
| DPO/DSA71604C<br>MSO71604 | 500 ps     |
| DPO/DSA71254C<br>MSO71254 | 640 ps     |
| DPO/DSA70804C<br>MSO70804 | 1 ns       |
| DPO/DSA70604C<br>MSO70604 | 1.3 ns     |
| DPO/DSA70404C<br>MSO70404 | 2 ns       |
| DPO77002SX                | 40 ps      |
| DPO75002SX                | 40 ps      |
| DPO73304SX                | 40 ps      |
| DPO72504SX                | 40 ps      |
| DPO72304SX                | 40 ps      |
| DPO71604SX                | 40 ps      |
| DPO71304SX                | 40 ps      |

**Pulse measurement accuracy (typical)** <sup>16</sup>

|                                  |  |
|----------------------------------|--|
| <b>Average on power</b>          | $\pm 0.3$ dB + Absolute Amplitude Accuracy of instrument |
| <b>Average transmitted power</b> | $\pm 0.4$ dB + Absolute Amplitude Accuracy of instrument |
| <b>Peak power</b>                | $\pm 0.4$ dB + Absolute Amplitude Accuracy of instrument |
| <b>Pulse width</b>               | $\pm(3\%$ of reading + $0.5 \times$ sample period)       |
| <b>Pulse repetition rate</b>     | $\pm(3\%$ of reading + $0.5 \times$ sample period)       |

<sup>14</sup> Actual number depends on time length, pulse bandwidth and instrument configuration.

<sup>15</sup> Conditions: Approximately equal to 10/(IQ sampling rate). IQ sampling rate is the final sample rate after frequency domain processing from the oscilloscope. Pulse measurement filter set to max bandwidth.

<sup>16</sup> Conditions: Pulse Width > 450 ns, S/N Ratio  $\geq 30$  dB, Duty Cycle 0.5 to 0.001, Temperature 18 °C to 28 °C.



## Digital modulation analysis (SVM)

|                            |  |
|----------------------------|--|
| <b>Modulation formats</b>  | $\pi/2$ DBPSK, BPSK, SBPSK, QPSK, DQPSK, $\pi/4$ DQPSK, D8PSK, 8PSK, OQPSK, SOQPSK, CPM, 16/32/64/128/256QAM, MSK, GMSK, GFSK, 2-FSK, 4-FSK, 8-FSK, 16-FSK, C4FM, D16PSK, 16APSK, and 32APSK                               |
| <b>Analysis period</b>     | Up to 80,000 samples   |
| <b>Measurement filters</b> | Square-root raised cosine, raised cosine, Gaussian, rectangular, IS-95, IS-95 EQ, C4FM-P25, half-sine, None, User Defined  |
| <b>Reference filters</b>   | Raised cosine, Gaussian, rectangular, IS-95, SBPSK-MIL, SOQPSK-MIL, SOQPSK-ARTM, None, User Defined  |
| <b>Alpha/B x T range</b>   | 0.001 to 1, 0.001 step   |
| <b>Measurements</b>        | Constellation, Error Vector Magnitude (EVM) vs time, Modulation error ratio (MER), Magnitude error vs time, Phase error vs time, Signal quality, Symbol table<br><br>rhoFSK only: Frequency deviation, Symbol timing error |
| <b>Symbol rate range</b>   | 1 kS/s to (0.4 * Sample Rate) GS/s (modulated signal must be contained entirely within the acquisition bandwidth)  |

### Adaptive equalizer

|  |   |
|--|---|
| <b>Type</b>  | Linear, decision-directed, feed-forward (FIR) equalizer with coefficient adaptation and adjustable convergence rate |
| <b>Modulation types supported</b>                              | BPSK, QPSK, OQPSK $\pi/2$ DQPSK, $\pi/4$ DQPSK, 8PSK, D8PSK, D16PSK, 16/32/64/128/256QAM                            |
| <b>Reference filters for all modulation types except OQPSK</b> | Raised cosine, Rectangular, None  |
| <b>Reference filters for OQPSK</b>                             | Raised cosine, Half sine  |
| <b>Filter length</b>   | 1-128 taps  |
| <b>Taps/symbol: raised cosine, half sine, no filter</b>        | 1, 2, 4, 8  |
| <b>Taps/symbol: rectangular filter</b>                         | 1   |
| <b>Equalizer controls</b>                                      | Off, Train, Hold, Reset   |

### 16QAM Residual EVM (typical) for DPO/DSA/MSO70000 series <sup>17</sup>

| Symbol Rate | RF    | IQ    |
|-------------|-------|-------|
| 100 MS/s    | <2.0% | <2.0% |
| 312.5 MS/s  | <3.0% | <3.0% |

### OFDM residual EVM, 802.11g Signal at 2.4 GHz, input level optimized for best performance

DPO/DSA/MSO70000 Series -38 dB

<sup>17</sup> CF = 1 GHz, Measurement Filter = root raised cosine, Reference Filter = raised cosine, Analysis Length = 200 symbols.

---

**WLAN IEEE802.11a/b/g/j/p (Opt. SV23)****General characteristics**

**Modulation formats** DBPSK (DSSS1M), DQPSK (DSSS2M), CCK5.5M, CCK11M, OFDM (BPSK, QPSK, 16 or 64QAM)

**Measurements** RMS and Peak EVM for Pilots/Data, Peak EVM located per symbol and subcarrier

Packet header format information

Average power and RMS EVM per section of the header

WLAN power vs time, WLAN symbol table, WLAN constellation

Spectrum Emission Mask, Spurious

Error Vector Magnitude (EVM) vs symbol (or time), vs subcarrier (or frequency)

Mag error vs symbol (or time), vs subcarrier (or frequency)

Phase error vs symbol (or time), vs subcarrier (or frequency)

WLAN channel frequency response vs symbol (or time), vs subcarrier (or frequency)

WLAN spectral flatness vs symbol (or time), vs subcarrier (or frequency)

---

**WLAN IEEE802.11n (Opt. SV24)****General characteristics**

**Modulation formats** OFDM (BPSK, QPSK, 16 or 64 QAM), SISO

**Measurements** Burst index, Burst power, Peak to average burst power, IQ origin offset, Frequency error, Common pilot error, Symbol clock error

RMS and peak EVM for Pilots/Data, peak EVM located per symbol and subcarrier

Packet header format information

Average power and RMS EVM per section of the header

WLAN power vs time, WLAN symbol table, WLAN constellation

Spectrum emission mask, spurious

Error Vector Magnitude (EVM) vs symbol (or time), vs subcarrier (or frequency)

Mag error vs symbol (or time), vs subcarrier (or frequency)

Phase error vs symbol (or time), vs subcarrier (or frequency)

WLAN channel frequency response vs symbol (or time), vs subcarrier (or frequency)

WLAN spectral flatness vs symbol (or time), vs subcarrier (or frequency)

---

**WLAN IEEE802.11ac (Opt. SV25)****General characteristics**

**Modulation formats** OFDM (BPSK, QPSK, 16 QAM, 64 QAM, 256 QAM), SISO

---

**Measurements**

- Burst index, Burst power, Peak to average burst power, IQ origin offset, Frequency error, Common pilot error, Symbol clock error
- RMS and peak EVM for Pilots/Data, Peak EVM located per symbol and subcarrier
- Packet header format information
- Average power and RMS EVM per section of the header
- WLAN Power vs time, WLAN symbol table, WLAN constellation
- Spectrum emission mask, spurious
- Error Vector Magnitude (EVM) vs symbol (or time), vs subcarrier (or frequency)
- Mag error vs symbol (or time), vs subcarrier (or frequency)
- Phase error vs symbol (or time), vs subcarrier (or frequency)
- WLAN channel frequency response vs symbol (or time), vs subcarrier (or frequency)
- WLAN spectral flatness vs symbol (or time), vs subcarrier (or frequency)

**WiGig 802.11ad/ay (Opt. SV30)**

- Modulation formats**
- 802.11ad MCS0-12.6,
  - 802.11ay MCS1-21
  - 802.11ad Control PHY (pi/2 DBPSK)
  - 802.11ad and 802.11ay Single Carrier PHY (pi/2 BPSK, pi/2 QPSK, pi/2 16QAM, pi/2 64QAM)

**Measurements and displays**

RF output power, Received Channel Power Indicator (RCPI), Estimated SNR, Frequency Error, Symbol Rate Error, IQ Origin Offset, IQ Gain Imbalance, IQ Phase Imbalance, IQ Quadrature Error,

EVM results for each packet region: Packet information, 802.11ad (STF, CEF, Header, Guard, and Data), 802.11ay (LSTF, LCEF, L Header, EDMG Header-A, EDMG STF, EDMG CEF Guard and Data

include the Packet type, Preamble, Synchronization Word or Access Code, Packet Header, Payload length, and CRC details.

**Residual EVM, measured at RF (Channel 1-6) on DPO770002SX**

**Residual EVM**

Measurement uncertainty:  $\pm 0.3\%$  due to pre-compensation filter and affects of the AWG70000 and upconverter.

|             | 802.11ad MCS0-12.6                 | 802.11ay MCS1-21                   |
|-------------|------------------------------------|------------------------------------|
| Channel 1-4 | 1.2 - 1.6%<br>(-38.4 to -35.9 dBc) | 1.2 - 1.6%<br>(-38.4 to -35.9 dBc) |
| Channel 5-6 | 1.4 - 2.5%<br>(-37.1 to -32.0 dBc) | 1.4 - 2.5%<br>(-37.1 to -32.0 dBc) |

Table continued...

|  |    |                                    |
|--|----|------------------------------------|
| Channel 1-2, 2-3, 3-4<br>(adjacent bonded) | NA | 1.2 - 1.7%<br>(-38.4 to -35.4 dBc) |
| Channel 4-5, 5-6<br>(adjacent bonded)      | NA | < 2.5%<br>(< -32.0 dBc)            |

## APCO P25 (Opt. SV26)

**Modulation formats** Phase 1 (C4FM), Phase 2 (HCPM, HDQPSK)

**Measurements and displays** RF output power, operating frequency accuracy, modulation emission spectrum, unwanted emissions spurious, adjacent channel power ratio, frequency deviation, modulation fidelity, frequency error, eye diagram, symbol table, symbol rate accuracy, transmitter power and encoder attack time, transmitter throughput delay, frequency deviation vs. time, power vs. time, transient frequency behavior, HCPM transmitter logical channel peak adjacent channel power ratio, HCPM transmitter logical channel off slot power, HCPM transmitter logical channel power envelope, HCPM transmitter logical channel time alignment

## Bluetooth (Opt. SV27)

**Modulation formats** Bluetooth® 4.2 Basic Rate, Bluetooth® 4.2 Low Energy, Bluetooth® 4.2 Enhanced Data Rate. Bluetooth® 5 when SV31 is enabled.

**Measurements and displays** Peak Power, Average Power, Adjacent Channel Power or InBand Emission mask, -20 dB Bandwidth, Frequency Error, Modulation Characteristics including  $\Delta F1_{avg}$  (11110000),  $\Delta F2_{avg}$  (10101010),  $\Delta F2 > 115$  kHz,  $\Delta F2/\Delta F1$  ratio, frequency deviation vs. time with packet and octet level measurement information, Carrier Frequency  $f_0$ , Frequency Offset (Preamble and Payload), Max Frequency Offset, Frequency Drift  $f_1-f_0$ , Max Drift Rate  $f_n-f_0$  and  $f_n-f_{n-5}$ , Center Frequency Offset Table and Frequency Drift table, color-coded Symbol table, Packet header decoding information, eye diagram, constellation diagram.

## LTE Downlink (Opt. SV28)

**Standard Supported** 3GPP TS 36.141 Version 12.5

**Frame Format supported** FDD and TDD

**Measurements and Displays Supported** Adjacent Channel Leakage Ratio (ACLR), Spectrum Emission Mask (SEM), Channel Power, Occupied Bandwidth, Power vs. Time showing Transmitter OFF power for TDD signals and LTE constellation diagram for PSS, SSS with Cell ID, Group ID, Sector ID and Frequency Error.

---

## 5G NR Uplink/Downlink measurements (Opt. 5GNR)

|  |  |       |       |       |       |       |       |
|--|--|-------|-------|-------|-------|-------|-------|
| <b>Standard supported</b>                  | TS 38.141-1 for BS and 38.521-1 for UE   |       |       |       |       |       |       |
| <b>Modulation accuracy</b>                 | Sec 6.5.2 for BS and Sec 6.4.2 for UE.   |       |       |       |       |       |       |
| <b>ACP</b>                                 | Sec 6.6.3 for BS and Sec 6.5.2.4 for UE  |       |       |       |       |       |       |
| <b>Frame format supported</b>              | Uplink (FDD and TDD)<br>Downlink (FDD and TDD)   |       |       |       |       |       |       |
| <b>Measurements and displays supported</b> | Channel Power (CHP), Adjacent Channel Power (ACP), Power Vs Time (PVT) <sup>2</sup> , Modulation Accuracy (including Error Vector Magnitude (EVM), Frequency Error, IQ Error), EVM vs. Symbol, Occupied Bandwidth (OBW), Spectral Emission Mask (SEM), Constellation Diagram, and summary table with scalar results. |       |       |       |       |       |       |
| <b>EVM (typical)</b>                       | 1 GHz  | 2 GHz | 3 GHz | 4 GHz | 5 GHz | 6 GHz | 7 GHz |
|  | 0.50%  | 0.50% | 0.70% | 0.70% | 0.70% | 0.90% | 0.90% |
| <b>ACLR</b>                                | -48 dBc at all frequencies up to 7 GHz   |       |       |       |       |       |       |

---

## General characteristics

|             |   |
|-------------|---|
| <b>GPIB</b> | SCPI-compatible, see programmer manual for exceptions |
|-------------|---|

---

## Ordering information

SignalVu® Vector Signal Analysis software is compatible with DPO/DSA/MSO70000 Series digital oscilloscopes with firmware version V5.1.0 or higher. SignalVu Essentials (Opt. SVE) provides basic vector signal analysis and is required for all other analysis options.

### Options

|           |  |
|-----------|--|
| Opt. SVE  | SignalVu Essentials - Vector Signal Analysis Software  |
| Opt. SV23 | WLAN 802.11a/b/g/j/p measurement application (requires Opt. SVE, requires oscilloscope of bandwidth of 2.5 GHz or above)                 |
| Opt. SV24 | WLAN 802.11n measurement application (requires Opt. SV23, requires oscilloscope of bandwidth of 2.5 GHz or above)                        |
| Opt. SV25 | WLAN 802.11ac measurement application (requires Opt. SV24, requires oscilloscope of bandwidth of 6.0 GHz or above)                       |
| Opt. SV26 | APCO P25 measurement application   |
| Opt. SV27 | Bluetooth Basic LE Tx Measurements (requires Opt. SVE, requires oscilloscope of bandwidth of 2.5 GHz or above)                           |
| Opt. SV28 | LTE Downlink RF measurements (requires Opt. SVE, requires oscilloscope of bandwidth 1 GHz or above). Not available on DPO/MSO5000 Series |
| Opt. 5GNR | 5G NR Uplink/Downlink RF analysis software (Available as upgrade only. Requires Opt. SVE)  |
| Opt. SV30 | IEEE802.11ad/ay SC Wideband Waveform Analysis (requires Opt. SVE, requires oscilloscope of bandwidth >3 GHz)                             |
| Opt. SVP  | Advanced Signal Analysis, including pulse measurements (requires Opt. SVE)   |
| Opt. SVM  | General Purpose Digital Modulation Analysis (requires Opt. SVE)  |
| Opt. SVT  | Settling Time, Frequency, and Phase (requires Opt. SVE)  |
| Opt. SVO  | Flexible OFDM with support for 802.11a/j/g and 802.16-2044 (fixed WiMAX) modulation types.   |
| Opt. SVA  | AM/FM/PM Modulation and Audio Measurements (requires Opt. SVE)   |

## SignalVu ordering and upgrade guide for new and existing instruments

Option ordering nomenclature for all oscilloscopes. Option SVE is required for all other options listed.

For information on analysis software that runs on your personal computer, please see the SignalVu-PC datasheet.

### New and existing models

| Model  | Ordering on new instrument        | Upgrade existing instrument |
|--|-----------------------------------|-----------------------------|
| DPO/DSA/MSO70000 Series ≤8 GHz                   | Opt. SVE (Essentials)             | DPO-UP Opt. SVEH            |
| DPO/DSA/MSO70000 Series >8 GHz                   | Opt. SVE (Essentials)             | DPO-UP Opt. SVEU            |
| Option SVE required for all other options listed | Opt. SVT (Settling time)          | DPO-UP Opt. SVT             |
|  | Opt. SVP (Pulse measurements)     | DPO-UP Opt. SVP             |
|  | Opt. SVM (GP modulation analysis) | DPO-UP Opt. SVM             |
|  | Opt. SVO (OFDM)                   | DPO-UP Opt. SVO             |
|  | Opt. SVA (AM/FM/PM Audio)         | DPO-UP Opt. SVA             |
|  | Opt. SV26 (APCO P25)              | DPO-UP Opt. SV26            |
| DPO/DSA/MSO70000 Series ≥2.5 GHz                 | Opt. SV23 (IEEE802.11a/b/g/j/p)   | DPO-UP Opt. SV23            |
| Option SV23 required for SV24                    | Opt. SV24 (IEEE802.11n)           | DPO-UP Opt. SV24            |
| Option SV24 required for SV25                    | Opt. SV25 (IEEE802.11ac)          | DPO-UP Opt. SV25            |
| Table continued...                               |                                   |                             |

| Model                                  | Ordering on new instrument   | Upgrade existing instrument    |
|--|------------------------------|--------------------------------|
| DPO/DSA/MSO70000 Series $\geq 2.5$ GHz | Opt. SV27 (Bluetooth)        | DPO-UP Opt. SV27               |
| DPO/DSA/MSO70000 Series $\geq 1$ GHz   | Opt. SV28 (LTE Downlink)     | DPO-UP Opt. SV28               |
| DPO70000 SX Series only                | Opt. SV30 (IEEE 802.11ad/ay) | DPO-UP Opt. SV30               |
| DPO70000 SX Series only                |                              | DPO-UP Opt. 5GNR <sup>18</sup> |

### Legacy models

#### DPO7000 Series, DPO/DSA/ MSO70000 Series

Earlier DPO/DSA/MSO70000 Series oscilloscopes may be retrofitted with SignalVu. These instruments use a Microsoft Windows XP operating system, have oscilloscope firmware version 5.1 or above, and are compatible with SignalVu version 2.3.0072. See upgrade nomenclature table above for ordering information. Option SVO (OFDM), Option SVA (AM/FM/PM Audio), and Options SV23, SV23, SV25, SV26, SV27, SV28, SV30 (WLAN, Bluetooth, WiGig, LTE and P25) are not available on instruments with Microsoft Windows XP.

5GNR Analysis is not supported on Windows 8/8.1, Window 7, and Windows XP.

### Bluetooth®

Bluetooth is a registered trademark of Bluetooth SIG, Inc.



LTE is a trademark of ETSI.

<sup>18</sup> The 5GNR license is available as a standalone item, not as an option to your hardware, therefore it is considered a post-purchase upgrade and not installed at the time of purchase of the instrument.

ASEAN / Australasia (65) 6356 3900  
 Belgium 00800 2255 4835\*  
 Central East Europe and the Baltics +41 52 675 3777  
 Finland +41 52 675 3777  
 Hong Kong 400 820 5835  
 Japan 81 (120) 441 046  
 Middle East, Asia, and North Africa +41 52 675 3777  
 People's Republic of China 400 820 5835  
 Republic of Korea +822 6917 5084, 822 6917 5080  
 Spain 00800 2255 4835\*  
 Taiwan 886 (2) 2656 6688

Austria 00800 2255 4835\*  
 Brazil +55 (11) 3759 7627  
 Central Europe & Greece +41 52 675 3777  
 France 00800 2255 4835\*  
 India 000 800 650 1835  
 Luxembourg +41 52 675 3777  
 The Netherlands 00800 2255 4835\*  
 Poland +41 52 675 3777  
 Russia & CIS +7 (495) 6647564  
 Sweden 00800 2255 4835\*  
 United Kingdom & Ireland 00800 2255 4835\*

Balkans, Israel, South Africa and other ISE Countries +41 52 675 3777  
 Canada 1 800 833 9200  
 Denmark +45 80 88 1401  
 Germany 00800 2255 4835\*  
 Italy 00800 2255 4835\*  
 Mexico, Central/South America & Caribbean 52 (55) 56 04 50 90  
 Norway 800 16098  
 Portugal 80 08 12370  
 South Africa +41 52 675 3777  
 Switzerland 00800 2255 4835\*  
 USA 1 800 833 9200

\* European toll-free number. If not accessible, call: +41 52 675 3777

**For Further Information.** Tektronix maintains a comprehensive, constantly expanding collection of application notes, technical briefs and other resources to help engineers working on the cutting edge of technology. Please visit [www.tek.com](http://www.tek.com).

Copyright © Tektronix, Inc. All rights reserved. Tektronix products are covered by U.S. and foreign patents, issued and pending. Information in this publication supersedes that in all previously published material. Specification and price change privileges reserved. TEKTRONIX and TEK are registered trademarks of Tektronix, Inc. All other trade names referenced are the service marks, trademarks, or registered trademarks of their respective companies.