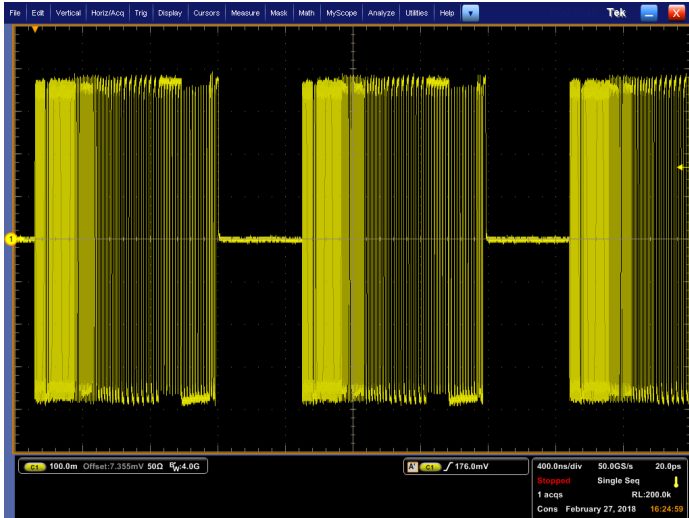


# USB 2.0 Application Software

## USB 2.0 Decoding, Triggering, and Compliance Testing Software



These applications provide comprehensive, integrated tools for engineers designing USB-based embedded systems and validating the physical-layer compliance to the USB 2.0 standards. The applications are supported on the DPO/DSA/MSO7000C/D/DX/SX, DPO7000C, 5 Series MSO, MSO/DPO5000, MDO4000, and MDO3000 Series oscilloscopes.

### Key features

- USB 2.0 Compliance Testing
  - Automated Compliance Testing for USB 2.0 Verification
  - Designed for use with MSO/DPO5000, DPO7000C, and DPO/DSA/MSO7000C/D/DX/SX Series Oscilloscopes
- SR-USB USB Triggering and Analysis
  - Automated Trigger and Decode for USB 2.0 and 3.0
  - Designed for use with MSO/DPO5000, DPO7000C, and DPO/DSA/MSO7000C/D/DX Series Oscilloscopes
- 5-SRUSB2 USB Triggering and Analysis
  - Automated Trigger and Decode for USB 2.0
  - Designed for use with 5 Series MSO
- DPO4USB USB 2.0 Triggering and Analysis
  - Automated Trigger, Decode, and Search for USB 2.0
  - Designed for use with MDO4000 Series Oscilloscopes
- MDO3USB USB 2.0 Triggering and Analysis
  - Automated Trigger, Decode, and Search for USB 2.0
  - Designed for use with MDO3000 Series Oscilloscopes

### Applications

- Low-speed USB 2.0
- Full-speed USB 2.0
- High-speed USB 2.0
- SuperSpeed USB 3.0 (trigger and analysis)

### Product description

The Tektronix USB 2.0 compliance test application (Opt. USB2) and selected Tektronix oscilloscopes provide one-button compliance testing for USB 2.0 devices as specified by the USB-IF. The USB software automates the compliance testing and allows engineers to perform the required tests efficiently and reliably right on their bench.

The Tektronix MDO4000 Series oscilloscopes with the DPO4USB Serial Application Module, MDO3000 Series oscilloscopes with the MDO3USB Serial Application Module, 5 Series MSO with the 5-SRUSB2 application, and MSO/DPO5000, DPO7000C, and DPO/DSA/MSO7000C/D/DX Series oscilloscopes with the SR-USB application simplify analysis of USB 2.0 and 3.0 waveforms when validating and debugging USB-based embedded systems by providing trigger, decode, and search for low-speed, full-speed, high-speed, and SuperSpeed USB buses. MDO3USB offers automated decode and search for low-speed, full-speed, and high-speed USB buses, as well as triggering on low-speed and full-speed buses. DPO4USB offers automated trigger, decode, and search for low-speed, full-speed, and high-speed USB buses, enabling fast and efficient validation and debug.

### USB2 – Automated USB 2.0 Physical Layer compliance testing

USB compliance testing has some unique measurement challenges:

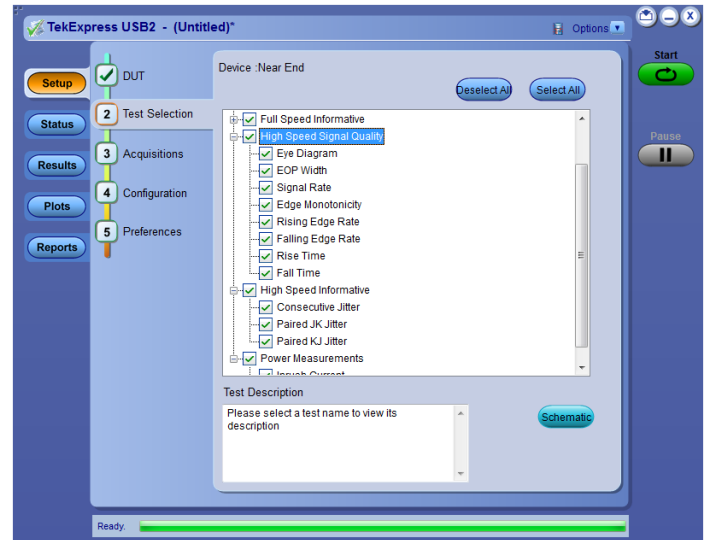
- Designers must quickly and accurately perform all compliance tests recommended by the USB Implementers Forum, Inc. (USB-IF) before they can use the “certified” USB-IF logo on their packaging
- Characterization of these electrical signals includes mask testing and parametric testing, for low-speed, full-speed, and high-speed hosts, devices, and hubs
- Signal speeds range from 1.5 Mb/s (low-speed) to 480 Mb/s (high-speed)

Test Name	Details	Speed	Pass/Fail	Value	Margin	Comments
Falling Edge Rate	Falling Edge Rate	High Speed	Pass	1622.550 V/us	440.450 V/us	N/A
Paired KJ Jitter	Max KJ Jitter	High Speed	Informative	34.809 ps	N/A	N/A
Paired KJ Jitter	Min KJ Jitter	High Speed	Informative	-40.466 ps	N/A	N/A
Paired KJ Jitter	RMS KJ Jitter	High Speed	Informative	14.326 ps	N/A	N/A
Signal Rate	Signal Rate	High Speed	Pass	480.017 Mbps	0.257 Mbps & 0.223 Mbps	N/A
Rising Edge Rate	Rising Edge Rate	High Speed	Pass	1598.270 V/us	534.730 V/us	N/A
Edge Monotonicity	Edge Monotonicity	High Speed	Pass	0.000 mV	50.000 mV	N/A
EOP Width	EOP Width	High Speed	Pass	8.0 bits	0.480 bits & 0.520 bits	Measured Value = 16.63 ns
Eye Diagram	Mask Hits	High Speed	Pass	0.000	0.000 & 0.000	N/A
Rise Time	Rise Time	High Speed	Pass	400.430 ps	100.430 ps	N/A
Consecutive Jitter	Max Consecutive Jitter	High Speed	Informative	38.681 ps	N/A	N/A
Consecutive Jitter	Min Consecutive Jitter	High Speed	Informative	-42.106 ps	N/A	N/A
Consecutive Jitter	RMS Consecutive	High Speed	Informative	15.329 ps	N/A	N/A

USB compliance test results

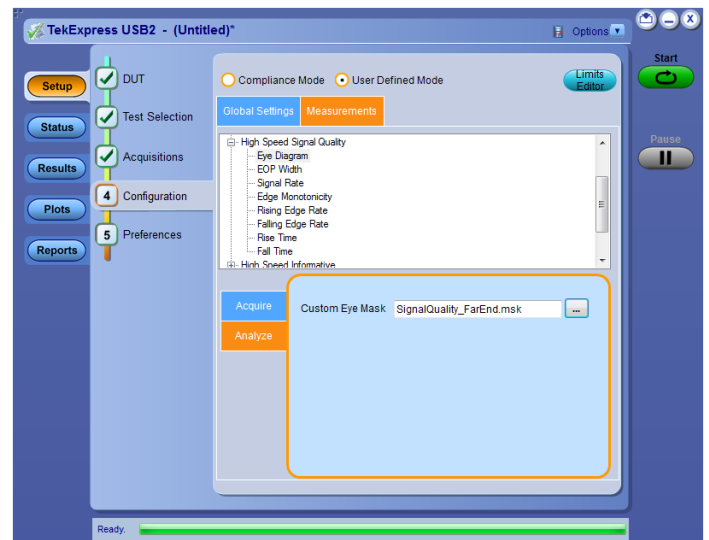
The USB2 application software provides automated compliance testing for USB 2.0 serial bus verification, including:

- Fully compliant with USB-IF tests for USB 2.0 compliance testing
- Automated eye diagram analysis verifies signal quality against standard USB-IF eye masks or custom masks
- Automated oscilloscope setups for various tests eliminate time-consuming manual setups
- Comprehensive test fixture enables quick setup and signal access for a wide range of tests
- High-speed tests: Signal Quality, Receiver Sensitivity, Chirp, Reset, Reset from High Speed, Reset from Suspend, Resume, Suspend, Packet Parameter, and Monotonicity tests
- Automatic signal generator control for receiver sensitivity simplifies testing
- Online help fully documents test procedures
- User-configurable measurement limits for tolerance testing
- Supported on Windows 7 (64-bit) and Windows 10 (64-bit) operating systems

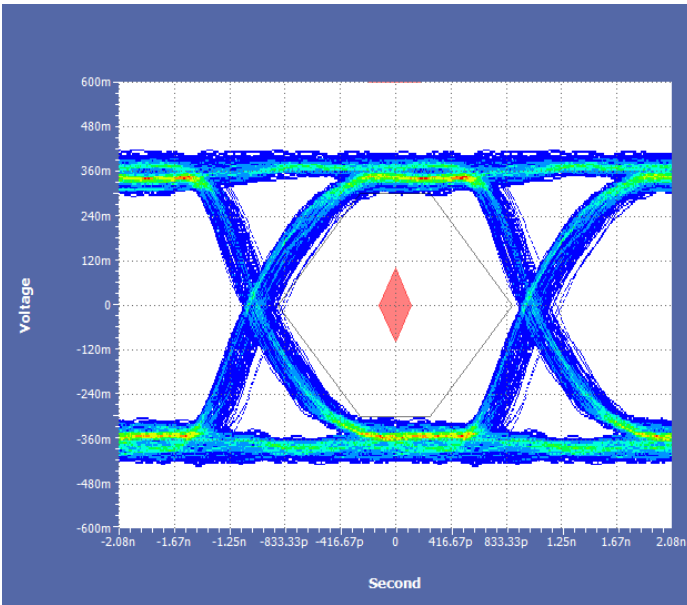


Measurement Select menu for the Signal Quality test suite

Quick Pass/Fail tests substantiated with results make the USB2 application the preferred solution for USB 2.0 physical-layer validation. In-depth analysis is possible with the statistical information about the tests performed. The user-defined measurement limits and custom mask testing also help to perform tolerance testing on a design.



Custom Mask Selection for High Speed Signal Quality



Custom Mask (red) with standard USB-IF mask (black) as reference

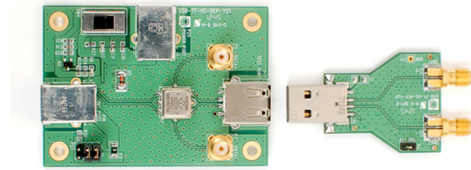
## USB2 compliance test fixtures

The Tektronix TDSUSBF test fixture set provides a probing solution for the Low- and Full-speed Signal Quality, Inrush Current, Drop and Droop, Receiver Sensitivity, and Impedance Measurement test. The TDSUSBF test fixture set is ordered separately.

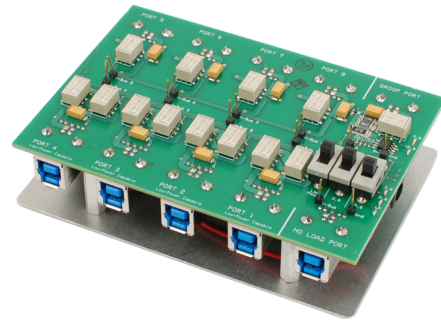
The USB-IF High-speed signal quality fixture set (USB2SIGQUAL) provides the necessary SMA-based connection for performing Eye Diagram and other signal quality measurements. The USB 2.0 / 3.0 Drop-Droop fixture (USB2/3\_DD) from USB-IF provides sufficient loads for testing voltage drop and droop levels while testing Host or Hubs (downstream ports supplying VBUS).



TDSUSBF USB 2.0 test fixture set



USB2SIGQUAL High-speed Signal Quality test fixture set (available from USB-IF)



USB-IF Droop-Drop fixture (available from USB-IF)

## SR-USB USB 2.0 and 3.0 triggering and analysis

Debugging USB-based embedded systems designs provides some complex measurement and analysis challenges:

- Capturing specific USB addresses and data
- Displaying the elements of the USB message in an understandable format, in a variety of formats, for a wide variety of engineers and technicians
- Time-correlating USB messages with analog and digital signals in the embedded system
- Capture long time windows of USB traffic and then find specific events within the acquired data

The optional SR-USB application software, installed in an MSO/DPO5000, DPO7000C, or DPO/DSA/MSO7000C/D/DX Series oscilloscope, provides a robust set of tools for debugging embedded systems with USB 2.0 and 3.0 serial buses, including:

- Automated serial triggering and decode for low-speed, full-speed, and high-speed USB 2.0 signals
- Serial triggering and decode for SuperSpeed USB 3.0 signals (8b/10b)
- Trigger on all the critical elements of a USB bus such as address, data, etc.
- Decode all the critical elements of each USB message. No more counting 1s and 0s!
- Search through long acquisitions using user-defined criteria to find specific messages
- Event table shows decoded serial bus activity in a tabular, time-stamped format for quick summary of system activity

## USB serial triggering

Trigger on packet content such as sync, reset, suspend/resume, token (address) packets with specific address and endpoint, specific data content, handshake packets, special packets, and errors.



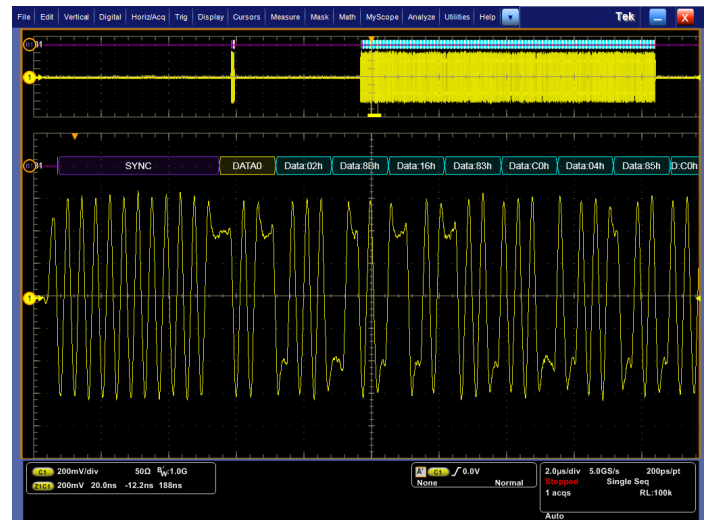
Triggering on a specific PID on a USB full-speed bus. A complete set of triggers, including triggers for specific token (address) and data packet content, ensures you quickly capture your event of interest.

## USB serial decode

The SR-USB application provides a higher-level, combined view of the individual signals that make up the USB bus, making it easy to identify where packets begin and end and identify subpacket components such as sync, PID, data, CRC, errors, etc.



Color-coded decoded display of low-speed USB bus, showing Sync, PID, CRC, and Stop components of the serial signal



High-speed USB decoded display, automatically displaying bus content in any of several digital formats

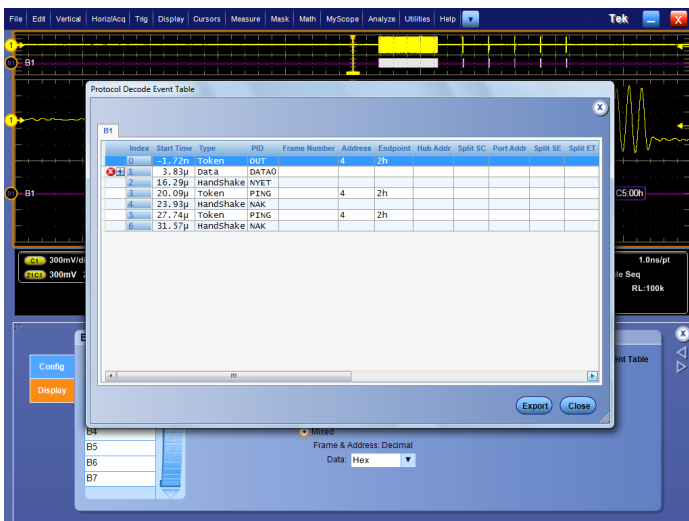


USB 3.0 bus display showing multiple layers simultaneously

Are you wasting time manually decoding the waveform? Tired of having to visually inspect the waveform to count clocks, determine if each bit is a 1 or a 0, combine bits into bytes, and determine the hex value? Let the oscilloscope with the SR-USB application do it for you! Once you've set up a USB bus, the MSO/DPO5000, DPO7000C, or DPO/DSA/MSO7000C/DX Series will decode each packet on the bus, and display the value in Hex, Binary, or ASCII in the bus waveform.

## USB 2.0 Event table

In addition to seeing decoded packet data on the bus waveform itself, you can view all captured packets in a tabular view much like you would see in a software listing. Packets are time stamped and listed consecutively with columns for each component (Time, PID, Address, Payload, and Errors).



USB decoded Event table showing all packet information with time-stamp information

## USB 2.0 search

USB packet content triggering is very useful for isolating the event of interest, but once you've captured it and need to analyze the surrounding data, what do you do? In the past, users had to manually scroll through the waveform counting and converting bits and looking for what caused the event. With the SR-USB application installed, you can enable the oscilloscope to automatically search through the acquired data for user-defined criteria including serial packet content. Each occurrence is highlighted by a search mark. Rapid navigation between marks is as simple as pressing the **Previous** (←) and **Next** (→) buttons on the oscilloscope front panel.

## 5-SRUSB2 USB 2.0 triggering and analysis

Debugging USB-based embedded systems designs provides some complex measurement and analysis challenges:

- Capturing specific USB addresses and data
- Displaying the elements of the USB message in an understandable format, in a variety of formats, for a wide variety of engineers and technicians
- Time-correlating USB messages with analog and digital signals in the embedded system
- Capture long time windows of USB traffic and then find specific events within the acquired data

The optional 5-SRUSB2 application software, installed in a 5 Series MSO, provides a robust set of tools for debugging embedded systems with USB 2.0 serial buses, including:

- Automated serial triggering and decode for low-speed, full-speed, and high-speed USB 2.0 signals
- Trigger on all the critical elements of a USB bus such as address, data, etc.
- Decode all the critical elements of each USB message. No more counting 1s and 0s!
- Search through long acquisitions using user-defined criteria to find specific messages
- Results table shows decoded serial bus activity in a tabular, time-stamped format for quick summary of system activity



## DPO4USB/MDO3USB - USB 2.0 triggering and analysis

Debugging USB-based embedded system designs provides some complex measurement and analysis challenges:

- Capturing specific USB addresses and data
- Displaying the elements of the USB message in an understandable format, in a variety of formats, for a wide variety of engineers and technicians
- Time-correlating USB messages with analog and digital signals in the embedded system
- Capture long time windows of USB traffic and then find specific events within the acquired data

The optional DPO4USB application module, installed in an MDO4000 Series oscilloscope, or the optional MDO3USB application module, installed in an MDO3000 Series oscilloscope, provides a robust set of tools for debugging embedded systems with USB 2.0 serial buses, including:

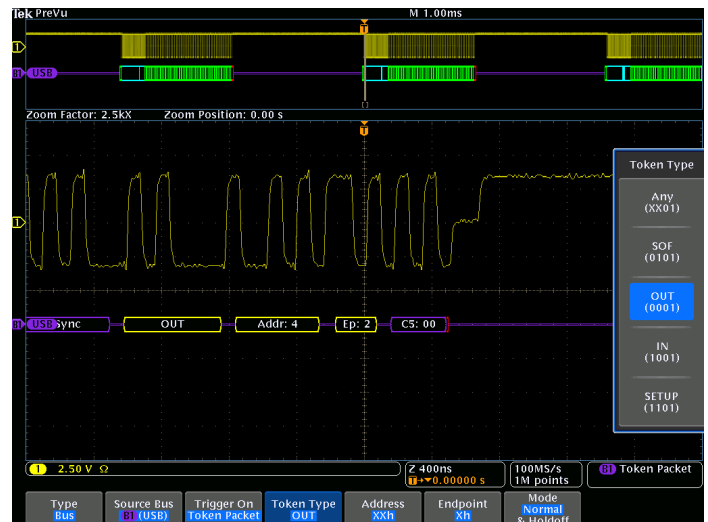
- Automated serial triggering for low-speed, full-speed, and high-speed (DPO4USB only) USB 2.0 signals
- Automated serial decode and search for low-speed, full-speed, and high-speed USB 2.0 signals
- Trigger on all the critical elements of a USB bus such as address, data, etc.
- Decode all the critical elements of each USB message. No more counting 1s and 0s!
- Search through long acquisitions using user-defined criteria to find specific messages
- Event table shows decoded serial bus activity in a tabular, time-stamped format for quick summary of system activity

### USB 2.0 serial triggering

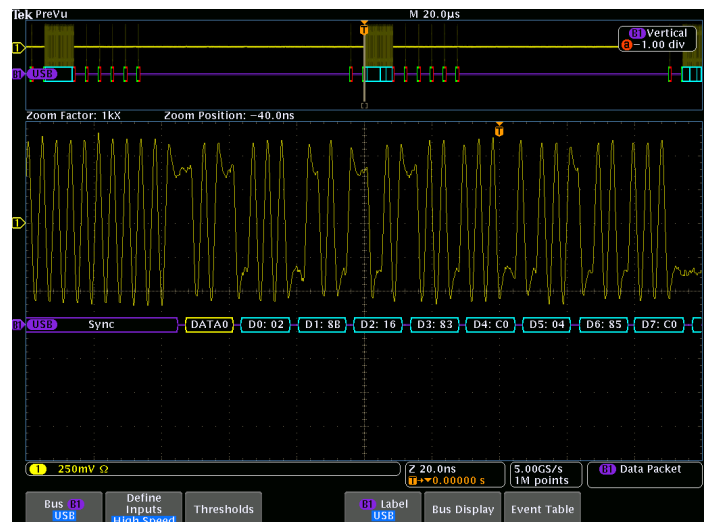
Trigger on packet content such as sync, reset, suspend/resume, token (address) packets with specific address and endpoint, specific data content, handshake packets, special packets, and errors.

### USB 2.0 decode

The DPO4USB/MDO3USB USB Serial Application Module provides a higher-level, combined view of the individual signals that make up the USB bus, making it easy to identify where packets begin and end and identifying subpacket components such as sync, PID, data, CRC, errors, etc.



Triggering on a specific PID on an USB FS bus. A complete set of triggers, including triggers for specific Token (address) and data packet content, ensures you quickly capture your event of interest.

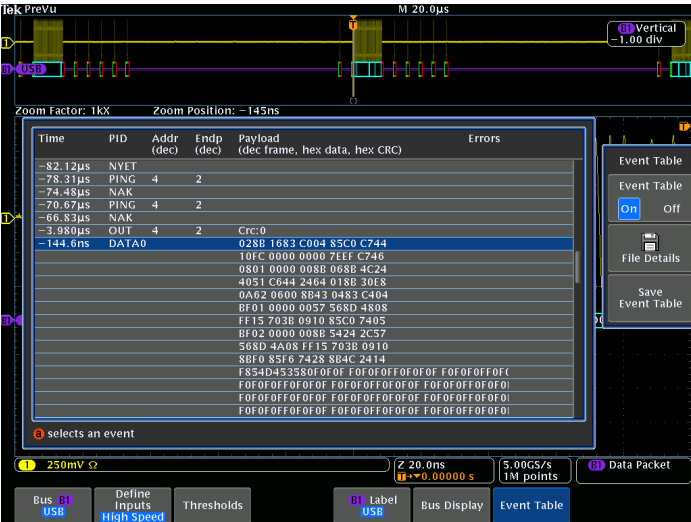


High-speed USB decoded display, automatically displaying bus content in any of several digital formats

Are you wasting time manually decoding the waveform? Tired of having to visually inspect the waveform to count clocks, determine if each bit is a 1 or a 0, combine bits into bytes, and determine the hex value? Let the oscilloscope with a USB Triggering and Analysis Application module do it for you! Once you've set up a USB bus, the MDO4000 or MDO3000 Series will decode each packet on the bus, and display the value in Hex, Binary, or ASCII in the bus waveform.

USB 2.0 Event table

In addition to seeing decoded packet data on the bus waveform itself, you can view all captured packets in a tabular view much like you would see in a software listing. Packets are time stamped and listed consecutively with columns for each component (Time, PID, Address, Payload, and Errors).



USB decoded Event table showing all packet information with time-stamp information

USB 2.0 search

USB packet content triggering is very useful for isolating the event of interest, but once you've captured it and need to analyze the surrounding data, what do you do? In the past, users had to manually scroll through the waveform counting and converting bits and looking for what caused the event. With a USB Serial Application Module, you can enable the oscilloscope to automatically search through the acquired data for user-defined criteria including serial packet content. Each occurrence is highlighted by a search mark. Rapid navigation between marks is as simple as pressing the **Previous** (←) and **Next** (→) buttons on the oscilloscope front panel. Search results can also be displayed in a time-stamped Search Mark Table and the search results can be exported to a .CSV file.

# Specifications

## USB2

Instrument compatibility	Oscilloscope	Description
	MSO5034/B DPO5034/B MSO5054/B DPO5054/B MSO5104/B DPO5104/B DPO7054C DPO7104C	USB 2.0 Compliance: Low-speed and Full-speed USB
	MSO5204/B DPO5204/B DPO7254C DPO7354C All DPO/DSA/MSO70000C/D/DX/SX models	USB 2.0 Compliance: Low-speed, Full-speed, and High-speed USB

## Testing options

USB tests	Host, hubs, and devices
Signal Quality tests	Eye Diagram Test, Jitter (JK, KJ, and Consecutive), Crossover Voltage Range, Signal Rate, End-of-Packet Width, Rising Edge Rate, Falling Edge Rate
High-speed tests	Receiver Sensitivity, Chirp, Reset, Resume, Reset from High Speed, Reset from Suspend, Packet Parameter, and Edge Monotonicity test
Inrush Current check	Data-sufficiency readout. Coulombs and capacitance listed across inrush regions
Droop test	Volts readout
Speed selection	Low-speed (LS), Full-speed (FS), and High-speed (HS)
Signal direction	Upstream and downstream
Test Point selection	Near End and Far End
Report Generation format	MHTML, PDF, and CSV formats

## SR-USB

### Instrument compatibility

Oscilloscope	Description
MSO5034/B DPO5034/B MSO5054/B DPO5054/B DPO7054C	Trigger and Decode: Low-speed and Full-speed USB
MSO5104/B DPO5104/B MSO5204/B DPO5204/B	Trigger and Decode: Low-speed, Full-speed, and High-speed USB
DPO7104C DPO7254C DPO7354C	Decode: Low-speed, Full-speed, and High-speed USB Trigger: Low-speed and Full-speed USB
All DPO/DSA/MSO70000C/D/DX models	Decode: Low-speed, Full-speed, and High-speed, and SuperSpeed (8b/10b) USB Trigger: Low-speed and Full-speed USB

## Bus Setup options

### USB compatibility

Low-speed and Full-speed: All MSO/DPO5000, DPO7000C, and DPO/DSA/MSO70000C/D/DX Series models

High-speed: MSO/DPO5204/B, MSO/DPO5104/B, DPO7354C, DPO7254C, DPO7104C, and DPO/DSA/MSO70000C/D/DX models only

SuperSpeed: DPO/DSA/MSO70000C/D/DX models only

### Sources

#### Single-ended

Analog channels 1-4

Math channels 1-4

#### Differential

Digital channels D0-D15 (MSO5000 and MSO70000C/DX Series only)

Analog channels 1-4

Math channels 1-4

### Recommended probing

Low-speed and Full-speed: Single-ended or differential

High-speed/SuperSpeed: Differential

### Address/Data formats available

Hex, Binary, Decimal

Decimal: Frame and Address

Hex or ASCII: Data

### Display modes

#### Bus

Bus only

#### Bus and waveforms

Simultaneous display of bus and digital waveforms

#### Event table

Decoded packet data in a tabular view

**Bus Trigger options****Trigger and/or search on****Low-speed**

Trigger/Search on Sync, Reset, Suspend, Resume, End of Packet, Token (Address) Packet, Data Packet, Handshake Packet, Special Packet, Error

Packet type	Description
Token packet	Any token type, SOF, OUT, IN, SETUP; Address can be further specified to trigger on $\leq$ , $<$ , $=$ , $>$ , $\geq$ , $\neq$ a particular value, or inside or outside of a range. Frame number can be specified for SOF token using Binary, Hex, Unsigned Decimal, and Don't Care digits.
Data packet	Any data type, DATA0, DATA1; Data can be further specified to trigger on $\leq$ , $<$ , $=$ , $>$ , $\geq$ , $\neq$ a particular data value, or inside or outside of a range
Handshake packet	Any handshake type, ACK, NAK, STALL
Special packet	Any special type, Reserved
Error	PID Check, CRC5, CRC16, Bit Stuffing

**Full-speed**

Trigger/Search on Sync, Reset, Suspend, Resume, End of Packet, Token (Address) Packet, Data Packet, Handshake Packet, Special Packet, Error

Packet type	Description
Token packet	Any token type, SOF, OUT, IN, SETUP; Address can be further specified to trigger on $\leq$ , $<$ , $=$ , $>$ , $\geq$ , $\neq$ a particular value, or inside or outside of a range. Frame number can be specified for SOF token using Binary, Hex, Unsigned Decimal, and Don't Care digits.
Data packet	Any data type, DATA0, DATA1; Data can be further specified to trigger on $\leq$ , $<$ , $=$ , $>$ , $\geq$ , $\neq$ a particular data value, or inside or outside of a range
Handshake packet	Any handshake type, ACK, NAK, STALL
Special packet	Any special type, PRE, Reserved.
Error	PID Check, CRC5, CRC16, Bit Stuffing

**High-speed**

Trigger/Search on Sync, Reset, Suspend, Resume, End of Packet, Token (Address) Packet, Data Packet, Handshake Packet, Special Packet, Error

Packet type	Description
Token packet	Any token type, SOF, OUT, IN, SETUP; Address can be further specified to trigger on $\leq$ , $<$ , $=$ , $>$ , $\geq$ , $\neq$ a particular value, or inside or outside of a range. Frame number can be specified for SOF token using Binary, Hex, Unsigned Decimal, and Don't Care digits.
Data packet	Any data type, DATA0, DATA1, DATA2, MDATA; Data can be further specified to trigger on $\leq$ , $<$ , $=$ , $>$ , $\geq$ , $\neq$ a particular data value, or inside or outside of a range.
Handshake packet	Any handshake type, ACK, NAK, STALL, NYET
Special packet	Any special type, ERR, SPLIT, PING, Reserved. SPLIT packet components that can be specified include: Hub Address Start/Complete – Don't Care, Start (SSPLIT), Complete (CSPLIT) Port Address Start and End bits – Don't Care, Control/Bulk/Interrupt (Full-speed Device, Low-speed Device), Isochronous (Data is Middle, Data is End, Data is Start, Data is All) Endpoint Type – Don't Care, Control, Isochronous, Bulk, Interrupt
Error	PID Check, CRC5, CRC16, Any

**SuperSpeed**

Trigger/Search on Ordered Set, Character, Symbol, Error

Packet type	Description
Ordered Set	SKP, DPPSTART, DPPEND, DPPABORT
Character	K28.1 (SKP), K28.5 (COM) or other user-defined (8b/10b)
Symbol	User-defined with positive, negative, or either disparity
Error	Character or Disparity

## Bus decode

USB Data rates	Low-speed: 1.5 Mb/s
	Full-speed: 12 Mb/s
	High-speed: 480 Mb/s
	SuperSpeed: 5 Gb/s

Decode display	Start (green bar)
	PID (yellow packet)
	Data (cyan packet)
	CRC (purple packet)
	Stop (red bar)

## 5-SRUSB2

Instrument compatibility	Oscilloscope	Description
	MSO54 opt. 5-BW-350 MSO54 opt. 5-BW-500 MSO56 opt. 5-BW-350 MSO56 opt. 5-BW-500 MSO58 opt. 5-BW-350 MSO58 opt. 5-BW-500	Trigger and Decode: Low-speed and Full-speed USB
	MSO54 opt. 5-BW-1000 MSO54 opt. 5-BW-2000 MSO56 opt. 5-BW-1000 MSO56 opt. 5-BW-2000 MSO58 opt. 5-BW-1000 MSO58 opt. 5-BW-2000	Trigger and Decode: Low-speed, Full-speed, and High-speed USB

## Bus Setup options

USB compatibility	Low-speed and Full-speed: All 5 Series MSO models with 350 MHz or 500 MHz bandwidth
	High-speed: All 5 Series MSO models with 1 GHz or 2 GHz bandwidth

### Sources

Single-ended	Analog channels
	Digital channels
	Active Math channels
	Active Reference waveforms
Differential	Analog channels
	Active Math channels
	Active Reference waveforms

Recommended probing	Low-speed and Full-speed: Single-ended or differential
	High-speed: Differential

Address/Data formats available	Hex, Binary, Decimal
	Decimal: Frame and Address
	Hex or ASCII: Data

**Bus Setup options**

## Display modes

Bus	Bus only
Bus and waveforms	Simultaneous display of bus and digital waveforms
Results table	Decoded packet data in a tabular view

**Bus Trigger options**

## Trigger and/or search on

## Low-speed

Trigger/Search on Sync, Handshake Packet, Special Packet, Error, Token (Address) Packet, Data Packet, Reset, Suspend, Resume, End of Packet.

Packet type	Description
Token packet	Any token type, SOF, OUT, IN, SETUP; Address can be further specified to trigger on $\leq$ , $<$ , $=$ , $>$ , $\geq$ , $\neq$ a particular value, or inside or outside of a range. Frame number can be specified for SOF token using Binary, Hex, Unsigned Decimal, and Don't Care digits.
Data packet	Any data type, DATA0, DATA1; 1 – 16 bytes of Data can be further specified to trigger on $\leq$ , $<$ , $=$ , $>$ , $\geq$ , $\neq$ a particular data value, or inside or outside of a range.
Handshake packet	Any handshake type, ACK, NAK, STALL
Special packet	Any special type, PRE, Reserved
Error	PID Check bits, Token CRC5, Data CRC16, Bit Stuffing

## Full-speed

Trigger/Search on Sync, Handshake Packet, Special Packet, Error, Token (Address) Packet, Data Packet, Reset, Suspend, Resume, End of Packet

Packet type	Description
Token packet	Any token type, SOF, OUT, IN, SETUP; Address can be further specified to trigger on $\leq$ , $<$ , $=$ , $>$ , $\geq$ , $\neq$ a particular value, or inside or outside of a range. Frame number can be specified for SOF token using Binary, Hex, Unsigned Decimal, and Don't Care digits.
Data packet	Any data type, DATA0, DATA1; 1 – 16 bytes of Data can be further specified to trigger on $\leq$ , $<$ , $=$ , $>$ , $\geq$ , $\neq$ a particular data value, or inside or outside of a range.
Handshake packet	Any handshake type, ACK, NAK, STALL
Special packet	Any special type, PRE, Reserved.
Error	PID Check bits, Token CRC5, Data CRC16, Bit Stuffing

## Bus Trigger options

### High-speed

Trigger/Search on Sync, Handshake Packet, Special Packet, Error, Token (Address) Packet, Data Packet, Reset, Suspend, Resume, End of Packet

Packet type	Description
Token packet	Any token type, SOF, OUT, IN, SETUP; Address can be further specified to trigger on $\leq$ , $<$ , $=$ , $>$ , $\geq$ , $\neq$ a particular value, or inside or outside of a range. Frame number can be specified for SOF token using Binary, Hex, Unsigned Decimal, and Don't Care digits.
Data packet	Any data type, DATA0, DATA1, DATA2, MDATA; 1 – 16 bytes of Data can be further specified to trigger on $\leq$ , $<$ , $=$ , $>$ , $\geq$ , $\neq$ a particular data value, or inside or outside of a range.
Handshake packet	Any handshake type, ACK, NAK, STALL, NYET
Special packet	Any special type, ERR, SPLIT, PING, Reserved. SPLIT packet components that can be specified include: Hub Address Start/Complete – Don't Care, Start (SSPLIT), Complete (CSPLIT) Port Address Start and End bits – Don't Care, Control/Bulk/Interrupt (Full-speed Device, Low-speed Device), Isochronous (Data is Middle, Data is End, Data is Start, Data is All) Endpoint Type – Don't Care, Control, Isochronous, Bulk, Interrupt
Error	PID Check, CRC5, CRC16, Any

### Decode display

Start (green bar)  
PID (yellow packet)  
Data (cyan packet)  
CRC (purple packet)  
Stop (red bar)

## DPO4USB

### Instrument compatibility

Oscilloscope	Description
All 100 MHz, 200 MHz, 350 MHz, 500 MHz MDO4000/B, MSO4000/B, and DPO4000 <sup>1</sup> /B/C Series	Trigger and Decode: Low-speed and Full-speed
MSO4104 DPO4104 <sup>1</sup>	Trigger: Low-speed and Full-speed Decode: Low-speed, Full-speed, and High-speed
All 1 GHz models of MSO/DPO4000B and MDO4000/B/C Series	Trigger and Decode: Low Speed, Full Speed, and High Speed

## Bus Setup options

### USB 2.0 compatibility

Low-speed and Full-speed: All MDO/MSO/DPO4000 Series models  
High-speed: Models with 1 GHz analog channel bandwidth

### Sources

#### Single-ended

Analog channels 1-4  
Digital channels D0-D15 (MDO and MSO Series only)

#### Differential

Analog channels 1-4  
Math channel  
Reference channels 1-4

<sup>1</sup> For DPO4000 (non-B) Series products with serial numbers lower than C020000 and no serial triggering hardware update installed, USB triggering is not supported.

**Bus Setup options**

<b>Recommended probing</b>	Low-speed and Full-speed: Single-ended or differential High-speed: Differential
<b>Threshold presets</b>	Low-speed and Full-speed: Single-ended (D+: 1.4 V; D-: -1.4 V), Differential (High: 1.4 V; Low: -1.4 V) High-speed: Differential (High: 100 mV; Low: -100 mV)
<b>Address/Data formats available</b>	Hex, Binary, Decimal Decimal: Frame and Address Hex or ASCII: Data
<b>Display modes</b>	
<b>Bus</b>	Bus only
<b>Bus and waveforms</b>	Simultaneous display of bus and digital waveforms
<b>Event table</b>	Decoded packet data in a tabular view

## Bus Trigger options

### Trigger and/or search on

#### Low-speed

Trigger/Search on Sync, Reset, Suspend, Resume, End of Packet, Token (Address) Packet, Data Packet, Handshake Packet, Special Packet, Error

Packet type	Description
Token packet	Any token type, SOF, OUT, IN, SETUP; Address can be further specified to trigger on $\leq$ , $<$ , $=$ , $>$ , $\geq$ , $\neq$ a particular value, or inside or outside of a range. Frame number can be specified for SOF token using Binary, Hex, Unsigned Decimal, and Don't Care digits.
Data packet	Any data type, DATA0, DATA1; Data can be further specified to trigger on $\leq$ , $<$ , $=$ , $>$ , $\geq$ , $\neq$ a particular data value, or inside or outside of a range.
Handshake packet	Any handshake type, ACK, NAK, STALL
Special packet	Any special type, Reserved
Error	PID Check, CRC5, CRC16, Bit Stuffing

#### Full-speed

Trigger/Search on Sync, Reset, Suspend, Resume, End of Packet, Token (Address) Packet, Data Packet, Handshake Packet, Special Packet, Error

Packet type	Description
Token packet	Any token type, SOF, OUT, IN, SETUP; Address can be further specified to trigger on $\leq$ , $<$ , $=$ , $>$ , $\geq$ , $\neq$ a particular value, or inside or outside of a range. Frame number can be specified for SOF token using Binary, Hex, Unsigned Decimal, and Don't Care digits.
Data packet	Any data type, DATA0, DATA1; Data can be further specified to trigger on $\leq$ , $<$ , $=$ , $>$ , $\geq$ , $\neq$ a particular data value, or inside or outside of a range.
Handshake packet	Any handshake type, ACK, NAK, STALL
Special packet	Any special type, PRE, Reserved.
Error	PID Check, CRC5, CRC16, Bit Stuffing

#### High-speed

Trigger/Search on Sync, Reset, Suspend, Resume, End of Packet, Token (Address) Packet, Data Packet, Handshake Packet, Special Packet, Error

Packet type	Description
Token packet	Any token type, SOF, OUT, IN, SETUP; Address can be further specified to trigger on $\leq$ , $<$ , $=$ , $>$ , $\geq$ , $\neq$ a particular value, or inside or outside of a range. Frame number can be specified for SOF token using Binary, Hex, Unsigned Decimal, and Don't Care digits.
Data packet	Any data type, DATA0, DATA1, DATA2, MDATA; Data can be further specified to trigger on $\leq$ , $<$ , $=$ , $>$ , $\geq$ , $\neq$ a particular data value, or inside or outside of a range.
Handshake packet	Any handshake type, ACK, NAK, STALL, NYET
Special packet	Any special type, ERR, SPLIT, PING, Reserved. SPLIT packet components that can be specified include: Hub Address Start/Complete – Don't Care, Start (SSPLIT), Complete (CSPLIT) Port Address Start and End bits – Don't Care, Control/Bulk/Interrupt (Full-speed Device, Low-speed Device), Isochronous (Data is Middle, Data is End, Data is Start, Data is All) Endpoint Type – Don't Care, Control, Isochronous, Bulk, Interrupt
Error	PID Check, CRC5, CRC16

## Bus decode

USB Data rates	Low-speed: 1.5 Mb/s
	Full-speed: 12 Mb/s
	High-speed: 480 Mb/s

Decode display	Start (green bar)
	PID (yellow packet)
	Data (cyan packet)
	CRC (purple packet)
	Stop (red bar)

## MDO3USB

Instrument compatibility	Oscilloscope	Description
	All 100 MHz, 200 MHz, 350 MHz, 500 MHz MDO3000 Series	Trigger and Decode: Low-speed and Full-speed
	All 1 GHz MDO3000 Series	Trigger: Low-speed and Full-speed Decode: Low-speed, Full-speed, and High-speed

## Bus Setup options

USB 2.0 compatibility	Low-speed and Full-speed: All MDO3000 Series models
	High-speed: Models with 1 GHz analog channel bandwidth

### Sources

Single-ended	Analog channels 1-4
	Digital channels D0-D15 (models with MSO options only)
Differential	Analog channels 1-4
	Math channel
	Reference channels 1-4

Recommended probing	Low-speed and Full-speed: Single-ended or differential
	High-speed: Differential

Threshold presets	Low-speed and Full-speed: Single-ended (D+: 1.4 V; D-: -1.4 V), Differential (High: 1.4 V; Low: -1.4 V)
	High-speed: Differential (High: 100 mV; Low: -100 mV)

Address/Data formats available	Hex, Binary, Decimal
	Decimal: Frame and Address
	Hex or ASCII: Data

### Display modes

Bus	Bus only
Bus and waveforms	Simultaneous display of bus and digital waveforms
Event table	Decoded packet data in a tabular view

## Bus Trigger options

Trigger and/or search on

### Low-speed

Trigger/Search on Sync, Reset, Suspend, Resume, End of Packet, Token (Address) Packet, Data Packet, Handshake Packet, Special Packet, Error

Packet type	Description
Token packet	Any token type, SOF, OUT, IN, SETUP; Address can be further specified to trigger on $\leq$ , $<$ , $=$ , $>$ , $\geq$ , $\neq$ a particular value, or inside or outside of a range. Frame number can be specified for SOF token using Binary, Hex, Unsigned Decimal, and Don't Care digits.
Data packet	Any data type, DATA0, DATA1; Data can be further specified to trigger on $\leq$ , $<$ , $=$ , $>$ , $\geq$ , $\neq$ a particular data value, or inside or outside of a range.
Handshake packet	Any handshake type, ACK, NAK, STALL
Special packet	Any special type, Reserved
Error	PID Check, CRC5, CRC16, Bit Stuffing

### Full-speed

Trigger/Search on Sync, Reset, Suspend, Resume, End of Packet, Token (Address) Packet, Data Packet, Handshake Packet, Special Packet, Error

Packet type	Description
Token packet	Any token type, SOF, OUT, IN, SETUP; Address can be further specified to trigger on $\leq$ , $<$ , $=$ , $>$ , $\geq$ , $\neq$ a particular value, or inside or outside of a range. Frame number can be specified for SOF token using Binary, Hex, Unsigned Decimal, and Don't Care digits.
Data packet	Any data type, DATA0, DATA1; Data can be further specified to trigger on $\leq$ , $<$ , $=$ , $>$ , $\geq$ , $\neq$ a particular data value, or inside or outside of a range.
Handshake packet	Any handshake type, ACK, NAK, STALL
Special packet	Any special type, PRE, Reserved.
Error	PID Check, CRC5, CRC16, Bit Stuffing

### High-speed

Trigger/Search on Sync, Reset, Suspend, Resume, End of Packet, Token (Address) Packet, Data Packet, Handshake Packet, Special Packet, Error

Packet type	Description
Token packet	Any token type, SOF, OUT, IN, SETUP; Address can be further specified to trigger on $\leq$ , $<$ , $=$ , $>$ , $\geq$ , $\neq$ a particular value, or inside or outside of a range. Frame number can be specified for SOF token using Binary, Hex, Unsigned Decimal, and Don't Care digits.
Data packet	Any data type, DATA0, DATA1, DATA2, MDATA; Data can be further specified to trigger on $\leq$ , $<$ , $=$ , $>$ , $\geq$ , $\neq$ a particular data value, or inside or outside of a range.
Handshake packet	Any handshake type, ACK, NAK, STALL, NYET
Special packet	Any special type, ERR, SPLIT, PING, Reserved. SPLIT packet components that can be specified include: Hub Address Start/Complete – Don't Care, Start (SSPLIT), Complete (CSPLIT) Port Address Start and End bits – Don't Care, Control/Bulk/Interrupt (Full-speed Device, Low-speed Device), Isochronous (Data is Middle, Data is End, Data is Start, Data is All) Endpoint Type – Don't Care, Control, Isochronous, Bulk, Interrupt
Error	PID Check, CRC5, CRC16

## Bus decode

### USB Data rates

Low-speed: 1.5 Mb/s

Full-speed: 12 Mb/s

High-speed: 480 Mb/s

### Decode display

Start (green bar)

PID (yellow packet)

Data (cyan packet)

CRC (purple packet)

Stop (red bar)

## Ordering information

### USB2

#### USB 2.0 Physical-layer Compliance Test Application

Model	New instrument orders	Product upgrades	Floating licenses
MSO/DPO5000 Series	Opt. USB2	DPO-UP, Opt. USB2	DPOFL-USB2
DPO7000C Series	Opt. USB2	DPO-UP, Opt. USB2	DPOFL-USB2
DPO/DSA/MSO70000C/D/DX/SX Series	Opt. USB2	DPO-UP, Opt. USB2	DPOFL-USB2

### SR-USB

#### USB Triggering and Analysis Application

Model	New instrument orders	Product upgrades	Floating licenses
MSO/DPO5000 Series	Opt. SR-USB	DPO-UP Opt. SR-USB	DPOFL-SR-USB
DPO7000C Series	Opt. SR-USB	DPO-UP Opt. SR-USB	DPOFL-SR-USB
DPO/DSA/MSO70000C/D/DX Series	Opt. SR-USB	DPO-UP Opt. SR-USB	DPOFL-SR-USB

### 5-SRUSB2

#### USB 2.0 Triggering and Analysis Application

Model	New instrument orders	Product upgrades	Floating licenses
5 Series MSO	Opt. 5-SRUSB2	SUP5-SRUSB2	-

### DPO4USB

#### USB 2.0 Triggering and Analysis Application

Model	New instrument orders	Product upgrades	Floating licenses
MDO4000 Series	DPO4USB	DPO4USB	-

### MDO3USB

#### USB 2.0 Triggering and Analysis Application

Model	New instrument orders	Product upgrades	Floating licenses
MDO3000 Series	MDO3USB	MDO3USB	-

## Recommended accessories

The P6248, P6330, TDP1500, and TDP3500 differential probes and P6245, TAP1500, and TAP2500 single-ended probes are approved for compliance testing.

Higher-performance active or differential probes may be used for design applications. It is recommended to use a probe with 1X attenuation for best results.

Please refer to [www.tektronix.com/probes](http://www.tektronix.com/probes) for further information on the recommended models of probes and any necessary probe adapters.

### Accessories

<b>TDSUSBF</b>	USB 2.0 test fixture set
<b>AWG5202 or AWG5204 or AWG5208 or AWG5000C or AWG7000C or AWG70000A series</b>	Arbitrary waveform generator, signal source for receiver sensitivity tests. 5X attenuators are required
<b>USB2SIGQUAL</b>	USB-IF High-speed Signal Quality test fixture set (sold through USB-IF, please see USB.org)
<b>USB2/3_DD</b>	USB-IF Droop-Drop fixture (sold through USB-IF, please see USB.org)

### SR-USB

Please refer to [www.tektronix.com/probes](http://www.tektronix.com/probes) for further information on the recommended models of probes and any necessary probe adapters.

### 5-SRUSB2

Please refer to [www.tektronix.com/probes](http://www.tektronix.com/probes) for further information on the recommended models of probes and any necessary probe adapters.

### DPO4USB

Please refer to [www.tektronix.com/probes](http://www.tektronix.com/probes) for further information on the recommended models of probes and any necessary probe adapters.

### MDO3USB

Please refer to [www.tektronix.com/probes](http://www.tektronix.com/probes) for further information on the recommended models of probes and any necessary probe adapters.

### Additional information

Tektronix offers a range of solutions for USB testing, including HSIC (High Speed Inter Connect) and USB 3.1. To see a comprehensive listing, and download the latest resources, visit [www.tektronix.com/USB](http://www.tektronix.com/USB).

USB solution updates and up-to-date instrument software upgrades are available at [www.tektronix.com/downloads](http://www.tektronix.com/downloads).



Tektronix is registered to ISO 9001 and ISO 14001 by SRI Quality System Registrar.

**ASEAN / Australasia** (65) 6356 3900  
**Belgium** 00800 2255 4835\*  
**Central East Europe and the Baltics** +41 52 675 3777  
**Finland** +41 52 675 3777  
**Hong Kong** 400 820 5835  
**Japan** 81 (3) 6714 3086  
**Middle East, Asia, and North Africa** +41 52 675 3777  
**People's Republic of China** 400 820 5835  
**Republic of Korea** +822 6917 5084, 822 6917 5080  
**Spain** 00800 2255 4835\*  
**Taiwan** 886 (2) 2656 6688

**Austria** 00800 2255 4835\*  
**Brazil** +55 (11) 3759 7627  
**Central Europe & Greece** +41 52 675 3777  
**France** 00800 2255 4835\*  
**India** 000 800 650 1835  
**Luxembourg** +41 52 675 3777  
**The Netherlands** 00800 2255 4835\*  
**Poland** +41 52 675 3777  
**Russia & CIS** +7 (495) 6647564  
**Sweden** 00800 2255 4835\*  
**United Kingdom & Ireland** 00800 2255 4835\*

**Balkans, Israel, South Africa and other ISE Countries** +41 52 675 3777  
**Canada** 1 800 833 9200  
**Denmark** +45 80 88 1401  
**Germany** 00800 2255 4835\*  
**Italy** 00800 2255 4835\*  
**Mexico, Central/South America & Caribbean** 52 (55) 56 04 50 90  
**Norway** 800 16098  
**Portugal** 800 08 12370  
**South Africa** +41 52 675 3777  
**Switzerland** 00800 2255 4835\*  
**USA** 1 800 833 9200

\* European toll-free number. If not accessible, call: +41 52 675 3777

**For Further Information.** Tektronix maintains a comprehensive, constantly expanding collection of application notes, technical briefs and other resources to help engineers working on the cutting edge of technology. Please visit [www.tek.com](http://www.tek.com).

Copyright © Tektronix, Inc. All rights reserved. Tektronix products are covered by U.S. and foreign patents, issued and pending. Information in this publication supersedes that in all previously published material. Specification and price change privileges reserved. TEKTRONIX and TEK are registered trademarks of Tektronix, Inc. All other trade names referenced are the service marks, trademarks, or registered trademarks of their respective companies.

