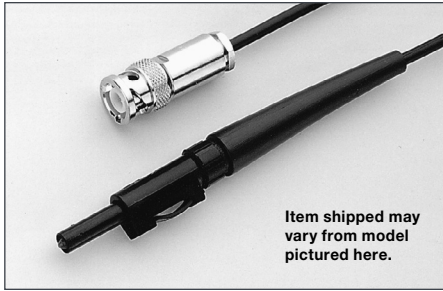


Keithley Connectors, Adapters, and Tools Selector Guide

Model	Name	Use With:
237-BAN-3A	Triax to Banana Plug	4200A-SCS, 7072, 7072-HV, DMMs
237-BNC-TRX	3-Lug Female Triax to Male BNC Connector with guard disconnected	4200A-SCS, 6517A, 6517B, 7078-TRX cables
237-TRX-BAR	3-Lug Triax Female to Female Barrel Adapter	2635B, 2636B, 4200A-SCS, 6482, triax interconnect
237-TRX-T	3-slot Male to Dual 3-Lug Female Triax Tee Adapter	4200A-SCS, 7072, 7072-HV, 7078-TRX cables
237-TRX-TBC	3-Lug Female Triax Bulkhead Connector	7072, 7072-HV, 7078-TRX cables
2188	Low-Thermal Calibration Shorting Plug	2182A
2290-5-SHVBH	5kV SHV Male Bulkhead Connector	2290-5
2290-10-SHVBH	10 kV SHV Female Bulkhead Connector	2290-10
2600-KIT	Screw Terminal Connector with Strain Relief and Cover	2601B, 2602B (2 needed), 2611B, 2612B (2 needed)
2600-TRIAX	3-Lug Triax Adapter	2601B, 2602B (2 needed), 2604B, 2611B, 2612B (2 needed), 2614B
2657A-LIM-3	Low Interconnect Module	2657A
2657A-PM-200	200 V Protection Module	2657A
3706-BKPL	Analog Backplane Extender Board	Series 3700A
3720-ST	Screw Terminal Block	3720
3721-ST	Screw Terminal Block	3721
3723-ST	Screw Terminal Block	3723
3723-ST-1	Screw Terminal Block	3723
3724-ST	Screw Terminal Block	3724
3730-ST	Screw Terminal Block	3730
3731-ST	Screw Terminal Block	3731
3740-ST	Screw Terminal Block	3740
7074-CIT	Contact Extraction Tool	7152-KIT, 7152-MTR
7078-TRX-BNC	3-slot Male Triax to BNC Adapter	4210-CVU, 4801, 6482, 6487, 6514, 6517A, 6517B, 7072, 7072-HV
7078-TRX-GND	3-slot Male Triax to BNC Adapter (guard removed)	4200A-SCS, 4801, 6517A, 6517B, 7072, 7072-HV, Series 2600B
7078-TRX-TBC	3-Lug Female Triax Bulkhead Connector w/Cap	7078-TRX cables
7703-306A	DB50 Male Connector Kit	7701, 7703, 7705, 7709
7709-308A	DB25 Male Connector Kit	7701, 7707, 7709, Series 2600B

Model	Name	Use With:
8620	4-Wire DMM Shorting Plug	2000, 2001, 2002, 2010, 2015, 2016, 2100, 2110, Series 2400, Series 2700, Series 3700A
BG-18	Dual Banana to BNC Coaxial Adapter	Series 2000, 2100, 2110, Series 2400, 2700, 2750
CAP-18	Protective Shield/Cap	BNC, 2-lug triax connectors
CAP-31	Protective Shield/Cap	3-lug triax connectors
CA-573-3A1	4-Pin Round Interlock Cable, Unterminated	2657A-LIM-3
CS-400	DB25 Male Solder Cup	CA-126-1 cable, 213
CS-458	Interlock Connector Kit	6517-ILC-3
CS-565	BNC Barrel, 4200A-SCS	BNC interconnect
CS-630	3-Lug Female Triax Bulkhead Connector	6487, 6517A, 6517B
CS-631	3-Lug Male Triax Cable Mount Connector	4200A-SCS, SC-22 cable
CS-701	BNC Tee Adapter (Female-Male-Female)	4200A-SCS
CS-719	3-Lug Triax Jack Receptacle	4200A-SCS
CS-846	Screw Terminal Test Lead Connector	230X, 2510, 2510-AT
CS-1247	SMA Female to BNC Male Adapter	4200A-SCS
CS-1249	SMA Female to SMB Plug Adapter	4200A-SCS
CS-1252	SMA Male to BNC Female Adapter	4200A-SCS
CS-1281	SMA Female to SMA Female Adapter	4200A-SCS
CS-1305	Interlock Connector	6517B
CS-1390	Male LEMO Triax to Female SMA Adapter	4200A-SCS
CS-1391	SMA Tee Adapter (Female-Male-Female)	4200A-SCS
CS-1423-3	Miniature Mating Connector	2635B, 2636B
CS-1479	SMA Male to BNC Male Adapter	4200A-SCS
CS-1592-2	Screw Terminal Plug	2651A
CS-1626-2	Screw Terminal Receptacle	2651A
CS-1629-8	Screw Terminal Connector	2651A
CS-1638-12	Rear Panel Mounting Connector	2200-20-5, 2200-30-5, 2200-32-3, 2200-60-2, 2200-72-1
CS-1655-15	Rear Panel Mating Connector	2220-30-1, 2220J-30-1, 2230-30-1, 2230J-30-1
HV-CS-1613	High Voltage Triax Feed Through Connector/Barrel (female to female)	2657A, 2600-PCT-x



Item shipped may vary from model pictured here.

237-BAN-3A Triax to Banana Plug:

Triax cable center conductor terminated in a safety banana plug (guard and shield open). For connecting DMMs and other banana jack instruments to a matrix or fixture.

For use with: 4200A-SCS, 7072, 7072-HV, DMMs



237-BNC-TRX: Male BNC to 3-lug female triax adapter (guard disconnected). Terminates triax cable in BNC plug. High voltage rating for use with 7072-HV.

For use with: 4200A-SCS, 6517A, 6517B, 7078-TRX cables



237-TRX-BAR: 3-lug triax barrel (female to female) for use with triax interconnect.

For use with: 2635B, 2636B, 4200A-SCS, triax interconnect



237-TRX-T: 3-slot male to dual 3-lug female triax tee adapter for use with 7078-TRX cables and 7072/7072-HV Semiconductor Matrix Cards. High voltage rating for use with 6517B Electrometer.

For use with: 4200A-SCS, 6517A, 6517B, 7072, 7072-HV, 7078-TRX cables



237-TRX-TBC: 3-lug female triax bulkhead connector with cap for assembly of custom panels and interface connections. High voltage rating for use with 7072-HV, etc. Uses miniature coax cable, not triax cable, at soldered end. Bulkhead is outer shield.

For use with: 7072, 7072-HV, 7078-TRX cables



2188 Low-Thermal Calibration Shorting Plug: A low-resistance, low-thermal shorting plug required to calibrate the 2182A Nanovoltmeter. Made of a LEMO connector with its pin connectors shorted together using copper wire and Sn/Ag4 silver solder.

For use with: 2182A



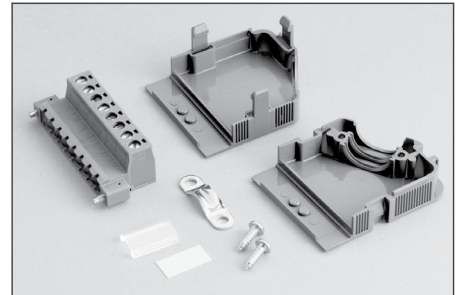
2290-5-SHVBH: Panel mount connector for connecting a 2290-5 through a 2290-5-SHV cable to an enclosure.

For use with: 2290-5



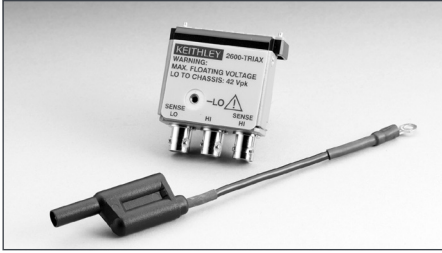
2290-10-SHVBH 10 kV SHV Female Bulkhead Connector: Panel mount connector for connecting a 2290-10 through a 2290-10-SHV cable to an enclosure.

For use with: 2290-10



2600-KIT: Screw terminal connector kit with extra screw terminal connector, strain relief, and cover for a single SourceMeter channel (two needed for use with 2602B, 2612B, and 2614B).

For use with: 2601B, 2602B, 2604B, 2611B, 2612B, 2614B, 2651A



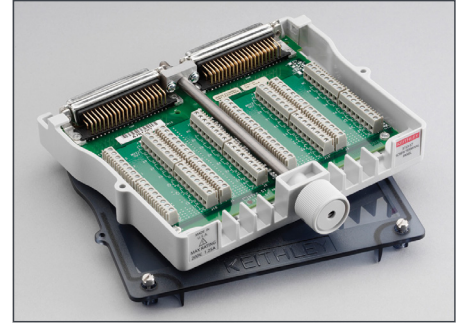
2600-TRIAX: Triax adapter for a single Series 2600B SourceMeter channel (two needed for use with 2602B and 2612B). For use with standard 3-lug triax cables.

For use with: 2601B, 2602B, 2611B, 2612B



3706-BKPL: Analog backplane extender board, 15-pin D-sub to terminal block.

For use with: Series 3700A



3723-ST: Screw Terminal Block. Accessory for 3723 for two-pole applications.

For use with: 3723



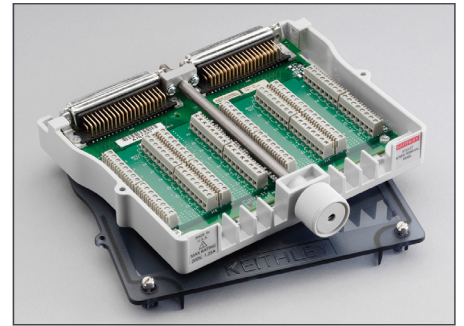
2657A-LIM-3: Low Interconnect Module for use with 2657A, HV triax cables (3 kV rated).

For use with: Series 2657A



3720-ST: Screw Terminal Block. Required with the 3720 for automatic CJC thermocouple measurements.

For use with: 3720



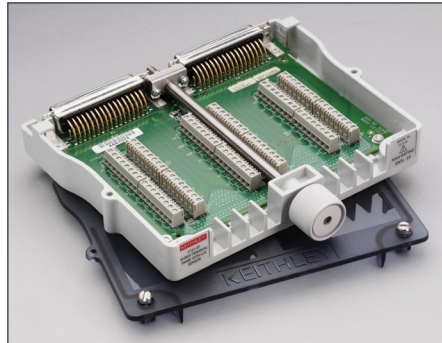
3723-ST-1: Screw Terminal Block. Accessory for the 3723 for single-pole applications.

For use with: 3723



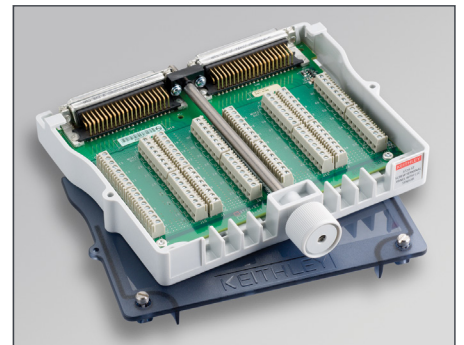
2657A-PM-200: 200V protection module to protect standard triax instruments from 2657A, standard and HV triax cables (3 kV rated).

For use with: Series 2657A



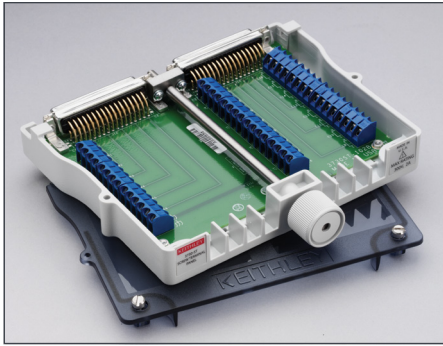
3721-ST: Screw Terminal Block. Required with the 3721 for automatic CJC thermocouple measurements.

For use with: 3721



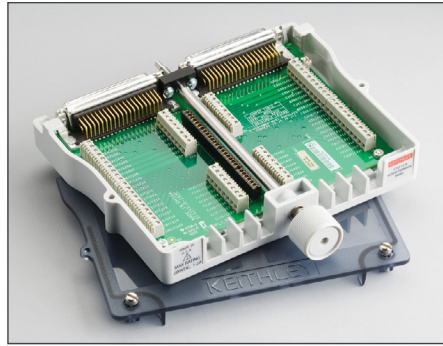
3724-ST: Screw Terminal Block.

For use with: 3724



3730-ST: Screw Terminal Block.

For use with: 3730



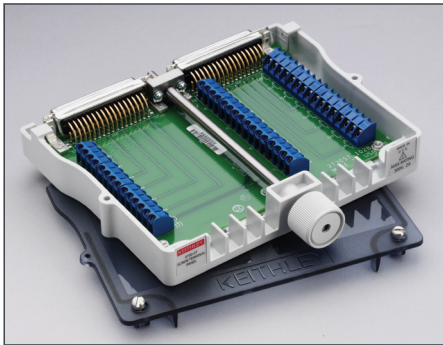
3732-ST-R: Screw Terminal Block. Enables screw terminal access and additional matrix sizes including: dual 8×28 (1W), single 8×28 (2W), and single 16×28 (1W).

For use with: 3732



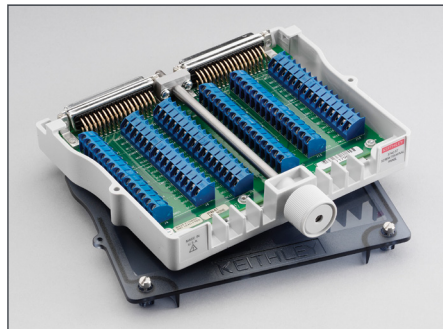
7078-TRX-BNC: 3-slot male triax to BNC adapter for use with 7072 Semiconductor Matrix Card and 4801 cables.

For use with: 4210-CVU, 4801, 6482, 6487, 6514, 6517A, 6517B, 7072, 7072-HV



3731-ST: Screw Terminal Block.

For use with: 3731



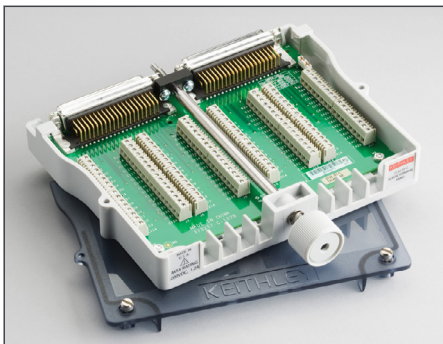
3740-ST: Screw Terminal Block.

For use with: 3740



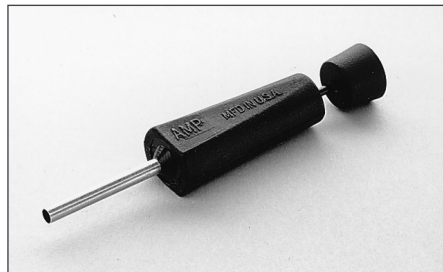
7078-TRX-GND: 3-slot male triax to female BNC adapter (guard removed) for adapting non-guarded measurements to the 7072 or 7072-HV Semiconductor Matrix Cards or 8006 or 8008 Test Fixtures.

For use with: Series 2600B, 4801, 6517A, 6517B, 7072, 7072-HV



3732-ST-C: Screw Terminal Block. Enables screw terminal access and additional matrix sizes including: quad 4×28 (1W), dual 4×28 (2W), single 4×56 (2W), dual 4×56 (1W), and single 4×112 (1W).

For use with: 3732



7074-CIT: Contact extraction tool for removal of contacts from cables and connectors.

For use with: 7152-KIT, 7152-MTR



7078-TRX-TBC: 3-lug female triax bulkhead connector with cap for assembly of custom panels and interface connections.

For use with: 7078-TRX Cables



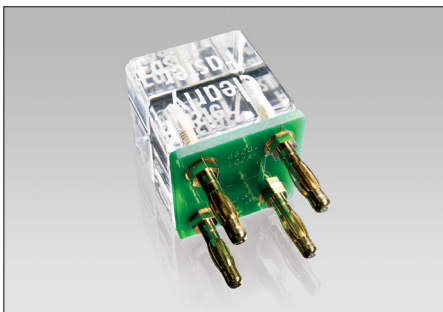
7703-306A: DB50 male connector kit (solder cup) with shell.

For use with: 7701, 7703, 7705, 7709



7709-308A: DB25 male connector kit (solder cup) with shell.

For use with: 7701, 7707, 7709, Series 2600B



8620 Four-Wire DMM Shorting Plug: Provides a low resistance 4-wire short to both observe and cancel DMM offset resistances and voltages to improve measurement accuracies.

For use with: All DMMs, Series 2400, Series 2700, Series 3700A



BG-18: Dual banana to BNC coaxial adapter for adapting connection on instrument with dual banana jack.

For use with: All DMMs, Series 2400



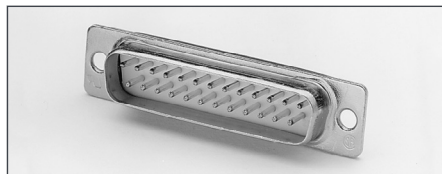
CAP-18: Protective shield/cap for BNC connectors.

For use with: BNC connectors



CAP-31: Protective shield/cap for 3-lug triax connectors.

For use with: 3-lug triax connectors



CS-400: DB25 male solder cup.

For use with: C126-1 cable, 213



CS-458: Interlock connector kit to mate with 6517-ILC-3.

For use with: 6517-ILC-3



CS-565: Female BNC to female BNC adapter with 50 Ω nominal impedance.

For use with: 4200A-SCS, BNC interconnect



CS-630: 3-lug female triax bulkhead connector for soldered connection. Mates with CS-631.

For use with: Fixtures, 6487, 6517A, 6517B



CS-631: 3-slot male triax cable mount connector for use with SC-22 cable. Mates to 7072 and 8006.

For use with: 4200A-SCS, SC-22 cable



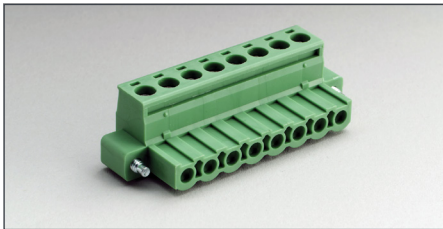
CS-701: BNC tee adapter (female, male, female).

For use with: 4200A-SCS



CS-719: 3-lug triax jack receptacle.

For use with: 4200A-SCS



CS-846: Eight position connector with screw terminals for connection to test leads.

For use with: 230x, 2510, 2510-AT



CS-1247: SMA female to BNC male adapter

For use with: 4200A-SCS



CS-1249: SMA female to SMB plug adapter

For use with: 4200A-SCS



CS-1252: SMA male to BNC female adapter

For use with: 4200A-SCS



CS-1281: SMA female to SMA female adapter

For use with: 4200A-SCS



CS-1305: Interlock connector to mate with 6517B.

For use with: 6517B



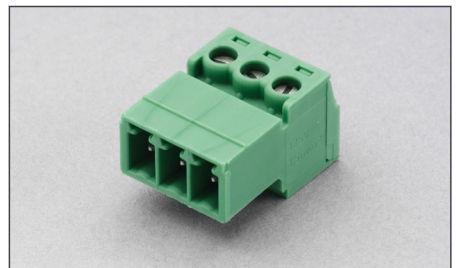
CS-1390: Male LEMO triax to female SMA adapter.

For use with: 4200A-SCS



CS-1391: SMA tee adapter (female-male-female)

For use with: 4200A-SCS



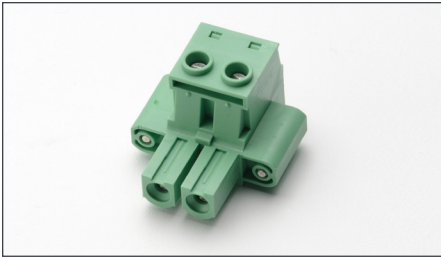
CS-1423-3: Miniature mating connector used as a ground connector for the 2635B and 2636B.

For use with: 2635B, 2636B



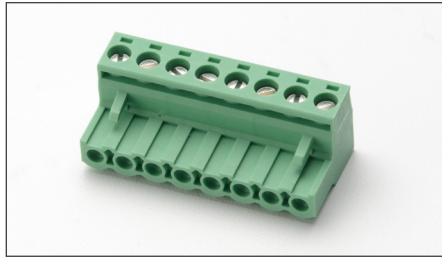
CS-1479: SMA male to BNC male adapter.

For use with: 4200A-SCS



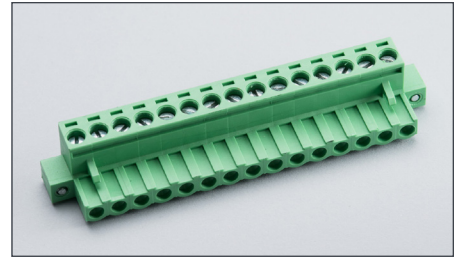
CS-1592-2: 2-pin male screw terminal connector plug. Rated 50 A. Mates with the CS-1626-2 screw terminal block.

For use with: 2651A



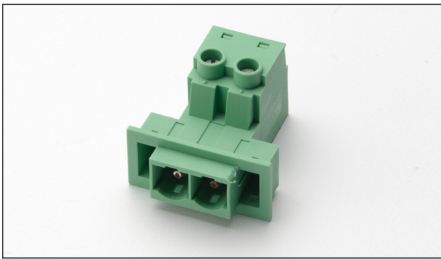
CS-1629-8: 8-pin female cable termination block.

For use with: 2651A



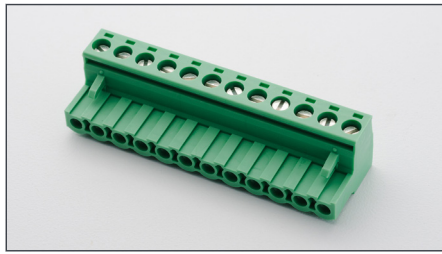
CS-1655-15: 15-pin rear panel output connector.

For use with: 2200-30-1, 2220J-30-1, 2230-30-1, 2230J-30-1



CS-1626-2: 2-pin female screw terminal connector block. Rated 50 A. Mates with CS-1592-2 screw terminal connector.

For use with: 2651A



CS-1638-12: 12-pin rear panel output connector.

For use with: 2200-20-5, 2200-30-5, 2200-32-3, 2200-60-2, 2200-72-1

Contact Information:

Australia 1 800 709 465
Austria* 00800 2255 4835
Balkans, Israel, South Africa and other ISE Countries +41 52 675 3777
Belgium* 00800 2255 4835
Brazil +55 (11) 3530-8901
Canada 1 800 833 9200
Central East Europe / Baltics +41 52 675 3777
Central Europe / Greece +41 52 675 3777
Denmark +45 80 88 1401
Finland +41 52 675 3777
France* 00800 2255 4835
Germany* 00800 2255 4835
Hong Kong 400 820 5835
India 000 800 650 1835
Indonesia 007 803 601 5249
Italy 00800 2255 4835
Japan 81 (3) 6714 3086
Luxembourg +41 52 675 3777
Malaysia 1 800 22 55835
Mexico, Central/South America and Caribbean 52 (55) 88 69 35 25
Middle East, Asia, and North Africa +41 52 675 3777
The Netherlands* 00800 2255 4835
New Zealand 0800 800 238
Norway 800 16098
People's Republic of China 400 820 5835
Philippines 1 800 1601 0077
Poland +41 52 675 3777
Portugal 80 08 12370
Republic of Korea +82 2 565 1455
Russia / CIS +7 (495) 6647564
Singapore 800 6011 473
South Africa +41 52 675 3777
Spain* 00800 2255 4835
Sweden* 00800 2255 4835
Switzerland* 00800 2255 4835
Taiwan 886 (2) 2656 6688
Thailand 1 800 011 931
United Kingdom / Ireland* 00800 2255 4835
USA 1 800 833 9200
Vietnam 12060128

* European toll-free number. If not accessible, call: +41 52 675 3777

Rev. 02.2022



Find more valuable resources at [TEK.COM](https://www.tek.com)

Copyright © Tektronix. All rights reserved. Tektronix products are covered by U.S. and foreign patents, issued and pending. Information in this publication supersedes that in all previously published material. Specification and price change privileges reserved. TEKTRONIX and TEK are registered trademarks of Tektronix, Inc. All other trade names referenced are the service marks, trademarks or registered trademarks of their respective companies.

100622 SBG 1KW-73965-1

