

# WVR7120, 7020 & 6020 Waveform Rasterizer Fact Sheet

## Multi-format, Multi-standard Monitoring and Measurement Solutions

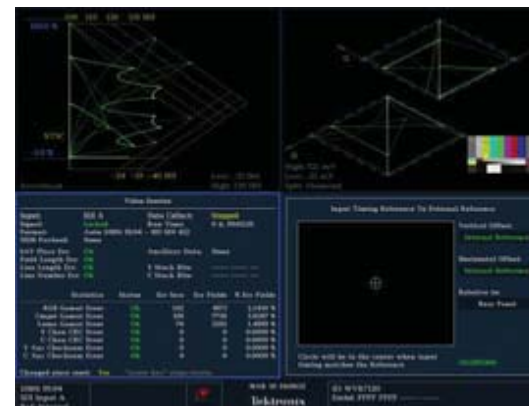


### Features

### Benefits

Audio Display and Session Screens	Audio Loudness Monitoring and Trend Charts
ANC Data Inspector	Ensure the accuracy of ANC Data by automatically detecting and displaying data types and status in a user definable template (WSS, Video Index, AFD and Dolby metadata)
Exclusive Tektronix Gamut displays	Simplify compliance across formats and color spaces using the Diamond, Split Diamond and Arrowhead displays
AV Delay Measurement	Help prevent Lip-Sync problems with a fast, accurate and repeatable out of service AV delay measurements
Multiple Closed Caption Display	Simultaneously monitor closed caption in multiple languages and decode or display both SD (CEA608) & HD (CEA708) Closed Caption at the same time.
10,000 Event Error Log	Run very long sequences or multiple pass evaluations and collect time based error summaries for later review
Eye / Jitter Measurements and Analysis	Advanced tools for automated measurement of rise/fall time, overshoot/undershoot, eye amplitude and jitter waveform increase diagnostic efficiency and help maintain QoS

Advanced tools simplify your digital transition



FlexVu allows flexible tiled displays to optimize efficiency

### Intuitive See & Solve™ Capabilities

- FlexVu™ technology - Powerful tiling flexibility
- Common displays for all supported formats [audio, Gamut, timing, sessions ...] facilitate easy skills transfer
- Timing Display – facility timing made easy
- Comprehensive alarm and status displays

### Support for Emerging Technologies

- Field upgradeable modular support of Dual-link, HD SDI, SD SDI and Analog Composite
- Dual-link support for all SMPTE 425M 372M formats and 352M payload identification
- 2K XYZ color space and selectable display of alpha channel

# WVR7120, 7020 & 6020 Multi-Format Waveform Rasterizer

## Key Specifications and Ordering Information



Options Availability		7120	7020	6020
<b>Video</b>				
SD	SD video monitoring	included standard on all models		
HD	HD video monitoring	√	√	
DL <sup>2</sup>	Dual-Link Video Monitoring	√	√	
CPS	Composite analog video monitoring	√	√	√
<b>Audio</b>				
AD	Audio Loudness Monitoring and Trend Charts	√	√	√
DDP	Dobly D, Dolby E, Dolby Plus, Analog and Digital (Embedded and AES) Audio	√	√	√
<b>Measurement &amp; Analysis</b>				
SIM	Simultaneous A/B Input	√		
AVD <sup>1</sup>	Audio-video Delay Measurement	√		
EYE	Eye pattern display, cable length and Jitter measurements	√		
PHY	Eye Option plus automated eye measurements and jitter waveform display	√		

Service Option Description			
C3	Calibration Service 3 Years	R3	Repair Service 3 Years
C5	Calibration Service 5 Years	R5	Repair Service 5 Years

Models	Key Applications
WFM6020	SD Waveform Rasterizer for basic monitoring of SD and/or Composite Analog Video plus optional AES Digital and Analog Audio
WFM7020	Basic Waveform Rasterizer for applications in Dual-Link, HD, SD and/or Composite Analog Video plus options for Analog, AES Digital and Dolby Audio
WFM7120	High Performance Rasterizer for applications in video systems that involve Dual-Link, HD, SD and/or Composite Video, AES Digital, Analog and/or Dolby Audio. It provides Eye/Jitter Analysis, Simultaneous Inputs and Audio-Video Delay Measurement options for advanced design, engineering and troubleshooting tasks

<sup>1</sup> An Audio Option is required for AVD

<sup>2</sup> Options DL requires option HD