

MTM400A Transport Stream Monitor Fact Sheet

Real time RF monitoring tools for broadcasters and network operators



Features

Benefits

<i>FlexVuPlus™</i> user interface	Improves operational efficiency through a uniquely simplified presentation of video quality and diagnostic information
Hierarchical views of network, media and data information for diagnostics	Accelerates time to insight allowing engineers to rapidly identify the root cause of underlying service problems
Unique dual-level alarming and seven day trending information	Find the problem before your customer does by proactively identifying impending problems
Single scalable solution for real-time transmission monitoring of MPEG transport streams	Tailor capital expenditure with operational growth
Embedded architecture	Ensures high availability with a system designed specifically for continuous 24x7 operation (disk free operation)
MER and EVM measurements	Critical RF measurements provide early indication of signal degradation before any picture impairment is visible to the viewer (MER up to 38 dB typical for COFDM)
Learning Mode	Auto-configuration of monitoring parameters creates true "monitoring by exception" environment

Embedded architecture designed for continuous 24x7 operation



Empower operations staff with concise information

Enables superior QoS

Improved usability

- *FlexVuPlus™* interface is powerful, personal and productive - simplifying DTV monitoring

Confidence Monitoring at the RF Layer

- COFDM
- Turbo 8PSK
- QPSK
- 8VSB

Common measurement engine

- Accelerate time to insight with comprehensive cross layer diagnostic capability
- Real-time monitoring over RF, IP, and ASI interfaces including both SPTS & MPTS support

MTM400A Transport Stream Monitor Fact Sheet

Key specifications and ordering information

MTM400A

MPEG transport stream monitor includes:
1RU chassis fitted with transport stream processor card, manual, rack slides, power cord and license key certificate

Service Options

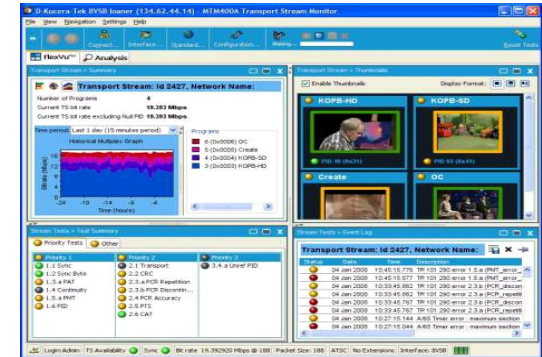
- R3 Repair Service 3 Years
- R5 Repair Service 5 Years

RF Options

- CF COFDM interface
- VS 8VSB interface
- EP QPSK (L-Band) and 8PSK interface and measurement
- QA QAM Annex A interface
- QB2 QAM Annex B interface
- QC QAM Annex C interface

MPEG Options

- 01 Triggered recording capability up to 160 MB
- 02 TS service information analysis (PSI/SI/PSIP/ARIB view)
- 03 Template testing (for user-defined service plan testing)
- 04 In-depth PCR analysis with graphical result views
- 05 Bit rate testing functionality
- 06 Service logging
- 07 IP/RF Polling functionality



Key Applications	Benefits
Extended confidence monitoring	Ensure the highest quality of video content relying on tested industry standard test methodology because the MTM400A makes TR 101 290 Priority 1, 2, and 3 measurements per TR 101 290 recommendations.
Terrestrial distribution	Verify the accuracy of content at unmanned transmitter sites because the MTM400A is designed for 24/7 unattended operation and remote interface.
Satellite uplink monitoring	Ensure the highest levels of quality in the increasing complex world of hybrid uplink facilities by monitoring streams across ASI, RF and IP interfaces in real time.
Cable headend monitoring	Improve operational efficiency and verify content accuracy at multiple unmanned headend sites from local or national operations centers.