



TandemVu™

With the introduction of TandemVu the operator can easily make adjustment within one display for both waveform and vector.

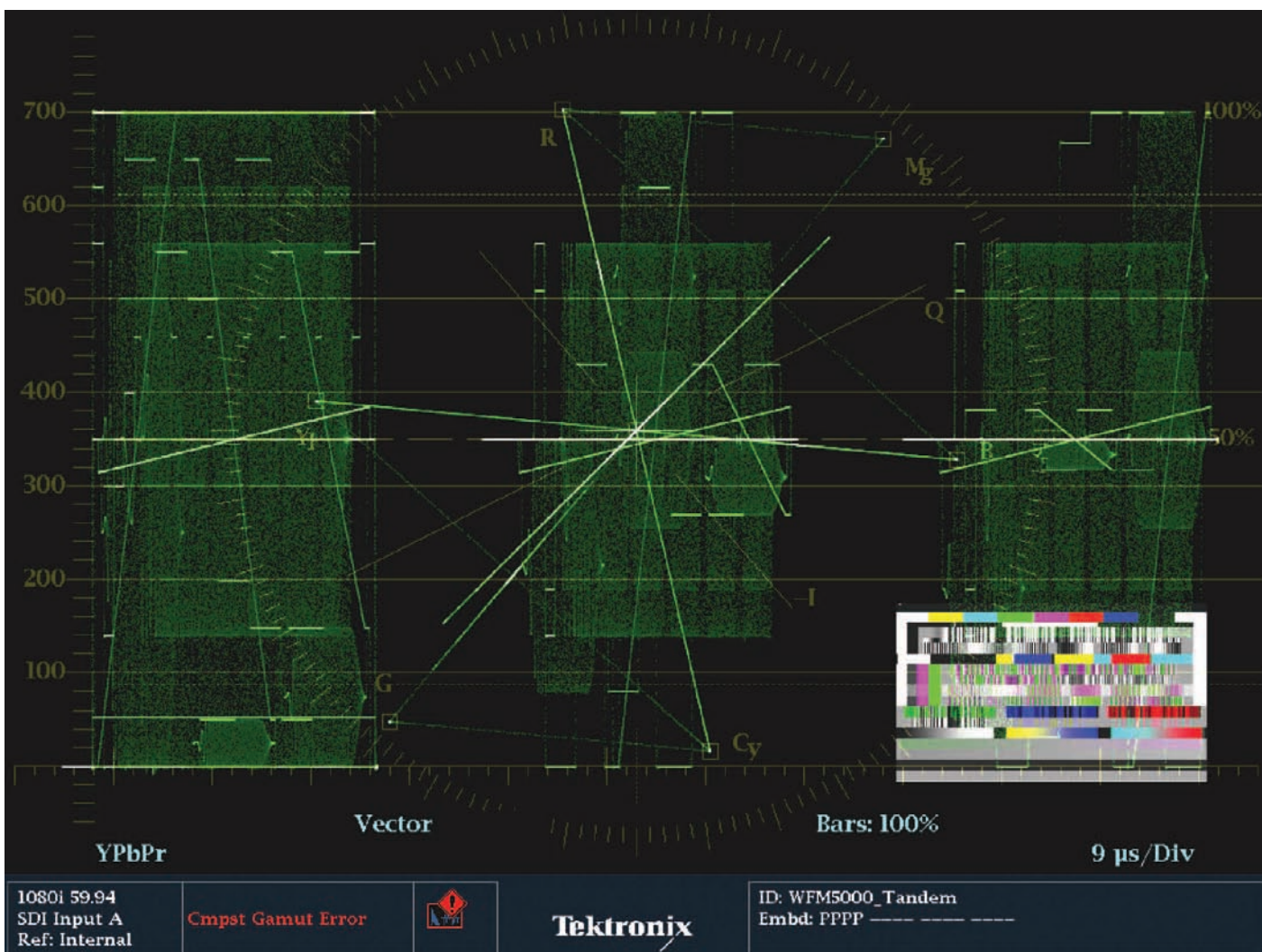


Figure 1.

Summary

The WFM & WVR 5000/4000 Series product is an ideal tool for field production and camera balancing. Previous versions of software only allowed for one trace display plus a thumbnail picture to be viewed. Normal field work and camera balancing

applications typically require the adjustment of the luma and chroma to ensure correct alignment. To do this the operator would have to switch between waveform and vector trace display to make the various adjustment.



Figure 2.

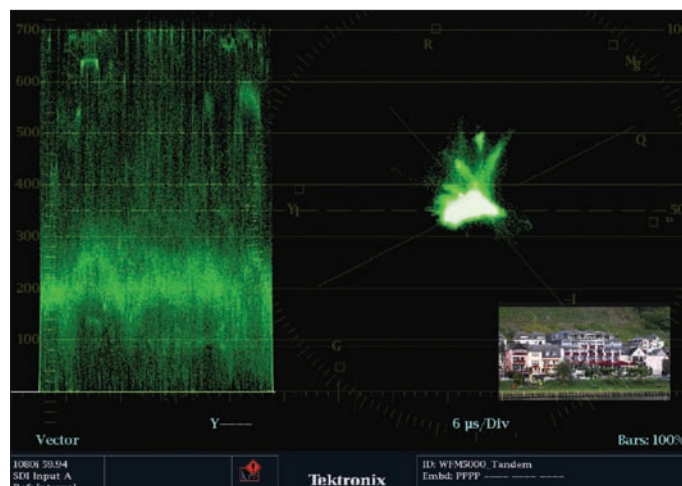


Figure 3.

How To Enable TandemVu

1. Press and hold the WFM or VEC front panel button to display the menu
2. Move up and down the menu using the Arrow Keys or General Knob to the Display Overlay menu Select WFM+VEC

TandemVu should now be active and the standard waveform or vector controls make adjustments to the appropriate display. The user can create a variety of configurations with this mode because each of the traces is independent. One of the applications for camera balancing is to see the Y channel and vector display simultaneously. A preset has been created to allow user to recall this configuration.

TandemVu Preset Y Waveform and Vector

This preset was configured in the following way:

1. Push and Hold WFM to access the menu
2. Turn Off Pb and Pr traces
3. Select Overlay Mode
4. Push and Hold SWEEP to access the menu
5. Select 2 Line
6. Using the H & V knobs move the Y trace to the left until only one Y line is displayed
7. Select VEC

Using the H & V knobs position the vector display on the right hand side.

This preset can be load into the instrument in the following way:

1. Insert USB stick with preset folder loaded into WfmPrst-àWFM5000
 2. Press and Hold Preset to access the menu
 3. Select Import Preset menu
 4. Navigate to Select Source
 5. Select USB Folder which should be WFM5000 if the USB drive mounted correctly
 6. Select Group WFM-VEC and the preset WFM/VEC2T
 7. Select the destination you wish to load the preset, preferable an empty preset location
 8. Navigate to Copy and press SEL
- Finally, navigate to UnMount the USB stick.

References

- WFM5000 and WFM4000 Multi-Format Fact Sheet
- WFM5000 and WFM4000 Data Sheet
- Web Demo
- Product Advisor

The above mentioned documents can be found at:
http://www.tek.com/products/video_test/wfm4000_wfm5000_wvr4000_wvr5000/

Contact Tektronix:

ASEAN / Australasia (65) 6356 3900
Austria +41 52 675 3777
Balkans, Israel, South Africa and other ISE Countries +41 52 675 3777
Belgium 07 81 60166
Brazil +55 (11) 40669400
Canada 1 (800) 661-5625
Central East Europe, Ukraine and the Baltics +41 52 675 3777
Central Europe & Greece +41 52 675 3777
Denmark +45 80 88 1401
Finland +41 52 675 3777
France +33 (0) 1 69 86 81 81
Germany +49 (221) 94 77 400
Hong Kong (852) 2585-6688
India (91) 80-42922600
Italy +39 (02) 25086 1
Japan 81 (3) 6714-3010
Luxembourg +44 (0) 1344 392400
Mexico, Central/South America & Caribbean 52 (55) 54247900
Middle East, Asia and North Africa +41 52 675 3777
The Netherlands 090 02 021797
Norway 800 16098
People's Republic of China 86 (10) 6235 1230
Poland +41 52 675 3777
Portugal 80 08 12370
Republic of Korea 82 (2) 6917-5000
Russia & CIS +7 (495) 7484900
South Africa +27 11 206 8360
Spain (+34) 901 988 054
Sweden 020 08 80371
Switzerland +41 52 675 3777
Taiwan 886 (2) 2722-9622
United Kingdom & Ireland +44 (0) 1344 392400
USA 1 (800) 426-2200
For other areas contact Tektronix, Inc. at: 1 (503) 627-7111
Updated 30 October 2008

For Further Information

Tektronix maintains a comprehensive, constantly expanding collection of application notes, technical briefs and other resources to help engineers working on the cutting edge of technology. Please visit www.tektronix.com



Copyright © 2009, Tektronix. All rights reserved. Tektronix products are covered by U.S. and foreign patents, issued and pending. Information in this publication supersedes that in all previously published material. Specification and price change privileges reserved. TEKTRONIX and TEK are registered trademarks of Tektronix, Inc. All other trade names referenced are the service marks, trademarks or registered trademarks of their respective companies.
02/09 EA/AR 2PW-23365-0

Tektronix[®]

