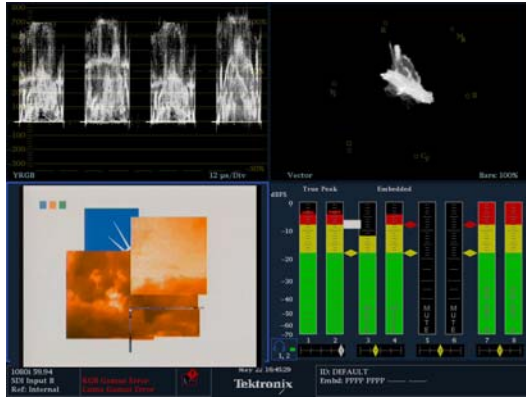


WFM4000/5000 Multi-format Waveform Monitor Fact Sheet

Multi-format, Multi-standard Portable Waveform Monitors



Monitor it your way:

- Quad-Tile
- Single-Tile
- TandemVu®



Portable, affordable and easy to use



**When and where you need it!
In the rack, on the bench, in the field**

Features

Benefits

Features	Benefits
TandemVu™ Display	Streamline the camera set up process with TandemVu. This patented display allows the user to overlay the Waveform & Vector or Waveform & Lightning displays, plus Picture Thumbnail, in a single full tile display
Gamut Displays	Simplifies maintaining compliance across formats and color spaces using the exclusive Tektronix Diamond, Split Diamond, and Arrowhead displays
Exclusive Push Button Thumbnail Picture Feature	Enables quick identification of source content and improved efficiency, no menu navigation required. Helps ensure you are monitoring the correct source
Video & Audio Session Screens & Status Displays	Simplify monitoring tasks with at-a-glance information
AES Audio Inputs	Enables monitoring of discreet or embedded digital audio without the need for additional equipment
Passive Loop-through for HD/SD-SDI (WFM5000) and SD-SDI WFM4000 Inputs	Allow for monitoring the true signal in the path. Does not disrupt the signal flow if the unit is turned off

Portable

- Approximately 6 lbs. 2.7 kg
- AC/DC/Battery operation
- Carry Case

Easy to Use

- Quickly and easily adjust video or audio content from multiple signal sources
- Similar user interface and menu structure across our performance waveform monitor range

WFM5000/4000 Multi-Format Waveform Monitor

Key Specs and Ordering Information

Ordering Information			
WFM5000	Portable Waveform Monitor with support for HD and SD Serial Digital video monitoring and HD/SD format auto-detection. Unit includes integrated high-luminosity display and digital audio monitoring for 16 embedded channels (up to 8 simultaneously) and 2 AES/EBU channels.		
WFM4000	Portable Waveform Monitor with support for SD serial digital video monitoring. Unit includes integrated high-luminosity display and digital audio monitoring for 16 embedded channels (up to 8 simultaneously) and 2 AES/EBU channels.		
Accessories			
WFM50FGM	Battery Adapter – Anton Bauer		
WFM50FVM	Battery Adapter – Sony / IDX		
WFM50FSC	Soft carrying case		
WFM50F01	Hard carry case		
WFM50F02	Dual rack cabinet for WFM4000/5000 side by side		
WFM50F03	Dual rack cabinet for use with WFMxx20 side by side		
Physical Characteristics (WFM only)			
Weight	Height	Width	Depth
1.6 Kg	132 mm	213 mm	140 mm
3.44 lbs.	5.2 in.	8.4 in.	5.5 in.

Service Option Description	
C3	Calibration Service 3 Years
C5	Calibration Service 5 Years
R3	Repair Service 3 Years
R5	Repair Service 5 Years



Key Applications	Benefits
Content Creation	Verify content quality quickly and easily prior to distribution or ingest
ENG & Mobile Applications	Light weight, short depth with flexible power options without compromising performance
Camera Alignment	Minimize costly rework in Post Production by performing camera alignment on site
Audio Compliance Verification	Audio editors and operators can ensure compliance of digital audio signals with Audio Bars & Lissajous displays