

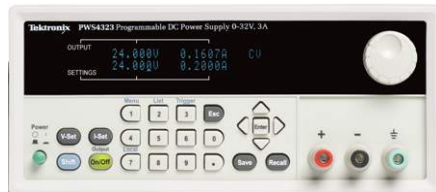
# PWS4000 Series vs. Agilent E364XA Series

## Competitive Fact Sheet

### Ease of Use

#### Tektronix PWS4000 Series

- ✓ Displays both settings and meter readings simultaneously
- ✓ Password-protected front-panel lockout
- ✓ Quick setup with both direct-entry numeric keypad and rotary knob
- ✓ 40 User-definable setup memories
- ✓ USB interface standard, with optional GPIB



#### Agilent E364XA Series

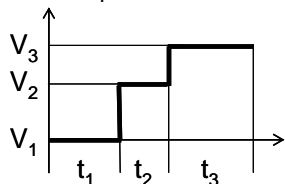
- ✗ Displays settings or meter readings, but not at the same time
- ✗ No front-panel lockout
- ✗ No numeric keypad
- ✗ 5 setup memories
- ✗ No USB interface. GPIB and RS-232 standard.



### Performance

#### Tektronix PWS4000 Series

- ✓  $\pm 0.02\% + 3 \text{ mV} / \pm 0.05\% + 2 \text{ mA}$  Meter Accuracy
- ✓ 1mV / 0.1 mA meter resolution
- ✓ List mode feature for storing and executing test sequences of up to 80 steps



#### Agilent E364XA Series

- ✗  $< 0.05\% + 2 \text{ counts} / < 0.15\% + 5 \text{ mA}$  Meter Accuracy
- ✗ 10mV/1mA meter resolution
- ✗ No list mode

### Key Specifications/Feature Comparison

	Tektronix PWS4000 series	Agilent E364XA series
<b>Basic Voltage Accuracy</b>	✓ $\pm 0.03\%$	✗ $\pm 0.05\%$
<b>Meter Basic Current Accuracy</b>	✓ $\pm 0.05\%$	✗ $\pm 0.2\%$
<b>Load &amp; Line regulation, Voltage</b>	✓ $< 0.01\% + 2 \text{ mV}$	✓ $< 0.01\% + 3 \text{ mV}$
<b>Meter resolution</b>	✓ 1 mV / 0.1mA	✗ 10 mV / 1 mA
<b>Setup Memories</b>	✓ 40	✗ 5
<b>Front panel lockout</b>	✓ Password protected	✗ No
<b>List mode, number of sequences</b>	✓ 7 sequences, up to 80 steps each	✗ No

# PWS4000 Series vs. Agilent E364XA Series

## Competitive Fact Sheet

### Higher Power



**Tektronix PWS4000 Series**

	Voltage Range	Current Range	Max Power
<b>PWS4205</b>	0 – 20 V	0 – 5 A	100 W
<b>PWS4305</b>	0 – 30 V	0 – 5 A	150 W
<b>PWS4323</b>	0 – 32 V	0 – 3 A	96 W
<b>PWS4602</b>	0 – 60 V	0 – 2.5 A	150 W
<b>PWS4721</b>	0 – 72 V	0 – 1.2 A	86 W



**Agilent E364XA Series**

	Voltage Range	Current Range	Max Power
E3640A	0 – 8 V/ 0 – 20 V	0 – 3 A/ 0 – 1.5 A	24 W/ 30 W
E3641A	0 – 35 V/ 0 – 60 V	0 – 0.8 A/ 0 – 0.5 A	28 W/ 30 W
E3642A	0 – 8 V/ 0 – 20 V	0 – 5 A/ 0 – 2.5 A	40 W/ 50 W
E3643A	0 – 35 V/ 0 – 60 V	0 – 1.4 A/ 0 – 0.8 A	49 W/ 48 W
E3644A	0 – 8 V/ 0 – 20 V	0 – 8 A/ 0 – 4 A	64 W/ 80 W
E3645A	0 – 35 V/ 0 – 60 V	0 – 2.2 A/ 0 – 1.3 A	77 W/ 78 W

### Warranty Duration

#### Tektronix PWS4000 Series

#### Agilent E364XA Series

✓ 3-year warranty

✗ 1-year warranty



### Connect Your Bench for Powerful Debug

- ✓ PWS4000 Series includes a copy of National Instruments LabVIEW SignalExpress™, Limited Tektronix Edition Software.
- ✓ Provides a common software interface for Tektronix bench instruments.
- ✓ Remotely control your instruments, automate measurements and analyze data across multiple instruments, capture and save results.
- ✓ PWS4000 Series is designed to stack neatly with Tektronix digital multimeters and frequency counter/analyzers.

