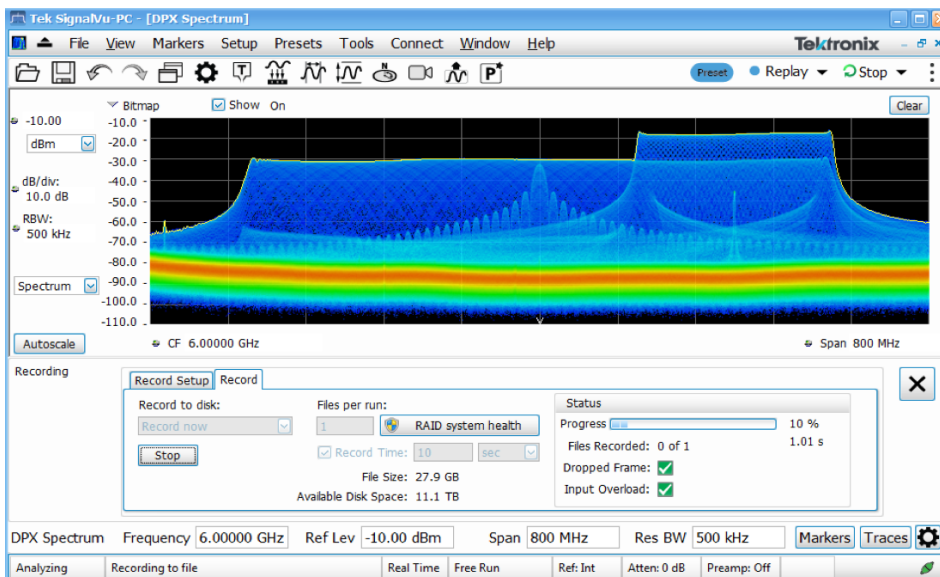


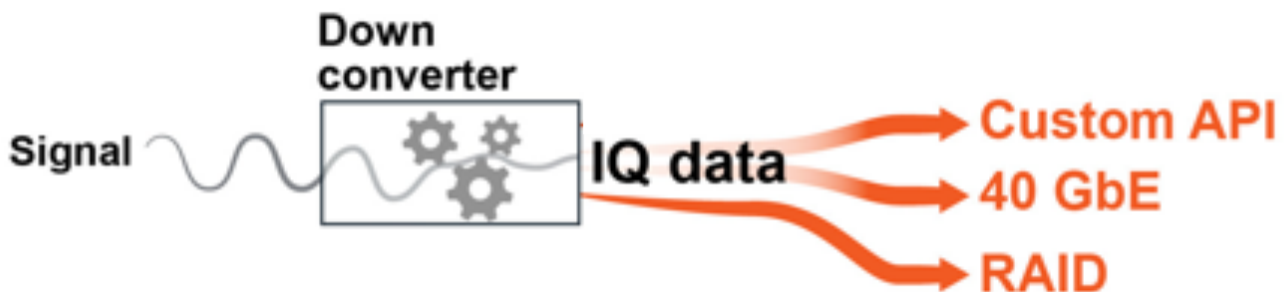
Real-Time Recording and Signal Processing with IQFlow™

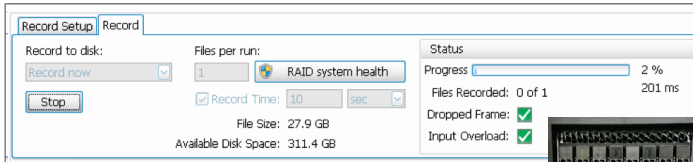
Tektronix Real-Time Spectrum Analyzer RSA7100A

The RSA7100A's real-time analysis for live monitoring and recording of events ensures that you are getting the data you need from your time-consuming test scenarios.



IQFlow™ provides IQ streaming for the RSA7100A. It allows you to use the analyzer as a down-converter and then pass the down-converted baseband IQ signals to external equipment or locations for either additional processing or storage. IQFlow™ includes options for simultaneous streaming to interfaces such as Custom API, 40 GbE, and RAID. This makes it possible to perform real-time digital signal processing (DSP) and support hardware-in-the-loop (HIL) testing for radar and electronic-warfare (EW) systems.



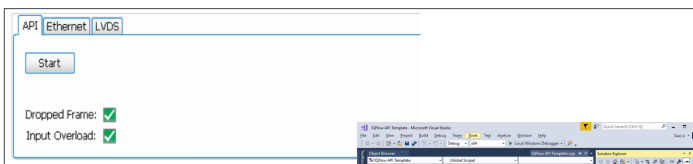


STREAMING IQ TO RAID →

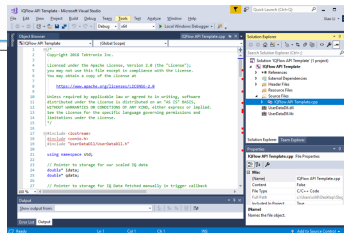


RAID

The RSA7100A wideband signal analyzer offers real time spectrum analysis up to 800 MHz bandwidth. Simultaneously, the internal RAID in the RSA7100 controller can capture over 2 hours (maximum of 2.75 hours) at full 800 MHz bandwidth. Longer recording times are available at reduced bandwidths.

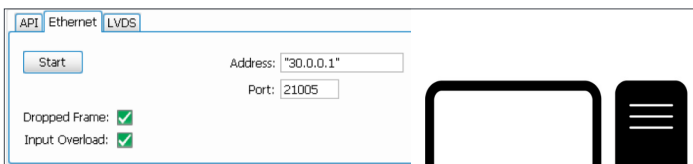


STREAMING IQ TO CUSTOM APPLICATION →

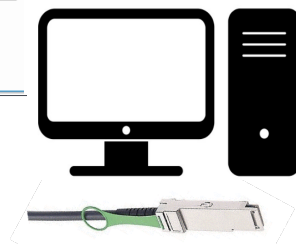


Custom API

This API enables IQ data blocks with associated timestamps and triggers to be streamed to your custom application. User applications can execute on the RSA7100A, run proprietary DSP algorithms, and validate the quality of IQ data streams in real time. For instance, user applications may display important measurements during a test event.



STREAMING IQ WITH ETHERNET →



40 GbE

With this RSA7100A interface, you can stream IQ data to a 40 GbE receiver on a client. This gives you the ability to acquire data at full 800 MHz bandwidth.

