

Contents

1.			P.1
2			P.2
3	BNC		P.2
4			P.2
5			P.3
6		3	P.4
7.	3		P.4
8			P.4
9			P.5
10.			P.5
11.			P.6
12	2		P.7
13	2		P.7
14.	2		P.8
15			P.8
16			P.9
17.			P.11
18			
	P.12		
19.	USB		P.13
20.	TDS	Ref	P.14
21.			P.14
22	PC		P.15
23	PictBridge		P.17
24			
P.19			
25.		TCP305/TCPA300	P.21

1.

3

2-3

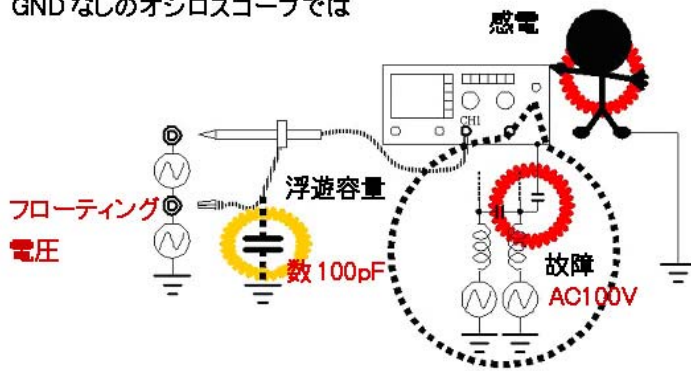


3



2-3

GNDなしのオシロスコープでは



100kHz

300Vrms 300V

100ms

100kHz 3VHz

20dB/decade

3VHz

13VpeakAC

2

TDS2000B

5

OK



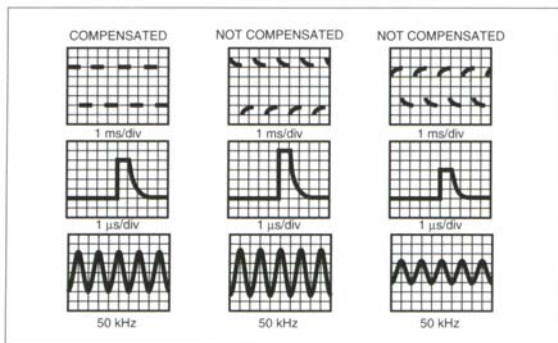
3 BNC

BNC



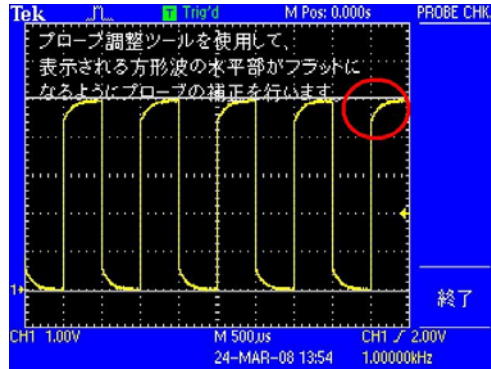
4

101



1Q1

TDS2000B



5



6

3

3

7.

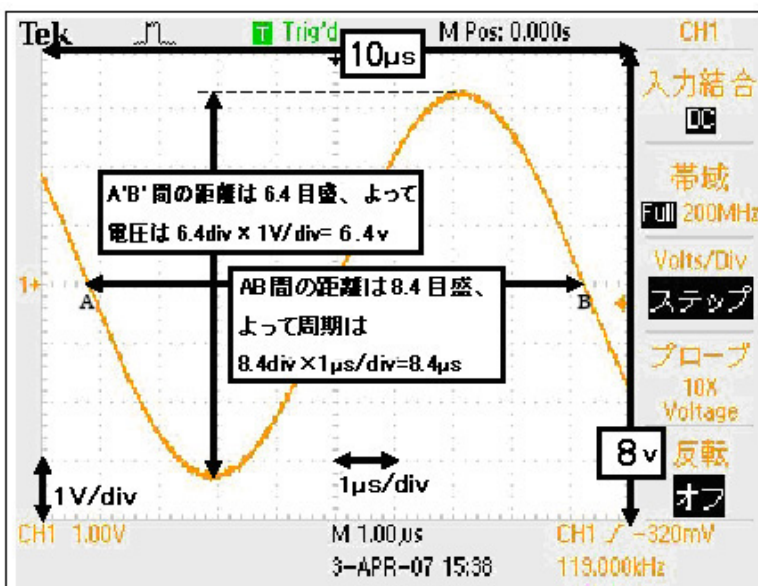
3

TDS2000B

3



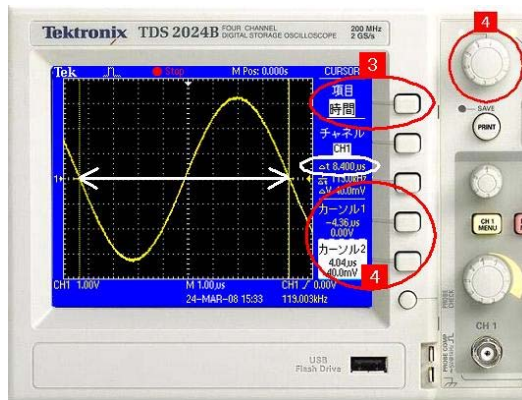
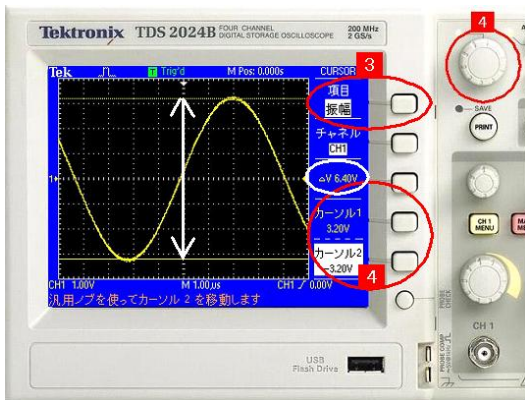
8



9.

2

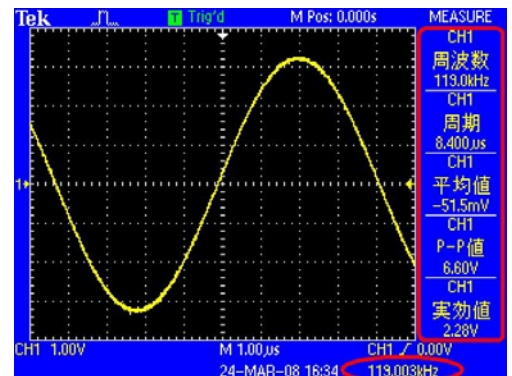
2



10

P-P

TDS2000B



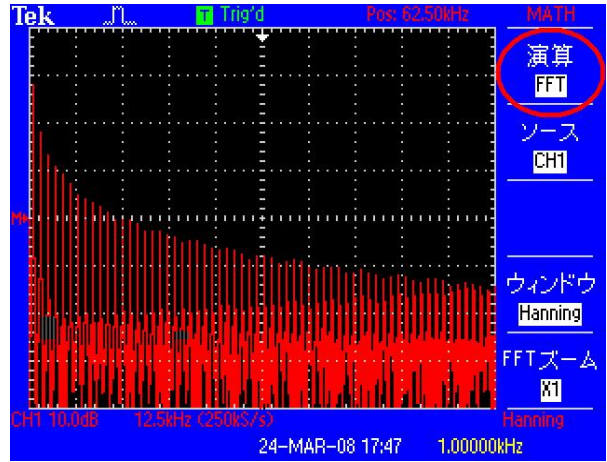
11.

FFT

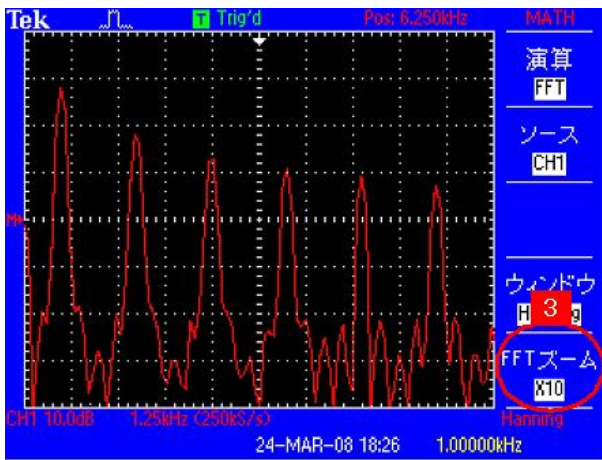
1 MATH MENU

CH1

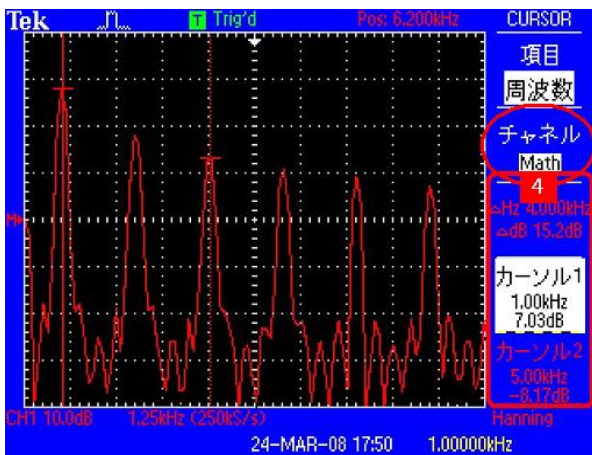
2 FFT



3 FFT



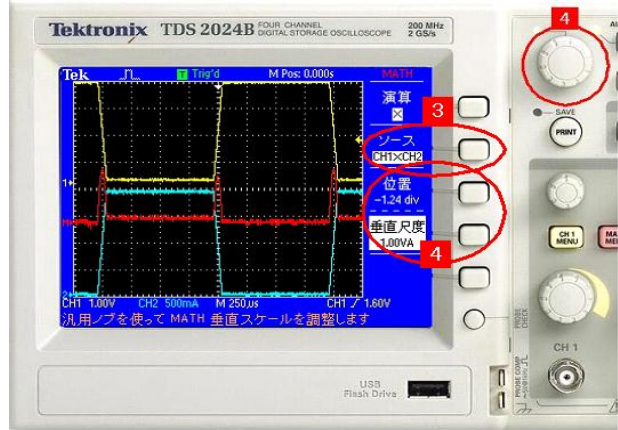
4



12

2

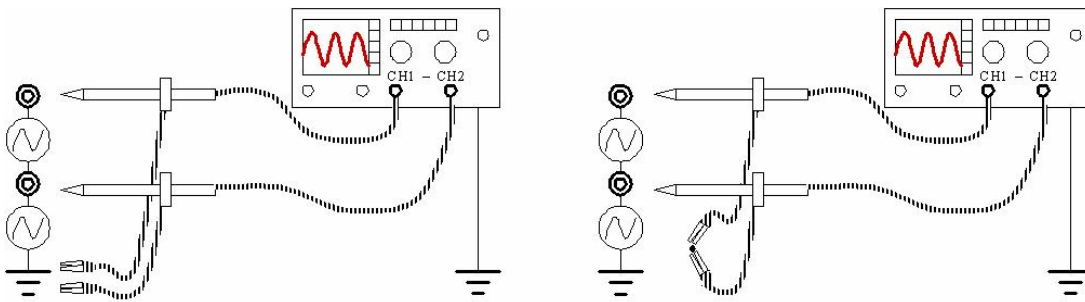
- 1 MATH MENU
- 2 X
- 3 CH1 CH2
- CH1 CH2
- 4



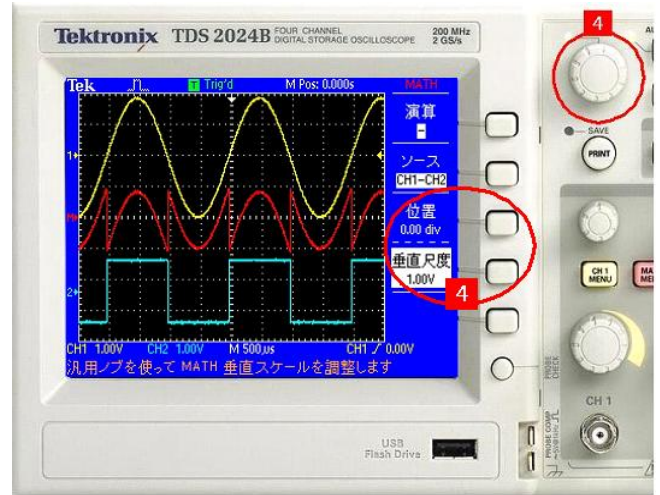
13

2

2



- 1 MATH MENU
- 2
- 3 CH1 CH2
- CH1 CH2
- 4



14

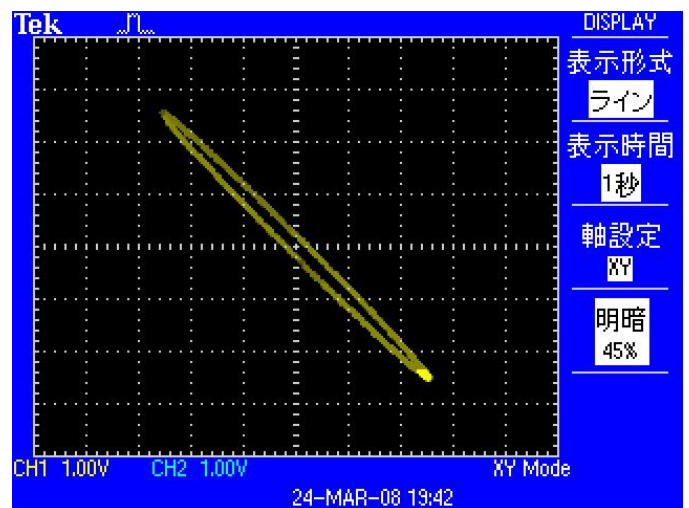
CH1

CH 2

CH 1

CH 2

XY



15

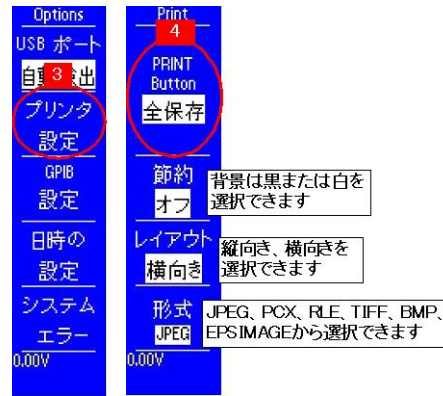
(1) USB

(2)

(3)

(4) PRINT BUTTON

LED



(5) PRINT

PRINT



16

(1) USB

(2)

(3)

(4) PRINT BUTTON

LED



Options
 USB ポート
 自出
 プリンタ
 設定
 GPIB
 設定
 日時の
 設定
 システム
 エラー
 0.00V

Print
 4
 PRINT
 Button
 画像保存
 節約
 オフ
 レイアウト
 設定
 横向き
 形式
 JPEG
 0.00V

背景は黒または白を
 選択できます

縦向き、横向きを
 選択できます

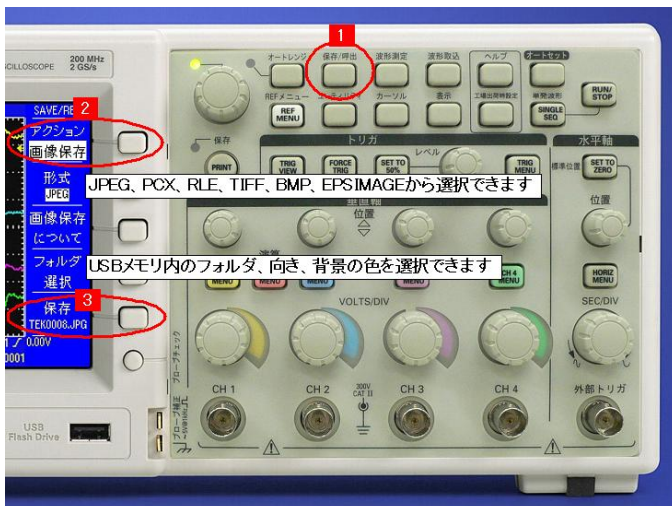
JPEG、PCX、RLE、TIFF、BMP、
 EPS IMAGEから選択できます

(5) PRINT

PRINT



SAVE/RECALL



JPEG、PCX、RLE、TIFF、BMP、EPS IMAGEから選択できます

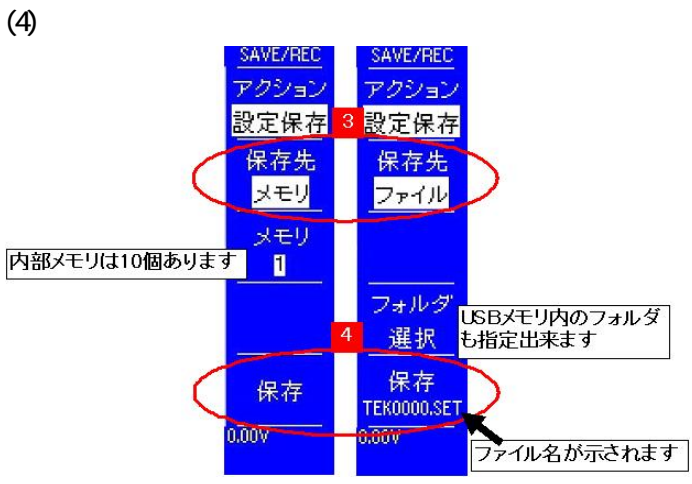
USBメモリ内のフォルダ、向き、背景の色を選択できます

17.

- (1) /
- (2)



(3) USB



- (1) /
- (2)



(3) Ref USB

(4) CHx MATH REFx

(5)

SAVE/REC	SAVE/REC	
アクション	アクション	
波形保存	波形保存	3
保存先	保存先	
Ref	ファイル	
ソース	ソース	4
CH1	CH1	
宛先	フォルダ	
RefA	選択	5
保存	保存	
0.00V	TEK0000.CSV	
	0.00V	

REFは2個または4個あります

USBメモリ内のフォルダも選択できます

ファイル名が示されます

19. USB

(1) USB /

(2)



(3)

(4)

(5)

REFx

(6)



20

TDS2000B

Ref

(1) REF MENU

(2) Ref x



21.

(1) /

(2)

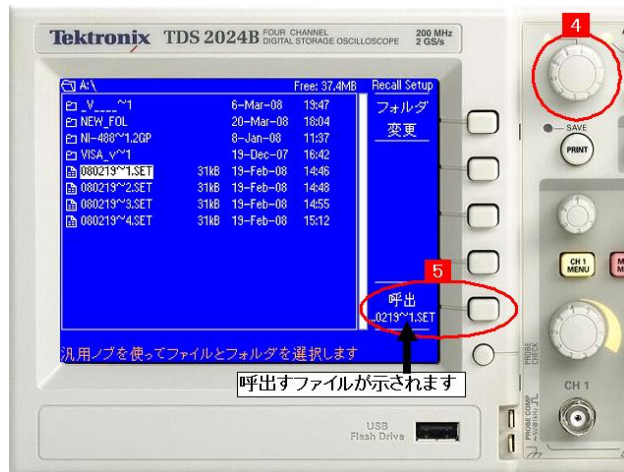


(3) USB

(4) 10

USB

(5)

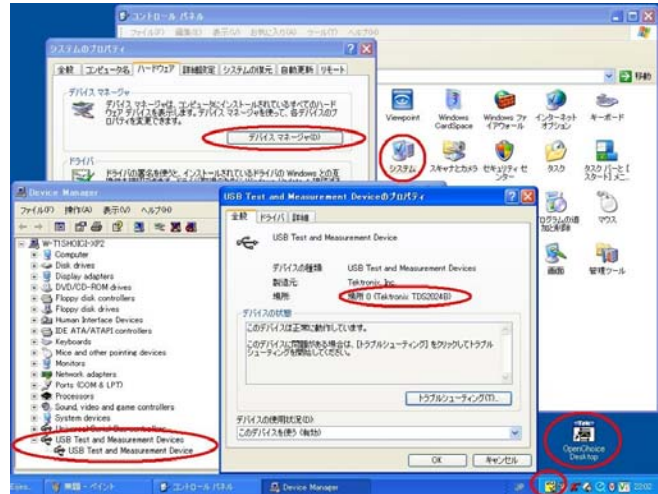


22 PC

- (1) OpenChoiceDeskTop TDSPCS1 TekVISA PC
- (2) TDS2000B PC ON
- USB
- (3) TDS2000B PC USB

USB Test and Measurement Device

Tektronix TDS2000B

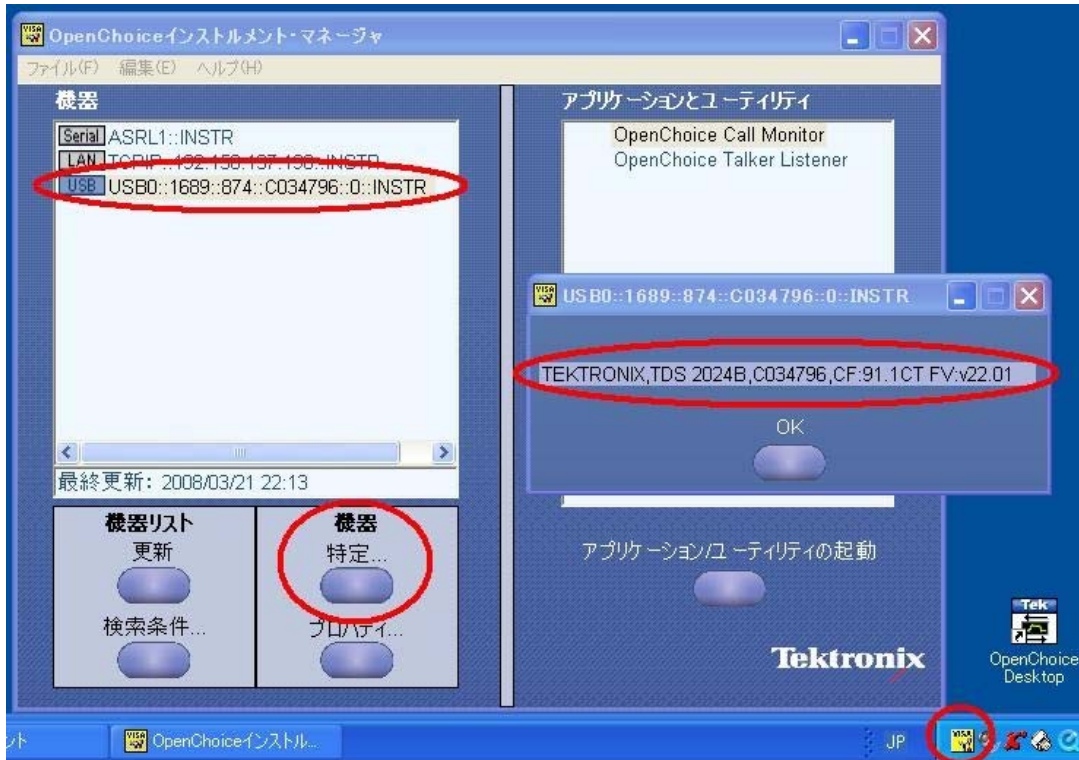


- (4) TekVISA

OpenChoice

"USBO "

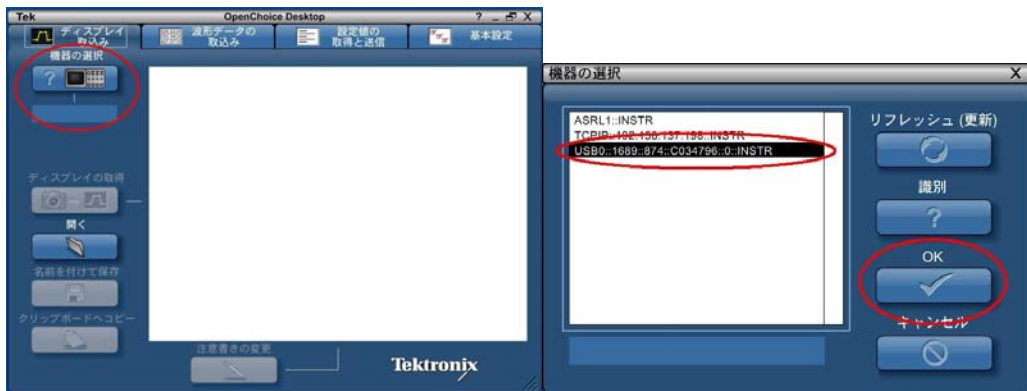
TDS2000B



(5) OpenChoiceDeskTop

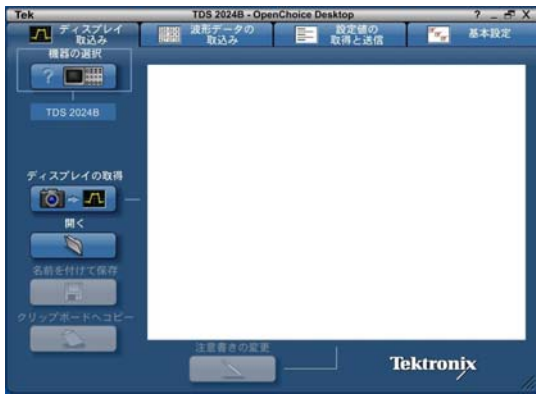


(6) "USB0 " OK



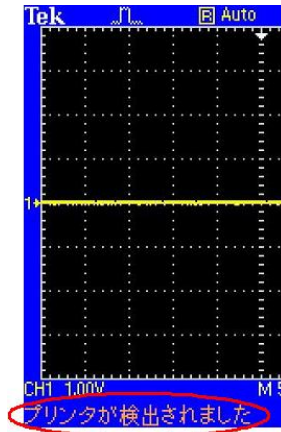
(7) TDS2000B

PC



23. PictBridge

- (1) TDS2000B USB
- USB
- (2) PictBridge



- (1)
- (2)
- (3)
- (4) PRINT BUTTON

LED

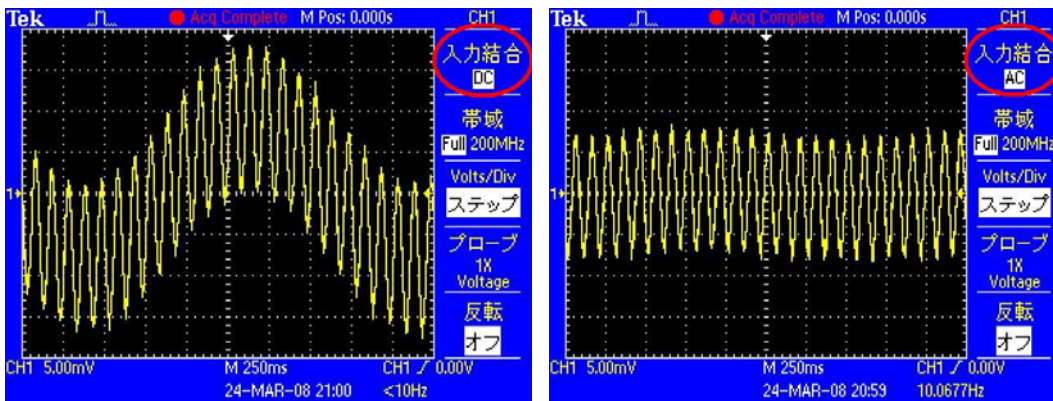


(5) PRINT

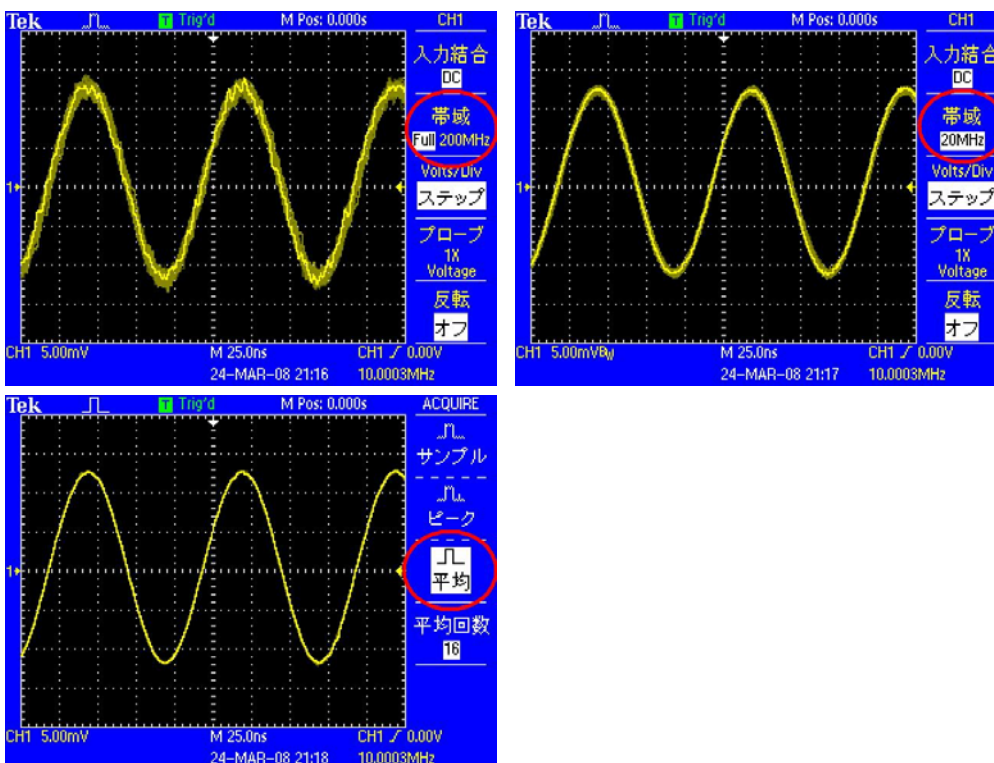
PRINT



AC

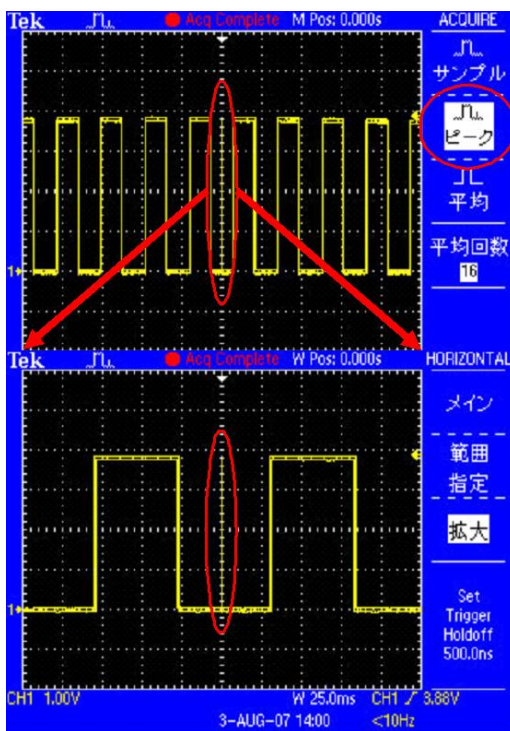
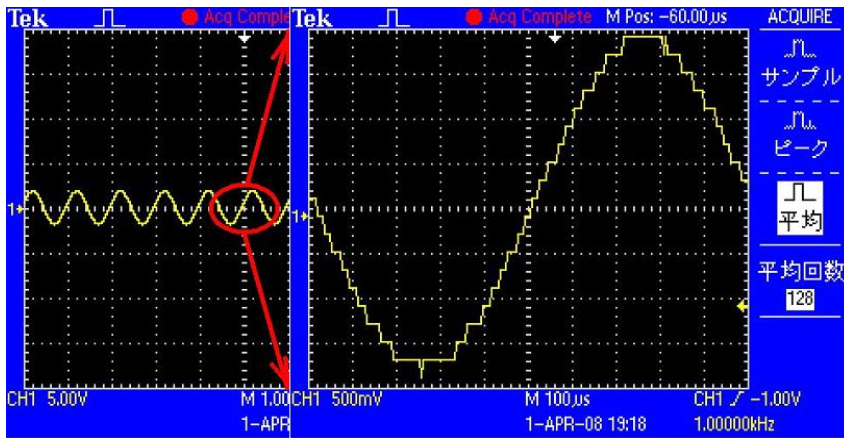


20MHz



AD

TDS2000B



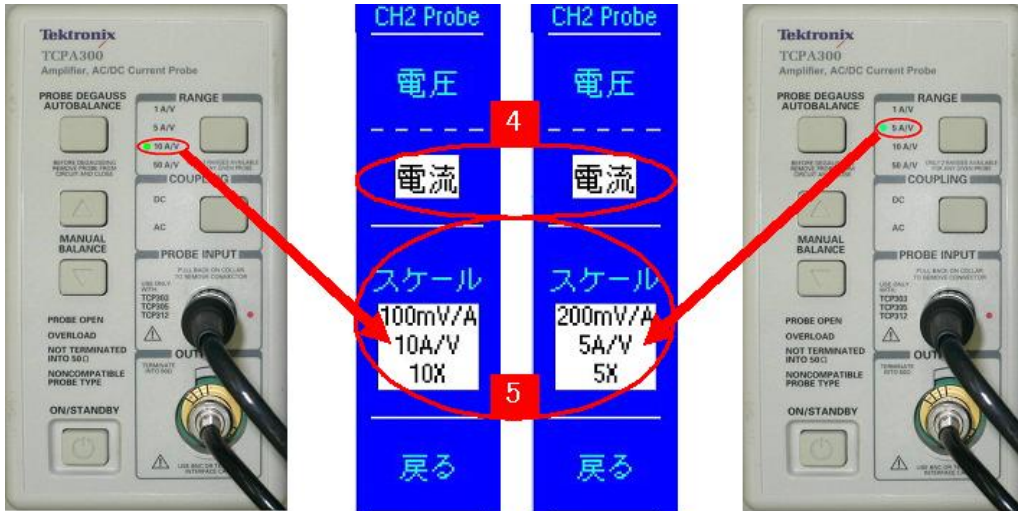
- (1) TCP305 TCPA300
- (2) TDS2000B BNC 50
- (3) TCPA300 TDS2000B BNC



- (1) TDS2000B CH2 MENU
- (2) DC AC TCPA300 COUPLING AC
- (3) TDS2000B AC



- (4) TCPA300 RANGE 5A/V TDS2000B 200mV/A 5A/V 5X
- 10mA/div 25A/div TCPA300 RANGE 10A/V TDS2000B
- 0.1V/A 10A/V 10X 20mA/div 50A/div



PROBE DEGAUSS AUTOBALLANCE

LED

LED

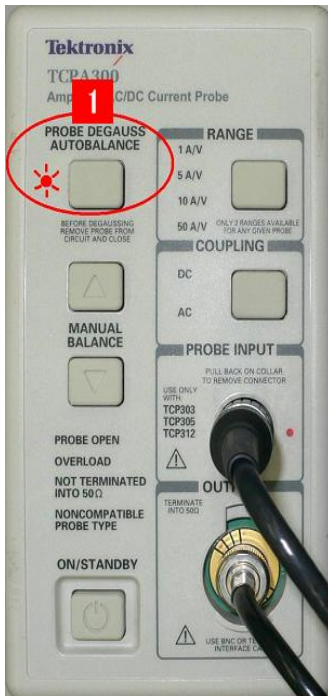
20

(1)

TCPA300

PROBE DEGAUSS AUTOBALLANCE

LED



(2)

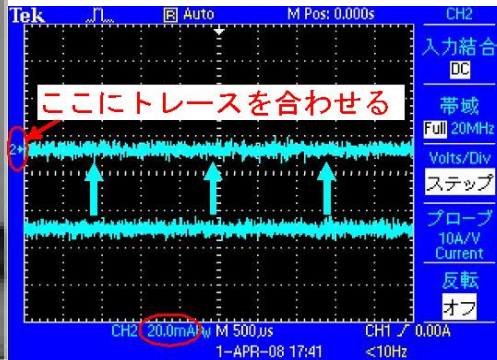
TCPA300 MANUAL BALANCE

TDS2000B

PROBE

DEGAUSS AUTOBALLANCE

LED



- (1)
- (2)
- (3)

50A

10kHz 30A 100kHz 20A 1MHz 10A