



TekScope PC Waveform Analysis Software

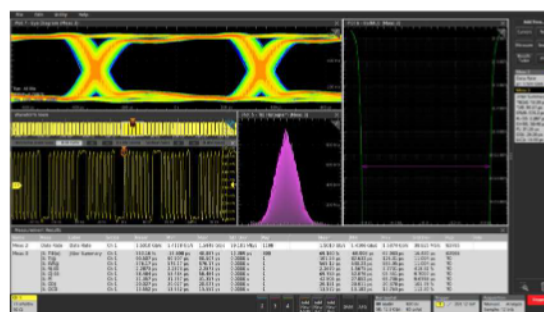


Get the analysis capability of our award-winning oscilloscopes right on your PC. Analyze waveforms anywhere, anytime. The basic version is available free of charge and lets you scale and measure waveforms. Purchased options add advanced capabilities such as multi-scope analysis, serial bus decoding, power analysis and jitter analysis.



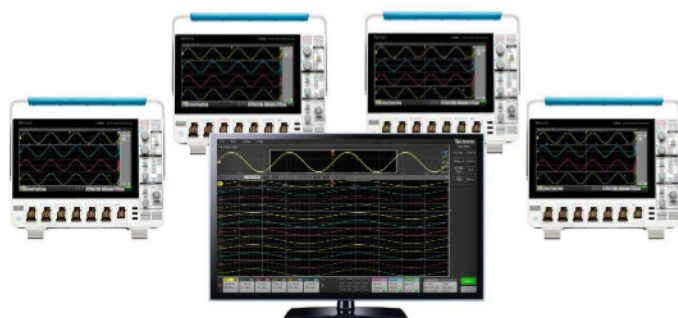
Greater productivity and convenience

- Analyze data at your desk, at home, or on the road.
- Nothing to learn. It operates just like your oscilloscope.
- Analyze waveform data from most oscilloscopes on your PC.
- Remotely connect to newer Tektronix oscilloscopes to view, acquire and analyze waveforms in real-time.



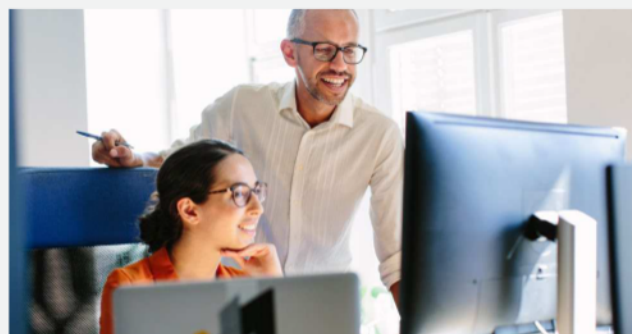
Add analysis capabilities

- Utilizes the award-winning 4/5/6 Series MSO user interface.
- Augment on-scope capabilities with additional capabilities like bus decoding, jitter analysis, and power measurements.
- Flexible licensing makes it easier to add the analysis functions you need, when you need them.



Sync data from multiple scopes

Pan, zoom, rearrange and make measurements on signals acquired on up to four different oscilloscopes.



Analyze collaboratively

Easily share waveform datasets. Colleagues can rescale waveforms and take measurements as if they were sitting in front of the oscilloscope.

TekScope PC Waveform Analysis Software

Register and download TekScope PC Waveform Analysis at tek.com/software/tekscope-pc-analysis-software

PACKAGE NAME	CONTENT	OPTION	PRICE (USD)
TekScope PC Waveform Analysis Software BASE PACKAGE	Waveform view, scale/pan/zoom, cursors, measurements, math, plots	N/A	Free
Multi-Scope Analysis	Remotely connect and acquire data directly from all supported oscilloscopes in real-time. Connect up to 4 scopes and 32 channels.	TEKSCOPE-MULTI	1-year: \$3,000 Perpetual: \$7,500
Jitter Measurements & Analysis	Advanced Jitter and Eye Analysis	TEKSCOPE-DJA	1-year: \$1,200 Perpetual: \$2,900
Remote Analysis for Bench Oscilloscopes	Remotely connect and acquire data directly from bench oscilloscopes in real-time. Perform analysis and decode essential protocols — I ² C, SPI, RS-232/422/485/UART, CAN, CAN-FD, LIN	TEKSCOPE-ENTRY	1-year: \$200 Perpetual: \$500
Low Speed Protocol Decode	I ² C, I3C, SPI, RS-232, SPMI, I2S, LJ, RJ, TDM, CAN, CAN-FD, LIN, FlexRay, SENT, 100BASE-T1 Automotive Ethernet, MIL-STD-1553, ARINC-429, SpaceWire, USB 2.0, eUSB2, PSI5, SVID, 10BASE-T / 100BASE-TX Ethernet, MDIO, NRZ, 8b/10b, MIPI D-PHY, Manchester, SDLC, MIPI C-PHY, 1-Wire	TEKSCOPE-DECODE	1-year: \$2,500 Perpetual: \$6,300
Power Electronics Analysis	Advanced Power Analysis, Magnetic Analysis, Inverter Motor Drive Analysis	TEKSCOPE-PWR-ELC	1-year: \$850 Perpetual: \$2,200
Power Integrity Analysis	Digital Power Management, Power Management Serial Decode and Analysis (SPMI)	TEKSCOPE-PWR-INT	1-year: \$850 Perpetual: \$2,200
Spectrum View Analysis	Spectrum analysis on any analog channel. Waveform and spectrum displays may be independently adjusted, but are synchronized.	TEKSCOPE-SV	1-year: \$650 Perpetual: \$1,600

Tektronix[®]

Copyright © Tektronix. All rights reserved. Tektronix products are covered by U.S. and foreign patents, issued and pending. Information in this publication supersedes that in all previously published material. Specification and price change privileges reserved. TEKTRONIX and TEK are registered trademarks of Tektronix, Inc. All other trade names referenced are the service marks, trademarks or registered trademarks of their respective companies.