

CONFIGURING THE TEKTRONIX TDS5000B FOR AN EXTERNAL MONITOR OR PROJECTOR

Activate the display of the oscilloscope to an external monitor through the VGA OUT port

By using this video display port, the TDS5000B instrument will display the same screen on both the scope's CRT plus the external monitor attached to the VGA OUT port.
(See the next section of this document to implement the Windows Extended Desktop feature.)



Step 1: With the instrument OFF, attach the VGA cable of the external monitor or projector to the TDS5000B VGA OUT port (Fig. A).

Step 2: Turn on the instrument.

Step 3: On the Windows Desktop (minimize the TekScope application), right-click on an empty section of the screen. Select Properties.

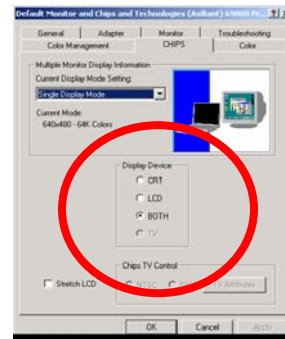
Step 4: Select the Settings Tab. Select the Advanced Button. Select the CHIPS Tab.

Step 5: Select BOTH as the option in the Display Device section of the CHIPS Tab.

Step 4: Select OK twice to accept the new display settings.

Figure A: TDS5000B VGA OUT port

The display of the instrument should now appear on the scope display and the external monitor or projector.



Troubleshooting tips:

- ❖ Confirm the video cable is connected to the TDS5000B VGA OUT port (Fig. A).
- ❖ Boot the oscilloscope AFTER connecting the video cable to each device
- ❖ Turn on the external monitor or reboot the projector
- ❖ Check the operating menu and instructions of the projector to verify the video signal from the instrument is being received properly.

CONFIGURING THE TEKTRONIX TDS5000B FOR AN EXTERNAL MONITOR OR PROJECTOR

Extend the Windows Desktop of the oscilloscope to an external monitor through the VIDEO port

These instructions, using the VIDEO port, configure the TDS5000B to display its Standard Windows Desktop and the TekScope application on the scope's CRT, but display the Extended Windows Desktop on the external monitor or projection device attached to the VIDEO port.



Step 1: With the TDS5000B instrument on, go to the Windows Desktop (minimize the TekScope application), and right-click on an empty section of the screen. Select Properties.

Step 2: Select the Settings Tab. Select the Advanced Button. Select the CHIPS Tab.

Step 3: Select BOTH as the option in the Display Device section of the CHIPS Tab.

Step 4: Select OK.

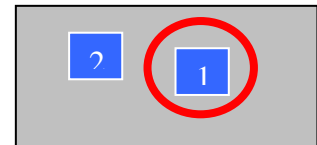
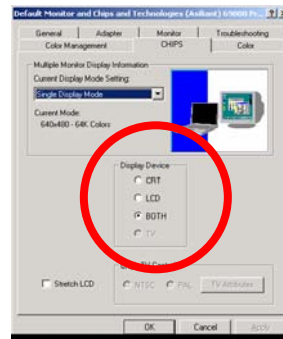


Figure B: TDS5000B VIDEO port

Step 5: On the Settings Tab, select the figure representing Monitor 1

Step 6: Select the button labeled, "Extend my Windows desktop to this monitor"

Step 7: In "Screen Area" of this tab, set the resolution of the external monitor to its capability. It is usually 800x600 or 1024x768 pixels, but check your monitor's manual for specifications.

NOTE: DO NOT CHANGE THE COLOR DEPTH (High Color 16 bit) or the Tekscope application will display incorrectly

Step 8: Select OK

Step 9: - Reboot the TDS5000B instrument.

NOTE: A Window may appear after selecting OK giving the choice to Apply the settings or to Reboot. The operation of this feature is most consistent by selecting the option to REBOOT.

Troubleshooting tips:

- ❖ Confirm the video cable is connected to the TDS5000B VIDEO port (Fig. B).
- ❖ Boot the oscilloscope AFTER following the instructions and connecting the video cable to each device
- ❖ Turn on the external monitor or reboot the projector
- ❖ Check the operating menu and instructions of the projector to verify the video signal from the instrument is being received properly.