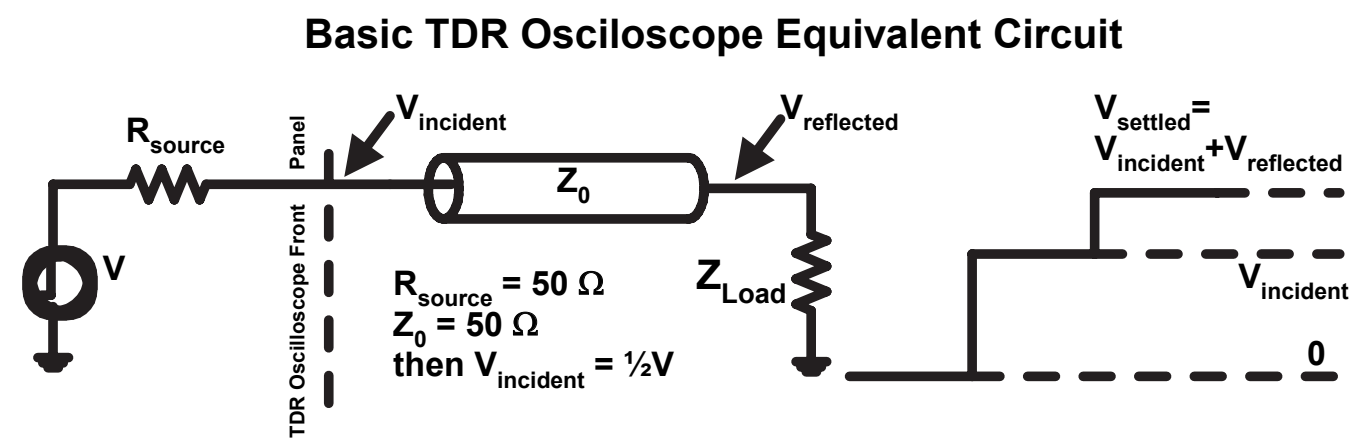
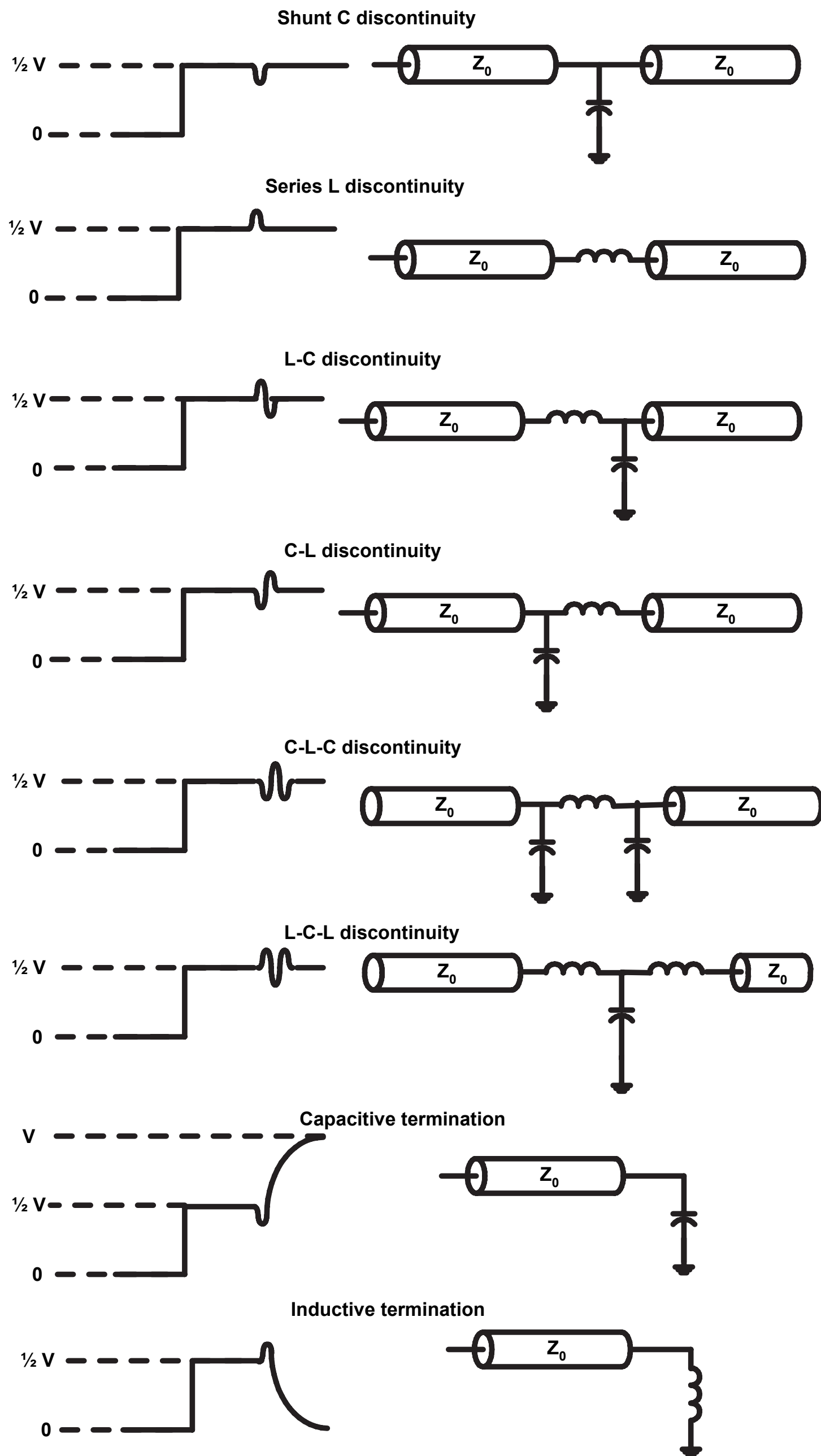
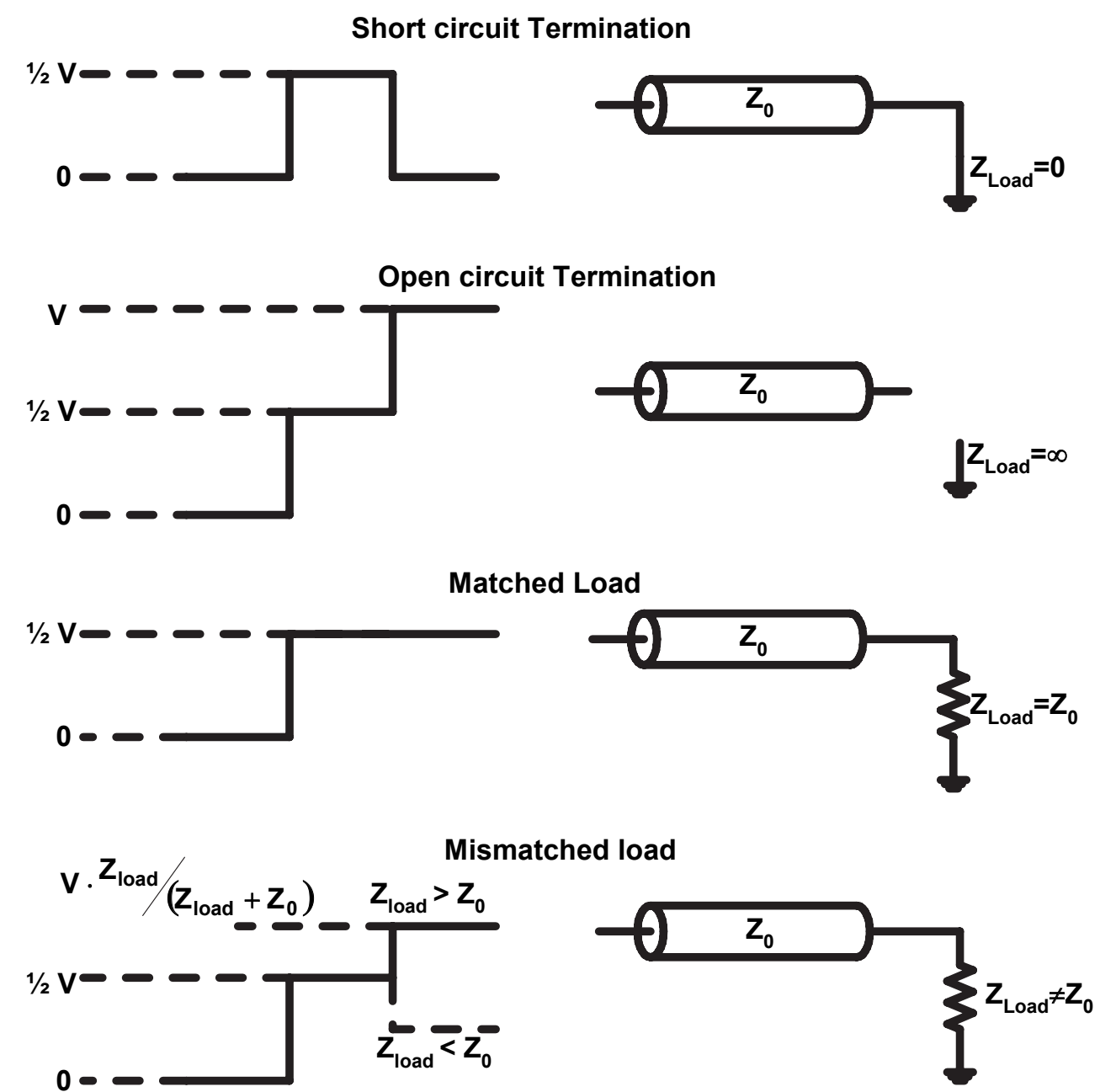


IConnect[®] TDR Software Modeling Quick Guide



Basic TDR Equations

$$Z_{load} = Z_0 \cdot \frac{1 + \rho}{1 - \rho} = \frac{Z_0 \cdot V_{settled}}{2 \cdot V_{incident} - V_{settled}} \quad \rho = \frac{V_{reflected}}{V_{incident}} = \frac{Z_{load} - Z_0}{Z_{load} + Z_0}$$



Measure
 Shows a measured TDR waveform with a step and a reflection.

Model
 Shows a circuit model with a TDR Source, an Interconnect model, and a load.

Simulate
 Shows a computer monitor displaying simulation results.

Compare and Verify
 Shows the simulated waveform compared against the measured waveform.

Tektronix, Inc.
 14200 SW Karl Braun Drive
 P.O. Box 500
 Beaverton, OR 97077 USA

For product information, sales, service, and technical support:
 • In North America, call 1-800-833-9200.
 • Worldwide, visit www.tektronix.com to find contacts in your area.

TDRPST-0201
 Data subject to change without notice