

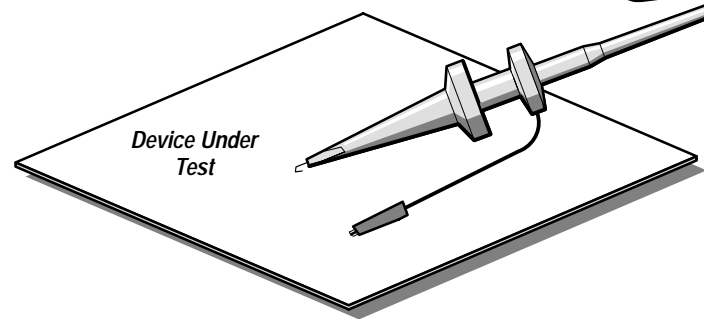
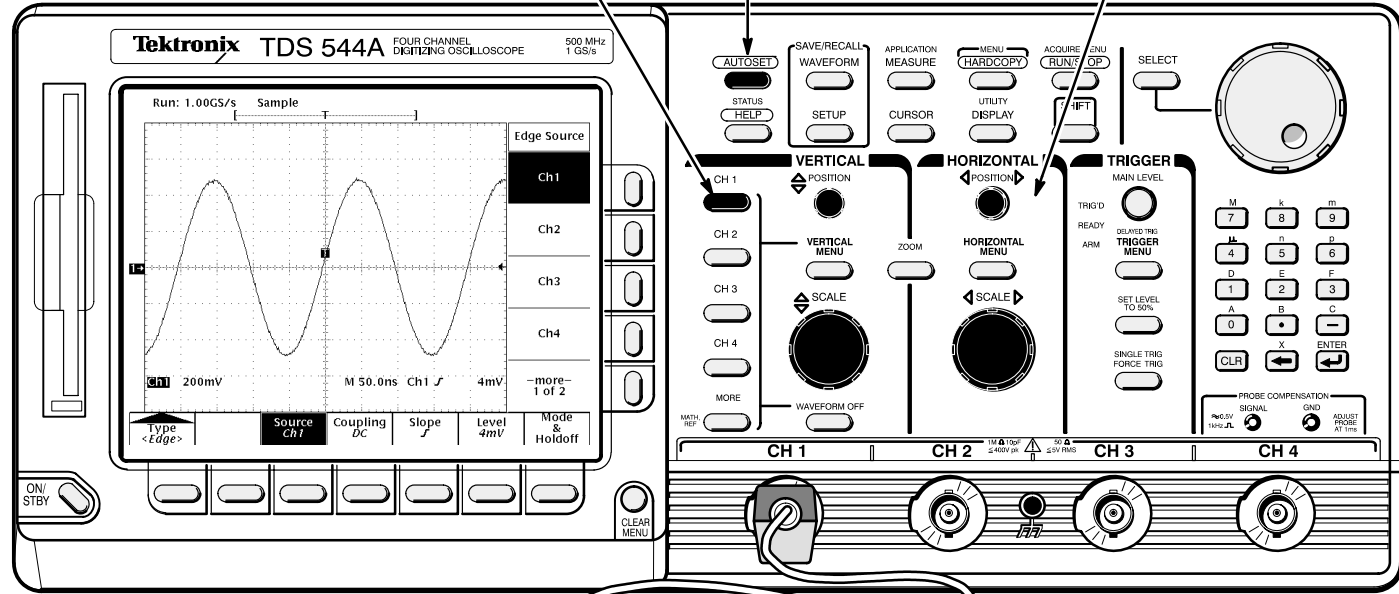
## **Reference**

**TDS Family Digitizing Oscilloscopes  
(TDS 520A, 524A, 540A, 544A,  
620A, 640A, & 644A)**

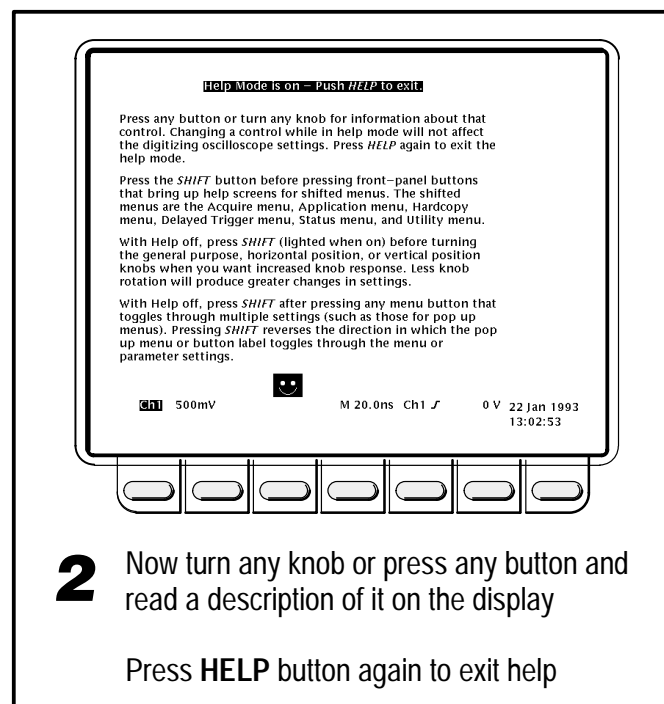
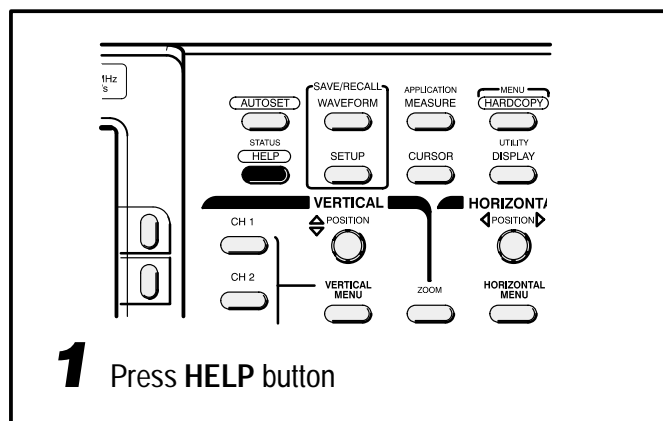
**070-8711-02**

# Displaying a Waveform

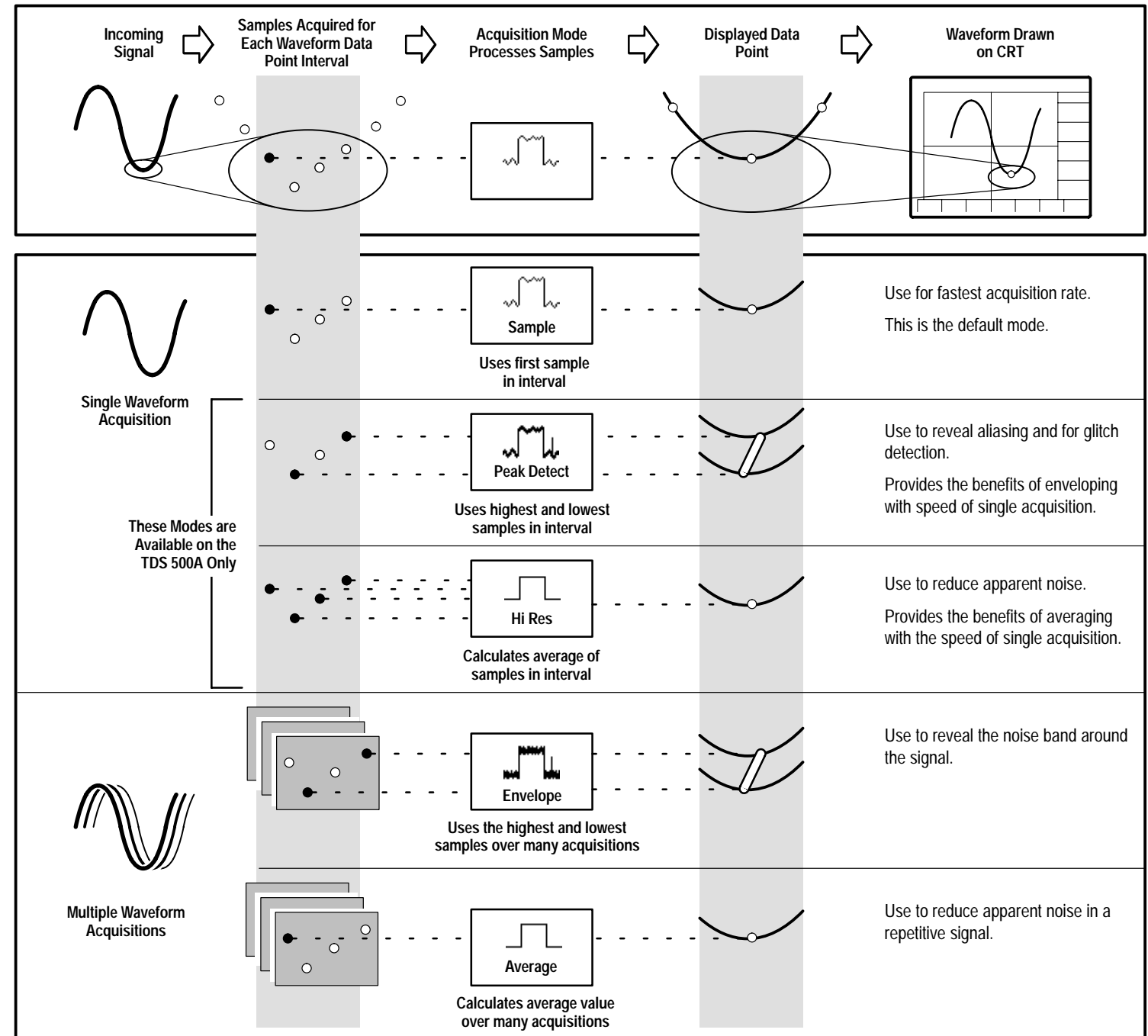
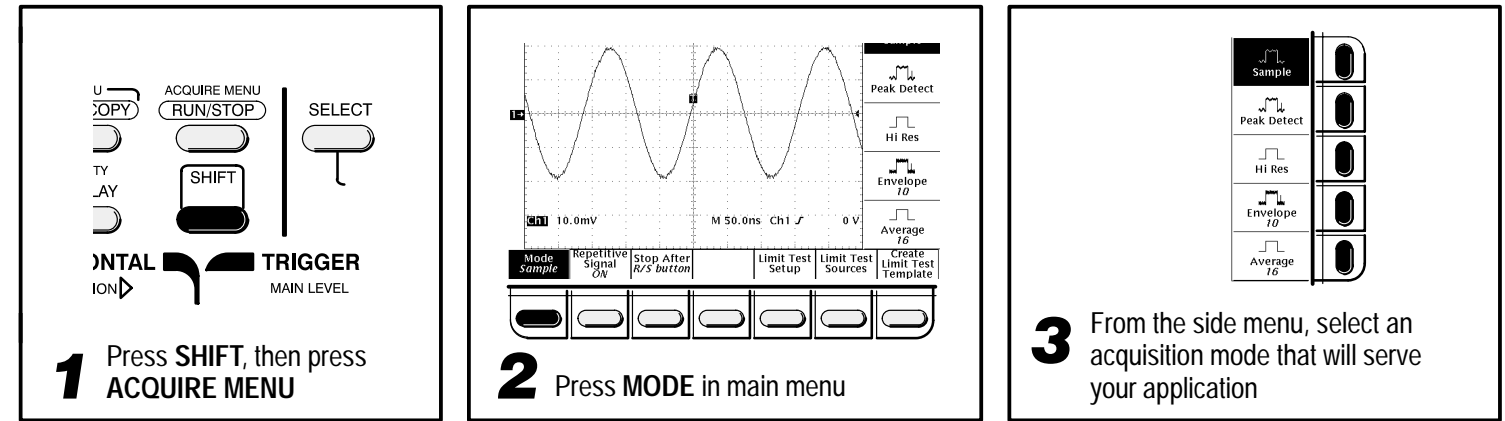
- 1 Attach a probe to CH 1 and hook it up to your signal
- 2 Press CH 1 button
- 3 Press AUTOSET
- 4 Adjust VERTICAL and HORIZONTAL POSITION and SCALE as desired



## On-Line Help



# Acquisition Mode



# Cursor Measurements

**1** Press **CURSOR** button

**2** Press **FUNCTION** in main menu

**3** Select from side menu

**4** Move cursor with general purpose knob  
Press **SELECT** to switch between cursors

# Operating a Menu

**1** Press any of the front panel menu buttons

**2** Select an item from the main (bottom) menu

**3** Select an item from the side menu, if displayed

**4** Adjust menu item values with general purpose knob or by entering numbers on the keypad

## Mass Storage (Optional on TDS 520A, 540A, 620A, & 640A)

1.4 Mbyte Disk Drive

Save waveforms, setups, and screen copies to PC-compatible 3.5 inch disk

## Quicker Adjustments

Press **SHIFT** button to change rate of **VERTICAL** and **HORIZONTAL POSITION** knobs, and general purpose knob

# Selecting a Trigger

**1** Press **TRIGGER MENU** button

**2** Select trigger type or parameter from main menu

TYPE <Edge>	TYPE <Logic>		TYPE <Pulse>			TYPE <Video> (Optional)
	CLASS <Pattern>	CLASS <State>	CLASS <Glitch>	CLASS <Runt>	CLASS <Width>	
Coupling	DC DC	AND	AND	Positive	Positive	Video
	AC AC	OR	OR	Negative	Negative	
	HF Reject	NAND	NAND	Either	Either	
	LF Reject	NOR	NOR	Width	Width	
Slope	Positive	Define High, Low, and Don't Care states for channels 1, 2, 3, and 4	Define High, Low, and Don't Care states for channels 1, 2, and 3 Clock on channel 4	OFF Accept Glitch	Runt Upper	Trigger When
	Negative	Qualify condition by time		ON Reject Glitch	Runt Lower	
					Within Limits	FlexFmt
					Out of Limits	
					Upper Limits	
					Lower Limits	

**3** Set **TRIGGER LEVEL**

"T" Shows Trigger Position

Press to Display Pop-Ups

Press Again to Make Selection

A Pop-Up Selection Changes the Other Main Menu Items

Removes Menus From Screen

Select Measurement						
Period	Rise Time	Delay	High	Pk-Pk	Mean	Area
Frequency	Fall Time	Phase	Low	Amplitude	Cycle Mean	Cycle Area
Positive Width	Positive Duty Cycle	Burst Width	Max	Positive Overshoot	RMS	—more— 7 of 7
Negative Width	Negative Duty Cycle		Min	Negative Overshoot	Cycle RMS	To 1 of 7
—more— 1 of 7	—more— 2 of 7	—more— 3 of 7	—more— 4 of 7	—more— 5 of 7	—more— 6 of 7	

# Automated Measurements

**1** Press **MEASURE** button

**2** Press **Select Measrmt** or **Snapshot** in main menu

**3** Select up to 4 measurements

**4** Press **CLEAR MENU** button to move measurement readouts away from graticule