

User Manual



SL7PC66 & SL7PC86 PC-based Data Display Analysis Software

071-0300-01

This document supports software version 2.25
and above.

First Printing: August 1999

Copyright © Sony/Tektronix Corporation

Copyright © Tektronix, Inc. All rights reserved. Licensed software products are owned by Tektronix or its suppliers and are protected by United States copyright laws and international treaty provisions.

Use, duplication, or disclosure by the Government is subject to restrictions as set forth in subparagraph (c)(1)(ii) of the Rights in Technical Data and Computer Software clause at DFARS 252.227-7013, or subparagraphs (c)(1) and (2) of the Commercial Computer Software – Restricted Rights clause at FAR 52.227-19, as applicable.

Tektronix products are covered by U.S. and foreign patents, issued and pending. Information in this publication supercedes that in all previously published material. Specifications and price change privileges reserved.

Printed in the Japan

Sony/Tektronix Corporation, P.O.Box 5209, Tokyo Int'l, Tokyo 100-31 Japan

Tektronix, Inc., P.O. Box 1000, Wilsonville, OR 97070-1000

TEKTRONIX and TEK are registered trademarks of Tektronix, Inc.

MS-DOS and Microsoft are registered trademarks of Microsoft Corporation.

Windows and Windows 95 are trademarks of Microsoft Corporation.

PC-AT is a trademark of International Business Machines, Inc.

SOFTWARE WARRANTY SUMMARY

Tektronix warrants that its software products will conform to the specifications in the documentation provided with the product, when used properly in the specified operating environment, for a period of three (3) months. The warranty period begins on the date of shipment, except that if the program is installed by Tektronix, the warranty period begins on the date of installation or one month after the date of shipment, whichever is earlier. If the software product does not conform as warranted, Tektronix will provide the remedial services as described in the documentation provided with the product.

For products offered without documentation, Tektronix warrants that the media on which the software product is furnished and the encoding of the programs on the media will be free from defects in materials and workmanship for a period of three (3) months from the date of shipment. If any such medium or encoding proves defective during the warranty period, Tektronix will provide a replacement in exchange for the defective medium. Except as to the media on which the software product is furnished, the software product is provided "as is" without warranty of any kind, either express or implied.

Tektronix does not warrant that the functions contained in any software product will meet Customer's requirements or that the operation of the programs will be uninterrupted or error-free.

In order to obtain service under this warranty, Customer must notify Tektronix of the defect before the expiration of the warranty period and, for warranted products, make suitable arrangements for such service in accordance with the instructions received from Tektronix. If Tektronix is unable, within a reasonable time after receipt of such notice, to provide remedial service for warranted products or, for "as is" products, to provide a replacement that is free from defects in materials and workmanship, Customer may terminate the license for the software product and return the software product and any associated materials for credit or refund.

The above warranties shall not apply to any software product that has been modified or altered by Customer. Tektronix shall not be obligated to furnish service under this warranty with respect to any software product a) that is used in an operating environment other than that specified or in a manner inconsistent with the User Manual and documentation; or b) when the software product has been integrated with other software if the result of such integration increases the time or difficulty of analyzing or servicing the software product or the problems ascribed in the software product.

THE ABOVE WARRANTIES ARE GIVEN BY TEKTRONIX WITH RESPECT TO THE LISTED PRODUCTS IN LIEU OF ANY OTHER WARRANTIES, EXPRESS OR IMPLIED. TEKTRONIX AND ITS VENDORS DISCLAIM ANY IMPLIED WARRANTIES OF MERCHANTABILITY OR FITNESS FOR A PARTICULAR PURPOSE. TEKTRONIX' RESPONSIBILITY TO PROVIDE REMEDIAL SERVICE WHEN SPECIFIED, REPLACE DEFECTIVE MEDIA, OR REFUND CUSTOMER'S PAYMENT, AS APPLICABLE, IS THE SOLE AND EXCLUSIVE REMEDY PROVIDED TO CUSTOMER FOR BREACH OF EITHER WARRANTY. TEKTRONIX AND ITS VENDORS WILL NOT BE LIABLE FOR ANY INDIRECT, SPECIAL, INCIDENTAL, OR CONSEQUENTIAL DAMAGES IRRESPECTIVE OF WHETHER TEKTRONIX OR THE VENDOR HAS ADVANCE NOTICE OF THE POSSIBILITY OF SUCH DAMAGES.

Table of Contents

Preface	v
About this Manual	v

Getting Started

Overview	1-1
Product Overview	1-1
What You Get With This Program	1-1
What You Need to Run This Software	1-1
The Computer	1-1
Software Installation	1-2
Making a Backup Copy	1-2
SL7PC66/SL7PC86 Software Installation	1-3
Uninstalling the Old Software	1-3
Installing the New Software	1-3
Option 15 cdmaOne Analysis Software Installation <i>(Optional)</i>	1-5
Uninstalling the Old Software	1-5
Installing the New Software	1-6
Option 16 W-CDMA/cdmaOne Analysis Software Installation <i>(Optional)</i>	1-7
Uninstalling the Old Software	1-7
Installing the New Software	1-8
Option 20 CCDF Analysis Software Installation <i>(Optional)</i> ..	1-10
Uninstalling the Old Software	1-10
Installing the New Software	1-11
Launching and Quitting SL7PC66/SL7PC86	1-13
Launching SL7PC66/SL7PC86	1-13
Quitting SL7PC66/SL7PC86	1-14

Operating Basics

Operating Basics	2-1
Window Operations	2-2
Maximizing and Minimizing the Window	2-2
Maximize the window	2-2
Minimize the window	2-2
Front Panel Interface (FPI) and Mouse Operation	2-3
FPI Operations	2-4
Side Menu Operations	2-5
Selecting the CONFIG, SETUP, or VIEW Menu	2-7
Moving the Marker and Selecting a Frame	2-8
Operations through the Keyboard	2-9
Operation Overview	2-10
Flow of Operation	2-10
Restrictions on Use	2-11

List of Figures

Figure 1-1: Setup initial screen of the SL7PC86 software	1-3
Figure 1-2: Setup initial screen of the cdmaOne Analysis Software ..	1-6
Figure 1-3: Setup initial screen of the W-CDMA Analysis Software ..	1-8
Figure 1-4: Choose Destination Location dialog box	1-9
Figure 1-5: Setup initial screen of the CCDF Analysis Software	1-11
Figure 1-6: Choose Destination Location dialog box	1-12
Figure 1-7: SL7PC66/SL7PC86 initial screen	1-13
Figure 1-8: Quitting SL7PC66/SL7PC86	1-14
Figure 2-1: Summaries window operation of this software	2-2
Figure 2-2: Association between the analyzer front panel and FPI ..	2-4
Figure 2-3: Side menu operations (top items)	2-5
Figure 2-4: Side menu operations (7 low menu items)	2-6
Figure 2-5: Menu selection by click operations	2-7
Figure 2-6: Moving the marker and selecting a frame	2-8
Figure 2-7: Data display example	2-10

List of Tables

Table 2-1: Correspondence between the numeric keypad and keyboard keys	2-9
Table 2-2: Restrictions on use	2-11

Preface

This manual explains the Sony/Tektronix software package *SL7PC66 & SL7PC86 PC-based Data Display Analysis Software*.

This manual only describes the basic operations of SL7PC66 and SL7PC86. For details of display and analysis, refer to the 3066 & 3086 User Manual (071-0501-01), included with the 3066 and 3086.

SL7PC66 and SL7PC86 are the Microsoft Windows based applications, and as such, provide a friendly user interface.

About this Manual

This manual contains the following sections and appendices:

- *Section 1, Getting Started* — Provides general information about system requirements and the installation procedures.
- *Section 2, Operating Basics* — Describes the Window Operations and Screen Panel Interface and Operation Overview.



Getting Started

Overview

SL7PC66 and SL7PC86 are PC-based application programs used to display and analyze the data captured by the 3066 and 3086 Spectrum Analyzers, respectively.

Product Overview

This software is the same as that used in the 3066 and 3086 except that it does not have the function that enable access to the analyzer specific hardware. After capturing the data with the analyzer, you can save it in a file and copy it to your PC through a network or floppy disks. Then, you can let this software display and/or analyze the data on the PC.

The SL7PC66 and SL7PC86 applications display the same views as those on the 3066 and 3086, respectively. Instead of the front panel, it displays the front panel interface (FPI), through which you can make menu operations. For display and/or analysis of data, you have to make operations through views like the analyzer.

What You Get With This Program

You should receive the following items with this product:

- SL7PC66 or SL7PC86 software diskettes (5 FDs)
- SL7PC66 & SL7PC86 User Manual
- Optional software diskettes (Option 15, 16, and/or 20)

What You Need to Run This Software

SL7PC66/SL7PC86 runs in the Microsoft Windows environment. Microsoft Windows 95 must be installed on your system before running the application.

The Computer

The recommended **Minimum** configuration for your system is:

- PENTIUM or 486 class personal computer
- 32 Mbyte memory
- 40 Mbyte hard disk
- 800 × 600 pixel screen size
- 256 colors (Not minimum but Only 256 colors)

Software Installation

This section explains how to install the SL7PC66/SL7PC86 and optional software on your personal computer. The software is supplied on 3½ inch diskettes (1.44 Mbytes).

The following procedures are described in order.

1. **SL7PC66/SL7PC86 Software installation**
 - a. Uninstalling the old software
 - b. Installing the new software
2. **Option 15 cdmaOne Analysis Software installation** *Optional*
 - a. Uninstalling the old software
 - b. Installing the new software
3. **Option 16 W-CDMA/cdmaOne Analysis Software installation** *Optional*
 - a. Uninstalling the old software
 - b. Installing the new software
4. **Option 20 CCDF Analysis Software installation** *Optional*
 - a. Uninstalling the old software
 - b. Installing the new software
5. **Launching and Quitting SL7PC66/SL7PC86**

NOTE

The optional software (option 15, 16, and 20) works on the SL7PC66/SL7PC86 software version 2.25 or later.

Making a Backup Copy

Magnetic diskettes are subject to physical damage and the data contained on them is easily destroyed by inadvertent stray magnetic fields. A backup copy is inexpensive insurance against loss of data.

Before proceeding, make a copy of each of the diskettes in this package. Use the copies for installing programs and files and store the original diskettes in a safe place.

SL7PC66/SL7PC86 Software Installation

Uninstalling the Old Software

If you have installed an earlier version of the SL7PC66 or SL7PC86 software, remove the old files.

1. On the desktop, double-click **My Computer** → **Control Panel** → **Add/Remove Programs** in this order.
2. In the Add/Remove Programs Properties dialog box, select the 3066PC or 3086PC application, then click **Add/Remove....**
3. The Confirm File Deletion dialog box opens. Click **Yes** to confirm the deletion.
4. The Remove Programs From Your Computer dialog box appears. Click **OK**.
5. In the Add/Remove Programs Properties dialog box, click **OK**.
6. Close all windows.

Installing the New Software

1. Insert the *first* SL7PC66 (for the 3066) or SL7PC86 (for the 3086) diskette into drive A:.
2. On the desktop, double-click **My Computer** → **3.5 Floppy (A:)** in order.
3. The contents of the floppy disk are displayed in the window. Double-click on the **Setup.exe** icon to open the Setup Wizard.

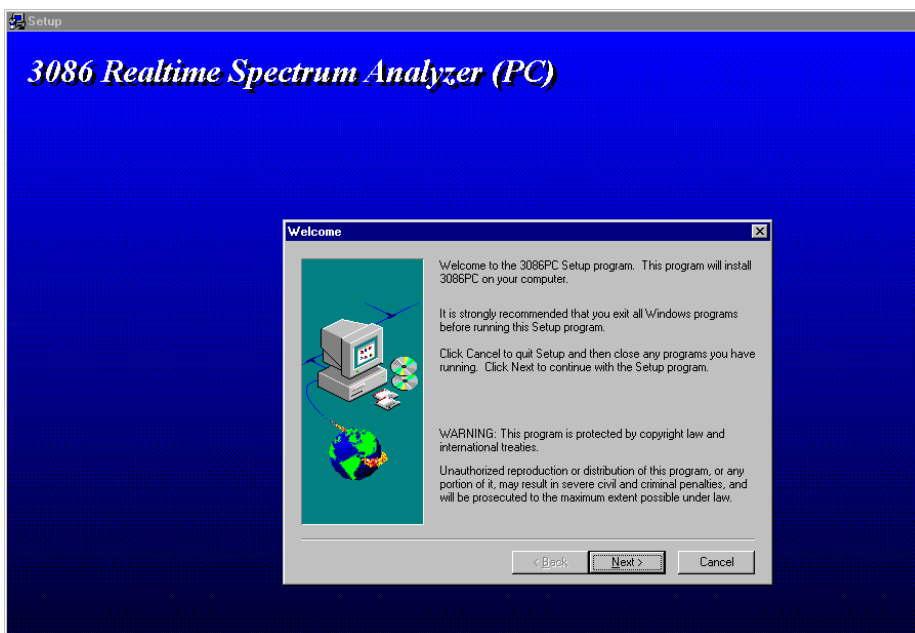


Figure 1-1: Setup initial screen of the SL7PC86 software

4. In the Setup Wizard, do the following steps:
 - a. In the Welcome dialog box, click on the **Next>** button.
 - b. In the Choose Destination Location dialog box, click on the **Next>** button.
 - c. In the Start Copying Files box, click on the **Next>** button.

The installation begins.

- d. When the Setup Needs The Next Disk message box appears, change the floppy disk and then click on the **OK** button.
 - e. Repeat Step **d** until the Setup Complete dialog box appears. Once it appears, eject the floppy disk and then click on the **Finish** button.
5. Close all windows.

Now the installation is complete.

6. Create a shortcut if necessary.
 - a. On the desktop, click the right mouse button to access the menu.
 - b. Select **New** → **Shortcut** in order to open the Create Shortcut dialog box.
 - c. Click on the **Browse...** button. Select **Sapnl.exe** in the list box. By default, it is located under

C:\Program Files\SONY Tektronix\3066\Bin (for SL7PC66)
C:\Program Files\SONY Tektronix\3086\Bin (for SL7PC86)
 - d. Click on the **Open** button to display “Sapnl.exe” in the File Name text box. Then, click on the **Next>** button.
 - e. Click on the **Finish** button to complete creating the shortcut.

The **Sapnl.exe** shortcut icon appears on the desktop.

Option 15 cdmaOne Analysis Software Installation (Optional)

If you add the optional cdmaOne Analysis Software, do the following procedures.

Uninstalling the Old Software

If you have installed an earlier version of the cdmaOne Analysis Software, remove the old files.

1. On the desktop, double-click **My Computer** → **Control Panel** → **Add/Remove Programs** in this order.
2. In the Add/Remove Programs Properties dialog box, select the 3066 cdmaOne Fwd Link application, then click **Add/Remove....**
3. The Confirm File Deletion dialog box opens. Click **Yes** to confirm the deletion.
4. The Remove Programs From Your Computer dialog box appears. Click **OK**.
5. In the Add/Remove Programs Properties dialog box, click **OK**.
6. Close all windows.

Installing the New Software

1. Insert the cdmaOne Analysis Software Disk 1 into the floppy disk drive.
2. Double-click **My Computer** and then **3.5 inch FD**.
3. In the floppy disk window, double-click the **Setup.exe** icon to start the Setup Wizard.

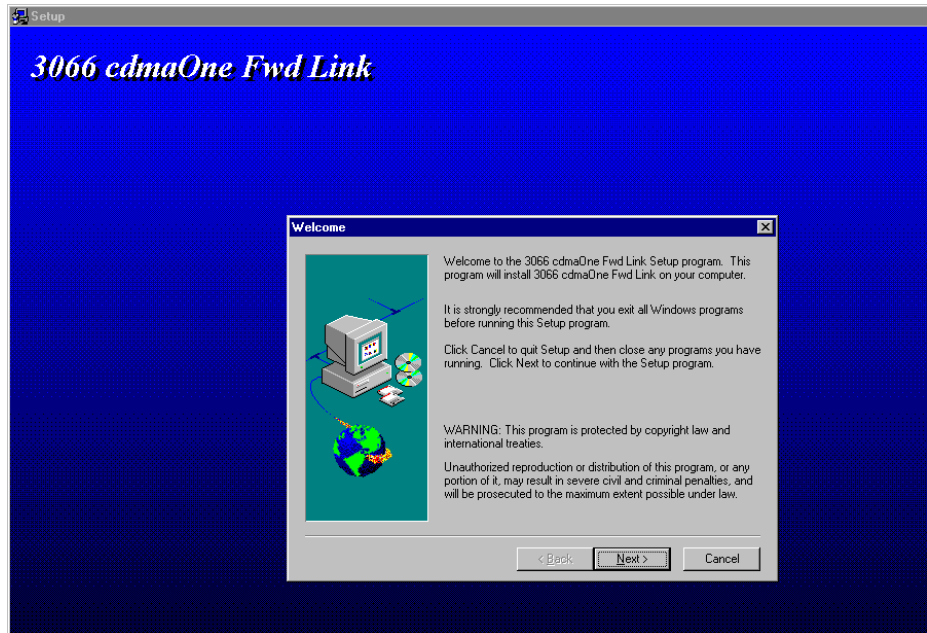


Figure 1-2: Setup initial screen of the cdmaOne Analysis Software

4. In the Setup Wizard, do the following steps:
 - a. In the Welcome dialog box, click **Next>**.
 - b. In the Choose Destination Location dialog box, click **Next>**.
 - c. In the Start Copying Files dialog box, click **Next>**.
 - d. When the Setup Needs The Next Disk message box appears, change the floppy disk as prompted.
 - e. When the Setup Complete dialog box appears, eject the floppy disk and then click **Finish**.
5. Close all windows.

Option 16 W-CDMA/cdmaOne Analysis Software Installation (Optional)

If you add the optional W-CDMA/cdmaOne Analysis Software, do the following procedures.

Uninstalling the Old Software

If you have installed earlier versions of the W-CDMA and cdmaOne Analysis Software, remove the old files.

1. On the desktop, double-click **My Computer** → **Control Panel** → **Add/Remove Programs** in this order.
2. In the Add/Remove Programs Properties dialog box, select the 3086 W-CDMA Code Domain Power application, then click **Add/Remove....**
3. The Confirm File Deletion dialog box opens.
Click **Yes** to confirm the deletion.
4. The Remove Programs From Your Computer dialog box appears.
Click **OK**.
5. In the Add/Remove Programs Properties dialog box, select the 3066 cdmaOne Fwd Link application, then click **Add/Remove....**
6. The Confirm File Deletion dialog box opens.
Click **Yes** to confirm the deletion.
7. The Remove Programs From Your Computer dialog box appears.
Click **OK**.
8. In the Add/Remove Programs Properties dialog box, click **OK**.
9. Close all windows.

Installing the New Software

1. Insert the W-CDMA Analysis Software Disk 1 into the floppy disk drive.
2. Double-click **My Computer** and then **3.5 inch FD**.
3. In the floppy disk window, double-click the **Setup.exe** icon to start the Setup Wizard.

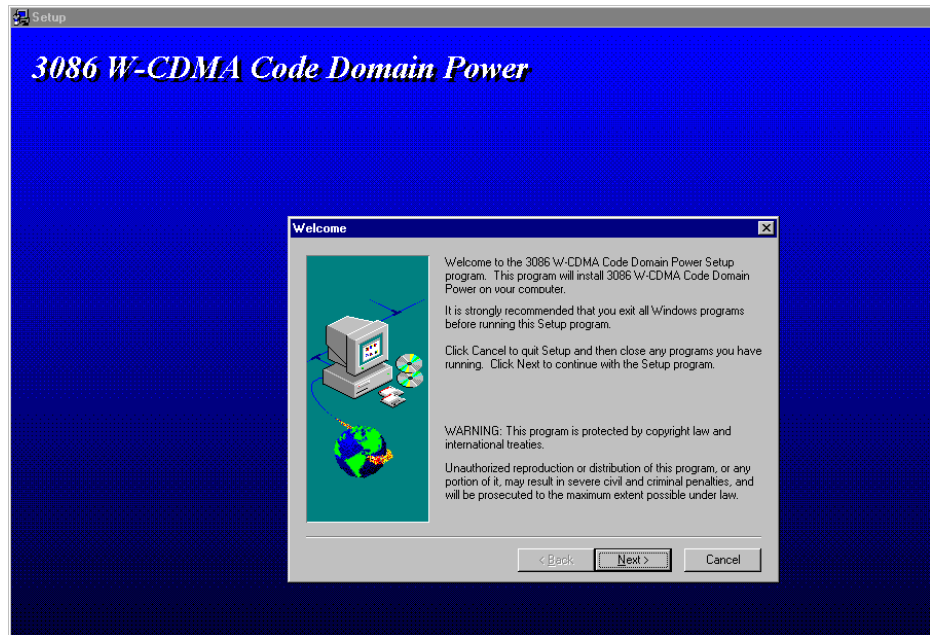


Figure 1-3: Setup initial screen of the W-CDMA Analysis Software

4. In the Setup Wizard, do the following steps:
 - a. In the Welcome dialog box, click **Next>**.
 - b. In the Choose Destination Location dialog box, click **Next>**.
 - c. In the Start Copying Files dialog box, click **Next>**.
 - d. When the Setup Needs The Next Disk message box appears, change the floppy disk as prompted.
 - e. When the Setup Complete dialog box appears, eject the floppy disk and then click **Finish**.

5. Insert the cdmaOne Analysis Software Disk 1 into the floppy disk drive.
6. Double-click **My Computer** and then **3.5 inch FD**.
7. In the floppy disk window, double-click the **Setup.exe** icon to start the Setup Wizard.
8. In the Setup Wizard, do the following steps:
 - a. In the Welcome dialog box, click **Next>**.
 - b. In the Choose Destination Location dialog box, click the **Browse...** button in the Destination Directory box.
 - c. In the Choose Directory dialog box, change the path as follows using the keyboard:

From C:\Program Files\SONY Tektronix\3066\opCode
 To C:\Program Files\SONY Tektronix\3086\opCode

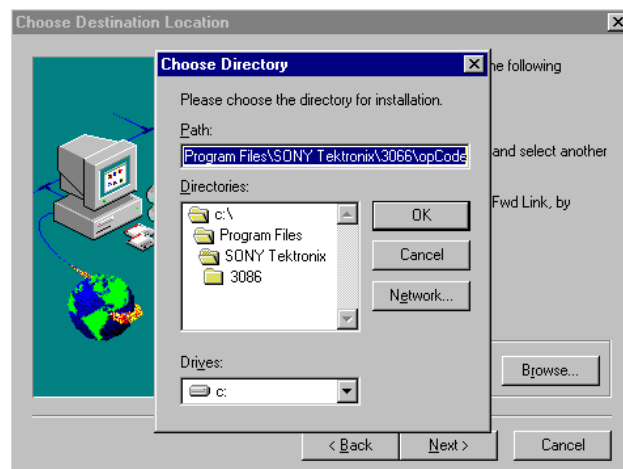


Figure 1-4: Choose Destination Location dialog box

- d. Click **OK** in the Choose Directory dialog box, and then click **Next>** in the Choose Destination Location dialog box.
 - e. In the Start Copying Files dialog box, click **Next>**.
 - f. When the Setup Needs The Next Disk message box appears, change the floppy disk as prompted.
 - g. When the Setup Complete dialog box appears, eject the floppy disk and then click **Finish**.
9. Close all windows.

Option 20 CCDF Analysis Software Installation (*Optional*)

If you add the optional CCDF Analysis Software, do the following procedures.

Uninstalling the Old Software

If you have installed an earlier version of the CCDF Analysis Software, remove the old files.

1. On the desktop, double-click **My Computer** → **Control Panel** → **Add/Remove Programs** in this order.
2. In the Add/Remove Programs Properties dialog box, select the 3086/56/66 CCDF (Complementary Cumulative Distribution Function) application, and then click **Add/Remove....**
3. The Confirm File Deletion dialog box opens.
Click **Yes** to confirm the deletion.
4. The Remove Programs From Your Computer dialog box appears.
Click **OK**.
5. In the Add/Remove Programs Properties dialog box, click **OK**.
6. Close all windows.

Installing the New Software

1. Insert the CCDF Analysis Software floppy disk into the disk drive.
2. Double-click **My Computer** and then **3.5 inch FD**.
3. In the floppy disk window, double-click the **Setup.exe** icon to start the Setup Wizard.

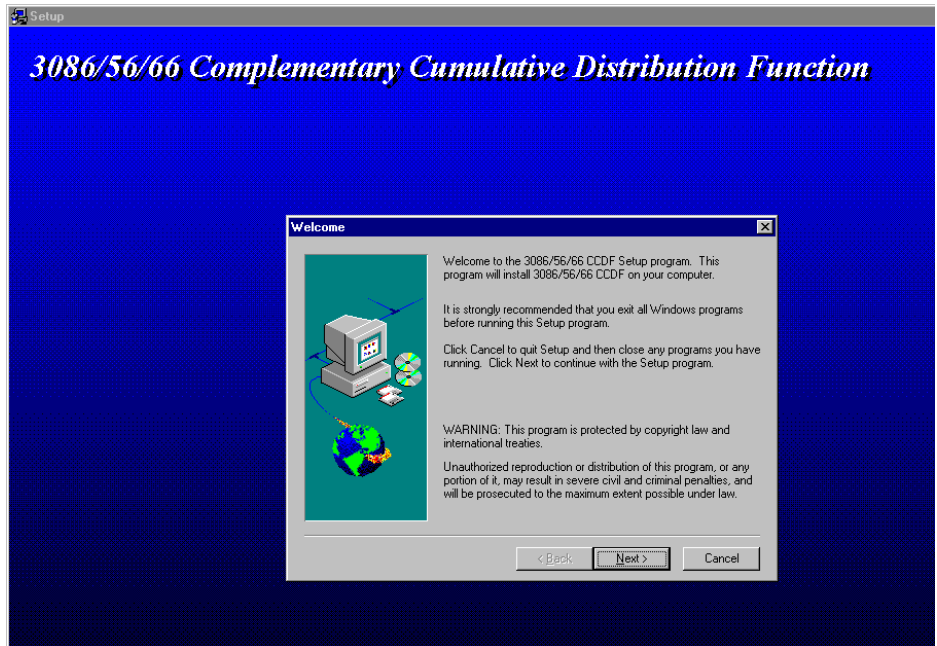


Figure 1-5: Setup initial screen of the CCDF Analysis Software

4. In the Setup Wizard, do the following steps:
 - a. In the Welcome dialog box, click **Next>**.
 - b. In the Choose Destination Location dialog box, click the **Browse...** button in the Destination Directory box.

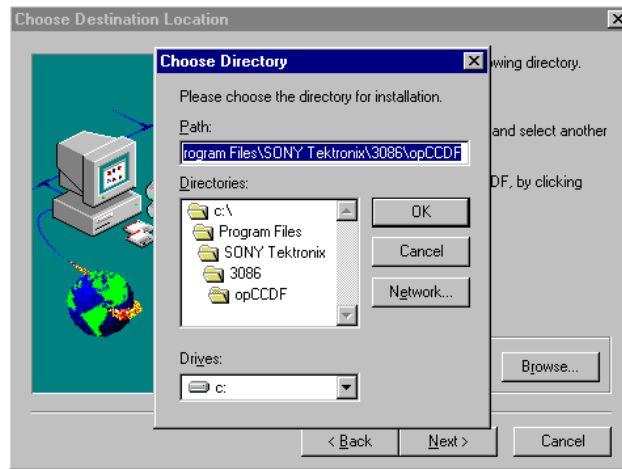


Figure 1-6: Choose Destination Location dialog box

- c. In the Choose Directory dialog box, do one of the following depending on your system.
 - **For SL7PC86:** Make sure that the path is as follows:
C:\Program Files\SONY Tektronix\3086\opCCDF
 - **For SL7PC66:** Change the path as follows using the keyboard:
From C:\Program Files\SONY Tektronix\3086\opCCDF
To C:\Program Files\SONY Tektronix\3066\opCCDF
 - d. Click **OK** in the Choose Directory dialog box, and then click **Next>** in the Choose Destination Location dialog box.
 - e. When the Setup Complete dialog box appears, eject the floppy disk and then click **Finish**.
5. Close all windows.

Launching and Quitting SL7PC66/SL7PC86

Launching SL7PC66/SL7PC86

When you have created the shortcut; Click the **Sapnl.exe** icon on the desktop (if you use the default name).

Otherwise, use the following procedure; Select **Start**→ **Program**→ **3066PC** (for SL7PC66) or **3086PC** (for SL7PC86).

Once the software has been launched in either way, the initial screen appears as shown in Figure 1-7.

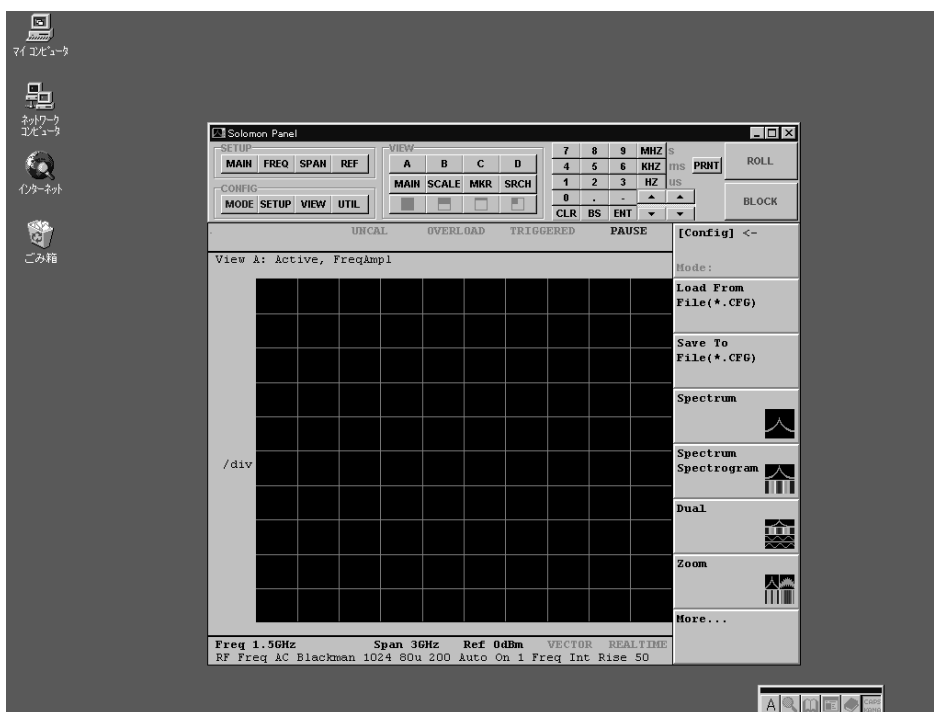


Figure 1-7: SL7PC66/SL7PC86 initial screen

Quitting SL7PC66/SL7PC86

When you have created the shortcut;
Click the **Sapnl.exe** icon on the desktop (if you use the default name).

Click on the  mark located at the top right corner.

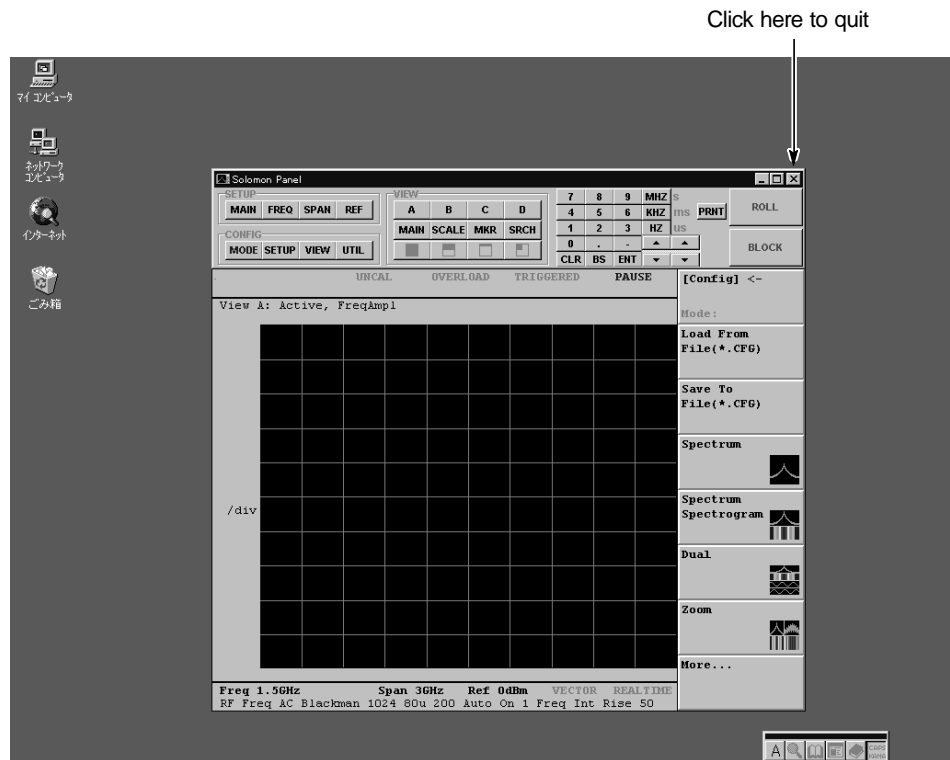


Figure 1-8: Quitting SL7PC66/SL7PC86



Operating Basics

Operating Basics

This section explains the following information:

- Window operation
- Screen Panel Interface and mouse operation
- Operations through the keyboard
- Operating procedure overview
- Restriction on use

This section shows comparison with operations of the 3066/3086 Spectrum Analyzer, but does not detail the feature or process. Operations of SL7PC66 and SL7PC86 are the same as those of the 3066 and 3086 except for the spectrum analyzer specific settings.

After reading this section, refer to the 3066 & 3086 User Manual (071-0501-01) to make display and analysis operations.

Window Operations

Figure 2-1 summaries window operations of this software.

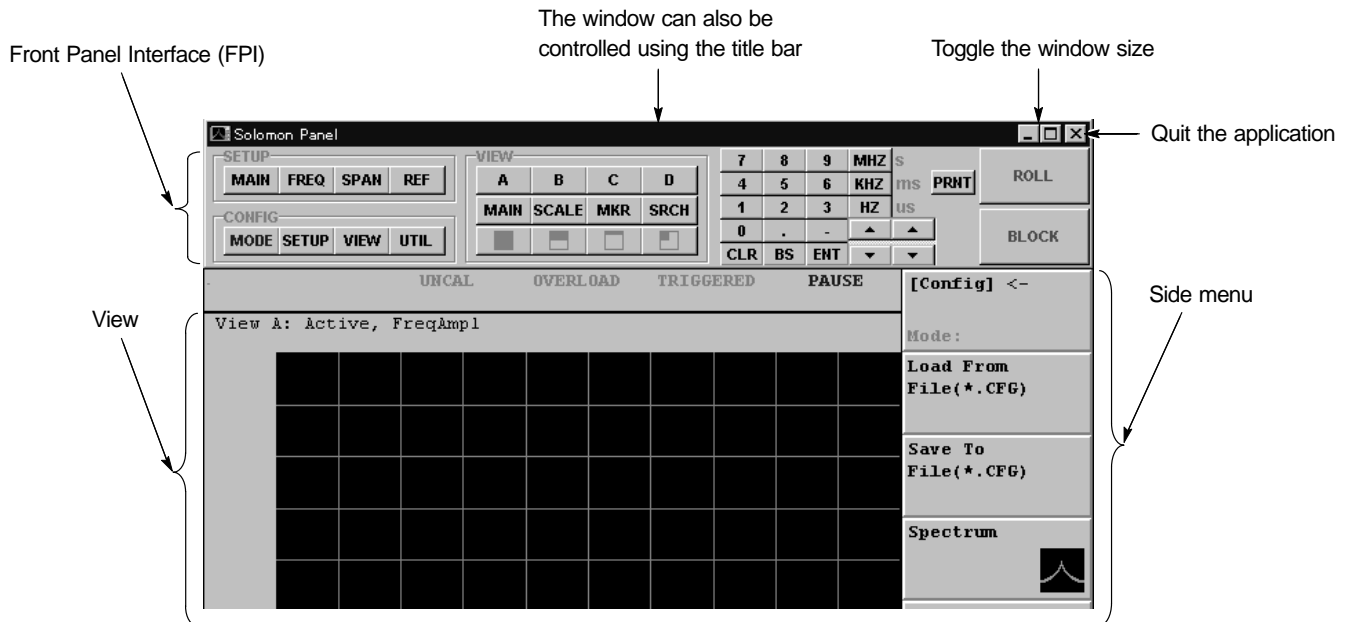


Figure 2-1: Summaries window operation of this software

Maximizing and Minimizing the Window

You can access to a menu by the mouse pointer to the title bar and click the right mouse button. In this menu, you can choose either Maximize or Minimize the window.

Maximize the window

If you select **Maximize**, the window expands fully in the screen. This is achieved also by click the middle button of the three top right buttons.

To restore the window to the initial size, click on the middle button of the three top right buttons.

Minimize the window

If you select **Minimum**, the FPI (Front Panel Interface) disappears and only the view and side menu expand fully in the screen. The FPI is not available in this condition

To restore the window to the initial size, left-button click the **Sapnl** icon on the taskbar, and select **Restore** from the menu that appears at this time.

Front Panel Interface (FPI) and Mouse Operation

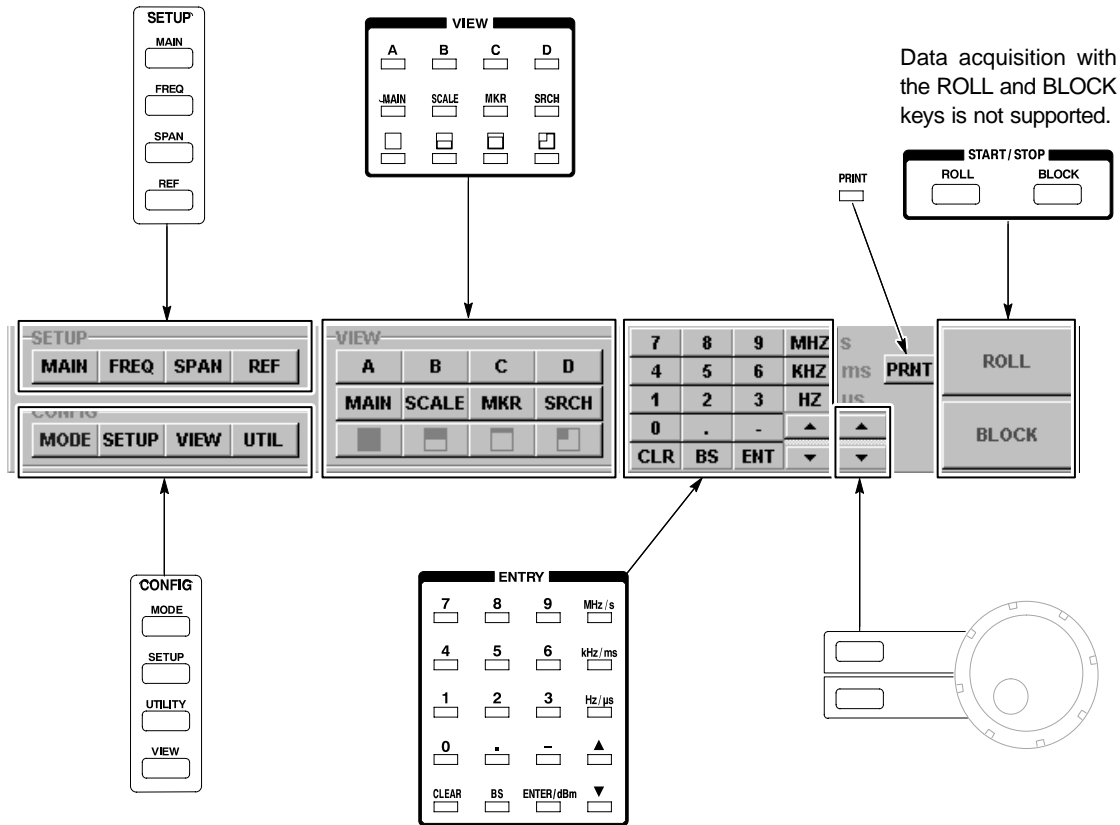
You can make the following operations using the mouse and keyboard:

- FPI operation
- Side menu operation
- Selecting a menu item from the CONFIG, SETUP, or VIEW menu
- Moving the marker and selecting a frame

FPI Operations

All buttons on the FPI are associated with the front panel keys. Though the rotary knob is not provided, its functions are achieved using the Up, Down, Left, and Right key on the numeric keypad of the FPI.

Figure 2-2 shows descriptions of association between the FPI keys and front panel keys.



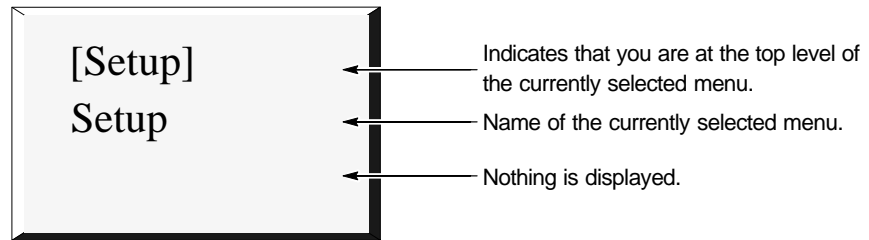
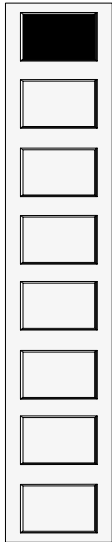
Instead, keyboard operations are available

Figure 2-2: Association between the analyzer front panel and FPI

Side Menu Operations

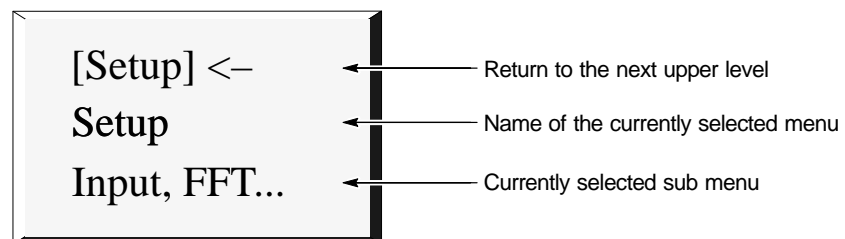
Side menu operations can be made also using the mouse click instead of side keys.

Figures 2-3 and 2-4 show how to make operations for the side menus.



Click on any item in this type of menu causes no response. To get response, make operations for any of the seven items below.

To change the menu, click the CONFIG, SETUP, VIEW, or PRINT key of the FPI or the field described in "Selecting the CONFIG, SETUP, or VIEW Menu" on page 2-7.

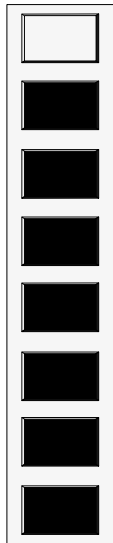


Clicking on this type of menu item, you can go to the next upper level.



Clicking on the Cancel key allows you to cancel this side menu and return to the previously displayed side menu.

Figure 2-3: Side menu operations (top items)



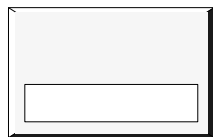
Clicking on a menu item labeled as "More..." allows you to go to another side menu at the same level.



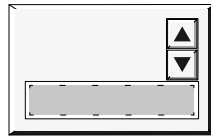
Clicking on a menu item containing with "...", the side menu at the next lower level is displayed.



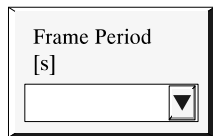
Clicking on this type of menu item causes the associated function to execute.



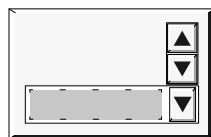
Used to input a numeric value. Clicking on this menu item allows you to go to the next one.



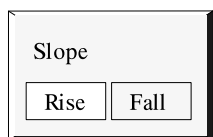
Clicking the menu item causes the Up and Down arrows to appear. If this button is on display, this menu is currently selected. By clicking on the Up and/or Down arrows, you can increase or decrease the current setting within the number field. In this condition, you can type the desired value through the numeric keypad or keyboard.



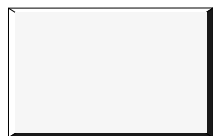
The arrow button at the right side of the field indicates that the drop-down list is available. Clicking on this menu item allows you to go to the next one.



Clicking on the menu item causes the Up and Down arrows to appear. If this button is on display, this menu is currently selected. You can select any item by clicking on the Up and/or Down arrows. If you click on the arrow button at the field, the drop-down list appears. You can select an item also from the list.



Toggle menu. Clicking on the associated menu item enables the selected item to be toggled.



Clicking on an unlabeled menu item causes no response.

Figure 2-4: Side menu operations (7 low menu items)

Selecting the CONFIG, SETUP, or VIEW Menu

You can access the side menu by click on the associated field shown in Figure 2-5 as well as by click on the menu key.

The CONFIG menu is displayed by clicking on this field.

Click on either view frame on display causes the associated VIEW menu to appear.

SETUP menu is displayed by clicking on this field.

Clicking on the specified on the screen causes the displayed contents of the side menu to change.

Figure 2-5: Menu selection by click operations

Without using FPI, you can make all operations except the following by operations shown in Figure 2-5.

- Reconfigure the view display
- Stepwise operations (available through the front panel STEP key)
- Hard copy operations (achieved with Windows 95 functions instead)

For operations to hide the FPI, see “Maximizing and Minimizing the Window” on page 2-2.

Moving the Marker and Selecting a Frame

Clicking in any point in the signal display area causes the marker to move to the next position.

- For 2-dimensional display, the marker moves to the measured data point where the click point is defined as the horizontal position.
- For 3-dimensional display, the frame containing the click point is selected and the marker moves to the measured data point where the click point is defined as the horizontal position. For 2-dimensional display view, the display is replaced by the contents of the appropriate frame at this time.

You can move the marker continuously by dragging it.

1. Place the mouse pointer over the marker. Then press the left mouse button.
2. With the mouse button held down, drag the pointer to the desired position. Once the marker reaches it, release the mouse button.

For the delta marker, you can move only the marker by mouse operations.

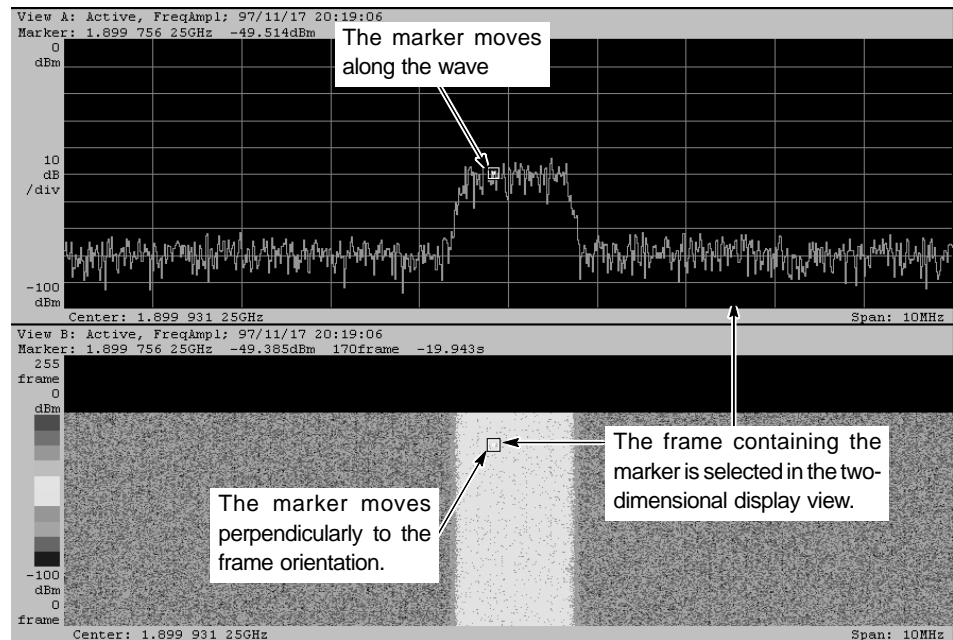


Figure 2-6: Moving the marker and selecting a frame

NOTE

The mouse is not available in moving the marker directly in the Polar, CDMAPolar, EyeDiagram, or SymbolTable view. You can move the marker indirectly in such a view by specifying the numeric value in the Time Marker menu item of each view or moving the marker in the EVM view.

Operations through the Keyboard

You can also use the keyboard to achieve operations made through the numeric keypad of the front panel or FPI. Table 2–1 lists the correspondence between the numeric keypad and keyboard keys.

Table 2-1: Correspondence between the numeric keypad and keyboard keys

Keypad key	Keyboard key
0 – 9	0 – 9
CLR	ESC
BS	Back Space
ENT	ENTER
▲ and ▼	Up and Down keys
Hz	ENTER
kHz	k + ENTER
MHz	M + ENTER
s	ENTER
ms	m + ENTER
μs	u + ENTER

Operation Overview

This software does not support signal capture. This section shows the flow of operations, assuming that the data has been captured and saved in files.

Flow of Operation

1. Save the 3066/3086 settings and captured data in the CFG and IQ files respectively, either through a network or media such as floppy disks.
2. Copy the CFG and IQ files to a PC on which this software operates.
3. Load the settings file (.CFG) using this software.
 - Use CONFIG : MAIN → Load (*.CFG) to load the settings information.
4. Load the data file (.IQ) using this software.
 - Use CONFIG : UTILITY → SaveLoad → Load... → Load From File (*.IQ) to load the settings information.

Now the data is plotted in the view as shown in the display example in Figure 2–7.

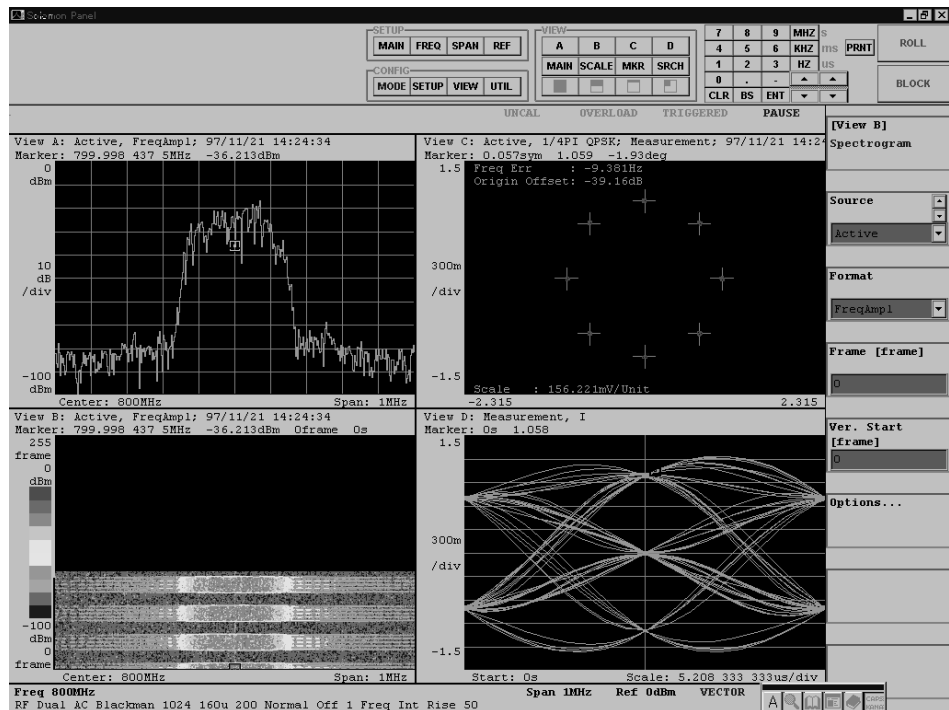


Figure 2-7: Data display example

In addition, you can load the data into data registers D1 to D8 and register pairs D1D2 to D7D8.

5. Modify the settings, as desired, to analyze the data.

For example, you can view the modulation accuracy of the digital modulation signal by changing View D to EVM View.

Restrictions on Use

Because this software does not have the functions specific to the 3066/3086 Spectrum Analyzer, available functions are limited. Table 2-2 summarizes the restrictions.

Table 2-2: Restrictions on use

Menu	Description
CONFIG	All configurations menu items except SETUP take effect.
SETUP	All settings with this menu (e.g., input mode, memory mode, frequency, span, frame cycle, block size, trigger, zoom) are overridden.
VIEW	There are the following restrictions in each view: <ul style="list-style-type: none"> ▪ For Source settings, Zoom is overridden. ▪ The Average settings can be made with Source; however, the Average function in CONFIG:UTILITY is only available. ▪ All menu items influencing SETUP (e.g., Mkr → Freq, Mkr → Zoom) are overridden.

The data may not be displayed in the views unless proper settings have been made for the loaded data.

