

# Read This First

## 80A00, 80C00, 80E00, and 82A00 Series Modules

### Supported instruments

The 80A00, 80C00, 80E00, and 82A00 Series Modules are for use with the DSA8300 Digital Serial Analyzer, as well as the TDS/CSA8000, TDS/CSA8000B, and TDS/CSA/DSA8200 series instruments.

### Handle modules safely

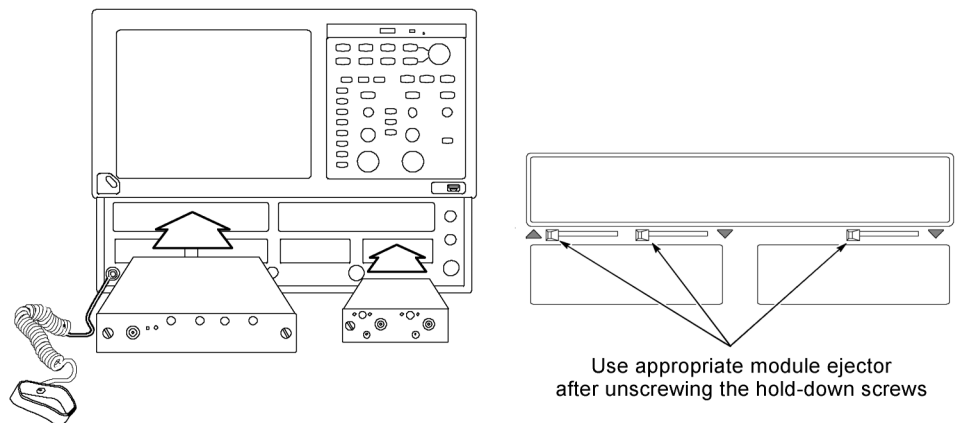


**CAUTION.** *Electrostatic discharge (ESD) can damage sampling module inputs and outputs. Always store and transport modules in a static-free container, with their supplied terminations installed. Do not transport or ship the instrument with the modules installed in the instrument compartments.*

*Always use a safely-grounded wrist strap (provided with your instrument) when installing modules in the mainframe, handling modules, or making connections.*

*Discharge cables to ground before attaching them to modules.*

### Install a module



**Figure 1: Module insertion and ejector locations**

1. Power off the instrument using the front-panel **On/Standby** switch.
2. Connect and wear the instrument antistatic wrist strap to the front panel ground connection.
3. If installing a large-compartment module (upper slots), turn the module hold-down screws counterclockwise to rotate the retaining tabs to a vertical position before inserting the module.



4. Push the module into a compartment, using firm pressure. When the module is seated, turn the hold-down screw(s) clockwise to lock the module into place.
5. Power on the instrument. Let the instrument warm up for 20 minutes. In the TekScope application, click **Utilities > Compensate** and run a compensation on the newly-installed module. You must also run a compensation if a module is moved from one slot to another, or an extender is installed, changed, or removed from a module.

## Remove a module



**CAUTION.** Always use the module ejectors to eject a module from a compartment. Do not pull the module by the connectors; you can damage the connectors if you use them to pull out a module.

---

1. Remove all cables or probes from the module connectors.
2. Power off the instrument using the front-panel **On/Standby** switch.
3. Connect and wear the instrument antistatic wrist strap to the front panel ground connection.
4. Turn the module hold-down screws counterclockwise.
5. Use the module ejector lever to unseat the module. (See Figure 1.) The arrow near an ejector handle shows which compartment that ejector controls.
6. Use the module hold-down screws to pull the module partly out of the compartment. Then hold the module chassis and pull the module from the instrument.

## Moving modules while powered on

The TekScope **View/Change Module Config** function lets you remove, install, or move modules in the instrument without powering down the mainframe. See the *DSA8300 Digital Serial Analyzer Quick Start User Manual* for information on how to use this function.



**CAUTION.** Installing or changing modules while the instrument is powered on requires DSA8300 TekScope software version **6.1.X or greater**. For DSA8300 TekScope software versions earlier than 6.1.X, **always power off the mainframe to remove, install, or move modules**. Failure to do so may result in damage to the module or mainframe. You can download and install the latest DSA8300 software from [www.tek.com/software](http://www.tek.com/software).

---

## User documentation for modules

Module documentation in Adobe PDF format is located the Product Documentation Browser CD-ROM (Tektronix part number 063-4356-XX) that ships with the instrument. To download the most recent versions of manuals from the Tektronix Web site:

1. Go to **www.tek.com**.
2. Enter the module nomenclature, or the manual part number, in the Downloads **Enter Model Number** field.
3. Select **Manuals** from the Select Download Type list and click **GO**.
4. Click **Sort by DATE** to place the newest files at the top of the list.
5. Click the document link to download the file.

Contact Tektronix Customer Support to purchase printed copies of manuals.

## Module software compatibility

To verify that your TekScope application software version supports a specific sampling module or is appropriate for the version of Microsoft Windows loaded on your mainframe, do the following:

1. Click **Help > About** in the TekScope application to show the current software version.
2. Use the following tables to find the product software version required for your module and instrument.
3. If you need to download a newer version of oscilloscope application software:
  - a. Go to **www.tek.com**.
  - b. Enter the model number for your instrument in the Downloads **Enter Model Number** field.
  - c. Select **Software** from the Select Download Type list and click **GO**.
  - d. Select the appropriate software and follow the on-screen instructions to download and install the software.

---

**NOTE.** *Newer software versions support all previously-released modules.*

---

**Table 1: DSA8300 instrument software and module compatibility**

TekScope application software version <sup>1</sup>	Supported modules <sup>2</sup>	Required instrument operating system
6.0.3.X	80C01, 80C01-CR, 80C02/-CR, 80C03/-CR, 80E01, 80E02, 80E03, 80E04, 80A01, 80A02, 80C04/-CR1, 80C04-CR2, 80C05, 80C06, 80C07/-CR1, 80C08/-CR1, 80C09/-CR1, 80A03, 80C08B/-CR1-CR2, 80C10, 80E06, 80C07B/-CR1, 80C08C/-CR1/-CR2/-CR4, 80C11/-CR1/-CR2/-CR3/-CR4, 80C12, 80A05, 82A04, 80E07, 80E08, 80E09, 80E10, 80C02 Option 01, 80C08C Option 01, 80C10B, 80C11 Option 01, 80C12 Option 01, 80C12B, 80C14, 80C25GBE	Microsoft Windows 7 Ultimate (32 bit) v0.9

<sup>1</sup> Listed version number or greater. Newer versions of the TekScope application software support all previously-released modules.

<sup>2</sup> The DSA8300 does not support the 80A06 module.

**Table 2: TDS/CSA8000, TDS/CSA8000B and TDS/CSA/DSA8200 series instruments software and module compatibility**

<b>TekScope application software version <sup>1</sup></b>	<b>Supported modules</b>	<b>Required instrument operating system <sup>2</sup></b>
1.0	80C01, 80C01-CR, 80C02/-CR, 80C03/-CR, 80E01, 80E02, 80E03, 80E04, 80A01, 80A02	
1.1	80C04/-CR1	
1.2	80C04-CR2, 80C05, 80C06	
1.3	80C07/-CR1, 80C08/-CR1, 80C09/-CR1, 80A03	Microsoft Windows 98
1.4	80C08B/-CR1-CR2, 80C10, 80E06	
1.5	80C07B/-CR1, 80C08C/-CR1-CR2/-CR4, 80C11/-CR1/-CR2/-CR3/-CR4	
2.0.1.3 <sup>3</sup>	80C12 (limited), 80A05 (limited)	
2.0.1.5	80C12, 80A05	
2.1	82A04 (Must be installed in a DSA8200, CSA8200, or TDS8200 mainframe)	Microsoft Windows 2000
2.4	80A06	
2.5	80E07, 80E08, 80E09, 80E10 <sup>4</sup>	
5.0	80C02 Option 01, 80C08C Option 01, 80C10B, 80C11 Option 01, 80C12 Option 01, 80C25GBE	Microsoft Windows XP
5.1.2	80C12B, 80C14	

<sup>1</sup> Newer versions of the TekScope application software support all previously-released modules.

<sup>2</sup> Contact Tektronix for operating system upgrade information.

<sup>3</sup> Replace product application software version 2.0.1.3 with the latest available version.

<sup>4</sup> Using the 80E07, 80E08, 80E09, or 80E10 modules in mainframes with older versions of product software may cause the application to fail to start.