

# Instructions



## **RSA6100A Series Real-Time Spectrum Analyzers Advanced Signal Analysis (Option 20) Upgrade 071-1920-00**

### **Warning**

The servicing instructions are for use by qualified personnel only. To avoid personal injury, do not perform any servicing unless you are qualified to do so. Refer to all safety summaries prior to performing service.

**[www.tektronix.com](http://www.tektronix.com)**



071192000

Copyright © Tektronix. All rights reserved. Licensed software products are owned by Tektronix or its subsidiaries or suppliers, and are protected by national copyright laws and international treaty provisions.

Tektronix products are covered by U.S. and foreign patents, issued and pending. Information in this publication supercedes that in all previously published material. Specifications and price change privileges reserved.

TEKTRONIX and TEK are registered trademarks of Tektronix, Inc.

## **Contacting Tektronix**

Tektronix, Inc.  
14200 SW Karl Braun Drive  
P.O. Box 500  
Beaverton, OR 97077  
USA

For product information, sales, service, and technical support:

- In North America, call 1-800-833-9200.
- Worldwide, visit [www.tektronix.com](http://www.tektronix.com) to find contacts in your area.

# Kit Description

This kit describes the installation of the Advanced Signal Analysis Upgrade (Option 20) in an RSA6100A Series Real-Time Spectrum Analyzer.

## Products

**RSA6100A Series** All serial numbers

## Kit Parts List

Quantity	Part number	Description
1 ea	071-1920-00	MANUAL,TECH:INSTALLATION,RSA6UP, OPT20
1 ea	NS	DATA SHEET; SOFTWARE OPTION KEY AUTHORIZATION CERTIFICATE, UPGRADE KITS
1 ea	NS	LABEL, MANUFACTURED; OPTION KEY UPGRADE LABEL 2.100 X 2.700, SAFETY CONTROLLED

**NS Not Saleable**



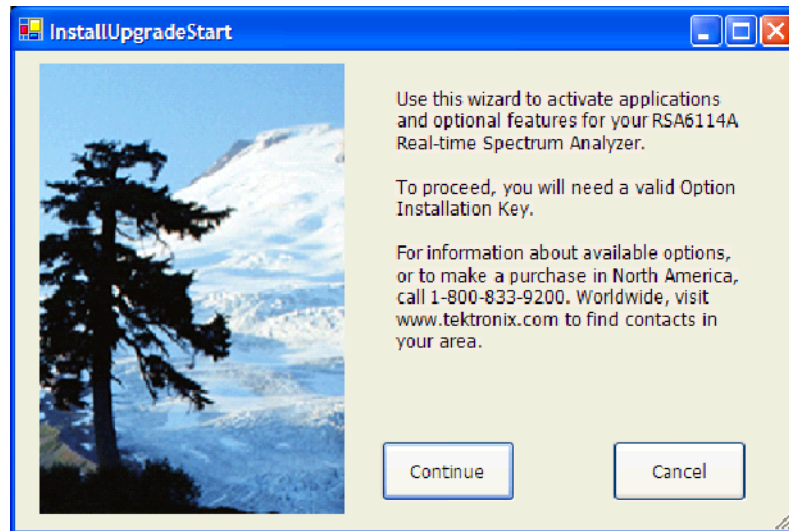
# Installation Instructions

The software that performs Advanced Signal Analysis is included in all spectrum analyzer application installations, but an option installation key is required to activate it. To activate the Advanced Signal Analysis capability, you will enter the new option installation key supplied with this kit into the spectrum analyzer application.

## Install Option Key

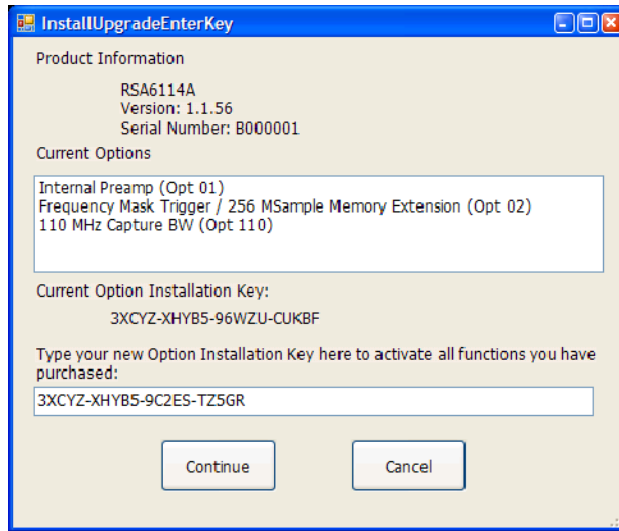
To activate the Advanced Signal Analysis option:

1. In the spectrum analyzer application, select **Tools > Install Upgrades**. The Install Upgrade wizard starts, as shown in Figure 1. Click **Continue**.



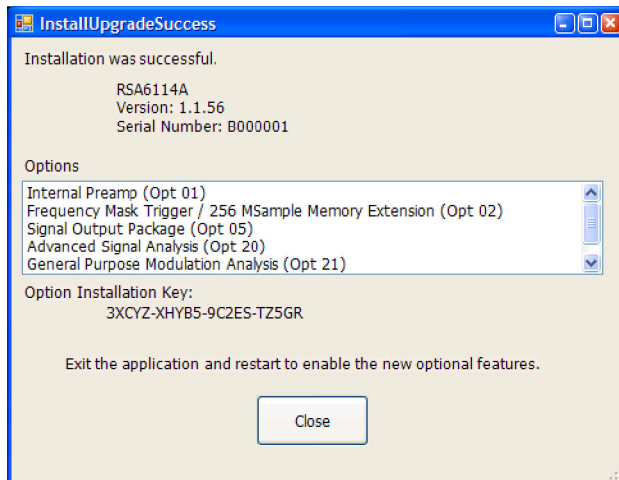
**Figure 1: Starting the option upgrade**

2. The Install Upgrade Enter Key screen appears (see Figure 2).



**Figure 2: Entering the option installation key**

3. Type the option installation key into the empty text box and click **Continue**. An Installation Success dialog opens, as shown in Figure 3.



**Figure 3: Upgrade success notification**

4. Click **Close**, and then exit and restart the RSA6100A application, to enable the new feature.
5. Press the **Displays** button on the RSA6100A.

6. In the Folders panel, verify that you can now select the RF Measurements and Pulsed RF folders.

This completes the installation of the option key.

## Install Option Key Label

- Place the new option key label over the existing label on the instrument rear panel.

This completes the installation of the Advanced Signal Analysis (Option 20) upgrade kit.

■ End of document ■

