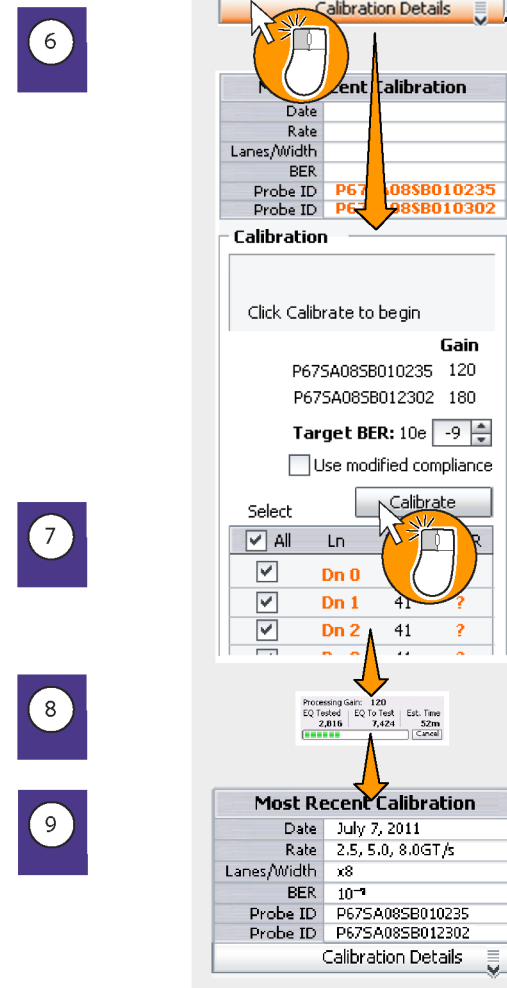
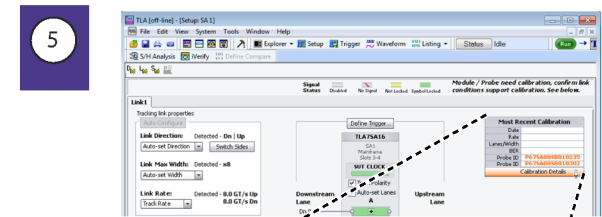
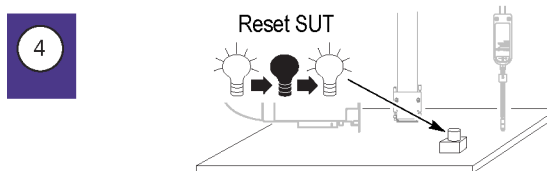
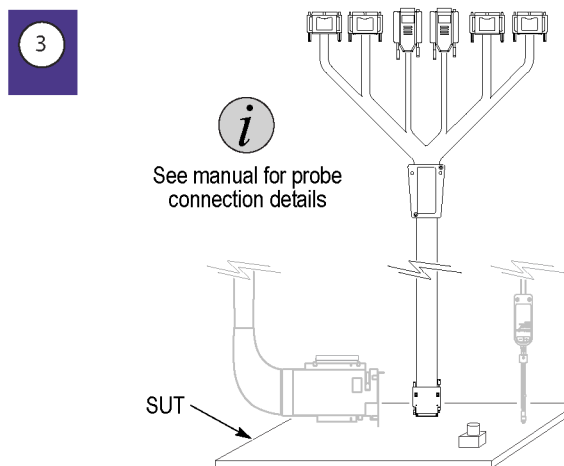
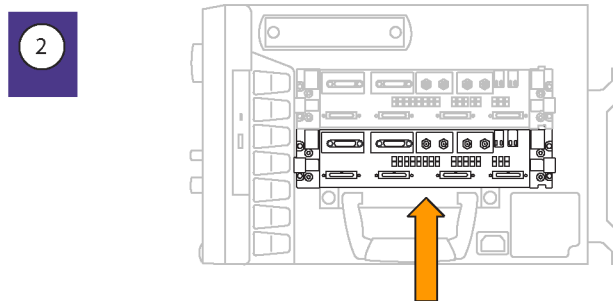
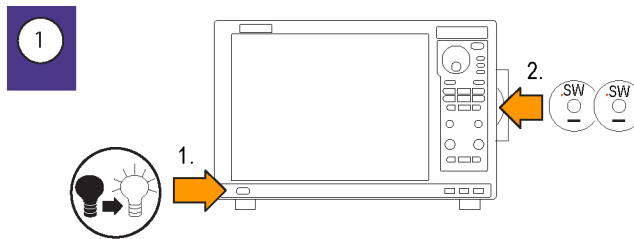
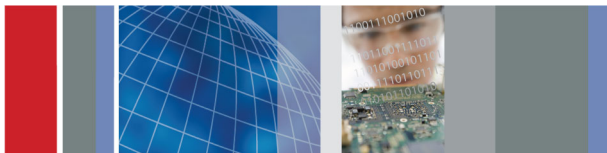


# Tektronix Logic Protocol Analyzers Quick Reference Installation

## Instructions



Probe calibration not available with TLA7S08 or TLA7S16 Modules



Explore the Setup window to modify the setup, define hardware filters or create a trigger

Click on the Open BEV Configuration tab to enable Flow Control BEV

Transaction window displays protocol layer data

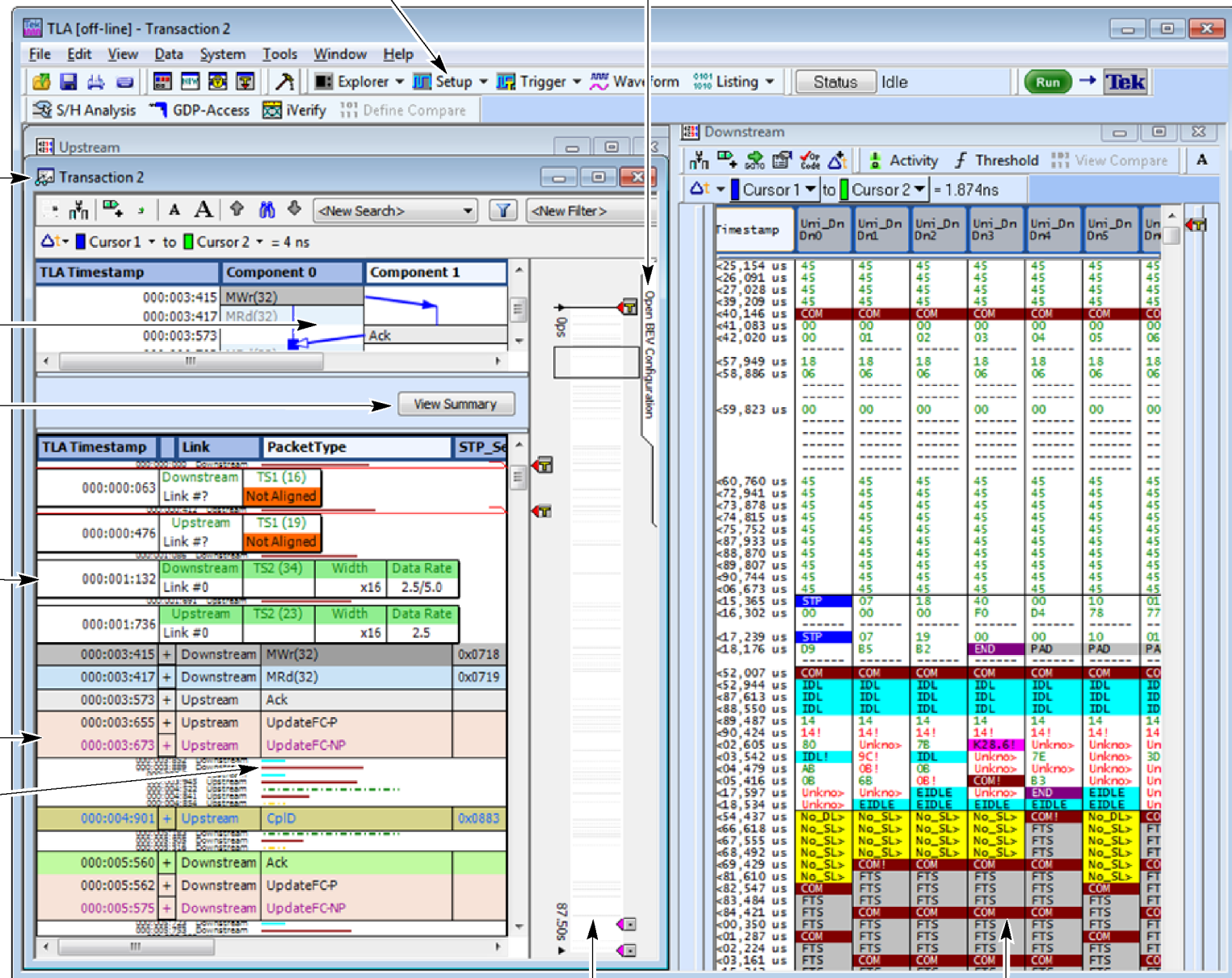
Transaction stitching

Click on the View Summary button for an overview of the entire acquisition

Training sets (PCIE)

DLLP packets (PCIE)

Errors, PHY layer ordered sets



Bird's eye view  
(full acquisition data analysis viewer)

Listing window  
(lane by lane data)