

A 3-Step Pre-Startup guide to setting up a DPO7000SX Multi-Instrument Configuration

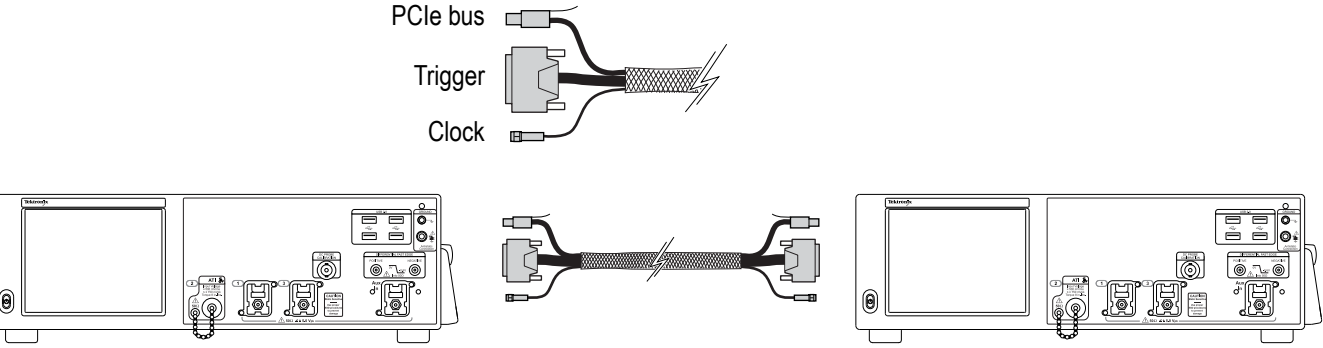
Multi-Instrument Star Configuration cabling guide

1

UltraSync™ bus cable bundle

UltraSync bus cable will connect any Multi-Instrument Configuration capable unit.

Cables must be connected to units prior to start-up, restart will be required if unit is turned on before connecting cables. Use electrostatic protection, including an antistatic wrist strap.



2

Suggested UltraSync™ bus cable connection order

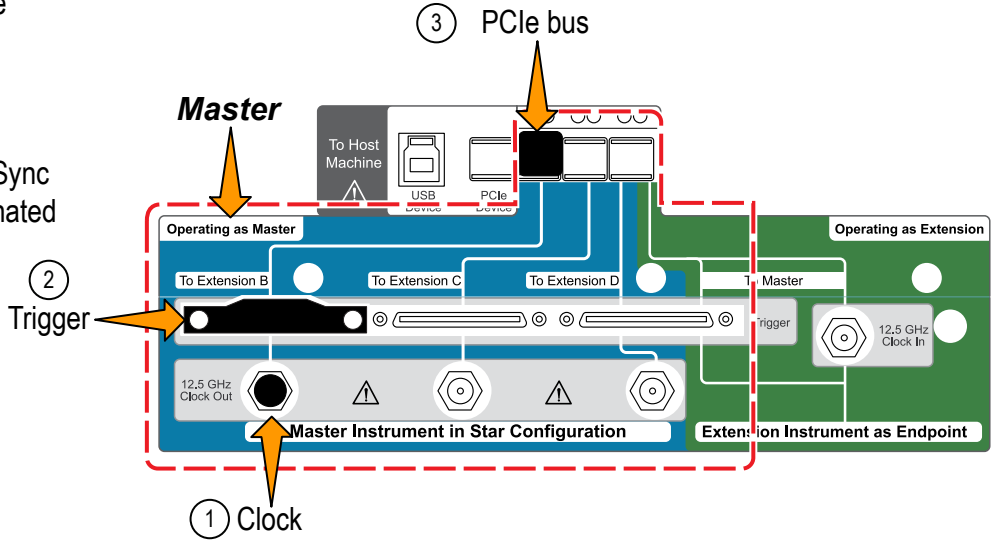
Connecting UltraSync bus cable bundles on Master

Select the master instrument

At **Master** connect each UltraSync cable bundle set to ports designated

“To Extension”

1. Connect Clock Out (8 in-lbs torque)
2. Connect Trigger
3. Connect PCIe

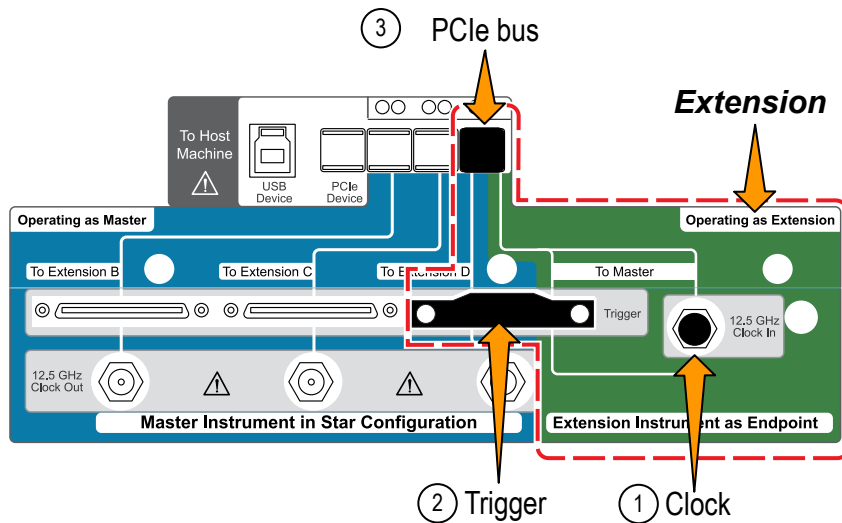


Connecting UltraSync bus cable bundles on Extension

At **Extension** connect each UltraSync cable bundle set to ports designated

“To Master”

1. Connect Clock In (8 in-lbs torque)
2. Connect Trigger
3. Connect PCIe

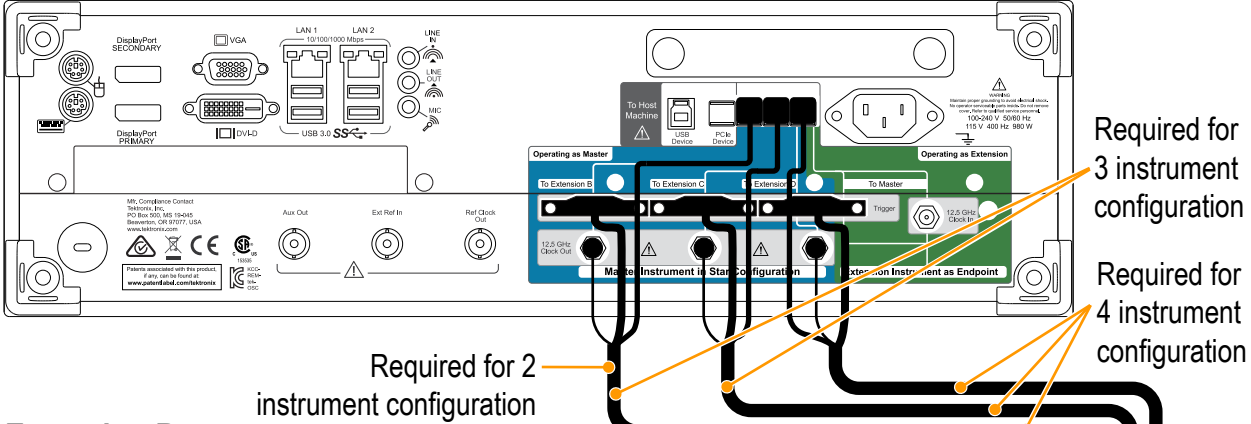


3

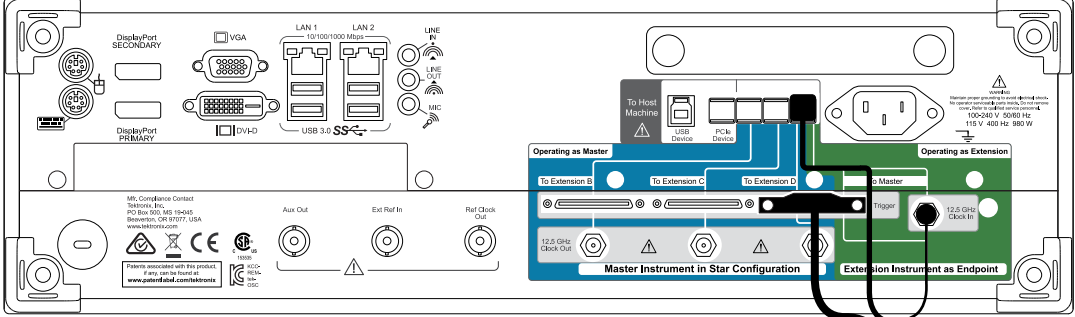
Unit connection order

Connect each Extension to Master sequentially from left to right.
Connect extensions to master in star pattern, do not daisy chain units.

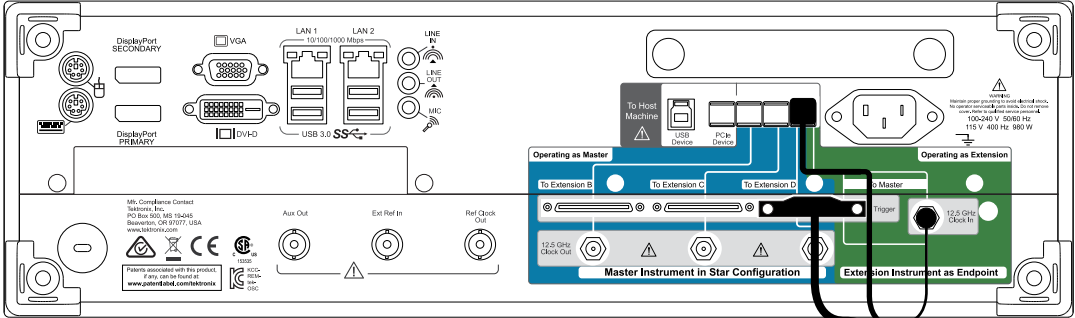
Master



Extension B



Extension C



Extension D

