

Instructions



MTM4UP Software Option Upgrades for MTM400 MPEG Transport Monitor

075-0779-02

Warning

The servicing instructions are for use by qualified personnel only. To avoid personal injury, do not perform any servicing unless you are qualified to do so. Refer to all safety summaries prior to performing service.

www.tektronix.com



075077902

Copyright © Tektronix, Inc. All rights reserved. Licensed software products are owned by Tektronix or its suppliers and are protected by United States copyright laws and international treaty provisions.

Tektronix products are covered by U.S. and foreign patents, issued and pending. Information in this publication supercedes that in all previously published material. Specifications and price change privileges reserved.

TEKTRONIX and TEK are registered trademarks of Tektronix, Inc.

Contacting Tektronix

Tektronix, Inc.
14200 SW Karl Braun Drive or P.O. Box 500
Beaverton, OR 97077 USA

For product information, sales, service, and technical support:

- In North America, call 1-800-833-9200.
- Worldwide, visit www.tektronix.com to find contacts in your area.

Kit Description

This document provides instructions for the MTM400 Software Option upgrade. The following upgrades are currently available:

Table 1: MTM400 field upgrade kits (software)

Product	Option	Description
MTM4UP	01	Field upgrade kit to add Recording Capability
	02	Field upgrade kit to add Transport Stream Service Information Analysis (PSI/SI/PSIP/ARIB structure view and repetition graphs)
	03	Field upgrade kit to add Template Testing With Template Scheduling (for user defined service plan testing)
	04	Field upgrade kit to add PCR Analysis with Graphical Results views
	05	Field upgrade kit to add Bit rate testing including PID groups and PID variability
	06	Field upgrade kit to add Service Logging

Software options are enabled by an Option Key – a unique string of alphanumeric characters which is applied to the MTM400 via the remote user interface. Each Option Key can enable one or more options.

BIOS Version Requirement

Verify the BIOS version installed in your MTM400 monitor before you perform the software installation instructions provided in this kit. You can find the BIOS version number listed in the Info display of the Device view.

The MTM400 monitor must have BIOS version 2.07 installed before the instrument will load software version 2.0.7 or above.

Acquiring the Option Key

The following basic information is shipped with the upgrade kit:

- A document recording the Option Key and the unit to which it can be applied. The unit identity will take the form of the Serial Number and the MAC (Media Access Control) address (this is unique to each unit).
- The MTM400 Software Option Upgrade Instructions (075-0779-02) - this document.



CAUTION. *To avoid losing your options, do not misplace the documentation that is included with this kit. This contains the option installation key number. If the battery-backed RAM in the unit is reset, the Option Key will be needed to reenable your options.*

Note that the Serial Number identifies the MTM400 unit. The MAC address is allocated to the Transport Stream Processor board. If the processor board is changed, it will have a different MAC address and new Option Keys will need to be issued.

NOTE. *The MAC address is printed on the label on the top of the unit and above the network port at the rear of the unit.*

Option Keys

The Option Key is a string of alphanumeric characters in the form nnnnn-nnnnn-
nnnnn-nnnnn. Each Option Key is unique; it is generated specifically for one
MTM400 unit using the MAC address and the Serial Number. An Option Key
generated for one MTM400 unit will not work when applied to another
MTM400 unit.

The Option Key is supplied as part of the Upgrade documentation.

The upgrade instructions given in the remainder of this document are common to
all options.

Installation Instructions

Software options are enabled in the MTM400 by the application of an Option Key. The Option Key is an alpha-numeric string, which is entered on the License dialog. The License Upload dialog is accessible using the Device View and the **Upload License** button.

The procedure is outlined below. Power and networking are required.

1. Power up the MTM400 unit and wait for initialization to complete.
2. From a networked client PC, open the Remote User Interface.

The MTM400 user interface can also be accessed via the Web Monitoring Systems Manager (WebMSM). This is described in the WebMSM User Manual.

- a. Launch Microsoft Internet Explorer.
- b. In the browser address bar, enter the network identity or IP address of the MTM400 unit, such as, <http://TSMonitor01>.

When the Enter key is pressed, a Java applet is downloaded from the MTM400 unit and launched. The file size is approximately 1.5 MB; the download time will depend on the network speed and traffic.

3. The MTM400 splash screen appears, overlaid shortly thereafter by the Login Details dialog box as shown in Figure 1.

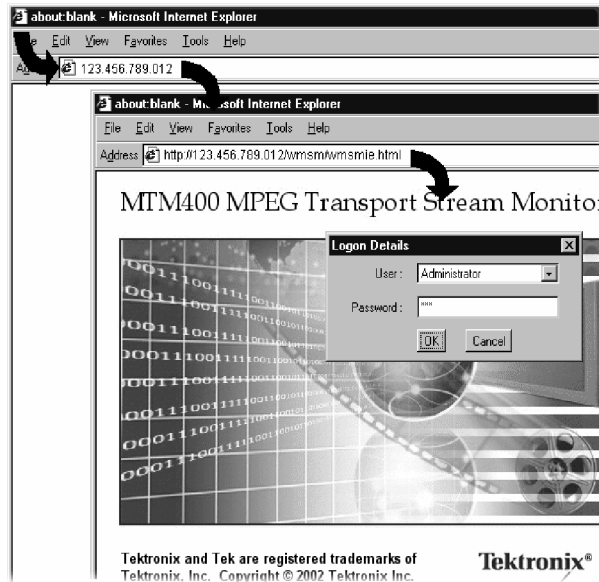


Figure 1: Logging On

- a. Select the Administrator User name from the drop-down list. (The User option does not have sufficient permissions to upgrade software options.)
- b. Enter the password. The default password for the Administrator is tek.
Select **OK** to accept the details. Select **Cancel** to close the dialog box.
(To redisplay the **Login Details** dialog box, either reenter the network identity of the MTM400 or select the **Refresh** button in the browser.)
- c. The Hotspot view is displayed.

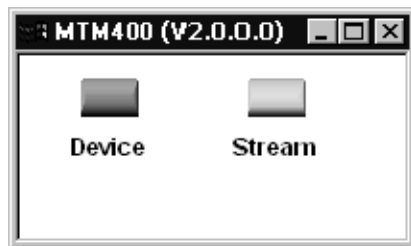


Figure 2: Hotspot View

The Hotspot view provides access to the device and stream monitoring views of the MTM400 being accessed.

4. Open the Device View and select the Configuration screen.

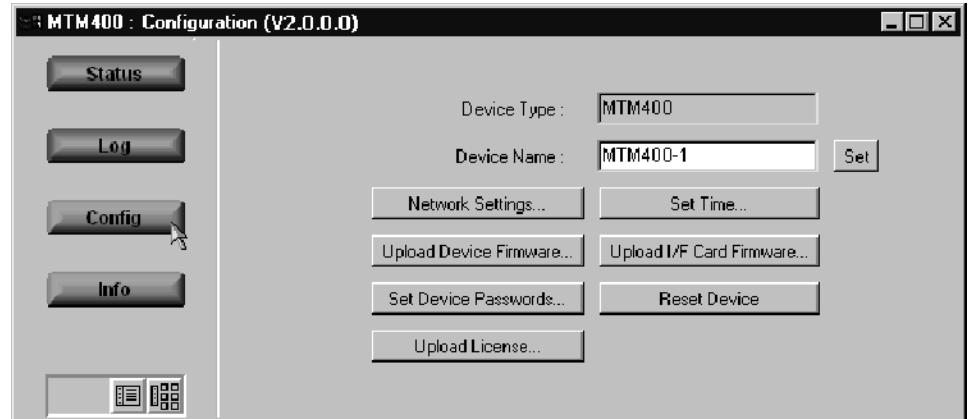


Figure 3: Device Configuration Screen

5. Select **Upload License** to open the **License Upload** dialog box.



Figure 4: License Upload Dialog

6. Enter the Option Key.

NOTE. The Option Key string is case-sensitive and must be entered exactly as given.

7. Select **Upload**.

8. Note the upload progress messages displayed in the **License Upload** dialog box.

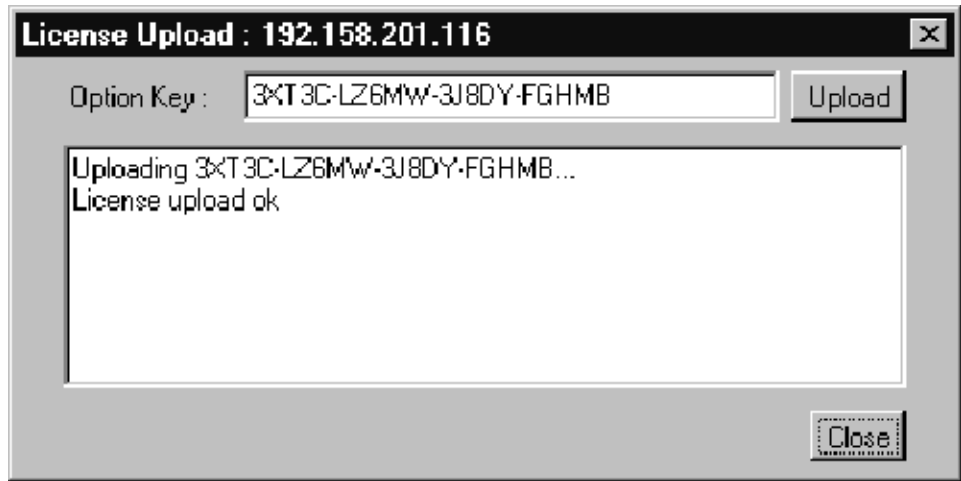


Figure 5: License Upload OK

9. If the message “License upload ok” is displayed, select **Close**.
10. The License Changed dialog box is displayed. Select OK to restart the MTM400 unit.



Figure 6: License Changed dialog

Restarting the unit will implement the licensed options. During restart all screens will remain open, but the buttons will be grayed out for a short period.

If the Option Key is rejected, the **License Changed** dialog box will still be displayed when the **License Upload Close** is selected. Select **Cancel** to terminate the activity.

11. If the Option Key upload and restart is successful, verify the new software options as described on page 10.

If the upgrade is still unsuccessful, contact Tektronix Technical Support. Ensure that the following information is available:

- MTM400 Serial Number
- MTM400 MAC Address
- The upgrade Option Key
- The current Option Key (if known)

Troubleshooting

If the Option Key upload is rejected, the following notes may help:

- Check and reenter the Option Key.
- Inspect the documentation accompanying the Option Key and ensure that it is being applied to the correct MTM400 unit.
- In a network containing more than one MTM400 unit, ensure that the User Interface is viewing the correct MTM400 unit. This can be verified by selecting **Info** from the Device View and verifying the MAC Address compared with the documentation.

If the upgrade is still unsuccessful, contact Tektronix Technical Support. Ensure that the following information is available:

- MTM400 Serial Number
- MTM400 MAC Address
- The upgrade Option Key
- The current Option Key (if known)

Verifying the Software Options

The information given in this section allows the user to verify that the required option has been enabled. Refer to the *MTM400 User Manual (071-1224-xx)* for information about the use of the option. When verifying options, you need to be logged in as the Administrator and a transport stream needs to be supplied to the instrument.

Option	MTM4UP01
Description	Field upgrade kit to add triggered recording capability.
Verification	The Recording button is displayed on the Stream Menu Bar.

Option	MTM4UP02
Description	Field upgrade kit to add transport stream service information analysis (PSI/SI/PSIP/ARIB view)
Verification	The SI View and SI Graphs button is displayed on the Stream Menu Bar.

Option	MTM4UP03
Description	Field upgrade kit to add template testing (for user-defined service plan testing).
Verification	The Template button is displayed on the Stream Menu Bar. The Template Checking checkbox is added to the Configuration screen.

Option	MTM4UP04
Description	Field upgrade kit to add in-depth PCR analysis with graphical result views.
Verification	The PCR button is displayed on the Stream Menu Bar, providing graphical representation of real time analysis of PCRs.

Option	MTM4UP05
Description	Field upgrade kit to add bit rate testing functionality.
Verification	Limits in PID view; PID Bit Rate added to Test: drop-down menu; PID Groups button added; PID variability.

Option	MTM4UP06
Description	Field upgrade kit to add service logging.
Verification	Service Logging data is available via the HTTP interface. No indication that Service Logging is enabled is given on the user interface.

❑ End of document ❑

