

# Instructions



## **MTM4UP FW Firmware Upgrade for MTM400 MPEG Transport Stream Monitor 075-0802-04**

### **Warning**

The servicing instructions are for use by qualified personnel only. To avoid personal injury, do not perform any servicing unless you are qualified to do so. Refer to all safety summaries prior to performing service.

**[www.tektronix.com](http://www.tektronix.com)**



075080204

Copyright © Tektronix, Inc. All rights reserved. Licensed software products are owned by Tektronix or its subsidiaries or suppliers, and are protected by national copyright laws and international treaty provisions.

Tektronix products are covered by U.S. and foreign patents, issued and pending. Information in this publication supercedes that in all previously published material. Specifications and price change privileges reserved.

TEKTRONIX and TEK are registered trademarks of Tektronix, Inc.

## **Contacting Tektronix**

Tektronix, Inc.  
14200 SW Karl Braun Drive  
P.O. Box 500  
Beaverton, OR 97077  
USA

For product information, sales, service, and technical support:

- In North America, call 1-800-833-9200.
- Worldwide, visit [www.tektronix.com](http://www.tektronix.com) to find contacts in your area.

# Kit Description

This document provides instructions for the MTM400 Firmware upgrade kit.

Modifications have been made to the MTM400 firmware; these modifications also affect the Remote User Interface (RUI).

Installing the WebMSM upgrades ensures compatibility with the MTM400 upgrade.

Overall, the steps required are as follows:

- Check and Upload the MTM400 Firmware.
- Upgrade the WebMSM application (if present).
- Upgrade the WebMSM Configuration Editor application (if present).

The WebMSM applications require a license to enable them. If the applications were not previously installed, the disks can be discarded.

## Products

**MTM400 MPEG Transport Stream Monitor**  
**WebMSM**  
**WebMSM Configuration Editor**

### Serial Number Variants

Two variants in the construction of the MTM400 are currently available. They are differentiated by the format of the serial number. The serial number of each unit is printed on a label attached to the unit.

**Table 1: Serial number formats**

GB400-xxxx (Example: GB400-1234)
Bxxxxxx (Example: B010100)

## Kit Parts List

Quantity	Part number	Description
1 EA	063-3719-xx	Firmware Pkg, CD-ROM; MTM400 Applications
1 EA	075-0802-04	Instructions; MTM4UP FW



# Installation Instructions

The procedure is outlined below. Power and networking are required.

1. Power up the MTM400 unit and wait for initialization to complete.
2. From a client PC, open the Remote User Interface.
  - a. At a networked PC, launch Microsoft Internet Explorer.
  - b. In the browser address bar, enter the network identity or IP address of the MTM400 unit, such as `http://TSMonitor01`.

Press Enter. A Java applet is downloaded from the MTM400 unit and launched. The file size is approximately 1.5 MB; the download time will depend on the network speed and traffic.

The MTM400 user interface can also be accessed via the Web Monitoring Systems Manager (WebMSM). This is described in the WebMSM User Manual.

## Upgrading the MTM400 Firmware

### Check the Processor Board Software Version

In the Device View, select **Info** to display the Device Information screen.

The Device Information view details the software and hardware build state of the MTM400. (The values shown in this example screenshot will differ from the values shown on your display.)

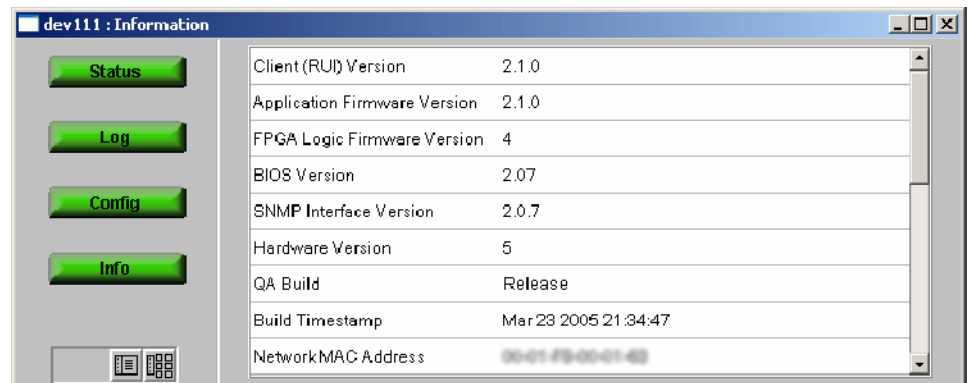


Figure 1: Device View - Information

If the **Processor Board Software** value is less than 2.1.0, the processor board firmware *must* be updated. A CD-ROM with the necessary firmware on it is supplied as part of the kit.

Also, compare the MAC Address with that shown on the new kit label. The addresses must be the same for the Option Key to work correctly.

### Uploading the Device Firmware



**CAUTION.** You must clear the Device Log immediately before uploading the firmware.

1. In the Device View, select **Log** to display the Device Log screen. Select **Clear Log** to clear the device log.

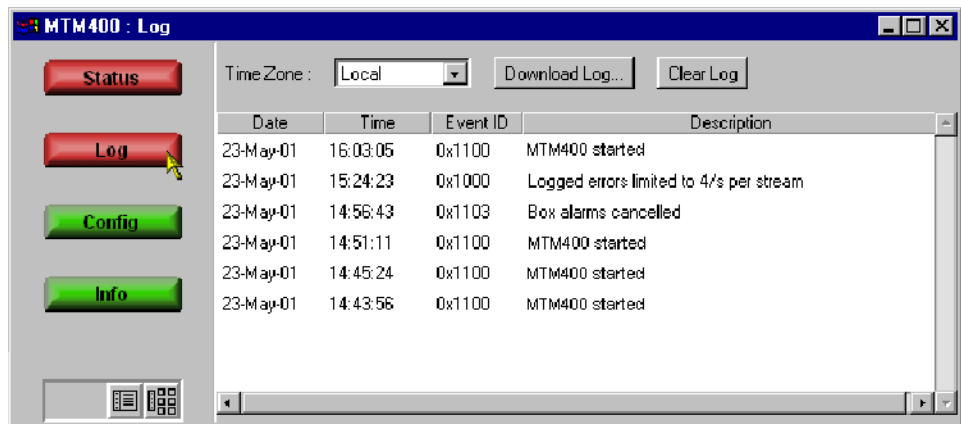
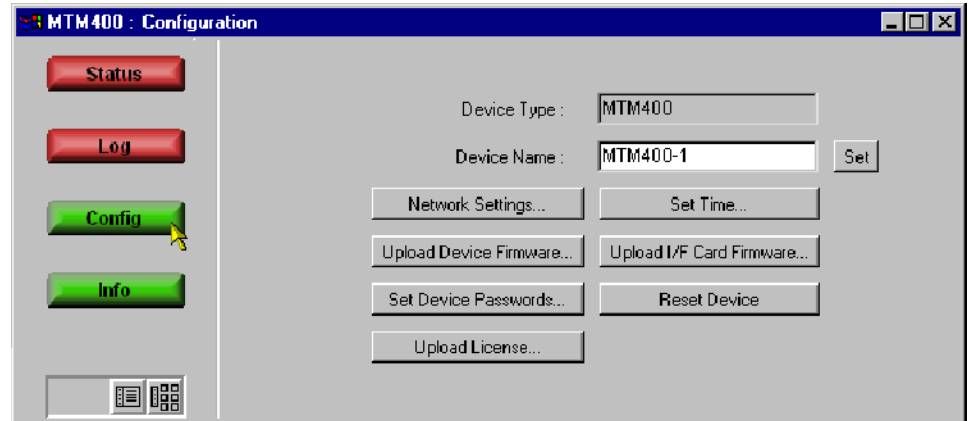


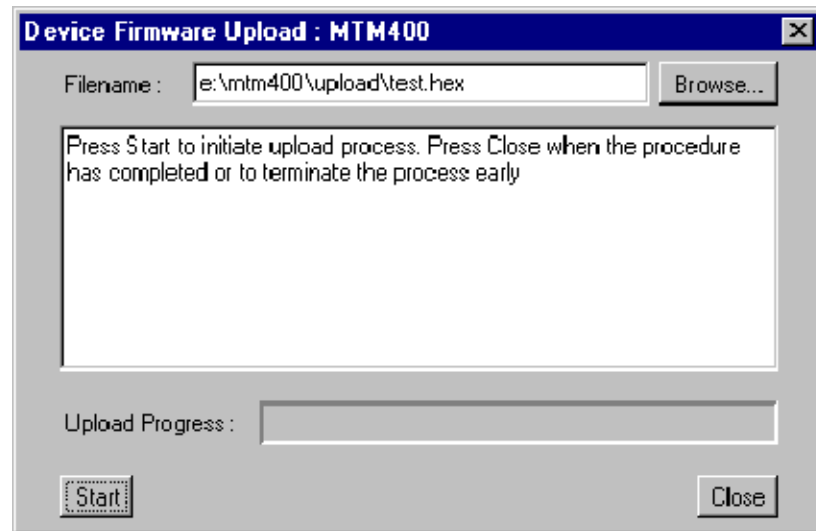
Figure 2: Device View - Log

2. In the Device View, select **Config** to display the Device Configuration screen.



**Figure 3: Device View - Configuration**

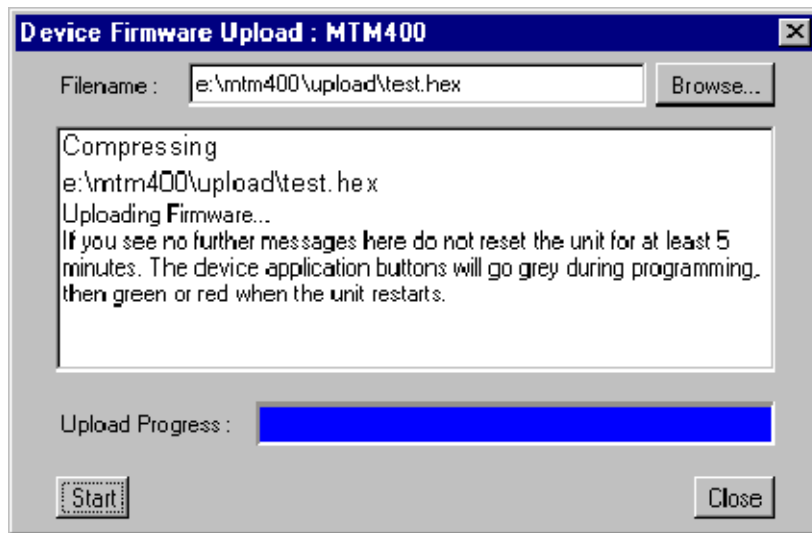
3. To upload the device firmware, select **Upload Device Firmware**.



**NOTE.** The firmware file is located on the MTM400 FW CD-ROM supplied with the kit. The firmware filename format is \*.hex. For the update to be successful, the firmware file must be copied from the CD ROM to a writable location, for example, the local hard drive.

---

4. Identify the firmware file either by entering the path and filename or by using **Browse**.
5. Select **Start** to upload the firmware.



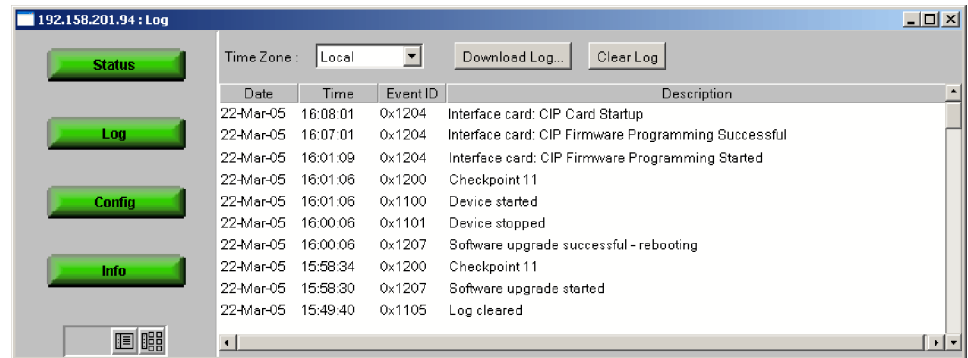
**CAUTION.** All four of the Device view buttons must be green or red before continuing.

---

6. Select **Close** when the process has completed.
7. When the MTM400 unit contains an interface card, programming of the card will start automatically as soon as the processor firmware has finished uploading.

The progress of the programming can be observed in the Device Log view. The messages shown in Figure 4 will be displayed.





**Figure 4: Device View - Log**



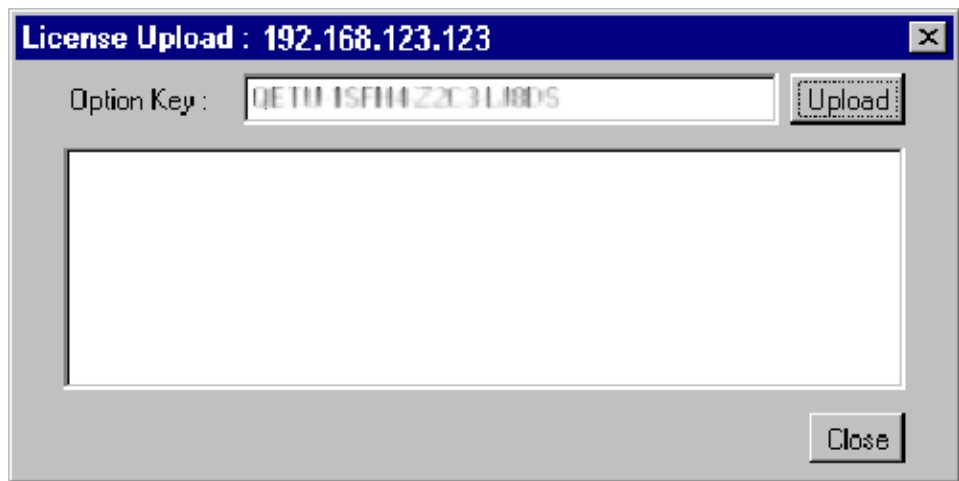
**CAUTION.** Programming the interface card can take up to ten minutes. Do not remove power from or restart the MTM400 unit during that time. If, for any reason, the process fails, programming will be automatically restarted.

8. When the “CIP Card Startup” message is displayed, the update process is complete. Close and reopen the Remote User Interface before proceeding.

## Enter and Upload New License Key

A license key is applied to the RTM device to enable functionality. When new or upgraded functions are added, for example as part of a field upgrade, you may receive a new license key with the upgrade kit. Use the License Upload dialog to apply the new license key.

1. Select **Upload License** from the Device Configuration screen.



2. Enter the new License Key. Select **Upload**. A progress message will be displayed.

The license key will be stored on the RTM device.

Licensing is specific to a single RTM device.

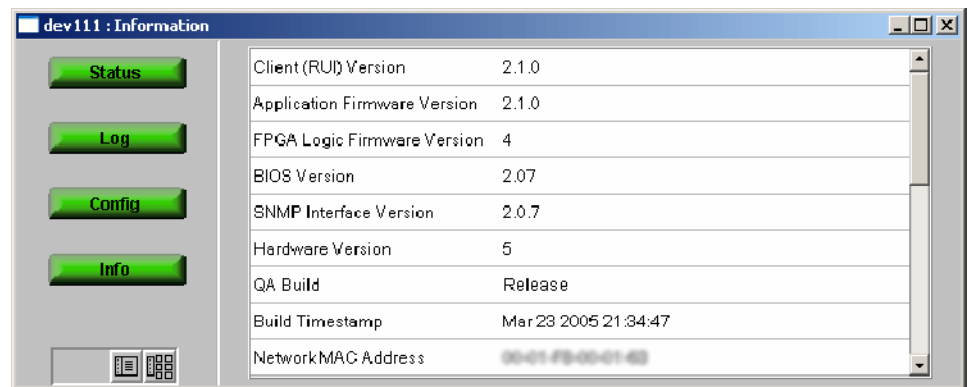
## Verifying the Firmware Upgrade

**NOTE.** *Internet Explorer must be restarted before the software version is verified.*

### Recheck the Processor Board Software Version

In the Device View, select **Info** to display the Device Information screen.

The Device Information view details the software and hardware build state of the MTM400. (The values shown in this example screenshot will differ from the values shown on your display.)



**Figure 5: Device View - Information**

The Processor Board Software value should be not less than 2.1.0.

## WebMSM Installation Instructions

If you own the WebMSM software, you must reinstall WebMSM and the WebMSM Configuration Editor as part of this upgrade. The necessary files are available on the Tektronix Web site, [www.tektronix.com](http://www.tektronix.com).

The following steps are required:

- Locate and download the WebMSM software from the Tektronix Web site.
- Uninstall WebMSM and WebMSM Configuration Editor
- Install WebMSM and WebMSM Configuration Editor

All configuration files and enabled options will be retained.

### Uninstalling WebMSM

1. At the computer containing WebMSM, run Setup for the WebMSM application.
2. Follow the onscreen instructions and remove the WebMSM application.

### Uninstalling WebMSM Configuration Editor

1. At the computer containing the WebMSM Configuration Editor, run Setup for the WebMSM Configuration Editor.
2. Follow the onscreen instructions and remove the WebMSM Configuration Editor.

### Installing WebMSM

1. Run Setup for the WebMSM application.
2. Follow the onscreen instructions and install the WebMSM application.

## Installing WebMSM Configuration Editor

1. Run Setup for the WebMSM Configuration Editor.
2. Follow the onscreen instructions and install the WebMSM Configuration Editor.

For more information regarding either WebMSM or the WebMSM Configuration Editor, refer to the Web Monitoring System Manager User Manual (Tektronix part number 071-1239-xx).

**Technical Support** If the upgrade is unsuccessful, please contact Tektronix Technical Support.

■ End of document ■

