

Instructions



WCA2UP-03 & RSA3UP-03 IQ Input Function

WCA230A & WCA280A

Portable Wireless Communication Analyzers

RSA3303A & RSA3308A

Real-Time Spectrum Analyzers

075-1268-02

Warning

The servicing instructions are for use by qualified personnel only. To avoid personal injury, do not perform any servicing unless you are qualified to do so. Refer to all safety summaries prior to performing service.

www.tektronix.com



075126802

Copyright © Tektronix. All rights reserved. Licensed software products are owned by Tektronix or its subsidiaries or suppliers, and are protected by national copyright laws and international treaty provisions.

Tektronix products are covered by U.S. and foreign patents, issued and pending. Information in this publication supercedes that in all previously published material. Specifications and price change privileges reserved.

TEKTRONIX and TEK are registered trademarks of Tektronix, Inc.

Contacting Tektronix

Tektronix, Inc.
14200 SW Karl Braun Drive
P.O. Box 500
Beaverton, OR 97077
USA

For product information, sales, service, and technical support:

- In North America, call 1-800-833-9200.
- Worldwide, visit www.tektronix.com to find contacts in your area.

Kit Description

This kit provides parts and instructions to replace the A10 A/D board and add Option 03 (IQ input function) to your WCA230A and WCA280A Portable Wireless Communication Analyzers or RSA3303A and RSA3308A Real-Time Spectrum Analyzers.

This document supports Tektronix modification ECR30645.

Products

WCA230A and WCA280A without Option 03
RSA3303A and RSA3308A without Option 03

Minimum Tool and Equipment List

Required tools and equipment	Description
Screwdriver handle	Accepts Phillips-driver bits
#1 Phillips tip	Phillips-driver bit for #1 size screw heads
#2 Phillips tip	Phillips-driver bit for #2 size screw heads

Kit Parts List

Fig. & index number	Quantity	Part number	Description
WCA2UP-03, RSA3UP-03			
1-1	1 ea	671-B158-55	CIRCUIT BD ASSY:A10
1-2	4 ea	131-6607-00	CON,RF,JACK:BNC
1-3	4 ea	174-B980-00	CABLE ASSY,RF:50OHM,COAX
1-4	8 ea	211-0871-00	SCREW,MACHINE:M3X6MM L
1-5	16 ea	211-A151-00	SCREW,MACHINE:M2.5X6MM L
1-6	1 ea	334-1377-50	MARKER, IDENT
1-7	1 ea	075-1268-02	INSTRUCTION MANUAL, WCA2UP-03 & RSA3UP-03

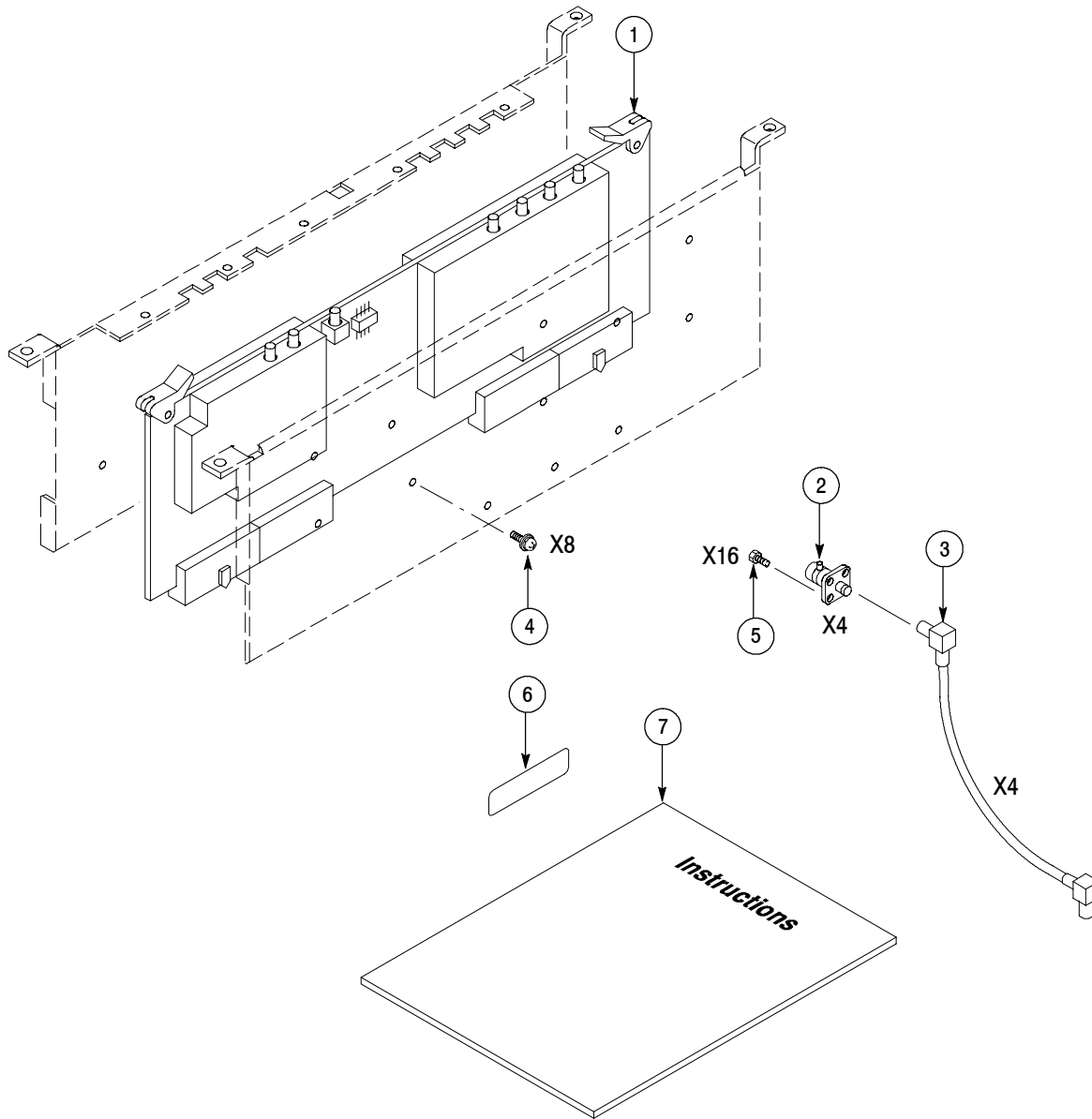


Figure 1: Kit parts

Installation Instructions

These instructions are for personnel who are familiar with servicing the product. If you need further details for disassembling or reassembling the product, refer to the *WCA230A and WCA280A Service Manual* (Tektronix part number 071-1257-00) or the *RSA3303A and RSA3308A Service Manual* (Tektronix part number 071-1412-XX).



CAUTION. *To prevent static discharge damage, service the product only in a static-free environment. Observe standard handling precautions for static-sensitive devices while installing this kit. Always wear a grounded wrist strap, grounded foot strap, and static resistant apparel while installing this kit.*

These installation instructions consist of four main processes:

- Replacing the A10 A/D board
- Installing the I and Q input connectors
- Enabling the IQ input function
- Calibrating the analyzer

Replacing the A10 A/D Board

Perform the following procedure to replace the A10 A/D board.

Removing the Cabinet

You will need a Phillips #2 screwdriver.

1. Disconnect all external cables and the power cord from the analyzer.
2. Remove the one screw securing the rear foot over the cabinet to the rear panel at each corner.
3. Remove the center two screws securing the cabinet to the rear panel.
4. Slide the cabinet backward. As you remove the cabinet, take care not to bind or snag it on the analyzer's internal cabling.

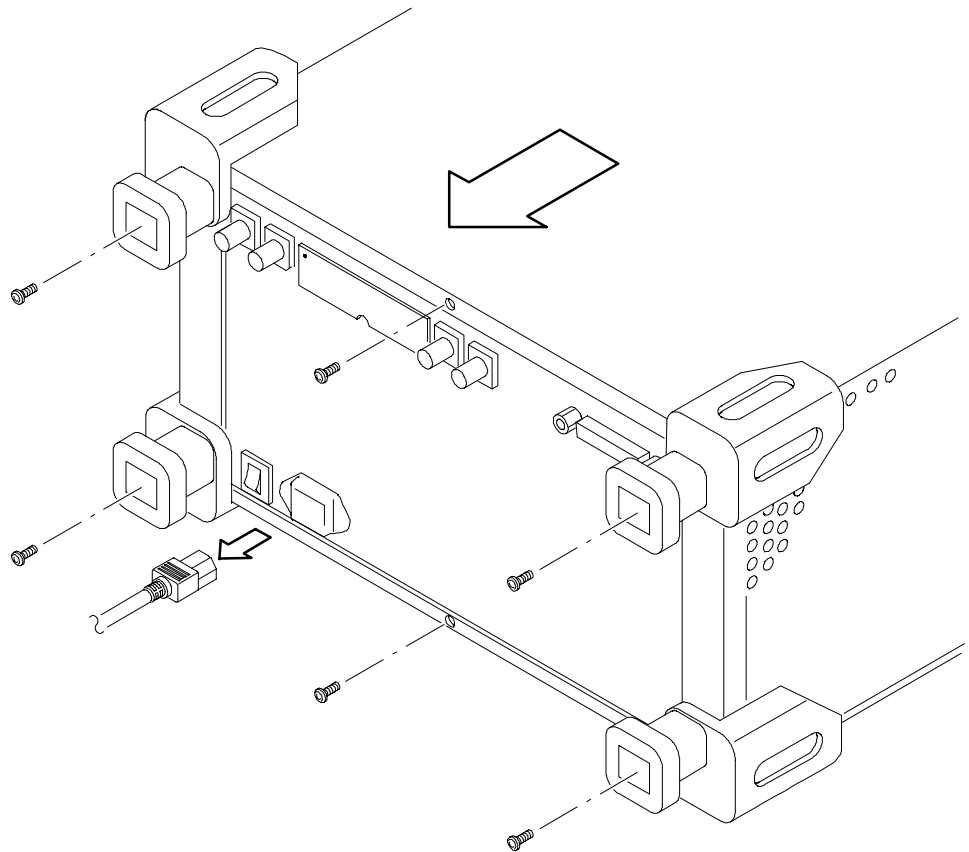


Figure 2: Cabinet removal

Removing Old A10 Board

You will need a Phillips #2 screwdriver.

1. Locate the A10 A/D board in Figure 3 (top view of the card cage).

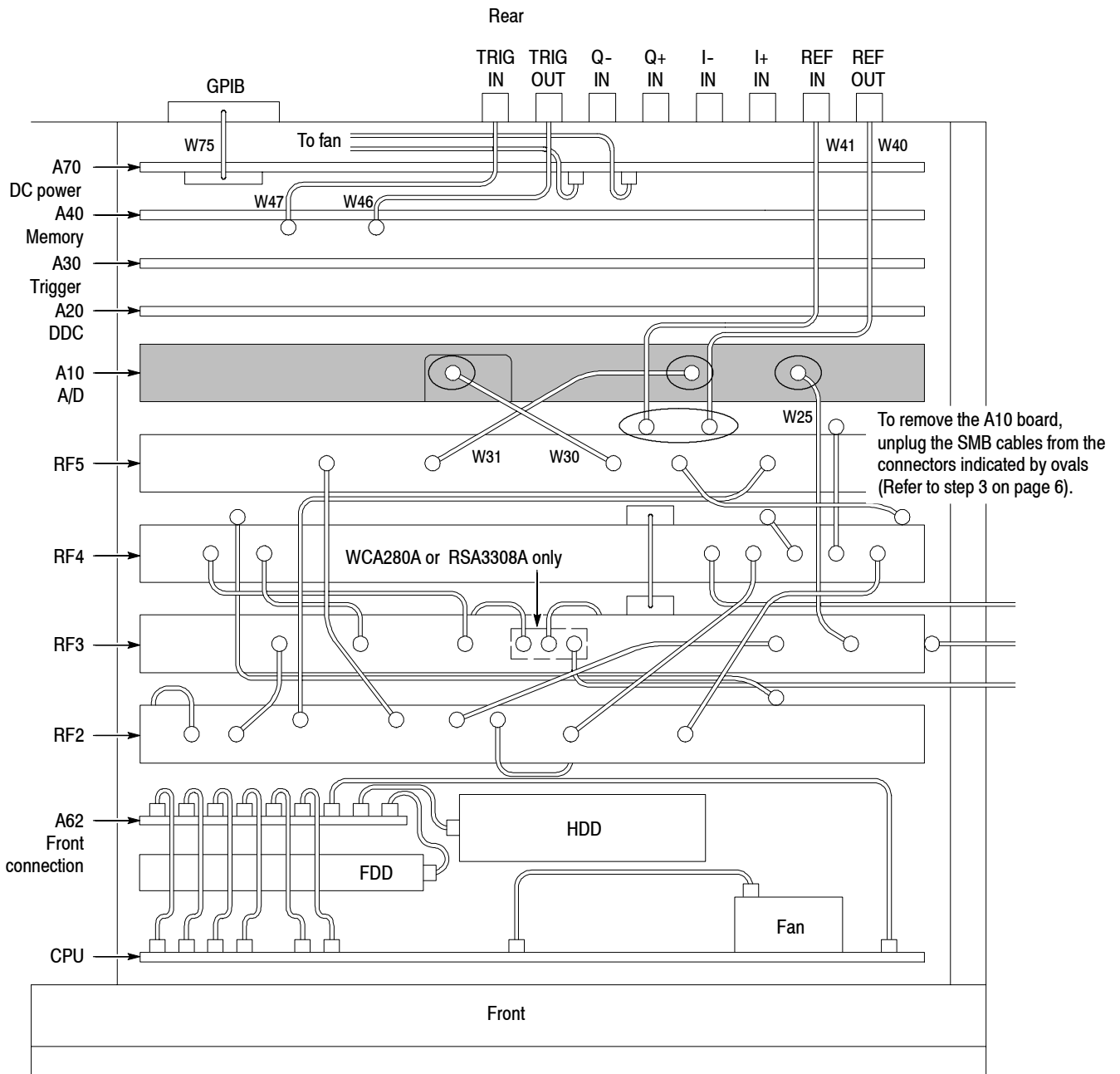


Figure 3: Top view of the card cage

2. *Remove the board support bracket:* See Figure 4 below.
Remove the two screws securing the board support bracket to the rear support bracket and the RF5 module. Lift the board support bracket away.

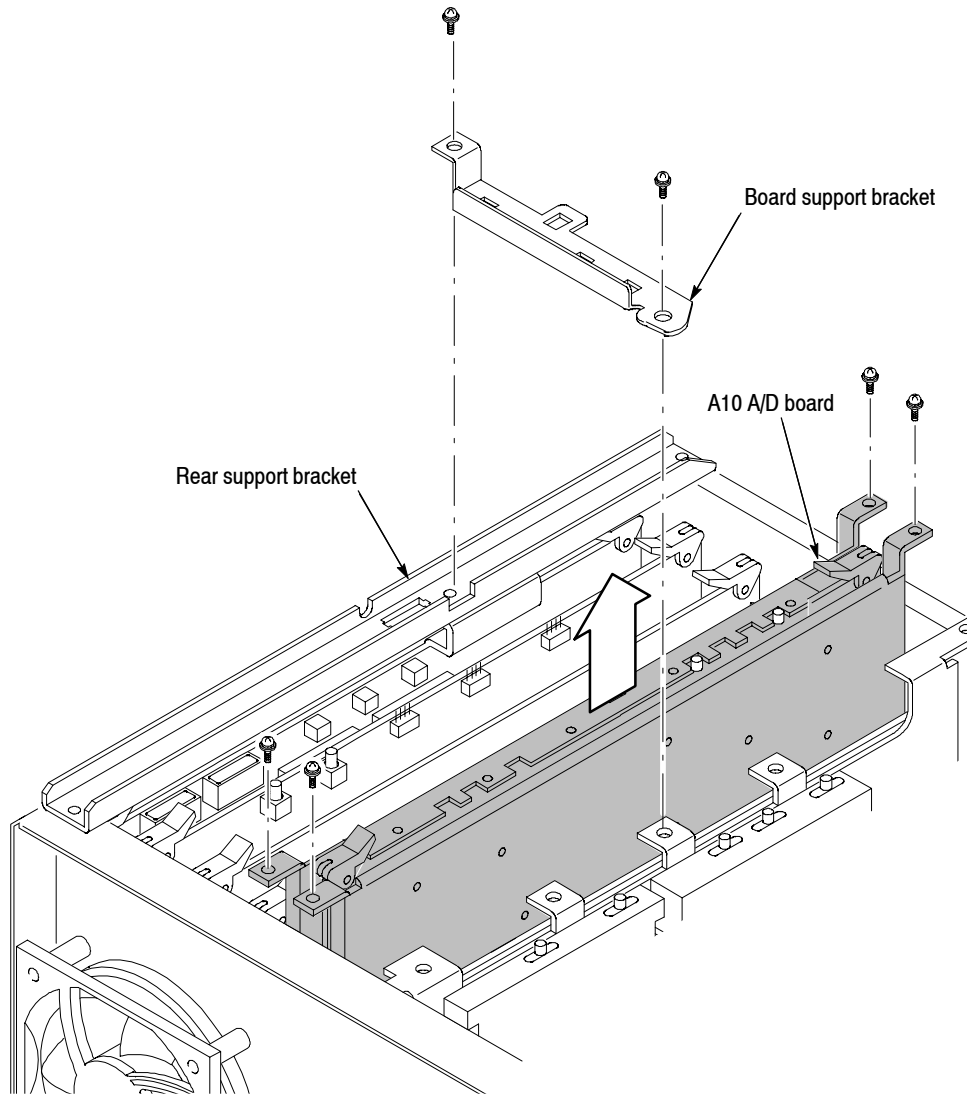


Figure 4: Removing the A10 A/D board

3. *Disconnect cables to access the A10 A/D board:* See Figure 3 on page 5.
 - a. Unplug the SMB cables W40 (RF OUT) and W41 (RF IN) from the RF5 module.
 - b. Unplug the SMB cables W30 and W31.

4. *Remove the A10 A/D board:* See Figure 4 on page 6.
 - a. Remove the two screws securing the front shield bracket to the main chassis.
 - b. Remove the two screws securing the back shield bracket to the main chassis.
 - c. Lift up the A10 board with the shield brackets from the main frame.
5. *Remove the shield brackets:* (See Figure 5 below.)
 - a. Remove the 8 screws securing the front shield bracket to the A10 board to detach the bracket.
 - b. Remove the 9 screws securing the back shield bracket to the A10 board to detach the bracket.

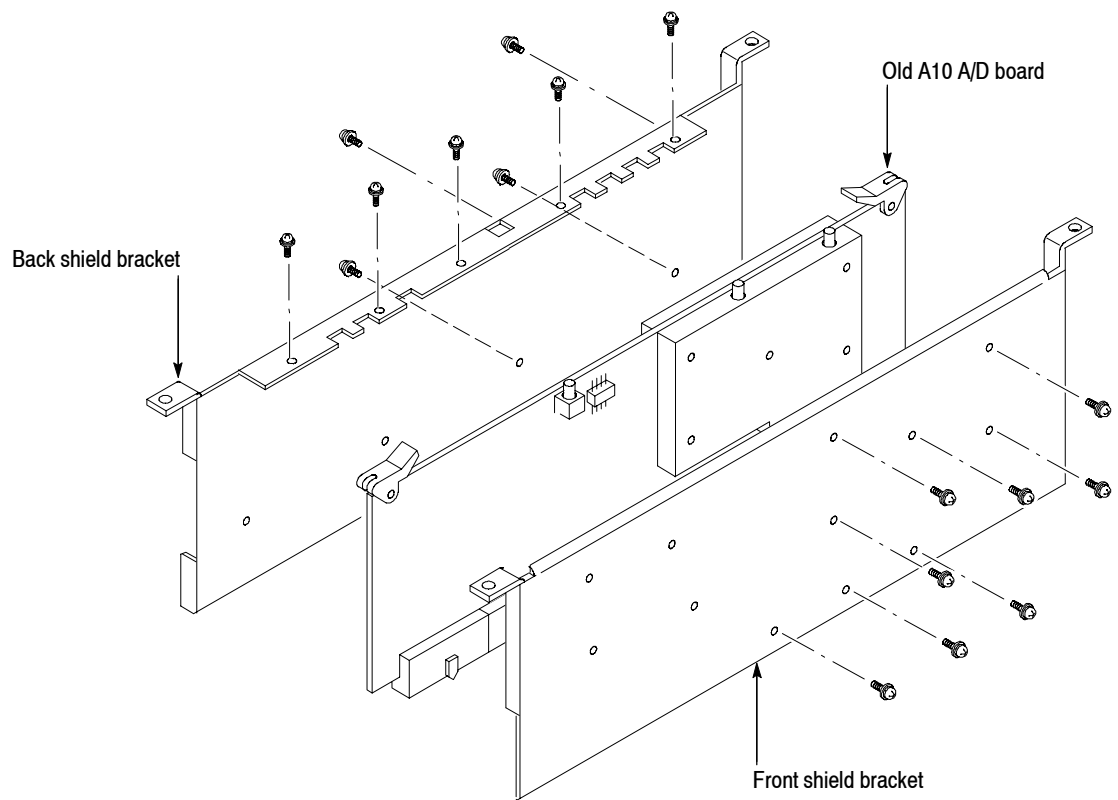


Figure 5: Detaching the shield brackets

Installing New A10 Board

You will need a Phillips #2 screwdriver.

1. *Attach the shield brackets:* See Figure 6 below.
 - a. Secure the back shield bracket to the new A10 board with 13 screws (Tektronix part number 211-0871-00; 9 were removed and 4 were included in this kit).
 - b. Secure the front shield bracket to the A10 board with 12 screws (Tektronix part number 211-0871-00; 8 were removed and 4 were included in this kit).

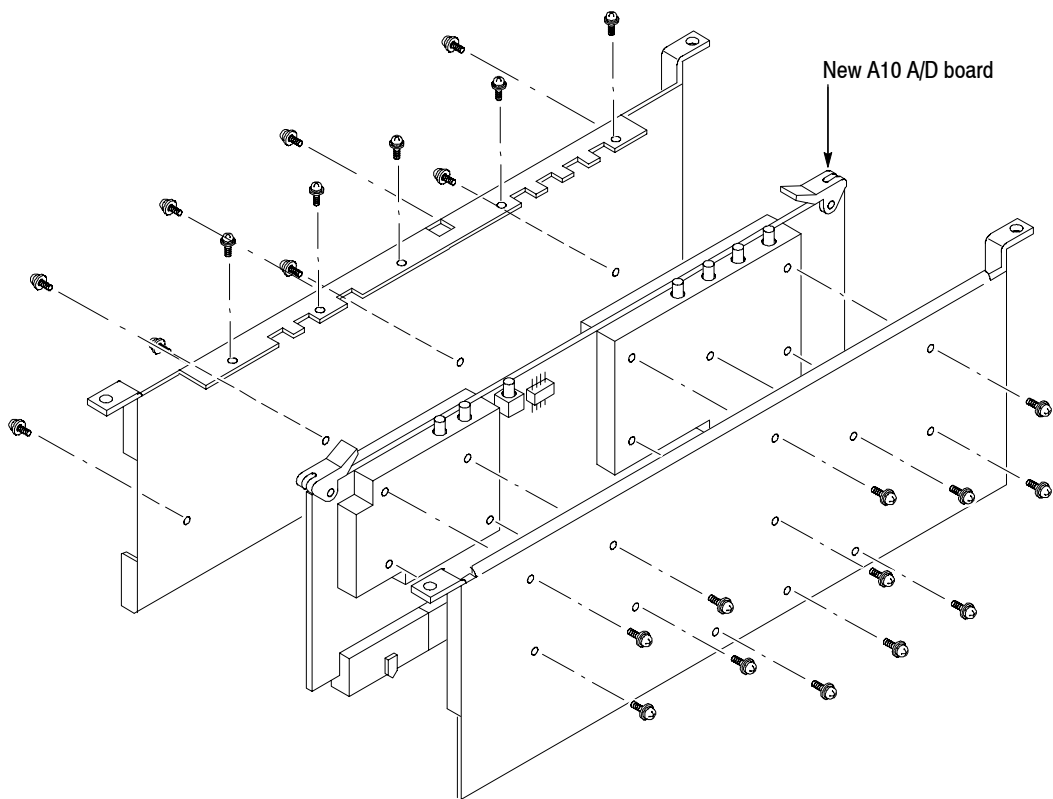


Figure 6: Attaching the shield brackets

2. Reverse step 4 on page 7 to install the new A10 board with the shield brackets to its slot.
3. Reverse step 3 on page 6 to reconnect the cables.

Installing the I and Q Input Connectors

Perform the following procedure to attach four BNC-SMB connectors on the rear panel for the I and Q input.

Attaching BNC-SMB Connectors

You will need a Phillips #1 screwdriver.

1. *Remove the blank panel:* See Figure 7 below.
Using a Phillips #1 screwdriver, remove the two screws securing the blank panel to the rear panel.

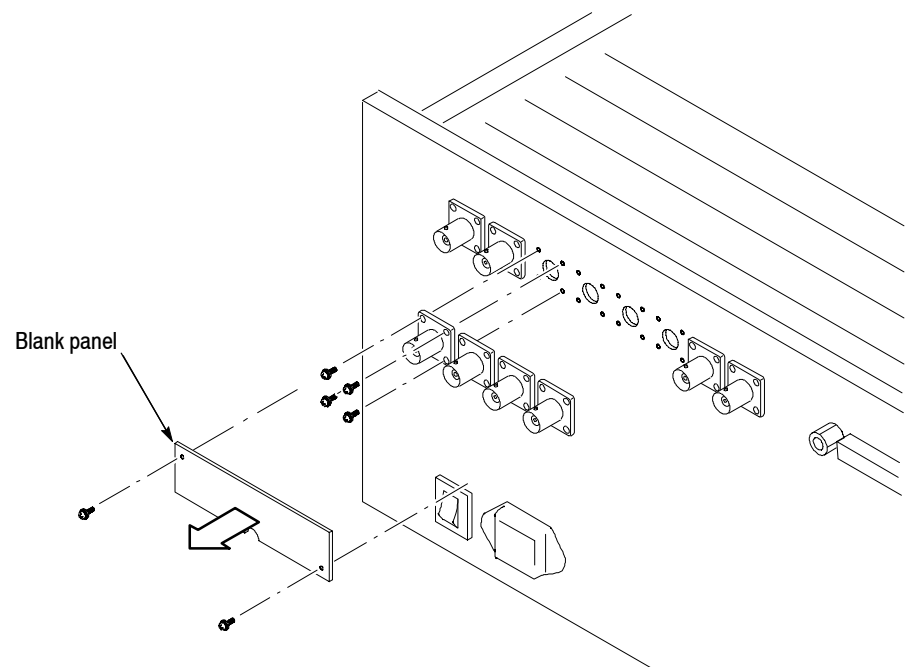


Figure 7: Installing the IQ input connectors

2. *Attach the BNC-SMB connectors:* See Figure 7.
Using a Phillips #1 screwdriver, attach the four BNC-SMB connectors (Tektronix part number 131-6607-00) with four screws (Tektronix part number 211-A151-00) each.

Connecting SMB Cables

You will need a Phillips #2 screwdriver.

1. *Remove the rear panel:* See Figure 8 below.
Using a Phillips #2 screwdriver, remove the two screws securing the rear panel to the main chassis.

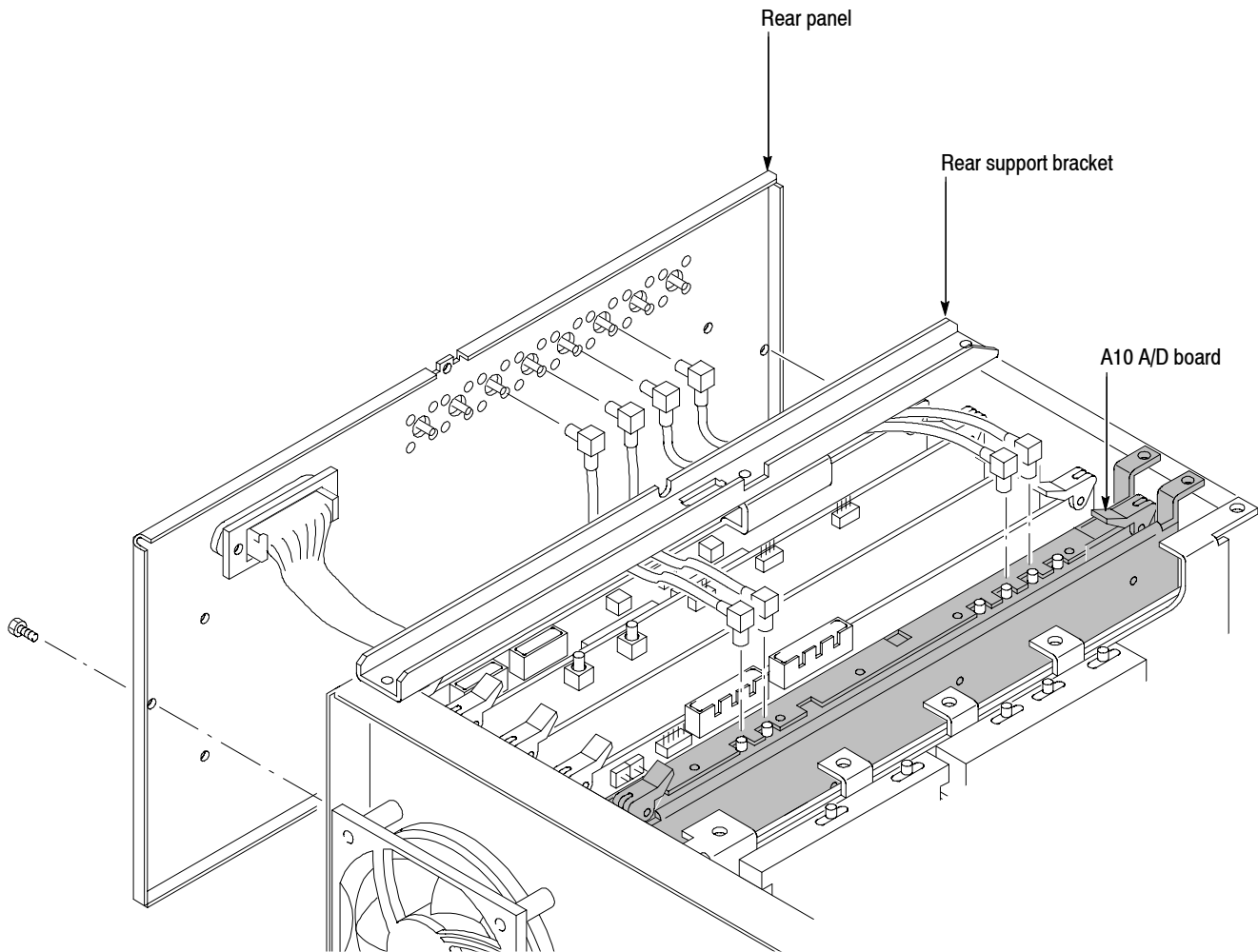


Figure 8: Connecting SMB cables

2. Move the rear panel backward gently until you can plug the SMB cables to the IQ input connectors.
3. Connect the SMB cables (Tektronix part number 174-B980-00) W42, W43, W44, and W45, as shown in Figure 9, from the connectors attached in the previous step to those on the A10 A/D board.

NOTE. Pass the cables under the rear support bracket (see Figure 8 on page 10).

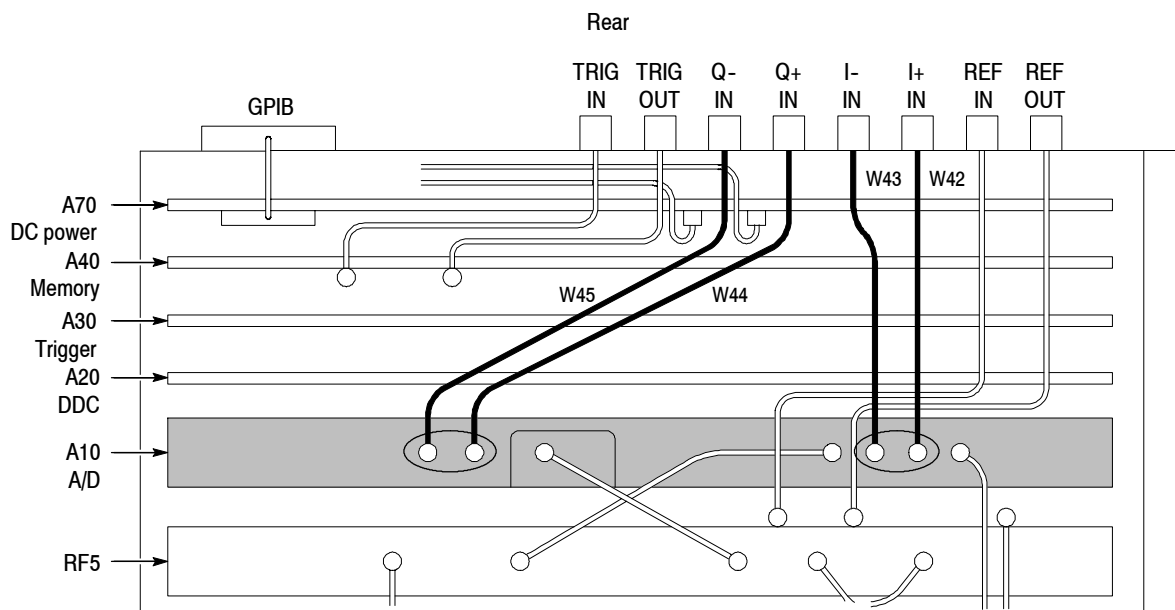


Figure 9: Connecting the IQ input (top view)

Reassembling Modules

1. Reinstall the rear panel by reversing step 1 on page 10.
2. Reinstall the board support bracket by reversing step 2 on page 6.
3. Reinstall the cabinet by reversing steps 1 through 4 on page 4.

Attaching the ID Label

After you finish the A10 A/D board and the IQ input connector installation, attach the ID label (supplied with this upgrade kit) onto the rear panel of the analyzer. Figure 10 shows the location for the label.

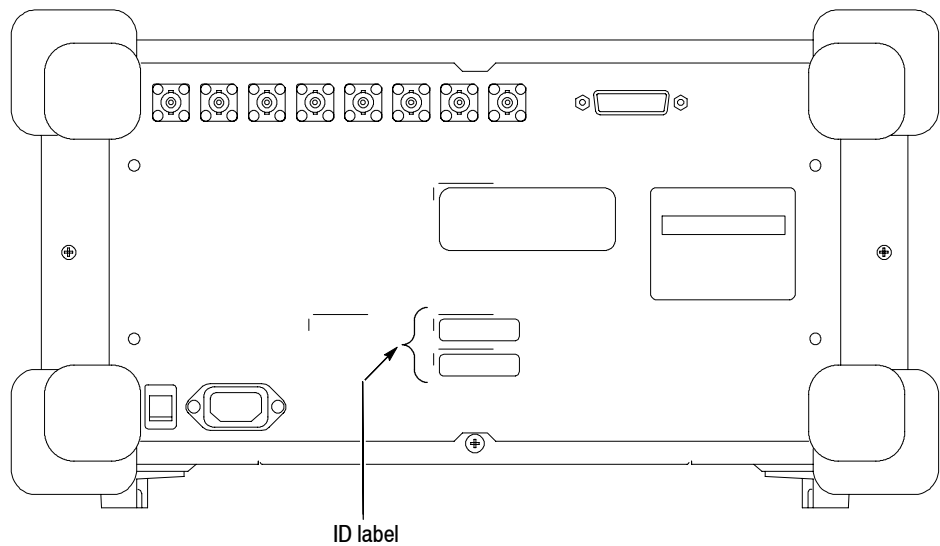


Figure 10: ID label location (rear panel)

Enabling the IQ Input Function

Edit the *Option.cal* file on the analyzer to enable the IQ input function using the following procedure.

1. Turn on the analyzer.
2. Connect a USB mouse and a USB keyboard to the USB ports on the analyzer side panel. You can connect them to either or both ports. You can also connect the mouse to the USB port on the keyboard.

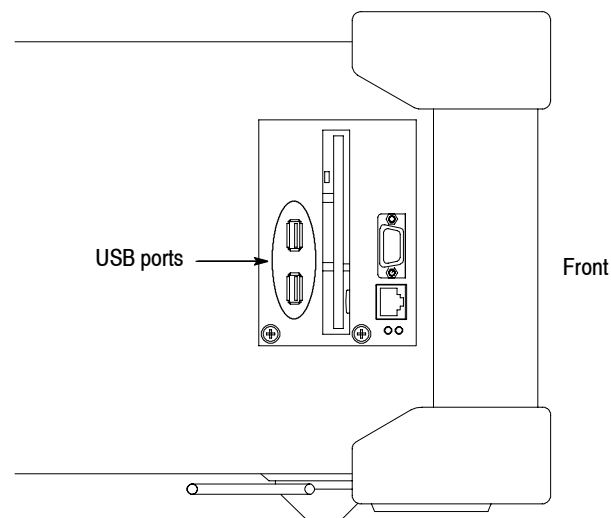
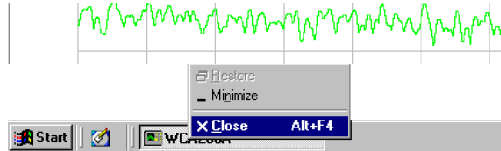


Figure 11: USB ports (side panel)

3. Display the Windows desktop on the analyzer screen:

- a.** With the mouse, move the pointer to the bottom of screen. The task bar appears.
- b.** Right-click on the task bar icon that indicates the analyzer model name (WCA230A, WCA280A, RSA3303A or RSA3308A). A menu opens.



- c.** Select **Close** from the menu.

The analyzer system program stops, and the Windows desktop displays.

4. Edit the Option.cal file:

- a.** Open the file called `D:__RtsaCalData__\Option.cal` using Windows Notepad.
- b.** Add this line just below the top line:

`Option:IQInput=On`

- c.** Add “03” to the “Option=” line as in the following examples:

Examples:

Change: “Option=” to: “Option=03”

Change: “Option=02, 1R” to: “Option=02, 1R, 03”

- d.** Save the *Option.cal* file.

5. Close all the windows on the desktop.

6. Turn off the analyzer.

Verifying Operation

1. Turn on the analyzer.
2. Press the **SYSTEM** key on the front panel.
3. Press the **Versions and Installed Options...** side key.
4. Check that Option 03 is added in the installed options list on screen (see Figure 12 below).

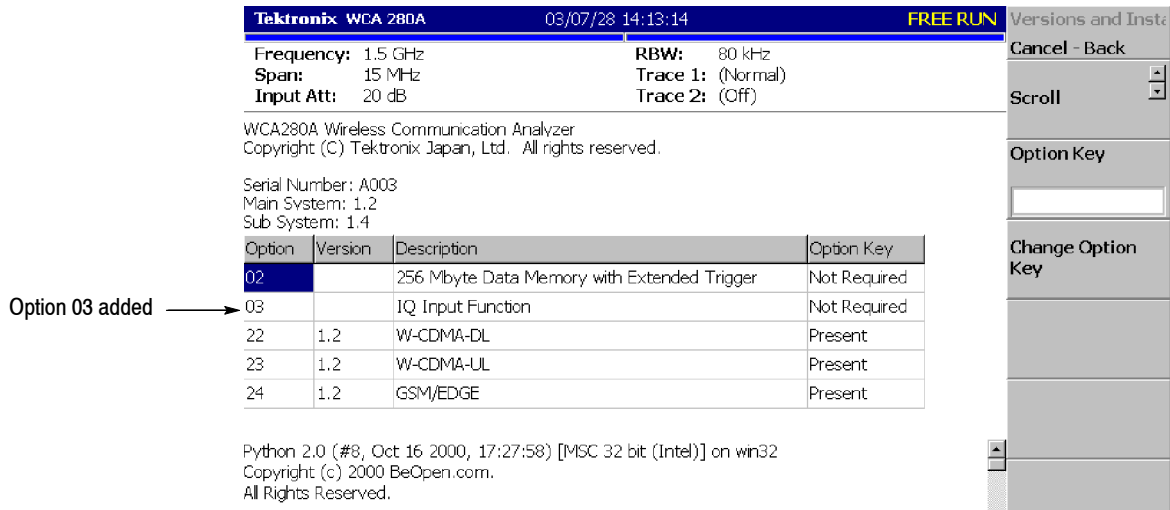


Figure 12: Checking the installed option

Calibrating the Analyzer

Perform the auto calibration, referring to *Auto Calibration* located in the *Adjustment Procedures* section of the *WCA230A and WCA280A Service Manual* (Tektronix part number 071-1257-XX) or *RSA3303A and RSA3308A Service Manual* (Tektronix part number 071-1412-XX).

NOTE. *Perform the auto calibration to meet warranted limits and optimize the performance of the analyzer.*

❏ End of document ❏