

**4 Series MSO (MSO44, MSO46)
With Option 4-SEC
Enhanced Security Instrument
Declassification and Security
Instructions**

www.tektronix.com


077-1551-00

Tektronix[®]

Copyright © Tektronix. All rights reserved. Licensed software products are owned by Tektronix or its subsidiaries or suppliers, and are protected by national copyright laws and international treaty provisions.

Tektronix products are covered by U.S. and foreign patents, issued and pending. Information in this publication supersedes that in all previously published material. Specifications and price change privileges reserved.

TEKTRONIX and TEK are registered trademarks of Tektronix, Inc.

TekSecure is a trademark of Tektronix, Inc.

Contacting Tektronix

Tektronix, Inc.
14150 SW Karl Braun Drive
P.O. Box 500
Beaverton, OR 97077
USA

For product information, sales, service, and technical support:

- In North America, call 1-800-833-9200.
- Worldwide, visit www.tek.com to find contacts in your area.

Table of Contents

Preface	iii
Supported products	iii
About the 4-SEC option.....	iv
Terms.....	v
Clear and sanitize procedures	1
Nonvolatile, volatile memory device table terminology.....	1
Memory devices	2
Media and data export devices	4
How to sanitize a working instrument.....	5
How to sanitize a nonfunctional instrument	7
Processor board removal instructions	8
Repair charges.....	14

Preface

This document helps customers with data security concerns to clear or sanitize 4 Series MSO instruments with factory-installed Option 4-SEC.

This series of instruments contain a processor system with nonremovable mass storage.

These products have data storage (memory) devices and data export interfaces (USB and Ethernet). These instructions describe how to clear or sanitize the memory devices and disable the data output interfaces. The instructions also describe how to sanitize an instrument that is not functioning.

Reference

The procedures in this document are written to meet the requirements specified in:

- National Industrial Security Program Operating Manual (NISPOM), DoD 5220.22–M, Chapter 8
- Defense Security Service Manual for the Certification and Accreditation of Classified Systems under the NISPOM

Supported products

Tektronix 4 Series Mixed Signal Oscilloscope products are covered by this document:

NOTE. *Option 4-SEC must be ordered at the same time you purchase an instrument.*

About the 4-SEC option

Option 4-SEC provides the highest level of instrument security for the products. Option features include:

- Oscilloscope hardware is configured to easily declassify the oscilloscope:
 - There is no user access to the internal storage to store or save any user data to the oscilloscope memory
 - Data can only be saved to or read from a USB port on the instrument, a mounted network drive, or through the programmatic interface
- Password protection to enable/disable external USB Host, USB Device and Ethernet communication ports
- Password protection to enable/disable firmware upgrades or downgrades
- Password protection to prevent booting from USB flash devices.

NOTE. *Option 4-SEC must be ordered at the same time you order an instrument.*

Terms

The following terms may be used in this document:

- **Clear.** This eradicates data on media/memory before reusing it in a secured area. All reusable memory is cleared to deny access to previously stored information by standard means of access.
- **Erase.** This is equivalent to clear.
- **Media.** Storage/data export device. A device that stores or exports data from the instrument, such as a USB flash drive or USB port.
- **Sanitize.** This removes the data from media/memory so that the data cannot be recovered using any known technology. This is typically used when the device is moved (temporarily or permanently) from a secured area to a nonsecured area.
- **Scrub.** This is equivalent to sanitize.
- **Remove.** This is a physical means to clear the data by removing the memory device from the instrument. Instructions are available in the product service manual.
- **User-Accessible.** The user can directly retrieve the memory device contents.
- **User-Modifiable.** The memory device can be written to by the user during normal instrument operation, using the instrument user interface or remote control.
- **Volatile memory.** Memory that loses data when the instrument is powered off.
- **Nonvolatile memory.** Memory that retains data when the instrument is powered off.
- **Power off.** Some instruments have a “Standby” mode, in which power is still supplied to the instrument. For clearing data, putting the instrument in Standby mode does not qualify as powering off. For these products, you must either push a rear-panel OFF switch or remove the power source from the instrument.
- **Instrument Declassification.** A term that refers to procedures that must be undertaken before an instrument can be removed from a secure environment. Declassification procedures include memory sanitization, memory removal, and sometimes both.

Clear and sanitize procedures

Nonvolatile, volatile memory device table terminology

The tables in this section use the following terms:

- **User data.** Describes the type of information stored in the device. Refers to waveforms or other measurement information representing signals connected to the instrument by users.
- **User settings.** Describes the type of information stored in the device. Refers to instrument settings that can be changed by the user.
- **Both.** Describes the type of information stored in the device. It means that both user data and user settings are stored in the device.
- **None.** Describes the type of information stored in the device. It means that neither user data or user settings are stored in the device.
- **Directly.** Describes how data is modified. It means that the user can modify the data.
- **Indirectly.** Describes how data is modified. It means that the instrument system resources modifies the data and that the user cannot modify the data.

Memory devices

The following tables list the volatile and nonvolatile memory devices in the instrument ¹.

Table 1: Volatile memory devices

Type and size	Function	Type of user info stored	Backed-up by battery	Method of modification	Data input method	Location	User accessible	To clear	To sanitize
SDRAM 4 GB (All models)	Host processor memory	User data	No	Indirectly	Written by processor system	Processor board	No	Unplug the instrument for at least 30 seconds	Unplug the instrument for at least 30 seconds
SDRAM MSO44: 4 GB MSO46: 8 GB	Holds active acquisition data	User data	No	Indirectly	Application software operations	Module socket (SODIMM) on the Acquisition board	No	Unplug the instrument for at least 30 seconds	Unplug the instrument for at least 30 seconds
SDRAM 512 MB	Holds video graphics data	User data	No	Indirectly	Application software operations	Acquisition board	No	Unplug the instrument for at least 30 seconds	Unplug the instrument for at least 30 seconds
CMOS RAM 7 bytes	Holds clock and boot configuration data	None	Yes	Indirectly	boot operations	Processor board	No	Cannot be cleared.	Unplug the instrument for a minimum of 30 seconds.
FPGA <30 MB	Interface between compute system and acquisition system	None	No	None	Written by processor system	Acquisition board	No	Unplug the instrument for a minimum of 30 seconds.	Unplug the instrument for a minimum of 30 seconds.

¹ These are the memory capacities at the time of publishing this document, but are subject to change.

Table 2: Nonvolatile memory devices ¹

Type and size	Function	Type of user info stored	Method of modification	Data input method	Location	User accessible	To clear	To sanitize
Primary e.MMC 32 GB	Stores Host instrument Linux operating system, application software, and instrument settings	None	Indirect	Written by processor system, software operations	Processor board	No	Not applicable, does not contain user data or settings. Clearing would disable instrument functionality.	Not applicable, does not contain user data or settings. Clearing would disable instrument functionality.
Secondary e.MMC 32 GB	Stores user data including waveforms, measurement results and instrument settings	Waveforms, measurement results, instrument settings	Direct	Application software operations and file operations	Processor board	Yes	Run TekSecure	Run TekSecure
EEPROM 2 Kbit	Stores factory data, maintenance data	None	Indirect	Factory operations	Acquisition board	Yes	Not applicable, does not contain user data or settings. Clearing would disable instrument functionality.	Not applicable, does not contain user data or settings. Clearing would disable instrument functionality.
EEPROM 1 Kb Two to four pieces depending on model	Stores the SODIMM memory configuration data (SPD)	None	None	Factory operations	Module socket (SODIMM) on acquisition board	No	Not applicable, does not contain user data or settings. Clearing would disable instrument functionality.	Not applicable, does not contain user data or settings. Sanitizing would disable instrument functionality.
Flash Memory 32 KB	Stores power management controller firmware	None	Indirect	Application software operations	Internal to the MC9S08 microcontroller on the acquisition board	No	Not applicable, does not contain user data or settings. Clearing would disable instrument functionality.	Not applicable, does not contain user data or settings. Sanitizing would disable instrument functionality.
Flash Memory 64 KB	Stores analog board microcontroller firmware	None	Indirect	Application software operations	Internal to the KL14 microcontroller on the Acquisition board	No	Not applicable, does not contain user data or settings. Clearing would disable instrument functionality.	Not applicable, does not contain user data or settings. Sanitizing would disable instrument functionality.

¹ These are the memory capacities at the time of publishing this document, but are subject to change.

Media and data export devices

The following table lists the data export devices in the instrument.

Table 3: Media and data export devices

Type	Function	Method of modification	Data input method	Location	User accessible	To disable
USB Host ports	User storage and recall of reference waveforms, screen images, and instrument setups, and installation of firmware updates using removable USB flash drives	Directly	User writeable	Three USB Host ports on front of the instrument; two USB Host ports on the back of the instrument	Yes	Use the Utility > Security menu to disable all USB ports (Host and Device). Requires a password (user-created when first disabled)
USB Device port	Remote control and data transfer to a PC	Directly	Remote control using USBTMC	USB Device port on back of the instrument	Yes	Use the Utility > Security menu to disable all USB ports (Host and Device). Requires a password (user-created when first disabled)
Ethernet	Transfer data and remote control of instrument.	Directly	Remote control using LXI, VISA, or Socket Server	Ethernet port on back of instrument	Yes	Use the Utility > Security menu to disable the Ethernet LAN port. Requires a password (user-created when first disabled)

How to sanitize a working instrument

Sanitize means that all data in nonvolatile memory is changed or overwritten such that the original data is no longer in memory, and that the data cannot be recovered using any known technology. You typically do a sanitize operation when you:

- Turn the instrument over to another person or department
- Move an instrument (temporarily or permanently) from a secured area to a nonsecured area
- Send an instrument to Tektronix for calibration and/or repair

Sanitizing is done through commands on the instrument. To sanitize the instrument:

1. Remove any USB memory devices from the instrument, and store or destroy the USB memory devices in accordance with your organization's guidelines.
2. Clear the Network Configuration password (if set):
 - a. Enter the instrument's IP address into a Web browser on a PC that has network access to the instrument.
 - b. Click the **Security for Network Config** link on the left side of the screen.
 - c. Click **Submit**:
 - If a password was set for this function, you are requested to enter the password. If the password is accepted, the password is set to blank (the default setting of the access password fields).
 - If a password was not set for this function, the screen displays the message that the password was successfully changed (to a blank password).
3. Clear the network mDNS Hostname and description:
 - a. Enter the instrument's IP address into a Web browser on a PC that has network access to the instrument.
 - b. Click the **Network Configuration** link on the left side of the screen.
 - c. Delete any existing text in both of the Host Settings fields.

- d. Click the Host Settings **Submit** button. A message appears stating that the field is empty, and will be configured to the original factory default value.
 - e. Click **OK**. The message closes and the fields are restored to their original factory settings.
4. Clear the Ethernet port settings:
 - a. Disconnect the Ethernet cable from the instrument.
 - b. Open the **Utility > I/O** menu.
 - c. Clear all information from the **Host Name**, **Domain Name**, and **Service Name** fields.
 - d. Click the Network Address **Manual** button.
 - e. Manually change the **Instrument IP Address**, **Subnet Mask**, **Gateway IP Address**, and **DNS IP Address** information to **00.00.00.00**.
 - f. Tap **Apply Changes**. It will take several moments for the changes to take effect.
 - g. Tap outside the menu to close the menu.

NOTE. *You can also clear the instrument Address settings by accessing the instrument's web-based interface. Connect the instrument to your network, enter the instrument's IP address into a Web browser on a PC that is connected to the same network as the instrument, click the **Network Configuration** link on the left side of the screen, select the **Manual TCP/IP Mode** box, clear all information from all fields, and click the **Submit** button for the Address Settings.*

5. Open the **Utility > Security** menu and clear the password used to access enabling/disabling ports and software updates. See the Help system for information on the Security menu functions.
6. Tap **TekSecure Erase Memory** to clear/reset internal memory.
7. Push the **Default Setup** button before powering off the instrument.

How to sanitize a nonfunctional instrument

Do the following to sanitize your instrument if it is not functioning and must be returned to Tektronix for repair:

1. Remove all external USB memory devices and store or destroy the USB memory devices in accordance with your organization's guidelines.
2. Follow the instructions in section (See page 8, *Processor board removal instructions*.) to get access to and remove the Processor board, which contains user data and settings. Store or destroy the Processor board in accordance with your organization's guidelines. (See page 8.)
3. Reassemble the instrument without the Processor board and return it to Tektronix. The instrument will then be repaired and calibrated as necessary.

In North America, contact the Tektronix Customer Care Center (1-800-833-9200) for assistance with returning the instrument to a repair center. Worldwide, visit www.tektronix.com to find contacts in your area.

Processor board removal instructions

Use these procedures to remove the Processor board when you need to sanitize a nonfunctional instrument before returning the instrument to Tektronix for repair. Refer to your company's internal policies regarding handling or disposal of the Processor board. A new Processor board is installed and the instrument is repaired and adjusted as necessary.



WARNING. *Before doing this procedure, disconnect the power cord from the line voltage source. Failure to do so could cause serious injury or death.*



CAUTION. *To avoid damaging other circuits in the instrument, perform the following procedure in a static-safe environment with proper electrostatic discharge controls in place.*

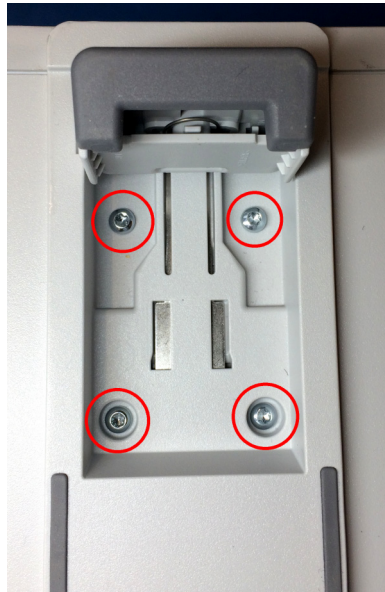


CAUTION. *Do not lay the instrument on its front while disassembling the instrument. All disassembly steps can be done with the instrument positioned as instructed in the steps. Laying the instrument on its front can damage the controls.*

Access the chassis

1. Position the instrument in the normal operating position.
2. Remove the handle from the instrument:
 - a. Use a Torx T-10 screwdriver to remove two screws from each end of the handle.
 - b. Remove the handle, external handle hubs, and screws aside.
3. Remove the metal grill from the rear of the instrument:
 - a. Use a Torx T-10 screwdriver to remove the ten (10) screws located on the grill.
 - b. Remove the grill.

4. Remove the internal handle hubs:
 - a. Use a Torx T-10 screwdriver to remove the eight (8) Torx T-10 screws from the internal hub assemblies (four screws on each hub).
 - b. Remove the internal handle hub assemblies and set aside. Keep the hub assemblies together for each side.
5. Remove the feet from the bottom of the instrument:
 - a. Position the instrument so the bottom is facing up.
 - b. Open the feet.
 - c. Use a Torx T-10 screwdriver to remove the four (4) Torx T-10 screwdriver to screws from each foot.

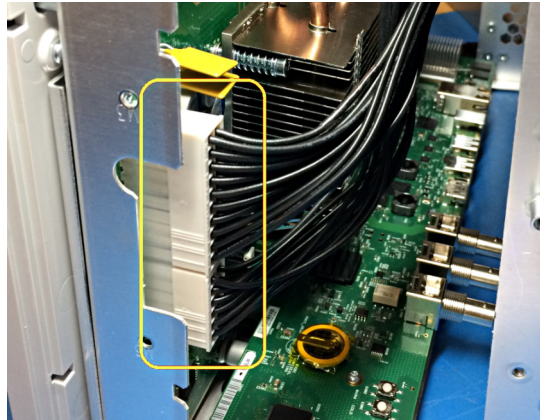


- d. Remove the feet and set aside.

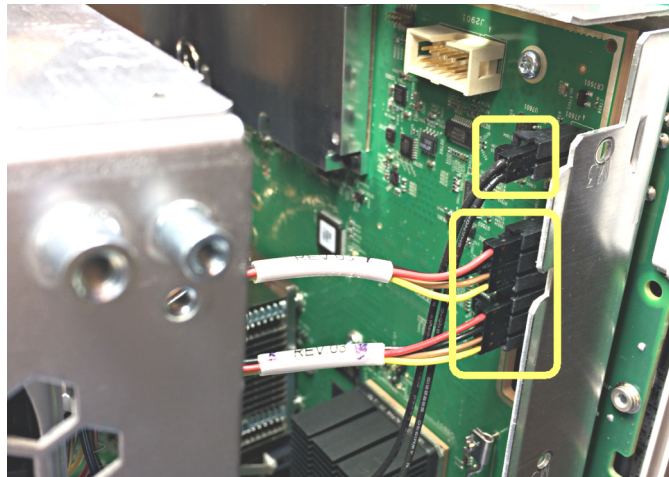
6. Remove the rear plastic case from the instrument:
 - a. Use a Torx T-10 screwdriver to remove the six (6) screws from the back of the instrument case.
 - b. Lift the rear plastic case off the back of the instrument, and set it aside.
7. Separate the rear metal chassis from the front chassis (with the instrument still in the bottom-up position):
 - a. Use a Torx T-10 screwdriver to remove the 25 screws securing the rear chassis to the front chassis. There are 24 screws around the chassis edges, and one (1) screw beneath the HDMI connector.
 - b. Remove the three (3) nuts and washers from the BNC connectors.
 - c. Gently pry apart the rear chassis assembly. The rear chassis is held in position mostly by the friction of the three BNC connectors.
 - d. Continue prying the chassis apart until you have the two halves separated and can access the cables.



- e. Disconnect the two power cable connectors.



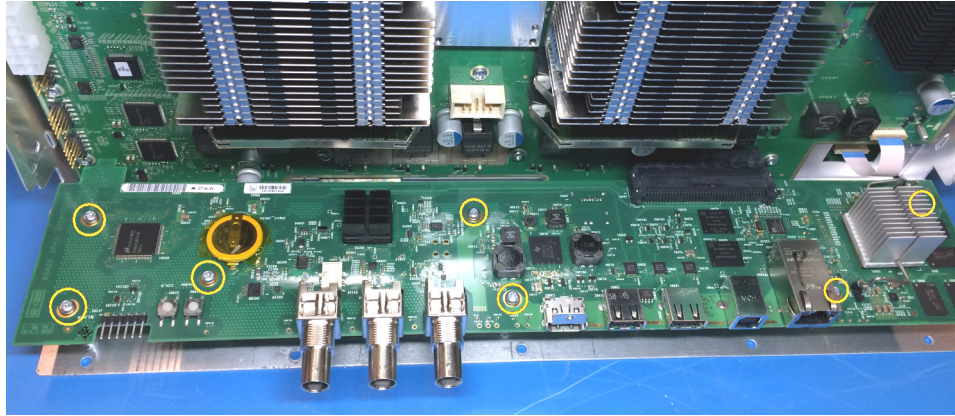
- f. Disconnect the smaller cables on the other end of the chassis.



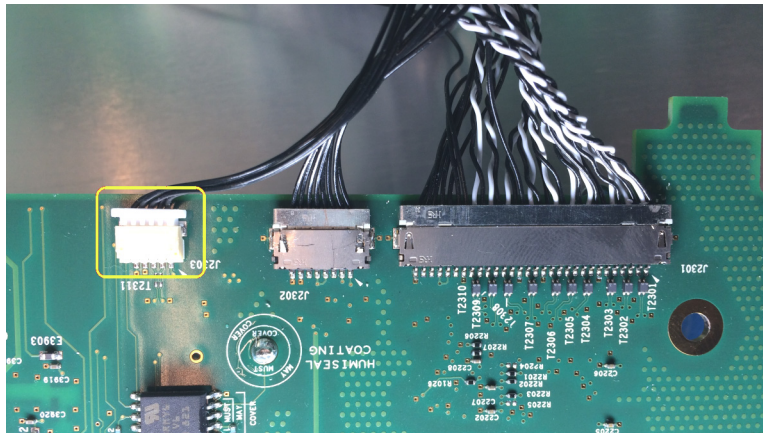
- g. Set the rear chassis aside.

Remove the Processor board

1. Use a Torx T-10 screwdriver to remove the seven (7) screws from the Processor board.



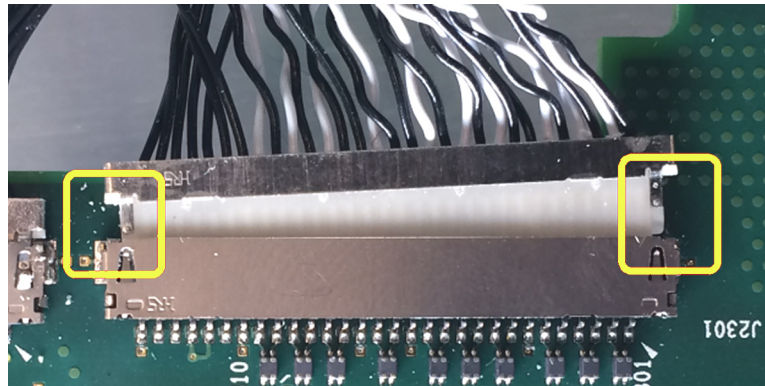
2. Lift and pull the Processor board away from the chassis. It is still connected with cables, so be careful to not pull it too far.
3. Carefully rotate the Processor board 180° counterclockwise to get access to the cable connectors.
4. Disconnect the small white plastic cable connector.



5. Position your fingernails so that they are between the edge of the larger-size cable connector and its board connector.



6. Gently push and rock the cable connector side to side to move the wire connector out of the board connector.



7. Repeat these steps to disconnect the remaining smaller cable connector.
8. Remove the Processor board. Secure or dispose of the Processor board as directed by your organization's internal policies regarding handling or disposal of secure devices.

9. Reassemble the instrument by using the disassembly steps in reverse order. Tighten the Torx T-10 screws to 0.65 Newton meters.
10. Package the reassembled instrument, minus the Processor board, and ship to your nearest Tektronix Service Center for repairs. A new Processor board will be installed

Repair charges

Replacement of damaged and missing hardware is charged according to the rate at the time of replacement.