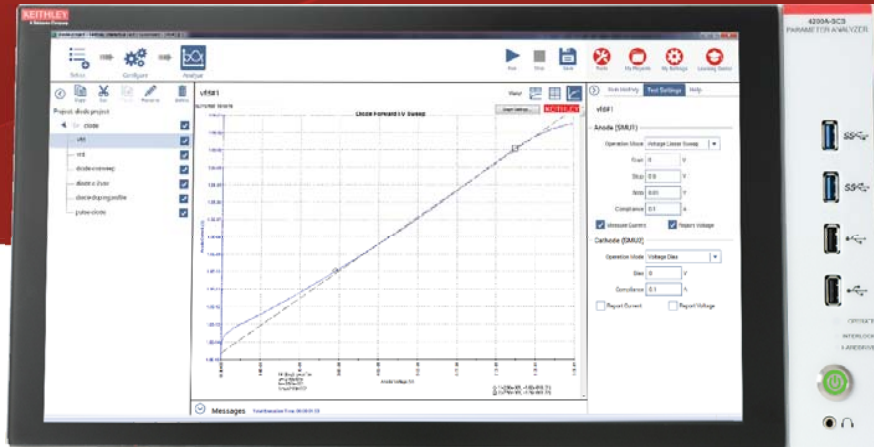


Model 4200A-SCS Parameter Analyzer Quick Start Guide



4200A-SCS

Safety precautions

The following safety precautions should be observed before using this product and any associated instrumentation. Although some instruments and accessories would normally be used with nonhazardous voltages, there are situations where hazardous conditions may be present.

This product is intended for use by qualified personnel who recognize shock hazards and are familiar with the safety precautions required to avoid possible injury. Read and follow all installation, operation, and maintenance information carefully before using the product. Refer to the user documentation for complete product specifications.

If the product is used in a manner not specified, the protection provided by the product warranty may be impaired.

The types of product users are:

Responsible body is the individual or group responsible for the use and maintenance of equipment, for ensuring that the equipment is operated within its specifications and operating limits, and for ensuring that operators are adequately trained.

Operators use the product for its intended function. They must be trained in electrical safety procedures and proper use of the instrument. They must be protected from electric shock and contact with hazardous live circuits.

Maintenance personnel perform routine procedures on the product to keep it operating properly, for example, setting the line voltage or replacing consumable materials. Maintenance procedures are described in the user documentation. The procedures explicitly state if the operator may perform them. Otherwise, they should be performed only by service personnel.

Service personnel are trained to work on live circuits, perform safe installations, and repair products. Only properly trained service personnel may perform installation and service procedures.

Keithley Instruments products are designed for use with electrical signals that are measurement, control, and data I/O connections, with low transient overvoltages, and must not be directly connected to mains voltage or to voltage sources with high transient

overvoltages. Measurement Category II (as referenced in IEC 60664) connections require protection for high transient overvoltages often associated with local AC mains connections. Certain Keithley measuring instruments may be connected to mains. These instruments will be marked as category II or higher.

Unless explicitly allowed in the specifications, operating manual, and instrument labels, do not connect any instrument to mains.

Exercise extreme caution when a shock hazard is present. Lethal voltage may be present on cable connector jacks or test fixtures. The American National Standards Institute (ANSI) states that a shock hazard exists when voltage levels greater than 30 V RMS, 42.4 V peak, or 60 VDC are present. A good safety practice is to expect that hazardous voltage is present in any unknown circuit before measuring.

Operators of this product must be protected from electric shock at all times. The responsible body must ensure that operators are prevented access and/or insulated from every connection point. In some cases, connections must be exposed to potential human contact. Product operators in these circumstances must be trained to protect themselves from the risk of electric shock. If the circuit is capable of operating at or above 1000 V, no conductive part of the circuit may be exposed.

Do not connect switching cards directly to unlimited power circuits. They are intended to be used with impedance-limited sources. NEVER connect switching cards directly to AC mains. When connecting sources to switching cards, install protective devices to limit fault current and voltage to the card.

Before operating an instrument, ensure that the line cord is connected to a properly-grounded power receptacle. Inspect the connecting cables, test leads, and jumpers for possible wear, cracks, or breaks before each use.

When installing equipment where access to the main power cord is restricted, such as rack mounting, a separate main input power disconnect device must be provided in close proximity to the equipment and within easy reach of the operator.

For maximum safety, do not touch the product, test cables, or any other instruments while power is applied to the circuit under test. ALWAYS remove power from the entire test system and discharge any capacitors before: connecting or disconnecting cables or jumpers, installing or removing switching cards, or making internal changes, such as installing or removing jumpers.

Do not touch any object that could provide a current path to the common side of the circuit under test or power line (earth) ground. Always make measurements with dry hands while standing on a dry, insulated surface capable of withstanding the voltage being measured.


When fuses are used in a product, replace with the same type and rating for continued protection against fire hazard.


For safety, instruments and accessories must be used in accordance with the operating instructions. If the instruments or accessories are used in a manner not specified in the operating instructions, the protection provided by the equipment may be impaired.


Do not exceed the maximum signal levels of the instruments and accessories. Maximum signal levels are defined in the specifications and operating information and shown on the instrument panels, test fixture panels, and switching cards.


Chassis connections must only be used as shield connections for measuring circuits, NOT as protective earth (safety ground) connections.

If you are using a test fixture, keep the lid closed while power is applied to the device under test. Safe operation requires the use of a lid interlock.


If a  screw is present, connect it to protective earth (safety ground) using the wire recommended in the user documentation.

The  symbol on an instrument means caution, risk of danger. The user must refer to the operating instructions located in the user documentation in all cases where the symbol is marked on the instrument.

The  symbol on an instrument means caution, risk of electric shock. Use standard safety precautions to avoid personal contact with these voltages.

The  symbol on an instrument shows that the surface may be hot. Avoid personal contact to prevent burns.

The  symbol indicates a connection terminal to the equipment frame.

If this  symbol is on a product, it indicates that mercury is present in the display lamp. Please note that the lamp must be properly disposed of according to federal, state, and local laws.

The **WARNING** heading in the user documentation explains dangers that might result in personal injury or death. Always read the associated information very carefully before performing the indicated procedure.

The **CAUTION** heading in the user documentation explains hazards that could damage the instrument. Such damage may invalidate the warranty.

Instrumentation and accessories shall not be connected to humans.

Before performing any maintenance, disconnect the line cord and all test cables.

To maintain protection from electric shock and fire, replacement components in mains circuits — including the power transformer, test leads, and input jacks — must be purchased from Keithley Instruments. Standard fuses with applicable national safety approvals may be used if the rating and type are the same. The detachable mains power cord provided with the instrument may only be replaced with a similarly rated power cord. Other components that are not safety-related may be purchased from other suppliers as long as they are equivalent to the original component (note that selected parts should be purchased only through Keithley Instruments to maintain accuracy and functionality of the product). If you are unsure about the applicability of a replacement component, call a Keithley Instruments office for information.

Unless otherwise noted in product-specific literature, Keithley instruments are designed to operate indoors only, in the following environment: Altitude at or below 2,000 m (6,562 ft); temperature 0 °C to 50 °C (32 °F to 122 °F) ; and pollution degree 1 or 2.

To clean an instrument, use a damp cloth or mild, water-based cleaner. Clean the exterior of the instrument only. Do not apply cleaner directly to the instrument or allow liquids to enter or spill on the instrument. Products that consist of a circuit board with no case or chassis (e.g., a data acquisition board for installation into a computer) should never require cleaning if handled according to instructions. If the board becomes contaminated and operation is affected, the board should be returned to the factory for proper cleaning/servicing.

Safety precaution revision as of March 2016.

Safety

Introduction

Connect

FAQs
Next steps

Power and environmental specifications

For indoor use only.

Power Supply	100 VAC to 240 VAC, 50 Hz to 60 Hz
Maximum VA	1000 VA
Operating altitude	Maximum 2000 m (6562 feet) above sea level
Operating temperature	10 °C to 40 °C (50 °F to 104 °F), 5 % to 80 % relative humidity, non-condensing
Storage temperature	-15 °C to 60 °C (5 °F to 140 °F), 5 % to 90 % relative humidity, non-condensing



CAUTION

Carefully consider and configure the appropriate output-off state, source levels, and compliance levels before connecting the instrument to a device that can deliver energy. Failure to consider the output-off state, source levels, and compliance levels may result in damage to the instrument or to the device under test.

Introduction

The easy-to-use Model 4200A-SCS Parameter Analyzer performs lab grade DC and pulse device characterization, real-time plotting, and analysis with high precision and sub-femtoamp resolution. The 4200A-SCS offers the most advanced capabilities available in a fully integrated characterization system, including a complete, embedded computer with a Microsoft Windows operating system and mass storage. When running a test sequence, you can view results and plots for completed tests while the sequence is still running so you can begin analyzing results sooner.

USB flash drive contents

The USB flash drive that is included with your instrument contains installation files for Clarius+. These can only be installed on the 4200A-SCS Parameter Analyzer.

For complete documentation for the 4200-SCS, see the *4200A-SCS Learning Center* .

For additional support information, see <http://www.tek.com/keithley>.

Safety

Introduction

Connect

FAQs
Next steps

Unpack and inspect the instrument

To unpack and inspect the instrument:

1. Inspect the box for damage.
2. Open the top of the box.
3. Remove the documentation, standard accessories, USB flash drive, and optional accessories (such as rack-mount hardware).
4. Remove the packaging insert.
5. Remove the 4200A-SCS.
6. Inspect the instrument for any obvious signs of physical damage. Report any damage to the shipping agent immediately.



CAUTION

The 4200A-SCS is heavy and requires a two person lift since it weighs approximately 27 kilograms (60 pounds). Do not lift the 4200A-SCS alone and do not lift the 4200A-SCS using the front bezel. Lifting the instrument by the front bezel can cause instrument damage.

You should have received the 4200A-SCS Parameter Analyzer with:

- Keyboard with integrated mouse
- Clarius+ software USB flash drive
- Power line cord
- 236-ILC-3 safety interlock cable
- 4200A-SCS Quick Start Guide (not shown; this document)

Refer to the packing list for additional items that might have shipped with your instrument.



Safety

Introduction

Connect

FAQs
Next steps

Connect the instrument

Important test system safety information

This system contains instruments that can produce hazardous voltages. It is the responsibility of the test system installer, maintenance personnel, and service personnel to make sure the system is safe during use and is operating properly. You must also realize that in many test systems a single fault, such as a software error, may output hazardous signal levels even when the system indicates that there is no hazard present. It is important that you consider the following factors in your system design and use:

- The international safety standard IEC 61010-1 defines voltages as hazardous if they exceed 30 V RMS and 42.4 V peak, or 60 VDC for equipment rated for dry locations. Keithley Instruments products are only rated for dry locations.
- Read and comply with the specifications of all instruments in the system. The overall allowed signal levels may be constrained by the lowest rated instrument in the system. For example, if you are using a 500 V power supply with a 300 VDC rated switch, the maximum allowed voltage in the system is 300 VDC.
- Make sure any test fixture connected to the system protects the operator from contact with hazardous voltages, hot surfaces, and sharp objects. Use shields, barriers, insulation, and safety interlocks to accomplish this.
- Cover the device under test (DUT) to protect the operator from flying debris in the event of a system or DUT failure.
- Double-insulate all electrical connections that an operator can touch. Double insulation ensures the operator is still protected even if one insulation layer fails. Refer to IEC 61010-1 for specific requirements.
- Make sure all connections are behind a locked cabinet door or other barrier. This protects the system operator from accidentally removing a connection by hand and exposing hazardous voltages. Use high-reliability fail-safe interlock switches to disconnect power sources when a test fixture cover is opened.
- Where possible, use automatic handlers so operators are not required to access the DUT or other potentially hazardous areas.
- Provide training to all users of the system so they understand all potential hazards and know how to protect themselves from injury.
- In many systems, during power up, the outputs may be in an unknown state until they are properly initialized. Make sure the design can tolerate this situation without causing operator injury or hardware damage.

Install the instrument

The 4200A-SCS can be used on a bench or in a rack. Please see the instructions that came with your rack-mount kit if you are installing the 4200A-SCS in a rack.

NOTE

To keep users safe, always read and follow all safety warnings provided with each of the instruments in your system.

Wiring the interlock

If you need voltages greater than ± 40 V for testing, you must add an interlock switch to the fixture. This ensures that hazardous voltages are not present when the exterior enclosure of the fixture is open. It also enables the 4200A-SCS to output higher voltages when the exterior enclosure of the fixture is closed.

When the safety interlock signal is asserted (the switch is closed and the signal is connected to +12 V), all the voltage ranges of the SMUs are functional. When the safety interlock signal is not asserted (the switch is open), the 200 V range on the SMUs is disabled, limiting the nominal output to ± 40 V.

If you need voltages greater than ± 40 V, you must also connect the exterior of the test fixture enclosure to protective earth (safety ground). Take care to ensure that the wiring (FORCE, GUARD, and SENSE) in the fixture does not electrically contact the exterior enclosure.



WARNING

The 4200A-SCS is provided with an interlock circuit that must be positively activated for the high-voltage output to be enabled. The interlock facilitates safe operation of the equipment in a test system. Bypassing the interlock could expose the operator to hazardous voltage that could result in personal injury or death.

Asserting the interlock allows the SMU and preamplifier terminals to become hazardous, exposing the user to possible electrical shock that could result in personal injury or death. SMU and preamplifier terminals should be considered hazardous even if the outputs are programmed to be low voltage. Precautions must be taken to prevent a shock hazard by surrounding the test device and any unprotected leads (wiring) with double insulation for 250 V, Category 0.

Safety

Introduction

Connect

FAQs
Next steps

There are low-voltage and high-voltage test fixtures for the 4200A-SCS. Low-voltage fixtures, such as the Keithley Instruments 8101-PIV, are intended for applications that are less than ± 40 V. For these applications, an interlock is not needed.

High-voltage test fixtures, such as the Keithley Instruments LR:8028, can be used with applications that are greater than ± 40 V. The test fixture has a safety interlock switch connected to its lid. When the lid is closed, the interlock circuit is closed (asserted), and SMU ± 200 V ranges are enabled.

Conversely, the interlock circuit is open (de-asserted) when the lid is open, and the SMU ± 200 V ranges are disabled. High-voltage test fixtures require extra precaution to ensure there are no shock hazards.

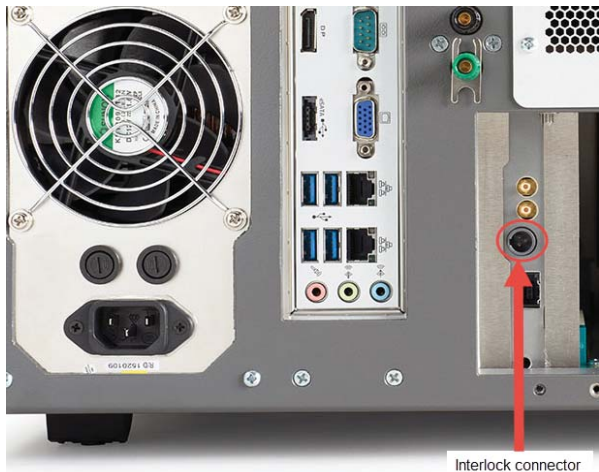
For correct operation with the 4200A-SCS, the test fixture should have a normally open switch that is used for the interlock. An open interlock condition occurs when the switch is open.

NOTE

The 4200A-SCS functions on all current ranges and up to ± 40 V without asserting the interlock. When the interlock is not asserted, the maximum voltage on the SMU and preamplifier terminals is not hazardous.

To connect the interlock cable:

1. Connect one end of the supplied interlock cable (part number 236-ILC-3) to the rear panel of the 4200A-SCS. The location of the rear panel interlock connector is shown in the following graphic.



2. Connect the other end of the connector to the test fixture.

Test connections

If you are testing discrete devices, you need a test fixture that is equipped with 3-lug triaxial connectors. The 8101-PIV test fixture, which can be purchased from Keithley Instruments, allows the 4200A-SCS to be connected to a discrete device.

For connections to a probe station for wafer testing, see the [4200A-SCS Learning Center](#) .

Safety

Introduction

Connect

FAQs
Next steps

Power on the 4200A-SCS

The 4200A-SCS operates from a line voltage of 100 V to 240 V at a frequency of 50 Hz or 60 Hz. Make sure the operating voltage in your area is compatible.



CAUTION

Operating the instrument on an incorrect line voltage may cause damage to the instrument, possibly voiding the warranty.



WARNING

The power cord supplied with the Model 4200A-SCS contains a separate protective earth (safety ground) wire for use with grounded outlets. When proper connections are made, the instrument chassis is connected to power-line ground through the ground wire in the power cord. In addition, a redundant protective earth connection is provided through a screw on the rear panel. This terminal should be connected to a known protective earth. In the event of a failure, not using a properly grounded protective earth and grounded outlet may result in personal injury or death due to electric shock.

Do not replace detachable mains supply cords with inadequately rated cords. Failure to use properly rated cords may result in personal injury or death due to electric shock.



To power on the 4200A-SCS:

1. Make sure the power is off. The power switch, on the front panel in the lower right corner, is not lit when power is off.
2. Plug the male end of the line cord into a properly grounded AC line power receptacle.
3. Turn on the 4200A-SCS by pushing the power switch to the lit position.

The instrument starts up.



NOTE

When first starting a Clarius+ application, you must answer "Yes" to an on-screen license agreement. Answering "No" makes your system nonfunctional until you reinstall the software.

Safety

Introduction

Connect


FAQs
Next steps

Change powerline frequency

NOTE

The default powerline frequency is set to 60 Hz. If the setting is wrong, the 4200A-SCS cannot properly reject powerline measurement noise.

To change the powerline frequency:

1. Close Clarius.
2. Run KCon.
3. Select **KI 4200A SCS** in the Configuration Navigator. The left pane is the Configuration Navigator.
4. Change the Powerline Frequency as needed.
5. Select **Save** .

Keithley Configuration Utility

Clarius Version V1.0

KI System Configuration

Validate Configuration Update PreAmp, RPM, and CVW Configuration Save System Configuration Summary KIC1 Settings Tools Learning Center

Slot	Instrument
SMU1	Keithley 4210 HPSMU
SMU2	Keithley 4200 MPSMU
SMU3	Keithley 4210 HPSMU
CVU1	Keithley 4210 CVU
PMU1	Keithley 4225 PMU
GNDU	Keithley 4200 Ground Unit

KI 4200A SCS Properties

Model: Keithley 4200 Semiconductor Characterization System

System Serial Number: 1234567

Platform/Version: 4200-300-3D

System Serial Number: 4200-852-9.0-803

KTE Interactive Version:

Powerline Frequency: 60 Hz

SMU AutoRange Method: Normal

SMU Standby Range: 10mA

Instruments Cards

Slot 1: Keithley 4210 HPSMU

Slot 2: Keithley 4200 MPSMU

Slot 3: Keithley 4210 HPSMU

Slot 4: Empty

Slot 5: Empty

Slot 6: Empty

Slot 7: Keithley 4210 CVU

Slot 8: Empty

Slot 9: Keithley 4225 PMU

Slot 10: Empty

Add External Instrument Remove External Instrument

Safety

Introduction

Connect

FAQs
Next steps

FAQs

How should I clean the front-panel display?

If you need to clean the front-panel LCD touchscreen display, use a soft dry cloth. If necessary, use a cloth dampened with an ammonia-free glass cleaner. Do not spray cleaning fluids onto the display. Additionally, it is strongly recommended that you use only fingers on the touchscreen. Do not use sharp objects, such as a pen or pencil, to touch the touchscreen.

My data looks odd or is wrong. What should I do?

Verify the connections from the instrument to the test fixture. Also check the connections from the DUT to the test fixture socket.

I cannot unplug the mini-triaxial cable (4200A-MTRX) from the SMU. What should I do?

The mini-triaxial connector is a locking connector. To remove it, pull the knurled part of the connector back.

A configuration error has been detected and I cannot launch Clarius. What should I do?

This occurs when the physical configuration does not match the KCon defined configuration or when there are communication problems between instruments and the 4200A-SCS.

To verify system configuration:

1. Run KCon.
2. Select **Validate Configuration**.


This can also occur if the preamplifier or RPM is removed or reconnected.

To update the system configuration:

1. Run KCon.
2. Select **Upgrade Preamp, RPM, and CVIV Configuration**.

Note that preamplifiers are SMU specific. For example, a preamplifier that is configured for SMU1 cannot be connected to SMU2.

Next steps

See the *4200A-SCS Learning Center*  , which is preinstalled on your system. To access the Learning Center, click **Help** in the Clarius menu, press F1 while using Clarius, or select the desktop icon.

The 4200A-SCS Learning Center includes the following:

- **Instructional videos and text:** Contains basic and detailed information about using the system that will help you with the instrument.
- **4200A-SCS User Manual:** Contains basic information about using the system, plus application-based examples that will help familiarize you with the instrument.
- **4200A-SCS Reference Manual:** Provides detailed information about all features of the instrument.
- **Application notes:** Detailed applications that demonstrate specific applications.

- **Data sheets:** Technical data regarding the 4200A-SCS and related accessories.

See: www.tek.com/keithley for support and additional information about the instrument.

Safety

Introduction

Connect

FAQs
Next steps

Contact Information:

Australia* 1 800 709 465
Austria 00800 2255 4835
Balkans, Israel, South Africa and other ISE Countries +41 52 675 3777
Belgium* 00800 2255 4835
Brazil +55 (11) 3759 7627
Canada 1 800 833 9200
Central East Europe / Baltics +41 52 675 3777
Central Europe / Greece +41 52 675 3777
Denmark +45 80 88 1401
Finland +41 52 675 3777
France* 00800 2255 4835
Germany* 00800 2255 4835
Hong Kong 400 820 5835
India 000 800 650 1835
Indonesia 007 803 601 5249
Italy 00800 2255 4835
Japan 81 (3) 6714 3010
Luxembourg +41 52 675 3777
Malaysia 1 800 22 55835
Mexico, Central/South America and Caribbean 52 (55) 56 04 50 90
Middle East, Asia, and North Africa +41 52 675 3777
The Netherlands* 00800 2255 4835
New Zealand 0800 800 238
Norway 800 16098
People's Republic of China 400 820 5835
Philippines 1 800 1601 0077
Poland +41 52 675 3777
Portugal 80 08 12370
Republic of Korea +82 2 6917 5000
Russia / CIS +7 (495) 6647564
Singapore 800 6011 473
South Africa +41 52 675 3777
Spain* 00800 2255 4835
Sweden* 00800 2255 4835
Switzerland* 00800 2255 4835
Taiwan 886 (2) 2656 6688
Thailand 1 800 011 931
United Kingdom / Ireland* 00800 2255 4835
USA 1 800 833 9200
Vietnam 12060128

Find more valuable resources at TEK.COM

Copyright © 2016, Tektronix. All rights reserved. Tektronix products are covered by U.S. and foreign patents, issued and pending. Information in this publication supersedes that in all previously published material. Specification and price change privileges reserved. TEKTRONIX and TEK are registered trademarks of Tektronix, Inc. All other trade names referenced are the service marks, trademarks or registered trademarks of their respective companies.

* European toll-free number.
If not accessible, call: +41 52 675 3777



KEITHLEY
A Tektronix Company

4200A-903-01 Rev. A / September 2016

