

RE-INVENTING TEST & MEASUREMENT THROUGH *SPEED* AND *SIMPLICITY*

KickStart



Guide



KEITHLEY
A Tektronix Company

Safety precautions

Before using this product, see the safety precautions associated with your instrument. The instrumentation associated with this software is intended for use by personnel who recognize shock hazards and are familiar with the instrument safety precautions to avoid possible injury or death. Read and follow all installation, operation, and maintenance information carefully before using any instrument.

Refer to the instrument user documentation for complete product specifications. If the product is used in a manner not specified, the protection provided by the product warranty may be impaired.

Safety precaution revision as of January 2018.

KickStart software

KickStart allows you to create apps, manipulate settings, and view and export previous runs without a license. However, to run an app or communicate with and control an instrument, KickStart software requires a license. You can launch a one-time 60-day trial for the KickStart Apps.

Go to tek.com/keithley-kickstart and you will see information about the software. On this page you can also download free trial software and buy or request a quote. Once you purchase KickStart you will have access to all of the base KickStart apps with a floating license. A floating license allows you to manage the transfer of individual license files to different computers.

Manage licenses

You can maintain your licenses from within KickStart. The KickStart software license provides access to KickStart applications and features. A license is activated either by purchasing the software or through a trial. A trial will allow you to use full functionality for a limited period of time.

To install or remove a license, select the key icon  .


You can also view previously entered licenses and the dates and times for when the licenses were entered and checked out and when they expire.

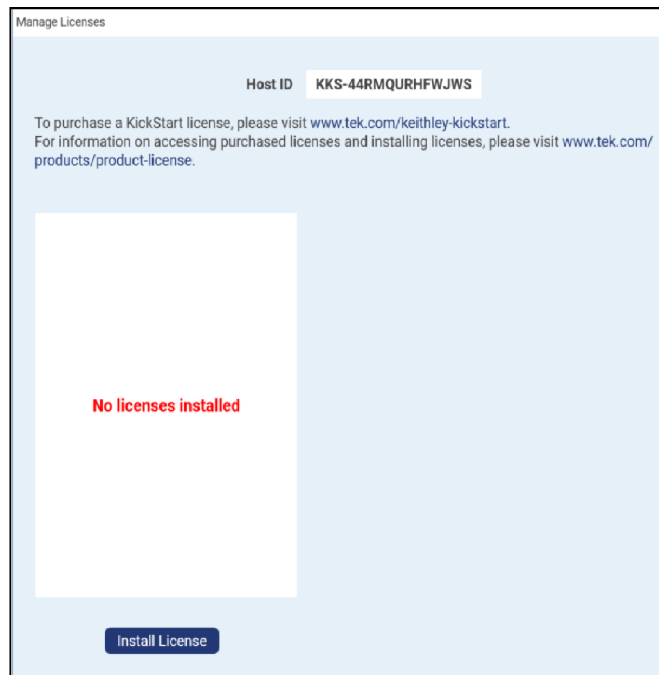
Each license entitles you to unlimited support by Tektronix worldwide technical support centers and field applications engineers.

Install a license

KickStart software licenses are managed using the Tektronix Asset Management System (TekAMS). Each KickStart license is valid for a single computer at a time. Use TekAMS to check out the license for your computer so that you can move the license to a different computer. That process is described on the next page. The email address of the primary user or administrator who manages the license is the license key manager. Key managers are authorized to add users who can then access these licenses and assign them to specific instruments and computers. For more information on TekAMS, see tek.com/products/product-license.

To generate a license file, you must submit your **Host ID** to TekAMS. The **Host ID** is located at the top of the **Manage Licenses** window.

Download the license file from TekAMS and transfer it to the computer that will run KickStart software. Open KickStart software and select the key icon . Using the **Manage Licenses** window, select **Install License** and browse to the downloaded license file. After the license is entered, the license and its details are viewable.



Maintenance and Checkout defined

Maintenance:

Indicates the date your license will expire and when your license is eligible for updates. Once the current license expires, you will not be able to receive future updates.

Checkout:

Indicates the date the checkout will expire and when the license for your specific PC will expire. When you generate your license file in TekAMS, you can set the checkout time. Once checkout expires, you will need to check out another license file in TekAMS. If you need to move the license to a different PC, select **Remove License** to remove it from this PC. Next, check the license into TekAMS, then generate a new license file in TekAMS for the new PC.

Manage Licenses

Host ID KKS-PQ55HPFJR8MHE

To purchase a KickStart license, please visit www.tek.com/keithley-kickstart.
For information on accessing purchased licenses and installing licenses, please visit www.tek.com/products/product-license.

High Resistivity

KickStart Suite

Maintenance

Expires on 10/13/2021

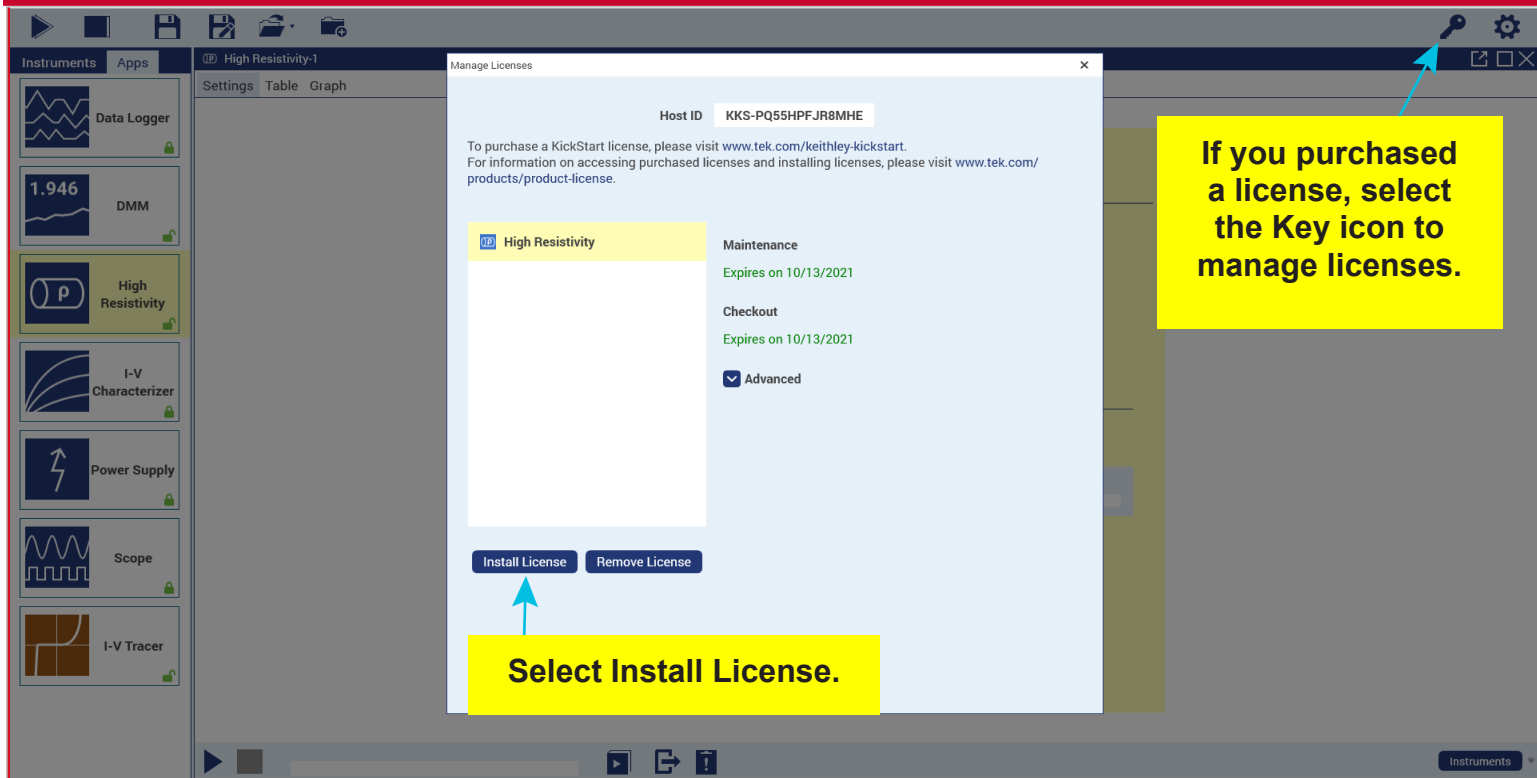
Checkout

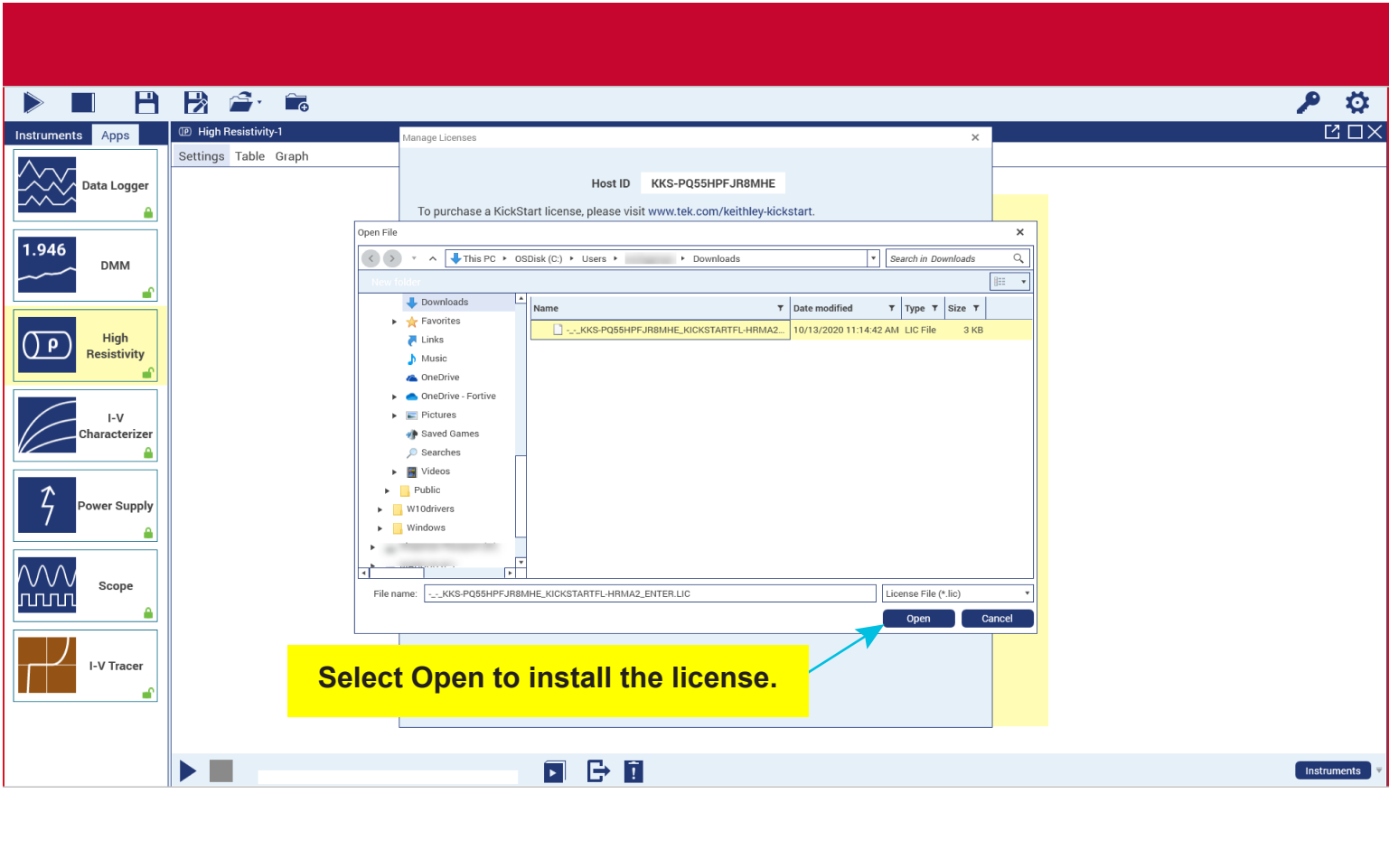
Expires on 10/13/2021

☒ Advanced

Install License

Remove License





High Resistivity-1

Settings Table Graph

Manage Licenses

Host ID KKS-PQ55HPFJR8MHE

To purchase a KickStart license, please visit www.tek.com/keithley-kickstart.

Open File

This PC > OSDisk (C:) > Users > > Downloads

Search in Downloads

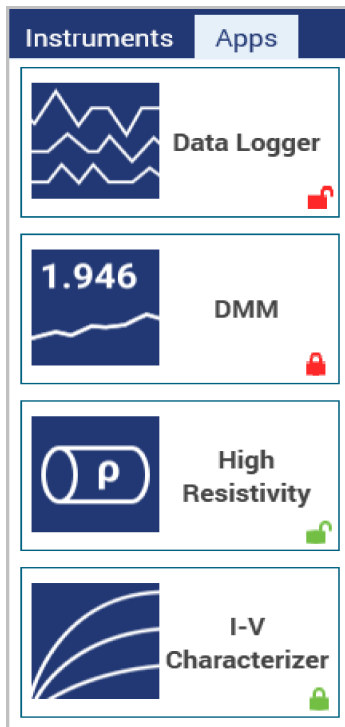
Name	Date modified	Type	Size
~_KKS-PQ55HPFJR8MHE_KICKSTARTFL-HRMA2_...	10/13/2020 11:14:42 AM	LIC File	3 KB

File name: ~_KKS-PQ55HPFJR8MHE_KICKSTARTFL-HRMA2_ENTER.LIC

License File (*.lic)

Open Cancel

Select Open to install the license.



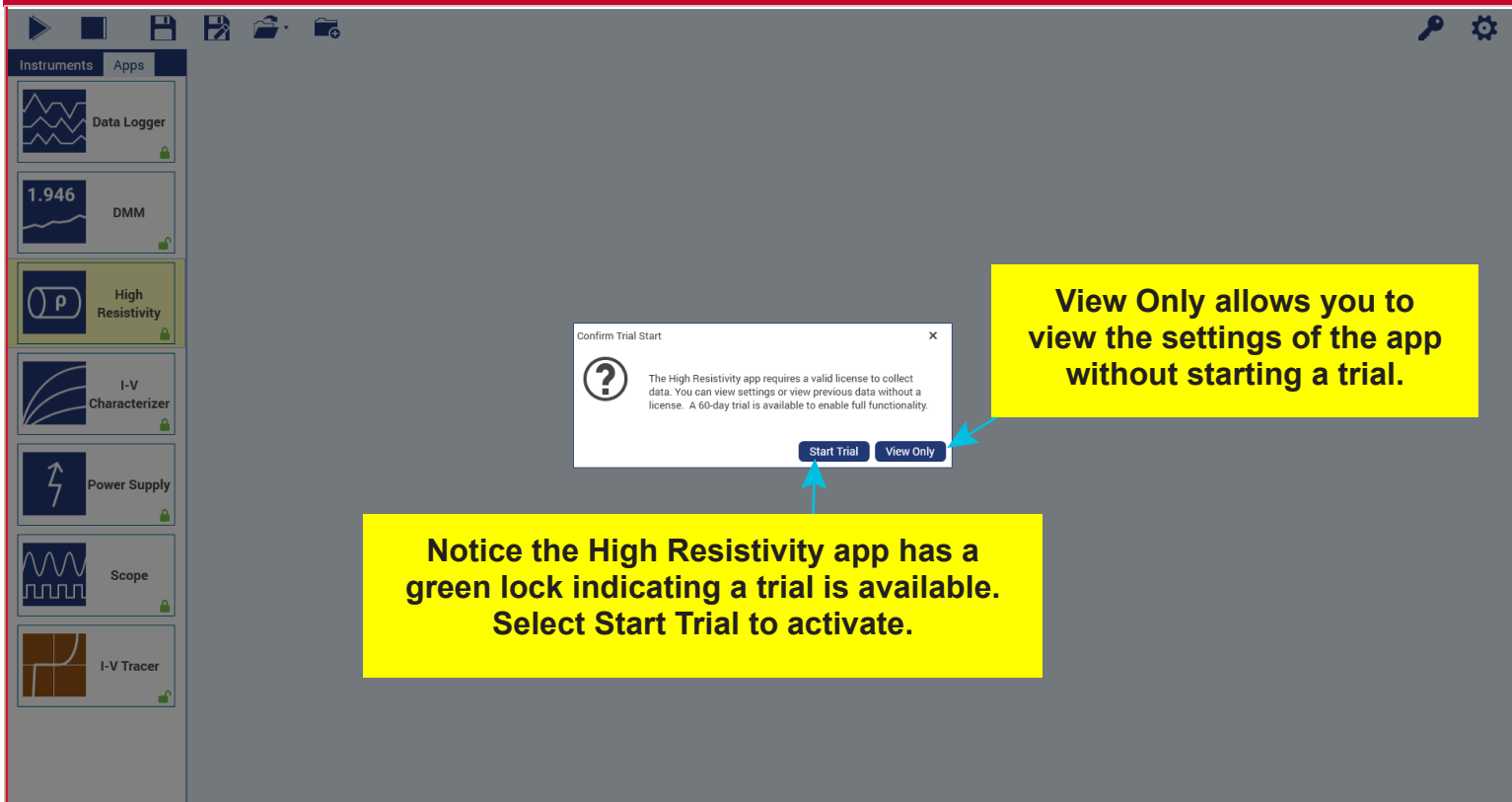
When you first open KickStart, the Instruments tab displays available instruments on the left. Select the Apps tab and you will see a lock on each App. The text below describes the licenses and lock icons:

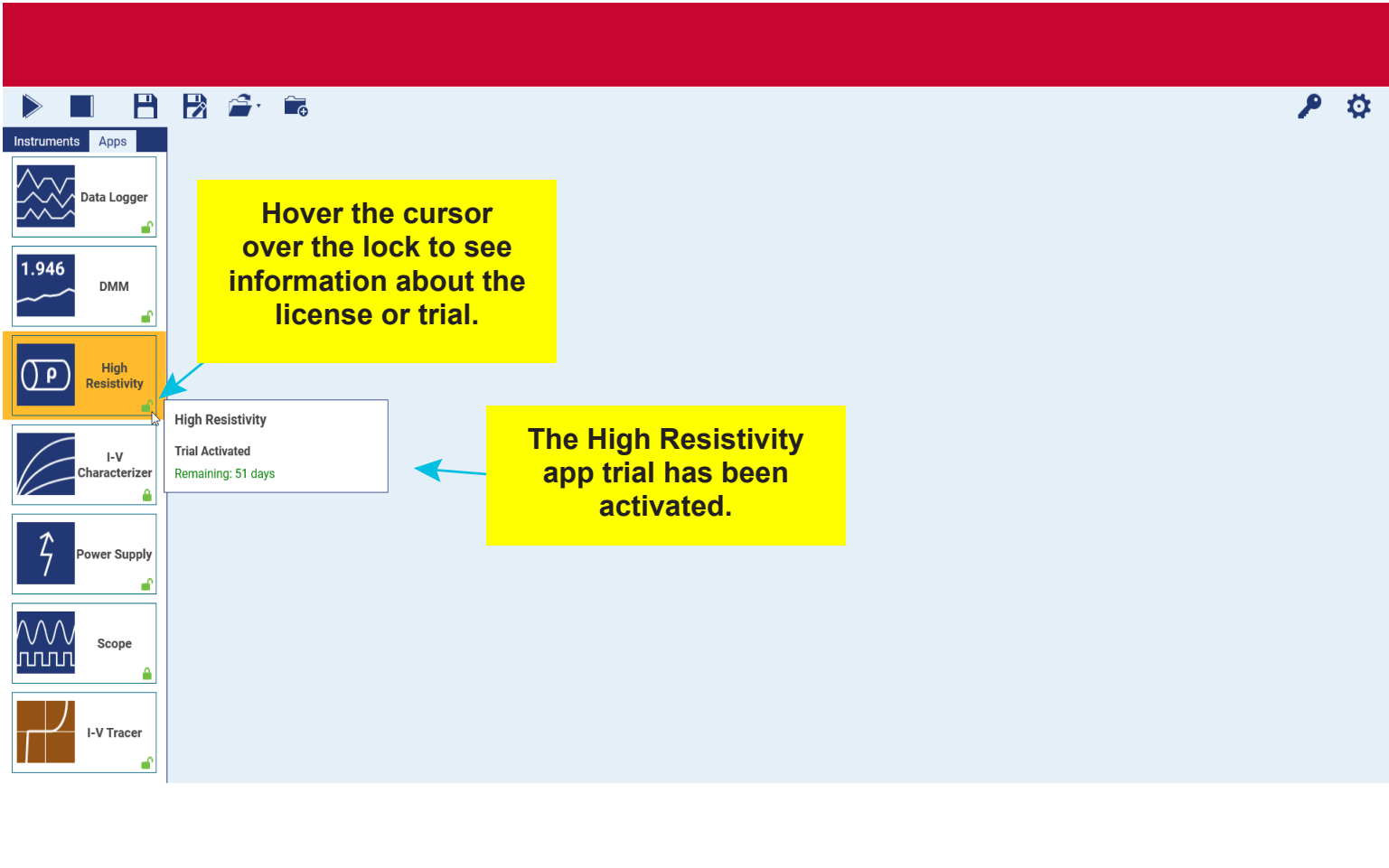
Red unlocked indicates a license or trial that will expire soon. The lock turns red when the license or trial is within 45 days of expiration.

Red lock indicates the license has expired. Also, no trial is available.

Green unlocked indicates a license or trial in use. The trial is for a limited time.

Green locked indicates a trial is available. The trial has not been activated.





Hover the cursor over the lock to see information about the license or trial.

The High Resistivity app trial has been activated.

High Resistivity
Trial Activated
Remaining: 51 days



Instruments Apps

DAQ
DAQ6510
My USB DAQ6510
LAN : 134.63.74.17
DMM
DMM7510
My DMM7510
USB

Select an instrument name to change it. Right-click it to view more details.

Instruments are automatically discovered and appear in the instruments pane.

Select to change your color theme.

Shelved Instruments

Advanced Discovery

Enter an IP address.

Simulated Instruments

Model

Name

Add

☒ Advanced

Navigation icons: Play, Stop, Save, Print, Help, and a folder icon.

Instruments | **Apps**

DAQ

DAQ6510
My USB DAQ6510
LAN : 134.63.74.17

DMM

DMM7510
My DMM7510
USB

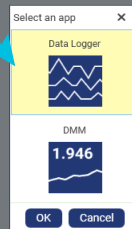
Shelved Instruments

Advanced Discovery
Enter an IP address.

Simulated Instruments
Model
Name

☒ Advanced

To launch an app, double-click or drag the instrument to the main window. For example, the Data Logger app has been added.



You can add multiple instruments and select an app for each one.

Select the app and select OK to run it.

Here is a Data Logger app example. The objective of this guide is to show functionality of KickStart software with multiple test examples.

In the Data Logger app, you can make more than one scan group and select a group to make changes.

Select Run to start testing.

Selecting the Instruments button shows instrument information and allows you to select multiple instruments in supported apps.



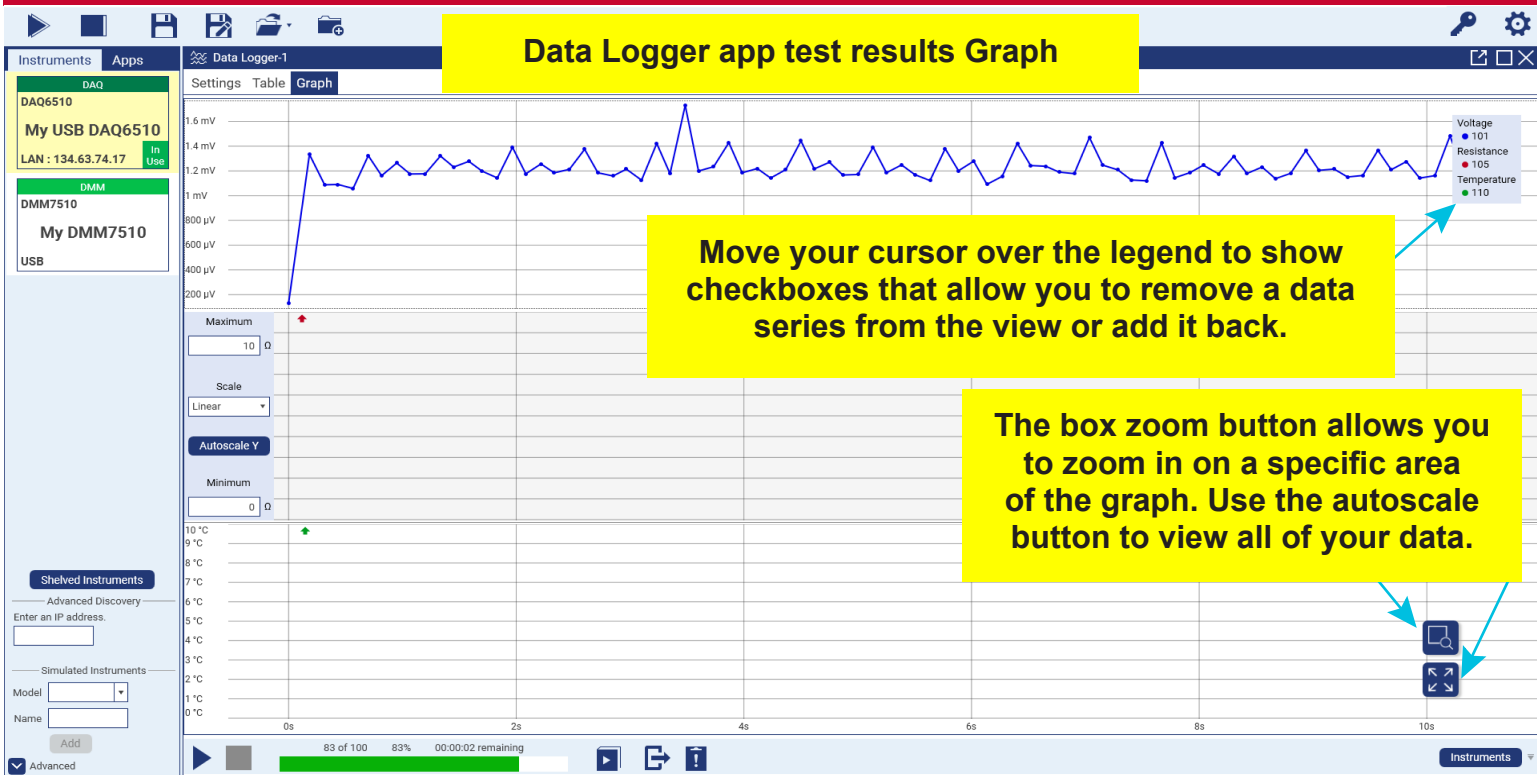
Rename or hide a column by moving your cursor to the far right and selecting the drop-down menu.

Settings	Table	Graph			
	101		-	105	110
	Time (s)	Voltage (V)	Rename channel...	Temperature (°C)	
1	0.000000	130.4924e-6	Hide	Low	Overflow
2	183.255e-3	1.333125e-3		Overflow	Overflow
3	316.697e-3	1.087836e-3		Overflow	Overflow
4	433.421e-3	1.090553e-3		Overflow	Overflow
5	566.798e-3	1.057833e-3		Overflow	Overflow
6	700.186e-3	1.323632e-3		Overflow	Overflow
7	816.904e-3	1.161639e-3		Overflow	Overflow
8	950.268e-3	1.263899e-3		Overflow	Overflow
9	1.066995	1.175119e-3		Overflow	Overflow
10	1.200366	1.176510e-3		Overflow	Overflow
11	1.333750	1.320319e-3		Overflow	Overflow
12	1.450469	1.231441e-3		Overflow	Overflow
13	1.583839	1.277140e-3		Overflow	Overflow
14	1.700551	1.197838e-3		Overflow	Overflow
15	1.833928	1.143120e-3		Overflow	Overflow
16	1.967314	1.390603e-3		Overflow	Overflow
17	2.084032	1.176756e-3		Overflow	Overflow
18	2.217402	1.256484e-3		Overflow	Overflow
19	2.334122	1.184285e-3		Overflow	Overflow
20	2.467497	1.213338e-3		Overflow	Overflow
21	2.600878	1.374660e-3		Overflow	Overflow
22	2.7171605	1.184874e-3		Overflow	Overflow
23	2.850977	1.159177e-3		Overflow	Overflow
24	2.967709	1.214419e-3		Overflow	Overflow
25	3.101709	1.125066e-3		Overflow	Overflow
26	3.233160	1.133333e-3		Overflow	Overflow
Min	0.000000	130.4924e-6		Overflow	Overflow
Max	10.453846	1.729782e-3		Overflow	Overflow
Mean	5.254503	1.222797e-3		0.000000	0.00
StdDev	3.055702	164.0915e-6		0.000000	0.00

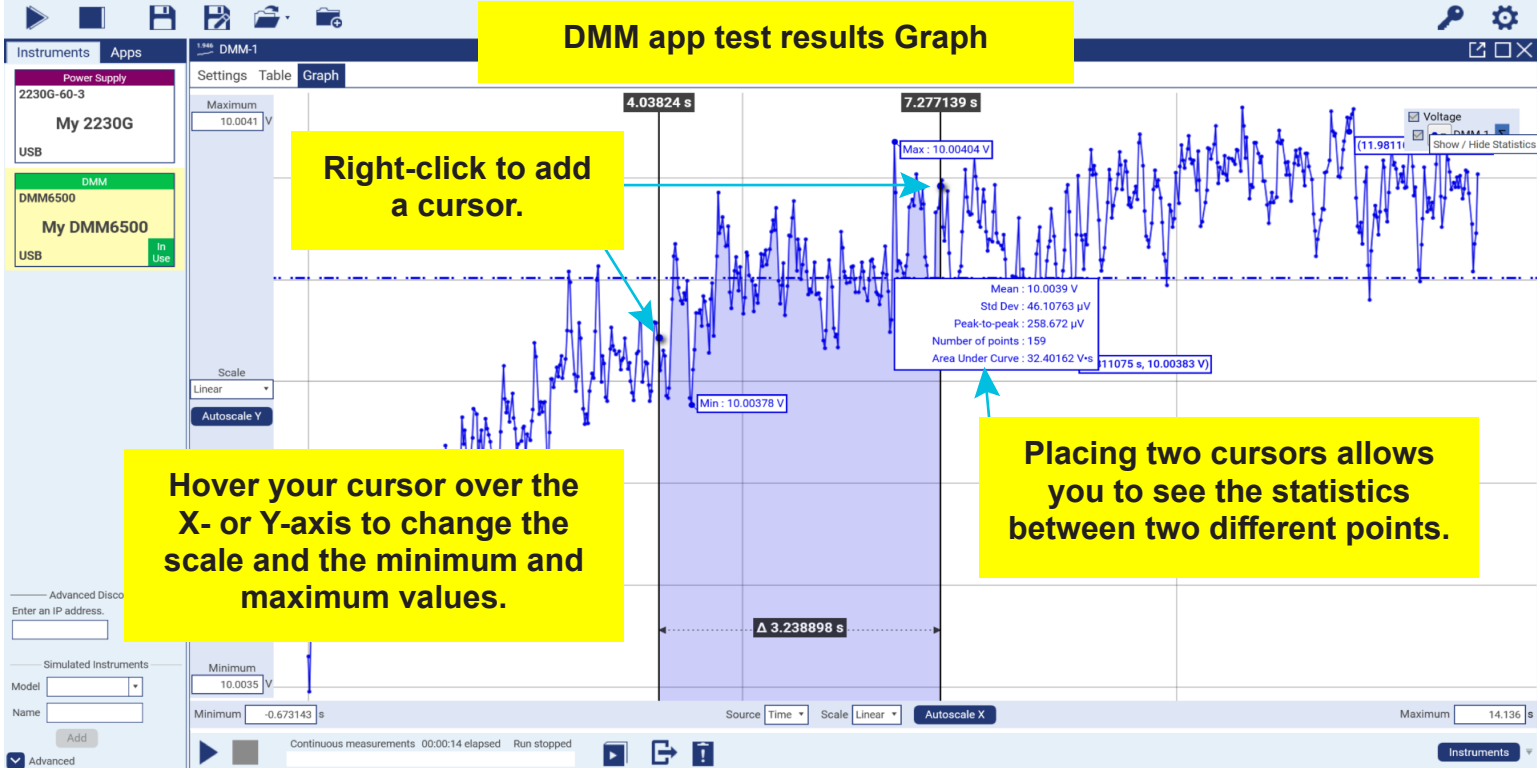
83 of 100 83% 00:00:02 remaining

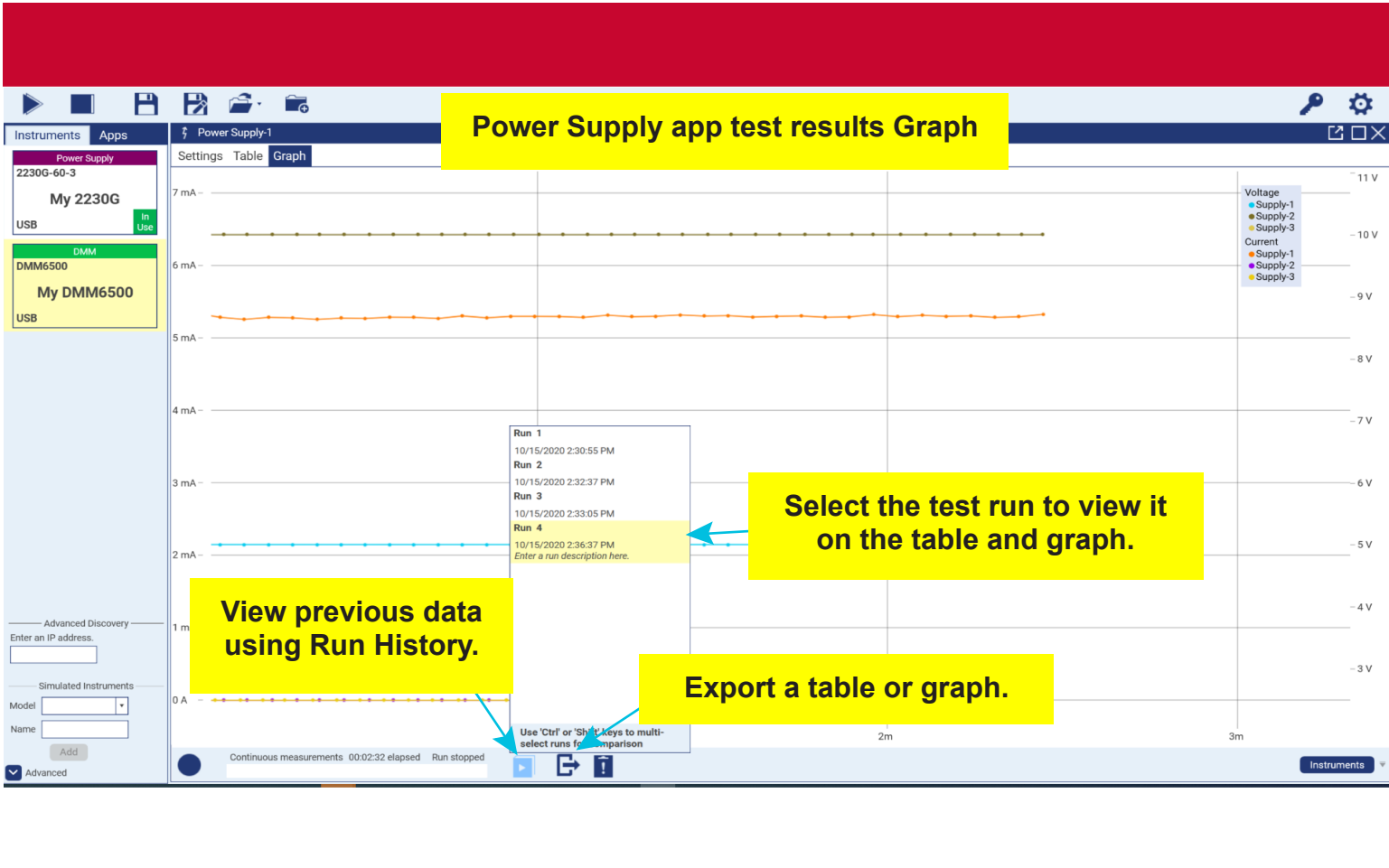


Instruments



DMM app test results Graph





Export selected data

When you select the export icon, the Export Data window opens. Here you can choose to export a table, graph, or both.

You can set your runs to export automatically. Make sure you choose the path for the saved files and create a file name.

You can export all of the runs or selected runs.

The 'Export Data' window is a light blue dialog box with a close button in the top right corner. It is divided into two main sections by a vertical line. The left section contains options for exporting a table: a checked checkbox for 'Export Table', a 'Format' dropdown menu set to 'CSV', a checked checkbox for 'Exclude hidden data', and an unchecked checkbox for 'Include test configuration'. The right section contains options for exporting a graph: a checked checkbox for 'Export Graph', 'Color theme' radio buttons for 'Light' (selected) and 'Dark', a 'Resolution' dropdown menu set to '800 x 600', and a checked checkbox for 'Show gridlines'. Below these options is a small line graph with a blue line showing a sharp peak. At the bottom of the window, there is an unchecked checkbox for 'Automatically export new runs', a 'Path' field with the value 'C:\Users\halfahel\Documents\KickStart\Projects', a 'Filename' field with the template '<app-name> <run> <time>', and an 'Example' section showing two file names: 'DMM-1 Run 1 2020-10-20T12.01.09.png' and 'DMM-1 Run 1 2020-10-20T12.01.09.csv'. At the very bottom, there are two buttons: 'Export Selected Runs' and 'Export All Runs', each with a 'Run 1' label below it.

Export Data

☒ Export Table

Format: CSV

☒ Exclude hidden data

☐ Include test configuration

☒ Export Graph

Color theme: Light (selected) Dark

Resolution: 800 x 600

☒ Show gridlines

☐ Automatically export new runs

Path: C:\Users\halfahel\Documents\KickStart\Projects

Filename: <app-name> <run> <time>

Example: DMM-1 Run 1 2020-10-20T12.01.09.png
DMM-1 Run 1 2020-10-20T12.01.09.csv

Export Selected Runs Run 1

Export All Runs Run 1

Scope app test Settings

In the Scope app, select the Graph tab in Waveforms mode to confirm that the correct waveform was retrieved.

Select the mode that relates to your data.

Set when the capture occurs.

Channel information is shown here. Select Retrieve Data to see the data collected on this channel.

You are unable to retrieve data from disabled channels. Enable or disable channels from your instrument.

Scope app test Settings

Mode

- Waveforms
- Measurements
- Screenshots

Stop Capture Count

Channel 1 ON Retrieve Data ☒

Label
Vertical scale 1 V/div
Coupling DC
Probe type TPP1000

Channel 2 ON Retrieve Data ☐

Label
Vertical scale 100 mV/div
Coupling DC
Probe type Other

Channel 3 OFF Retrieve Data ☐

Label
Vertical scale 100 mV/div
Coupling DC
Probe type Other

Channel 4 ON Retrieve Data ☐

Label
Vertical scale 100 mV/div
Coupling DC
Probe type Other

☒ References
☒ Math

Acquisition Settings

Acquisition Mode Stopped Sample Rate 1 MHz
Record Length 10 k Trigger Type Edge
Horizontal Scale 1 ms/div Trigger Source CH1

Shelved Instruments

Advanced Discovery

Enter an IP address.

Simulated Instruments

Model

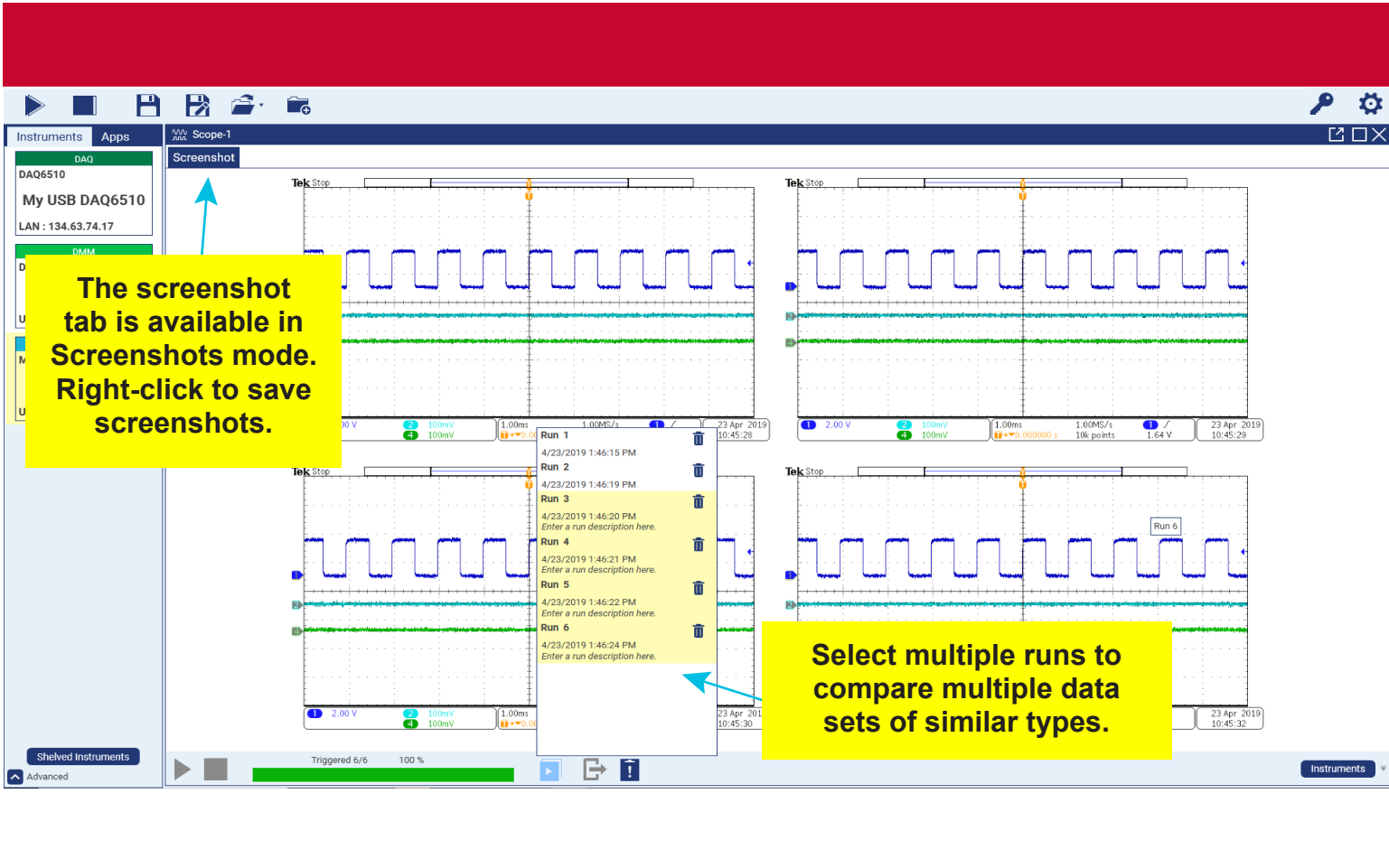
Name

Add

Advanced

Save Oscilloscope Setup to File

Load Setup File to Oscilloscope



Next steps

For more information and to view documentation specific to your instrument, see the Keithley Instruments website, tek.com/keithley.

Contact information: 1-800-833-9200

For additional contacts, see <https://www.tek.com/contact-us>

Find more valuable resources at TEK.COM.
Copyright © 2020, Tektronix. All rights reserved.
Tektronix products are covered by U.S. and foreign patents, issued and pending. Information in this publication supersedes that in all previously published material. Specification and price change privileges reserved. TEKTRONIX and TEK are registered trademarks of Tektronix, Inc. All other trade names referenced are the service marks, trademarks, or registered trademarks of their respective companies.



KKS-903-01 Rev. J / October 2020

