

Keithley Instruments, Inc.
28775 Aurora Road
Cleveland, Ohio 44139
1-888-KEITHLEY
www.keithley.com

Installation Instructions

Important Notice:

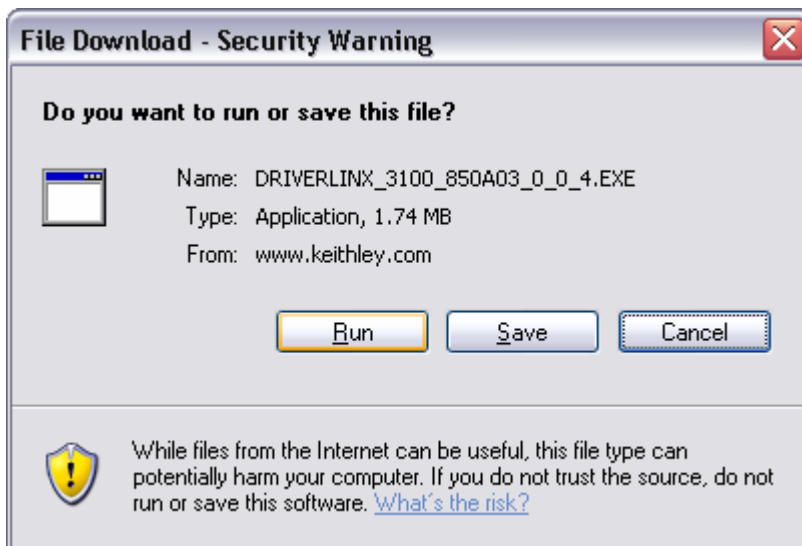
DRIVERLINX Driver Update (version 3100-850A03.0.0.4)

Users of Keithley Instruments Model KPCI 3101, 3102, 3103, 3104, 3110, or 3116 boards are advised to download and install an update for the DriverLINX software provided with the boards before attempting to calibrate the boards using the DriverLINX calibration utility.

The update is available for download at the following link from the Keithley Web site:

<https://www.keithley.com/data?asset=50730>

Please note that you will receive the following pop-up window:



It is recommended that the file is saved first to a desired location before running the software application.