

**PQA6UP Option SDI
PQA600 Picture Quality Analyzer
SD/HD SDI Interface Upgrade
Instructions**

www.tektronix.com



075-1011-00

Tektronix

Copyright © Tektronix. All rights reserved. Licensed software products are owned by Tektronix or its subsidiaries or suppliers, and are protected by national copyright laws and international treaty provisions.

Tektronix products are covered by U.S. and foreign patents, issued and pending. Information in this publication supersedes that in all previously published material. Specifications and price change privileges reserved.

TEKTRONIX and TEK are registered trademarks of Tektronix, Inc.

Table of Contents

Service safety summary	1
Kit description	1
Products	1
Kit parts list	1
Installation instructions	2
Minimum tool and equipment list	2
Install the SD/HD SDI interface card	3

Service safety summary

Only qualified personnel should perform service procedures. Read this *Service Safety Summary* before performing any service procedures.

Do not service alone. Do not perform internal service or adjustments of this product unless another person capable of rendering first aid and resuscitation is present.

Disconnect power. To avoid electric shock, switch off the instrument power, then disconnect the power cord from the mains power.

Use care when servicing with power on. Dangerous voltages or currents may exist in this product. Disconnect power, remove battery (if applicable), and disconnect test leads before removing protective panels, soldering, or replacing components.

To avoid electric shock, do not touch exposed connections.

Kit description

This kit describes how to install the SD/HD SDI Interface (Option SDI) in a Tektronix PQA600 Picture Quality Analyzer.

Products

PQA600. All serial numbers

Kit parts list

Quantity	Part number	Description
1 ea	071-2181-03	MANUAL, TECH; SUPPLEMENTAL INFORMATION SHEET FOR THE PEOPLES REPUBLIC OF CHINA
1 ea	075-1011-00	MANUAL, TECH INSTALLATION, PQA6UP OPTION SDI
1 ea	119-7399-00	OEM ROHS COMPLIANT; VIDEO CAPTURE CARD;

Installation instructions

This section contains all procedures needed to install the SD/HD SDI Interface Card in a PQA600.

Minimum tool and equipment list

The cabinet of the PQA600 does not require tools to install new cards in the PC. However, the installation of the SD/HD SDI Interface card must be performed at a static-controlled workstation to protect the PC.

These instructions are for qualified service personnel who are familiar with servicing the product. If you need further details for disassembling or reassembling the product, please contact your closest Tektronix Service Center.

Install the SD/HD SDI interface card

WARNING. To avoid electric shock, switch off the PC power, then disconnect the power cord from the mains power. Failure to do so can cause injury or death.

CAUTION. To avoid ESD damage to the PQA600, perform all work on the PQA600 at a static-controlled workstation.

1. Remove the power cord.
2. Push the lever on the rear of the PC away from the case and pull the side panel out from the case. Lower the side panel until it is almost perpendicular to the case and pull it away from the chassis.



Figure 1: Push the lever back to release the side panel

3. Pull down on the blue plastic lever and pull the retainer straight out from the PC.

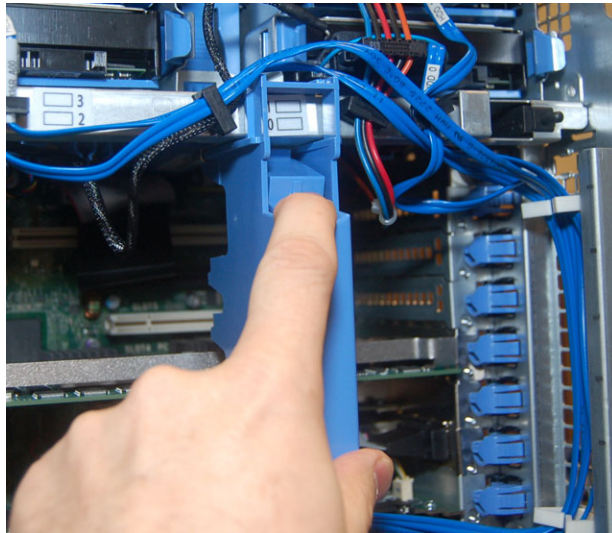


Figure 2: Pull down on the lever and pull straight out

4. On the fourth slot up from the bottom of the card cage, push down on the blue plastic board lock and push it toward the rear of the PC, rotating it out of the way of the slot.

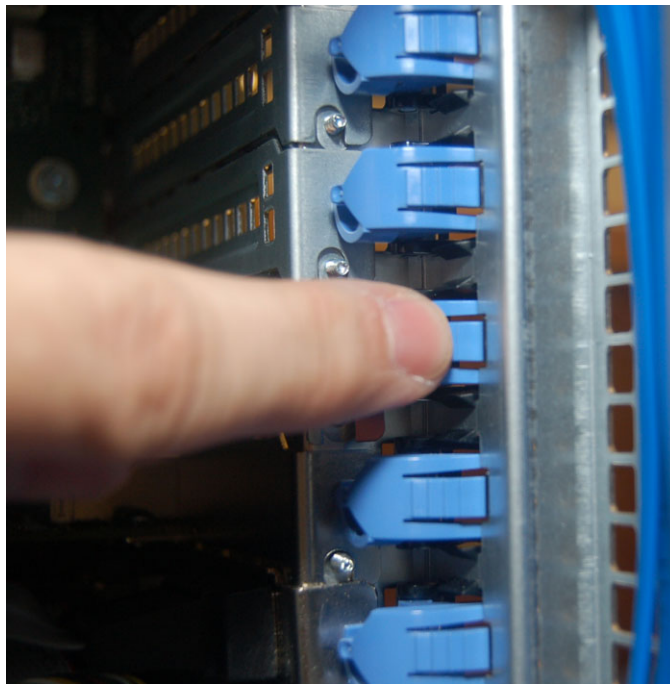


Figure 3: Push the board retainer out of the back out of the way

5. Remove the metal shield from the slot.
6. Align the SDI Interface card with the open slot on the right and the black plastic board guide on the left. Push the board in until it seats fully into the socket on the motherboard.

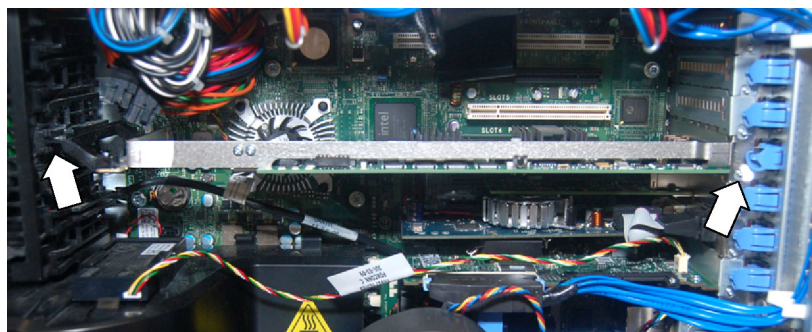
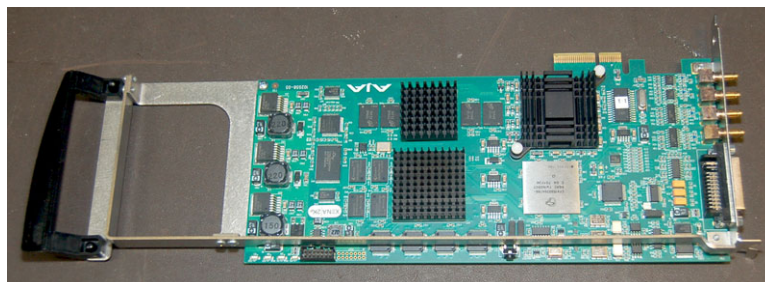
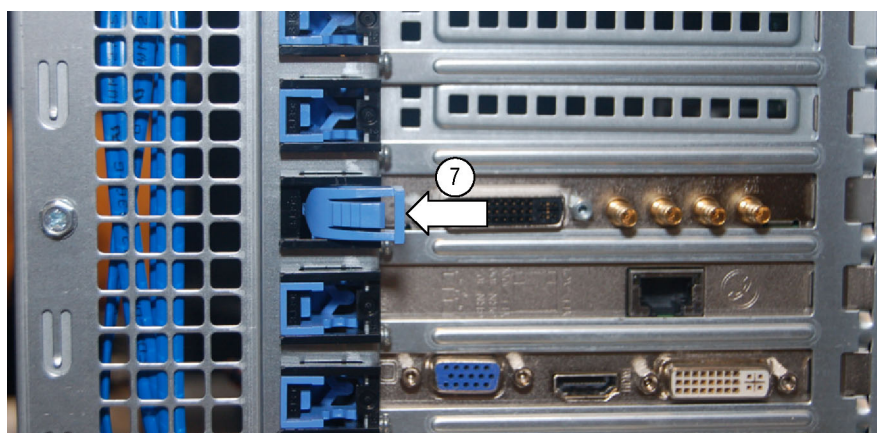


Figure 4: Align the SD/HD SDI interface card in the chassis

7. From the rear of the PC, push the blue plastic card retainer in until it locks in place.



8. To reinstall the blue plastic board retainer, push down on the lever on the retainer and slide the retainer into the flanges on the chassis. Push the retainer in until it snaps in place.

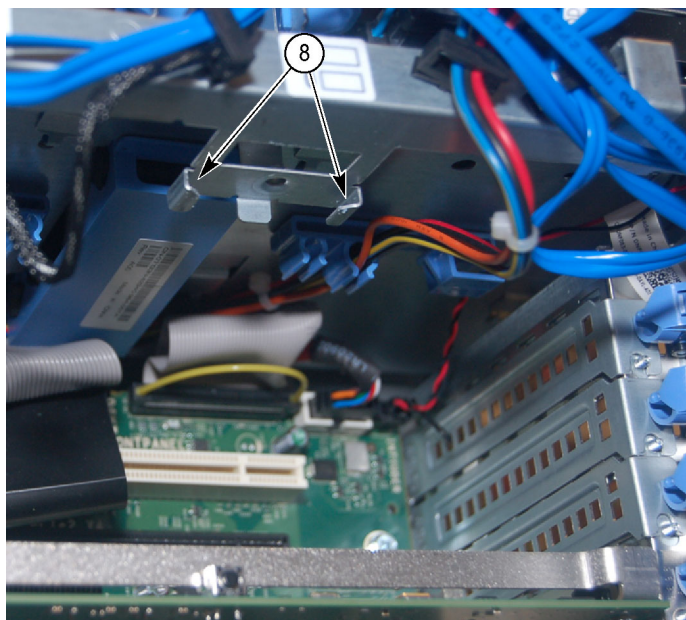


Figure 5: Location of flanges for board retainer

9. Set the slide panel into the bottom of the PC case and tilt it into the chassis. Push on the top of the side panel until it latches in place.
10. Reconnect the monitor, mouse, and keyboard to the PC.
11. Connect the power cord to the PC.
12. Boot the PQA600.
13. Launch the PQA software.
14. Click the **Gen / Cap** button. If the Capture-Generate screen appears, the card is correctly installed.

This completes the SD/HD SDI interface upgrade.