



**650-6183-00 and 650-6184-00
RSA7100 and CTRL7100 Series
Packaging Kit**

Instructions

www.tek.com



071-3736-00

Copyright © Tektronix. All rights reserved. Licensed software products are owned by Tektronix or its subsidiaries or suppliers, and are protected by national copyright laws and international treaty provisions.

Tektronix products are covered by U.S. and foreign patents, issued and pending. Information in this publication supersedes that in all previously published material. Specifications and price change privileges reserved.

TEKTRONIX and TEK are registered trademarks of Tektronix, Inc.

Contacting Tektronix

Tektronix, Inc.
14150 SW Karl Braun Drive
P.O. Box 500
Beaverton, OR 97077
USA

For product information, sales, service, and technical support:

- In North America, call 1-800-833-9200.
- Worldwide, visit www.tek.com to find contacts in your area.

Table of Contents

Packaging kit parts lists	1
650-6183-00 CTRL7100 packaging procedure	2
650-6184-00 RSA7100 packaging procedure	10

Packaging kit parts lists

These instructions provide procedures for using the following packaging kits.

- 650-6183-00 CTRL7100 kit
- 650-6184-00 RSA7100 kit



WARNING. Injury may occur when lifting heavy objects. The CTRL7100 and RSA7100 are heavy instruments. To avoid injury, ensure proper lifting technique using two people or a mechanical lift when performing the procedures in this document.

Identify which kit you ordered and then refer to one of the following tables for a list of items included in your kit.

Table 1: 650-6183-00 CTRL7100 Packaging Kit parts list

Item	Description	Quantity
004-5964-xx	BOX, SHIPPING CTRL7100A	1
004-5965-xx	CUSHION, MTL: PACKAGING, TOP AND BOTTOM	4
004-5966-xx	CUSHION, MTL: PACKAGING, FRONT & BACK	2
004-5967-xx	CUSHION, MTL: PACKAGING, LEFT & RIGHT	2
004-5968-xx	CUSHION, MTL: PACKAGING, REAR PANEL	1
006-8267-xx	BAG - PLASTIC, 32 X 32 X .004 THK LDPE	1
071-3736-xx	[This document.] CTRL7100 AND RSA7100 SERIES PACKAGING KIT INSTRUCTIONS	1

Table 2: 650-6184-00 RSA7100 Packaging Kit parts list

Item	Description	Quantity
004-5969-xx	BOX, SHIPPING RSA7100A	1
004-5973-xx	BOX, SHIPPING, RSC (for accessories)	1
004-6118-xx	CUSHION MATERIAL; PACKAGING FOR RSA7100 CONTROLLER	1
006-8267-xx	BAG - PLASTIC, 32 X 32 X .004 THK LDPE	1
071-3736-xx	[This document.] CTRL7100 AND RSA7100 SERIES PACKAGING KIT INSTRUCTIONS	1

650-6183-00 CTRL7100 packaging procedure

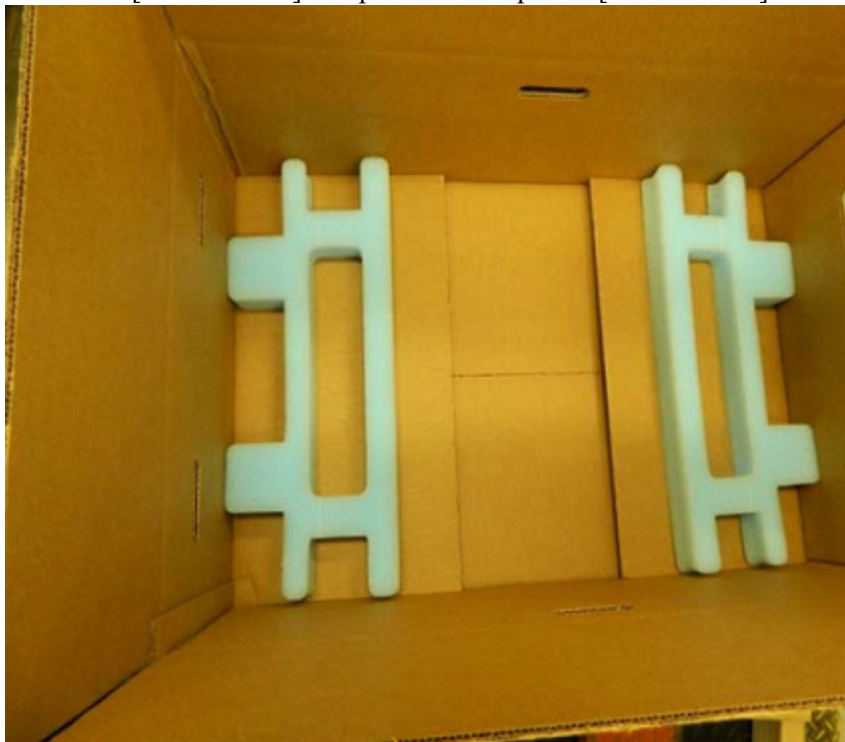


WARNING. *Injury may occur when lifting heavy objects. The CTRL7100 is a heavy instrument. To avoid injury, ensure proper lifting technique using at least two people when performing the procedures in this document.*

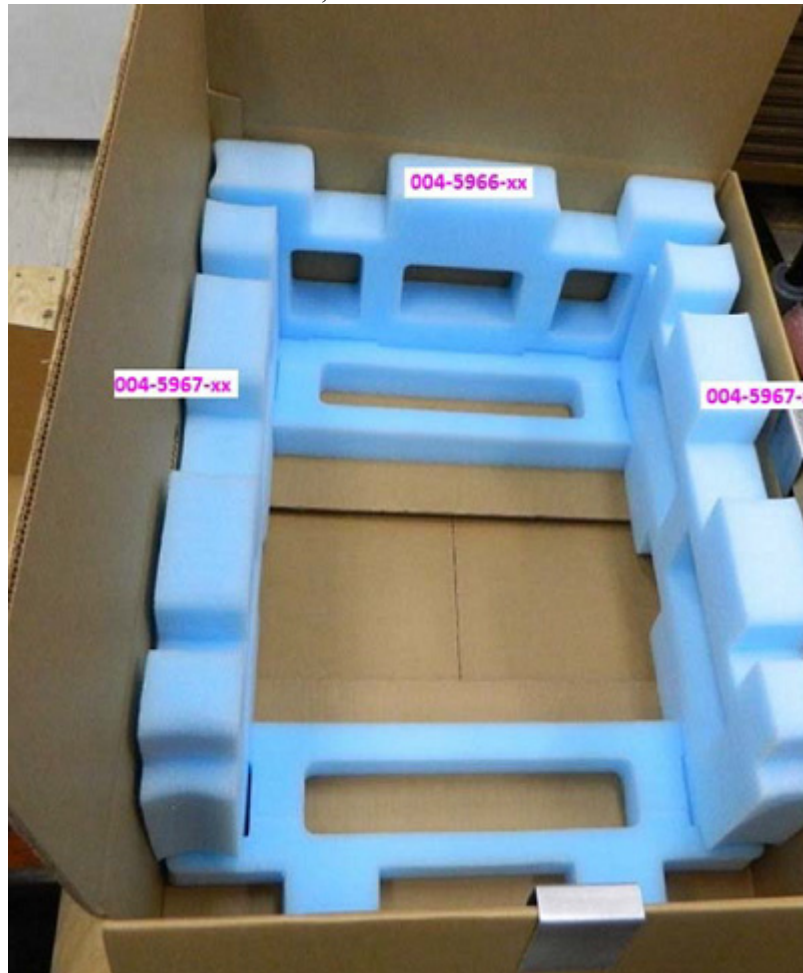
1. Using at least two people, slide 32" x 32" bag [006-8267-xx] around unit and taped closed.



2. Make box [004-5964-xx] and place 2 foam pieces [004-5965-xx] in as shown.



3. Install the following 3 foam pieces as shown: one 004-5966-xx, two 004-5967-xx.



4. Using at least two people, lift controller and place in box with blue pieces, as shown.



5. Insert foam pieces [004-5966-xx] and [004-5968-xx], as shown, with cutout aligning with tab on controller.



6. Place 2 foam pieces [004-5965-xx] as shown.



7. Close and tape box. Attach label 1 of 3 to this box, as shown.



8. Add "Band on Pallet" sheet on box as shown.

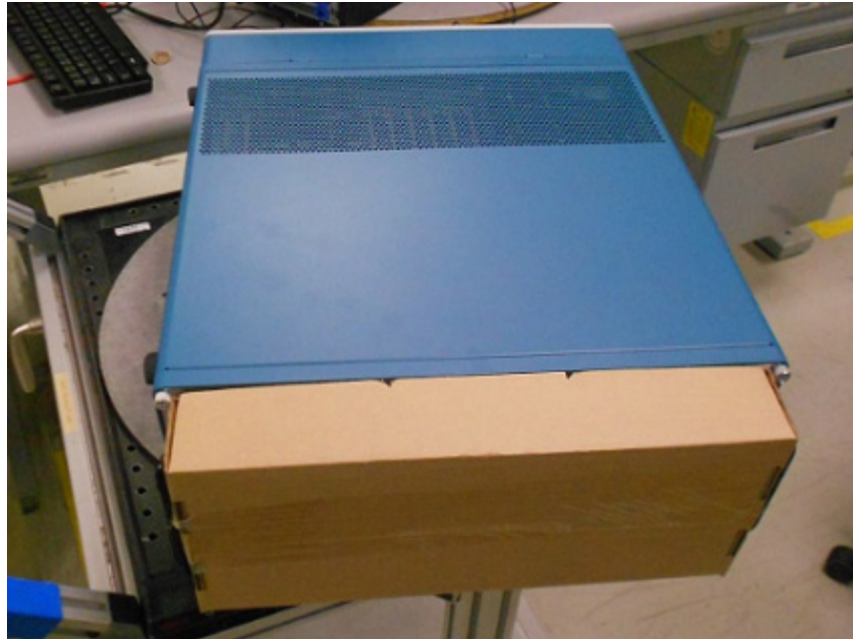


650-6184-00 RSA7100 packaging procedure



WARNING. *Injury may occur when lifting heavy objects. The RSA7100 is a heavy instrument. To avoid injury, ensure proper lifting technique using two people or a mechanical lift when performing the procedures in this document. A mechanical lift can also be used.*

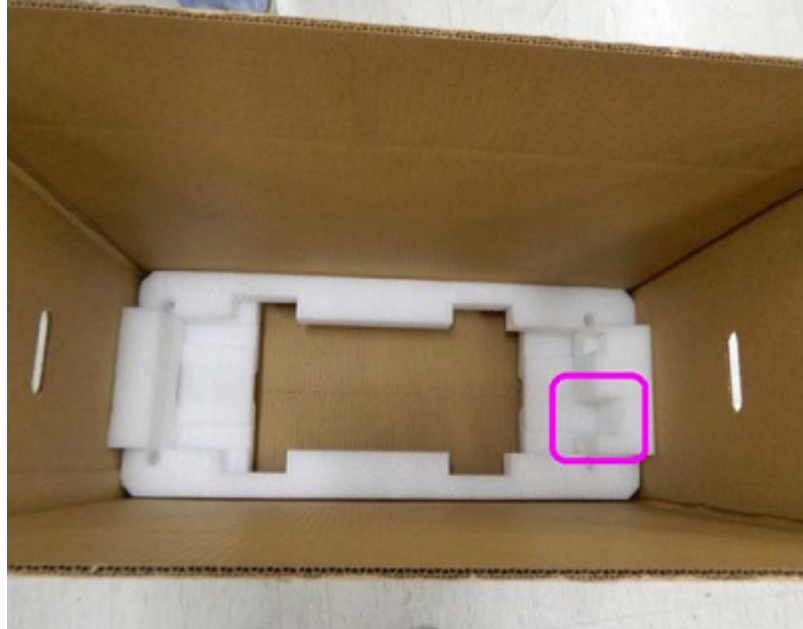
1. Install a cardboard protector to the rear of the instrument, as shown, to protect the connectors.



2. Open the 32" x 32" bag [006-8267-xx] and place it on the floor. Place the unit on its side, with handle up, onto the bag. Lift unit up and pull the bag up and around unit.



3. Form box [004-5969-xx]. Place part of foam packaging [044-6118-xx] into box bottom. Locate cutout for connectors (see outlined area in image).



4. Using two people or mechanical lift, lower unit into box, ensuring connectors line up with cutout.



5. Tape bag closed as shown.



6. Place other foam piece [044-6118-xx] on top of unit and align cutout with connectors.



7. Close and tape box. Attach label 2 of 3 to this box, as shown.



8. If you have accessories and are including them, place all accessories in the accessories box that may have been included with your kit (004-5973-xx) and fill all voids with bubble wrap or like material to secure items in place.



- 9. Close and tape the accessories box and attach the label to the box.**

