

**SPECMONUP Option 200
SPECMON Series Real-Time Spectrum Analyzers
Enhanced DPX and Triggers Upgrade
Instructions**

www.tektronix.com



071-3076-00

Tektronix

Copyright © Tektronix. All rights reserved. Licensed software products are owned by Tektronix or its subsidiaries or suppliers, and are protected by national copyright laws and international treaty provisions.

Tektronix products are covered by U.S. and foreign patents, issued and pending. Information in this publication supersedes that in all previously published material. Specifications and price change privileges reserved.

TEKTRONIX and TEK are registered trademarks of Tektronix, Inc.

Contacting Tektronix

Tektronix, Inc.
14150 SW Karl Braun Drive
P.O. Box 500
Beaverton, OR 97077
USA

For product information, sales, service, and technical support:

- In North America, call 1-800-833-9200.
- Worldwide, visit www.tektronix.com to find contacts in your area.

Table of Contents

| | |
|--|---|
| Service safety summary | 1 |
| Kit description | 2 |
| Products | 2 |
| Kit parts list | 2 |
| Installation instructions | 3 |
| Minimum tool and equipment list | 3 |
| Remove cosmetic top cover | 3 |
| Replace the existing RTT/DPX board | 5 |
| Reinstall cosmetic top cover | 7 |
| Install option key | 7 |
| Attach labels | 9 |
| Verify instrument software version | 9 |

Service safety summary

Only qualified personnel should perform service procedures. Read this *Service Safety Summary* before performing any service procedures.

Do not service alone. Do not perform internal service or adjustments of this product unless another person capable of rendering first aid and resuscitation is present.

Disconnect power. To avoid electric shock, switch off the instrument power, then disconnect the power cord from the mains power.

Use care when servicing with power on. Dangerous voltages or currents may exist in this product. Disconnect power, remove battery (if applicable), and disconnect test leads before removing protective panels, soldering, or replacing components.

To avoid electric shock, do not touch exposed connections.

Kit description

This kit describes the installation of the Option 200 Enhanced DPX and Triggers option in a SPECMON Series Real-Time Spectrum Analyzer. This kit installs a new RTT/DPX board that enables enhanced DPX performance and trigger functionality. It replaces the standard RTT/DPX board in the instrument.

Products

SPECMON3. All instruments

SPECMON6. All instruments

Kit parts list

| Quantity | Part number | Description |
|----------|-------------|---|
| 1 | 071-3076-XX | SPECMONUP OPTION 200 UPGRADE INSTRUCTIONS |
| 1 | 863-0273-XX | CIRCUIT BD ASSY; RTT/DPX, PB-FREE, 870027300 FUNCTIONALLY TESTED, 878027300 TESTED, 389367101 WIRED, OPTION 200 |
| 1 | N/A | DATA SHEET; SOFTWARE OPTION KEY AUTHORIZATION CERTIFICATE, UPGRADE KITS |
| 1 | N/A | LABEL, MANUFACTURED; OPTION KEY UPGRADE LABEL 2.100 X 2.700, SAFETY CONTROLLED |

Installation instructions

This section contains all procedures needed to remove the existing RTT/DPX board and replace it with the Option 200 RTT/DPX board in SPECMON Series instruments.

Minimum tool and equipment list

The following tools are required to install the Option 200 upgrade. All tools are standard tools that should be readily available.

Table 1: Tools required for installation

| Item no. | Name | Description |
|----------|-------------------------------|--|
| 1 | Screwdriver handle (magnetic) | Torque driver handle. Accepts 1/4-in. hex-head driver tips |
| 2 | T15 TORX tip | TORX-driver tip for T15 size screws on the instrument covers |
| 4 | T20 TORX tip | TORX driver tip for T20 size screw heads |

Optional: A torque wrench helps ensure reliable connections to meet the nominal torque values that may be listed in these instructions.

Remove cosmetic top cover

NOTE. *Right-side or left-side references in these instructions assume you are viewing the instrument from the front panel.*



WARNING. *To avoid electric shock which may result in injury or loss of life, switch off the instrument power, then disconnect the power cord from the mains power.*

1. Remove the power cord.
2. If it is installed, pull the front protective cover off the instrument.
3. Remove the two T15 TORX-driver screws that attach the plastic carrying handle to the side of the instrument. (It is not necessary to remove the black metal handles.) (See Figure 1.)
4. Remove four T15 screws along each side that attach the top and bottom covers to the instrument, and remove two T20 screws near the front edge of the top cover (next to the folding handles).

5. Remove the top cover (leave the bottom cover in place). Remove the top cover by pulling straight back about 1 inch. Then pull the sides of the top cover outward, flexing them slightly to clear the instrument chassis, and pull it away from the instrument.
6. Remove the 18 T15 screws that attach the top internal cover to the chassis, and then remove the top internal cover from the instrument.

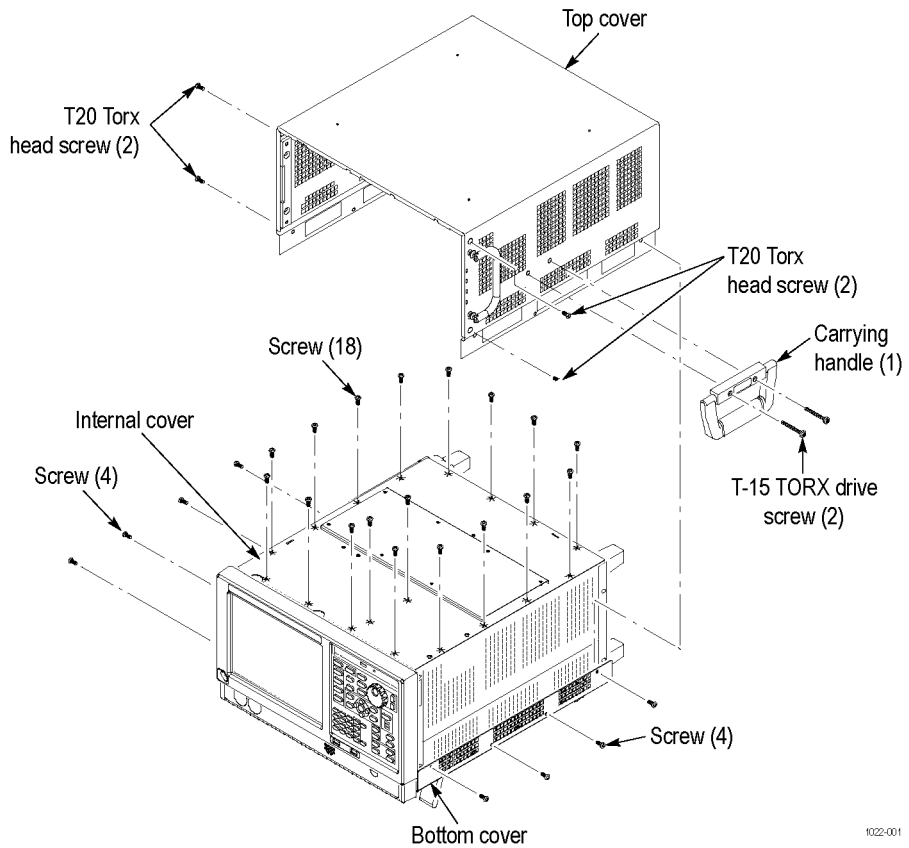


Figure 1: Removing the cosmetic top cover

Replace the existing RTT/DPX board

1. Use the board ejectors to remove the installed RTT/DPX board from the instrument. Place the board into a static-shielded bag.

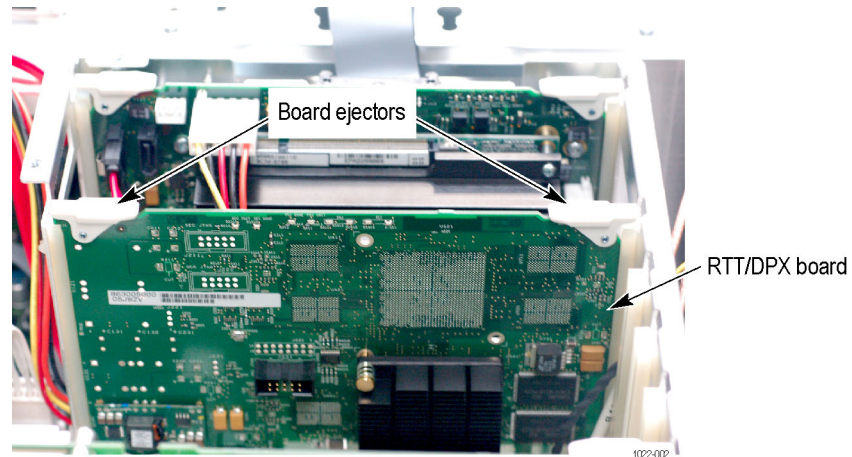


Figure 2: Standard RTT/DPX board



CAUTION. To prevent damage to the connector on the Digital Interface board, gently slide and then connect the Option 200 RTT/DPX board into the Digital Interface board connector.

2. Install the new Option 200 RTT/DPX board, provided in the kit, into the slot from which you removed the original RTT/DPX board. Be careful not to bend the CPCI connector pins on the Digital Interface board.

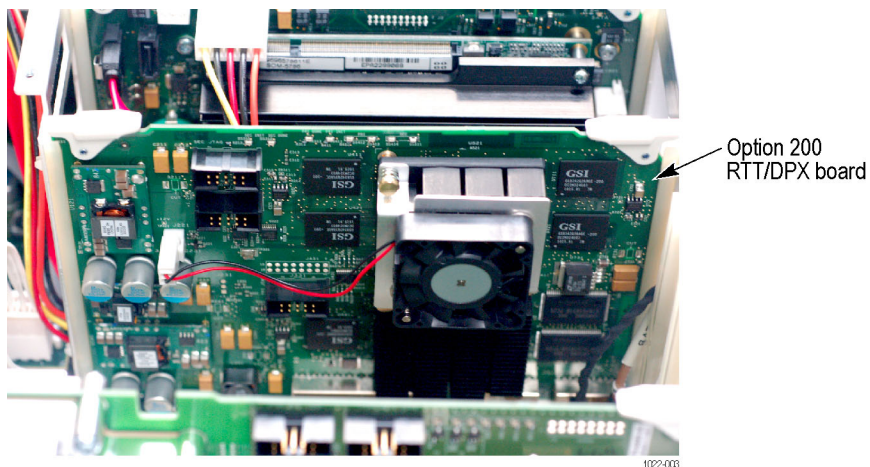


Figure 3: Option 200 board installed

3. Reinstall the top internal cover. (See Figure 1 on page 4.)
 - Place the top internal cover onto the instrument, aligning the two protrusions on the cover with the two slots in the chassis.
 - Replace the 18 T15 screws that attach the top internal cover to the chassis. Torque these screws to 8.0 in/lb.

Reinstall cosmetic top cover

Reinstall the top and bottom covers. (See Figure 1 on page 4.)

1. Place the instrument on the rear feet, so the front panel is facing up and the top is toward you.
2. Place the top cover over the top of the instrument and slide it toward the front panel. Make sure that the top cover wraps around the flanges on the rear panel on all three sides.
3. Reinstall the four T20 Torx head screws (two on each side) near the front edge of the top cover (next to the folding handles) that attach the top cover to the instrument. Torque these screws to 8.0 in/lb.
4. Align the four screw holes on each side in the top and bottom covers with the holes in the chassis, and install eight T15 screws, four on each side. Torque these screws to 8.0 in/lb.
5. Position the plastic carrying handle and its bracket on the right side of the instrument, and install the two T15 screws that attach it in place. Torque these screws to 8.0 in/lb.

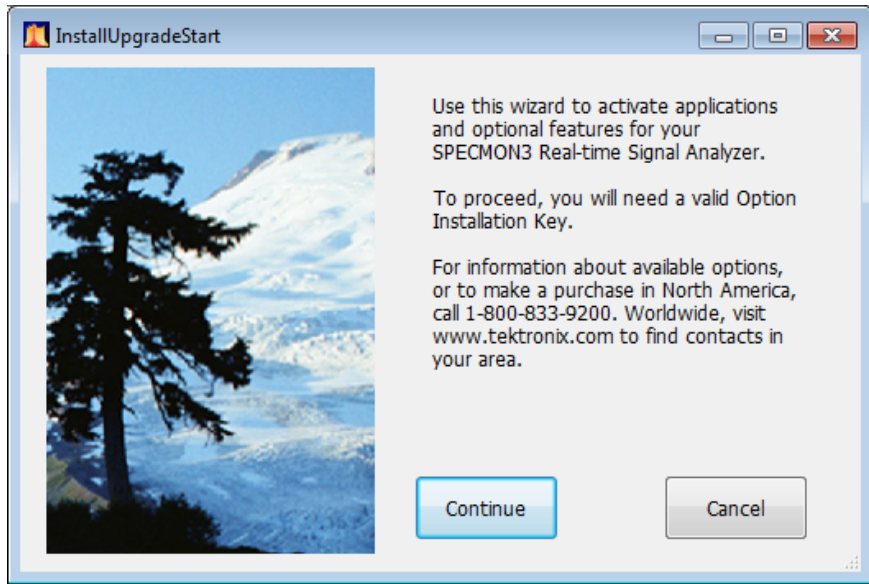
Install option key

To activate the enhanced DPX and Trigger functionality option, you must enter a new option key.

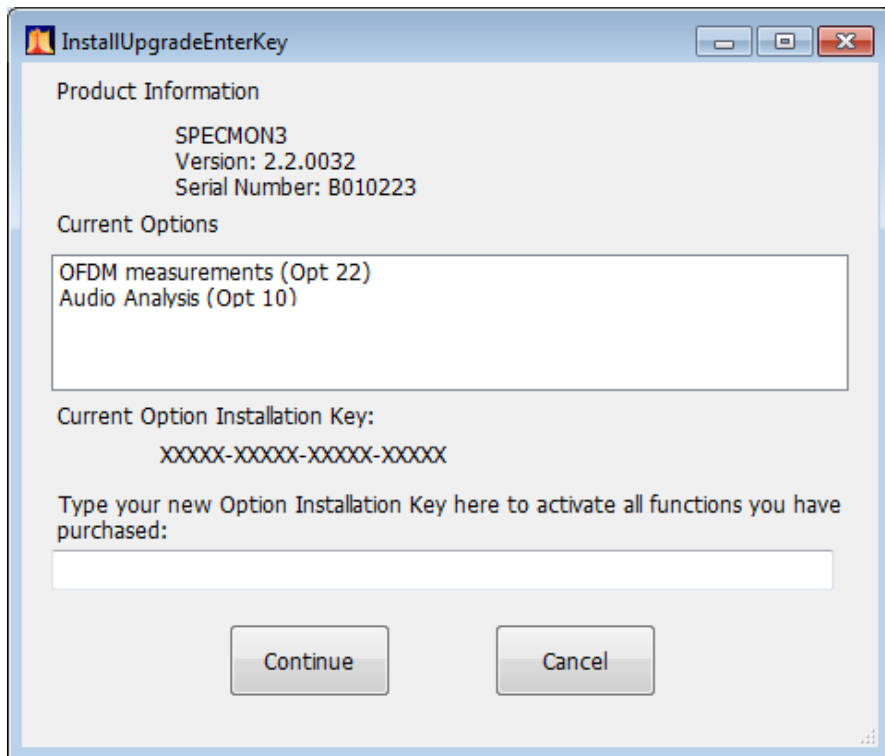
1. Power on the instrument.

NOTE. *When the analyzer application launches, it will display an error message indicating that the current option key does not support the new option hardware. Click OK to clear the error message.*

2. Select **Tools > Install Upgrades...** to start the upgrade installation process.
3. Click Continue from the Install Upgrades introduction screen.



4. Enter the option key provided by Tektronix, and follow the on-screen instructions to install the option.



5. Power off the instrument, then power back on.

6. In the Help menu, select About Tektronix Real-Time Analyzer.
7. Verify the new option is listed.

Attach labels

Please attach all labels provided in this kit on the instrument's rear panel.

Verify instrument software version

Tektronix recommends to update to the latest available application software for your instrument.

1. Select **Help > About** to check the software version.
2. Use your Web browser to go to: www.tektronix.com/software.
3. Search for your instrument's model number and follow the link to the software.
4. If the installed software is older than that available, download the software.
5. Follow the instructions on the Web page to install the software.

■ End of Document ■