

**SerialXpress® SDX100**  
**Advanced Jitter Generation Tool for Tektronix AWG70000,**  
**AWG7000, and AWG5000 Series Signal Generators**  
**Printed Help Document**



077-0050-08

**Tektronix**



**SerialXpress® SDX100**  
**Advanced Jitter Generation Tool for Tektronix AWG70000,**  
**AWG7000, and AWG5000 Series Signal Generators**  
**Printed Help Document**

Copyright © Tektronix. All rights reserved. Licensed software products are owned by Tektronix or its subsidiaries or suppliers, and are protected by national copyright laws and international treaty provisions.

Tektronix products are covered by U.S. and foreign patents, issued and pending. Information in this publication supersedes that in all previously published material. Specifications and price change privileges reserved.

TEKTRONIX and TEK are registered trademarks of Tektronix, Inc.

SerialXpress® SDX100 is a registered trademark of Tektronix, Inc.

MATLAB®. Copyright 1984 - 2014 The MathWorks, Inc.

SerialXpress Online Help, part number 076-0112-08.

### **Contacting Tektronix**

Tektronix, Inc.  
14150 SW Karl Braun Drive  
P.O. Box 500  
Beaverton, OR 97077  
USA

For product information, sales, service, and technical support:

- In North America, call 1-800-833-9200.
- Worldwide, visit [www.tektronix.com](http://www.tektronix.com) to find contacts in your area.

# Table of Contents

## Introduction

Welcome .....	1
Free Trial .....	1
Related Documentation .....	2
Conventions .....	2
Feedback.....	2

## Getting Started

Minimum System Requirements.....	3
Ordering SerialXpress.....	3
Installation.....	4
AWG70000 Series configuration utility .....	4
Connection Setups	
Setup for Base Data Signal Generation (AWG70000A).....	5
Setup for Base Data Signal Generation (AWG5000 and AWG7000).....	6

## Operating Basics

About Basic Operations.....	7
Overview of the Software .....	9
Starting the Software .....	11
Exiting the Software.....	11
File Name Extensions and Directories .....	12
Menus and Toolbars	
Menu Bar .....	14
Standard Toolbar.....	17
Status Bar .....	18
Waveform List .....	18
Toolbar Options and Dialog Boxes	
Mode .....	20
Calibration.....	20
Overview .....	22
Find Instruments .....	23
Graph Setup .....	23
Compile .....	25
Compile Settings.....	25
On/Off.....	28
Run .....	28
Batch Process.....	28

Option Installation .....	31
Restore Default Setup .....	32
Open Setup .....	32
Save Setup .....	32
Save Setup As .....	32
Import from File .....	32
Import from Tektronix Oscilloscope.....	33
PRBS Editor.....	34
Pre/De-Emphasis and Preshoot Advanced Setup.....	35

## Creating a Signal

Base Pattern	
Setting the Base Pattern .....	39
Creating the Base Data .....	48
Calibration for Base Pattern Signals .....	51
Sequencing	
Setting the Sequence Parameter .....	54
Transmitter	
Setting Jitter Parameters .....	57
Channel/Cable	
Setting ISI and S-Parameter Filter Parameters .....	61

## Instrument Control

Connecting to an instrument.....	67
Controlling an AWG70000A Series Arbitrary Waveform Generator .....	69
Controlling an AWG5000 or AWG7000 Series Arbitrary Waveform Generator .....	70
Connecting to and Controlling an Oscilloscope.....	73

## Graphing

Zooming Graphs .....	77
Rise/Fall .....	78
Simulated Data Signal .....	79
Random Jitter .....	80
Periodic Jitter .....	81
Total Jitter .....	82
Normal Eye.....	83
Eye DPO.....	84
TIE .....	85

## Reference

Error Messages.....	87
Shortcut Keys .....	91

PRBS Editor Starting Values .....	91
AWG Specifications .....	92
Interleave (AWG7000 Series only) .....	92
Zeroing .....	94
Parameter Definitions .....	95
About Calibration .....	95
About Spread Spectrum Clocking (SSC) .....	96
Custom SSC .....	96
About Wrap Between Sequence Elements .....	97
About Inter Symbol Interference (ISI)/ISI Scaling .....	98
About Pre/De-Emphasis .....	100
About Pulse Amplitude Modulation (PAM) .....	102
About Pulse Width Modulation (PWM) .....	102
DPOJet Settings .....	104
Noise .....	106
Generate Common Mode Noise .....	107
Generate Inter-Channel Skew .....	108
Periodic Jitter - Sample Test Results .....	108
Main Menu Default States .....	109
Default Values .....	111

## Index





## Welcome

The SerialXpress software is designed to work with the following Tektronix arbitrary waveform generators:

- AWG70000A Series arbitrary waveform generator (firmware V3.0 and above).
- AWG7000C series arbitrary waveform generators.
  - AWG7000 and AWG7000B series arbitrary waveform generators have not been fully tested with SerialXpress version 4.0 and above. SerialXpress version 3.3 is recommended for these products.
- AWG5000C series arbitrary waveform generators.
  - AWG5000 and AWG5000B series arbitrary waveform generators have not been fully tested with SerialXpress version 4.0 and above. SerialXpress version 3.3 is recommended for these products.

This software can be run in several ways.

- SerialXpress Installed on a PC and connected to an AWG70000A Series arbitrary waveform generator via a LAN connection.

See the section [AWG70000A Series configuration utility \(see page 4.\)](#) to prepare SerialXpress for use with an AWG70000A Series arbitrary waveform generator.
- An integral part of an AWG5000C or AWG7000C series arbitrary waveform generators (SerialXpress installed on the AWG).
- As a standalone product installed on a PC.

## Free Trial

SerialXpress supports **Option SSC** that enables SSC parameters and **Option ISI** that enables ISI options. You can transfer or save the data for ten trials. When the trial expires, you cannot transfer or save the waveform unless you enable the function with an option (license) key.

For more details, refer to [Option Installation \(see page 31\)](#).

## Related Documentation

In addition to this SerialXpress Online Help, the following documentation is included with the software:

- *SerialXpress Installation Manual* (Tektronix part number 077-0049-xx). The installation manual has information about installing and upgrading the software.
- *SerialXpress User Manual* (Tektronix part number 077-0050-xx). The user manual is adapted from the online help and is available in PDF format.
- *SerialXpress Quick Start User Manual* (Tektronix part number 077-0064-xx). The quick start user manual has information about using the software and application examples.
- *SerialXpress Programmer Online help* (Tektronix part number 076-0166-xx). The programmer online help has information on how to use commands for remotely controlling your instrument.
- *SerialXpress Programmer Manual* (Tektronix part number 077-0144-xx). The programmer manual is adapted from the programmer online help and is available in PDF format.

## Conventions

The online help uses the following conventions:

- When steps require a sequence of selections using the software interface, the ">" delimiter marks each transition between a menu and an option. For example, **File > Save**.
- DUT refers to the Device Under Test.
- The terms "waveform" and "signal" are used interchangeably.
- The term AWG refers to a Tektronix Arbitrary Waveform Generator.

## Feedback

Tektronix, Inc.

14200 SW Karl Braun Drive

P.O. Box 500

Beaverton, OR 97077

USA

For product information, sales, service, and technical support:

- In North America, call 1-800-833-9200.
- Worldwide, visit [www.tektronix.com](http://www.tektronix.com) to find contacts in your area.

## Minimum System Requirements

The minimum requirements of the SerialXpress application are listed in the following table:

**Table 1: Minimum system requirements**

<b>Supported OS</b>	Windows 7 Professional
<b>Minimum Requirements</b>	2.0 GHz or higher 1 GB RAM 2 GB free disk space 1024 x 768 display resolution with 120 dpi font size

### Prerequisites

TekVisa version 4.0.0.80 or above to communicate with the AWG70000A Series signal generators (or other test instruments), over a LAN. If TekVisa is not already installed in your system, you can install it from the SerialXpress application DVD or download the software from [www.tektronix.com/software](http://www.tektronix.com/software)

## Ordering SerialXpress

SerialXpress can be ordered as follows:

**Table 2: Ordering SerialXpress**

<b>Software packages and options</b>	<b>Description</b>
SDX100	Jitter generation software package for AWG (includes option key).
Option ISI	S-Parameter and ISI creation option (requires SDX100 as prerequisite).
Option SSC	Spread Spectrum Clock addition option (requires SDX100 as prerequisite).
SDXUP	Base Software upgrade for SDX100.
Option ISI	Upgrade to include S-Parameter and ISI creation option for SDX100.
Option SSC	Upgrade to include Spread Spectrum Clock option for SDX100.

## Installation

An installation wizard installs SerialXpress. If you have not installed MATLAB Runtime version and .NET 4.0, the installer will detect and install it. You can install SerialXpress from the application CD Browser. You can also install TekVISA from the CD Browser. You can cancel the installation any time during the process.

---

**NOTE.** You can download the TekVISA software from [www.tektronix.com/software](http://www.tektronix.com/software). You can also install TekVISA from the path \TekVISA on the application CD.

---

For details on how to install the application, refer to the *SerialXpress Installation Manual* (Tektronix part number 077-0049-XX) available as a PDF on the CD-ROM.

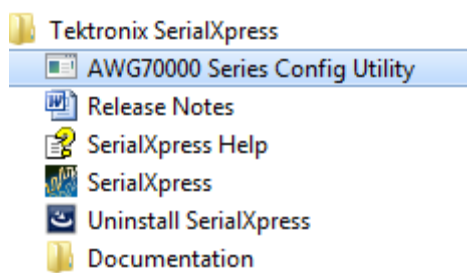
You can uninstall in either of these two ways:

- From **Start > All Programs > Tektronix SerialXpress > Uninstall SerialXpress**.
- From Add/Remove programs in Control panel.

## AWG70000 Series configuration utility

To use SerialXpress with an AWG70000 Series arbitrary waveform generator, you must run the AWG70000 Configuration Utility. This should be done before starting SerialXpress. The utility only needs to be run once to provide SerialXpress with the AWG70000 Series model and its options. SerialXpress stores these setting for all subsequent starts of SerialXpress.

The configuration utility is located in the Tektronix SerialXpress Program folder.

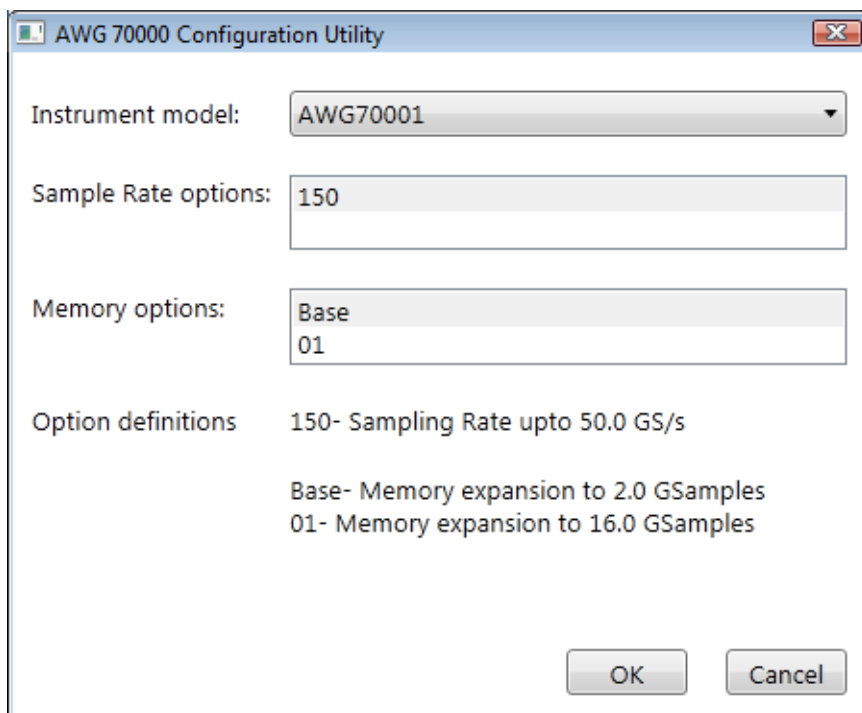


When the configuration utility starts, simply enter your AWG70000 Series model number and its options. This information provides SerialXpress with the information to properly adjust variables (such as sampling rate and waveform length) to accommodate the features of the AWG70000 Series generators.

---

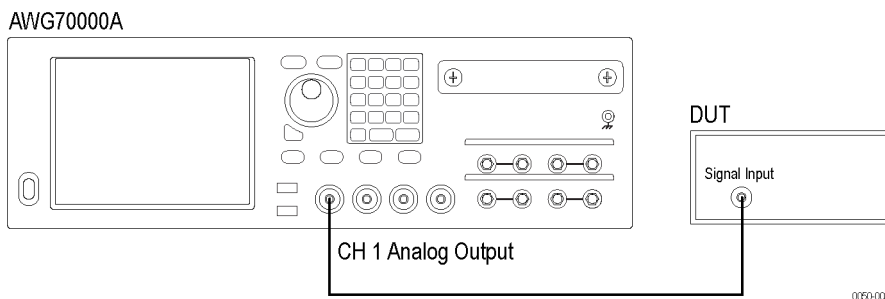
**NOTE.** All instrument information entered here must match your AWG70000 Series instrument exactly, including all options. Any mismatch of information will cause an error when attempting to connect to the instrument.

---



## Setup for Base Data Signal Generation (AWG70000A)

1. Start SerialXpress installed on the PC.
2. From the toolbar, select the signal type.
3. Make connections as shown in the figure:
  - Connect the AWG Ch 1 Analog Output to the DUT where the signal must be fed.



4. Click Compile. The waveform is compiled according to the default settings in the Compile Settings window. The compiled waveform is displayed in the Waveform List. If the Compile Button Preferences is set to Compile and Send, this waveform is transferred to the AWG channel (Ch1) and is also seen in the Instrument Control > AWG tab.

---

**NOTE.** *The default setting for the Compile Button Preferences is to compile only. If you want to compile and automatically send the waveform to the AWG, you need to change the Compile Button Preferences. See [Compile Settings \(see page 25\)](#).*

---

5. Use the AWG70000A controls to turn the channel on or off and run (output) the signal.

For more details, refer to [Calibration for Base Pattern Signals \(see page 51\)](#) and [Find Instruments \(see page 23\)](#).

## Setup for Base Data Signal Generation (AWG5000 and AWG7000)

1. Start the SerialXpress installed on the Arbitrary Waveform Generator (AWG).
2. Select the **Standard** and **Pattern** type from the **Base Pattern** tab.
3. Connect the AWG Ch1 Analog Output to the DUT where the base data waveform must be fed.
4. Click **Compile** in the toolbar. The waveform is compiled according to the default settings in the **Compile Settings** dialog box. The compiled waveform is displayed in the Waveform List. This waveform will be transferred to the AWG channel (Ch1) and can also be seen in the **Instrument Control > AWG** tab.
5. Click **On/Off** to turn on Ch1.
6. Click **Run** to generate the waveform on the AWG.

For more details, refer to [Calibration for Base Pattern Signals \(see page 51\)](#) and [Find Instruments \(see page 23\)](#).

## About Basic Operations

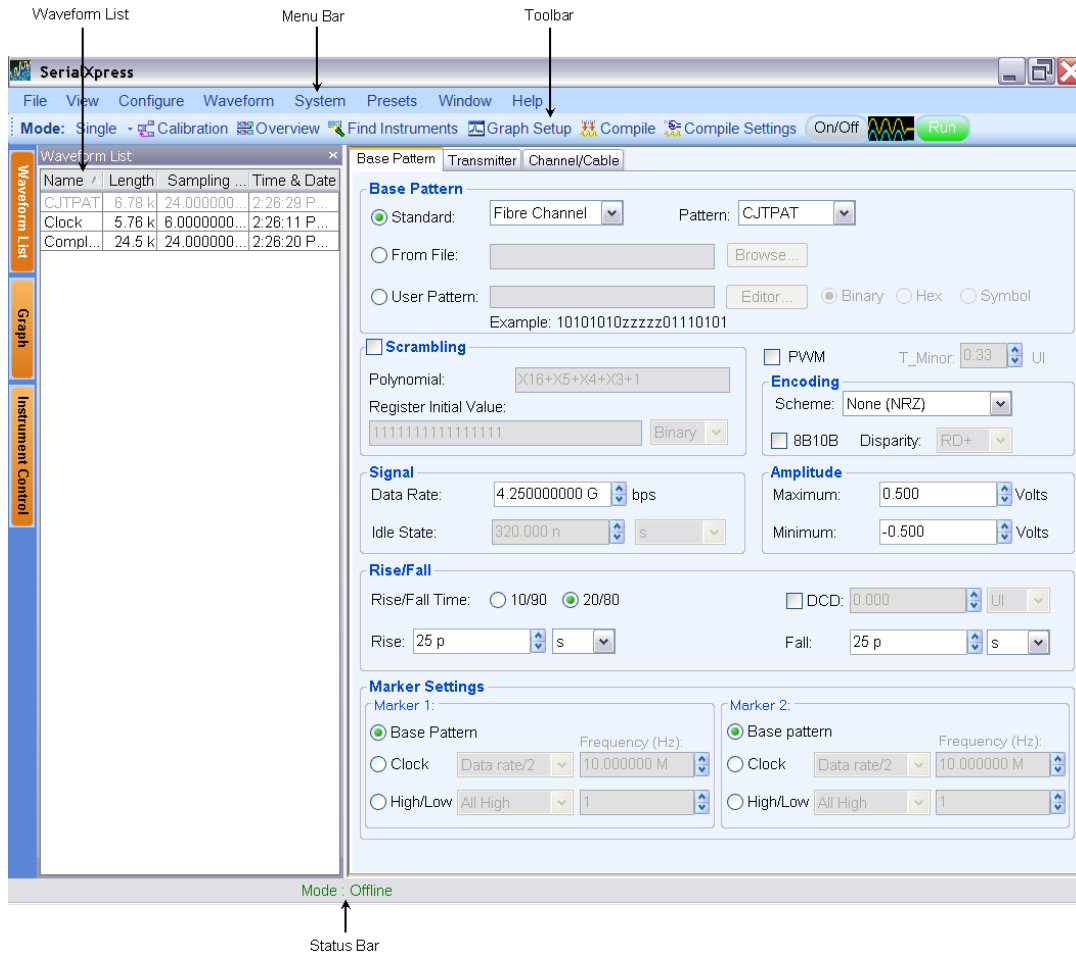
The basic operations section describes the application, tells how to start the application, use the menus and toolbars, and describes the dialog boxes.

In this online help, all menu selections are indicated with Menu name and Menu options separated by “>”. You can access a command or a menu option in more than one way. Several main menu options are available in a toolbar that you can use instead of selecting the option from the main menu. Shortcut menus, which open with a right-click, are provided for renaming, deleting waveforms, showing graphs, saving data, importing data from a Tektronix oscilloscope, and transferring a waveform to an AWG.

Some dialog boxes also have a **Help** button that displays help for that dialog box.

Detailed operations and parameters are described in the sections on Base Pattern, Transmitter, and Channel/Cable. The Reference section lists Error Messages, Shortcut Keys, Default states/values, Table of Measurements, and additional information on Calibration, Interleave, Noise, Pseudo Random Binary Sequence (PRBS), Spread Spectrum Clocking (SSC), Wrap between sequence elements, Inter Symbol Interference (ISI), and so on.

The following figure shows the SerialXpress screen, the menu, the toolbar, and other elements of the display.





## Overview of the Software

SerialXpress is a tool for the high speed serial data industry that takes an input pattern and creates pre-distorted waveforms to test a device's conformance to SATA, SAS, Display Port, Fiber Channel, USB, MIPI, and PCI-Express standards.

### Key Features

- **Jitter Generation:** Up to four different sinusoidal jitters with different amplitudes, frequencies and phases can be added to a base pattern. Three independent band-limited random jitters can also be added to the base pattern.
- **SSC Addition:** SSC can be added with precisely controlled profile, spread, deviation, modulation, and df/dt.
- **Advanced Pre/De-emphasis and Noise:** Many standards such as PCI-E require the output waveform to be pre/de-emphasized. SerialXpress allows easy addition of pre/de-emphasis including preshoot with all other jitter parameters. Vertical noise can be added at both near and far ends of the channel. This can also be set to either full band Gaussian noise or to a sinusoidal noise at a particular frequency.
- **Inter Symbol Interference (ISI) Creation:** SerialXpress allows you to create ISI either by entering it directly or from an S-parameter file captured either from a Tektronix sampling oscilloscope or a Vector Network Analyzer. The S-parameter can be directly convolved with the base pattern to recreate the channel characteristics. By applying an inverse filter, the effects of the channel can be de-embedded from the circuit. The ISI within the S-parameter can be scaled upward or downward easily altering the characteristics of the channel.
- **Base Pattern:** SerialXpress is bundled with several sample patterns for various standards like SATA, Display Port, SAS, PCI-E, Fiber Channel, MIPI, and USB. Patterns can also be directly entered in a Binary, Hex, or Symbol editor, or loaded from a file.
- **Idle State:** Standards like SATA call for OOB signaling which requires an idle state followed by a burst. You can directly create this idle state without using additional power dividers. Noise can also be added to these idle state waveforms.
- **Calibration:** SerialXpress has a built-in calibration routine, which controls a Tektronix oscilloscope and calibrates the output of a Tektronix arbitrary waveform generator (AWG) for periodic jitter and random jitter.
- **Bandwidth expansion filter:** The bandwidth of an AWG can be expanded further by applying the bandwidth expansion filter which compensates for DAC roll-off. For example, when used with an AWG7122B with option 06, the bandwidth expansion filter compensates for the DAC roll-off at higher frequencies, thereby extending the bandwidth up to 9.6 GHz. This helps in improving the rise time.
- **Batch Processing:** When more than one pattern needs to be synthesized, you can use batch processing to create multiple waveforms with a combination of random and sinusoidal jitter with a maximum of four different frequencies.
- **Overview Window:** All jitter parameters can be switched on or switched off from the overview window.

- **Cascading S-Parameters:** SerialXpress allows you to cascade up to six Touchstone files of the same format to emulate a cascaded channel.
- **Sequencing:** SerialXpress supports sequencing of several base pattern types. You can specify several base pattern files, add different types of jitter to each base pattern, and compile them simultaneously. These waveforms are automatically transferred to the AWG sequencer at the end of compilation.
- **Presets:** SerialXpress provides pre-created setup files for standards such as SATA, USB 3.0, DisplayPort, and HDMI. Selecting a preset loads the appropriate setup into SerialXpress.
- **Marker outputs:** Marker outputs can be configured to be the same as the input base pattern or to generate clocks at a user-defined frequency. You can also set the marker output to all high, all low, or trigger.
- **Pre/de-emphasis and Preshoot:** Standards like PCIE, 10 GbE, SAS, and USB 3.0 need more than one tap for Pre/De-emphasis signal generation. The advanced Pre/de-emphasis feature of SerialXpress provides flexibility to program the Pre/De-emphasis and Preshoot sample by sample. The preview feature facilitates you to arrive at the most optimized Pre/de-emphasis for a particular channel quickly.
- **Crest Factor Emulation:** SerialXpress allows you to apply peak pseudo random jitter to a bit pattern and reduce your test time. The test cases can be repeated accurately so that the receiver can be debugged quickly. SerialXpress allows you to accurately control the crest factor of the random jitter to produce a worst case signal to stress the receiver.
- **Delay:** SerialXpress allows you to introduce a delay into the waveform which can be used to generate skew between channels or patterns.
- **Scrambling and 8B10B encoding:** The input data pattern can be scrambled by defining a polynomial. You can also encode using the 8B10B encoding option.
- **NRZ, NRZI, 4-PAM, and PWM:** SerialXpress allows you to define the pattern duty cycle using the Pulse Width Modulation (PWM), and alternatively encode the bit stream to 4-PAM, NRZ, or NRZI.

## Starting the Software

From the Start menu, click **All Programs > Tektronix SerialXpress > SerialXpress**. You can also double-click the **SerialXpress** shortcut on the desktop.

Use the SerialXpress application in the following modes:

- With AWG70000A Series instruments. SerialXpress is installed on a PC and connected to an AWG70000A Series instrument via a LAN connection and the TekVISA communication software.

Run the SerialXpress AWG70000A Configuration Utility one time to use SerialXpress with an AWG70000A Series instrument. The status bar shows **AWG70XXX Offline**.

- SerialXpress on any AWG5000 or AWG7000 series instrument. In this case, the SerialXpress automatically detects the AWG software. You can transfer data directly to the AWG software.
- When SerialXpress is started on the PC without the AWG software running, SerialXpress does not detect the AWG software. In this case, you cannot transfer data to the AWG (although you can create and store the waveform for later use).

---

**NOTE.** *The AWG5000 or AWG7000 software refers to the AWG memory manager and AWG Virtual GPIB parser executables. The AWG user interface application and other executables are not necessary but they may also be running.*

---

## Exiting the Software

Select **File > Exit** to exit the application. If you have not saved the waveforms, you are prompted to do so. This option is always enabled.

## File Name Extensions and Directories

The application uses the following file name extensions:

**Table 3: File name extensions**

File name extension	Description
.csv	Ascii file containing Comma Separated Values. This file format may be read by any ascii text editor (such as Microsoft Notepad) or may be imported into spreadsheets such as Microsoft Excel.
.sxs	XML (Extensible Markup Language) file containing setup information for creating a waveform.
.wfm	Binary file containing an AWG waveform record in a recallable, proprietary format.
.sxd	Binary file containing an AWG waveform record in a recallable, proprietary format.
.sxc	Custom format binary file containing the calibration related information.
.flt	Files containing the inverse filter co-efficient.
.s1p	Files that define 1-port, 2-port, 4-port, and 8-port S-Parameters.
.s2p	
.s4p	
.s8p	

The application uses the following directories:

**Table 4: Directory names**

Directory	Description
<Application installation path>\Tektronix\SerialXpress\System	Contains the software executables, DLL files, sample patterns, and Touchstone files.
<Application installation path>\Tektronix\SerialXpress\Documentation	Contains the related documentation as text and PDF files.
<Application installation path>\Tektronix\SerialXpress\Samples	Contains sample waveform files.
<Application installation path>\Tektronix\SerialXpress\Samples\SATA	Contains sample base data files for patterns such as MFTP, HFTP, and others in .txt format.
<Application installation path>\Tektronix\SerialXpress\Samples\SAS	Contains sample base data files for patterns such as JTPAT +ve disparity, JTPAT -ve disparity, and others in .txt format.
<Application installation path>\Tektronix\SerialXpress\Samples\HDMI	Contains sample base data files for patterns such as 480p 8 59 Gray RGB, 720p 8 60 Gray RGB, and others in .txt format.

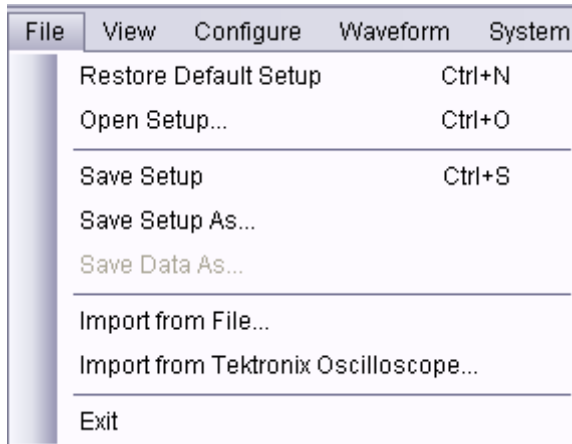
**Table 4: Directory names (cont.)**

Directory	Description
<Application installation path>\Tektronix\SerialXpress\Samples\DisplayPort	Contains sample base data files for patterns such as DP Training sequence2 960, CJTPAT, and others in .txt format.
<Application installation path>\Tektronix\SerialXpress\Samples\PCI-Express	Contains sample base data files for patterns such as Compliance Pat and Clock in .txt format.
<Application installation path>\Tektronix\SerialXpress\Samples\Fiber Channel	Contains sample base data files for patterns such as CJTPAT, JTPAT, and others in .txt format.
<Application installation path>\Tektronix\SerialXpress\Samples\General	Contains sample base data files for patterns such as Clock, PRBS7, and others in .txt format.
<Application installation path>\Tektronix\SerialXpress\Samples\USB	Contains sample base data files for patterns such as CP0, MinAdd1N, MinAdd1P, and others in .txt format.
<Application installation path>\Tektronix\SerialXpress\Samples\User Defined	This folder is empty. You can store the sample files that you define in this folder.
<Application installation path>\Tektronix\SerialXpress\Samples\Touchstone	Contains sample Touchstone files used with the S-Parameter Filter.
<Application installation path>\Tektronix\SerialXpress\Samples\Preset	Contains preset files for standards such as SATA, USB, HDMI, and DisplayPort in .sxs format.

## Menu Bar

The SerialXpress menu has the following items:

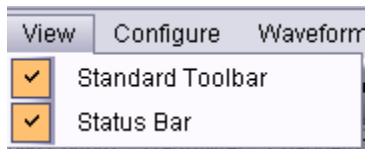
■ File



Use the File menu to:

- Restore the default setup for the current active parameters.
- Open a saved setup. The supported file is in **.sxs** format.
- Save a setup in the **.sxs** format.
- Save a setup under another name in the **.sxs** format.
- Save data in **.wfm** format.
- Import from file. The supported file is in **DTG** (Data Timing Generator) format.
- Import data from a Tektronix oscilloscope.
- Exit the application.

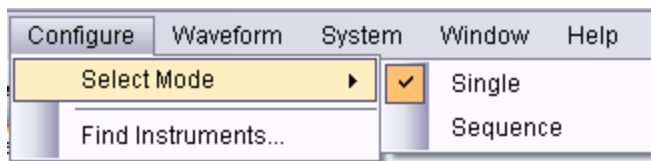
## ■ View



Use the View menu to:

- View or hide the toolbar. If the toolbar is hidden before closing the application, it remains hidden when the application is opened again.
- View or hide the status bar. If the status bar is hidden before closing the application, it remains hidden when the application is opened again.

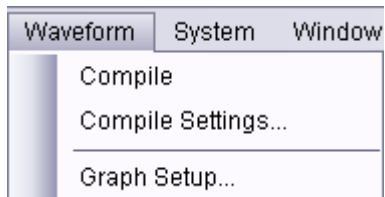
## ■ Configure



Use the Configure menu to:

- Select the mode: Single or Sequence.
- Find instruments that are connected on the network.

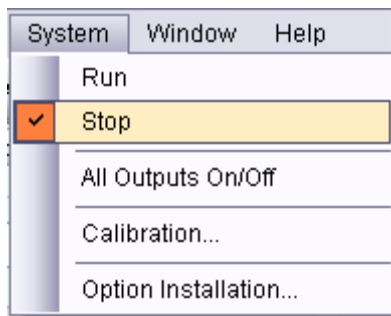
## ■ Waveform



Use the Waveform menu to:

- Compile a new waveform file based on current settings.
- Open the Compile Settings dialog box and define the compile options.
- Open the Graph Setup dialog box and define the graph setup.

### ■ System



Use the System menu to:

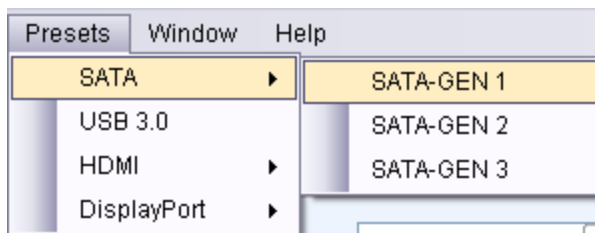
- Set the AWG run mode to on. (AWG5000 and AWG7000 Series only)
- Set the AWG run mode to off. (AWG5000 and AWG7000 Series only)
- Turn all the channel outputs to on or off on the AWG. (AWG5000 and AWG7000 Series only)
- Open the Calibration dialog box and set the parameters to calibrate the waveform.
- Open the Option Installation dialog box and enable the function with an option (license) key.

---

**NOTE.** All these menu items except **Option Installation** are enabled when AWG software is running along with SerialXpress. (AWG5000 and AWG7000 Series only)

---

### ■ Preset



Use the Preset menu to:

- Load preset files for standards such as SATA, USB, HDMI, and DisplayPort.

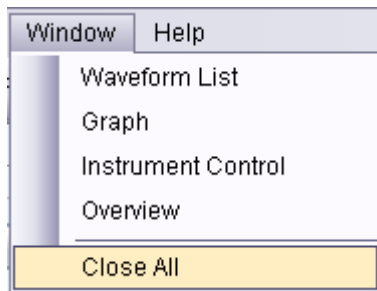
---

**NOTE.** Presets are pre-created SerialXpress setup files for a standard.

---



## ■ Window



Use the Window menu to:

- View or hide the waveform list.
- View or hide the graph window.
- View or hide the instrument control window.
- Open the Overview window.
- Close all windows.

## ■ Help



Use the Help menu to:

- Open the online help.
- Display technical support contact information on the Tektronix Web site.
- Display information about the application, such as version number.

## Standard Toolbar

Select **View > Standard** toolbar to hide or show the toolbar. The toolbar is always displayed by default.



The Standard toolbar has the following options:

- [Mode \(see page 20\)](#)
- [Calibration \(see page 20\)](#)

- [Overview \(see page 22\)](#)
- [Find Instruments \(see page 23\)](#)
- [Graph Setup \(see page 23\)](#)
- [Compile \(see page 25\)](#)
- [Compile Settings \(see page 25\)](#)
- [On/Off \(see page 28\)](#)
- [Run \(see page 28\)](#)

## Status Bar

Select **View > Status Bar** to hide or show the status bar. The status bar shows the selected application and the AWG mode. The status bar is always displayed by default.

## Waveform List

Select **Window > Waveform List** to view the waveform list. Waveform list is a floating window that displays a list of all the waveforms. It can be moved anywhere in the display area. By default it is always displayed and opens in the leftmost area of the display window.

After you select a pattern to generate and set the parameters for it, you must compile it to create the data. Once you compile a waveform (using **Compile** from the toolbar), waveform data is created and added to the waveform list. The Waveform list displays the Name, Length, Sampling Rate, and Time and Date of the waveform data.

To save a waveform that is available in the list, select the waveform and select **File > Save Data As**. The compiled waveform is saved as a data file (**wfm**) in the specified location. If there is no data to save, then the **Save Data As** option is disabled.

---

**NOTE.** *If you close the application without saving the compiled waveform, the waveform is lost. You can compile the waveform again from the setup, if you have saved the setup using **File > Save Setup** or **Save Setup As**.*

---

You can select the following options from the shortcut menu:

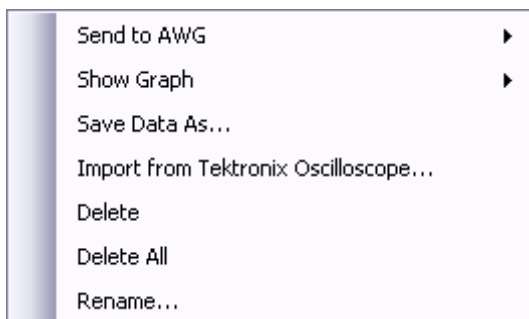


Table 5: Shortcut menu options and descriptions

Selection	Description
Send to AWG	Enabled only if the SerialXpress is connected to an AWG instrument and when a waveform is selected. Sends the selected waveform data to a Tektronix AWG. Select the channel to which to send the data. The number of channels and their state in the list depends on the model of AWG and its current settings.
Show Graph	Enabled only when a waveform is selected. You can select Simulated Data Signal, Normal Eye, and Eye DPO graphs from this option.
Save Data As	Enabled only when a waveform is selected. Saves the selected waveform data as a wfm file under the specified name and location.
<a href="#">Import from Tektronix Oscilloscope (see page 33)</a>	Imports data from a Tektronix oscilloscope that is connected to the instrument or PC on which the application is running.
Delete All	Enabled only when one or more waveforms are available in the Waveform List. Deletes all the waveforms shown in the waveform list permanently.
Delete	Enabled only when a waveform is selected. Deletes the selected waveform permanently.
Rename	Enabled only when a waveform is selected. Opens a dialog box that allows you to enter a waveform name. When a waveform name already exists, an error message is displayed.  <b>NOTE.</b> All the properties of the waveform remain the same except the waveform name.

You can select multiple contiguous and non-contiguous waveforms using the **Shift** and **Ctrl** keys, respectively. When you select multiple waveforms in the waveform list, the **Show Graph**, **Save Data As**, and **Rename** options are disabled. Selecting multiple waveforms and the **Delete** option deletes all the selected waveforms.

## Mode

Click **Configure > Select Mode** in the toolbar to select the SerialXpress mode. This option is always enabled.

SerialXpress operates in two modes: Single and Sequence. By default, Single mode is selected.

In the Single mode, you can select a set of patterns and compile jittered waveforms using these patterns. However, each of these waveforms are independent. The waveform characteristics, such as disparity, phase of periodic jitter, phase of SSC profile, and others are not carried over from one waveform to the next. When a group of such waveforms are sent to the AWG sequence, the output of the AWG will have wrong disparity and might have discontinuity in waveform or periodic jitter at the boundaries of the waveform.

In the Sequence mode, you can define the sequence before creating the waveform. It creates waveforms in the same order as defined in the sequence table with the required waveform characteristics carried over from one waveform to the next. The set of waveforms is then transferred to the AWG sequence. This eliminates the effects of discontinuity between waveforms.

For more details, refer to [Sequencing \(see page 54\)](#).

## Calibration

Click **System > Calibration** or **Calibration** in the toolbar to calibrate the waveform. This option is always enabled. You can calibrate parameters like random jitter and periodic jitter.

---

**NOTE.** Calibration is not available in Sequence mode.

---

---

**NOTE.** Update the TekVISA resource manager before performing calibration. Only DPO70000 and DSO70000 series oscilloscopes are listed.

---

You must select a base data file, and set the data rate and sampling rate for calibration.

Parameters such as data rate, base data file, sampling rate, and rise/fall time should not be changed. If you change any of these parameters, you must recalibrate the setup.

You can save the calibration data as an **sxc** file.

A table displays a list of instruments on the network. The instrument model, status, connection type, and name are shown but they are not editable. The following buttons are available:

**Table 6: Instrument setup buttons and their description**

Button	Description
Connect	Connects to the instrument selected in the table and updates the status to Connected in the table.
Disconnect	Disconnects the instrument selected in the table and updates the status in the table.
Test Connection	Returns the current status of the selected instrument in the table and displays the status as Connected (in green) or Not Connected (in red).
Calibrate	Starts calibration. The calibration status is displayed at the bottom of the dialog box.

Click **OK** to apply the calibration data with “**Apply calibration**” option enabled in the **Calibration Setup** dialog box. Click **Cancel** to abort calibration.

The Calibration Settings are as follows. All the calibration settings that are set in SerialXpress are updated on the connected instrument.

**Table 7: Calibration setup options and their description**

Selection	Description
DPOJet Settings	Selecting Automatic sets up the DPOJet application on the connected oscilloscope in the most optimal way. This is useful for the simplest of calibrations. Select Manual to set up DPOJet application manually. For more details, refer to <a href="#">DPOJet Settings. (see page 104)</a> .
Save	Saves the calibration setup file as an sxc file. You can also select the path where the file is saved.
Load	Loads a previously saved sxc file and displays the values in the fields.
Apply calibration	Enables calibration. When disabled, calibration data will not be applied. You have to either load the calibration file from disk using the "Load" option or recalibrate the application.
Enable SPC calibration on oscilloscope	Enables SPC calibration on the connected oscilloscope.
Enable AWG channel calibration	Enables AWG channel calibration.

The status of calibration process is shown at the bottom of **Calibration** dialog box.

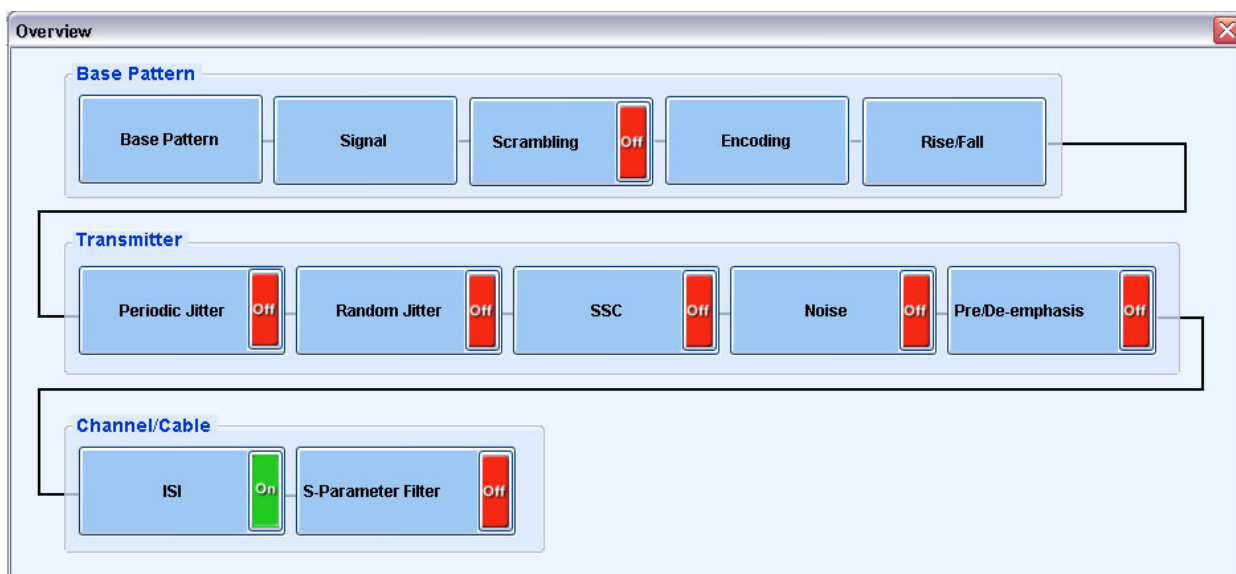
Click **Calibrate** to start the calibration process.

At the end of the process, save the calibration data in a file specified in the file path. You can use **Browse** to select a previously saved calibration file. Click **OK** for the changes to take effect without recalibrating.

## Overview

Click **Window > Overview** to display the overview window. A block view of the active waveform settings appears in a new window. This window is a floating window and can be moved around the screen. Each larger group in the diagram corresponds to a tab. This option is always enabled.

The Overview window has the following blocks:



The On/Off button to the right of each block corresponds to the check box for the group on the settings tab. When the button is Off, the previous settings are retained but not used for Compile operation.

- If the group does not have a check box, then On/Off buttons are not displayed on the block.
- If the check box is disabled, the button text is Off (red).
- If the check box is enabled, the button is On (green). The button on the block and the check box in the group box are linked—if you change one, the change is reflected in the other.

For **Periodic Jitter**, if any of the periodic jitter parameters are selected in the **Base Pattern** tab, then the corresponding button is On in the **Overview** dialog box.

When you click any block in the **Overview** dialog box, the corresponding parameter is highlighted in the application and the **Overview** dialog box closes.

## Find Instruments

Click **Configure > Find Instruments** to view the find instruments window. You can find instruments on the network and connect to them. This option is always enabled.

**Table 8: Find instruments options and their description**

Button	Description
Connect	Connect to the instrument selected in the table. Connect is enabled by default if an instrument is highlighted in the table; disabled if no instrument is highlighted.
Disconnect	Disconnect the connected instrument. Enabled only if highlighted instrument is connected.
Refresh	Refresh the list of instruments.
<a href="#">Import (see page 33)</a>	Open the Import from Tektronix Oscilloscope dialog box to select a file to import.

When the find instrument dialog box appears, the search for the instrument begins; the Connect button is enabled after the search is complete.

Click **Connect** to connect to the selected instrument. The Status provides the current status during the refresh operation: Searching Instruments or Ready.

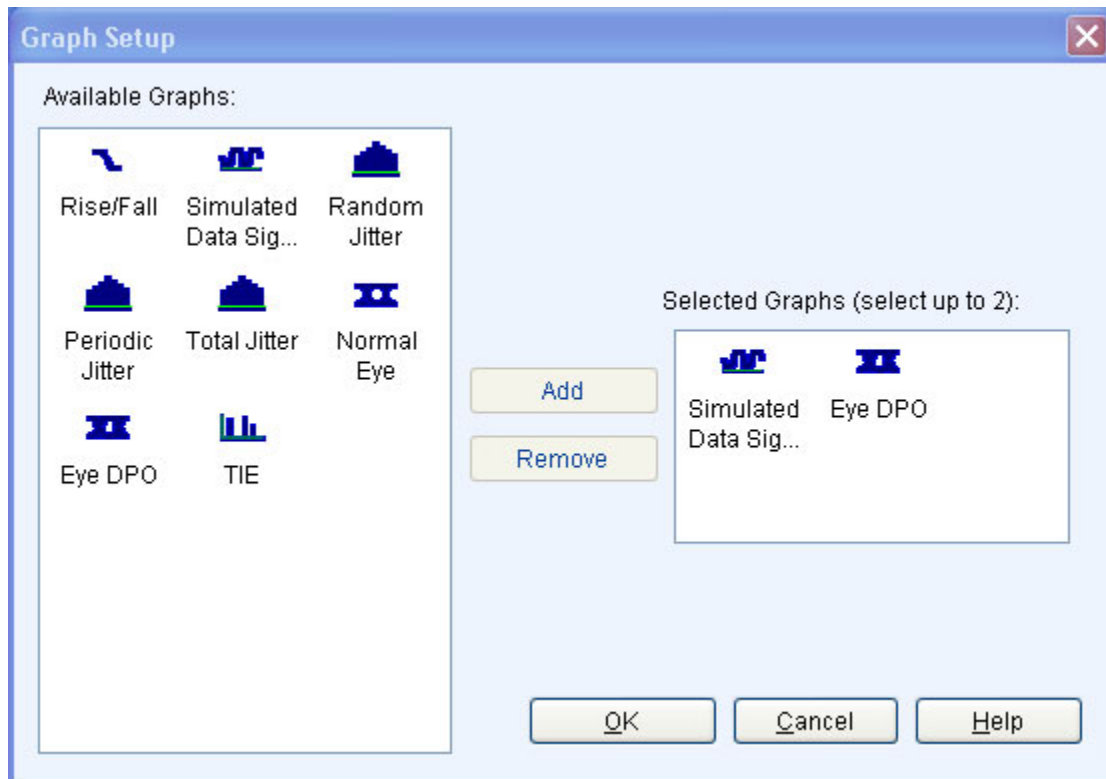
## Graph Setup

Click **Waveform > Graph Setup** to view the graph setup window. This option is always enabled.

Graphs are created and updated as part of the Compile operation. You can display any two plots at a time. The plots cannot be edited or saved. If you change any of the parameter values, you must compile again to display the changes in the plot. You can maximize one plot at a time and zoom a selected area of interest.

The application allows you to select the types of graphs before creating them. The graphs are displayed as a set in a small window (for preview). At any time, a maximum of two graphs can be displayed in the small view.

To specify the graphs to create, click **Graph Setup** in the toolbar or **Waveform > Graph Setup** from the menu bar. The Graph Setup dialog box opens.



Follow these steps to select the graphs to create:

- Highlight a graph from **Available Graphs**. Click **Add** to add the graph to the **Selected Graphs** area or drag and drop the graph to the Selected Graphs area.

You can select the plots to display. SerialXpress supports the following plots:

- [Rise/Fall \(see page 78\)](#)
- [Simulated Data Signal \(see page 79\)](#)
- [Random Jitter \(see page 80\)](#)
- [Periodic Jitter \(see page 81\)](#)
- [Total Jitter \(see page 82\)](#)
- [Normal Eye \(see page 83\)](#)
- [Eye DPO \(see page 84\)](#)
- [TIE \(see page 85\)](#)

---

**NOTE.** By default, **Simulated Data Signal** and **Eye DPO** are selected. Once two graphs are added to **Selected Graphs**, the application will not allow you to add any more graphs. You must remove a graph before you can add another graph.

---



To remove a graph, highlight a graph in **Selected Graphs** and click **Remove** in the **Graph Setup** dialog box or **Delete** on the keyboard.

- Click **OK** to view the graphs. The graphs are displayed in the **Graph** tab.

## Compile

Click **Waveform > Compile** to compile a currently active waveform.

The waveform is compiled and displayed in the Waveform List. You can save the waveform data as a wfm file using the [Waveform List \(see page 18\)](#) shortcut menu. This option is not enabled when compilation is in progress.

## Compile Settings

Click **Waveform > Compile Settings** to specify compilation settings for the currently active waveform setup. This option is always enabled. This dialog box is displayed.

**Compile Settings**

Waveform Name:

Data Rate: 1.000000000 Gbps = ☐ Sampling Rate:  G S/s ☒ Automatic  
☒ Samples per UI:

Delay:  ns ☒ Wrap between sequence elements

**Compile Button Preferences**

☒ Compiles and Sends To    
☐ Compiles Only

**Repeat**

☒ Automatic  
☐ Manual

☐ **Bandwidth Expansion Filter**

☒ Interleave Off  
☐ Interleave without Zeroing  
☐ Interleave with Zeroing

☐ Batch Compile

☒ Show Graph after Compile  
☒ Overwrite Waveform in SerialXpress List

**Table 9: Compile settings options and their description**

Selection	Description
Waveform Name	<p>Enter the waveform name.</p> <p>The waveform name is same as the pattern selected, except for patterns such as <b>User Defined</b>. You can change the waveform name either in the <b>Compile Settings</b> dialog box or by using <b>Rename</b> option from the waveform list shortcut menu.</p>
Data Rate	This option is not editable. The data rate is equal to the ratio of Sampling Rate and Samples per UI.
Sampling Rate	Enter the sampling rate (in S/s) of the waveform to compile.
Samples per UI	Enter the samples per UI of the waveform to compile.
<b>NOTE.</b> If you change the sampling rate or samples per UI value, the rise/fall time values also changes.	
Automatic	<p>Enable this to calculate the sampling rate. By default, this is enabled. When disabled, you can change the sampling rate or samples per UI.</p> <p>In the offline mode, the sampling rate of the waveform (for AWG7122B) is 24 GS/s. In the online mode, the sampling rate of the waveform depends on the maximum sampling rate of the instrument.</p> <p>The minimum and maximum values of samples per UI are 2 and 240 respectively. When the value of samples per UI is out of range, the sampling rate is automatically adjusted to achieve the specified data rate.</p>
Delay	<p>Specify the delay (in UI). This value is used to produce a horizontal shift of the output signal by rotating the waveform data.</p> <p>In the Sequence mode, this option is available only when <b>Wrap between sequence elements</b> is disabled.</p>
Wrap between sequence elements	<p>Select this to enable wrap-around for all the sequence elements.</p> <p>When this option is disabled, the continuity of waveforms is not ensured and the number of waveforms is equal to the number of patterns.</p> <p><a href="#">Wrap between sequence elements (see page 97)</a> ensures continuity of the waveform sample when the sequence execution moves from one sequence element to another. The application may generate multiple waveforms in the AWG corresponding to a single pattern in the SerialXpress.</p>
<b>Compile Button Preferences</b>	
Compiles and Sends To	Select this to compile and send the waveform to the specified channel. By default, Ch1 is selected. This option is enabled only when the SerialXpress is running in the online mode.
Compiles Only	Select this to compile the waveform without sending it to the AWG. The compiled waveform is displayed in the waveform list.

**Table 9: Compile settings options and their description (cont.)**

Selection	Description
<b>Repeat <sup>1</sup></b>	
Automatic	When enabled (default), the repeat is set to automatic. The repeat is calculated based on the Pj, Rj, and SSC frequency values.
Manual	Enable this to manually set the repeat in count or secs. The minimum and maximum values depend on the following parameters: <ul style="list-style-type: none"> <li>■ Input pattern size (that is, total number of bits)</li> <li>■ Current SPUI (Samples Per UI) value</li> </ul> The maximum value is calculated depending on the memory availability. The minimum and default values are calculated depending on the minimum number of samples required by the AWG (960 samples), Pj, Rj, and SSC frequency values.
<b>NOTE.</b> Repeat options are disabled in the Sequence mode.	
<b>Bandwidth Expansion Filter <sup>2</sup></b>	
Interleave Off	Select <b>Bandwidth Expansion Filter</b> to enable this option. This option is available only when the sampling rate is less than 12 GS/s (for AWG7122B and AWG7122C).
Interleave without Zeroing	Select this to apply the bandwidth expansion filter if zeroing is off. This option is available only when the sampling rate is greater than or equal to 12 GS/s (for AWG7122B and AWG7122C).
Interleave with Zeroing	Select this to apply the bandwidth expansion filter if zeroing is on. This option is available only when the sampling rate is greater than or equal to 12 GS/s (for AWG7122B and AWG7122C).
<a href="#">Batch Compile (see page 28)</a>	Select this to activate batch compilation.
Batch Setup	Select this to set the values to be used for batch creation.
Show Graph after Compile	Select this to display the graphs after compilation. The compiled graph is displayed using <b>Graph Setup</b> dialog box. When disabled, no plot is displayed after compilation and the compilation time is reduced.
Overwrite Waveform in SerialXpress List	Select this to overwrite a waveform in the list with the compiled waveform. When disabled, you are prompted that a file of the same name exists.

<sup>1</sup> Repeat determines the number of times the input pattern repeats before generating the waveform. This allows you to determine the optimum waveform size for best results.

<sup>2</sup> The bandwidth expansion filter is used to improve the performance of the AWG when the rise time is very high. For better use of the bandwidth expansion filter, set the rise time to less than 80 ps for AWG7122B and AWG7122C.

---

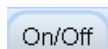
**NOTE.** When *Automatic* option is enabled, the *Sampling Rate* and *Samples per UI* options are disabled.

---

The **Compile and Sends To** and **Compile Only** options are disabled when SerialXpress is in the offline mode. Click **Compile** to compile the waveform. The compiled waveform is displayed in the waveform list.

In the Sequence mode, all the options except for **Waveform Name**, **Delay**, **Overwrite Waveform in SerialXpress List**, **Show Graph after Compile**, **Repeat**, and **Batch Compile** options are disabled.

## On/Off



Click **On/Off** to turn on or turn off the AWG channel output. This option is enabled when SerialXpress is running in the online mode (for AWG7000 and AWG5000 series).

## Run



Click **Run** to turn on or turn off the Run state of the AWG. If the application is running on an AWG or using an offline mode of the AWG software, then the compiled waveform is directly output to the channel and indicated by changing the Run button to green. This option is enabled when SerialXpress is running in the online mode (for AWG7000 and AWG5000 series).

## Batch Process

Click **Batch Setup** from **Compile Settings > Batch Compile > Batch Setup** to set up the batch process. This option is disabled by default.

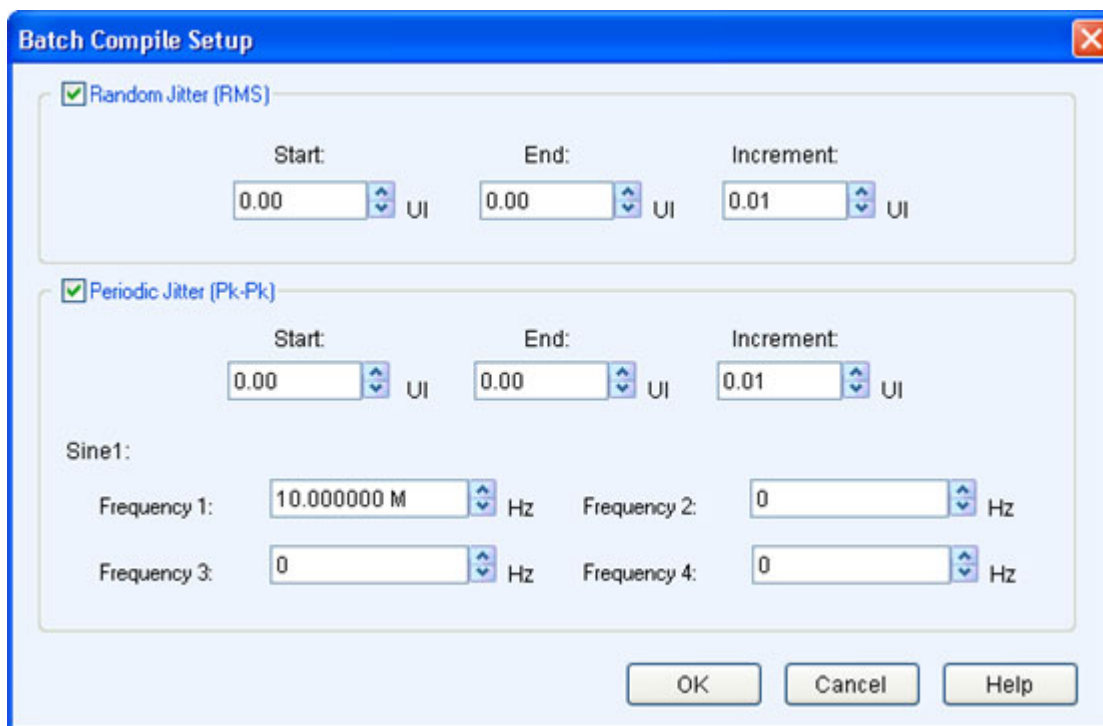
Batch Process creates multiple waveforms with a combination of random jitter and periodic jitter with a maximum of four different frequencies with user-defined parameter increments.

Clicking **Compile** starts batch compilation when **Batch Compile** is enabled. This dialog box is displayed upon clicking **Batch Setup**.

---

**NOTE.** When you navigate the batch compile through *Compile Settings*, the *Waveform Name*, *Compile Button Preferences*, and *Show Graph after Compile* options are disabled.

---



The **Batch Compile Setup** dialog box is shown with the following settings:

- Random Jitter (RMS):** Enabled (checked). Start: 0.00, End: 0.00, Increment: 0.01.
- Periodic Jitter (Pk-Pk):** Enabled (checked). Start: 0.00, End: 0.00, Increment: 0.01.
- Sine1:**
  - Frequency 1: 10.000000 M Hz
  - Frequency 2: 0 Hz
  - Frequency 3: 0 Hz
  - Frequency 4: 0 Hz

Buttons at the bottom: OK, Cancel, Help.

By default, both **Random Jitter** and **Periodic Jitter** are enabled where you can set the values to be used for batch creation. When you disable both the options and click **Compile**, the following error message appears: The parameter values do not generate any waveform.

The following condition occurs when Random Jitter (Rj) and/or Periodic Jitter (Pj) values are same in both the **Batch Setup Compile** dialog box and **Transmitter** tab:

- When either Rj or Pj is disabled in the **Batch Setup Compile** dialog box but enabled in the **Transmitter** tab, the corresponding value set in the **Transmitter** tab is used for compilation.
- When either Rj or Pj is disabled in both **Batch Setup Compile** dialog box and **Transmitter** tab, the value zero is used for compilation.

The following condition occurs when Random and/or Periodic Jitter have different values set in the **Batch Setup Compile** dialog box and **Transmitter** tab:

- When **Batch Compile** is enabled in the **Compile Settings** dialog box, the values set in the **Batch Setup Compile** dialog box are used for compilation.
- When **Batch Compile** is disabled in the **Compile Settings** dialog box, the value set in the **Transmitter** tab is used for compilation.

---

**NOTE.** The **Batch Compile** option is available only for a single file. It cannot be applied when multiple pattern files are selected.

---

**Table 10: Batch Compile Setup options and their description**

Selection	Description	Range, Default value
<b>Random Jitter (RMS)</b>		
Start	Set the random jitter start value (in UI).	0 UI to 0.5 UI, 0 UI
End	Set the random jitter end value (in UI).	0 UI to 0.5 UI, 0 UI
Increment	Set the random jitter increment value (in UI).	0 UI to 0.5 UI, 0.01 UI
<b>Periodic Jitter (Pk-Pk)</b>		
Start	Set the periodic jitter start value (in UI).	0 UI to 50 UI, 0 UI
End	Set the periodic jitter end value (in UI).	0 UI to 50 UI, 0 UI
Increment	Set the periodic jitter increment value (in UI).	0 UI to 0.5 UI, 0.01 UI
<b>Sine 1</b>		
Frequency 1	Set the first periodic jitter frequency (in Hz).	10 kHz to Data rate/2, 10 MHz
Frequency 2	Set the second periodic jitter frequency (in Hz).	10 kHz to Data rate/2, 0 Hz
Frequency 3	Set the third periodic jitter frequency (in Hz).	10 kHz to Data rate/2, 0 Hz
Frequency 4	Set the fourth periodic jitter frequency (in Hz).	10 kHz to Data rate/2, 0 Hz

---

**NOTE.** When the same frequency value is used more than once in the **Periodic Jitter**, only one frequency is used for compilation. If the value zero is set, that frequency is not used for compilation. Only **Sine1 Frequency 1** is used for compilation.

---

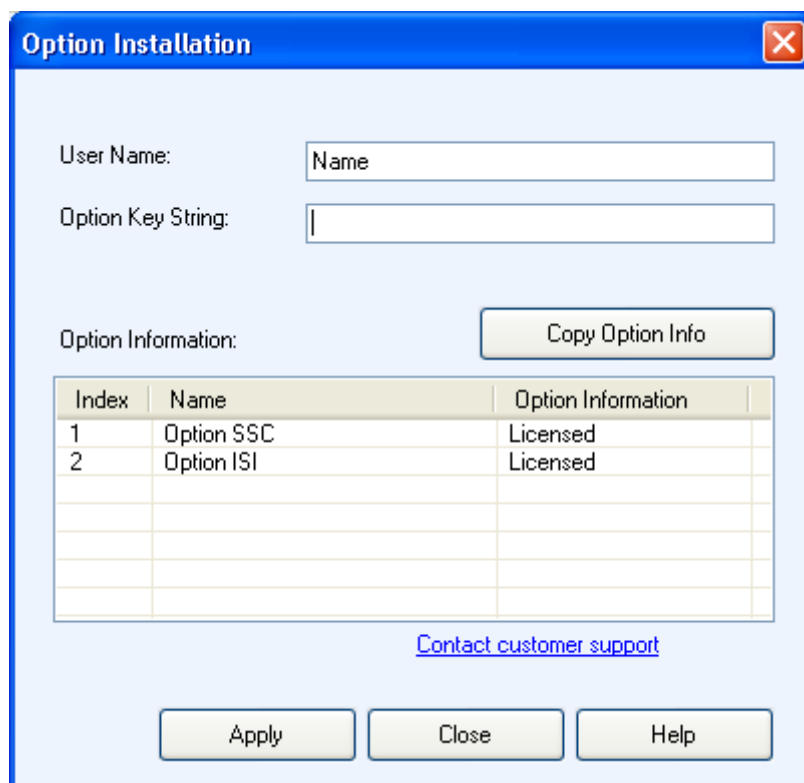
Click **OK** to save the changes and **Compile** to compile the waveform. The waveform name format is “Rj<value>Pj<value>Freq<value>”.

For Example: Rj0.2Pj0.1100000 means Rj of 0.2 UI, Pj of 0.1 UI applied on a frequency of 10 kHz.

## Option Installation

Click **System > Option Installation** to use the SerialXpress application to generate, transfer, and save the waveforms. Once the [trial \(see page 1\)](#) expires, you cannot transfer or save the waveform unless you enable the function with an option (license) key.

Click **System > Option Installation**. This dialog box is displayed.



The dialog box titled "Option Installation" contains the following elements:

- User Name:** A text input field with the placeholder text "Name".
- Option Key String:** A text input field.
- Option Information:** A section containing a table and a "Copy Option Info" button.
- Table:** A table with 3 columns: Index, Name, and Option Information. It contains two rows of data.
- Buttons:** "Apply", "Close", and "Help" buttons at the bottom.
- Link:** A blue hyperlink "Contact customer support" located below the table.

Index	Name	Option Information
1	Option SSC	Licensed
2	Option ISI	Licensed

**Table 11: Option installation information and their description**

Selection	Description
User Name	Enter the user name.
Option Key String	Enter the 20 digit option key string that is provided along with the application.
Option Information	The option information is displayed in the table.

Click **Copy Option Info** to copy the information in the table to the clipboard. Click **Apply** to apply the entered values.

## Restore Default Setup

Click **File > Restore Default Setup** to restore the default values of all the parameters. This option is always enabled.

Clicking **Save** stores the current settings into a folder in **.sxs** format and restores the default settings.

## Open Setup

Click **File > Open Setup** to browse to open a saved setup file.

All files have the file name extension **sxs**. This option is always enabled.

## Save Setup

Click **File > Save Setup** to save the setup file in the **.sxs** format.

Use **File > Save Setup** to save an existing setup file with the same name. If you are saving the setup for the first time, the **Save Setup** option works exactly as the **Save Setup As** option. This option is always enabled.

## Save Setup As

Click **File > Save Setup As** to save the data file in **.sxs** format.

You must compile a setup before you can save the data. If you try to save a setup without compiling, you are prompted to compile the setup. This option is always enabled.

## Import from File

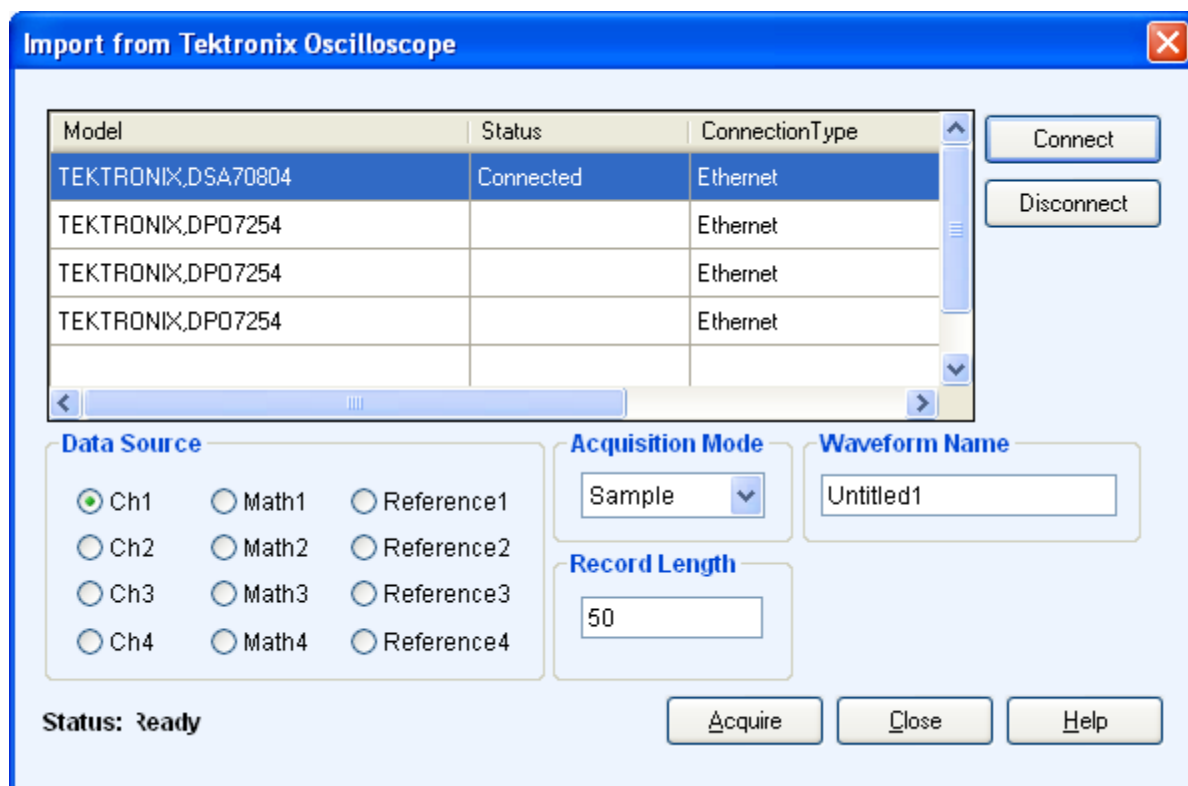
Click **File > Import from File** to import a pattern file created in another application, and add these patterns into SerialXpress. This option is always enabled.

You can import only DTG files.



## Import from Tektronix Oscilloscope

Click **File > Import from Tektronix Oscilloscope** to import a waveform file from a Tektronix oscilloscope that is connected to your AWG into SerialXpress. This dialog box is displayed. This option is always enabled.



A table displays a list of oscilloscopes on the network. Select an oscilloscope in the table and click **Connect** to connect to it. You can connect more than one oscilloscope but can calibrate only one at a time. Click **Disconnect** to disconnect from an oscilloscope.

For a connected oscilloscope, you can set the following parameters:

**Table 12: Waveform import options and their description**

Selection	Description	Default value
Data Source	Select the data from which to acquire the waveform data: Ch1 to Ch4, Math1 to Math4, and Reference1 to Reference4.	Ch1
Acquisition Mode	Set the acquisition mode to one of the following: Samples, Peak Detect, Envelope, or Average.	Samples

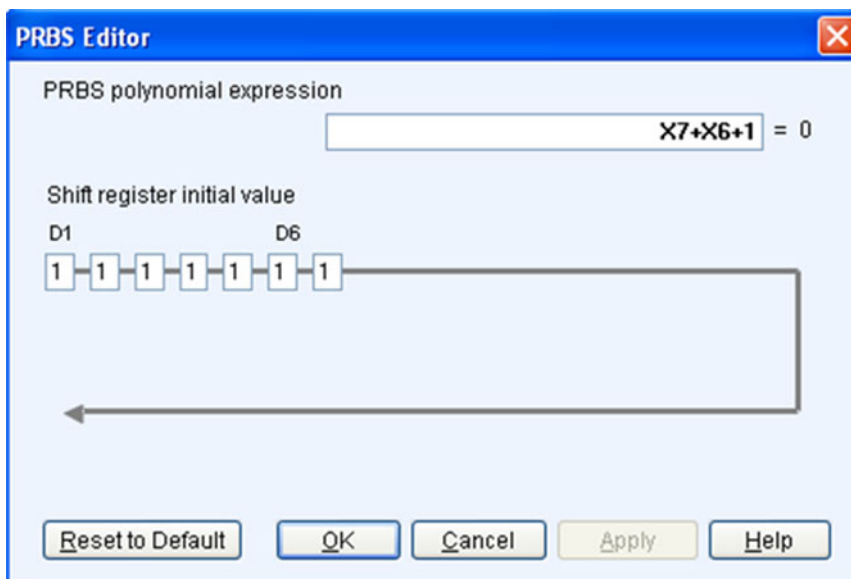
**Table 12: Waveform import options and their description (cont.)**

Selection	Description	Default value
Waveform Name	Specify the waveform name. The imported waveform is saved in the specified name.	N/A
Record Length	Displays the record length of the selected oscilloscope. Change the record length by entering a new value in the field.	N/A

Click **Acquire** to import the data. The specified waveform name is used to list the waveform in the Waveform List.

## PRBS Editor

This dialog box is displayed upon clicking **PRBS Editor** when **Standard** is set to **General**, and **Pattern** to **User-Defined** in the **Base Pattern** tab.



This data source can generate different pseudo-random binary sequences. The available PRBS patterns are: PRBS 7, PRBS 9, PRBS 15, and PRBS 16.

PRBS sequences are generated by a feedback shift register. The accepted value of the shift register text boxes is 1 or 0. The number (#) following PRBS indicates the length of the generating shift register. For instance, a shift register with 16 memory cells is required to generate a PRBS 16 sequence. The pseudo-random sequence of a PRBS generator is determined by the number of registers and the feedback.

**Table 13: PRBS editor options and their description**

Selection	Description	Default value
PRBS polynomial expression	Enter an expression in the format $X^{n1}+X^{n2}+1$ to generate the pseudo-random sequence. The value of $X^n$ ranges between 1 and 31.	$X^7+X^6+1$
Shift register initial value D1– D31	Enter values in the shift registers to create the sequence. The registers D1 through D31 can take the values 0 and 1.	D1– D31

---

**NOTE.** *SerialXpress does not support patterns of all zeroes when the user-defined PRBS equation is selected.*

---

Click **Apply** to effect the changes. Click **Reset to Default** to restore the editor to the default values.

For more details, refer to [PRBS Editor Starting Values \(see page 91\)](#).

## Pre/De-Emphasis and Preshoot Advanced Setup

This dialog box is displayed upon clicking **Advanced Setup** when **Pre/De-emphasis** is selected in the **Transmitter** tab. For more details, refer to [Pre-Emphasis \(see page 100\)](#).

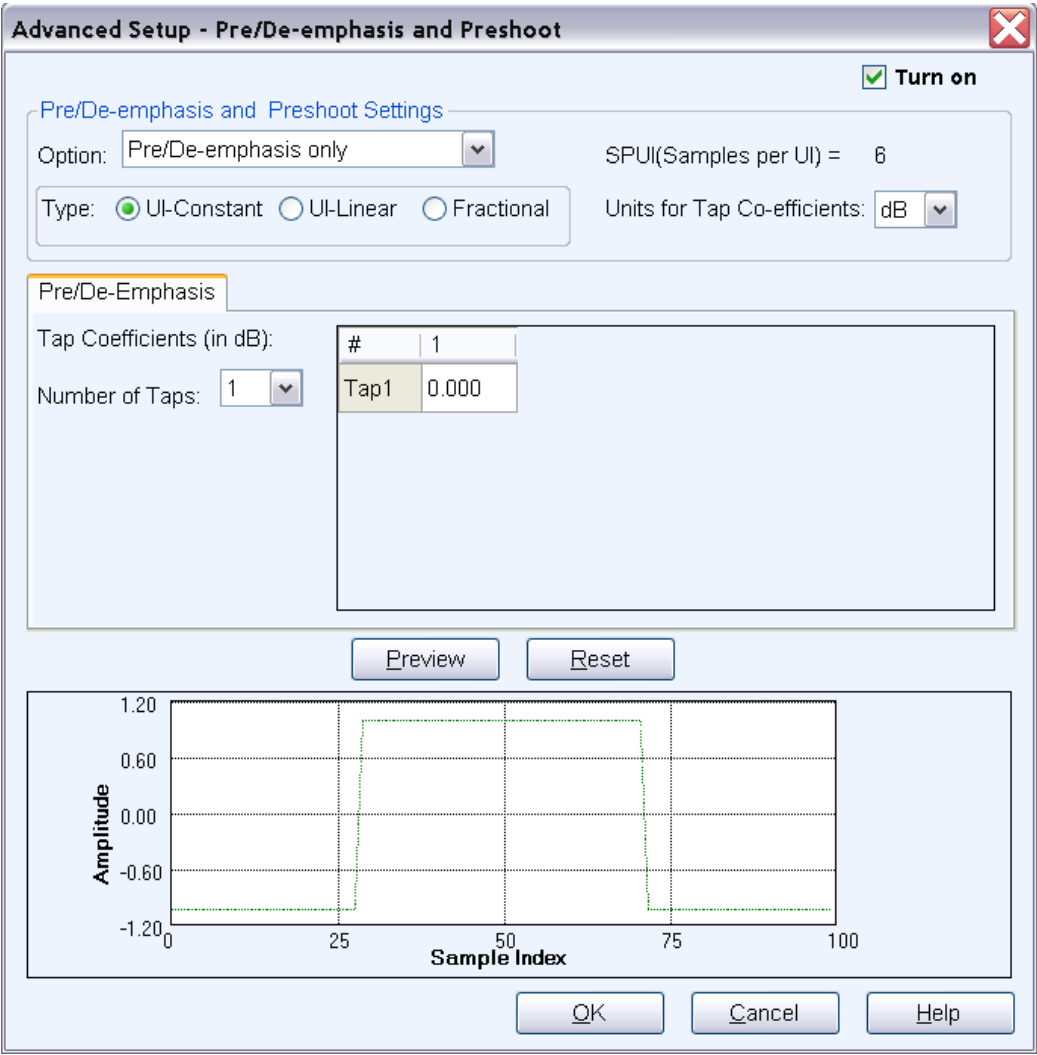


Table 14: Pre/De-emphasis and preshoot advanced setup options and their description

Selection	Description	Default value
<b>Settings</b>		
Option	Select the required option to use. The available selections are: Pre/De-emphasis only, Preshoot only, and Pre/De-emphasis & Preshoot.	Pre/De-emphasis only
Samples per Unit Interval (SPUI)	Displays the samples per UI that is set in the Compile Settings dialog box but the value is equal to floor (SPUI). For example, if the SPUI value set in the Compile Settings dialog box is 3.4, the value used here is 3.	—

**Table 14: Pre/De-emphasis and preshoot advanced setup options and their description (cont.)**

Selection	Description	Default value
Type	<p>Select the type to use. The available selections are:</p> <ul style="list-style-type: none"> <li>■ UI-constant: Pre/De-emphasis is applied to all the samples in the UI.</li> <li>■ UI-Linear: Pre/De-emphasis is applied to all the samples in the UI linearly.</li> <li>■ Fractional: Pre/De-emphasis is applied to a fraction of the UI.</li> </ul>	UI-constant
Units for Tap Co-efficients	<p>Select the units in which the tap-coefficients will be specified (dB and Volt).</p> <p>The tap co-efficients defines the incremental voltage on the pre-emphasized bit.</p> <p>For dB, the value ranges from –20 dB to +20 dB.</p> <p>For Volt, the value ranges from –0.9 V to +9.0 V.</p>	dB
<b>Pre/De-Emphasis and Preshoot tabs</b>		
Pre/De-Emphasis	<p>Specify the number of taps and the tap coefficients.</p> <p><b>NOTE.</b> This tab is not available when <b>Preshoot only</b> option is selected.</p>	—
Preshoot	<p>The number of taps is fixed to 1 and you cannot specify the number of taps. However, you can specify the tap coefficients in the Tap-coefficients table.</p> <p><b>NOTE.</b> This tab is not available when <b>Pre/De-emphasis only</b> option is selected.</p>	—
<b>NOTE.</b> For <b>Pre/De-emphasis and Preshoot</b> option, the number of taps for <b>Pre/De-emphasis</b> is limited to 1.		
Preview	The application computes and displays the waveform based on the pre/de-emphasis and/or preshoot settings.	—
Reset	All the tap co-efficients in the table are set to 0.	—



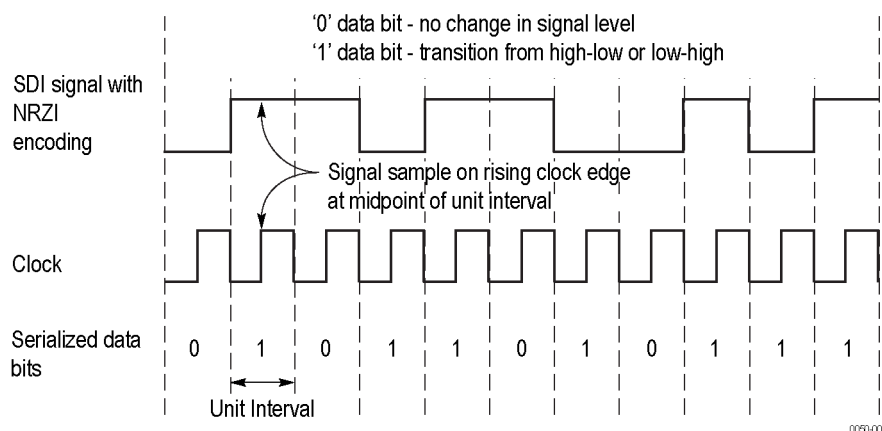
## Setting the Base Pattern

Base data is always in the form of zeroes and ones. Base data can be of two types:

- Standard patterns (such as SATA, HDMI patterns) provided as part of the SerialXpress application
- User created patterns

When you select User Defined patterns, you might need to encode them. SerialXpress supports common encoding techniques such as 8B10B, NRZ, NRZI, and [4-PAM \(see page 102\)](#).

NRZI (no-return to zero inverted), where “0” indicates no change and “1” indicates the current level. If the current waveform is high, a “1” bit value causes a transition to the low waveform level. If the current waveform level is low, a “1” bit value causes a transition to the high waveform level. Refer to the following example.



8B10B is used to encode an 8-bit data to a 10-bit data. This is the most common encoding mechanism used for Serial data standards. For example SATA patterns are 8B10B encoded.

NRZ (no-return to zero), where “0” indicates low value and “1” indicates high value.

Encoding is a process by which input patterns (zeroes and ones) are modified to different patterns (again zeroes and ones in various combinations).

To define the base pattern and source, waveform characteristics, encoding scheme, and rise/fall time parameters, do the following:

1. Set the base pattern. This can be done using one of the following methods:

---

**NOTE.** Use the Invert Bits option in all three methods to create an inverted signal. For example, an input bit stream of 011000 will create a signal of 100111 when the Invert Bits option is enabled.

---

**Method 1: Selecting the Standard Base Pattern**

- Select the standard from the list: SATA, SAS, Display Port, PCI-Express, Fiber Channel, General, USB, and MIPI.
- Select the pattern from a file. The available options depend on the selected standard as follows:

---

**NOTE.** The *General* standard and *Clock* pattern are the default settings.

---

**Table 15: Standard and Pattern options**

Option	Pattern selections	Default
SATA	The selections for SATA are: MFTP, HFTP, SFCP4AlignR12, and others.	MFTP
SAS	The selections for SAS are: JTPAT_RD+ , JTPAT_RD–, and others.	JTPAT_RD+
DisplayPort	The selections for DisplayPort are: DP Training sequence2 960, PRBS7, and others.	PRBS7
PCI-Express	The selection for PCI-Express are: Compliance Pat and Clock.	CompliancePat
Fiber Channel	The selection for Fiber Channel are: CJTPAT, JTPAT, and others.	CJTPAT
General	The selections for General are: Clock, PRBS7, PRBS9, and others.	Clock This pattern has a high frequency clock, such as 1,0,1,0,1,0,...
USB	The selections for USB are: CP0, MinAdd1N, MinAdd1P, and others.	CP0
MIPI	The selections for MIPI are: CJTPAT_FC and Clock.	CJTPAT_FC

**Method 2: Selecting the From File Base Pattern**

Browse to select a file from which to take the pattern. The file format is **txt**.

SerialXpress supports:

- Selecting a single pattern file from mass storage. See [Creating the Base Data \(see page 48\)](#).
- Selecting multiple pattern files from mass storage. See [Creating the Base Data \(see page 48\)](#).



---

**NOTE.** *Selecting single or multiple pattern files allows you to encode the selected data. You can skip encoding if it is not required.*

*When multiple pattern files are selected, the encoding type applies to all the selected pattern files.*

---

- Selecting from a list of pattern data supplied with the application.

**Method 3: Selecting a User Pattern**

- Select any of the User Pattern formats: Binary, Hex, or Symbol. By default, Binary is selected.
- Enter the pattern in the text box.

You can enter up to 20 zeroes, ones, and z's. To enter more than 20 digits, click **Editor**. In the **User Pattern Editor** dialog box, enter up to 128 digits for Hex mode, 512 digits for Binary mode, and 64 symbols for Symbol mode.

---

**NOTE.** *When the pattern file contains 'z', no encoding, scrambling, or distortions are applied.*

---

The format for Symbol mode is Dxx.y or Kxx.y. The first character is either D or K.

You can enter up to 64 symbols, each separated by a comma.

For the D character, the value of **x** is in the range 0 to 31 and **y** is in the range 0 to 7.

For the non-encoded K character, the values of **x** and **y** are as follows:

K28.0 = 00011100

K28.1 = 00111100

K28.2 = 01011100

K28.3 = 01111100

K28.4 = 10011100

K28.5 = 10111100

K28.6 = 11011100

K28.7 = 11111100

K23.7 = 11110111

K27.7 = 11111011

K29.7 = 11111101

K30.7 = 11111110

2. Set the following scrambling parameters:

**Table 16: Scrambling <sup>1</sup> options and their description**

Option	Description	Default
Scrambling	Set this option to enable scrambling.	Disabled
Polynomial	Specify the scrambling polynomial expression. You can enter up to 256 characters.  This option is available only if the <b>Enabled</b> option is selected.  This contains a polynomial expression such as $X^{16}+X^{14}+1$ . If the polynomial format is incorrect, an error is displayed. The polynomial expression is standard-specific.	$X^{16}+X^5+X^4+X^3+1$
Register Initial Value	Specify the register initial values and select the format (Hex or Binary).  The length of the register is equal to the degree of the polynomial.	1111111111111111

<sup>1</sup> Scrambling is used to ensure that the input data stream has sufficient number of transitions. It is used in standards like SATA and USB 3.0.

The SerialXpress application requires a scrambling polynomial as specified by the standard. The standard also specifies the size of the register (such as 16 bits or 32 bits) and initial state of the register. Scrambling is done on each bit of the input stream. The receiver has to unscramble the data to retrieve the original bit stream.

---

**NOTE.** The *K* symbols are not scrambled.

---

3. Set the following PWM parameter.

**Table 17: Encoding options and their description**

Option	Description	Default, Range
PWM	Select PWM to generate a pulse width modulated signal.  For more details on PWM, refer to <a href="#">Pulse Width Modulation (see page 102)</a>	Disabled
T_Minor	Enter the T_Minor value (in UI).  <b>NOTE.</b> This option is enabled only if PWM is selected.	0 UI to 0.5 UI, 0.33 UI
In PWM each bit consists of a negative state followed by a positive state. T_Minor specifies the negative state of the bit (in UI).		

4. Select the following encoding scheme:

**Table 18: Encoding options and their description**

Option	Description	Default
Scheme	<p>Select the encoding scheme to use: NONE (NRZ), NRZI, or 4-PAM.</p> <p><b>NOTE.</b> The 4-PAM symbol can accept input data only in binary format. The length of the input pattern must be an even number.</p> <p>For more details on PAM, refer to <a href="#">Pulse Amplitude Modulation (see page 102)</a></p>	None
8B10B	Select 8B10B to encode an 8-bit data to 10-bit data.	Disabled
Disparity	Select the disparity: Positive or Negative.	RD+
Disparity refers to starting disparity.	<p><b>NOTE.</b> This option is enabled only if 8B10B is enabled.</p>	

5. Set the following signal characteristics:

**Table 19: Signal characteristics and their description**

Option	Description	Range, Default value
Data Rate	Specify the data rate (in bps) of the waveform.	Range: 500 Kbps to 50 Gbps (AWG70001) 500 Kbps to 25 Gbps (AWG70002) 500 Kbps to 6 Gbps (AWG7000B and AWG7000C without interleave) 500 Kbps to 12.0 Gbps (AWG7000B and AWG7000C with interleave) 500 Kb/s to 3300 Mbps (AWG5000) 500 Kbps to 12 Gbps (Offline) Default: 1 Gbps
Idle State	Enter the idle state value (in samples or secs) of the waveform.  Idle state is the state used for some standards like SATA. During this state, the value is neither 0 nor 1. It is a state during which no valid data is transferred between the transmitter and the receiver. SerialXpress supports Idle state waveforms with idle value and idle offset.  Idle state waveforms are individual waveforms that can be sent to the AWG. Use the sequence mode to take the receiver to the idle state. The waveforms contain the DC values with no base data during this state. You can add the number of samples and noise as required in the idle state waveform.	53 ns to 100 $\mu$ s, 320 ns

The default data rate changes depending on the selected standard. You can change the data rate if necessary. The following table lists the default data rate for various standards.

**Table 20: Signal standards and their default data rates**

Signal standards	Data rate
SATA	3 Gbps
SAS	3 Gbps
DisplayPort	2.7 Gbps
PCI-Express	5 Gbps
Fiber Channel	4.25 Gbps

**Table 20: Signal standards and their default data rates (cont.)**

Signal standards	Data rate
USB	5 Gbps
MIPI	3 Mbps

**NOTE.** When you select **Idle State**, all the parameters in the **Encoding**, **Scrambling**, **Rise/Fall** groups, **Transmitter tab**, and **Channel/Cable tab** are disabled.

6. Set the following offset parameter:

**Table 21: Offset option**

Option	Description	Default
Idle State Offset	Enter the idle state offset value (in Volts) of the waveform.  This is available only when <b>Pattern</b> is set to <b>Idle state</b> .	–0.5 V to +0.5 V, 0 V

7. Set the following amplitude parameters:

**Table 22: Amplitude options and their description**

Option	Description	Default
Maximum	Specify the maximum amplitude (in volts) of the waveform.	+0.5 V to –0.25 V Default: +0.5 V (Offline) Depends on the maximum amplitude value of the AWG (Online)
Minimum	Specify the minimum amplitude (in volts) of the waveform.	+0.25 V to –0.5 V Default: –0.5 V (Offline) Depends on the maximum amplitude value of the AWG (Online)

SerialXpress can generate waveforms that occupy only a part of the full DAC range of the AWG. By default, the generated waveforms occupy the whole DAC range. When SerialXpress is in the online mode, the maximum voltage corresponds to the full DAC of the AWG on which it is running. When SerialXpress is in the offline mode, the maximum range is assumed to be 1 Vpp (peak-to-peak).

8. SerialXpress allows both equal and unequal rise and fall times. Set the following rise/fall time parameters:

**Table 23: Rise/Fall Time options and their description**

Option	Description	Range, Default value
Rise/Fall Time	Set the Rise/Fall time option to 10/90 or 20/80. This defines whether rise and fall times are calculated using 10/90 or 20/80 ratio.	10/90 or 20/80, 20/80
Rise	Set the rise time in s or UI. The rise time is used to define how steep the rising slope will be.	Range: 0.6/sampling rate to 0.6/data rate Default: 100 ps
DCD	Set the DCD in s or in UI.  When DCD is disabled, the rise and fall times can be controlled. When DCD is enabled, the rise and fall times are calculated separately to achieve the required DCD.	0 UI to 1 UI, 0 UI
Fall	Set the fall time in s or UI.  When fall time is enabled, DCD is calculated internally. When DCD is enabled, the fall time value is calculated internally.	Range: 0.6/sampling rate to 0.6/data rate Default: 100 ps

When you change the unit for rise and fall times from UI to secs, or secs to UI, the value of rise and fall time changes to reflect their equivalent in the new unit.

A unit interval (UI), also referred to as a bit time, is the time taken in a data stream for one bit. For example, in a serial line with a baud rate of 2.5 Gb/s, a unit interval is  $1/(2.5 \text{ Gb/s}) = 0.4 \text{ ns/bit}$ .

9. Set the following marker parameters:

**Table 24: Marker Settings options and their description**

Option	Description	Default value
Base pattern	Select this option to set the marker output to be the same as the base pattern.	Enabled
Clock	Select this option to set the marker output to be same as the selected clock type. You can select the clock from the available options. If you have selected the clock as <b>User Defined</b> , you can change the frequency. <b>NOTE.</b> <i>If the frequency that you have entered is not a factor of the data rate, the marker may not synchronize with the rising edge of each data bit.</i>	Disabled
High/Low	Select this option to set the marker output to all high, all low, or trigger. Selecting Trigger sets the beginning N samples of the waveform to high. N is the number of specified samples.	Disabled

## Creating the Base Data

### Selecting a pattern file from mass storage

The pattern format is as shown:

---

**NOTE.** *The file format is `txt`. If a pattern file does not have the specified data in any row or data bit as follows, then the waveform generation fails.*

---

Row<1> D1 D2 D3 D4 D5 D6 D7 D8 D9 D10<CR><LF>

Row<2> D11 D12 D13 D14 D15 D16 D17 D18 D19 D20<CR><LF>

Row<3> D21 D22 D23 D24 D25 D26 D27 D28 D29 D30<CR><LF>

.....<CR><LF>

Row<n>.....<CR><LF><EOF>

where,

Row<n> refers to row number.

D30 to D1 refers to data bits with the values 1 or 0.



<CR> refers to carriage return.

<LF> refers to line feed.

<EOF> refers to end of file.

---

**NOTE.** *Row number and EOF do not appear as part of the file.*

---

<CR> and <LF> together can be considered as the end of line.

Selecting single or multiple pattern files allows you to encode the selected data. You can skip the encoding if not required.

---

**NOTE.** *When multiple pattern files are selected, the encoding type applies to all the selected pattern files.*

---

#### File format for 8-bit data.

<D1>,<D2>,<D3>,<D4>,<D5>,<D6>,<D7>,<D8>,<M1>,<M2><CR><LF>

<D11>,<D12>,<D13>,<D14>,<D15>,<D16>,<D17>,<D18>,<M1>,<M2><CR><LF>

where, <M1>,<M2> are the marker bits.

The file format for 8-bit data is as follows:

```
0,0,0,0,0,0,0,0,0
0,0,0,1,1,1,0,0,0
0,0,1,1,1,0,0,0,0
0,1,0,1,0,1,0,1,1
0,1,1,1,0,0,0,0,1
1,0,0,0,1,1,0,1,1
1,0,1,0,1,0,0,1,1
1,1,0,0,0,1,1,0,0
1,1,1,0,0,0,1,0,0
1,1,1,1,1,1,1,0,0
```

---

**NOTE.** *You can replace 0 and 1 with 'z'.*

---

**File format for 10-bit data.**

<D1>,<D2>,<D3>,<D4>,<D5>,<D6>,<D7>,<D8>,<D9>,<D10><CR><LF>

<D11>,<D12>,<D13>,<D14>,<D15>,<D16>,<D17>,<D18>,<D19>,<D20><CR><LF>

The file format for 10-bit data is as follows:

```
0,0,0,0,0,0,0,0,0,0,0
0,0,0,1,1,1,0,0,1,0
0,0,1,1,1,0,0,0,1,1
0,1,0,1,0,1,0,1,0,1
0,1,1,1,0,0,0,1,1,0
1,0,0,0,1,1,1,0,0,0
1,0,1,0,1,0,1,0,0,1
1,1,0,0,0,1,1,0,1,1
1,1,1,0,0,0,1,1,0,0
1,1,1,1,1,1,1,1,1,0
```

---

**NOTE.** You can replace 0 and 1 with 'z'.

---

**Annotated text file format.**

The following is an example of an annotated file format:

<D1> /Comment <CR><LF>

<D2><D3><D4> /Comment <CR>

<D5><D6> /Comment <CR><LF>

<D7><D8><D9><D10> /Comment <CR><LF>

The value of Dx is either 0, 1, or 'z', where 'x' is an integer number indicating the bit number.

The annotated text files contains any number of bits or 'z' characters per line and comments.

'/' indicates the start of the comment. Any data or text after the '/' character is ignored.

**File format for symbol data.**

<Symbol><CR><LF>

<Symbol><CR><LF>

<Symbol><CR><LF>

<Symbol><CR><LF>

<Symbol><CR><LF>

**Annotated file format for symbol data.**

<Symbol> /Comment<CR><LF>

<Symbol> /Comment<CR><LF>

<Symbol> /Comment<CR><LF>

---

**NOTE.** By default, all the symbols are assumed to be 8-bit non-encoded data. Use encoding to encode symbol data. By default, the NRZ encoding scheme is selected. When 8B10B encoding is selected along with the other encoding (NRZ, NRZI, or 4-PAM), the 8B10B encoding will be applied last.

When any encoding other than 8B10B is applied to a user pattern file containing D and K characters, the application cannot distinguish between these characters. In such cases, all the characters are assumed to be D.

---

The following format is selected as input to the SerialXpress, when both NRZI and 8B10B encoding are selected:

D28.5

D16.3

D13.3

K28.5

The output file format is as follows:

D28.5

D16.3

D13.3

D28.5

The final output will have all D characters.

If only the 8B10B encoding is selected, the application generates the output for K28.5.

---

**NOTE.** When the pattern file contains 'z', no encoding is applied.

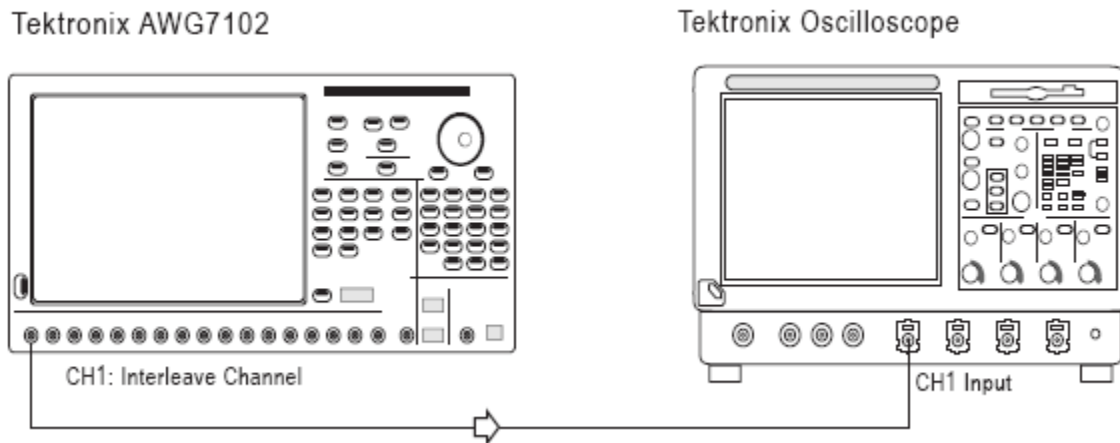
---

## Calibration for Base Pattern Signals

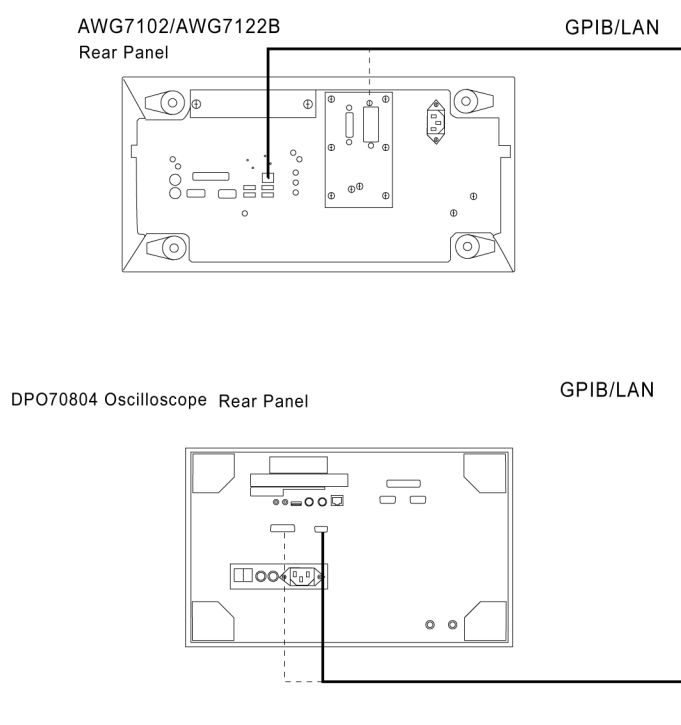
Calibration is available under the following conditions:

- When the SerialXpress is running on an AWG7000 or AWG5000 series instrument, or
- When configured and connected to AWG70000A series instrument.

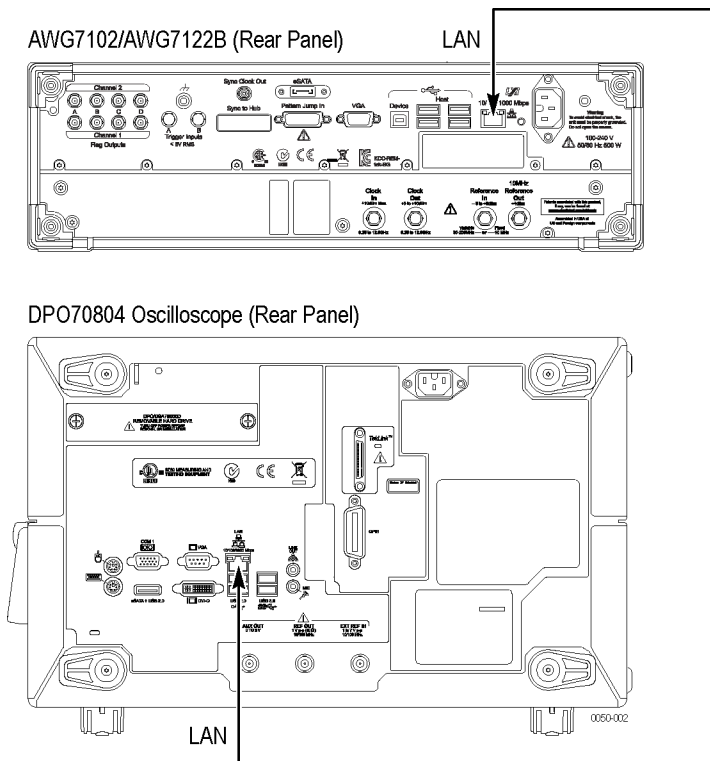
For Base Pattern waveforms, connect the AWG and oscilloscope as follows (AWG7000 series instrument with interleave option):



The rear panel connections of an AWG7000 or an AWG5000 series instrument and an oscilloscope are as shown:



The rear panel connections of an AWG70000 series instrument and an oscilloscope are shown:



## Creating Calibration Data

1. Select **Calibration** from the toolbar.
2. From the list of instruments, highlight an oscilloscope and click **Connect**.
3. Set the Calibration parameters. For more details, refer to [Calibration \(see page 20\)](#).
4. Click **Calibrate**. A status message displays the status of processing.

The files (.sxc) created contains calibration data.

## Setting the Sequence Parameter

SerialXpress operates in two modes: Single and Sequence. By default, Single mode is selected.

---

**NOTE.** Calibration is not supported in Sequence mode.

---

### About Sequencing

In the Single mode, you can select a set of patterns and compile jitter waveforms using these patterns. However, each of these waveforms are independent. The waveform characteristics, such as disparity, phase of periodic jitter, phase of SSC profile, and others are not carried over from one waveform to the next. When a group of such waveforms are sent to the AWG sequence, the output of the AWG will have wrong disparity and might have discontinuity in waveform or periodic jitter at the boundaries of the waveform.

Using sequencing, you can resolve this problem. SerialXpress lets you define the sequence before creating the waveform. It creates waveforms in the same order as defined in the Sequence table with the required waveform characteristics carried over from one waveform to the next. The set of waveforms is then transferred to the AWG sequence. This eliminates the effects of discontinuity between waveforms.

### Sequence Mode

When you select the Sequence mode, a table is displayed. Use the sequence table to set the waveforms for the channel in a sequence and generate waveforms one after the other depending on the sequence. Click Add to add a sequence element to the table. You can add up to 1000 sequence elements. When the number of sequences exceeds the limit, an error message is displayed and the software does not allow you to add any more rows. You must remove a sequence row before you can add another sequence element.

When you switch to the Single mode, the contents of the table are carried over. The sequence settings are restored when you return to the Sequence mode.

**Table 25: Sequence table options**

Control	Description	State	Default value
Index	This column indicates the order in which the waveform will be output from the channel.	Read only	Blank
Base Pattern	This column shows the selected base pattern for each sequence.	Read only	Blank The pattern selected in the base pattern is displayed.
Wait	This column allows you to set the wait to On/Off. If you set the wait to On, the sequencer waits for the trigger before generating the waveform.	Read/Write	Blank This parameter is set to Off when you add a sequence element.

**Table 25: Sequence table options (cont.)**

Control	Description	State	Default value
Repeat Mode	<p>This column allows you to set the repeat mode to auto, manual count, manual time, or infinite.</p> <p>When you select Auto, the repeat count column is disabled and the value in that column is not considered for compilation. Optimal value for repeat count is calculated by the application.</p> <p>When you select Manual Count, the repeat column is enabled and is set to 1 (by default).</p> <p>When you select Manual Time, the repeat column is enabled and you can specify the waveform duration in seconds.</p> <p>When you select infinite, the repeat column is disabled and repeat is set to infinite.</p>	Read/Write	<p>Blank</p> <p>This parameter is set to Auto when you add a sequence element.</p>

**Table 25: Sequence table options (cont.)**

Control	Description	State	Default value
Repeat	<p>This column shows the repeat count currently selected.</p> <p>This option is available only when the Repeat mode is set to Manual.</p> <p>The minimum and maximum repeat counts are 1 and 1 M.</p>	<p>Read only, when the Repeat mode is set to Auto or Infinite.</p> <p>Read/Write, when the Repeat mode is set to Manual Count or Manual Time (s).</p>	<p>Blank</p> <p>1 is displayed when you add a sequence element to the list.</p>
Go To	<p>This column shows the Go To target number.</p> <p>You can specify a Go To target for each sequence element. The sequencer jumps to the element specified as the Go To target.</p> <p>If the Go To target is not specified, the sequencer moves to the next element.</p> <p>The Go To target number should not be greater than the sequence length. The number must be a positive integer starting from 1.</p>	Read/Write	<p>Blank.</p> <p>You can edit this column only if there is a sequence element in the list.</p>

The following buttons are available for the Sequence mode:

- Up and Down Arrows: Moves a selected sequence element up or down the table.
- Add: Adds the sequence element at the end of the sequence table with the parameters as set in the Base pattern, Transmitter, and Channel/Cable tabs.
- Add multiple files: Allows you to add multiple files to the sequence table.
- [Batch Setup \(see page 28\)](#): Enables batch compilation. When you click the button, you can set the values to be used for batch creation and specify the sequence index to which the batch process should be applied.

The following options are available when you right-click on the selected row in the table:

- Cut: Cuts the selected rows.
- Copy: Copies the current selected row.
- Paste: Pastes the contents from memory on to the selected row and replaces the selected row.
- Insert: Inserts a copied sequence element with the selected row data below a selected row.



- Delete: Deletes the selected row.
- Delete All: Deletes all the rows in the table.

## Setting Jitter Parameters

Click **Transmitter** tab to add periodic and random jitter to the waveform that you want to create. To add jitter, do the following:

1. To introduce one or more sine waves as periodic jitter, enable one or more check boxes. Set the Magnitude (UI), Frequency (Hz), and Phase (°) for each.

**Table 26: Setting periodic jitter parameters**

Option	Description	Range, Default
Magnitude	Set the magnitude of the sine wave (jitter) (in UI) to introduce.	0 UI to 50 UI, 0 UI
Frequency	Set the frequency of the sine wave (jitter) (in Hz) to introduce.	10 kHz to Data rate/2, 10 MHz
Phase	Set the phase of the sine wave (jitter) (in degrees) to introduce.	0 ° to 360 °, 0 °

For examples on periodic jitter, refer to [Periodic Jitter Sample Test Results \(see page 108\)](#).

2. To add one or more random jitters, enable one or more check boxes. Set the Magnitude (UI), Frequency-Low (Hz), and Frequency-High (Hz) for each.

**Table 27: Setting random jitter parameters**

Option	Description	Range, Default
Random Seed	Set this option to use the same random jitter sequence during each compilation. The required random jitter sequence is generated through a 5-digit seed. By keeping the 5-digit seed constant, the same random jitter sequence is generated during each compilation.  When disabled, the uncorrelated random jitter sequence is generated during each compilation.	1 to 99999, 12345
Rj1 Crest Factor (Peak)	Set this option to apply the required crest factor value of Rj1 to the serial data. This value can be applied only to Rj1.  When you enable Rj1 with a specified RMS value within a short signal duration, it will not reach the peak value. By enabling this, a required crest factor value of Rj1 is applied to the serial data during data transmission.  For example, if the Rj1 crest factor is set to 12 and magnitude (RMS) for Rj1 is 0.05 UI, then the Rj1 peak value is $12 \times 0.05 = 0.6$ UI.	1 to 20, 12.732
Magnitude	Set the RMS magnitude of the random jitter (in UI) to introduce.	0 UI to 0.5 UI, 0 UI
Frequency-Low	Set the low frequency of the random jitter (in Hz) to introduce.	1 Hz to (Frequency-High – 1 M), 100 kHz
Frequency-High	Set the high frequency of the random jitter (in degree) to introduce.	1.1 MHz to Data rate/2, Data rate/2

The random jitter generated through a random sequence is independent for each compilation.

3. To specify SSC parameters, select **SSC** and set the following parameters:

**Table 28: Setting SSC parameters**

Option	Description	Range, Default value
Shape	Select the shape of the SSC profile to use. The available selections are: Sine, Triangle, and <a href="#">Custom (see page 96)</a> .	Triangle
Spread	Select the SSC spread to use. The available selections are: Up, Down, Center, and Unequal.	Down

**Table 28: Setting SSC parameters (cont.)**

Option	Description	Range, Default value
Unequal Spread	Enter the unequal spread.	0% to 100%, except 50 indicates unequal spread. 0 is equivalent to <b>Down</b> spread. 50 is equivalent to <b>Center</b> (equal) spread. 100 is equivalent to <b>Up</b> spread. Default: 0%
<b>df/dt</b>		
Minimum Duration	Enter the minimum duration of df/dt. The duration is the same for both the rising and falling edges.	0 $\mu$ s to 5 $\mu$ s, 0 $\mu$ s
Location	Enter the location of df/dt. This specifies the location (in % of height) of the df/dt spike on both the edges. The spikes are located symmetrically on both the rising and falling edges.	20 % to 80 %, 50 %
df/dt	Enter the df/dt of the waveform. This defines the sudden deviation (spikes) of the SSC profile from the predefined pattern.	0 ppm/ $\mu$ s to 5000 ppm/ $\mu$ s, 0 ppm/ $\mu$ s
<b>Frequency</b>		
Deviation (Hz)	Enter the frequency deviation. This defines the maximum deviation of the data rate from mean data.	0 ppm to 200000 ppm, 4000 ppm
Modulation	Enter the frequency modulation. This defines the frequency of the modulating SSC profile.	10 kHz to 500 kHz, 33 kHz

4. SerialXpress supports adding noise and peak controlled pre/de-emphasis. Select and enter the following:

**Table 29: Noise and Pre-Emphasis options and their description**

Option	Description	Range, Default
Noise	Enter the amplitude of the noise (in volts) to generate.	0 Volt (RMS) to 0.5 Volt (RMS), 0 Volt (RMS)
Add Noise At	Select where the random noise will be added to the waveform. It can be added to simulate the near end or far end.	Near end and Far end, Near end
Noise Frequency	Select the type of noise either, Full Bandwidth or Single Tone noise. Full Bandwidth: Generates white noise between 0 Hz to $F_s/2$ Hz. Single Tone: Generates sine noise at the specified frequency. For an example, see <a href="#">Generate Common Mode Noise (see page 107)</a>	10 Hz to $F_s/2$ Hz
Pre/De-emphasis and Preshoot	Enter the amplitude (in dB or volts) of the pre/de-emphasis and preshoot to be introduced in the waveform.	0 dB to 20 dB, 0 dB
<a href="#">Advanced Setup (see page 35)</a>	Select this to apply the advanced pre/de-emphasis and/or preshoot parameter settings. Click this button to open the Advanced Settings dialog box. For more details on pre/de-emphasis and preshoot, refer to <a href="#">Pre/De-emphasis (see page 100)</a> .	Disabled

## Setting ISI and S-Parameter Filter Parameters

Click **Channel/Cable** tab to specify inter-symbol interference (ISI) or S-Parameter Filter parameters for the waveform.

1. To specify the ISI, select the **ISI** option.
2. To specify the S-Parameter filter, select the **S-Parameter Filter** option.
3. Set the following channel/cable parameters:

**Table 30: Channel/Cable options and their description**

Option	Description	Range, Default
ISI	Select this option and specify the inter-symbol interference (in UI or seconds).	0 UI to 1 UI, 0 UI
<b>S-Parameter Filter</b>		
Select the Mode	Select the <a href="#">S-Parameter filter mode (see page 62)</a> . The available selections are: Non-Cascading and Cascading.	Non-Cascading
Plot frequency response on compile	Select this to plot the frequency response of the S-parameter file. This will display two plots showing: <ul style="list-style-type: none"> <li>■ Frequency characteristics of the S-parameter file</li> <li>■ Frequency response of the computed filter</li> </ul>	Disabled
Bandwidth limit – embed/de-embed	Select the bandwidth limit – embed/de-embed. The available selections are: None, Auto, and Custom. <p>A bandwidth limit filter is applied to the response of the Touchstone file to limit the bandwidth of the filter. The cutoff frequency of this bandwidth limit filter is calculated depending on the selection.</p> <p>If you select <b>None</b>, the cutoff frequency of the filter is <math>F_s/2</math> (where <math>F_s</math> is the sampling frequency).</p> <p>If you select <b>Auto</b>, the cutoff frequency is the –14 dB point of the channel response.</p> <p>If you select <b>Custom</b>, the cutoff frequency is the frequency that you specify.</p>	None

**Table 30: Channel/Cable options and their description (cont.)**

Option	Description	Range, Default
Read from File	Browse and select the file from which to read the filter. The files supported are s1p, s2p, s4p, and s8p.	s4p
<b>Inverse Filter</b>		
Write to File	Browse and select the <a href="#">inverse filter (see page 62)</a> file.	Disabled
Sampling Frequency	Specify the sampling rate for the filter file.	25 GHz or 50 GHz, 25 GHz
<a href="#">ISI Scaling (see page 98)</a>	Enter the ISI scaling.	0 to 10, 1

### Inverse Filter

Inverse filter is used to neutralize the effect of the cable and produce an undistorted waveform.

To get an undistorted waveform, select the corresponding S-Parameter file of the cable in use using **Read From File**. Inverse filter is applied to the generated waveform and passed through the cable to the DUT. An undistorted Eye DPO waveform is produced at the DUT.

### S-Parameter Cascading

S-parameter cascading is used to emulate the effect of multiple components in a Serial Data test system. This could be multiple channels connected one after the other as in USB 3.0 or different components like connectors, channels, and fixtures connected together as in a typical high speed serial data test system.

S-parameter cascading is accomplished by first converting individual S-parameter data to T-Parameter, then combining all T-parameters to obtain residual T-parameter. This residual T-parameter is again converted to S-parameter.

### S-Parameter Filter Mode

You can either select Non-cascading or Cascading S-parameter mode.

In the non-cascading mode, you can apply S-parameter characteristics on the signal from only one S-parameter file. From the **Read From File** field, browse and select the Touchstone file. The files supported are s1p, s2p, s4p, and s8p.

In the cascading mode, you can cascade up to six S-parameter files and apply the characteristics on the signal. You can select the files to apply by turning on or turning off the corresponding blocks shown in the display. All the selected files should be of the same type. The settings depend on the selected type of file (\*.s1p, \*.s2p, \*.s4p, and \*.s8p). The type (single-ended or differential) and port selection are common for all the cascading files. You can select the files by clicking inside the boxes and browsing to the file. Click **On/Off** to include or exclude the file.

## S-Parameter Touchstone Files

The S-parameter (Touchstone) file can contain data for 1-port, 2-port, 4-port, or 8-port devices. Once a file is selected, the application reads its contents and displays the appropriate controls for you to select the particular S-parameter in the file to use.

**One-port.** Files with one port of data contain only one S-parameter file (**s1p**) so they do not require any further input.

**Two-port.** Files with data for two ports contain four S-parameters as a 2x2 matrix. These are Touchstone 2-port files (**s2p**). When the application recognizes such an S-parameter file, a dialog box is created for you to select the S-parameter representing channel transmission. By default, SerialXpress assumes the location of the channel transmission data in the file to be  $S_{21}$ .

**Four-Port.** Files with data for four ports may contain single-ended or differential data. These are Touchstone 4-port files (**s4p**). By default, SerialXpress assumes the file to be Differential data type.

- If the data is single-ended, you must map the port numbers as used in the file to physical locations in your link. A default mapping is assumed. The application will use this mapping to compute the  $S_{dd21}$  parameter (for transmission of a differential signal) from the appropriate four S-parameters measured using single-ended data.

You can select the port for both transmitter and receiver from the drop-down list. Each drop-down list has ports from 1 to 4. The default port number is as follows:

Type	Default port
Tx+	1
Tx–	3
Rx+	2
Rx–	4

- If the data is differential, you must select the data layout in the file. By default, SerialXpress assumes the file to use Typical port layout format. The application always uses the  $S_{dd21}$  parameter for computing the transmitted waveform no matter which mapping is selected.

**Eight-Port.** These are Touchstone 8-port files (**s8p**). SerialXpress supports s8p files in both cascading and non-cascading modes. By default, SerialXpress assumes the file to be Differential data type. Browse and select a Touchstone file and do the following:

**Table 31: Aggressor options and their description**

Option	Description	Default
Aggressor	Select this to activate aggressor signal parameters and to add the effect of cross-talk.	Enabled
Signal	<p>Select the signal to use. The available options are:</p> <ul style="list-style-type: none"> <li>■ Pattern file: Indicates that the aggressor signal is another pattern file.</li> <li>■ Clock: Indicates that the aggressor signal is a clock pattern.</li> <li>■ Same as victim: Indicates that the aggressor signal is same as the victim signal and has all the characteristics of the victim signal.</li> </ul>	Pattern file
Pattern	Browse and select the pattern file.	–
Data rate	<p>Specify the data rate (in bps) of the signal.</p> <p>This option is available only when the Aggressor signal is set to <b>Pattern file</b>.</p>	The data rate set in the Base pattern tab.
Amplitude Scale	Enter the scale of the signal.	1
Rise/Fall	<p>Enter the rise and fall times (in s or UI) of the signal.</p> <p>For the aggressor signal, the maximum value of the rise and fall times varies depending on the aggressor data rate.</p>	The rise time set in the Base pattern tab.
Frequency	<p>Enter the frequency (in Hz) of the clock signal.</p> <p>This option is available only when the Aggressor signal is set to <b>Clock</b>.</p>	Equal to the data rate set in the Base pattern tab.
Direction	<p>Select the direction of the signal. The available options are:</p> <ul style="list-style-type: none"> <li>■ Same as victim: Indicates that the signal flow of the aggressor is same as the victim.</li> <li>■ Opposite to victim: Indicates that the signal flow of the aggressor is opposite to the victim.</li> </ul>	Same as victim

**Touchstone 8-port Data Type.** When you select single-ended, you can select the port for both transmitter and receiver from the drop-down list. Each drop-down list has ports from 1 to 8. The default port numbers of the victim and aggressor signals are as follows:



**Victim signal**

Type	Default port
Tx+	1
Tx-	2
Rx+	5
Rx-	6

**Aggressor signal**

Type	Default port
Tx+	3
Tx-	4
Rx+	7
Rx-	8

---

**NOTE.** *All the port numbers should be unique.*

---

If you select Differential port type, pair 1 is the victim signal (by default) and pair 2 is the aggressor signal. By selecting Swap port definitions, pair 1 is the aggressor signal and pair 2 is the victim signal.



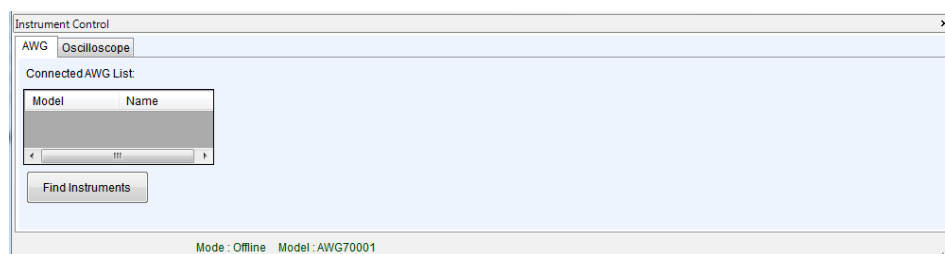
## Connecting to an instrument

SerialXpress can be connected to various networked instrument types through either LAN or GPIB networks.

The Instrument Control dialog screen provides tabs for these instrument types:

- AWG – Tektronix Arbitrary Waveform Generators including AWG70000A Series, AWG7000 Series, and AWG5000 Series.
- Oscilloscopes – Tektronix oscilloscopes

The connection is made via the TekVISA communication software. TekVISA must be installed and running on both the PC (with SerialXpress) and the target instrument. Use the Open Choice Resource Manager tool in TekVISA (on the PC with SerialXpress) to discover the networked instruments.



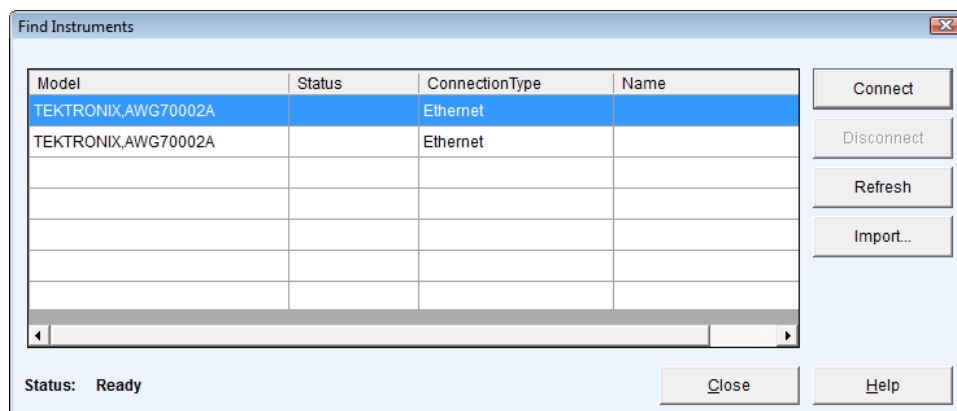

---

**NOTE.** For AWG5000 and AWG7000 Series Arbitrary Waveform Generators, it's recommended to install SerialXpress directly on the instrument. SerialXpress automatically detects the generator and appears in the AWG tab of the Instrument Control dialog screen.

---

Once TekVISA has located your instruments, use the Find Instruments in the Instrument Control dialog box to select and connect to the instrument.

1. Click Find Instruments. The following dialog box opens.



The table lists the instruments found with the name of the instrument, model, status (connected or not), and the connection type (Ethernet or GPIB).

2. Select an instrument from the table. Use the following buttons.

**Table 32: Find instruments options**

Button	Description
Connect	Allows you to Connect to the instrument selected in the table. Enabled is default if an instrument is highlighted in the table; disabled if no instrument is highlighted.
Disconnect	Allows you to Disconnect the connected instrument. Enabled only when an instrument is connected.
Refresh	Refreshes the list of instruments.
<a href="#">Import...</a> (see <a href="#">page 33</a> )	Opens the Import from Tektronix Oscilloscope dialog box.

3. Click Connect to connect to the selected instrument.

---

**NOTE.** *If you cannot find your AWG70000A series instrument after installing TekVISA, check to see if NI VISA is installed on your PC.*

*If NI VISA has been installed, see the procedure below to repair the installation.*

---

### Connection problem to an AWG70000A series instrument

If you cannot find your AWG70000A series instrument after installing TekVISA, it could be due to a previous installation of NI VISA.

If NI VISA has been installed, you need to replace the Visa32.dll file, use the following steps:

#### On a Windows 7, 64 bit, PC.

1. Locate and copy the Visa32.dll file. This file can be found in one of two places:
  - C:\Program Files(x86)\IVI Foundation\VISA\WinNT\TekVISA\Bin
  - C:\VXIbnp\WINNT\TekVISA\Bin
2. Navigate to C:\Windows\SysWOW64
3. Paste the Visa32.dll file, replacing the existing file.

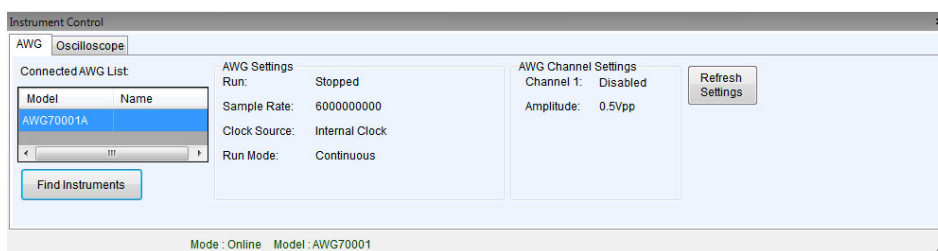
**On a Windows 7, 32 bit, PC.**

1. Locate and copy the Visa32.dll file. This file can be found in one of two places:
  - C:\Program Files\IVI Foundation\VISA\WinNT\TekVISA\Bin
  - C:\VXIppn\WINNT\TekVISA\Bin
2. Navigate to C:\Windows\System32
3. Paste the Visa32.dll file, replacing the existing file.

## Controlling an AWG70000A Series Arbitrary Waveform Generator

**NOTE.** To establish a connection to an AWG70000A Series generator, you must run the AWG70000A Series configuration utility located in the Tektronix SerialXpress Program folder. See [AWG70000 Series configuration utility \(see page 4.\)](#).

After establishing a connection with an AWG70000A Series arbitrary waveform generator (using the Find Instrument in the Instrument Control dialog screen), use the AWG tab in the Instrument Control screen to see the connected AWG.



The Setting displayed are the settings read by SerialXpress. Use the Refresh Setting button to update the display.

SerialXpress does not provide direct access to the controls of an AWG70000A Series arbitrary waveform generator. But once connected to it via a LAN connection, you can compile and send waveforms to the instrument.

When compiling and sending a waveform, SerialXpress adjusts the controls of the instrument to appropriate settings for the compiled waveform.

Settings affected are:

- Playout temporarily stopped during setup
- Channels enabled
- Channel amplitude set
- Run Mode set to Continuous

- Clock Source set to Internal
- Sample rate adjusted
- Reduce Jitter function turned off
- Payout enabled

Any further control settings or stopping and starting payout must be done from the instrument.

---

**NOTE.** *If you have not run the AWG70000A Series configuration utility to provide SerialXpress with the type of AWG70000A Series generator you are attempting to connect with, an error message is displayed. See [AWG70000 Series configuration utility \(see page 4.\)](#).*

---

## Controlling an AWG5000 or AWG7000 Series Arbitrary Waveform Generator

SerialXpress interfaces with an AWG5000 or AWG7000 series instrument in the following ways:

- Installing SerialXpress on an AWG series instrument can directly send and receive data from the AWG.
- Installing an offline version of SerialXpress on a PC with an offline version of the AWG software can detect the presence of the AWG software and send data to it. This data can be opened and viewed in the AWG software.

You can control the following AWG parameters:

- Channel waveform
- Amplitude
- Sampling rate
- Interleave (Option 06 only)
- Interleave Zeroing (Option 06 only)

SerialXpress supports the following operations:

- Transferring a waveform data to AWG as real format waveform. During this operation, the marker data is also transferred.
- Loading a waveform to a channel.
- Changing the run state.

Do the following steps to control and transfer a waveform to an AWG:

1. Select **Window > Instrument Control**.
2. From the **AWG** tab, you can modify the values of the following AWG parameters:

**Table 33: AWG parameters and their description**

Selection	Description	Default value
Sampling Rate	Displays the sampling rate of the AWG.	The default is as set in the AWG.
<a href="#">Interleave (see page 92)</a>	Sets the interleave option to On or Off.	Off
<a href="#">Zeroing (see page 94)</a>	Enabled only when Interleave is set to On.	Disabled
Ch 1	Select this to receive the output from channel 1.	This depends on the channel present on the AWG.
Ch 2	Select this to receive the output from channel 2.	This depends on the channel present on the AWG.
Amplitude (Vpp)	Displays the amplitude of the selected channel. Change the amplitude in this field to change the amplitude on the channel.	The default is as set in the AWG.
Waveform	Displays the selected waveform name. You can drag and drop the waveform from the Waveform List. When you drag and drop a waveform, the sampling rate is automatically set.	N/A

The following button is available:

**Table 34: AWG options**

Button	Description
Advanced	Opens a dialog box where you can set the advanced AWG control options.

3. When you click **Advanced**, the following options are available for each channel:

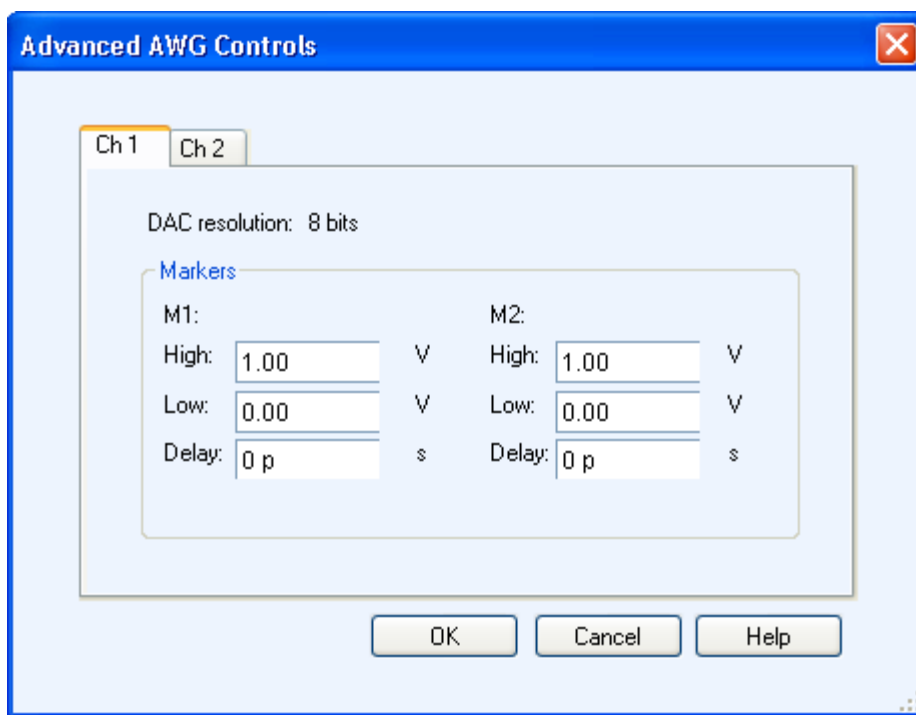


Table 35: Advanced AWG parameters

Selection	Description
<b>DAC Resolution</b>	
DAC Resolution	Displays the channel DAC resolution that is set in the AWG.
<b>Markers (M1 and M2)</b>	
High (V)	Enter the high value for the markers.
Low (V)	Enter the low value for the markers.
Delay (s)	Enter the maker delay.

**NOTE.** When connected to an AWG5000 series instruments, the DAC resolution is fixed to 14 bits and cannot be changed.



## Connecting to and Controlling an Oscilloscope

SerialXpress can be used to control a connected Tektronix oscilloscope, acquire oscilloscope waveforms into SerialXpress, and transfer it to an AWG.

Follow these steps to find oscilloscopes connected to the AWG on which SerialXpress is running:

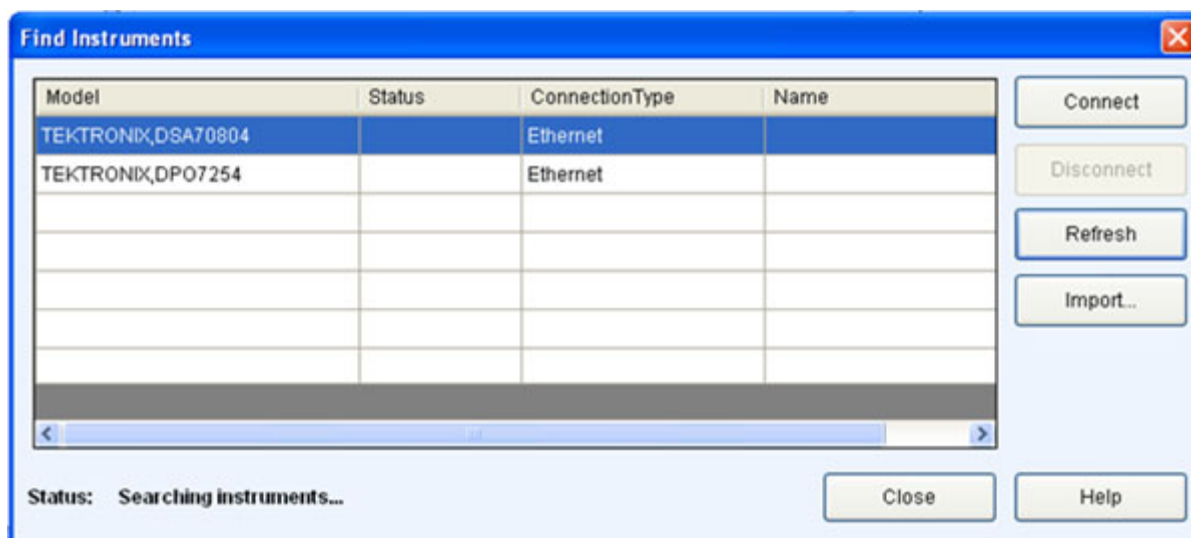
1. Select **Window > Instrument Control**.
2. A table lists the connected oscilloscopes. From the **Oscilloscope** tab, you can modify the values of the following oscilloscope parameters:

---

**NOTE.** *Ensure that the Sampling mode on the oscilloscope is set to Real Time. If the Sampling mode is set to Interpolation (either automatically or manually), the parameter values in SerialXpress Instrument control and the oscilloscope may not match.*

---

3. Click **Find Instruments**. The following dialog box opens.



The table lists the oscilloscopes found along with the name of the model, status (connected or not), and the connection type (Ethernet or GPIB).

4. Select an oscilloscope from the table. Use the following buttons to:

**Table 36: Find instruments options and their description**

Button	Description
Connect	Allows you to connect to the selected oscilloscope in the table. Enabled by default if an oscilloscope is highlighted in the table; disabled if no oscilloscope is highlighted.
Disconnect	Allows you to disconnect the connected oscilloscope. Enabled only when an oscilloscope is connected.
Refresh	Refreshes the list of oscilloscopes.
<a href="#">Import (see page 33)</a>	Opens the <b>Import from Tektronix Oscilloscope</b> dialog box.

5. Click **Connect** to connect to the selected oscilloscope.

**Table 37: Oscilloscope parameters**

Selection	Description
<b>Vertical Settings</b>	
Channel	Displays the channel to which the scale can be set. To change this setting, select another channel.
Scale (V)	Displays the vertical scale set in the oscilloscope for the selected channel. Change the value in this field to change the vertical scale on the connected instrument.
<b>Horizontal Settings</b>	
Scale (s)	Displays the horizontal scale set in the oscilloscope. Change the value in this field to change the horizontal scale on the connected instrument.
Record Length	Displays the record length set in the oscilloscope. Change the value in this field to change the record length on the connected instrument.
Sampling Rate (S/s)	Displays the sampling rate set in the oscilloscope. Change the value in this field to change the sampling rate on the connected instrument.
<b>Acquisition</b>	
Run	Starts the acquisition of data on the oscilloscope.
Stop	Stops the acquisition of data on the oscilloscope.
Single	Sets the oscilloscope to acquire one full record length and then stops.

The following buttons are available in this tab:

**Table 38: Oscilloscope options**

Button	Description
AutoSet	Performs autoset on the oscilloscope.
Refresh Settings	Refreshes the display with the current instrument settings.
Refresh List	Refreshes the connection status of the instruments.
Find Instruments	Finds instruments on the network.



## Zooming Graphs

You can zoom in or zoom out on a graph. Click **Maximize** to display the graph in a large window. You can zoom in on a plot by selecting an area of interest. SerialXpress supports the following graphs:

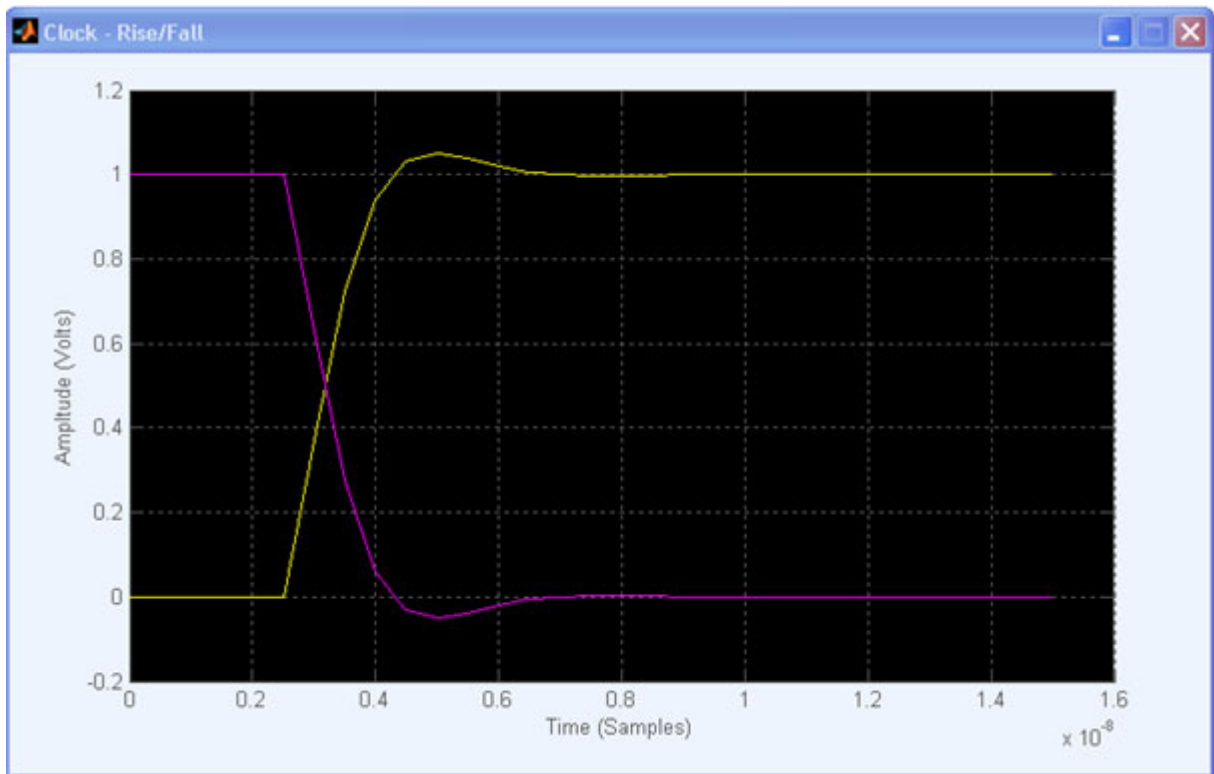
- [Rise/Fall \(see page 78\)](#)
- [Simulated Data Signal \(see page 79\)](#)
- [Random Jitter \(see page 80\)](#)
- [Periodic Jitter \(see page 81\)](#)
- [Total Jitter \(see page 82\)](#)
- [Normal Eye \(see page 83\)](#)
- [Eye DPO \(see page 84\)](#)
- [TIE \(see page 85\)](#)

You cannot save the graphs. You can only save the graphs by doing a screen capture. You must regenerate a graph using **Compile** every time you change parameter values. The existing graphs are not automatically updated.

For more details, refer to [Graph Setup \(see page 23\)](#).

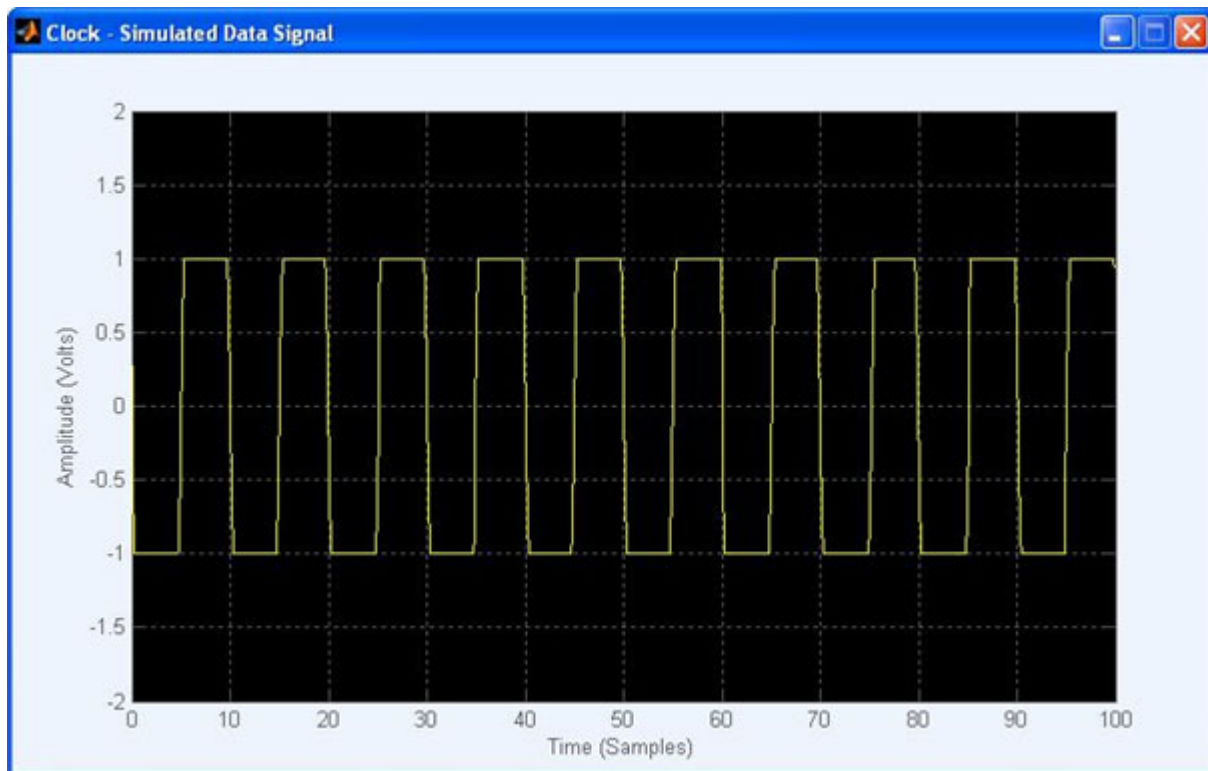
## Rise/Fall

The rise/fall graph shows the plot of Time (Samples) (X-axis) and Amplitude (Volts) (Y-axis).



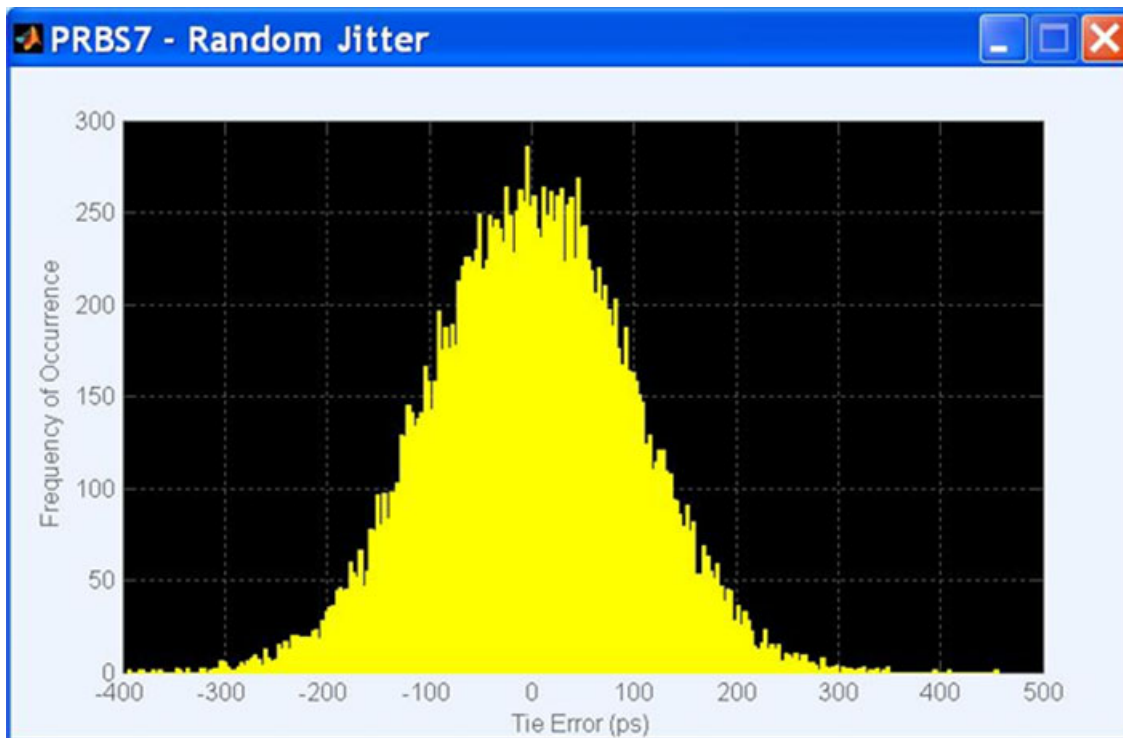
## Simulated Data Signal

The simulated data waveform graph shows the plot of Time (Samples) (X-axis) and Amplitude (Volts) (Y-axis).



## Random Jitter

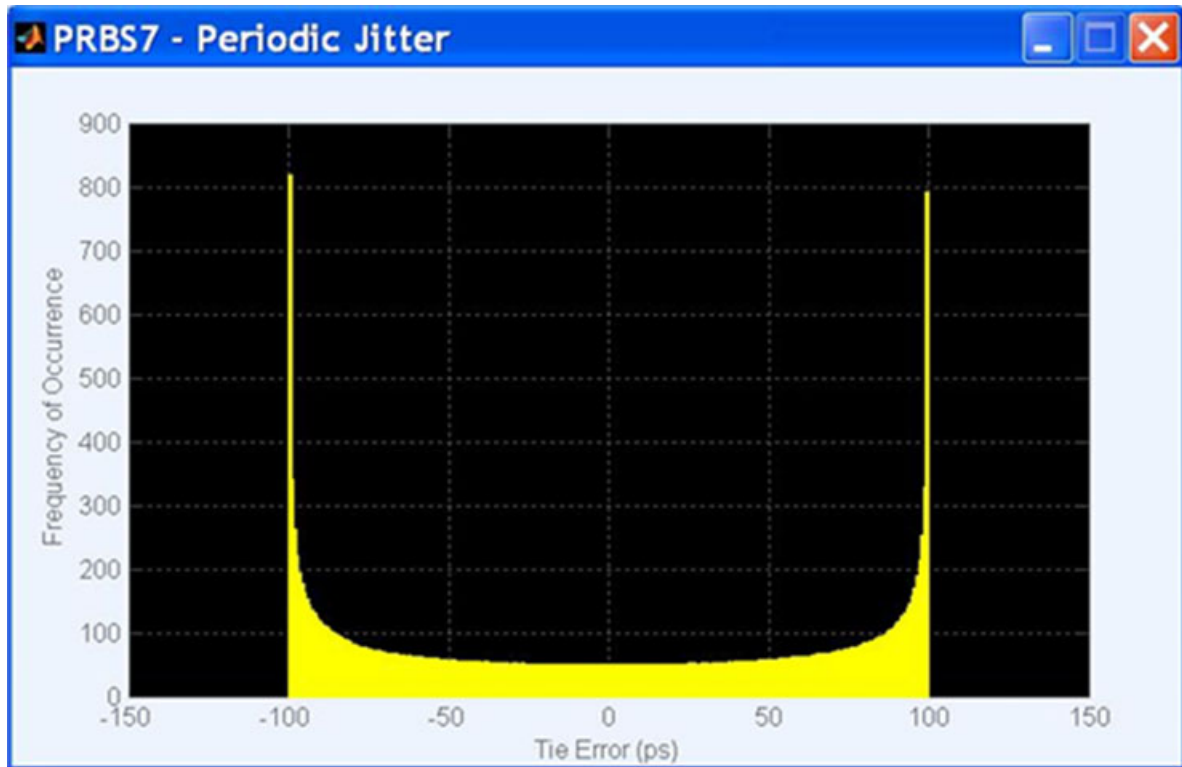
The random jitter graph shows the plot of Tie Error (ps) (X-axis) and Frequency of Occurrence (Y-axis).





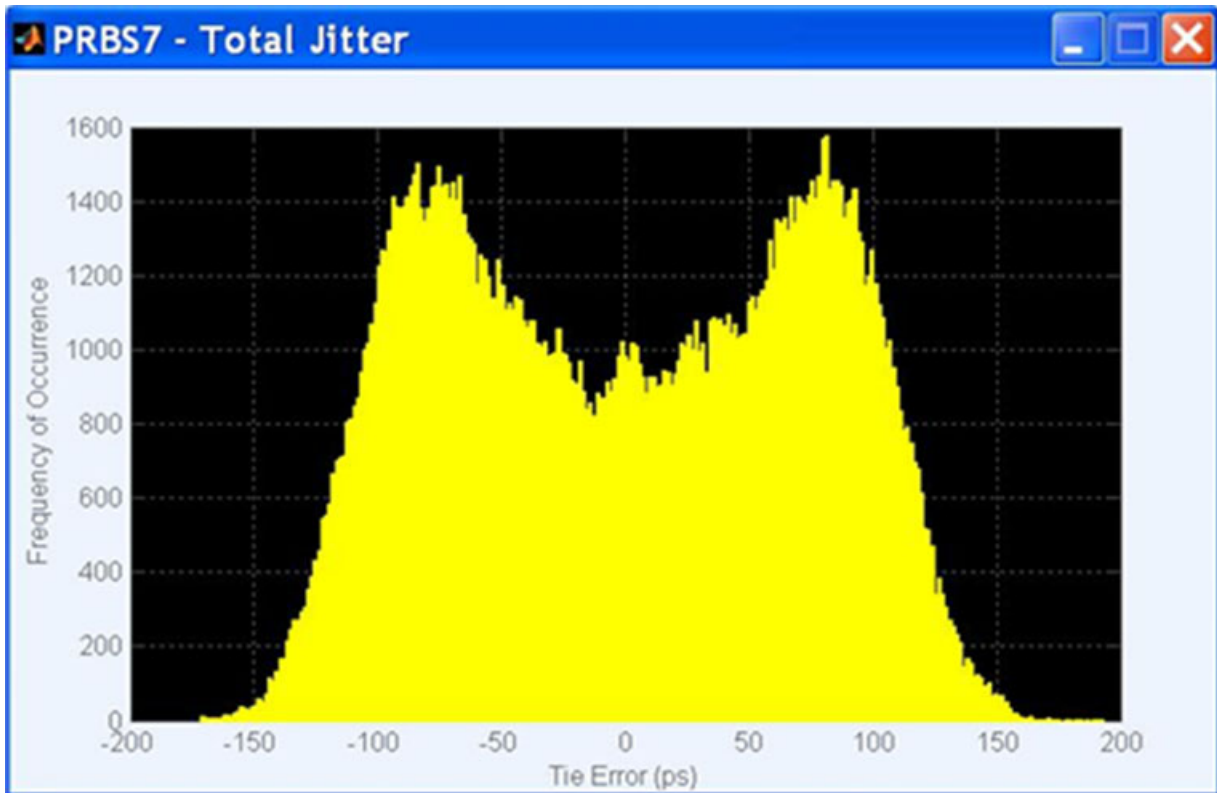
## Periodic Jitter

The periodic jitter graph shows the plot of Tie Error (ps) (X-axis) and Frequency of Occurrence (Y-axis).



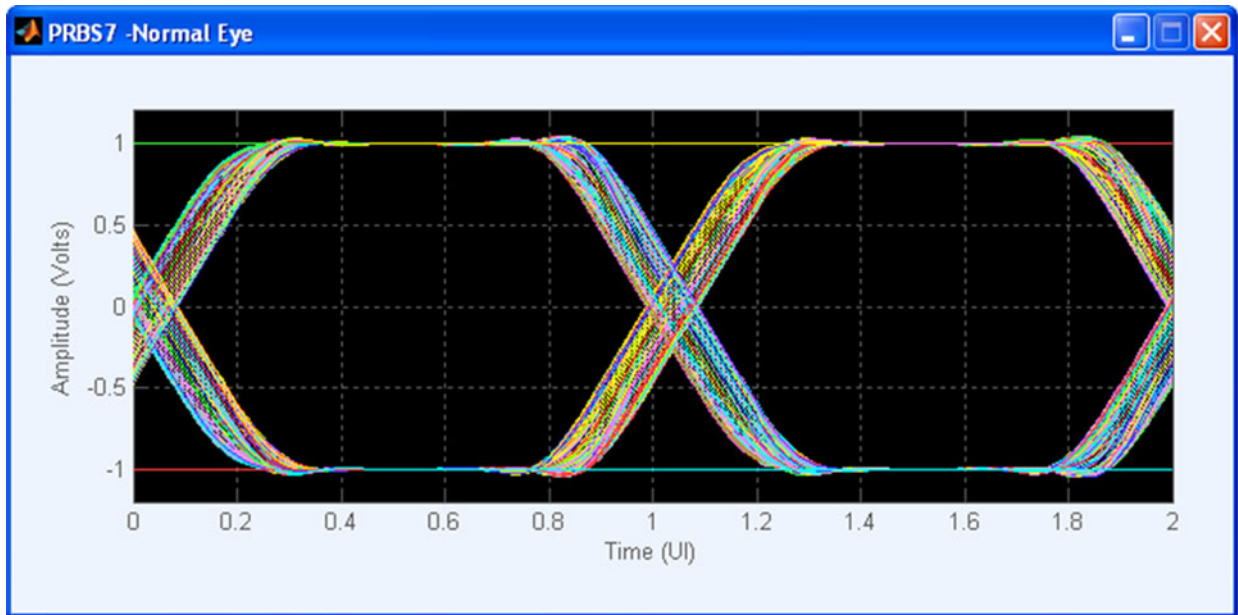
## Total Jitter

The total jitter graph shows the plot of Tie Error (ps) (X-axis) and Frequency of Occurrence (Y-axis).



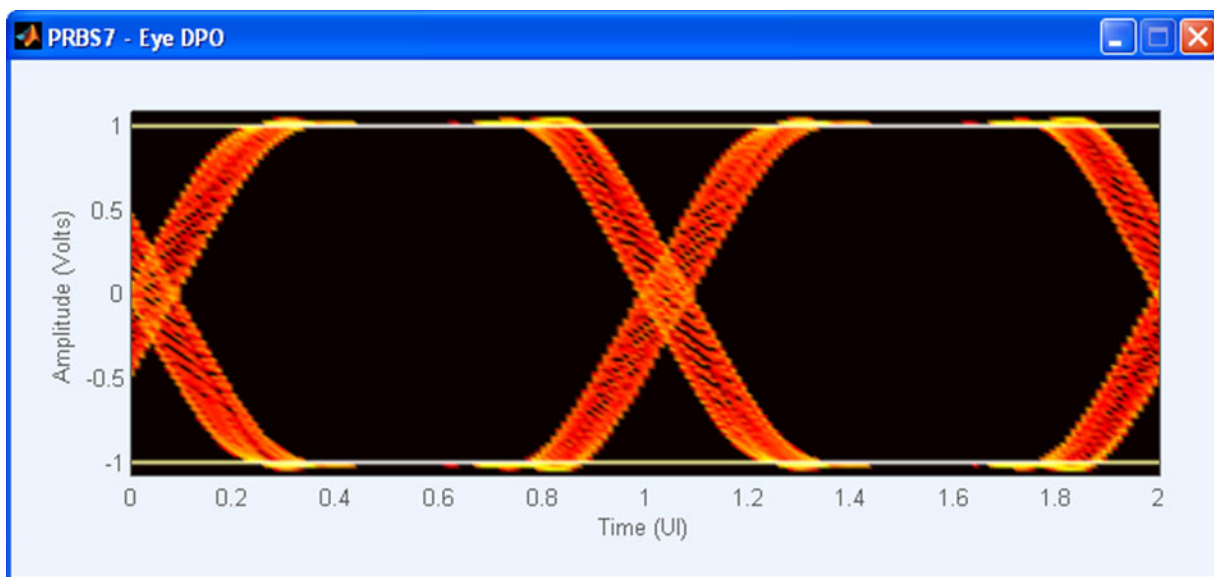
## Normal Eye

The normal eye graph shows the plot of Time (UI) (X-axis) and Amplitude (Volts) (Y-axis).



## Eye DPO

The eye DPO graph shows the plot of Time (UI) (X-axis) and Amplitude (Volts) (Y-axis).



The following table shows the summary of the various jitter parameters used to create the waveform:

	UI	ps
Rj	0.050	16.667
Dj	0.000	0.000
Pj	0.000	0.000
ISI	0.000	0.000
DCD	0.000	0.000
Tj	0.700	233.333

In the Eye DPO plot, all the jitter parameters that are set in the application are shown in a table.

The total jitter is calculated using the formula  $Tj = (14 * Rj) + Dj$  where,

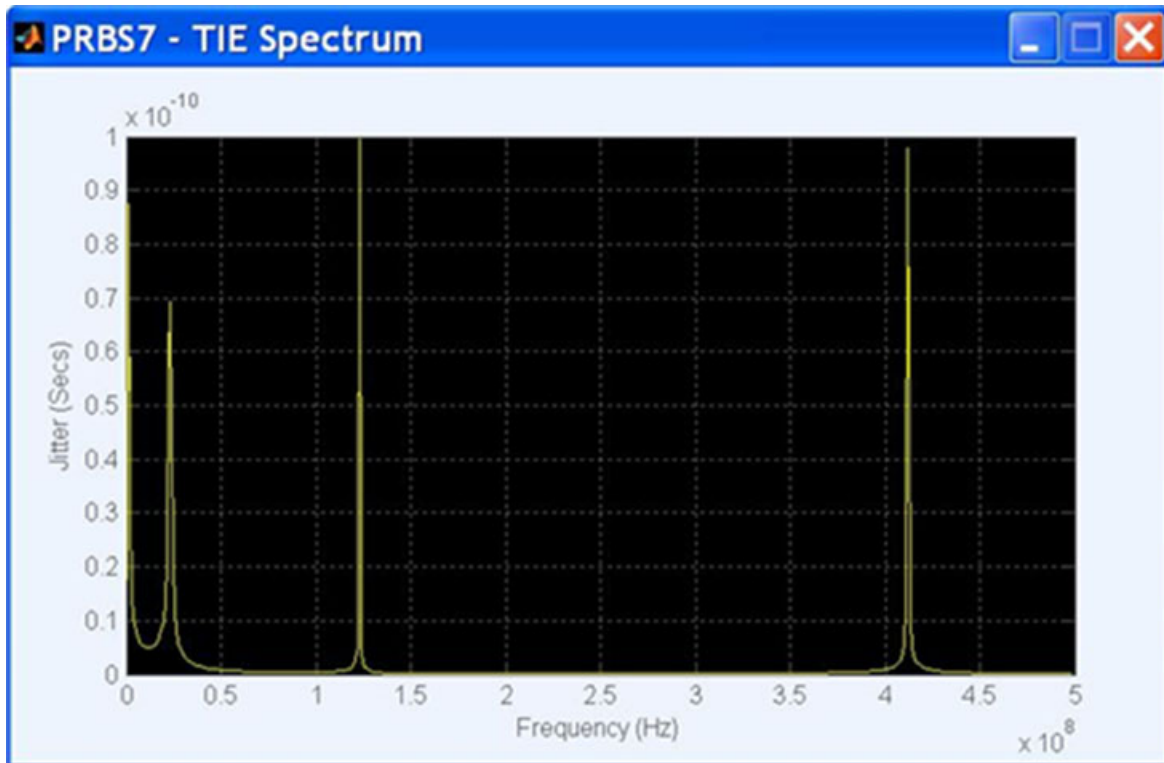
Tj is the Total Jitter at a specified Bit Error Rate (TJ@BER). This extrapolated value predicts a peak-to-peak jitter that will only be exceeded with a probability equal to the BER (TJ (1E-12)).

Rj is the RMS value of total Random Jitter.  $Rj = \sqrt{Rj1^2 + Rj2^2 + Rj3^2}$ , where Rj1, Rj2, and Rj3 are RMS values of three independent, band limited, zero mean, and Gaussian distributed jitters.

Dj is the Deterministic Jitter, which is the sum of Periodic Jitter (Pj), Inter Symbol Interference (ISI), and Duty Cycle Distortion (DCD).

## TIE

The TIE graph shows the plot of Frequency (Hz) (X-axis) and Jitter (Secs) (Y-axis). This plot shows the raw Fast Fourier Transform (FFT) of the TIE.





## Error Messages

The following table lists the error codes for the application.

**Table 39: Error messages for SerialXpress**

Error message	Description	Solution
Not ready.	SerialXpress application is not ready.	Start SerialXpress.
SerialXpress instance is already running.	Second instance of SerialXpress is started.	Check task manager if the SerialXpress application is already running. If the application is running, stop that process and start SerialXpress again.
Trial period has expired. You cannot transfer and save the waveform.	The total number of trials of 10 is exceeded.	Enable the function (to transfer or save the waveform) with an option (license) key.
Invalid file name.	File name is not according to SerialXpress requirements.	Apply Microsoft Windows file naming conventions.
File does not exist.	The specified file name does not exist.	Ensure that the file path and name are correct.
Directory does not exist.	The specified directory is incorrect.	Browse the correct directory instead of entering the path.
Unable to compile waveform.	The application fails to create the waveform.	Ensure that the base data size does not exceed 2.5 MB.
DTG file import failed.	Either the file is corrupt or DTG file format is incorrect.	Ensure that the DTG file format is correct and that the file is not corrupt.
Waveform name cannot be empty.	The waveform name is not specified.	Specify a waveform name that does not exceed 32 characters.
No selected waveform to save.	No waveform has been selected to save.	Select a waveform to save.
Waveform name specified already exists.	The same waveform name is specified.	Do one of the following: <ul style="list-style-type: none"> <li>■ Ensure that the waveform name is different.</li> <li>■ Ensure that the <b>Overwrite</b> option is enabled in the <b>Compile Settings</b> dialog box.</li> </ul>
Symbol is not valid	The symbol entered is invalid and its binary code is not defined.	Reenter a valid symbol. For valid symbol values, refer to the <i>Setting the Base Pattern</i> section. ( <a href="#">Selecting a User Pattern</a> )
Batch setup settings error.	The <b>Start</b> value of either Random Jitter or Periodic jitter is greater than the <b>End</b> value.	Ensure that the <b>Start</b> value is less than the <b>End</b> value in the <b>Batch Compile Setup</b> dialog box.

Table 39: Error messages for SerialXpress (cont.)

Error message	Description	Solution
Both random jitter and periodic jitter are disabled. Batch compilation will generate a single waveform without any jitter.	The <b>Batch Compile Setup</b> dialog box has both Random and Periodic Jitter disabled.	Ensure that one or both Random and Periodic Jitters are enabled.
Error on parsing PRBS polynomial.	The PRBS polynomial syntax is incorrect.	Enter the correct PRBS polynomial.
Failed to read data or invalid format.	File format is incorrect.	Apply valid file format.
AWG is not available.	The <b>Advanced</b> option in <b>Instrument Control</b> tab has been clicked without starting the AWG application.	Ensure that AWG application is started before starting SerialXpress.
Unauthorized access permission.	Permission not available to read a file.	Ensure that the file has read permission.
Polynomial length exceeds the maximum.	The order of the polynomial is greater than the specified value.	Ensure that the order of the polynomial is less than or equal to 18.
Unable to read or Invalid SSC custom profile file.	Either the SSC custom profile file is corrupt or file format is incorrect.	Do one of the following: <ul style="list-style-type: none"> <li>■ Ensure that the file is not corrupt.</li> <li>■ Ensure that the custom SSC profile is according to the format specified. <a href="#">Custom SSC (see page 96)</a></li> </ul>
No transition exists.	Either the input base pattern has all zeroes or all ones, or the encoding scheme is set to NRZ.	Do one of the following: <ul style="list-style-type: none"> <li>■ Enter patterns with a combination of zeroes and ones.</li> <li>■ Ensure that the encoding scheme is set to 8B10B.</li> </ul>
Setting waveform to the channel failed.	The application failed to load the waveform to the AWG channel.	Do one of the following: <ul style="list-style-type: none"> <li>■ Ensure that the waveform exists in the AWG waveform list.</li> <li>■ Ensure that the waveform size does not exceed the AWG memory limit.</li> <li>■ Ensure that the channel name is valid.</li> </ul>
Failed to set the sampling rate on the AWG.	The application failed to set the sampling rate on the AWG.	Do one of the following: <ul style="list-style-type: none"> <li>■ Ensure that the sampling rate is within the AWG limits.</li> <li>■ Ensure that the <b>Clock</b> is set to <b>Internal</b> and the <b>Reference</b> is set to either <b>Internal</b> or <b>External (fixed)</b>.</li> </ul>



**Table 39: Error messages for SerialXpress (cont.)**

Error message	Description	Solution
Failed to set the output to ON for channel.	The application failed to turn the channel state to ON on the AWG.	Ensure that the channel name is valid and has a waveform loaded into it.
Failed to set the run state to ON on the AWG.	The application failed to set the run state to ON on the AWG.	Ensure that the waveforms are loaded to the AWG channels and the application is not waiting for an external trigger.
No TouchStone file selected.	The application does not have a Touchstone file selected in the screen display or remote command during compilation.	Ensure that a valid Touchstone file is selected in S-Parameter Filter screen display or remote command before compiling.
The physical port assigned for single-ended Touchstone file is incorrect.	Same port is selected for both transmitter and receiver.	Ensure that a unique port is selected for each of the physical location.
Polynomial is invalid.	The length of the polynomial expression cannot be zero or greater than 256.	Enter a valid polynomial expression.
Invalid polynomial.	<p>The polynomial expression is incorrect. This happens if:</p> <ul style="list-style-type: none"> <li>■ The polynomial is incomplete.</li> <li>■ The degree of the polynomial is greater than 32 or less than one.</li> <li>■ The polynomial expression contains a negative sign.</li> </ul>	Ensure that the polynomial format is correct.
Repeat count is out of range.	The value has to be an integer from 1 to 1 M.	Enter a valid repeat count value.
Invalid data for Repeat count.	The value in the Repeat count column is invalid. The value has to be either an integer value from 1 to 1 M or "Infinite".	Enter a valid repeat count value or Infinite.
Go To index should be different from the selected index.	The value specified in the Go To column cannot be same as the selected sequence index.	Specify a valid sequence element index.
Go To index is out of range.	The value specified in the Go To column is invalid and is not within the sequence range.	Specify a valid sequence element index.

**Table 39: Error messages for SerialXpress (cont.)**

Error message	Description	Solution
Total memory occupied by all the sequence waveforms is more than the AWG memory.	The memory occupied by the sequence waveforms exceeds the maximum AWG memory and compilation stops.	Do one of the following to proceed with compilation: <ul style="list-style-type: none"> <li>■ Delete unwanted waveforms in the AWG.</li> <li>■ Reduce the sequence length in the application.</li> <li>■ Reduce the waveform parameters.</li> </ul>
No aggressor selected for s8p.	Aggressor pattern file is not selected when aggressor signal is a Pattern file.	Select a pattern file before compilation.
Error in cascading s8p file.	The selected files have different data types which result in all zero co-efficients.	Select the same data type in the application as that of the S-Parameter file selected (Single-ended or Differential).
The S-parameter file of sequence index (n) is different from the other sequence element.	Each sequence element is of a different type.	Select the same S-parameter file type for all the files (s1p, s2p, s4p, or s8p).
Too many pattern files to add. Cannot exceed maximum sequence definition of 1000.	The number of sequence elements added exceeds 1000.	Reduce the sequence elements in the application.
Invalid data format in S-parameter file.	Either an invalid S-parameter file is selected or the data type in the Touchstone file is different from the one selected in the application.	Do one of the following: <ul style="list-style-type: none"> <li>■ Select a valid S-parameter file.</li> <li>■ Select the same data type (Single-ended or Differential).</li> </ul>
The number of waveforms than can be generated by batch compile cannot exceed 500.	The number of waveforms added exceeds 500 in batch compile.	Do one of the following: <ul style="list-style-type: none"> <li>■ Reduce the magnitude of the random and periodic jitters.</li> <li>■ Increase the increment of the random and periodic jitters.</li> </ul>
Batch compile cannot be applied to idle state elements.	Idle state elements cannot be batch compiled.	Disable batch compile for the idle state elements.
Insufficient SPUI for PWM waveform generation.	The minimum SPUI value required is 4 to generate a PWM waveform. For best results use 6 SPUI or more.	Enter a valid SPUI value.
Invalid combination of parameters: Use either PWM or 4-PAM but not both.	Both PWM and 4-PAM encoding cannot be selected.	Select either PWM or 4-PAM encoding to generate a waveform.
Invalid combination of parameters: The number of input bits should be even.	While using 4-PAM encoding, the length of the input pattern must be an even number.	Enter a valid input pattern.

**Table 39: Error messages for SerialXpress (cont.)**

Error message	Description	Solution
Invalid data format in S-parameter file. The coefficients are all zeros.	The forward transmission co-efficients in the file are all zeros. This channel cannot be emulated.	Enter a valid input data.
Waveform Generation Failed. Try with reduced jitter parameters.	This error message is caused by conflicting requirements of various jitter parameters.	Try reducing one of the dialed jitter parameters, such as Random Jitter (Rj), Periodic Jitter(Pj), and SSC

## Shortcut Keys

**Table 40: Shortcut keys**

Menu/Menu item	Shortcut key
File	Alt+F
File > Open Setup	Ctrl+O
File > Save Setup	Ctrl+S
File > Restore Default Setup	Ctrl+N
View	Alt+V
Configure	Alt+C
Waveform	Alt+W
System	Alt+S
Window	Alt+I
Help	Alt+H

## PRBS Editor Starting Values

The following table gives the initial shift register values and the PRBS polynomial expression:

**Table 41: Initial shift values and PRBS polynomial expressions**

PRBS	Shift register initial value	PRBS polynomial expression
PRBS 7	1 1 1 1 1 1 1	$X^7+X^6+1=0$
PRBS 9	1 1 1 1 1 1 1 1 1	$X^9+X^5+1=0$
PRBS 15	1 1 1 1 1 1 1 1 1 1 1 1 1 1 1	$X^{15}+X^{14}+1=0$
PRBS 16	1 1 1 1 1 1 1 1 1 1 1 1 1 1 1 1	$X^{16}+X^{14}+X^{13}+X^{11}+1=0$

## AWG Specifications

For information on the specifications of the AWG5000 and AWG7000 series instruments, refer to the following documents:

- AWG70000 Series Arbitrary Waveform Generators Specifications and Performance Verification Technical Reference, Tektronix part number 077-0780-xx.
- AWG5000 Series Arbitrary Waveform Generators Specifications and Performance Verification Technical Reference, Tektronix part number 071-2082-xx.
- AWG5000B Series Arbitrary Waveform Generators Specifications and Performance Verification Technical Reference, Tektronix part number 071-2486-xx.
- AWG5000C Series Arbitrary Waveform Generators Specifications and Performance Verification Technical Reference, Tektronix part number 077-0455-xx.
- AWG7000 Series Arbitrary Waveform Generators Specifications and Performance Verification Technical Reference, Tektronix part number 071-1853-xx.
- AWG7000B Series Arbitrary Waveform Generators Specifications and Performance Verification Technical Reference, Tektronix part number 071-2487-xx.
- AWG7000C Series Arbitrary Waveform Generators Specifications and Performance Verification Technical Reference, Tektronix part number 077-0456-xx.

You can view the document by selecting **Start > All Programs > Tektronix > AWG > Documentation**.

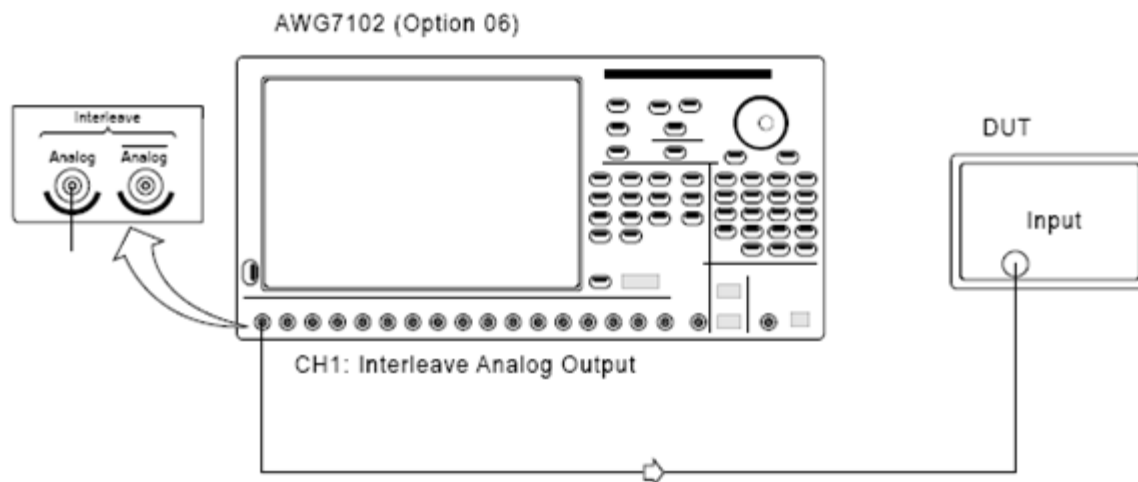
## Interleave (AWG7000 Series only)

The AWG7000 with Option 06 supports the interleaving mode. The following table shows the amplitude and sampling rates for the interleaving and non-interleaving modes.

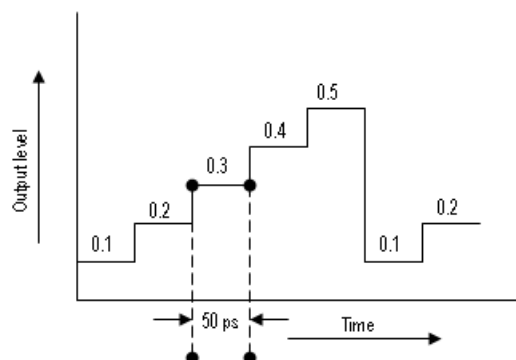
**Table 42: Amplitude and sampling rates in non-Interleave and interleave modes**

Non-Interleaving		Interleaving	
Amplitude (min, max)	Sampling rate (min, max)	Amplitude (min, max)	Sampling rate (min, max)
500 mVpp, 1 Vpp	10 MS/s, 10 GS/s (for AWG7102)	500 mVpp, 1 Vpp	10 GS/s, 20 GS/s (for AWG7102)
	10 MS/s, 12 GS/s (for AWG7122B and AWG7122C)		12 GS/s, 24 GS/s (for AWG7122B and AWG7122C)
	10 MS/s, 8 GS/s (for AWG7082C)		8 GS/s, 16 GS/s (for AWG7082C)

In the Interleaving mode, the output is available in a separate interleave connector as shown in the figure.



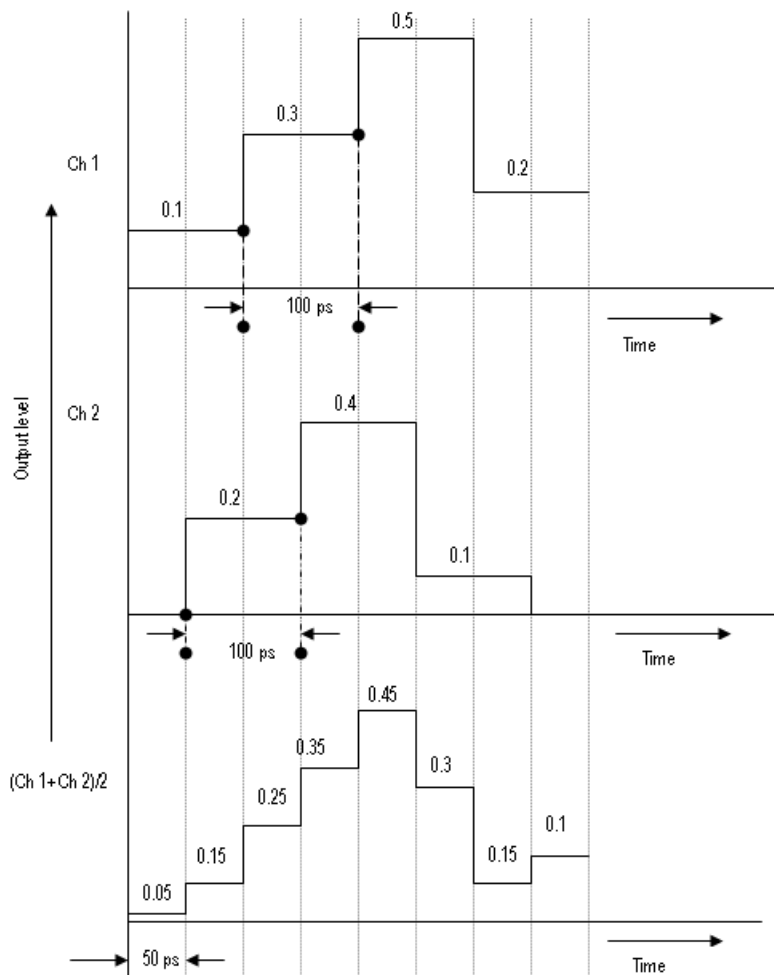
As an example, in the non-interleave mode let the sampling rate be 20 GS/s and the original amplitude samples be 0.1, 0.2, 0.3, 0.4, 0.5, 0.1, 0.2. This can be represented graphically as shown here.



In the interleave mode, alternate samples are output from each channel. That is, the samples are distributed between the two channels as shown:

Ch1	Ch2
0.1	0.2
0.3	0.4
0.5	0.1
0.2	0

This can be represented graphically as shown.



## Zeroing

When Interleave is on, you can turn Zeroing on or off to enhance the available bandwidth. This function is available only when Interleave is available. If you compose waveform data that is divided into two channels, the zeroing function allows you to select whether you want to handle each waveform as RZ (Return to Zero) or NRZ (Non Return to Zero).

If you turn the zeroing function on, the bandwidth increases. However, spurious characteristics will worsen (increase in the frequency spectra that should not be output) and the amplitude range will be halved.

## Parameter Definitions

Definitions of the jitter and time related parameters are given in the following table:

**Table 43: Jitter/Time parameters and their description**

Parameters	Description
<b>Jitter</b>	
RJ	Random Jitter is jitter that does not exhibit deterministic behavior and is not bounded. It can be described by a Gaussian probability distribution. It is characterized by standard deviation value (RMS).
PJ	Periodic Jitter is the portion of the deterministic jitter that is periodic, but for which the period is not correlated with any data in the waveform. It is measured by peak-to-peak variation and frequency.
DCD	Duty Cycle Distortion is the portion of the deterministic jitter directly correlated with waveform polarity (the difference in the positive edges and negative edges).
Noise	This is a type of additive <a href="#">noise (see page 106)</a> that modifies the vertical amplitude of the serial data and contributes to the jitter.
<b>Time</b>	
Rise Time	Elapsed time between the low reference level crossing and the high reference level crossing on the rising edge of the waveform. It is measured in time units between the 10% and 90% levels or between the 20% and 80% levels.
Fall Time	Elapsed time between the high reference level crossing and the low reference level crossing on the falling edge of the waveform. It is measured in time units between the 10% and 90% levels or between the 20% and 80% levels.

## About Calibration

SerialXpress creates pre-distorted waveforms with precise amount of distortion. The types of distortion can include random jitter, ISI, and others. The AWG generates these waveforms from the SerialXpress and transmits them to the DUT through a cable. These generated waveforms are measured on the oscilloscope. If the resulting waveform is not as expected, it could be due to distortion caused by either inherent jitter within the AWG or the characteristics of the transmitting cable. Calibration minimizes the errors in random jitter.

Calibration is performed on a specific AWG, oscilloscope, and associated cable and fixtures with a defined sampling rate and data rate. Changes in any of these requires recalibration.

Error is the deviation between the expected result and the actual result.

The calibration data is saved as `sxc` file.

`sxc` is a custom format binary file which includes correction information on `Rj` and `Pj`.

## About Spread Spectrum Clocking (SSC)

Spread Spectrum Clocking (SSC) is the technique of modulating the clock frequency to minimize electro magnetic induction (EMI) effects. SSC is generated with a profile having a frequency and frequency deviation. The frequency deviation is specified in ppm. The available SSC profiles are sinusoidal, triangle, and custom.

---

**NOTE.** *To generate integer cycles of the SSC profile, the software may alter the frequency of the SSC to meet the memory requirements of the instrument.*

---

### Custom SSC

The custom SSC profile is a comma separated file with the extension `csv`.

The format of the custom SSC is as follows:

`<time>,<ppm><cr><lf>`

`<time>,<ppm><cr><lf>`

.....

.....

The first column represents time and the second column represents deviation in ppm.

where,

`<cr>` refers to carriage return.

`<lf>` refers to line feed.



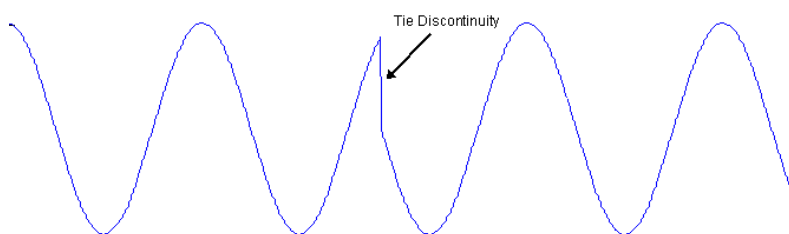
## About Wrap Between Sequence Elements

When a set of jitter waveforms is sent to the AWG sequence, there might be discontinuity in the periodic jitter time domain (TIE plot) or in the encoding disparity between two successive waveforms.

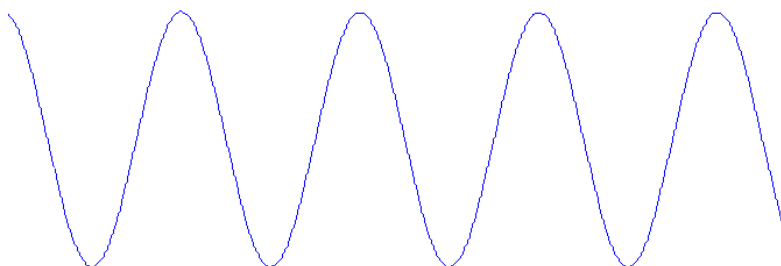
Wrap between sequence elements ensures the continuity of the waveform sample when the sequence execution moves from one sequence element to another. The application may generate multiple waveforms in the AWG corresponding to a single pattern in SerialXpress.

The following examples show waveforms with and without Wrap between sequence elements.

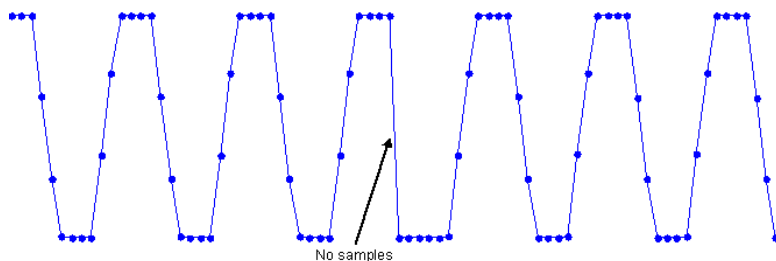
### TIE plot with PJ jitter without wrap between sequence elements

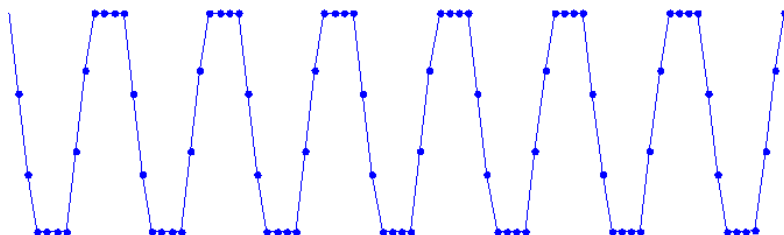


### TIE plot with PJ jitter with wrap between sequence elements



### Waveform plot without wrap between sequence elements



**Waveform plot with wrap between sequence elements**

## About Inter Symbol Interference (ISI)/ISI Scaling

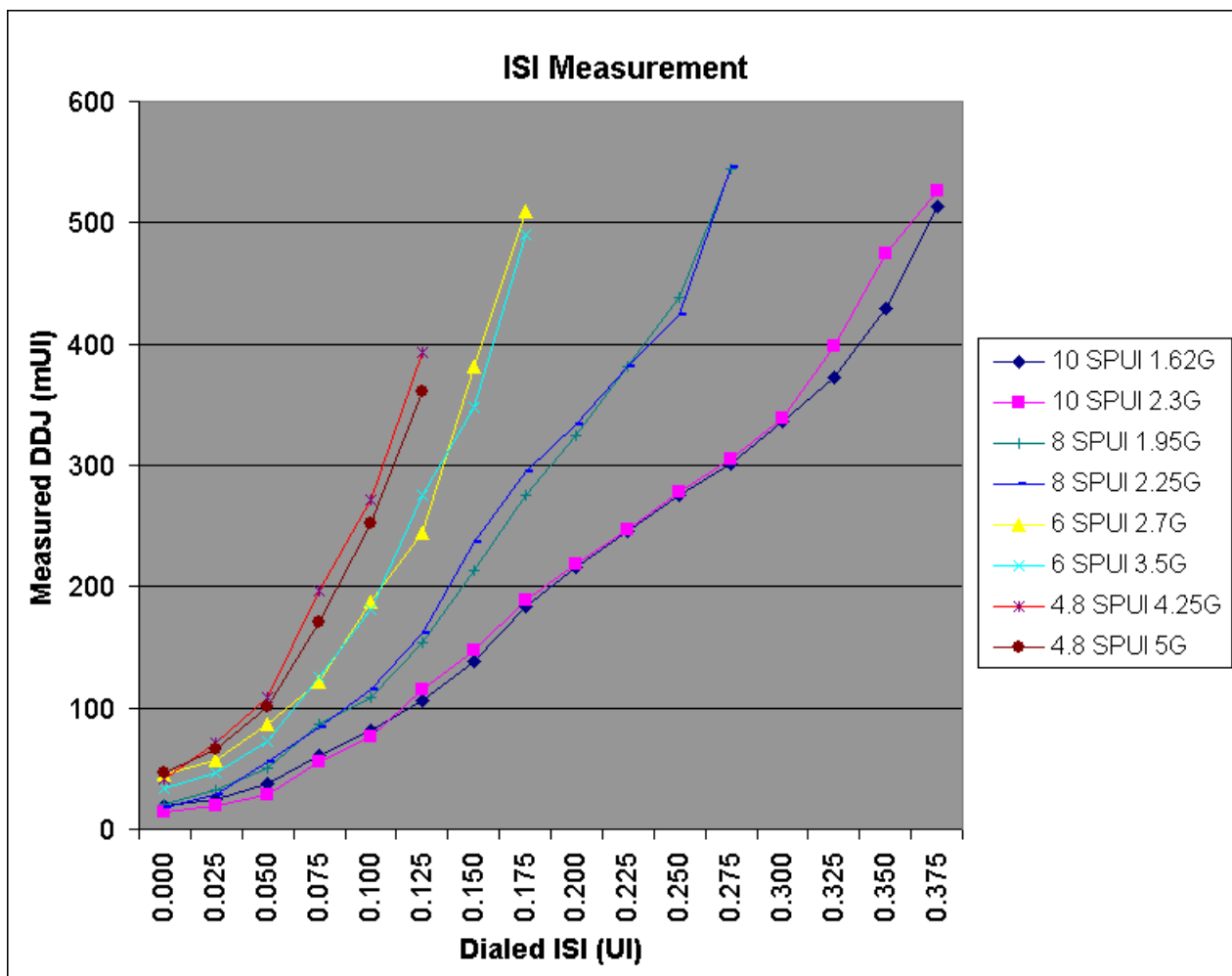
Inter Symbol Interference (ISI) is generated due to the limited bandwidth of the channel. The following are the two ways to generate ISI:

**Method 1:** Using digital filter to simulate the effect of ISI by directly entering the ISI value in the **Channel/Cable** tab

When ISI is 0, no ISI is introduced through the filter. However, the signal will contain some ISI depending on various parameters like bit pattern, rise/fall time, data rate, connecting cables, and so on.

When the value of ISI is increased, the measured ISI increases. The following indicative chart can be used to get the required ISI:

Serial No	Dialed ISI Value (UI)	PRBS 7							
		SPUI=10		SPUI=8		SPUI=6		SPUI=4.8	
		DDJ value (mUI)							
		Data Rate							
		1.62 G	2.3 G	1.95 G	2.25 G	2.7 G	3.5 G	4.25 G	5 G
1	0.000	19	14	21	18	45	33	41	47
2	0.025	25	19	32	29	57	47	71	66
3	0.050	38	29	51	56	86	73	109	101
4	0.075	61	55	87	84	121	125	196	171
5	0.100	82	76	109	115	187	181	272	252
6	0.125	106	115	154	161	245	275	393	361
7	0.150	139	148	214	236	381	348		
8	0.175	183	189	276	295	509	490		
9	0.200	216	219	324	334				
10	0.225	246	247	381	382				
11	0.250	275	278	438	424				
12	0.275	301	305	544	546				
13	0.300	336	339						
14	0.325	373	398						
15	0.350	429	475						
16	0.375	514	526						



### Method 2: Using S-Parameter filter and ISI scaling

The S-Parameter files contains the values of the specific devices used to connect the DUT. When you select an S-Parameter file, the corresponding values of the device are applied to the waveform causing distortion. If you use the cable of the corresponding S-Parameter file instead of the S-Parameter file, the same output is obtained at the DUT.

---

**NOTE.** *ISI scaling is enabled only when you select S-Parameter Filter.*

---

When ISI scaling is 0, the effect of ISI is not seen and the waveform is undistorted.

When ISI scaling is in the range 0–1, the effect of ISI gradually increases. At 1, the effect of ISI is completely introduced thereby causing a distorted waveform.

When ISI scaling is in the range 1–10, the effect of ISI will further increase.

You can see the effect of ISI in the Eye DPO plot and the Data Dependent Jitter (DDJ) can be measured on the oscilloscope. As the data rate and the sampling rate increase, the effect of ISI increases.

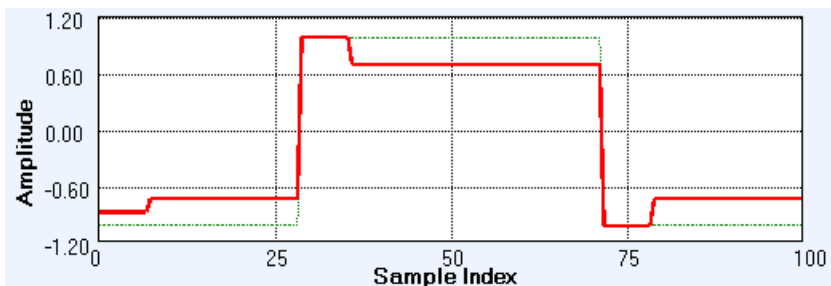
## About Pre/De-Emphasis

You can apply the following pre/de-emphasis and preshoot to a waveform:

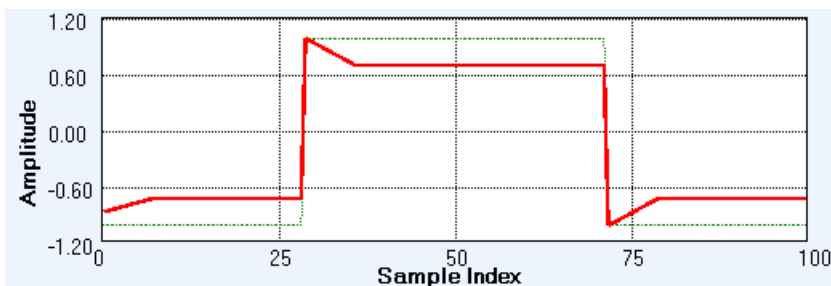
- Pre/De-emphasis only
- Preshoot only
- Pre/De-emphasis and Preshoot

The following three types are available for pre/de-emphasis and preshoot:

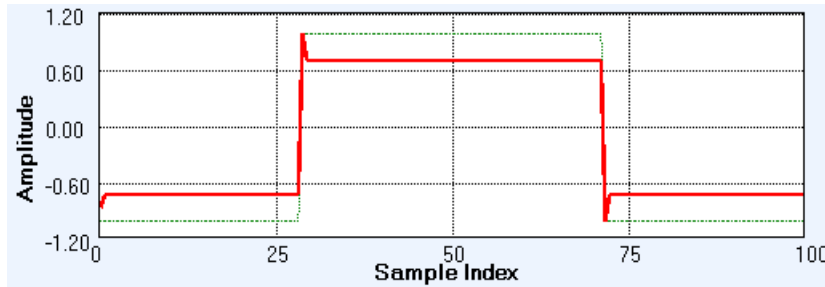
- UI-Constant – A constant value is applied to all the samples in the UI. The following shows an example of UI-Constant:



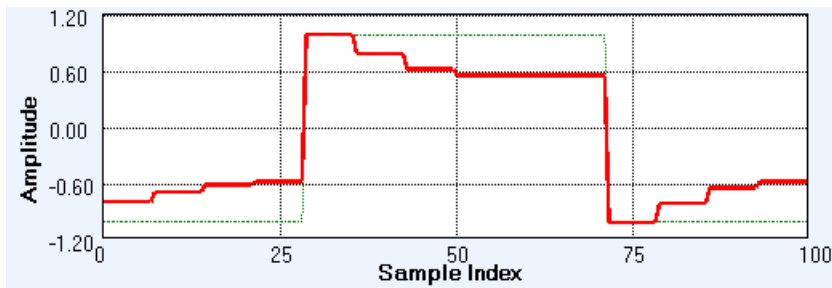
- UI-Linear – Linearly increasing values are applied to all the samples in the UI. The following shows an example of UI-Linear:



- Fractional – The allows you to specify a value for every sample in the UI. The following shows an example of Fractional:



**Multi-tap Pre/De-emphasis.** You can control signal value of more than one UI. The maximum number of taps that can be specified is 5. The following shows an example of multi-tap pre/de-emphasis:



The following equations are used to convert dB to Volt and Volt to dB:

$$V = 10^{(dB/20)} - 1$$

$$dB = 20 * \log_{10}(1 + V)$$

## About Pulse Amplitude Modulation (PAM)

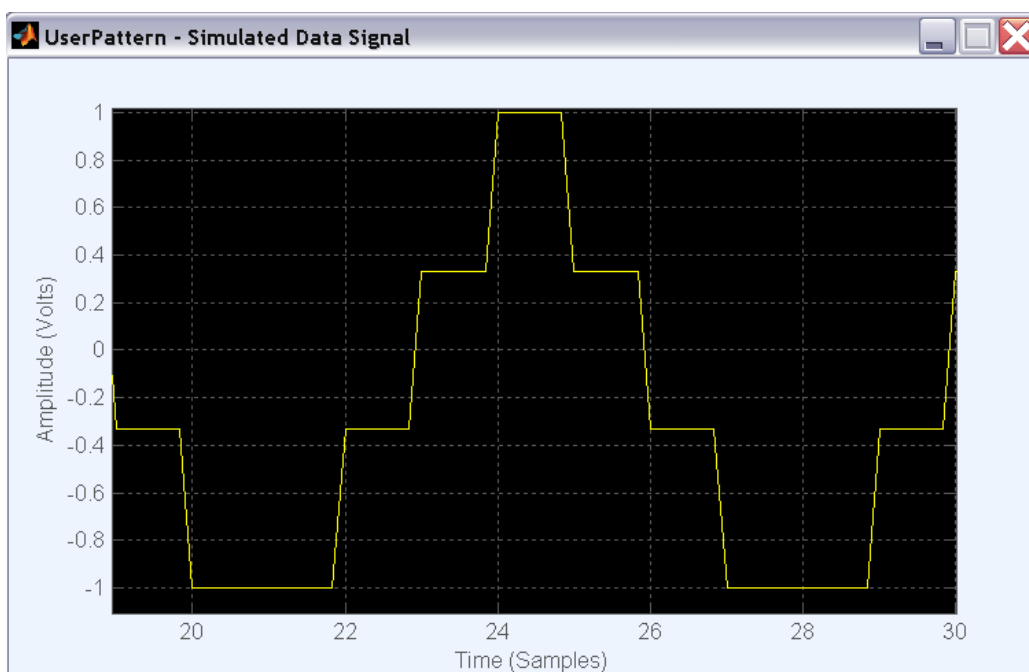
The 4-PAM symbols are represented as [0 1 2 3]. The symbol size 'M' is equal to four, which means that four amplitude levels are assigned to each of these symbols.

**Example.** The peak-to-peak voltage of the signal is 1 V (–0.5 V to +0.5 V).

The four amplitude levels representing [0 1 2 3] of the PAM symbols are [–0.5000 V –0.1667 V 0.1667 V 0.5000 V].

You can assign input data only in Binary format to the 4-PAM symbols.

If the user pattern is 00011011100100, then 4-PAM sequence would be 0 1 2 3 2 1 0, where 2-bits form an 4-PAM symbol. The generated waveform is as shown below:



---

**NOTE.** The length of the input pattern must be an even number to form a 4-PAM symbol. Pre/De-emphasis is not applicable for 4-PAM encoding.

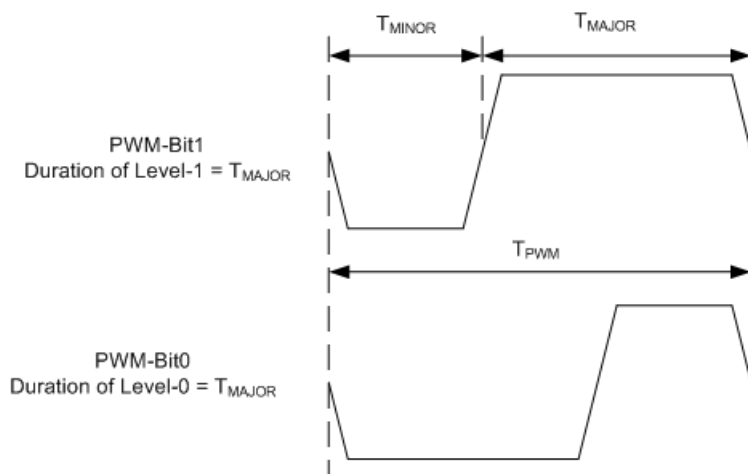
The **Data Rate** in this case refers to the 4-PAM symbol rate.

---

## About Pulse Width Modulation (PWM)

In a NRZ (no-return to zero) signal, level-0 and level-1 represents the states of bit 0 and bit 1.

In a PWM signal, each signal consists of two sub-phases, a level-0 followed by a level-1.



The PWM bit duration is calculated as follows:

$$T_{PWM} = T_{MINOR} + T_{MAJOR}$$

Specify the value of  $T_{MINOR}$ , as a fraction of the UI.

The data rate of the PWM is defined as:

$$F_{PWM} = 1/T_{PWM}$$

While generating a PWM waveform, at least four Samples per Unit Interval (SPUI) are required.

When minimum SPUI = 4,  $SPUI = (x/T\_Minor)$ , where x is an integer.

For example:

If  $T\_Minor = 0.25$ , then the value of SPUI = 4x, that is, 4, 8, 12...

If  $T\_Minor = 0.33$ , then the value of SPUI = 3x, that is, 6, 9, 12...

**Example.** The following example shows how to calculate the values of  $T_{PWM}$ ,  $T_{MINOR}$ , and  $T_{MAJOR}$ .

If the data rate is set to 200 MHz and  $T\_Minor$  is set to 0.25 UI then,

$$T_{PWM} = 1/200 \text{ M} = 5 \text{ nsec}$$

$$T_{MINOR} = 0.25 * T_{PWM} = 1.25 \text{ nsec}$$

$$T_{MAJOR} = (1 - 0.25) * T_{PWM} = 0.75 * T_{PWM} = 3.75 \text{ nsec}$$

## DPOJet Settings

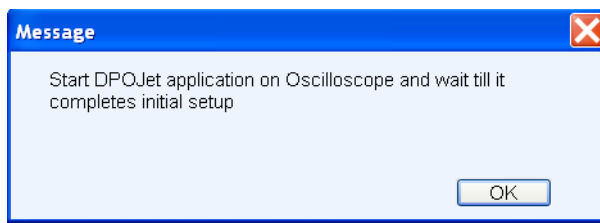
You can do calibration in two ways: Automatic and Manual.

### Automatic

Use the automatic method when SSC is not available in the signal.

Do the following to set up the DPOJet application on the connected oscilloscope:

1. In the SerialXpress application, set the Base Pattern and Compile Settings parameters for calibration.
2. Select **Calibration** from the toolbar.
3. From the list of instruments, highlight an oscilloscope and click **Connect**.
4. In the Calibration Setup group, set the DPOJet Settings to **Automatic**. The following message is displayed:



5. On the oscilloscope, click **Default Setup** and **Autoset** to check if the signal is available.
6. Select **Analyze > Jitter & Eye Analysis > Wizard > One Touch Jitter**.  
DPOJet automatically configures various parameters for optimum performance.
7. In the SerialXpress application, click **OK** in the message box to proceed with calibration.

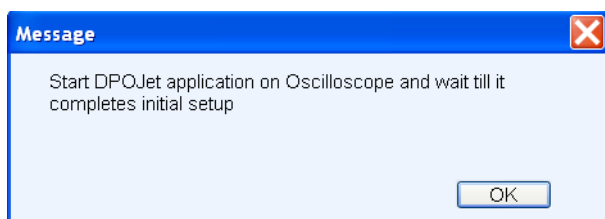


## Manual

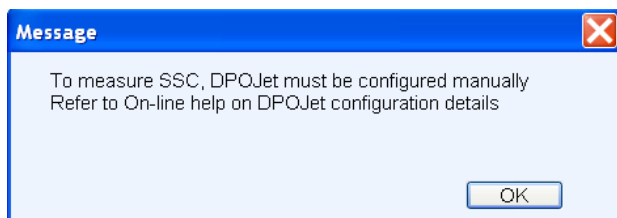
Use the manual method to measure SSC.

Do the following to set up the DPOJet application on the connected oscilloscope:

1. In the SerialXpress application, set the Base Pattern and Compile Settings parameters for calibration.
2. Select **Calibration** from the toolbar.
3. From the list of instruments, highlight an oscilloscope and click **Connect**.
4. In the Calibration Setup group, set the DPOJet Settings to **Manual**.
5. Set the path and file name to create the correction file and select **Apply Calibration**.
6. Click **Calibrate**. The following message is displayed:



7. On the oscilloscope, perform the following steps:
  - Click **Default Setup** and **Autoset** on the oscilloscope front panel.
  - Select **Analyze > Jitter & Eye Analysis > Wizard > One Touch Jitter**.
  - Set the required record length.
8. In the SerialXpress application, click **OK** in the message box to proceed with calibration. The following message is displayed:



9. Configure all the DPOJet parameters manually.
10. In the SerialXpress application, click **OK** in the message box to proceed with calibration.

---

**NOTE.** During calibration, if a warning or an error message appears in the DPOJet application, SerialXpress will not yield correct results.

---

## Noise

### Full Bandwidth Gaussian Noise

SerialXpress supports white Gaussian distribution. Since the noise is generated in the digital domain, the Gaussian distribution is spectrally flat and is half the sampling frequency. The amplitude of this noise can be controlled. The noise generated is independent for each compilation.

### Single Tone Noise

SerialXpress supports single tone noise generation. The frequency can be a maximum of half of the sampling frequency.

### Limitation of pattern length on randomness

The noise is created as part of the waveform data. Due to AWG memory limitations, the waveform data has finite length. This limits randomness of the noise. The larger the waveform length, the greater is the randomness of the noise. The AWG7000 supports waveforms up to 64 M samples and hence the noise is random up to this limit. For waveforms greater than 64 M samples, the noise pattern repeats. The AWG70000 supports waveforms up to 16 G samples; the noise is random up to this limit. For waveforms greater than 16 G samples, the noise pattern repeats. This limitation of the AWG pattern length applies to random jitter.

### Impact of noise on a differential waveform

When noise is added to a differential waveform, its amplitude appears doubled. This is because the noise is generated in the application and appears as a waveform output for AWG.

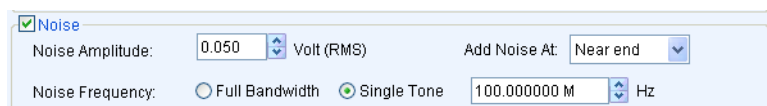
## Generate Common Mode Noise

The following features of SerialXpress are used to generate Common Mode Noise:

- Note the **Invert Bits** selection in the Base Pattern tab.



- Note the **Noise** and **Single Tone** selections in the Transmitter tab.



To generate Common Mode Noise, for example, 200 mV at 33 MHz, complete the following steps:

1. Select a desired Base Pattern
  - a. Clear the **Invert Bits** selection in the Base Pattern tab.
  - b. Set the **Noise Amplitude** to 200 mV and the **Single Tone** frequency to 33 MHz.
  - c. Compile and send the waveform to Channel 1.
2. Use the same Base Pattern as described above.
  - a. Select **Invert Bits** in the Base Pattern tab.
  - b. Set the **Noise Amplitude** to 200 mV and the **Single Tone** frequency to 33 MHz.
  - c. Compile and send the waveform to Channel 2.

The two channel outputs are combined coming out of the instruments as  $[(Ch1 + CH2)/2]$  to generate Common Mode Noise.

## Generate Inter-Channel Skew

The following examples shows how to use the Delay feature in the Compile Settings tab to generate Inter-Channel Skew.

1. Set the Delay to zero and compile the desired pattern.
2. Send the desired pattern to one of the output channels, such as Channel 1.
3. In the Compile Settings tab, change the Waveform Name.
4. Set the Delay to the desired channel skew.
5. Compile and send the waveform to Channel 2.

The Channel 1 and Channel 2 now have the specified Inter-Channel Skew.

## Periodic Jitter - Sample Test Results

The maximum value of periodic jitter that can be set in the **Transmitter** tab for various combinations of data rate and frequency is as follows:

**Table 44: Periodic jitter maximum values**

Data Rate	Frequency of Periodic Jitter								
	10 0 kHz	50 0 kHz	1 MHz	10 MHz	20 MHz	40 MHz	80 MHz	10 0 MHz	50 0 MHz
	Periodic Jitter (Pk-Pk)								
0.5 Gb/s	50 UI	30 UI	18 UI	10 UI	6 UI	2 UI	1 UI	0.25 UI	-
1 Gb/s	50 UI	35 UI	25 UI	15 UI	10 UI	6 UI	2 UI	1 UI	-
2 Gb/s	50 UI	40 UI	35 UI	20 UI	15 UI	10 UI	4 UI	1 UI	1 UI
3 Gb/s	50 UI	50 UI	40 UI	30 UI	20 UI	12 UI	6 UI	2 UI	1 UI
4 Gb/s	50 UI	50 UI	50 UI	40 UI	30 UI	15 UI	8 UI	2 UI	1 UI
5 Gb/s	50 UI	50 UI	50 UI	45 UI	35 UI	16 UI	8 UI	4 UI	1 UI
6 Gb/s	50 UI	50 UI	50 UI	50 UI	40 UI	20 UI	12 UI	4 UI	1 UI

## Main Menu Default States

Table 45: Default states and selection

Item	Options	Default state
<b>Menu Bar</b>		
<b>File</b>	Restore Default Setup	Always enabled
	Open Setup...	Always enabled
	Save Setup	Always enabled
	Save Setup As...	Always enabled
	Import from File...	Always enabled
	Import from Tektronix Oscilloscope...	Always enabled
	Save Data As...	Enabled when a waveform is available in the Waveform List.
	Exit	Always enabled
<b>View</b>	Standard Toolbar	Always enabled
	Status Bar	Always enabled
<b>Configure</b>	Select Mode	Single
	Find Instruments...	Always enabled
<b>Waveform</b>	Compile	Always enabled except when the compilation is in progress.
	Compile Settings	Always enabled
	Graph Setup	Always enabled
<b>Presets</b>	SATA, USB 3.0, HDMI, DisplayPort	—
<b>System</b>	Run	Enabled when SerialXpress is running in the online mode.
	Stop	Enabled when SerialXpress is running in the online mode.
	All Outputs On/Off	Enabled when SerialXpress is running in the online mode.
	Calibration	Always enabled
	Option Installation	Always enabled
<b>Window</b>	Waveform List	Always enabled
	Graph	Always enabled
	Instrument Control	Always enabled
	Overview	Always enabled
	Close All	Always enabled
<b>Help</b>	Help Topics	Always enabled
	Technical Support	Always enabled
	About SerialXpress	Always enabled
<b>Toolbar</b>		

**Table 45: Default states and selection (cont.)**

<b>Item</b>	<b>Options</b>	<b>Default state</b>
Mode	Single, Sequence	Single
Calibration	-	Always enabled
Overview	-	Always enabled
Find instruments	-	Always enabled
Graph Setup	-	Always enabled
Compile	-	Always enabled except when compilation is in progress.
Compile Settings	-	Always enabled
On/Off	-	Enabled when SerialXpress is running in the online mode.
Run	-	Enabled when SerialXpress is running in the online mode.

## Default Values

**Table 46: Default values and selection**

Item	Option	Range/selection	Default value/selection
<b>Base Pattern tab</b>			
Base Pattern	Standard	SATA, SAS, Display Port, PCI-Express, Fiber Channel, General, USB, MIPI	General
	Pattern	Selections are different for different patterns	Clock
	From File	-	Disabled
	User Pattern	-	Disabled
Scrambling	Scrambling	Enabled, Disabled	Disabled
	Polynomial	-	$X^{15}+X^5+X^4+X^3+1$
	Register Initial Value	-	1111111111111111
PWM	-	Enabled, Disabled	Disabled
T_Minor	-	0 UI to 0.5 UI	0.33 UI
Encoding	Scheme	NONE (NRZ), NRZI, 4-PAM	NONE (NRZ)
	8B10B	Enabled, Disabled	Disabled
	Disparity	RD+, RD-	RD+
Signal	Data Rate	500 Kbps to 25 Gbps (AWG70002A)	1 Gbps
		500 Kbps to 50 Gbps (AWG70001A)	
		500 Kbps to 6 Gbps (AWG7000B and AWG7000C without interleave)	
		500 Kbps to 12.0 Gbps (AWG7000B and AWG7000C with interleave)	
		500 Kb/s to 3300 Mbps (AWG5000)	
		500 Kbps to 12 Gbps (Offline)	
	Idle State	53 ns to 100 $\mu$ s	320 ns
Offset	Idle State Offset	-0.5 V to +0.5 V	0 V

Table 46: Default values and selection (cont.)

Item	Option	Range/selection	Default value/selection
Amplitude	Maximum	+0.5 V to –0.25 V	+0.5 V (Offline) Depends on the maximum amplitude value of the AWG (Online)
	Minimum	+0.25 V to –0.5 V	–0.5 V (Offline) Depends on the maximum amplitude value of the AWG (Online)
Rise/Fall	Rise/Fall Time	10/90 or 20/80	20/80
	DCD	0 UI to 1 UI	0 UI
	Rise	0.6/sampling rate to 0.6/data rate	100 ps
	Fall	0.6/sampling rate to 0.6/data rate	100 ps
Marker Settings	Base Pattern	Enabled, Disabled	Enabled
	Clock	Data rate, Data rate/2, Data rate/4, Data rate/8, User-defined	Data rate/2
	High/Low	All High, All Low, Trigger	All High
<b>Transmitter tab</b>			
Periodic Jitter	Magnitude	0 UI to 50 UI	0 UI
	Frequency	10 kHz to Data rate/2	10 MHz
	Phase	0 ° to 360 °	0 °
Random Jitter	Random Seed	1 to 99999	12345
	Rj1 Crest Factor (Peak)	1 to 20	12.732
	Magnitude	0 UI to 0.5 UI	0 UI
	Frequency-Low (Hz)	1 Hz to (Frequency-High – 1 M)	100 kHz
	Frequency-High (Hz)	1.1 MHz to Data rate/2	Data rate/2
SSC	Shape	Sine, Triangle, Custom	Triangle
	Spread	Up, Down, Center, Unequal	Down
	Unequal Spread	0% to 100%	0%
	Minimum Duration	0 µs to 5 µs	0 µs
	Location	20% to 80%	50%
	df/dt	0 ppm/µ to 5000 ppm/µs	0 ppm/µs
	Frequency Deviation	0 ppm to 200000 ppm	4000 ppm
	Frequency Modulation	10 kHz to 500 kHz	33 kHz
Noise	-	0 Volt (RMS) to 0.5 Volt (RMS)	0 Volt (RMS)
Pre/De-emphasis	-	0 dB to 20 dB	0 dB



**Table 46: Default values and selection (cont.)**

Item	Option	Range/selection	Default value/selection
Advanced Setup	-	Enabled, Disabled	Disabled
Add Noise At	-	Near end, far end	Near end
<b>Channel/Cable tab</b>			
ISI	-	0 UI to 1 UI	0 UI
S-Parameter Filter	Select the Mode	Non-Cascading, Cascading	Non-Cascading
	Bandwidth limit – embed/de-embed	None, Auto, Custom	None
	Read from File	-	s4p
	Write to File	-	-
	Sampling Frequency	25 GHz, 50 GHz	25 GHz
	ISI Scaling	0 to 10	1



# Index

## Symbols and Numbers

4-PAM, 39  
8B10B, 39

## A

Advanced settings  
    AWG, 70  
Advanced setup, 60  
Advanced Setup, 35  
Aggressor signal, 63  
Amplitude  
    maximum, 46  
    minimum, 46  
Application  
    basic operations, 7  
    exiting, 11  
    installation, 4  
    ordering, 3  
    overview, 9  
    starting, 11  
    system requirements, 3  
Arbitrary waveform generator  
    (AWG)  
    specifications, 92  
Automatic, 26  
AWG5000  
    control, 70  
AWG5000 and AWG7000 setup  
    Base data signal generation, 6  
AWG7000  
    control, 70  
AWG70000  
    control, 69  
AWG70000 Series configuration  
    utility, 4  
AWG70000A setup  
    Base data signal generation, 5

## B

Bandwidth expansion filter, 27  
Bandwidth limit, 61  
Base data  
    calibration, 51

    creating calibration data, 53  
    creation, 48  
    settings, 39  
Base pattern tab, 39

## C

Calibration, 20  
Calibration setup, 21  
Channel/Cable tab  
    settings, 61  
Common Mode Noise, 107  
Compile button preferences, 26  
Configuration utility  
    AWG70000 Series, 4  
Connecting to an instrument, 67  
Conventions, 2

## D

Data rate, 45  
    default values for various  
        standards, 45  
DCD, 47  
Default values, 111  
Delay, 26  
Delete  
    waveform, 19  
df/dt, 59  
    Location, 59  
    Minimum duration, 59  
Differential, 63  
Directories, 12  
Disparity, 44  
DPOJet Settings, 104  
    Automatic, 104  
    Manual, 105  
Duty cycle distortion, 95

## E

Encoding scheme, 44  
Error messages, 87  
Eye DPO, 84

## F

Fall time, 47  
Far end, 60  
Feedback, 2  
File format  
    10-bit data, 50  
    8-bit data, 49  
    Symbol data, 50  
File name extensions, 12  
Find instruments, 67  
Free trial, 1  
Frequency  
    Deviation, 59  
    Modulation, 59

## G

Graphs  
    types, 24  
    zooming, 77

## I

Idle state, 45  
    Offset, 46  
    waveforms, 45  
Import from Tektronix  
    oscilloscope, 19  
Importing data from a file, 32  
Instrument control, 67  
Instrument setup, 20  
Instruments  
    control, 73  
    control (AWG5000), 70  
    control (AWG7000), 70  
    control (AWG70000), 69  
Inter symbol interference (ISI), 61  
Inter-Channel Skew, 108  
Interleave, 92  
Inverse filter, 62  
ISI scaling, 62

**J**

Jitter parameters  
  settings, 57  
Jitter summary, 84

**M**

Main menu default states, 109  
Marker settings, 47  
Menu bar, 14  
  Configure, 15  
  File, 14  
  Help, 17  
  System, 16  
  View, 15  
  Waveform, 15  
  Window, 17  
Mode  
  Sequence, 20  
  Single, 20

**N**

Near end, 60  
Noise, 95  
  Generating Common Mode  
    Noise, 107  
Noise Frequency, 60  
Normal eye, 83  
NRZ, 39  
NRZI, 39

**O**

Open setup, 32  
Option  
  software, 3  
Option installation  
  license key, 31  
Oscilloscope  
  connect and control, 73

**P**

Parameters  
  definition, 95  
Periodic jitter, 81  
Polynomial  
  scrambling, 43

PRBS editor, 34  
  starting values, 91  
Pre/De-emphasis, 60  
Pre/De-Emphasis, 100  
Pre/De-Emphasis and Preshoot  
  Advanced Setup, 35  
Preshoot, 60  
Pulse Amplitude Modulation  
  (PAM), 102  
Pulse Width Modulation  
  (PWM), 102  
PWM, 43

**R**

Random jitter, 95  
Read from file, 62  
Register initial value, 43  
Related documentation, 2  
Rename  
  waveform, 19  
Repeat, 27  
  Automatic, 27  
  Manual, 27  
Restore default setup, 32  
Rise time, 95  
Rise/Fall, 47

**S**

S-Parameter, 61  
  Cascading, 62  
  Filter mode, 62  
  four-port, 63  
  one-port, 63  
  Touchstone files, 63  
  two-port, 63  
Save data as, 19  
Save setup, 32  
Save setup as, 32  
Scrambling, 43  
Select the mode, 61  
Send to AWG, 19  
Sequence, 54  
Shape, 58  
Shortcut keys, 91  
Show graph, 19  
Signal  
  Patterns, 39

Standards, 39

Simulated data signal, 79  
Sine 1, 30  
Single, 54  
Single-ended, 63  
Spread, 58  
Spread spectrum clocking  
  (SSC), 96  
  Custom, 96  
SPUI, 36  
Status bar, 18

**T**

T\_Minor, 43  
Tap Co-efficients, 37  
TekVISA, 67  
TIE, 85  
Toolbar, 17  
  Batch setup, 28  
  Calibration, 20  
  Compile, 25  
  Compile settings, 25  
  Find Instruments, 23  
  Graph setup, 23  
  On/Off, 28  
  Overview, 22  
  Run, 28  
Total jitter, 82  
Transmitter tab, 57

**U**

Unequal spread, 59  
User pattern, 42  
  Binary, 42  
  Hex, 42  
  Symbol, 42

**W**

Waveform list, 18  
Wrap between sequence  
  elements, 97

**Z**

Zeroing, 94