

4

easy steps...

- 1** Install the DriverLINX[®] Software.
- 2** Install the Board.
- 3** Configure DriverLINX[®].
- 4** Start the Test Panel.

...and your Keithley ISA board will be working for you.

Customer Service: 1-888-KEITHLEY

Free Downloads: www.keithley.com/daqsoftware

Current Virtual Instruments (VIs) for LabVIEW.

ExcelINX - Acquires data directly into an Excel spreadsheet; requires no programming.

VisualSCOPE - Digital storage oscilloscope interface for Windows; requires no programming.

Register On-line: www.keithley.com/register

Browse Application Notes and White Papers: www.keithley.com/daqnotes

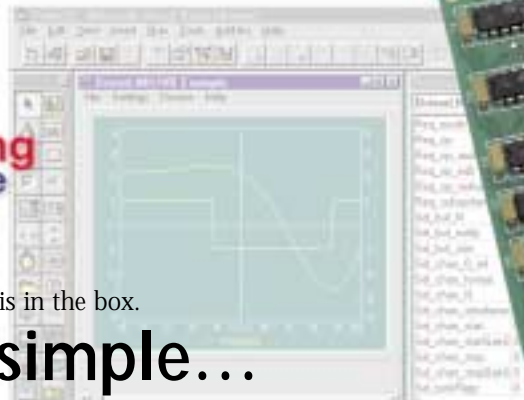
Frequently Asked Questions: www.keithley.com/daqfaq

KEITHLEY

A Greater Measure of Confidence

KEITHLEY

up & running
software



Everything you need is in the box.

Keep it simple...

Load the DriverLINX[®] software *before* you install your new ISA board.

1 Install the DriverLINX® Software.

Place the DriverLINX CD into Your Computer's Drive

Setup will start automatically.
The DriverLINX Browser Introduction screen appears,
followed by the DriverLINX CD
Navigator screen.

Read the On-screen Help Files

1. Select **Read Me First**.
2. Select **Exit**.

Install the Drivers

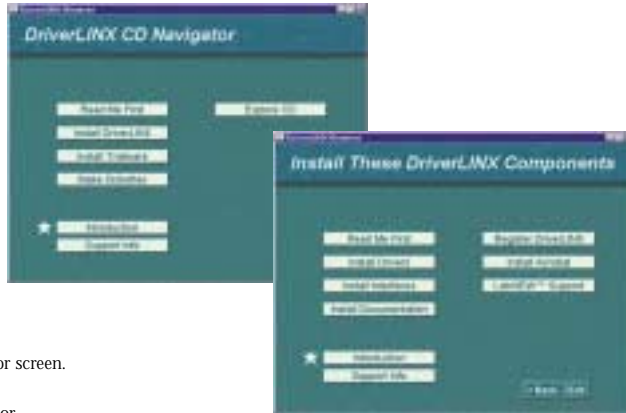
1. Select **Install DriverLINX**.
2. Select **Install Drivers**.
3. Follow the on-screen instructions.

Install the API Interfaces

1. Select **Install Interfaces**.
2. Follow the on-screen instructions.

Exit the Installation

1. Select **Exit** to return to the Navigator screen.
2. Select **Exit** to exit the installation.
3. Select **Done** to exit the CD Navigator.
4. From the "System Settings Changed" dialog box, select **Yes**.
5. Shut down Windows, then power your computer OFF

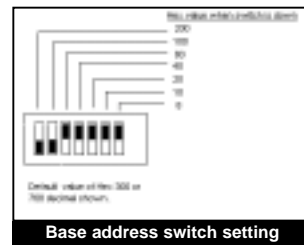


2 Install the Board.

1. Remove the computer chassis cover.
2. Locate an empty expansion slot.
3. Remove the dummy mounting bracket from the selected expansion slot, keeping the mounting screw.
4. Remove the new board from anti-static packaging.
5. Make a note of the switch setups on the board (i.e., DIP switches, jumpers, etc.). To modify the base address of your board, follow diagram on the right.
6. Insert and secure the board into the selected expansion slot.

Note: If your board is a PIO-96J, be sure to feed the cable ends through the rear panel of the computer as you insert the board.

7. Secure the mounting bracket of the board to the chassis using the mounting screw from the dummy mounting bracket.
8. Reinstall the chassis cover.



CAUTION: Your ISA board is sensitive to static discharge. Take care to prevent static discharge before and while handling your ISA card.

3 Configure DriverLINX®.

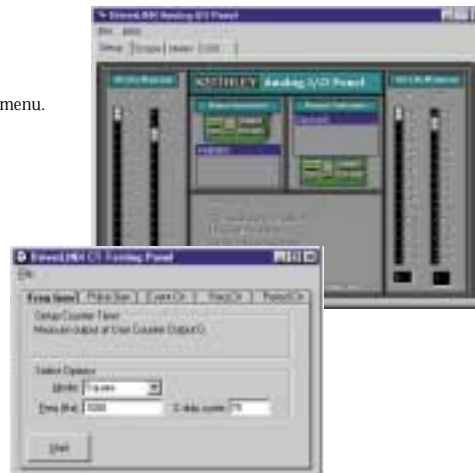
1. Turn ON the computer. The Configuration Wizard will start after boot-up is complete and you log in.
2. Select **Continue**.
3. Follow the on-screen instructions to configure the new board and DriverLINX.
4. Make sure you configure DriverLINX settings noted in step 5 above (i.e., Base Address, Interrupt Level, etc.). If you need to change the switch settings, DriverLINX needs to be changed accordingly.
5. Reboot your computer when instructed to by the Wizard.

4 Start the Test Panel.

1. Click the Windows **Start** tab.
2. Locate the **Programs**→**DriverLINX**→**Test Panels** submenu.
3. Select the appropriate test panel for your card:

If your card is ...	Select ...
Digital I/O	AIO Panel
Analog I/O or Analog/Digital I/O	AIO Panel
Counter/Timer	CTM Panel
4. The starting screen for the selected test panel should appear. If the test panel does not start, refer to the troubleshooting section of the Keithley User's Manual.
5. Close the test panel.

Congratulations! Your DriverLINX software and board are properly installed and working together!



KEITHLEY

Keithley Instruments, Inc. 28775 Aurora Road Cleveland, OH 44139 440-248-0400 Fax: 440-248-6168 <http://www.keithley.com>

PA-730 Rev. A / 6-00