

Tektronix, Inc.
14150 SW Karl Braun Drive
P.O. Box 500
Beaverton, OR 97077
USA

Software Release Notes & Installation Instructions

Important information

These release notes contain important information about version 1.6.0 of the AFG31000 software.

Introduction

This document provides supplemental information regarding the behavior of the AFG31000 software. This information is grouped into six categories:

Revision history	Lists the version of software, the document version, and the date of the software release.
New features / enhancements	Summary of each significant new feature included.
Problem fixes	Summary of each significant software/firmware bug fix
Known problems	Description of each significant known problem and ways to work around it.
Installation instructions	Detailed instructions describing how to install the software.
Appendix A – Previous versions	Contains information about previous versions of the software.

Revision history

This document is periodically updated and distributed with releases and service packs to provide the most up-to-date information. This revision history is included below.

Date	Software version	Document number	Version
11/19/2020	V1.6.0	0771639	01
9/30/2019	V1.5.2	0771639	00
11/15/2018	V1.4.6	-	-

VERSION 1.6.0

New features/enhancements

Issue number	AFG-648
Models affected	AFG31XXX
Enhancement	Added a new SCPI command to get the MAC address of an AFG31XXX instrument: SYSTem:MACADdRes?.

Problem fixes

Issue number	AFG-471
Models affected	AFG31XXX
Symptom	System could crash when running Instaview and then immediately changing the system language setting.
Resolution	This issue has been corrected.
Issue number	AFG-474
Models affected	AFG31XXX
Symptom	Step 9 of the firmware installation section of the User's manual is incorrect.
Resolution	This issue has been corrected.
Issue number	AFG-484 / AR63489
Models affected	AFG31XXX
Symptom	A previously-installed feature license will disappear if the system time zone setting is changed to more than two of hours difference than originally set.
Resolution	This issue has been corrected.
Issue number	AFG-497 / AR63922
Models affected	AFG31XXX
Symptom	When two channels are both in Pulse mode, the pulse width setting of one channel might affect the other channel when an irrelevant pulse parameter is changed.
Resolution	This issue has been corrected.
Issue number	AFG-505
Models affected	AFG31XXX
Symptom	When using Burst mode with an external delay, the Trigger delay value does not affect the displacement of the waveform. This issue was introduced in the v1.5.2 release.
Resolution	This issue has been corrected.
Issue number	AFG-506 / AR63853
Models affected	AFG31XXX
Symptom	Incorrect PM Output formula in the "Modulate a waveform" topic in the User's manual.
Resolution	This issue has been corrected.

Issue number	AFG-508 / AR64101
Models affected	AFG31XXX
Symptom	Two-channel waveforms' phases are not aligned in modulation and sweep modes. The Align Phase button does not function correctly in these modes.
Resolution	This issue has been corrected. The Align Phase button will re-align two-channel waveforms' phases when pressed in continuous, modulation, and sweep modes.
Issue number	AFG-588 / AR64270
Models affected	AFG31XXX
Symptom	The displayed string length update routine was limited to filenames less than 18 characters in length.
Resolution	The filename string length has been increased to 255 characters.
Issue number	AFG-598
Models affected	AFG31XXX
Symptom	The word "Frequency" is not translated into Chinese correctly.
Resolution	This issue has been corrected.
Issue number	AFG-624
Models affected	AFG31XXX
Symptom	SCPI command: SEQuence:ELEM[n]:WAVeform[m] does not default the m parameter to 1 when unspecified.
Resolution	This issue has been corrected.
Issue number	AFG-630
Models affected	AFG31XXX
Symptom	The TRACE:DATA command example shown in the manual is incorrect.
Resolution	This issue has been corrected.
Issue number	AFG-653 / AR64599
Models affected	AFG31XXX
Symptom	Not all settings are recalled when a setup is overwritten.
Resolution	This issue has been corrected.

Known problems

Issue number	AFG-380
Models affected	AFG31XXX
Symptom	The predefined equations in ArbBuilder will not compile with the default settings.
Workaround	Change the range or the number of points for the equation to compile properly.
Issue number	AFG-663
Models affected	AFG31XXX
Symptom	When running the Refresh Relay action using the Utility front panel hard key, the display operations are not locked out, allowing other functions to run.
Workaround	It is recommended that the Refresh Relay action be run using the touch screen menus. If it is run using the Utility front panel hard key, then do not select any other options from the touch screen until the action completes.

Installation instructions

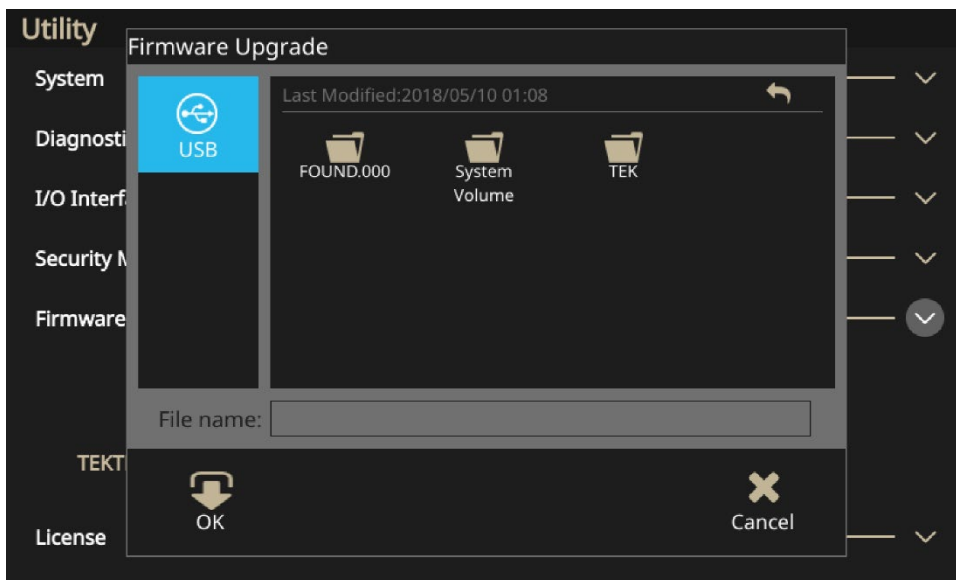
You can use the front-panel USB Type A connector to update your instrument firmware using a USB flash drive. This task is done using the front-panel touchscreen.



CAUTION. Updating your instrument firmware is a sensitive operation; it is critical that you follow the instructions below. If you do not, you may cause damage to your instrument. For example, to prevent damage to the instrument, do not remove the USB flash drive at any time while updating the firmware, and do not power off the instrument during the update process.

To update your instrument firmware:

1. Visit tek.com and search for the Series 31000 firmware.
2. Download the compressed .zip file to your computer.
3. Unzip the downloaded file and copy the .ftb file to the USB flash drive root directory.
4. Insert the USB in the AFG31000 Series instrument front panel.
5. Press the **Utility** button.
6. Select **Firmware > Update**.
7. Select the USB icon.



8. Select the file that you are using to update your instrument.
9. Select **OK**. You will see a message asking to confirm this update.
10. Verify that the instrument powered off and powered on to install the update.
11. Remove the USB drive.

NOTE. When using InstaView, each time a cable is changed, the firmware is upgraded, or the instrument is power-cycled, the cable propagation delay must be auto-measured or manually updated to make sure InstaView works properly.

Appendix A – Previous versions

V1.5.2

New features/enhancements

Issue number	AFG-131 / AR62531
Models affected	AFG31XXX
Enhancement	The AFG31000-RMK Rack Mount Kit is available for AFG31XXX models. Visit tek.com for details.
Issue number	AFG-336
Models affected	AFG31XXX
Enhancement	Updated language translations for the user interface.
Issue number	AFG-373
Models affected	AFG31XXX
Enhancement	Added <code>SYSTEM:REStart</code> SCPI command to reboot the instrument.
Issue number	AFG-430
Models affected	AFG31XXX
Enhancement	Waveform preview images will update immediately after entering new values in Standard waveform view.
Issue number	AFG-442
Models affected	AFG31XXX
Enhancement	Display default brightness is now 100%.

Problem fixes

Issue number	AFG-21 / AR-62242
Models affected	AFG3125X
Symptom	Cannot create DC offset waveform in ArbBuilder for the AFG3125x in Sequence mode
Resolution	This issue has been corrected.
Issue number	AFG-186
Models affected	AFG3125X
Symptom	An application crash can occur when cancelling the Recall Default Setup dialog, after closing the virtual keyboard, and when editing the Point Draw Table of ArbBuilder.
Resolution	This issue has been corrected.
Issue number	AFG-193
Models affected	AFG31XXX
Symptom	Trig out should stay disabled when transitioning to DC waveform.
Resolution	This issue has been corrected.

Issue number	AFG-194
Models affected	AFG31XXX
Symptom	In Burst mode, the graphical green arrow would not display when starting to modify the Interval parameter.
Resolution	This issue has been corrected.
Issue number	AFG-198
Models affected	AFG31XXX
Symptom	On-screen keyboard crashes in some situations.
Resolution	This issue has been corrected.
Issue number	AFG-199
Models affected	AFG31XXX
Symptom	Graph refresh issue when selecting an ARB waveform for Mod Shape using the Modulation function in Basic Mode.
Resolution	This issue has been corrected.
Issue number	AFG-264
Models affected	AFG31XXX
Symptom	You should be prompted with a warning when you try to delete a file that is not empty.
Resolution	This issue has been corrected.
Issue number	AFG-290
Models affected	AFG31XXX
Symptom	Screen capture functionality not working.
Resolution	This issue has been corrected. Press and hold both the left and right keys in either order, then release either key.
Issue number	AFG-291 / AR62720
Models affected	AFG31XXX
Symptom	SCPI license commands not fully implemented.
Resolution	This issue has been corrected. See the <i>AFG31000 Series Arbitrary Function Generator Programmer's Manual</i> , available from tek.com .
Issue number	AFG-300
Models affected	AFG31XXX
Symptom	Dual channel waveform alignment problems under the following conditions: 1. When using the manual trigger in burst mode with a positive slope setting, there is a 40 ns delay between channel 1 and channel 2. 2. When using the manual trigger in burst mode with negative slope setting, there is a one-second delay between channel 1 and channel 2. 3. If booting the unit in burst mode, the channel to channel phase alignment is incorrectly set to 2 ns.
Resolution	These issues have been corrected.

Issue number	AFG-303 / AR62139
Models affected	AFG31XXX
Symptom	When using the Japanese language setting in Basic mode, changing from a Sine waveform to another type may cause the unit to hang.
Resolution	This issue has been corrected.
Issue number	AFG-308 / AR62443
Models affected	AFG31XXX
Symptom	This update fixes an issue setting the generated waveform using the Recall feature in Basic mode. The pulse width was not always set properly, causing unexpected results.
Resolution	This issue has been corrected.
Issue number	AFG-310 / AR62352
Models affected	AFG31XXX
Symptom	The user will not get the expected waveform when they attempt an AM modulation with an Arb file greater than 4,096 points. The max points for AM modulation using an Arb waveform is 4,096 points.
Resolution	This issue has been corrected. The product datasheet has been updated.
Issue number	AFG-316 / AR62581
Models affected	AFG31XXX
Symptom	Undesired glitches could occur in burst mode idle state or when turning the output on and off.
Resolution	This issue has been corrected.
Issue number	AFG-324
Models affected	AFG31XXX
Symptom	Instrument Ethernet connection using DHCP mode is unstable, repeatedly disconnecting and reconnecting, for a long time with certain network configurations.
Resolution	This issue has been corrected.
Issue number	AFG-330
Models affected	AFG31XXX
Symptom	Grammar and typographical errors in the automatic calibration dialog.
Resolution	This issue has been corrected
Issue number	AFG-337
Models affected	AFG31XXX
Symptom	Grammar and typographical errors in the self-diagnostics dialog.
Resolution	This issue has been corrected.
Issue number	AFG-352 / AR62937
Models affected	AFG31XXX
Symptom	In Sequence mode, the idle value of the signal is always the offset of the waveform (or example, 2.5 V of a 0 to 5 Vpp waveform), This will ultimately distort the customer's desired waveform shape.
Resolution	Changed the default sequence mode from idle value to be 0 V if the waveform can reach 0 V. Otherwise the idle value will be the offset.

Issue number	AFG-356
Models affected	AFG31XXX
Symptom	The ArbBuilder equation editor allows equation lines up to 256 characters in length to be entered, but it is limited to 80 characters per line in the compiler.
Resolution	This issue has been corrected. The compiler now supports up to the full 256 characters per line.
Issue number	AFG-374
Models affected	AFG31XXX
Symptom	Keyboard can appear partially off-screen.
Resolution	This issue has been corrected. This fix limits keyboard positioning so that the keyboard is always displayed within the screen boundaries.
Issue number	AFG-376
Models affected	AFG31XXX
Symptom	Advanced Sequence view incorrectly allowed selection of .t _{fw} files
Resolution	This issue has been corrected. .t _{fw} files are not supported in the Advanced sequence view.
Issue number	AFG-391
Models affected	AFG31XXX
Symptom	Advanced Sequence menu sometimes left the New and Save buttons selected.
Resolution	This issue has been corrected.
Issue number	AFG-411
Models affected	AFG31XXX
Symptom	Scrolling the sequence table is too sensitive.
Resolution	This issue has been corrected.
Issue number	AFG-422
Models affected	AFG31XXX
Symptom	Running the Refresh Relay operation is too lengthy.
Resolution	The issue has been corrected. The Refresh Relay operation has been reduced to 250 cycles.
Issue number	AFG-427
Models affected	AFG31XXX
Symptom	The 123 button of the soft alpha-numeric keyboard does not work with some plugins.
Resolution	This issue has been corrected.
Issue number	AFG-437
Models affected	AFG31XXX
Symptom	Selecting × on the small numeric virtual keyboard should issue a cancel request and close the dialog.
Resolution	This issue has been corrected.

Known problems

Issue number	AFG-380
Models affected	AFG31XXX
Symptom	The predefined equations in ArbBuilder will not compile with the default settings.
Workaround	Change the range or the number of points for the equation to compile properly.

V1.4.6

Issue number	1
Models affected	AFG31151, AFG31152, AFG31251, and AFG31252
Enhancement	Support the AFG31151, AFG31152, AFG31251, and AFG31252 models.
Issue number	2
Models affected	AFG31151, AFG31152, AFG31251, and AFG31252
Enhancement	Optimized user interface.