

### Important information

These release notes contain important information about the Double Pulse Application for the AFG31000. For installation instructions and other information regarding the Double Pulse Application, see *Double Pulse Application (0771631xx)*, available from [tek.com](http://tek.com).

### Introduction

This document provides supplemental information regarding the Double Pulse Application. This information is grouped into six categories:

<a href="#">Revision history</a>	Lists the version of software, the document version, and the date of the software release.
<a href="#">New features / enhancements</a>	Summary of each significant new feature included.
<a href="#">Installation instructions</a>	Detailed instructions describing how to install the application.

### Revision history

This document is periodically updated and distributed with releases and service packs to provide the most up-to-date information. This revision history is included below.

Date	Software version	Document number	Version
9/30/2019	V1.0	0771640	00

### New features/enhancements

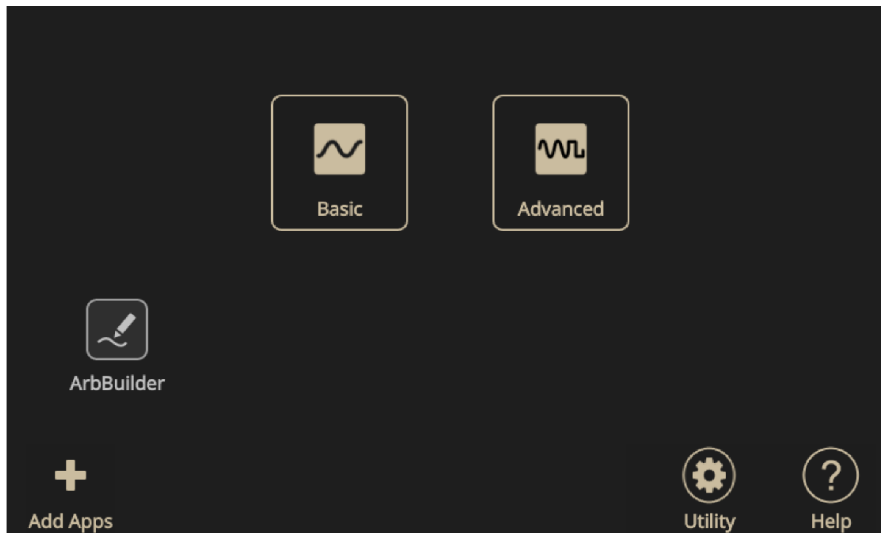
<b>Issue number</b>	AFG-2
<b>Models affected</b>	AFG31XXX
<b>Enhancement</b>	The separately-installable "Double Pulse Application" is available for download from <a href="http://tek.com">tek.com</a> . The application is used to measure switching parameters and evaluate dynamic behaviors of power devices. It allows you to run double pulse tests using a function generator. Refer to <i>AFG31000 Double Pulse Application (0771631xx)</i> , available from <a href="http://tek.com">tek.com</a> , for details.

## Installation instructions

You can install this app or other apps (software applications) from a USB flash drive onto the AFG31000 Series running firmware V1.5.2 or later. Visit [www.tek.com](http://www.tek.com) to search or browse apps available for your AFG31000 Series.

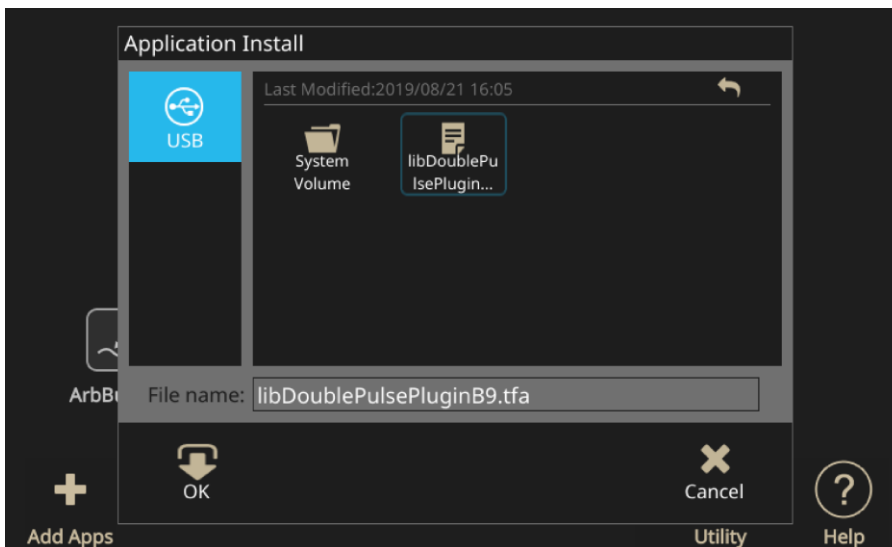
**To install an app:**

1. Download an app from the [www.tek.com](http://www.tek.com) website.
2. Save the app to a USB flash drive.
3. Insert the flash drive into the USB input on the front panel of the AFG31000 Series. The **Add Apps** icon becomes available.



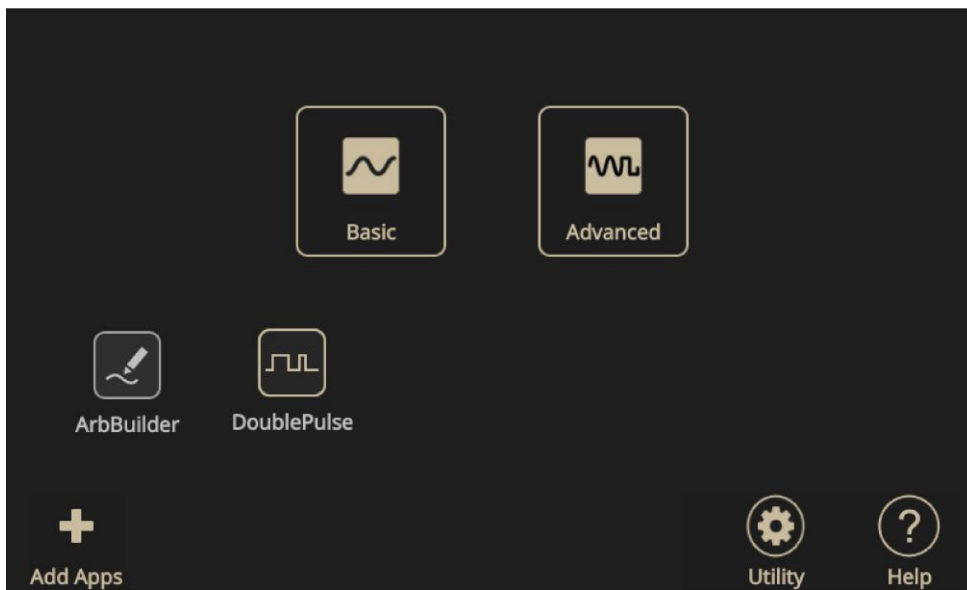
Active Add  
Apps icon

4. Select the **Add Apps** icon.
5. Navigate to your downloaded app and select it. Apps have a \*.tfa file extension.



6. Select **OK** to begin installing the app.

7. Power on and then power off the instrument when prompted.
8. The new app is available on the main screen.



***To remove an app:***

1. Select and hold the app icon for two seconds, then release. You are prompted to confirm the removal.
2. Select **OK** to continue or **Cancel**.
3. Power on and then power off the instrument when prompted.