

28775 Aurora Road
Cleveland, Ohio 44139
1-800-935-5595
<http://www.tek.com/keithley>

OVERVIEW

The Keithley Hall Effect Test Suite (KHETS) allows you to easily perform van der Pauw resistivity and hall voltage measurements. It also includes functionality for making resistivity and hall voltage measurements on bar-type, bridge, and parallel-piped-type specimens. KHETS software can be installed on any computer with a Microsoft® Windows® 7 x 86 (32-bit), Microsoft® Windows® 7 x 64 (64-bit), Microsoft® Windows® 10 x 86 (32-bit), or Microsoft® Windows® 10 x 64 (64-bit) operating system.

SUPPORTED MODELS

The KHETS software can be used with the following Keithley Instruments models.

Equipment	Description	Recommended Keithley model
Model 3706A or external voltmeter	Measures sample voltages and controls the card	
Current source	Supplies sample current	6221 current source
Picoammeter (optional)	Measures sample current	6485 or 6487 picoammeter
Nanovoltmeter (optional)	Measures voltage	2182A nanovoltmeter

KHETS PRE-INSTALLATION

NOTE

It is recommended to back up your system before installing new software.

If you are installing the Keithley Hall Effect Test Suite software on a computer, the following system requirements apply.

Minimum computer configuration:

- Operating System: Microsoft® Windows® 7 (32-bit or 64-bit) or Microsoft® Windows® 10 (32-bit or 64-bit)
- CPU: Pentium® 4, 2.4GHz+ or equivalent
- System Memory (RAM): 1 GB
- Hard Disk: 700 MB free space
- Graphics Card: 16 MB of V_{RAM}
- Screen: 1024 x 768

Recommended computer configuration:

- Operating System: Microsoft® Windows® 7 (32-bit and 64-bit) or Microsoft® Windows® 10 (32-bit and 64-bit)
- CPU: Intel® dual core class or AMD Athlon® class or higher
- System Memory (RAM): 2 GB
- Hard Disk: 1 GB free space
- Graphics Card: 64 MB of V_{RAM}
- Screen: 1920 x 1080

KHETS INSTALLATION

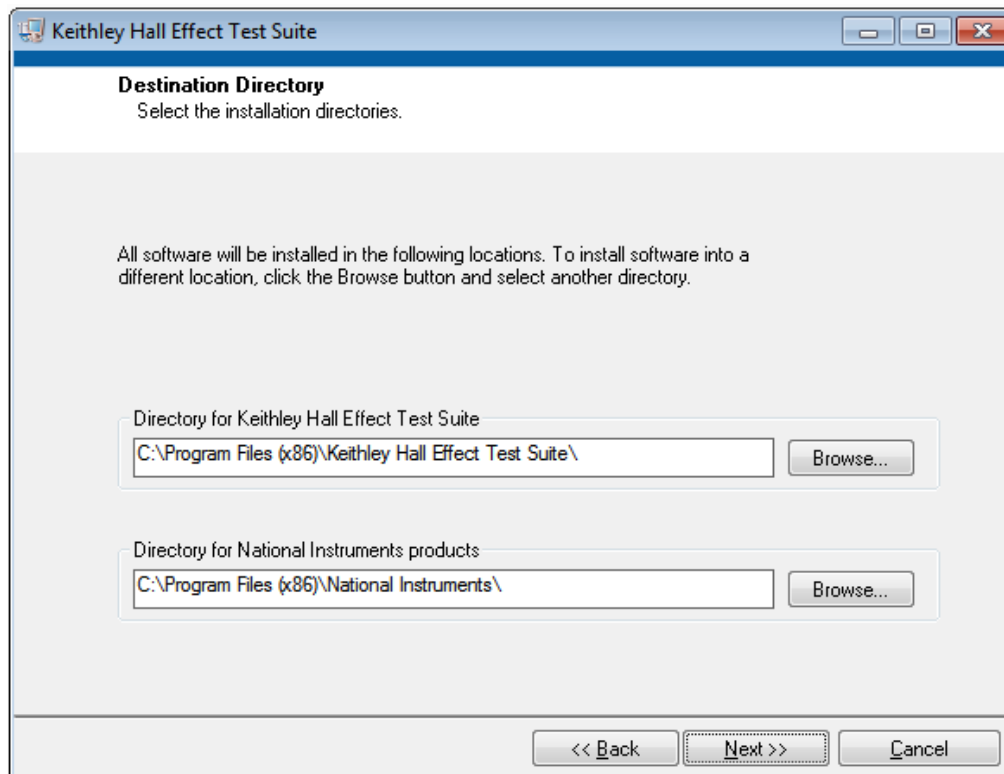
To install the KHETS software:

1. Restart your computer.
2. Log on as a system administrator.
3. On the KHETS software setup path, select **setup.exe** to start the process.

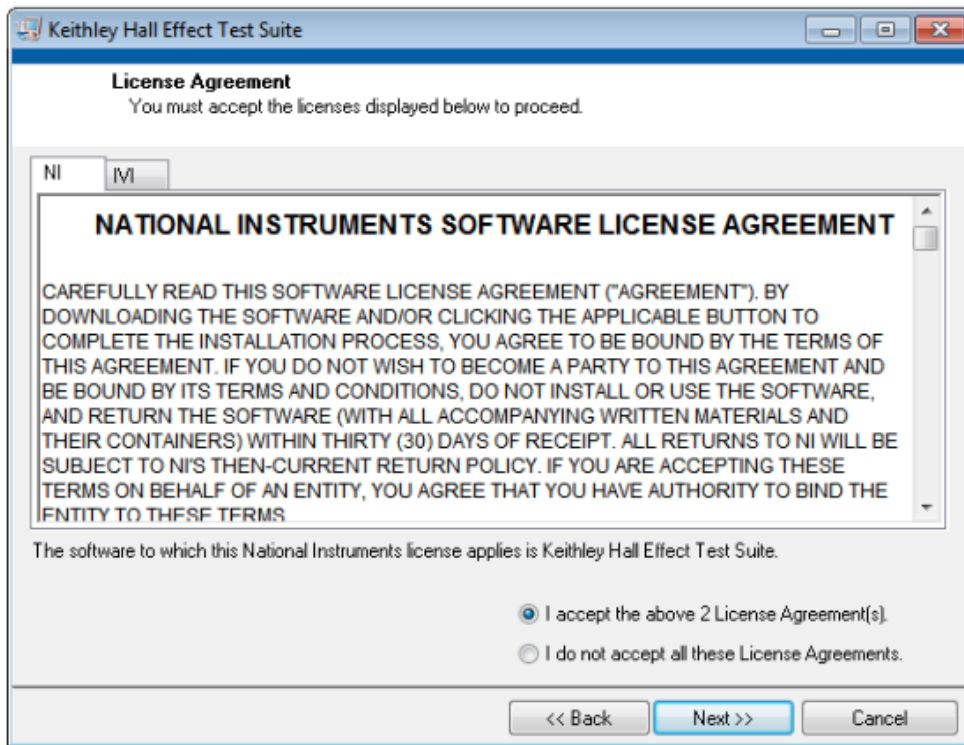
NOTE

During the setup process, you can select **Cancel** to end the installation.

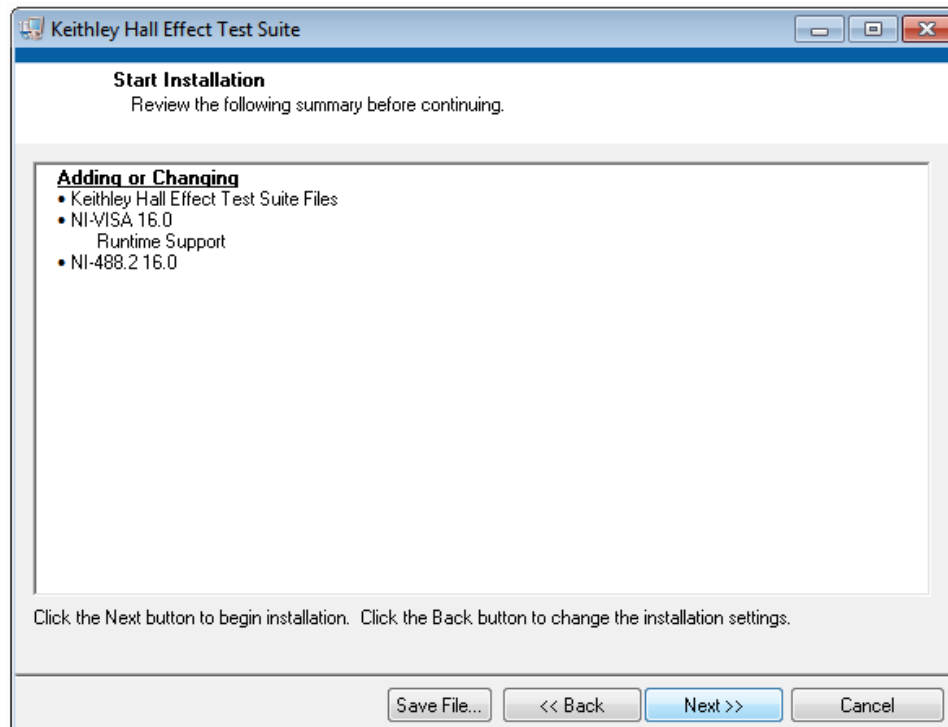
4. In the KHETS Destination Directory dialog box, browse to the location to install the shortcuts.



5. In the License Agreement dialog box, select **I accept the above 2 License Agreement(s)** to agree to the terms.



6. In the Start Installation dialog box, select **Next** to continue.



7. Select **Finish** to end the installation process.